

# Females of Fall

**Red Angus Sale**

Saturday

**November 11, 2023 • 1 p.m.**

**Albany, Wisconsin**

Hosted at Shamrock Nook Red Angus



**DVAuction**  
Broadcasting Real-Time Auctions

# Welcome from...

## ***Shamrock Nook Red Angus***

Brothers Joe and Jim Dunphy are the fifth generation to farm at Shamrock Nook. In 1989, after a dairy barn fire, Jim took an interest in some Red Angus cows that Ray Brickl had at World Beef Expo. Over the last 30 years, the two brothers have traveled the country looking at many of the finest herds from Redland, Leachman, Boot Jack, Andras, Messmer, Forster, Buffalo Creek, Bieber, Ludvigson, Beckton, Brickl, Hidden

Creek, NER farms, and the list goes on. They are thankful for the direction and support of so many great Red Angus breeders. Their search for established maternal cows led them to Eleanor, Tidy Bee, Copper Queen, Stony, Erica, and Mimi females to lead the way. They feel fortunate to have partnered with Hornung Red Angus, Johnson Family Cattle, and Welsh Prairie Red Angus for this sale to offer you some of the best females in the Midwest.



Jim Dunphy Family



Joe Dunphy Family

## ***Hornung Red Angus***

In 2002 Andy bought his first Red Angus heifer, SRN Copper Queen M308. Two things happened that day, the beginning of Hornung Red Angus and a lifelong friendship with Shamrock Nook Red Angus. Hornung Red Angus has grown since 2002, Andy has been joined by wife, Alisa, and their daughter, Addyson. SRN Copper Queen M308 became the foundation of Hornung Red Angus. We strive to produce Red Angus cattle that will fit into any program.



Andy & Alisa Hornung Family

## ***Johnson Family Cattle***

Johnson Family Cattle, located in Shawano, Wis., is owned/operated by Brad & Lindsay Johnson along with children Isaac and Charlotte. The JFCC program is designed to produce functional, performance cattle that are the cattlemen's kind. Having both been in the beef industry all their lives, the Johnsons started in the Red Angus breed in 2006. They continue to develop their herd with an aggressive A.I. and E.T. program, strict culling and an unwavering pursuit of the ideal beef animal.



Brad & Lindsay Johnson Family

## ***Welsh Prairie Red Angus***

Welsh Prairie Red Angus started breeding Red Angus cattle 25 years ago when Jeff and Gail got married. With busy work schedules, their cattle are basically run like commercial cattle - grazing on stock-piled grass and corn stalks as long as the snow allows. Cattle need to be trouble-free; they don't have time to be messing with feet, udders or mothering issues. Welsh Prairie has found that Red Angus cattle meet that need.



Welsh Prairie Red Angus  
Schneider Family

# Females of Fall

## Red Angus Sale

Saturday, November 11, 2023 • Sale Time: 1 p.m.

Sale Location: Shamrock Nook Red Angus, Albany, Wisconsin

### Sale Location

Shamrock Nook Sale Facility  
W401 Hwy 59 • Albany, WI 53502

### Cattle will be available for viewing

Friday, November 10... All Day  
Join us for dinner and reception at 5 p.m.  
Saturday, November 11... 9 a.m. until time of sale  
Complimentary lunch served at Noon

### Sale Day Phones

Joe Dunphy .....608-558-5342  
Jim Dunphy .....608-897-6513  
Andy Hornung.....608-513-7610  
Brad Johnson .....715-498-9328  
Jeff Schneider .....608-516-7005

### Auctioneer

Cody Lowderman .....309-313-2171

### Sale Day Representatives

Jared Ruter, Midwest Marketer .....815-238-7530  
Casey Jentz, Special Assignment .....608-234-1998  
Greg Miller .....608-778-8785  
Mike Theobald .....608-712-9247

### Sale Catalog By

Jane Adolph • Mt. Carroll, IL .....815-244-5456

### Delivery/Trucking:

Trucking will be the buyer's responsibility, but we will be glad to assist with delivery plans.

### Clerk's Note

This group of breeders came together five years ago to offer an elite set of Red Angus females. This sale is coordinated under the name Rock Solid Reds. On sale day, please make payment to: Rock Solid Reds.

### Sale Day Veterinarian

David Chapman, DVM

### Liabilities

All persons who attend the sale do so at their own risk. The sellers assume no liability for any accidents that may occur or for any illnesses that may be contracted.

### Accommodations

AmericInn, Monroe, WI .....608-352-6406  
Boarders Inn & Suites, Evansville, WI.....608-882-0936

### Terms & Conditions:

Cattle will sell under the suggested Terms and Conditions of the Red Angus Association of America.

*This sale will be broadcast live on DVAuction*

**DVAuction**

**Broadcasting Real-Time Auctions**

**Visit [www.DVAuction.com](http://www.DVAuction.com)  
and Register Today!**

For General Questions Please Contact Our Office:  
(402) 316-5460 or [support@dvauction.com](mailto:support@dvauction.com)



**Lot 1** SRN SUZY 2317

Leading off the 5th Annual Females of Fall Sale is a Susie heifer backed by some of the breed's finest foundation stock. This female combines the Cassidy, Hi Dee, Susie cow families of Shamrock Nook fame, as well as the Marita and Tilly lines. She's got a solid set of EPDs with no holes and looks the part. If you like Red Angus history, or just appreciate high quality cattle like this young female, be sure to be in Albany on November 11th.



BIEBER SUSIE 254A Grand Dam of Lot 1

**Lot 1**

From the herd of: Shamrock Nook Red Angus

**SRN SUZY 2317**

Open Heifer	Reg. #	Calved	Tattoo	Cat	% Breed	BW	WW
	4741487	01-07-2023	2317 1JD	A	100% AR	64	551

BIEBER SPARTACUS A193  
**SRN SPARTACUS 1915**  
 SRN CASSIDY 1617

BIEBER LB MITIGATOR C314  
**BIEBER SUSIE 566F**  
 BIEBER SUSIE 254A

BIEBER ROUSE SAMURAI X22  
 BIEBER TILLY 233U  
 BIEBER ROOSEVELT W384  
 SRN CASSIDY 7881

BIEBER ROLLIN DEEP Y118  
 BIEBER TILLY 143Y  
 BIEBER ROUSE SAMURAI X22  
 BIEBER SUSIE 217W

**Lot 2**

From the herd of: Shamrock Nook Red Angus

**SRN PALOMA 2332**

Open Heifer	Reg. #	Calved	Tattoo	Cat	% Breed	BW	WW
	4741517	01-18-2023	2332 1JD	A	100% AR	86	636

BIEBER SPARTACUS A193  
**SRN SPARTACUS 1915**  
 SRN CASSIDY 1617

H2R PROFITBUILDER B403  
**EEC PALOMA E06**  
 EEC ROSIE C45

BIEBER ROUSE SAMURAI X22  
 BIEBER TILLY 233U  
 BIEBER ROOSEVELT W384  
 SRN CASSIDY 7881

LSF TAKEOVER 9943W  
 BROWN MS P707 Y6674  
 BIEBER ROOSEVELT W384  
 BIEBER TOP LINE 252U

ProS	HB	GM	CED	BW	WW	YW	MILK	ME	HPG	CEM	STAY	MARB	CW	REA	FAT
97	67	29	16	-4	59	95	25	4	14	10	16	0.41	25	0.14	0.04
43%	26%	67%	14%	14%	55%	55%	58%	52%	16%	5%	49%	50%	41%	46%	86%

ProS	HB	GM	CED	BW	WW	YW	MILK	ME	HPG	CEM	STAY	MARB	CW	REA	FAT
110	59	52	9	1.1	80	128	24	11	13	6	17	0.56	44	0.15	0.05
23%	42%	22%	91%	93%	3%	4%	69%	89%	24%	80%	34%	20%	3%	45%	96%



**Lot 2** SRN PALOMA 2332

Another generation of Paloma, 2332 is out of the first Paloma we bought from Emerald Earth Cattle, her MPPA is 103. She's a brood cow that knows how to grow 'em. 2332's sire, SRN Spartacus 1915, has 8 EPDs in the top third or higher – ProS, GM, WW, YW, HPG, STAY, Marb, and CW. A maternal sister in our 2021 sale went to Iowa.



SRN PALOMA 2082 Maternal Sister to Lot 2

## Lot 3 JFCC TARMILY 356

Show heifer quality look, donor cow quality genetics! Elite marbling genetics never looked so good. Find a young person that wants to show a fancy heifer, then make her an awesome addition to your herd. Few females can combine genetic merit and good looks like this Stockmarket heifer does. Charlotte says this heifer is the kind to buy. How's that for an endorsement? Halter broke.



JFCC TARMILY 948 Maternal Sister of Lot 3



Lot **3**

From the herd of: Johnson Family Cattle

## JFCC TARMILY 356

Open Heifer	Reg. #	Calved	Tattoo	Cat	% Breed	BW	WW
	4707139	12-20-2022	356 JFCC	A	100% AR	60	512

PIE STOCKMAN 4051  
**BIEBER CL STOCKMARKET E119**  
BIEBER CL ADELLE 475C

LSF SAGA 1040Y  
PIE LAKOTA 046  
ANDRAS FUSION R236  
BIEBER ADELLE 297Y

WEBR DOC HOLLIDAY 2N  
**JFCC TARMILY 953**  
DFRA TARMILY N512

MLK CRK CUB 722  
WEBR MS DOLLY 1L  
BIEBER MAKE MIMI 7249  
DFRA TARMILY N305



ProS	HB	GM	CED	BW	WW	YW	MILK	ME	HPG	CEM	STAY	MARB	CW	REA	FAT
92	50	42	18	-4.9	56	94	23	7	9	13	14	0.86	-1	0.11	0.05
51%	60%	40%	3%	7%	66%	57%	71%	71%	92%	1%	66%	2%	99%	53%	96%

Lot **4**

From the herd of: Johnson Family Cattle

## JFCC CASSIDY 359

Open Heifer	Reg. #	Calved	Tattoo	Cat	% Breed	BW	WW
	4707145	12-23-2022	359 JFCC	A	100% AR	65	505

PIE STOCKMAN 4051  
**BIEBER CL STOCKMARKET E119**  
BIEBER CL ADELLE 475C

LSF SAGA 1040Y  
PIE LAKOTA 046  
ANDRAS FUSION R236  
BIEBER ADELLE 297Y

3SCC DOMAIN A163  
**SRN CASSIDY 2018**  
SRN CASSIDY 1617

BECKTON DOMINOR T122 Z1  
3SCC EUCLA X723  
BIEBER ROOSEVELT W384  
SRN CASSIDY 7881



ProS	HB	GM	CED	BW	WW	YW	MILK	ME	HPG	CEM	STAY	MARB	CW	REA	FAT
91	43	48	15	-5.3	63	101	24	7	10	9	14	0.84	19	0.22	0.08
52%	74%	27%	16%	5%	39%	42%	61%	70%	78%	18%	71%	2%	65%	30%	99%

## Lot 4 JFCC CASSIDY 359

This heifer puts a lot together – depth of body, sound structure, eye catching profile and excellent EPDs! It should come as no surprise that her dam was a highlight bred heifer in the 2021 Females of Fall with many of the same attributes. When Isaac bought this heifer's dam, we knew we had bought an outstanding heifer, but we didn't realize the inherent productivity the Cassidy cow family offers. They just flat get the job done. Halter broke.



SRN CASSIDY 2018 Dam of Lot 4





## Lot 5

**AAHR GRAND LAKOTA 302L**  
This open heifer has a bright future ahead of her. She has the look of cow power. She is deep, soggy, long bodied with plenty of shape. Let's not forget to look at her attractive EPDs. This heifer is the whole package. She is a hard one to part with, but we feel she would be a great addition to any herd. She is halter broke.



LSF SRR GRAND MASTER 0039H Sire of Lot 5

## Lot 5

From the herd of: Hornung Red Angus

### AAHR GRAND LAKOTA 302L

Open Heifer	Reg. #	Calved	Tattoo	Cat	% Breed	BW	WW
	4774267	01-02-2023	302L AAHR	A	100% AR	62	705

CRUMP MAGNITUDE 5507  
**LSF SRR GRAND MASTER 0039H**  
LSF SRR MINOLA D6412 F8198

BROWN PREMIER X7876  
CRUMP TABITHA 3140  
LSF SRR COMMANDER 5906C  
LSF SRR MINOLA X0427 D6412

GMRA TESLA 6214  
**AAHR TESS LAKOTA 112J**  
AAHR REDEEMING LAKOTA 910G

GMRA TRILOGY 0226  
GMRA ANGIE ROSE 448  
BROWN JYJ REDEMPTION Y1334  
GMRA LAKOTA 247



ProS	HB	GM	CED	BW	WW	YW	MILK	ME	HPG	CEM	STAY	MARB	CW	REA	FAT
111	51	61	17	-6.4	64	106	31	10	11	12	14	0.51	37	0.3	0
21%	59%	11%	5%	2%	38%	32%	8%	88%	60%	1%	68%	28%	8%	17%	22%

## Lot 6

From the herd of: Hornung Red Angus

### AAHR ABIGRACE 312L

Open Heifer	Reg. #	Calved	Tattoo	Cat	% Breed	BW	WW
	4774287	01-08-2023	312L AAHR	A	100% AR	67	678

SPUR FRANCHISE OF GARTON  
**9 MILE FRANCHISE 6305**  
C-BAR ABIGRACE Y11

SPUR FRANCHISE 7070  
H & H IRENE LASS 0135  
TR COLT 45 UT806  
C-BAR & BROWN ABIGRACE T712

PIE ONE OF A KIND 352  
**AAHR ABIGRACE KIND 023H**  
DAMAR R544 ABIGRACE 4405P B0

BUF CRK THE RIGHT KIND U199  
PIE FAYETTE 1160  
HXC CONQUEST 4405P  
BROWN C- A502M ABIGRACE R544



ProS	HB	GM	CED	BW	WW	YW	MILK	ME	HPG	CEM	STAY	MARB	CW	REA	FAT
126	64	63	15	-3	70	119	33	7	12	11	15	0.55	39	0.47	0.03
8%	32%	9%	16%	28%	18%	11%	3%	72%	35%	1%	63%	22%	7%	5%	70%



## Lot 6

**AAHR ABIGRACE 312L**  
Here is a dark, cherry red heifer out of the Damar R544 Abigrace 4405P cow family. We purchased the Abigrace cow in the Damar Dispersal in 2017; since then, she has proven to be a mainstay in our herd. This young heifer will not disappoint you either. She is phenotypically correct with a nice set of EPDs to back her up. She is halter broke.



AAHR ABIGRACE STOCK 200K Maternal Sister to Lot 6

## Lot 7 SRN AA ELSA 2342

This open heifer is stacked with great foundation lines - Finished Product, Hoover Dam, Andras Amy, Redemption, Draft Pick, Abigrace, Rollin Deep, Mission Statement, Mulberry, and Copper Queen - all in one package. With that kind of genetic value and top ranking EPDs, she will be a sound investment. Put a star by this one.



COLLIER FINISHED PRODUCT Sire of Lot 7



Lot **7** From the herd of: Shamrock Nook Red Angus

## SRN AA ELSA 2342

Open Heifer	Reg. #	Calved	Tattoo	Cat	% Breed	BW	WW
	4765135	01-24-2023	2342 1JD	A	100% AR	63	612

COLLIER FINAL PRODUCT B389  
**COLLIER FINISHED PRODUCT**  
COLLIER AMY B385

CONNEALY FINAL PRODUCT  
ANDRAS AMY B121  
HOOVER DAM  
ANDRAS AMY B121

OVER DRAFT PICK 413D  
**SRN ELSA 2003**  
AAHR DEEP COPPER 820F

C-T RED QUEST 4010  
OVER BLUSH 413B  
BIEBER DEEP END B597  
AAHR COPPER QUEEN 186Z

ProS	HB	GM	CED	BW	WW	YW	MILK	ME	HPG	CEM	STAY	MARB	CW	REA	FAT
122	67	54	15	-3.6	64	105	20	6	15	10	15	0.58	34	0.13	0.03
11%	25%	19%	21%	19%	38%	32%	90%	69%	5%	4%	59%	18%	14%	49%	76%

Lot **8** From the herd of: Shamrock Nook Red Angus

## SRN SHANNON 2329

Open Heifer	Reg. #	Calved	Tattoo	Cat	% Breed	BW	WW
	4741511	01-17-2023	2329 1JD	A	100% AR	72	567

BIEBER SPARTACUS A193  
**SRN SPARTACUS 1915**  
SRN CASSIDY 1617

BIEBER ROUSE SAMURAI X22  
BIEBER TILLY 233U  
BIEBER ROOSEVELT W384  
SRN CASSIDY 7881

BIEBER ROLLIN DEEP Y118  
**SRN SHANNON 1755**  
BIEBER SUSIE 217W

BIEBER ROOSEVELT W384  
BIEBER TILLY 399W  
BIEBER WECOTA 10786  
BIEBER SUSIE 8784

ProS	HB	GM	CED	BW	WW	YW	MILK	ME	HPG	CEM	STAY	MARB	CW	REA	FAT
115	89	26	14	-3	58	87	25	0	14	9	18	0.41	25	0.16	0.06
17%	4%	74%	27%	28%	62%	70%	52%	31%	12%	13%	13%	50%	42%	42%	99%

## Lot 8

### SRN SHANNON 2329

Some cows always look great in pictures. Then there are those that just want to look the other way. This heifer wasn't feeling photogenic on picture day, but check her out on sale day. She's worth looking up because she's actually the top HerdBuilder (HB) index in the entire sale! She's got some great genetics behind her - Spartacus, High Noon, Rollin Deep, Susie and Cassidy. Take her home and let her work hard for you. She doesn't want to be on your Christmas card anyway.



SRN SHANNON 1934 Maternal Sister to Lot 8





## Lot 9 DKLC 238

I bet you will find this one in the pen. This gal is stout and good! She's a growthy female with bone and power, but still maintains a feminine and broody design. On top of that, she's more than just a pretty face – she also has 9 EPD traits in the top 15% of the breed and goes back to the great Patricia Rose cow family. Halter broke and ready to show. Co-owned with Diamond K Livestock, Brandon & Michelle Knutson.



JFCC PATRICIA ROSE 168 Dam of Lot 9

## Lot 9

From the herd of: Johnson Family Cattle

### DKLC 238

Open Heifer	Reg. #	Calved	Tattoo	Cat	% Breed	BW	WW
	4802274	02-03-2023	238 DKLC	A	100% AR	70	678

PIE STOCKMAN 4051  
**BIEBER CL STOCKMARKET E119**  
 BIEBER CL ADELLE 475C

LSF SAGA 1040Y  
 PIE LAKOTA 046  
 ANDRAS FUSION R236  
 BIEBER ADELLE 297Y

KCC EXCELLENCE 139-774  
**JFCC PATRICIA ROSE 168**  
 JFCC BLW PATRICIA ROSE 857

LJC MERLIN 937Z  
 139 1KCC  
 HXC DECLARATION 5504C  
 HXC PATRICIA ROSE 102Y

## Lot 10

From the herd of: Welsh Prairie Red Angus

### PICK OF THE HERD

Jeff and Gail Schneider started breeding Red Angus cattle over 25 years ago. In the 2020 sale, their open heifer, WPRA Eleanor H003, was the top seller at \$10,000. They are offering PICK of this year's heifer crop.

There are 20 heifers to choose from, most of them are February and March calves. Watch for pictures and registration numbers to be posted on the Welsh Prairie Red Angus Facebook page. To view the offering, located in Rio, WI, call/text Jeff at 608.516.7005 or WelshPrairieRA@centurytel.net.

ProS	HB	GM	CED	BW	WW	YW	MILK	ME	HPG	CEM	STAY	MARB	CW	REA	FAT
99	25	74	16	-4.6	72	123	25	8	8	10	11	0.87	27	0.33	0.03
40%	94%	3%	10%	9%	13%	7%	56%	79%	94%	6%	92%	2%	33%	14%	79%



## Lot 10

PICK OF THE HERD FROM WELSH PRAIRIE RED ANGUS

This group comes out of sires like Duff Red Blood, Duff Redwood 1941, LWNBRG Crossover, MLRA Respect 42G, Pie Captain 057, Rainbow Heads or Tails 24J, WPRA Ground Pounder H060, and WPRA Carl 1104.

## Lot 11 SRN SUSIE 2261

This girl's pedigree includes PIE Quarterback 789 and Bieber Rollin Deep Y118 and is anchored by the great Susie cow family. She owns the #4 Milk EPD in the sale. 2261 is the kind that will bring back those stout, heavy calves. Go ahead, make your neighbors jealous. Save a spot for this one in the front pasture by the road. It'll be fun to watch them drive by real slow.

**Exposed to EEC Payweight 35G 24K (#4612745) 5/20/2023-7/24/2023, then SRN Duke 2103 (#4444755) 8/1/2023-9/30/2023. Ultrasound confirmed due late April.**



PIE QUARTERBACK 789 Grand Sire of Lot 11



*Chance*

## Lot 11

From the herd of: Shamrock Nook Red Angus

### SRN SUSIE 2261

Bred Heifer	Reg. #	Calved	Tattoo	Cat	% Breed	BW	WW
	4628953	02-11-2022	2261 1JD	A	100% AR	71	594

PIE QUARTERBACK 789  
**9 MILE QUARTERBACK 0002**  
6R CAMEO 723E

PIE STOCKMAN 4051  
PIE RUBY 520  
6R 420B  
6R CAMEO 323A

SRN ALISTAR 1635  
**SRN SUSIE 2021**  
BIEBER SUSIE 217W

BIEBER ROLLIN DEEP Y118  
MESSMER LINDA T112  
BIEBER WECOTA 10786  
BIEBER SUSIE 8784

ProS	HB	GM	CED	BW	WW	YW	MILK	ME	HPG	CEM	STAY	MARB	CW	REA	FAT
106	73	33	11	-1.1	66	105	31	4	12	7	18	0.44	17	0.24	0.01
29%	17%	60%	68%	64%	28%	32%	10%	55%	37%	55%	17%	42%	74%	26%	41%

## Lot 12

From the herd of: Shamrock Nook Red Angus

### SRN ELEANOR 2232

Bred Heifer	Reg. #	Calved	Tattoo	Cat	% Breed	BW	WW
	4628897	01-20-2022	2232 1JD	A	100% AR	69	569

SPUR FRANCHISE OF GARTON  
**9 MILE FRANCHISE 6305**  
C-BAR ABIGRACE Y11

SPUR FRANCHISE 7070  
H & H IRENE LASS 0135  
TR COLT 45 UT806  
C-BAR & BROWN ABIGRACE T712

5L DEFENDER 560-30Z  
**SRN ELEANOR 1944**  
SRN ELEANOR 1725

5L ADVOCATE 817-14W  
5L BLACK ADINA 525-560  
BECKTON EPIC U368 KM  
SRN ELEANOR 7901

ProS	HB	GM	CED	BW	WW	YW	MILK	ME	HPG	CEM	STAY	MARB	CW	REA	FAT
101	42	58	15	-4	53	94	31	0	8	10	13	0.58	26	0.32	0.02
36%	75%	13%	16%	14%	75%	57%	9%	33%	94%	6%	80%	18%	40%	15%	47%

## Lot 12

### SRN ELEANOR 2232

Got milk? This heifer does. She sports the #2 Milk EPD in sale, which tells me she's got the chops to bring in big stout money-making calves. Don't miss this dark red, smooth made Franchise daughter with a nice build. Bonus: She sells AI bred to Blue Chip! Her first calf should generate a quick return on investment!

**AI Bred 5/5/2023 to Bieber Blue Chip H302 (#4303789). Due 2/11/2024.**



9 MILE FRANCHISE 6305 Sire of Lot 12



*Chance*



## Lot 13

**AAHR FULL ON CASSIDY 213K**  
 Look at this massive, bold-bodied, attractive daughter of PIE Fullback 7005. This female is cowy, with a solid foot and correct build. She is bred to Berwald Completely 2056. Completely combines two of the breed's top sires, Complete and Quarterback, plus is backed by the famous Stony cow family. Her balance of dimension, look and build, along with her EPDs are among the elite in this sale offering.  
**AI bred 5/9/23 to Berwald Completely 2056 (#4687921). Due 2/14/24.**



BERWALD COMPLETELY 2056 Service Sire of Lot 13

## Lot 13

From the herd of: Hornung Red Angus

### AAHR FULL ON CASSIDY 213K

Bred Heifer	Reg. #	Calved	Tattoo	Cat	% Breed	BW	WW
	4622095	02-04-2022	213K AAHR	A	100% AR	73	741

PIE CINCH 4126  
**PIE FULLBACK 7005**  
 PIE MS PATRIOT 536

LSF SAGA 1040Y  
 TKP BONNE BEL 110  
 PIE CODE RED 9058  
 PIE MS PATRIOT 3019

BIEBER SPARTACUS A193  
**AAHR CASSIDY 707E**  
 HORNUNG CASSIDY 100R

BIEBER ROUSE SAMURAI X22  
 BIEBER TILLY 233U  
 BIEBER MAKE MIMI 7249  
 SRN CASSIDY 3011



ProS	HB	GM	CED	BW	WW	YW	MILK	ME	HPG	CEM	STAY	MARB	CW	REA	FAT
78	57	21	14	-1.9	72	122	30	3	10	7	16	0.1	29	0.07	0.03
73%	47%	81%	37%	49%	13%	8%	12%	47%	81%	48%	48%	99%	28%	63%	70%

## Lot 14

From the herd of: Hornung Red Angus

### AAHR RACE CASSIDY 207K

Bred Heifer	Reg. #	Calved	Tattoo	Cat	% Breed	BW	WW
	4622085	01-17-2022	207K AAHR	A	100% AR	68	765

DKF ELIMINATOR 15A  
**RED DKF RAZOR 55C**  
 DKF MISS NET WORTH 21A

S A V ELIMINATOR 9105  
 RED DKF MISS POWER 17P  
 S A V NET WORTH 4200  
 DKF MISS POWER UP 95X

OVER DRAFT PICK 413D  
**AAHR PICK CASSIDY 901G**  
 AAHR CASSIDY 707E

C-T RED QUEST 4010  
 OVER BLUSH 413B  
 BIEBER SPARTACUS A193  
 HORNUNG CASSIDY 100R



ProS	HB	GM	CED	BW	WW	YW	MILK	ME	HPG	CEM	STAY	MARB	CW	REA	FAT
53	12	40	11	-1.3	67	111	29	10	11	6	10	0.49	39	-0.33	0.05
96%	99%	43%	72%	61%	25%	21%	19%	87%	64%	74%	94%	33%	7%	99%	95%



## Lot 14

**AAHR RACE CASSIDY 207K**  
 An extremely well-balanced feminine female that I have no doubt will follow in the Cassidy footsteps. The Cassidy cow family has been a cornerstone in the Hornung Red Angus herd. She is bred to Six Mile Mossy Oak 175H who is a John Wick son. The blending of these two pedigrees will offer something unique. This female is going to prove to be a phenomenal addition to anyone's herd.  
**AI bred 3/16/23 to Six Mile Mossy Oak 175H (#4547373). Due 12/22/23.**



RED SIX MILE MOSSY OAK 175H A.I. Service Sire to Lot 14



HXC PATRICIA ROSE 102Y  
Grand Dam of Lot 15 & 16



JFCC PATRICIA ROSE 1063  
Full Sister to Lot 15 & 16



**Lot 15**

JFCC PATRICIA ROSE 247  
AI bred 3/1/23 to C-BAR Collateral 203J  
(#4534315). Due 12/9/23.

*Chance*

Lot **15**

*From the herd of:* Johnson Family Cattle

**JFCC PATRICIA ROSE 247**

Bred Heifer	Reg. #	Calved	Tattoo	Cat	% Breed	BW	WW
	4617179	01-03-2022	247 JFCC	A	100% AR	72	630

BECKTON DOMINOR T122 Z1  
**3SCC DOMAIN A163**  
3SCC EUCLA X723

BECKTON DOMINOR Z1 R610  
BKT LARKABEL R038 WA  
BASIN HOB0 0545  
BSKF EUCLA U278

HXC DECLARATION 5504C  
**JFCC BLW PATRICIA ROSE 882**  
HXC PATRICIA ROSE 102Y

LEACHMAN PLEDGE A282Z  
HXC190Y  
BECKTON NEBULA P P707  
HXC 502R



ProS	HB	GM	CED	BW	WW	YW	MILK	ME	HPG	CEM	STAY	MARB	CW	REA	FAT
127	60	67	14	-0.2	71	121	25	8	15	5	17	0.54	46	0.12	0.04
8%	39%	6%	27%	80%	16%	9%	60%	78%	4%	84%	33%	23%	2%	51%	86%

Lot **16**

*From the herd of:* Johnson Family Cattle

**JFCC PATRICIA ROSE 251**

Bred Heifer	Reg. #	Calved	Tattoo	Cat	% Breed	BW	WW
	4599709	01-05-2022	251 JFCC	A	100% AR	70	602

BECKTON DOMINOR T122 Z1  
**3SCC DOMAIN A163**  
3SCC EUCLA X723

BECKTON DOMINOR Z1 R610  
BKT LARKABEL R038 WA  
BASIN HOB0 0545  
BSKF EUCLA U278

HXC DECLARATION 5504C  
**JFCC BLW PATRICIA ROSE 882**  
HXC PATRICIA ROSE 102Y

LEACHMAN PLEDGE A282Z  
HXC190Y  
BECKTON NEBULA P P707  
HXC 502R



ProS	HB	GM	CED	BW	WW	YW	MILK	ME	HPG	CEM	STAY	MARB	CW	REA	FAT
104	41	63	15	-3.8	61	110	25	8	15	5	14	0.7	28	0.02	0.07
31%	77%	9%	24%	17%	48%	23%	60%	76%	4%	83%	70%	7%	29%	74%	99%

Selling this pair of heifers stings a little because they both should be in our replacement pen. Pedigree excellence, powerful phenotype and superb EPDs...and both are bred AI for early calves! Study the lesson here, the homework is all done. These two babes are anchored by the genetics of the great HXC Patricia Rose 102Y, best known as the dam of Legend and Intrepid. Full sibs in past Females of Fall sales have commanded top dollar, including the \$10,000 high seller of 2021. These donor prospects have the ancestry to be straight up money makers, bid with confidence.



**Lot 16**

JFCC PATRICIA ROSE 251  
AI bred 4/13/23 to 5L 9 Mile Resonate 1113  
(#4558479). Due 1/20/24.

*Chance*



## Lot 17 SRN PALOMA 2237

A Draft Pick daughter whose dam boasts an MPPA of 108, one of the highest in our herd. Our Palomas are good sized cows that raise big calves while maintaining great body condition. 2237 has a nice tight udder and is expected to have a heifer calf. She's bred to Bieber Blue Chip who's known for calving ease, excellent feet, excelling in marbling and ribeye. This could be a match made in heaven!  
**AI Bred 5/5/2023 to Bieber Blue Chip H302 (#4303789). Due 2/11/2024.**



BIEBER BLUE CHIP H302  
 A.I. Service Sire to Lot 17

## Lot 17

From the herd of: Shamrock Nook Red Angus

### SRN PALOMA 2237

Bred Heifer	Reg. #	Calved	Tattoo	Cat	% Breed	BW	WW
	4628907	01-27-2022	2237 1JD	A	100% AR	84	653

C-T RED QUEST 4010  
**OVER DRAFT PICK 413D**  
 OVER BLUSH 413B

BROWN JYJ REDEMPTION Y1334  
 C-T BLOCKANA 2023  
 SLGN YARDMASTER 125Y  
 C-BAR ABIGRACE X13

5L BOURNE 117-48A  
**SRN PALOMA 1968**  
 EEC PALOMA E06

5L ADVANTAGE 3267-221Y  
 5L ROXIE 854-117  
 H2R PROFITBUILDER B403  
 EEC ROSIE C45

ProS	HB	GM	CED	BW	WW	YW	MILK	ME	HPG	CEM	STAY	MARB	CW	REA	FAT
111	48	63	10	0.7	84	136	29	15	16	7	13	0.67	48	0.17	0.03
22%	64%	10%	82%	90%	1%	2%	22%	97%	3%	55%	75%	9%	1%	40%	81%

## Lot 18

From the herd of: Shamrock Nook Red Angus

### SRN CASSIDY 2240

Bred Heifer	Reg. #	Calved	Tattoo	Cat	% Breed	BW	WW
	4628913	01-28-2022	2240 1JD	A	100% AR	81	539

ANDRAS BANDO B120  
**ANDRAS MR BLACK JEANS R179**  
 ANDRAS AMY B121

H S A F BANDO 1961  
 MYTTY IN FOCUS  
 ANDRAS AMY 354

SRN HEMAN 1447  
**SRN MS CASSIDY 1767**  
 SRN CASSIDY 1422

3SCC HEMAN Z82  
 SRN RACHILLE Y116  
 3SCC HEMAN Z82  
 SRN KING DAN Y159

ProS	HB	GM	CED	BW	WW	YW	MILK	ME	HPG	CEM	STAY	MARB	CW	REA	FAT
99	58	41	12	-1.1	52	86	25	2	11	4	18	0.58	11	-0.06	0.02
39%	43%	42%	66%	64%	79%	73%	54%	42%	63%	92%	15%	18%	88%	87%	56%



## Lot 18

### SRN CASSIDY 2240

This quiet, gentle, sweet girl is one of Joe's favorites. Her sire, Andras Mr. Black Jeans, produces daughters who have great udder conformation and excellent feet, legs and fertility. She's an easy keeper. Need to up your Marbling? 2240 can help with that. According to the ultrasound preg check, the sire is SRN Draft Pick 2213, who also has a great marbling EPD.

**Exposed to Holton Conspiracy 080H (#4433641) 4/26/2023-6/15/2023, then SRN**

**Draft Pick 2213 (#4628861)**

**6/15/2023-9/26/2023.**

**Ultrasound confirmed due early May.**



ANDRAS MR BLACK JEANS R179  
 Sire of Lot 18

## Lot 19

### AAHR ABIGRACE 208K

This female is visually impressive with her combination of look and mass; her presence is undeniable. She has the look of a maternal powerhouse – massive, big ribbed and stout with a ton of dimension. Mated to Mossy Oak, we think her first calf could pay for the investment in her.

**AI bred 3/16/23 to Six Mile Mossy Oak 175H (#4547373). Due 12/22/23.**



RED SIX MILE MOSSY OAK  
A.I. Service Sire to Lot 19

## Lot 19

From the herd of: Hornung Red Angus

### AAHR ABIGRACE 208K

Bred Heifer	Reg. #	Calved	Tattoo	Cat	% Breed	BW	WW
	4622087	01-19-2022	208K AAHR	A	100% AR	85	763

RED SOO LINE POWER EYE 161X  
**H/H RECLUSE 8003**  
SLGN STONY'S BECCA 4215

RED COCKBURN RIBEYE 308U  
RED TR LYNN 301R  
SLGN YOUNG GUN 109Y  
C-BAR TILLY U896

HXC CONQUEST 4405P  
**DAMAR R544 ABIGRACE 4405P B0**  
BROWN C- A502M ABIGRACE R544

BECKTON JULIAN GG B571  
HXC ELLIE MAY MA638  
LCC MAJOR LEAGUE A502M  
BROWN MS ABIGRACE L7730



ProS	HB	GM	CED	BW	WW	YW	MILK	ME	HPG	CEM	STAY	MARB	CW	REA	FAT
89	45	44	9	-0.4	78	122	19	6	11	4	15	0.41	36	0.11	0
56%	71%	35%	92%	77%	5%	8%	94%	64%	54%	93%	59%	50%	11%	53%	17%

## Lot 20

From the herd of: Hornung Red Angus

### AAHR ABIGRACE 215K

Bred Heifer	Reg. #	Calved	Tattoo	Cat	% Breed	BW	WW
	4622099	02-09-2022	215K AAHR	A	100% AR	62	666

PIE STOCKMAN 4051  
**BIEBER CL STOCKMARKET E119**  
BIEBER CL ADELLE 475C

LSF SAGA 1040Y  
PIE LAKOTA 046  
ANDRAS FUSION R236  
BIEBER ADELLE 297Y

PIE CINCH 4126  
**AAHR ABIGRACE 035H**  
DAMAR R544 ABIGRACE 4405P B0

LSF SAGA 1040Y  
TKP BONNE BEL 110  
HXC CONQUEST 4405P  
BROWN C- A502M ABIGRACE R544



ProS	HB	GM	CED	BW	WW	YW	MILK	ME	HPG	CEM	STAY	MARB	CW	REA	FAT
95	41	54	15	-5	66	109	23	4	7	10	13	0.69	21	0.07	0.05
46%	77%	19%	25%	6%	29%	26%	76%	56%	98%	8%	75%	8%	57%	63%	97%

## Lot 20

### AAHR ABIGRACE 215K

Abigrace females do not disappoint. This Stockmarket female is ultra cowy, sound structured with an attractive look. She is bred to Berwald Confident 2044; he was a high selling bull bought by ABS. This will be one of the first calves to hit the ground next spring. This heifer has a bright future in someone's donor pen.

**AI bred 6/17/23 to Berwald Confident 2044 (#4687927). Due 3/25/24.**



BERWALD CONFIDENT 2044  
A.I Service Sire to Lot 20



## Lot 21 JFCC MIMI 253

Go to [www.redangus.org](http://www.redangus.org), under Data Searches & Tools click on EPD Search. Enter a minimum 145 YW and minimum 1 Marbling. As of the writing of this footnote, only 10 registered 1A females appear – one of which is JFCC Mimi 253. This female represents big time genetic merit in elite company within the breed! This female is the kind of investment that can move the needle!

**AI bred 4/12/23 to C-BAR Collateral 203J (#4534315). Due 1/19/24.**

## Lot 21

From the herd of: Johnson Family Cattle

### JFCC MIMI 253

Bred Heifer	Reg. #	Calved	Tattoo	Cat	% Breed	BW	WW
	4599711	01-12-2022	253 JFCC	A	100% AR	70	558

PIE STOCKMAN 4051  
**BIEBER CL STOCKMARKET E119**  
 BIEBER CL ADELLE 475C

LSF SAGA 1040Y  
 PIE LAKOTA 046  
 ANDRAS FUSION R236  
 BIEBER ADELLE 297Y

BIEBER LET'S ROLL B563  
**SRN MIMI 2011**  
 SRN MIMI Y142

BIEBER ROLLIN DEEP Y118  
 BASIN PRIMROSE 2043  
 TJS RIBEYE KING 9103  
 SRN MIMI 8136



ProS	HB	GM	CED	BW	WW	YW	MILK	ME	HPG	CEM	STAY	MARB	CW	REA	FAT
125	32	92	13	-1.1	84	145	23	9	9	8	12	1.06	42	0.33	0.04
9%	88%	1%	42%	64%	1%	1%	74%	83%	89%	27%	86%	1%	4%	14%	90%

## Lot 22

From the herd of: Johnson Family Cattle

### JFCC CHLOE 268

Bred Heifer	Reg. #	Calved	Tattoo	Cat	% Breed	BW	WW
	4599723	04-01-2022	268 JFCC	A	100% AR	74	571

HXC DECLARATION 5504C  
**JOHNSON BLW FALCON 861**  
 HXC PATRICIA ROSE 102Y

LEACHMAN PLEDGE A282Z  
 HXC190Y  
 BECKTON NEBULA P P707  
 HXC 502R

BROWN JYJ REDEMPTION Y1334  
**JFCC CHLOE 959**  
 JFCC CALIENTE 755

BECKTON NEBULA P P707  
 JYJ MS JOLENE W16  
 SSR FUEGO 6B  
 SLGN RACHEL 224Z



ProS	HB	GM	CED	BW	WW	YW	MILK	ME	HPG	CEM	STAY	MARB	CW	REA	FAT
73	35	38	12	-2	61	104	21	7	14	6	12	0.45	24	-0.17	0.01
80%	85%	48%	59%	47%	49%	34%	88%	73%	9%	66%	85%	40%	45%	97%	40%



## Lot 22 JFCC CHLOE 268

Call me crazy, but this one looks like a bull mama. You know, the kind with that extra punch to make the big, stout ones. I like to picture an animal's pedigree like a pen of cattle (now you really are going to call me crazy). In this heifer's case, that pen would be full of consistent, super productive, powerful cows. With powerful genetics like hers, there's a good chance her Collateral calf will pay for mama and then some!

**AI bred 5/10/23 to C-BAR Collateral 203J (#4534315). Due 2/16/24.**



JFCC CALIENTE 755 Grand Dam of Lot 22

## Lot 23 SRN MARY 2250

2250's dam, SRN Mary 1979, has an MPPA of 104, she knows how to raise a calf! Her sire, a Spartacus son out of an Abigrace adds performance. She goes back to LCHMN Eleanor J1274, an outcross deluxe, that we purchased in 2003. She's bred to Finished Product, a calving ease bull who makes fantastic females with impeccable udders. If you want to see a Finished Product daughter, take a look at Lot 7, SRN AA Elsa 2342.

**AI bred 5/5/2023 to Collier Finished Product (#3861137). Due 2/11/2024.**



COLLIER FINISHED PRODUCT  
A.I. Service Sire to Lot 23

## Lot 23

From the herd of: Shamrock Nook Red Angus

### SRN MARY 2250

Bred Heifer	Reg. #	Calved	Tattoo	Cat	% Breed	BW	WW
	4628931	02-05-2022	2250 1JD	A	100% AR	76	666

BIEBER SPARTACUS A193  
**SRN SPARTACUS 1907**  
SRN ABIGRACE 1655

BIEBER ROUSE SAMURAI X22  
BIEBER TILLY 233U  
RED BRYLOR RED KODIAK 3A  
BROWN MS MSTATEMT W7923

SRN ALISTAR 1635  
**SRN MARY 1979**  
SRN ELEANOR 1672

BIEBER ROLLIN DEEP Y118  
MESSMER LINDA T112  
SRN DEPOT 1404  
SRN ELEANOR 7841

## Lot 24

From the herd of: Shamrock Nook Red Angus

### SRN ROSIE 2221

Bred Heifer	Reg. #	Calved	Tattoo	Cat	% Breed	BW	WW
	4628877	01-12-2022	2221 1JD	A	100% AR	72	541

BIEBER ROLLIN DEEP Y118  
**BIEBER LET'S ROLL B563**  
BASIN PRIMROSE 2043

BIEBER ROOSEVELT W384  
BIEBER TILLY 399W  
BFCK CHEROKEE CNYN 4912  
BASIN PRIMROSE 0854

SRN FUSION 1658  
**SRN ROSIE 1931**  
SRN ROSIE 1652

ANDRAS FUSION R236  
SRN ELEANOR 1326  
RED BRYLOR RED KODIAK 3A  
SRN EXT 513

ProS	HB	GM	CED	BW	WW	YW	MILK	ME	HPG	CEM	STAY	MARB	CW	REA	FAT
77	47	30	12	-1	76	112	28	2	10	7	14	0.48	29	0.33	0.02
75%	66%	67%	63%	66%	7%	19%	32%	43%	81%	48%	74%	34%	28%	14%	58%

ProS	HB	GM	CED	BW	WW	YW	MILK	ME	HPG	CEM	STAY	MARB	CW	REA	FAT
104	61	43	13	-1.1	61	101	22	0	15	6	15	0.45	33	0.05	0.04
32%	38%	38%	42%	64%	47%	41%	84%	34%	7%	70%	55%	40%	17%	67%	83%

## Lot 24 SRN ROSIE 2221

This Let's Roll daughter goes back to Messmer Rosie 9874, whom we bought from Messmer's in 1999. In 2001, she took Grand Champion Female at the Iowa State Fair. 2221 is solid and carries herself well. Bred to a Payweight son, she is expected to have a heifer calf.

**Exposed to EEC Payweight 35G 24K (#4612745) 5/20/2023-7/24/2023. Ultrasound confirmed due early March.**



BIEBER LET'S ROLL B563 Sire of Lot 24



## Lot 25

### AAHR RACING LAKOTA 212K

This bred heifer is everybody's kind. She is a true powerhouse cow in the making. You couldn't possibly make one bolder, wider, stouter and bigger ribbed. Confirmed bred to Guidance, a mating I'm pretty excited about. Make sure to find her on sale day.

**AI bred 5/9/23 to EGL Guidance 9117 (#4208972). Due 2/14/24.**



EGL GUIDANCE 9117 A.I. Service Sire to Lot 25

## Lot 25

From the herd of: Hornung Red Angus

### AAHR RACING LAKOTA 212K

Bred Heifer	Reg. #	Calved	Tattoo	Cat	% Breed	BW	WW
	4622093	01-30-2022	212K AAHR	A	100% AR	105	833

DKF ELIMINATOR 15A  
**RED DKF RAZOR 55C**  
 DKF MISS NET WORTH 21A

S A V ELIMINATOR 9105  
 RED DKF MISS POWER 17P  
 S A V NET WORTH 4200  
 DKF MISS POWER UP 95X

BIEBER ROLLIN DEEP Y118  
**AAHR ROLLING LAKOTA 705E**  
 AAHR LAKOTA 441B

BIEBER ROOSEVELT W384  
 BIEBER TILLY 399W  
 HUSTON GRAVITY 1059Y  
 GMRA LAKOTA 247



ProS	HB	GM	CED	BW	WW	YW	MILK	ME	HPG	CEM	STAY	MARB	CW	REA	FAT
35	-9	44	1	4.4	78	126	30	11	12	0	10	0.38	43	0.28	0.02
99%	99%	35%	99%	99%	5%	5%	16%	91%	37%	99%	95%	57%	3%	20%	58%

## Lot 26

From the herd of: Shamrock Nook Red Angus

### SRN AA TARMILLY 2287

Bred Heifer	Reg. #	Calved	Tattoo	Cat	% Breed	BW	WW
	4641861	03-27-2022	2287 1JD	A	100% AR	80	563

SRN ALISTAR 1635  
**SRN ALISTAR 2051**  
 AAHR CASSIDY 512C

BIEBER ROLLIN DEEP Y118  
 MESSMER LINDA T112  
 FRITZ JUSTICE 8013  
 HORNUNG CASSIDY 100R

RED SSS ENDORSE 639X  
**AAHR TARMILLY 730**  
 DFRA TARMILLY N512

RED T-K ENERGIZER 13T  
 RED SSS BELLE 612P  
 BIEBER MAKE MIMI 7249  
 DFRA TARMILLY N305

ProS	HB	GM	CED	BW	WW	YW	MILK	ME	HPG	CEM	STAY	MARB	CW	REA	FAT
62	52	10	13	-1	59	90	25	5	8	8	16	0.27	14	0.21	0.01
91%	56%	94%	42%	66%	58%	66%	52%	62%	95%	27%	40%	84%	82%	32%	37%



## Lot 26

### SRN AA TARMILLY 2287

2287 is a moderate framed, docile heifer. Her dam, AAHR Tarmilly 730, has a MPPA of 104, a real maternal cow. 2287 is bred to our Franchise son, SRN Duke 2103 (ProS-25%, HB-32%, GM-34%), who is a great maternal bull with an easy-going temperament. Here's your chance to get a Tarmilly to build your herd.

**Exposed to SRN Duke 2103 (#4444755) 6/15/2023-8/5/2023. Ultrasound confirmed due mid April.**



SRN DUKE 2104 Service Sire to Lot 26

## Lot 27 JFCC TARMILY 184

The opportunity to buy a direct daughter of the great Tarmily cow is a window that's closing quickly. You won't find a lot of her progeny around anymore, and even fewer are for sale! Who doesn't love dark red, easy fleshing heifers that are super sound and built for the long haul?!

AI bred 4/12/23 to C-BAR Collateral 203J (#4534315). Exposed to C-BAR Collateral 203J 5/21/23-9/16/23. Ultrasound confirmed due 3/13/24.



DFRA TARMILY N512 Dam of Lot 27



Lot **27**

From the herd of: Johnson Family Cattle

## JFCC TARMILY 184

Bred Heifer	Reg. #	Calved	Tattoo	Cat	% Breed	BW	WW
	4529655	12-14-2021	184 JFCC	A	100% AR	70	514

LSF TAKEOVER 9943W  
**BROWN AA SENSATIONAL B5147**  
 BROWN MS DESTINATION T7634

HXC CONQUEST 4405P  
 LSF WIDELOAD R5014 U8061  
 5L DESTINATION 893-6215  
 BROWN MS CHEROKEE P7916

BIEBER MAKE MIMI 7249  
**DFRA TARMILY N512**  
 DFRA TARMILY N305

BJR MAKE MY DAY 981  
 BIEBER SIRENA 6708  
 DFRA TARGET 524L  
 DFRA TARMAR 432



ProS	HB	GM	CED	BW	WW	YW	MILK	ME	HPG	CEM	STAY	MARB	CW	REA	FAT
113	55	58	17	-4.1	53	82	25	1	10	9	15	0.64	18	0.1	0.01
20%	50%	14%	6%	13%	77%	79%	54%	36%	75%	18%	50%	12%	70%	56%	25%

Lot **28**

From the herd of: Johnson Family Cattle

## JFCC SAMANTHA 248

Bred Heifer	Reg. #	Calved	Tattoo	Cat	% Breed	BW	WW
	4617181	01-05-2022	248 JFCC	A	100% AR	70	510

CRUMP MAGNITUDE 5507  
**CRUMP NEW DECADE 9341**  
 TR BRANDY XT074

BROWN PREMIER X7876  
 CRUMP TABITHA 3140  
 TR EPIC ST618  
 TR COCA RT527

BECKTON NEBULA P P707  
**BROWN MS P707 X7539**  
 BROWN MS RETAIL PRODUCT U772

BECKTON NEBULA M045  
 BECKTON LANA M809 EP  
 G A R RETAIL PRODUCT  
 BROWN MS VACATION N7921



ProS	HB	GM	CED	BW	WW	YW	MILK	ME	HPG	CEM	STAY	MARB	CW	REA	FAT
113	56	56	21	-5.6	45	82	30	0	13	11	14	0.48	33	-0.08	0.06
20%	47%	16%	1%	4%	92%	80%	17%	30%	18%	1%	74%	34%	17%	90%	99%

## Lot 28

### JFCC SAMANTHA 248

This heifer's dam was a donor at R.A. Brown Ranch and Ludvigson Stock Farms before making her way to Shawano, WI. X7539 was a powerhouse female that produced stout bulls and feminine, broody females – including a bred heifer in 2022 Females of Fall that made plenty of friends. This New Decade daughter is a medium-sized female that's fertile, easy keeping and bred AI early to Collateral. If this one matures into a cow like her mother, you might get a call from the gents at RAB and LSF!

AI bred 3/29/23 to C-BAR Collateral 203J (#4534315). Due 1/5/24.



BROWN MS P707 X7539 Dam of Lot 28





SRN STONY 1555 Dam of Lot 29

**LOT 29 – SRN STONY 2230**  
 Exposed to EEC Payweight 35G 24K (#4612745)  
 5/20/2023-7/24/2023.  
 Ultrasound confirmed due 3/4/2024.



EEC PAYWEIGHT 35G 24K  
 Service Sire to Lot 30

**LOT 30 – SRN STONY 2231**  
 Exposed to EEC Payweight 35G 24K (#4612745)  
 5/20/2023-7/24/2023.  
 Ultrasound confirmed due 3/2/2024.



HOLTON CONSPIRACY 080H  
 Service Sire to Lot 31

**LOT 31 – SRN STELLA 2227**  
 Exposed to Holton Conspiracy 080H (#4433641)  
 4/26/2023-6/15/2023.  
 Ultrasound confirmed due 2/13/2024.

# Lot 29

From the herd of: Shamrock Nook Red Angus

## SRN STONY 2230

Bred Heifer	Reg. #	Calved	Tattoo	Cat	% Breed	BW	WW
	4628893	01-19-2022	2230 1JD	A	100% AR	79	615

BIEBER SPARTACUS A193  
**SRN SPARTACUS 1915**  
 SRN CASSIDY 1617

BIEBER ROUSE SAMURAI X22  
 BIEBER TILLY 233U  
 BIEBER ROOSEVELT W384  
 SRN CASSIDY 7881

SCC STEIGER S36  
**SRN STONY 1555**  
 SRN STONY 1342

S.C.C. HAMLEY S114  
 S.C.C. AMY S01  
 TJS DEPOT 9095  
 SRN MS STONY X51

ProS	HB	GM	CED	BW	WW	YW	MILK	ME	HPG	CEM	STAY	MARB	CW	REA	FAT
95	68	26	16	-3.3	66	102	26	3	11	8	18	0.38	27	0.17	0.05
46%	24%	73%	13%	23%	30%	40%	45%	50%	56%	39%	20%	57%	36%	40%	95%

If you're looking for a replacement heifer with great scores for herd builder, calving ease, birthweight, stayability and calving ease maternal, you can find them right here. 2230's dam, SRN Stony 1555, has an MPPA of 102. She's bred to a Payweight son, who also excels in calving ease, along with BW, WW, and STAY traits. She's expected to have a heifer calf.

# Lot 30

From the herd of: Shamrock Nook Red Angus

## SRN STONY 2231

Bred Heifer	Reg. #	Calved	Tattoo	Cat	% Breed	BW	WW
	4628895	01-19-2022	2231 1JD	A	100% AR	70	577

BIEBER SPARTACUS A193  
**SRN SPARTACUS 1915**  
 SRN CASSIDY 1617

BIEBER ROUSE SAMURAI X22  
 BIEBER TILLY 233U  
 BIEBER ROOSEVELT W384  
 SRN CASSIDY 7881

3SCC OSCAR Z612  
**SRN MS STONY 1504**  
 SRN MS STONY X51

RED CROWFOOT OLE'S OSCAR  
 JACOBSON GRETTA 0030  
 HXC HEMI 4400P  
 HCFA MS STONY 787

ProS	HB	GM	CED	BW	WW	YW	MILK	ME	HPG	CEM	STAY	MARB	CW	REA	FAT
102	64	38	16	-3.8	63	100	23	5	10	10	16	0.52	27	0.02	0.05
34%	31%	48%	9%	17%	41%	44%	75%	58%	77%	5%	37%	26%	33%	74%	93%

Just like Stony 2230, this girl is also sired by 1915, is bred to Payweight, comes from an 8-year-old dam, has great maternal traits, and is having a heifer calf. Sounds like they should be twins, but they're not. We know you would be happy with either one, or even happier with both!

# Lot 31

From the herd of: Shamrock Nook Red Angus

## SRN STELLA 2227

Bred Heifer	Reg. #	Calved	Tattoo	Cat	% Breed	BW	WW
	4628887	01-15-2022	2227 1JD	A	100% AR	71	577

BIEBER SPARTACUS A193  
**SRN SPARTACUS 1915**  
 SRN CASSIDY 1617

BIEBER ROUSE SAMURAI X22  
 BIEBER TILLY 233U  
 BIEBER ROOSEVELT W384  
 SRN CASSIDY 7881

TJS DEPOT 9095  
**SRN ELEANOR 1318**  
 SRN ELEANOR 7841

LORENZEN JULIAN 3811  
 TJS LARKABA MA509  
 BIEBER MAKE MIMI 7249  
 LCHMN ELEANOR J1274

ProS	HB	GM	CED	BW	WW	YW	MILK	ME	HPG	CEM	STAY	MARB	CW	REA	FAT
108	76	32	15	-3.4	59	90	24	-2	8	8	19	0.44	24	0.1	0.04
26%	13%	62%	20%	22%	57%	65%	67%	24%	95%	22%	11%	42%	48%	56%	90%

The HerdBuilder index for 2227 falls at 13% for a reason. Her maternal traits -CED, BW, ME, CEM and STAY are at 25% or better. Her 10-year-old dam had 8 calves, 7 of them females, 2227 is expected to follow suit with a heifer calf. She's bred to Holton Conspiracy 080H who is a phenomenal female maker. The females behind him from the Stony and Lakota cow families have great feet, great udders, and great dispositions.

# Lot 32

## SRN ABIGRACE 2205

Here's a genetic powerhouse. She earned HUGE indexes, including a ProS that's in the top 2% of the breed (#1 in the offering) HB in the top 5% (#2 in the offering), GM in the top 12% (#2 in the offering). Not to mention a Marbling EPD in the top 2% of the entire Red Angus breed! That all sounds cool, but what does it mean?! It means she has the genetic value to improve your herd for the better; take a good look at this female.

**Exposed to EEC Payweight 35G 24K (#4612745) 5/20/2023-7/24/2023, then SRN Duke 2103 (#4444755) 8/1/2023-9/30/2023. Ultrasound confirmed due late March.**



STRA RELENTLESS Sire of Lot 32



Chance

# Lot 32

From the herd of: Shamrock Nook Red Angus

## SRN ABIGRACE 2205

Bred Heifer	Reg. #	Calved	Tattoo	Cat	% Breed	BW	WW
	4628845	12-31-2021	2205 1JD	A	100% AR	74	561

BIEBER DRIVEN C540  
**STRA RELENTLESS**  
STRA CHEREBAL 305

BIEBER HARD DRIVE Y120  
BIEBER JOAN 309Y  
LARSON SUN KING 016  
STRA MISS TRACKER 141

FRITZ JUSTICE 8013  
**SRN ABIGRACE 1705**  
SRN MS ABIGRACE 1463

VGW JUSTICE 614  
FRITZ CHRIS 6047  
BROWN BATTLESHIP Z7275  
BROWN MS MSTATEMT W7923

ProS	HB	GM	CED	BW	WW	YW	MILK	ME	HPG	CEM	STAY	MARB	CW	REA	FAT
146	87	60	15	-3.7	58	91	29	-3	12	10	18	0.87	17	0.12	0.04
2%	5%	12%	17%	18%	61%	63%	24%	21%	38%	7%	18%	2%	74%	51%	86%

# Lot 33

From the herd of: Shamrock Nook Red Angus

## SRN PENNY 2206

Bred Heifer	Reg. #	Calved	Tattoo	Cat	% Breed	BW	WW
	4628847	01-05-2022	2206 1JD	A	100% AR	85	595

C-T RED QUEST 4010  
**OVER DRAFT PICK 413D**  
OVER BLUSH 413B

BROWN JYJ REDEMPTION Y1334  
C-T BLOCKANA 2023  
SLGN YARDMASTER 125Y  
C-BAR ABIGRACE X13

SRN FUSION 1533  
**SRN PENNY 1820**  
SRN PENNY 9022

ANDRAS FUSION R236  
SRN BERRY 1355  
BASIN TREND SETTER 45S4  
SRN PENNY 6146

ProS	HB	GM	CED	BW	WW	YW	MILK	ME	HPG	CEM	STAY	MARB	CW	REA	FAT
118	64	53	13	-1.6	58	93	27	6	12	9	16	0.67	25	0.03	0.01
15%	31%	20%	39%	55%	59%	60%	34%	65%	35%	13%	40%	9%	43%	72%	40%

# Lot 33 SRN PENNY 2206

Here's a Draft Pick daughter whose dam has a calving interval of 363 along with her grand dam, Penny 9022, a 14-year-old cow whose calving interval is 364. ProS, HB, and GM fall in the top third of the breed for 2206. She's bred to Conspiracy and expected to have a bull calf. He could be your next herd sire. Put her at the top of your list.

**Exposed to Holton Conspiracy 080H (#4433641) 4/26/2023-6/15/2023. Ultrasound confirmed due 2/28/2024.**



OVER DRAFT PICK 413D Sire of Lot 33



Chance



**LOT 34 – SRN SALLY 2257**  
 Exposed to Holton Conspiracy 080H (#4433641)  
 4/26/2023-6/15/2023.  
 Ultrasound confirmed due 2/23/2024.

SRN SALLY 2156 Maternal Sister to Lot 34



**LOT 35 – SRN AA JOAN 2280**  
 Exposed to Holton Conspiracy 080H (#4433641)  
 4/26/2023-6/15/2023.  
 Ultrasound confirmed due 2/13/2024.

HOLTON CONSPIRACY 080H  
 Service Sire to Lot 35



**LOT 36 – SRN ESTER 2269**  
 Exposed to EEC Payweight 35G 24K (#4612745)  
 5/20/2023-7/24/2023.  
 Ultrasound confirmed due 3/22/2024.

9 MILE QUARTERBACK 0002  
 Sire of Lot 36

# Lot 34

From the herd of: Shamrock Nook Red Angus

## SRN SALLY 2257

Bred Heifer Reg. # Calved Tattoo Cat % Breed BW WW  
 4628945 02-08-2022 2257 1JD 3 75% AR 82 653

BIEBER SPARTACUS A193  
**SRN SPARTACUS 1915**  
 SRN CASSIDY 1617

BIEBER ROUSE SAMURAI X22  
 BIEBER TILLY 233U  
 BIEBER ROOSEVELT W384  
 SRN CASSIDY 7881

BIEBER IRON ORE B212  
**SRN SALLY 1711**  
 NOT ON FILE

PARINGA IRON ORE E27  
 BIEBER TILLY 105T

ProS	HB	GM	CED	BW	WW	YW	MILK	ME	HPG	CEM	STAY	MARB	CW	REA	FAT
104	49	56	11	-0.6	67	105	27	-4	11	5	14	0.57	40	0.24	0.05
31%	63%	17%	70%	74%	27%	33%	41%	20%	58%	91%	66%	19%	5%	26%	97%

2257 is out of an Iron Ore daughter who has an MPPA of 107, that's pretty impressive. 2257 is a category III due to a mix up on registering her grand dam who was a beautiful black Angus cow. Her calf will move up to 1B status. Her maternal sister sold in last year's sale and now resides in Illinois.

# Lot 35

From the herd of: Shamrock Nook Red Angus

## SRN AA JOAN 2280

Bred Heifer Reg. # Calved Tattoo Cat % Breed BW WW  
 4641867 03-04-2022 2280 1JD A 100% AR 75 552

BIEBER SPARTACUS A193  
**SRN SPARTACUS 1907**  
 SRN ABIGRACE 1655

BIEBER ROUSE SAMURAI X22  
 BIEBER TILLY 233U  
 RED BRYLOR RED KODIAK 3A  
 BROWN MS MSTATEMT W7923

MILWILLAH MARBLE BAR J53  
**BIEBER JOAN 518G**  
 BIEBER JOAN 413E

MILWILLAH FEVOLA F37  
 MILWILLAH LOWAN G291  
 PIE STOCKMAN 4051  
 BIEBER JOAN 396C

ProS	HB	GM	CED	BW	WW	YW	MILK	ME	HPG	CEM	STAY	MARB	CW	REA	FAT
83	31	52	12	-0.1	76	123	25	3	11	7	11	0.66	32	0.23	0.04
66%	90%	21%	59%	81%	7%	7%	55%	51%	66%	41%	93%	10%	17%	28%	93%

Here's a big-time performance bred female that has growth figures in the top 7% of the breed, and posted impressive individual performance ratios- 106 WW, 107 YW. If you want to build a foundation on cattle that are super fertile and mash the scales down, you need to check out this heifer. Be sure to ask grandson Aaron about this one!

# Lot 36

From the herd of: Shamrock Nook Red Angus

## SRN ESTER 2269

Bred Heifer Reg. # Calved Tattoo Cat % Breed BW WW  
 4628969 02-24-2022 2269 1JD A 100% AR 69 577

PIE QUARTERBACK 789  
**9 MILE QUARTERBACK 0002**  
 6R CAMEO 723E

PIE STOCKMAN 4051  
 PIE RUBY 520  
 6R 420B  
 6R CAMEO 323A

SRN FUSION 1658  
**SRN ESTER 2079**  
 SRN ESTER 1762

ANDRAS FUSION R236  
 SRN ELEANOR 1326  
 BIEBER IRON ORE B212  
 SRN ESTER 1323

ProS	HB	GM	CED	BW	WW	YW	MILK	ME	HPG	CEM	STAY	MARB	CW	REA	FAT
115	59	56	12	-1.9	64	110	27	6	11	6	17	0.66	21	0.01	0.02
17%	41%	16%	64%	49%	36%	24%	39%	69%	49%	72%	26%	10%	59%	76%	51%

The Ester line traces to foundation, outcross Leachman genetics, and this female offers worlds of potential for a breeder looking to create something special. She's in the top 10% of the breed for marbling, and she sells bred to a super unique bull. On top of all that, she's not hard on the eyes either!

Lot **37**

From the herd of: Johnson Family Cattle

## JFCC DANCE 264

Bred Heifer Reg. # Calved Tattoo Cat % Breed BW WW  
 4599719 03-22-2022 264 JFCC A 100% AR 77 562

HXC DECLARATION 5504C  
**JOHNSON BLW FALCON 861**  
 HXC PATRICIA ROSE 102Y

LEACHMAN PLEDGE A282Z  
 HXC190Y  
 BECKTON NEBULA P P707  
 HXC 502R

BROWN AA SENSATIONAL B5147  
**JFCC DANCE 850**  
 HUSTON DANCE 2013Z

LSF TAKEOVER 9943W  
 BROWN MS DESTINATION T7634  
 MUSHRUSH LOCK 'N' LOAD U213  
 SRN DANCE 1503



ProS	HB	GM	CED	BW	WW	YW	MILK	ME	HPG	CEM	STAY	MARB	CW	REA	FAT
88	27	61	11	0.4	73	125	21	4	14	5	10	0.6	28	-0.14	0.02
58%	93%	11%	75%	87%	10%	6%	89%	53%	9%	84%	95%	16%	31%	95%	46%

We're committed to bringing our best to Females of Fall, otherwise a heifer like this wouldn't be for sale. It's not very often that we will sell a Dance female! This heifer's dam is a beauty, and produces well. I expect this female to be just the same, but with more punch from the Falcon bull. These bred heifers from powerful cow lines are the kind to make a guy look really smart.



*Chance*

LOT 37 – JFCC DANCE 264  
 AI bred 5/24/23 to C-BAR Collateral 203J (#4534315).  
 Due 3/1/24.



HUSTON DANCE 2013Z  
 Grand Dam of Lot 37

Lot **38**

From the herd of: Johnson Family Cattle

## JFCC CASSIDY 257

Bred Heifer Reg. # Calved Tattoo Cat % Breed BW WW  
 4599715 01-25-2022 257 JFCC A 100% AR 65 511

5L INDEPENDENCE 560-298Y  
**FEDDES LIBERTY D210**  
 FEDDES SLEEK 806

BUF CRK THE RIGHT KIND U199  
 5L BLACK ADINA 525-560  
 BIEBER ROMERO 9136  
 FEDDES SLEEK 2S

3SCC DOMAIN A163  
**SRN CASSIDY 2018**  
 SRN CASSIDY 1617

BECKTON DOMINOR T122 Z1  
 3SCC EUCLA X723  
 BIEBER ROOSEVELT W384  
 SRN CASSIDY 7881



ProS	HB	GM	CED	BW	WW	YW	MILK	ME	HPG	CEM	STAY	MARB	CW	REA	FAT
104	58	45	15	-2.4	58	98	25	4	12	5	18	0.55	22	-0.22	0.01
32%	43%	33%	23%	39%	60%	49%	59%	52%	44%	89%	15%	22%	55%	98%	44%

Here's another Cassidy, see lot 4's footnote about the power of the Cassidy females. Sneaky smart buy here. With cull cows selling for over a dollar per pound, you can upgrade your genetics for limited extra investment and sell her calves at the top of the market cycle.



*Chance*

LOT 38 – JFCC CASSIDY 257  
 Exposed to C-BAR Collateral 203J (#4534315)  
 5/21/23-9/16/23.  
 Ultrasound confirmed due mid-March.



SRN CASSIDY 2018  
 Dam of Lot 38

Lot **39**

From the herd of: Johnson Family Cattle

## JFCC IVORY 267

Bred Heifer Reg. # Calved Tattoo Cat % Breed BW WW  
 4599721 03-30-2022 267 JFCC 2 100% AR 58 547

CRUMP MAGNITUDE 5507  
**CRUMP NEW DECADE 9341**  
 TR BRANDY XT074

BROWN PREMIER X7876  
 CRUMP TABITHA 3140  
 TR EPIC ST618  
 TR COCA RT527

GMRA TRINITY 5222  
**JFCC PADO IVORY H011**  
 PADO LIZ E719

GMRA TRILOGY 0226  
 GMRA INDIGO 615  
 HXC CONQUEST 4405P  
 PADO HILDA C527



ProS	HB	GM	CED	BW	WW	YW	MILK	ME	HPG	CEM	STAY	MARB	CW	REA	FAT
111	59	52	17	-4.3	55	100	31	8	12	11	16	0.3	35	0.15	0.05
22%	41%	22%	5%	11%	70%	44%	9%	77%	39%	3%	49%	77%	13%	45%	97%

Don't sleep on this one. Here's a dark red, easy going female from a cow that's the same way. She's a Category 2 due to some white ahead of her navel, but her calves can be fully registered 1A cattle like any others. Take her home and let her make you money.



*Chance*

LOT 39 – JFCC IVORY 267  
 Exposed to C-BAR Collateral 203J (#4534315) 5/21/23-9/16/23.  
 Ultrasound confirmed due 3/27/24.



GB FIREBALL 682 Service Sire of Lot 40

**LOT 40 – SRN CASSIE 2203**  
**AI bred 5/5/2023 to GB Fireball 672 (#4063932).**  
**Due 2/11/2024.**



**LOT 41 – SRN ELEANOR 2276**

**Exposed to Holton Conspiracy 080H (#4433641) 4/26/2023-6/15/2023, then SRN Draft Pick 2213 (#4628861) 6/15/2023-9/26/2023. Ultrasound confirmed due 5/9/2024.**



BIEBER CL STOCKMARKET E119  
 20 Sire of Lot 42

**LOT 42 – AAHR ABIGRACES STOCK 130J**

**Exposed to EEC Payweight 35G 24K (#4612745) 5/20/2023-7/24/2023, then SRN Duke 2103 (#4444755) 8/1/2023-9/26/2023. Ultrasound confirmed due mid May.**

# Lot 40

From the herd of: Shamrock Nook Red Angus

## SRN CASSIE 2203

Bred Heifer	Reg. #	Calved	Tattoo	Cat	% Breed	BW	WW
	4628841	01-01-2022	2203 1JD	A	100% AR	71	501

BIEBER SPARTACUS A193  
**SRN SPARTACUS 1915**  
 SRN CASSIDY 1617

BIEBER ROUSE SAMURAI X22  
 BIEBER TILLY 233U  
 BIEBER ROOSEVELT W384  
 SRN CASSIDY 7881

BECKTON ACCENT B712 N2  
**SRN CASSIE 1757**  
 SLGN 8323 CLAIRE 536C

BECKTON ACCENT U777 C2  
 BECKTON LARKEISA W687 N  
 SLGN YOUNG GUN 109Y  
 SLGN R91 UNFORGETTABLE

ProS	HB	GM	CED	BW	WW	YW	MILK	ME	HPG	CEM	STAY	MARB	CW	REA	FAT
95	78	17	16	-4	46	70	26	-4	11	9	18	0.45	4	-0.16	0.05
45%	11%	87%	11%	14%	90%	92%	48%	18%	57%	18%	16%	40%	97%	96%	95%

The grand dam of SRN Cassie 2203 is a cow we bought from Solution Genetics who goes back to our Blaze bull. She's got Accent, a breed leader in BW and CED (top 1%), and Spartacus behind her, and she's bred to GB Fireball, a black Angus bull, who is a proven trait leader in calving ease, performance, marbling and ribeye. She's predicted to have a heifer.

# Lot 41

From the herd of: Shamrock Nook Red Angus

## SRN ELEANOR 2276

Bred Heifer	Reg. #	Calved	Tattoo	Cat	% Breed	BW	WW
	4628983	02-28-2022	2276 1JD	2	100% AR	82	617

BIEBER SPARTACUS A193  
**SRN SPARTACUS 1915**  
 SRN CASSIDY 1617

BIEBER ROUSE SAMURAI X22  
 BIEBER TILLY 233U  
 BIEBER ROOSEVELT W384  
 SRN CASSIDY 7881

V D A R REALLY WINDY 4097  
**SRN ELEANOR 1326**  
 SRN ELEANOR Y130

A A R REALLY WINDY 1205  
 VDAR BLACKBIRD 2031  
 TJS DEPOT 9095  
 SRN ELEANOR 6036

ProS	HB	GM	CED	BW	WW	YW	MILK	ME	HPG	CEM	STAY	MARB	CW	REA	FAT
102	62	40	13	-1.2	73	118	19	1	10	7	16	0.4	35	0.13	0.05
34%	36%	44%	50%	63%	12%	12%	95%	36%	73%	41%	46%	52%	13%	49%	95%

The Eleanor cow has stood the test of time for us. 2276 is out of a 10-year-old cow, SRN Eleanor 1326, that gave us one of our favorite herd sires. Her sire is VDAR Really Windy 4097 (a black Angus bull with a 19 CED and 122 YW), her calves have been exceptional. 2276 is due to have twins, they might be red, they might be black, or maybe one of each.

# Lot 42

From the herd of: Shamrock Nook Red Angus

## AAHR ABIGRACES STOCK 130J

Bred Heifer	Reg. #	Calved	Tattoo	Cat	% Breed	BW	WW
	4483345	09-25-2021	130J AAHR	A	100% AR	75	560

PIE STOCKMAN 4051  
**BIEBER CL STOCKMARKET E119**  
 BIEBER CL ADELLE 475C

LSF SAGA 1040Y  
 PIE LAKOTA 046  
 ANDRAS FUSION R236  
 BIEBER ADELLE 297Y

BIEBER CL ATOMIC C218  
**AAHR ATOMIC ABIGRACE 925G**  
 DAMAR R544 ABIGRACE 4405P B0

ANDRAS FUSION R236  
 BIEBER DATELINE 308Y  
 HXC CONQUEST 4405P  
 BROWN C- A502M ABIGRACE R544

ProS	HB	GM	CED	BW	WW	YW	MILK	ME	HPG	CEM	STAY	MARB	CW	REA	FAT
91	28	63	15	-2.9	74	122	25	9	7	10	12	0.86	24	0.31	0.05
52%	92%	9%	24%	30%	9%	8%	52%	83%	99%	5%	87%	2%	45%	16%	94%

The pedigree on this girl reads like a best seller, and her numbers top the charts. 130J has an exceptionally sweet disposition. She did such a good job in the picture pen that we kept her there as a support cow, she had a calming effect on the others. She's a little older girl because she's a fall calf that we held over to breed in spring.

## Lot 43

**AAHR FIND COPPER QUEEN 121J**  
Starting out the fall pairs is an incredibly maternal daughter out of our tried and true Copper Queen cow family. Here is a young female that will make her mark in a program. She is long bodied, beautiful fronted, sound and has a picture-perfect udder. The cherry on top is the smoking hot heifer calf at her side. It was a hard decision to offer this pair in the sale.

**Sells with heifer calf born 9/8/23, AAHR Just Copper Queen 337L (#4803508), sired by Pie Just Right 540 (#3503313).**



PIE JUST RIGHT 540 Sire of Lot 43 Calf



Chance

## Lot 43

Lot

From the herd of: Hornung Red Angus

### AAHR FIND COPPER QUEEN 121J

Cow/Calf Pair	Reg. #	Calved	Tattoo	Cat	% Breed	BW	WW
	4449359	03-31-2021	121J AAHR	A	100% AR	68	494

RREDS SENECA 731C  
**RREDS PATHFINDER F811**  
RREDS KIMA D607

BIEBER ROLLIN DEEP Y118  
RREDS ASTER 309A  
PIE CINCH 4126  
MCCR KIMA 1099

C-T GRAND STATEMENT 1025  
**AAHR GRAND COPPER QUEEN 435B**  
AAHR COPPER QUEEN 151X

LJC MISSION STATEMENT P27  
C-T MISS PAN 0760  
SODAK ALLIANCE 5L/S381  
SRN COPPER QUEEN M308



ProS	HB	GM	CED	BW	WW	YW	MILK	ME	HPG	CEM	STAY	MARB	CW	REA	FAT
95	52	43	17	-2.5	56	101	30	10	8	12	16	0.28	30	0.33	0.05
41%	61%	26%	7%	34%	61%	32%	18%	86%	93%	1%	54%	74%	17%	10%	96%

## Lot 44

Lot

From the herd of: Hornung Red Angus

### AAHR RACING ELEANOR 109J

Cow/Calf Pair	Reg. #	Calved	Tattoo	Cat	% Breed	BW	WW
	4449339	02-12-2021	109J AAHR	A	100% AR	73	602

RED DKF RAZOR 55C  
**RED DKF RACER 8E**  
RED DKFE MISS ACE 84C

DKF ELIMINATOR 15A  
DKF MISS NET WORTH 21A  
RED SOO LINE POWER EYE 161X  
RED BLUDAWN MISS ILICIT359Z

BIEBER SPARTACUS A193  
**AAHR SPARKY ELEANOR 813F**  
AAHR ELEANOR J1266 3025A

BIEBER ROUSE SAMURAI X22  
BIEBER TILLY 233U  
HXC CONQUEST 4405P  
LCHMN ELEANOR J1266

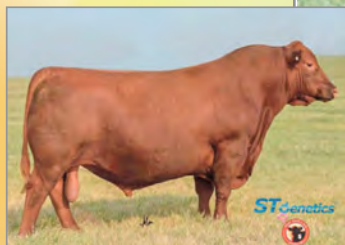


ProS	HB	GM	CED	BW	WW	YW	MILK	ME	HPG	CEM	STAY	MARB	CW	REA	FAT
90	26	64	13	-1.5	62	106	22	-3	11	6	10	0.5	34	-0.02	0.01
48%	92%	5%	36%	52%	38%	24%	74%	19%	55%	62%	96%	25%	10%	70%	41%

## Lot 44

**AAHR RACING ELEANOR 109J**  
This young cow stems back to a powerful brood cow, Eleanor J1266. Eleanors don't need much of an introduction – they are massive, big ribbed with plenty of dimension. We were fortunate to purchase Eleanor J1266 and she has left her mark in our herd. This nice young cow has a Draft Pick bull calf at side.

**Sells with bull calf born 9/12/23, AAHR Pick 338L (#4803506), sired by OVER Draft Pick 413D (#3548524).**



OVER DRAFT PICK 413D Sire of Lot 44 Calf



Chance



**LOT 45 – PZC POWER STORM 035 ET**  
 Exposed to C-BAR Collateral 203J (#4534315) 5/29/23-9/16/23.  
 Ultrasound confirmed due late March.

Lot **45** *From the herd of: Johnson Family Cattle*

## PZC POWER STORM 035 ET

Bred Cow Reg. # Calved Tattoo Cat % Breed BW WW  
 4522977 03-15-2021 35 PZCT A 100% AR 70 641

RED SIX MILE SAKIC 832S RED SIX MILE AVIATOR 217P  
**PZC TMAS FIRESTORM 1800 ET** RED SIX MILE SIERA 257P  
 GT CITA 4060 CITATION 138  
 JMDF MISS LANA

RED SOO LINE POWER EYE 161X RED COCKBURN RIBEYE 308U  
**DAMAR OH POWER BABY C150** RED TR LYNN 301R  
 DAMAR OH BABY W168 RED FINE LINE MULBERRY 26P  
 RED T-S OLIVIA 706P



ProS	HB	GM	CED	BW	WW	YW	MILK	ME	HPG	CEM	STAY	MARB	CW	REA	FAT
89	64	25	14	-1.6	61	100	27	-2	15	8	14	0.28	19	-0.25	-0.01
50%	39%	60%	27%	50%	43%	34%	39%	26%	9%	27%	76%	74%	53%	97%	4%

I have always admired the dam of this female, and when the opportunity to purchase a direct daughter came about, I jumped at the chance. Oh Power Baby is a beast of a cow with an abundance of bone, body and muscle. 035 is still young but has already matured into a good-looking female with that same foot size, capacity and muscling that made her dam famous.



**LOT 46 – JFCC PADO IVORY H011**  
 Exposed to C-BAR Collateral 203J (#4534315) 5/29/23-9/16/23.  
 Ultrasound confirmed due 3/22/24.

Lot **46** *From the herd of: Johnson Family Cattle*

## JFCC PADO IVORY H011

Bred Cow Reg. # Calved Tattoo Cat % Breed BW WW  
 4283825 02-28-2020 H011 PADO A 100% AR 87 597

GMRA TRILOGY 0226 MESSMER PACKER 3008  
**GMRA TRINITY 5222** GMRA LAKOTA 625  
 GMRA INDIGO 615 LCC CHEYENNE B221L  
 GMRA INDIGO 230

HXC CONQUEST 4405P BECKTON JULIAN GG B571  
**PADO LIZ E719** HXC ELLIE MAY MA638  
 PADO HILDA C527 HXC BIG IRON 0024X  
 RED ACRES MILLIE 7M



ProS	HB	GM	CED	BW	WW	YW	MILK	ME	HPG	CEM	STAY	MARB	CW	REA	FAT
89	31	58	11	-1.4	68	114	29	17	14	7	12	0.54	39	0.24	0.04
51%	89%	9%	64%	54%	17%	12%	24%	98%	19%	43%	87%	19%	4%	19%	92%

Dark cherry red and easy going. Here's a low maintenance calf raiser that just does her job without a lot of fuss. She knows her role and does it well. All she asks in return is fresh air and green grass, maybe a little mineral and some hay when it snows. Who says it's hard to find good employees these days? Females of Fall 2023 is full of hard workers that will show up year after year. No 401k required.



**LOT 47 – JFCC CHLOE 959**  
 Exposed to C-BAR Collateral 203J (#4534315) 5/29/23-9/16/23.  
 Ultrasound confirmed due 3/16/24.

Lot **47** *From the herd of: Johnson Family Cattle*

## JFCC CHLOE 959

Bred Cow Reg. # Calved Tattoo Cat % Breed BW WW  
 4071750 02-19-2019 959 JFCC A 100% AR 66 603

BECKTON NEBULA P P707 BECKTON NEBULA M045  
**BROWN JYJ REDEMPTION Y1334** BECKTON LANA M809 EP  
 JYJ MS JOLENE W16 LJC MISSION STATEMENT P27  
 HXC JOLENE R548

SSR FUEGO 6B TC HAMLEY 47X  
**JFCC CALIENTE 755** SSR FLYNN 08W  
 SLGN RACHEL 224Z RED LAZY MC COWBOY CUT 26U  
 LSF RACHEL G1365 LA403



ProS	HB	GM	CED	BW	WW	YW	MILK	ME	HPG	CEM	STAY	MARB	CW	REA	FAT
80	33	47	13	-1.7	60	104	23	5	12	7	12	0.36	34	-0.03	0
64%	87%	21%	34%	48%	45%	28%	66%	62%	42%	39%	90%	54%	11%	72%	9%

This line of cows has been very productive for us, and 959 is no exception. She's a good milking cow with good maternal instincts. This daughter of past breed leader Redemption offers a chance to get a young cow with a solid pedigree/EPDs, nice feet and a good udder. No razzle-dazzle, no smoke and mirrors, no funny business. Just good stock.

## Lot 48 JFCC DANCE 057

Rare opportunity! Here's one of the first daughters of the GENEX sire Enterprise, from our deceased donor, Huston Dance 2013Z. This cow is super easy fleshing, sports a nearly ideal udder, and moves like a cat. If you like cows with eye catching good looks and maternal strength, this cow has it in spades! That Jumpstart baby in her belly could make a few mortgage payments.

**AI bred 4/14/23 to Bieber Jumpstart J137 (#4463653). Due 1/21/24.**



JFCC DANCE 255 Maternal Sister to Lot 48



## Lot 48

From the herd of: Johnson Family Cattle

### JFCC DANCE 057

Bred Cow	Reg. #	Calved	Tattoo	Cat	% Breed	BW	WW
	4237932	03-08-2020	57 JFCC	A	100% AR	82	643

9 MILE FRANCHISE 6305  
**9 MILE ENTERPRISE 8180**  
 DYK RED BIRD 1944-5105

SPUR FRANCHISE OF GARTON  
 C-BAR ABIGRACE Y11  
 GMRA DEUCES 2222  
 5L BLACKBIRD 1322-1944

MUSHRUSH LOCK 'N' LOAD U213  
**HUSTON DANCE 2013Z**  
 SRN DANCE 1503

BUF CRK LANCER R017  
 MUSHRUSH PRIMROSE MM R213  
 HOLDEN HI HO 574  
 WPRA XXX JONQUIL 904



ProS	HB	GM	CED	BW	WW	YW	MILK	ME	HPG	CEM	STAY	MARB	CW	REA	FAT
120	68	52	12	-0.8	64	109	27	3	16	7	16	0.5	23	0.2	0.02
11%	32%	14%	53%	65%	29%	19%	38%	51%	7%	47%	58%	25%	39%	24%	63%

## Lot 49

From the herd of: Johnson Family Cattle

### JFCC PADO ASHLEY H001

Bred Cow	Reg. #	Calved	Tattoo	Cat	% Breed	BW	WW
	4283747	02-18-2020	H001 PADO	A	100% AR	62	582

LSF TAKEOVER 9943W  
**H2R PROFITBUILDER B403**  
 BROWN MS P707 Y6674

HXC CONQUEST 4405P  
 LSF WIDELoad R5014 U8061  
 BECKTON NEBULA P P707  
 BROWN MS MISSION STMT T6963

NBAR HAMLEY S913  
**PADO ARIEL B402**  
 PADO ALLY

PIE BILLINGS 487  
 NBAR KELLY 913  
 HXC CONQUEST 4405P  
 SHOESTRING KELBY 745



ProS	HB	GM	CED	BW	WW	YW	MILK	ME	HPG	CEM	STAY	MARB	CW	REA	FAT
96	50	46	15	-3.7	57	87	19	-3	11	9	13	0.59	19	-0.03	0.02
40%	65%	22%	18%	17%	56%	65%	90%	20%	59%	10%	86%	13%	54%	72%	56%

## Lot 49

### JFCC PADO ASHLEY H001

Heads up, back to the sale here! Here's a good looking, big-middled female with good feet and a tidy udder! An actual comment from the picture pen, "Why didn't we break her to lead? She'd have made a great show heifer." What's done is done, but her Collateral baby should be pretty cool. Then start thinking of all the different bulls you could use on her. Maybe even a bull of another breed. I don't know, is that ok to say in the footnotes of a Red Angus sale?

**Exposed to C-BAR Collateral 203J (#4534315) 5/29/23-9/16/23.**



C-BAR COLLATERAL 203J Service Sire of Lot 49





*Call Today!*  
608-897-2121



**BANK OF  
BRODHEAD**

**Brodhead Office:**  
608-897-2121  
806 East Exchange Street  
Brodhead, WI 53520

**Orfordville Office:**  
608-879-2911  
303 East Spring Street  
Orfordville, WI 53576

- Farm Construction loans
- Farmer Mac loans
- FSA Loans
- Farm Operating loans
- Farm Livestock purchases
- Machinery & Equipment purchases

Bank of Brodhead Ag Lending experience is based on  
**Generations of farm kids**

[www.bankofbrodhead.com](http://www.bankofbrodhead.com)



Paige Blair  
608-897-6044



Adam Sommer  
608-897-5226



Craig O'Leary  
608-879-2911



Michael J Olson  
608-897-2121



Glenn Marass  
608-897-2121



**262-882-3466**

- David Chapman, DVM
- Dan Gander, DVM
- Larry Hargarten, DVM
- John Kornmann, DVM
- Jake Kuenster, DVM
- Kailey Ann McPhail, DVM

- Sabina Ponicki, DVM
- Joe Severson, DVM
- Dagmara Schroeder, DVM
- Tom Strause, DVM
- Austin Wenck, DVM

*Complete Bovine care including IVF, ET and Donor Housing*



**BRODHEAD VETERINARY**

**MEDICAL CENTER LLC**



**Large Animal Doctors:**

- Dr. Chris Duemler
- Dr. David Jeans
- Dr. Jason Mertens
- Dr. Ethan Andre
- Dr. Rachel O'Leary
- Dr. Marisa Klister
- Dr. Beth Weber

**Small Animal Doctors:**

- Dr. Emily Dahlgran
- Dr. Shawn Melvin
- Dr. Debbie Thayer
- Dr. Lauren Bunting
- Dr. Andrea McGowan
- Dr. Alex Miller

**Mixed Animal  
Doctors:**

- Dr. Emily Hill
- Dr. Jordynne Walker



**Brodhead Location:**

W1175 State Rd. 11 and 81  
Brodhead, WI 53520

**Monroe Location**

1317 31st Ave.  
Monroe, WI 53566

[www.brodheadvets.com](http://www.brodheadvets.com) | 608-897-8632 | [clinic@brodheadvets.com](mailto:clinic@brodheadvets.com)

She is the foundation of your program.  
Now give her the foundation she needs.  
Great nutrition.

TARGETED NUTRITION  
**Blueprint**

Available at  **MIDDLETON FARMERS COOPERATIVE**  
Est. 1928  
Hardware • Feed • Convenience Stores  
Agronomy • Shop • Petroleum  
[www.MiddletonCoop.com](http://www.MiddletonCoop.com)  
(608) 831-5921

Conveniently located off of the  
US Hwy 12/18 and Hwy 14, on  
Pleasant View Road.

 **HUBBARD**  
an **Altech** company

## MURRAY'S Dairy, Farm & Refrigeration, Inc.

463 N Washington Street • Lancaster, Wisconsin • 53813

608.723.5665 888.723.5665



**ARROWQUIP**

 **For-Most**  
Livestock Equipment

**POWDER RIVER**  
LIVESTOCK HANDLING EQUIPMENT

**HERDPRO** 8&8  
MEETING YOUR AGRICULTURAL NEEDS

**TITAN WEST INC**  
Livestock Handling Equipment

RENTAL EQUIPMENT AVAILABLE  
TRADE-INS WELCOME

[www.murraysdfr.com](http://www.murraysdfr.com)

*Thank you for attending the  
Females of Fall  
Red Angus Sale!*

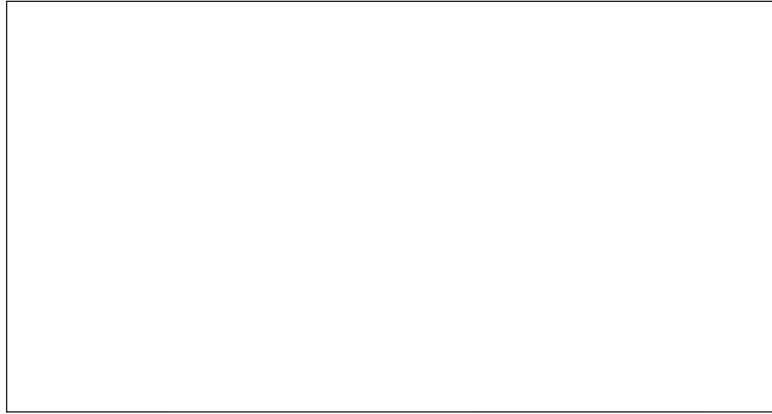


*We appreciate your  
support and confidence  
in our programs.*



**SHAMROCK NOOK**  
*Red Angus*  
 W646 Hwy. 59 • Albany, WI 53502

Presorted  
 First-Class Mail  
 US Postage  
**PAID**  
 LivestockDirect



# Females of Fall

**Red Angus Sale**

**Saturday, November 11, 2023**

**Albany, Wisconsin**

**— Featured Lots —**



*Lot 1 – SRN Suzy 2317*



*Lot 4 – JFCC Cassidy 359*



*Lot 5 – AAHR Grand Lakota 302L*



*Lot 11 – SRN Susie 2261*



*Lot 16 – JFCC Patricia Rose 251*



*Lot 19 – AAHR Abigrace 208K*



*Lot 36 – SRN Ester 2269*



*Lot 48 – JFCC Dance 057*