

**HENKE
FARMS**

Annual Bull Sale
MARCH 14, 2024

AT THE FARM EAST OF SALISBURY, MO
ON HIGHWAY 24

6 PM

HENKE
ANGUS FARMS
660 676 6233
2227

Selling

**100 YEARLING & 18-MONTH OLD
ANGUS BULLS & 15 OPEN HEIFERS**

DVAuction
Broadcasting Real-Time Auctions



CHARLES AND ROBYN HENKE

Colin, Byron, Bennett, Gabrielle

31191 Hwy NN - Salisbury, MD 65281

Cell: 660-676-6233

henkeangus@gmail.com



RON AND DEBBY HENKE

Cell: 660-651-4238

SALE MANAGED BY



WES TIEMANN

816-244-4462

mrtiemann@outlook.com

FELLOW CATTLEMEN –

What an exciting time to be in the cattle business, with calf prices reaching all time highs and looking to go higher. The national cowherd is continuing to decline. It sure looks like we could sustain this market for at least 3-5 years. For those of us that weathered the storm and stayed in, our hard work will be rewarded. Now is the time to upgrade genetics. The calves that bulls are siring this spring will likely be the highest price any one of us has ever sold.

On the family front, not much has changed. We still stay busy with Colin and Byron playing football, basketball, and baseball. Bennett keeps us on our toes with his charming with and jokes. He is starting to play multiple sports. Gabby Jo loves to entertain and all four kids are always up for a ride in the Gator or four wheeler to check cows.

Thanks to my wife Robyn for all her help on the farm, as well as my parents for the day to day help. A thankful shout out to Kyle Hinkle for working and feeding cattle seven days a week and also to Brent Farnen for helping out.

To our past, current, and future customers we say thanks for allowing me to do what I love for a living. The cattle industry truly has the best people. If you have questions please give me a call or stop by the farm. We look forward to seeing you March 14th at 6:00 pm at the farm.

Sincerely, Charles Henke



DVAuction
Broadcasting Real-Time Auctions

WATCH AND BID LIVE ONLINE

The sale will be broadcast live on DVAuction.com.

Please register to bid at least 24 hours in advance of the sale.

THURSDAY - 6 PM
MARCH 14, 2024

LIVE ON **DVAuction**
Broadcasting Real-Time Auctions

HENKE FARMS

AT THE FARM NEAR
SALISBURY, MO
ON HIGHWAY 24

SALE LOCATION

HENKE ANGUS FARMS

27955 Woodson Ave / Salisbury, MO 65281
One mile East of Salisbury on the North side of Hwy 24.

SALE CONTACTS

Charles Henke.....660-676-6233
Ron Henke.....660-651-4238

AUCTIONEER

Wes Tiemann.....816-244-4462

Cattle will sell live in the ring.

REPRESENTATIVES

Adam Conover, American Angus Association...816-676-8560
Austin Brandt, Livestock Plus Inc.....712-621-1829
Julie Conover, Missouri Angus Association...734-260-8635
Bruce Bradley, Special Assignment.....417-848-3457

DELIVERY

Free delivery on any purchases of \$5,000 or more in a 150 mile radius. Deliveries will be made by April 1st.

GUARANTEE

First breeding season guarantee will convey with each purchase. A season is defined as the first 90 days the bull is first turned out. Replacements will be granted if available or credit will be given minus salvage value of \$2,000 if a bull proves to not be a satisfactory breeder. Notify us as soon as possible and before salvaging your bull. This is not mortality insurance and does not guarantee against neglect. Your purchase is a major investment in your cowherd, mortality insurance will be available sale day.

Supper available at 5:00 pm!

TERMS AND CONDITIONS

Henke Farms assume no liability in case of an accident and cattle will sell under terms and conditions offered by the American Angus Association.

TRUCKING AND BOARDING

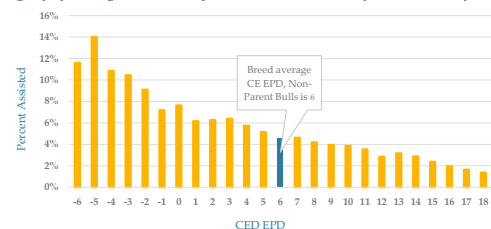
Bulls picked up sale day receive \$50 off. Free boarding until April 1, 2024. A 5\$/day fee will be charged after April 1st due to rising feed cost and more importantly the increased risk of incident to your bull. When spring rolls around a big pen of bulls ready to work is recipe for injury. Thank you for understanding.

INCIDENCE OF CALVING DIFFICULTY

While we understand the need for heifer bulls (our recommendation is 7 CED and around 2 or lower on BW) we also think that the Calving Ease Direct EPD may be misunderstood. This graph shows that from an 18 CED Sire compared to an 0 CED Sire there is only a 6% increase of assisted births in first calf heifers. The bottom line is CED EPD is for bulls going on heifers, selecting high CED bulls for cow's could generate undesirably low birthweights and conversely make smaller pelvic areas in their progeny.

Angus is a Leading Breed for Calving Ease

Progeny of 20 highest accuracy sires born since 1995 for each unit of CE EPD



The incidence of calving difficulty in Angus cattle is very low. While these data reflect some corrective matings, a very high percentage of calves born to Angus heifers, sired by Angus bulls with breed average or greater CE EPDs, are born unassisted.

ANGUS
THE BUSINESS BREED



man in black sons



7 Henke Man in Black 2167 ET **ANGUS^{GS}**
Bull | REG: 20446324 | TAG: 2167 | DOB: 8/30/22 **FALL BULL**

Bar R Jet Black 5063#
LAR Man In Black
 JMB Maxine TG 2131#
 Vintage Legacy 4409
GVC Susanna D313
 Pine View Susanna A083

Connealy Black Granite#
 Bar R Iris Anita 0113
 Sitz Top Game 561X#
 JMB Maxine Deluxe 9034#
 V A R Generation 2100#
 Riverbend Blackcap W944
 Poss Total Impact 745#
 SH Objective 9001

ADJ % IMF (Ratio)	3.69 (131)
ADJ RE (Ratio)	14.9 (106)
ADJ RIB (Ratio)	0.22 (122)

CED	BW	WW	YW	YH	SC	DOC	HP	MILK	ACT BW								
13	1.7	91	164	1.2	0.68	32	13.3	27	75								
10%	65%	2%	2%	3%	65%	3%	40%	45%	ADJ WW (Ratio)								
CW	MARB	RE	FAT	\$M	\$B	\$C	ADJ YW (Ratio)										
90	1.23	1.07	0.037	71	217	352	1297 (111)										
1%	10%	10%	80%	30%	2%	1%											
CED	BW	WW	YW	DMI	YH	SC	DOC	HP	CEM	MLK	MW	MH	CW	MARB	RE	FAT	TEND
29	77	8	2	99	11	66	1	19	86	50	6	7	2	10	7	64	61

Donor Dam has 4 WW@103
#1 DOC EPD BULL IN THE SALE!



Dam of Lots 1, 2, 3, 12 • GVC Susanna D313

D313 is a super classic Angus cow with a great udder, feet and structure. The Susanna's are a major influencer on the top end of our herd.

a complete bull with no holes!

Top 1% CW, \$C • Top 2% WW, YW, \$B • Top 3% DOC • Top 5% CLAW, RE



Great Body Capacity
and Dense Muscle!

LOT
2

2 Henke Man in Black 2203 ET **ANGUS^{GS}**
Bull | REG: 20446325 | TAG: 2203 | DOB: 9/3/22 **FALL BULL**

Bar R Jet Black 5063#
LAR Man In Black
JMB Maxine TG 2131#

Vintage Legacy 4409
GVC Susanna D313
Pine View Susanna A083

Connealy Black Granite#
Bar R Iris Anita 0113
Sitz Top Game 561X#
JMB Maxine Deluxe 9034#
V A R Generation 2100#
Riverbend Blackcap W944
Poss Total Impact 745#
SH Objective 9001

ADJ % IMF (Ratio)
3.12 (111)
ADJ RE (Ratio)
14.5 (103)
ADJ RIB (Ratio)
0.24 (133)

CED	BW	WW	YW	YH	SC	DOC	HP	MILK	ACT BW								
12	0.6	75	139	1	1.36	24	11.1	36	76								
10%	35%	20%	15%	10%	20%	25%	65%	5%	ADJ WW (Ratio)								
									751 (93)								
									ADJ YW (Ratio)								
									1154 (98)								
CW	MARB	RE	FAT	\$M	\$B	\$C											
65	1.25	0.78	0.056	61	189	306											
20%	10%	30%	95%	60%	10%	10%											
CED	BW	WW	YW	DMI	YH	SC	DOC	HP	CEM	MLK	MW	MH	CW	MARB	RE	FAT	TEND
34	61	33	10	86	20	30	8	41	92	10	30	11	17	6	36	90	1

Donor Dam has 4 WW@103

3 Henke Man in Black 2245 ET **ANGUS^{GS}**
Bull | REG: 20446323 | TAG: 2245 | DOB: 9/8/22 **FALL BULL**

Bar R Jet Black 5063#
LAR Man In Black
JMB Maxine TG 2131#

Vintage Legacy 4409
GVC Susanna D313
Pine View Susanna A083

Connealy Black Granite#
Bar R Iris Anita 0113
Sitz Top Game 561X#
JMB Maxine Deluxe 9034#
V A R Generation 2100#
Riverbend Blackcap W944
Poss Total Impact 745#
SH Objective 9001

ADJ % IMF (Ratio)
6.04 (214)
ADJ RE (Ratio)
13.4 (95)
ADJ RIB (Ratio)
0.28 (156)

CED	BW	WW	YW	YH	SC	DOC	HP	MILK	ACT BW								
8	2.6	84	140	0.7	0.82	22	13.9	29	79								
35%	80%	10%	15%	30%	55%	35%	35%	30%	ADJ WW (Ratio)								
									797 (98)								
									ADJ YW (Ratio)								
									1165 (99)								
CW	MARB	RE	FAT	\$M	\$B	\$C											
67	1.47	0.72	0.06	74	197	330											
15%	3%	40%	95%	25%	10%	4%											
CED	BW	WW	YW	DMI	YH	SC	DOC	HP	CEM	MLK	MW	MH	CW	MARB	RE	FAT	TEND
87	96	18	24	73	60	58	19	18	69	39	25	28	19	5	47	86	31

Donor Dam has 4 WW@103



214 IMF RATIO!

LOT
3



4 Henke Man in Black 2111 **ANGUS^{GS}**
Bull | REG: 20457483 | TAG: 2111 | DOB: 8/20/22 **FALL BULL**

Bar R Jet Black 5063#
LAR Man In Black
 JMB Maxine TG 2131#
 Tehama Patriarch F028
HF Duchess 0197
 HF Duchess 2014

Connealy Black Granite#
 Bar R Iris Anita 0113
 Sitz Top Game 561X#
 JMB Maxine Deluxe 9034#
 S S Niagara Z29#
 Tehama Elite Blackbird D826
 TC Total 410#
 SydGen Duchess 7494

ADJ % IMF (Ratio) **2.66 (109)**
 ADJ RE (Ratio) **14.4 (101)**
 ADJ RIB (Ratio) **0.19 (95)**

CED	BW	WW	YW	YH	SC	DOC	HP	MILK	ACT BW
8	1.8	87	151	0.7	1.78	19	14.8	27	77
35%	65%	4%	5%	30%	10%	50%	25%	45%	ADJ WW (Ratio)
									875 (110)
CW	MARB	RE	FAT	SM	SB	SC	ADJ YW (Ratio)		
77	1.37	0.89	0.021	70	207	338	1305 (109)		
5%	5%	20%	65%	35%	3%	3%			

CED	BW	WW	YW	DMI	YH	SC	DOC	HP	CEM	MLK	MW	MH	CW	MARB	RE	FAT	TEND
48	66	16	14	88	42	10	10	20	26	42	15	21	6	3	16	31	12

Masculine bull with a big hip.



5 Henke Man in Black 2115 **ANGUS^{GS}**
Bull | REG: 20446350 | TAG: 2115 | DOB: 8/21/22 **FALL BULL**

Bar R Jet Black 5063#
LAR Man In Black
 JMB Maxine TG 2131#
 Deer Valley Growth Fund
HF Barbara 0168
 HF Barbara 7148

Connealy Black Granite#
 Bar R Iris Anita 0113
 Sitz Top Game 561X#
 JMB Maxine Deluxe 9034#
 Basin Payweight 1682#
 Deer Valley Rita 36113
 LD Capitalist 316#
 HF Barbara 5148

ADJ % IMF (Ratio) **2.05 (84)**
 ADJ RE (Ratio) **14.1 (99)**
 ADJ RIB (Ratio) **0.15 (75)**

CED	BW	WW	YW	YH	SC	DOC	HP	MILK	ACT BW
6	4.4	94	164	1	1.54	19	11.4	25	83
55%	95%	1%	2%	10%	15%	50%	60%	60%	ADJ WW (Ratio)
									836 (105)
CW	MARB	RE	FAT	SM	SB	SC	ADJ YW (Ratio)		
81	0.79	0.71	0.057	52	184	291	1246 (104)		
3%	40%	40%	95%	85%	15%	20%			

CED	BW	WW	YW	DMI	YH	SC	DOC	HP	CEM	MLK	MW	MH	CW	MARB	RE	FAT	TEND
50	93	4	3	89	11	21	36	35	48	52	3	6	4	24	45	88	14

Dam is a flush sister to Barbara 0169, our leading donor in partners with De-Su.



6 Henke Man in Black 2160 **ANGUS^{GS}**
Bull | REG: 20457474 | TAG: 2160 | DOB: 8/29/22 **FALL BULL**

Bar R Jet Black 5063#
LAR Man In Black
 JMB Maxine TG 2131#
 ECO Lombardi 1512
CA Lady Prophet 570
 G A R Prophet A222

Connealy Black Granite#
 Bar R Iris Anita 0113
 Sitz Top Game 561X#
 JMB Maxine Deluxe 9034#
 V A R Discovery 2240#
 RB Lady 7125-890-2170
 G A R Prophet#
 G A R Predestined A9027

ADJ % IMF (Ratio) **4.82 (198)**
 ADJ RE (Ratio) **13.4 (94)**
 ADJ RIB (Ratio) **0.3 (150)**

CED	BW	WW	YW	YH	SC	DOC	HP	MILK	ACT BW
5	2.5	88	144	0.8	1.39	14	12.3	20	86
60%	80%	3%	10%	25%	20%	75%	50%	90%	ADJ WW (Ratio)
									719 (91)
CW	MARB	RE	FAT	SM	SB	SC	ADJ YW (Ratio)		
67	1.4	0.66	0.071	70	192	319	1170 (99)		
15%	5%	50%	95%	35%	10%	10%			

CED	BW	WW	YW	DMI	YH	SC	DOC	HP	CEM	MLK	MW	MH	CW	MARB	RE	FAT	TEND
60	67	13	36	86	37	18	61	18	74	90	40	53	22	4	48	90	72

#1 MB EPD bull in the sale.

7 Henke Colin Man n Black 2231 **ANGUS^{GS}**
Bull | REG: 20467286 | TAG: 2231 | DOB: 9/5/22 **FALL BULL**

Bar R Jet Black 5063#
LAR Man In Black
 JMB Maxine TG 2131#
 Deer Valley Growth Fund
HF Blackcap 9234
 Pitts Blackcap 6103

Connealy Black Granite#
 Bar R Iris Anita 0113
 Sitz Top Game 561X#
 JMB Maxine Deluxe 9034#
 Basin Payweight 1682#
 Deer Valley Rita 36113
 Connealy Black Granite#
 Pitts Blackcap 1167

CED	BW	WW	YW	YH	SC	DOC	HP	MILK	ACT BW
14	0.3	87	158	0.8	1.03	26	9.6	36	79
4%	30%	4%	2%	25%	40%	20%	80%	5%	ADJ WW (Ratio)
									835 (105)
CW	MARB	RE	FAT	\$M	\$B	\$C	ADJ YW (Ratio)		
73	0.58	0.68	0.076	72	164	285	1261 (106)		
10%	60%	45%	95%	30%	25%	20%			

CED	BW	WW	YW	DMI	YH	SC	DOC	HP	CEM	MLK	MW	MH	CW	MARB	RE	FAT	TEND
5	26	15	9	84	47	52	7	66	36	13	51	65	23	43	78	100	12

Dam has 2 WW@104 and 2 YW@101.



8 Henke Man in Black 2238 **ANGUS^{GS}**
Bull | REG: 20446329 | TAG: 2238 | DOB: 9/6/22 **FALL BULL**

Bar R Jet Black 5063#
LAR Man In Black
 JMB Maxine TG 2131#
 Mill Brae Identified 4031#
Pine View Rita E004
 Pine View Rita B043

Connealy Black Granite#
 Bar R Iris Anita 0113
 Sitz Top Game 561X#
 JMB Maxine Deluxe 9034#
 Koupals B&B Identity#
 Mill Brae Pro Blackcap 1092
 PA Prowess 202
 Pine View Rita Z004

CED	BW	WW	YW	YH	SC	DOC	HP	MILK	ACT BW
4	3.4	80	148	0.7	0.66	26	11.7	27	82
70%	90%	10%	10%	30%	65%	20%	60%	45%	ADJ WW (Ratio)
									769 (97)
CW	MARB	RE	FAT	\$M	\$B	\$C	ADJ YW (Ratio)		
69	1.35	1.03	0.013	66	205	332	1204 (101)		
15%	10%	10%	50%	45%	4%	3%			

CED	BW	WW	YW	DMI	YH	SC	DOC	HP	CEM	MLK	MW	MH	CW	MARB	RE	FAT	TEND
70	83	20	5	92	43	66	5	55	69	70	13	19	15	7	10	30	16

Top 10% Claw EPD, natural calf out of our E004 Donor. Maternal brothers sell as 79 and 80.



9 Henke Man in Black 2204 **ANGUS^{GS}**
Bull | REG: 20467283 | TAG: 2204 | DOB: 9/3/22 **FALL BULL**

Bar R Jet Black 5063#
LAR Man In Black
 JMB Maxine TG 2131#
 Prairie Pride Next Step 2036#
HF Annie 9205
 Turner Image Maker 85#

Connealy Black Granite#
 Bar R Iris Anita 0113
 Sitz Top Game 561X#
 JMB Maxine Deluxe 9034#
 SydGen 928 Destination 5420#
 Flying V Miss Pride 426
 H A Image Maker 0415#
 Turner K856 9124

CED	BW	WW	YW	YH	SC	DOC	HP	MILK	ACT BW
7	2.3	82	144	0.7	1.23	19	17.2	27	83
45%	75%	10%	10%	30%	30%	50%	10%	45%	ADJ WW (Ratio)
									825 (104)
CW	MARB	RE	FAT	\$M	\$B	\$C	ADJ YW (Ratio)		
68	0.36	0.74	0.035	65	143	250	1217 (102)		
15%	85%	40%	80%	50%	50%	50%			

CED	BW	WW	YW	DMI	YH	SC	DOC	HP	CEM	MLK	MW	MH	CW	MARB	RE	FAT	TEND
42	62	12	8	97	17	28	30	7	100	51	8	18	8	68	20	60	92

Dam reports 2 calves in a 342-day calving interval. She is a daughter of the most prolific producer in our herd.



Donor Dam of Lot 8
 Pine View Rita E004



Maternal Brother to
 Lot 8
Henke Rawhide 1161
 sold to Ryan German in 2023

10 Henke Man in Black 2248 **ANGUS^{GS}**
FALL BULL

Bull | REG: 20449061 | TAG: 2248 | DOB: 9/8/22
 Bar R Jet Black 5063#
LAR Man In Black
 JMB Maxine TG 2131#
 Werner War Party 2417#
HF Robyn 4146
 HF Robyn 1157

CED	BW	WW	YW	YH	SC	DOC	HP	MILK	ACT BW								
1	4.3	86	144	0.9	2.07	19	8.9	27	93								
90%	95%	5%	10%	15%	2%	50%	85%	45%	ADJ WW (Ratio)								
									833 (105)								
CW	MARB	RE	FAT	\$M	\$B	SC	ADJ YW (Ratio)										
67	0.4	0.91	0.023	62	145	250	1177 (99)										
15%	80%	20%	65%	55%	50%	50%											
CED	BW	WW	YW	DMI	YH	SC	DOC	HP	CEM	MLK	MW	MH	CW	MARB	RE	FAT	TEND
77	91	8	15	90	21	7	23	58	62	41	16	6	13	65	13	58	53

Dam has 7 WW@101 and 6 YW@106. She reports 7 calves in a 365-day calving interval. Top 15% Claw EPD.



Donor Dam of Lot 12
GVC Susanna D313



Donor Dam of Lot 13
HF Barbara 0169



LOT
13

11 Henke BH Man in Black 2261 **ANGUS^{GS}**
FALL BULL

Bull | REG: 20449053 | TAG: 2261 | DOB: 9/11/22
 Bar R Jet Black 5063#
LAR Man In Black
 JMB Maxine TG 2131#
 V A R Signal 7244
HF Byron's Royal Queen 0134
 HF Royal Queen 8161

CED	BW	WW	YW	YH	SC	DOC	HP	MILK	ACT BW								
6	4	95	166	0.9	0.8	28	15.9	29	78								
55%	95%	1%	1%	15%	55%	10%	15%	30%	ADJ WW (Ratio)								
									799 (101)								
CW	MARB	RE	FAT	\$M	\$B	SC	ADJ YW (Ratio)										
85	0.84	1.14	0.038	77	198	334	1268 (107)										
2%	35%	3%	85%	20%	10%	3%											
CED	BW	WW	YW	DMI	YH	SC	DOC	HP	CEM	MLK	MW	MH	CW	MARB	RE	FAT	TEND
76	90	5	4	95	22	74	3	7	24	48	6	6	4	25	3	46	34

Top 20% Claw EPD. One of Byron's best bulls yet.

12 Henke Man in Black 2300 **ANGUS^{GS}**
FALL BULL

Bull | REG: 20467287 | TAG: 2300 | DOB: 9/30/22
 Bar R Jet Black 5063#
LAR Man In Black
 JMB Maxine TG 2131#
 Vintage Legacy 4409
GVC Susanna D313
 Pine View Susanna A083

CED	BW	WW	YW	YH	SC	DOC	HP	MILK	ACT BW								
6	3.1	87	146	0.7	1.09	26	18.1	11	83								
55%	90%	4%	10%	30%	35%	20%	4%	95%	ADJ WW (Ratio)								
									758 (99)								
CW	MARB	RE	FAT	\$M	\$B	SC	ADJ YW (Ratio)										
78	0.81	0.85	0.039	63	184	302	1038 (92)										
4%	35%	25%	85%	55%	15%	15%											
CED	BW	WW	YW	DMI	YH	SC	DOC	HP	CEM	MLK	MW	MH	CW	MARB	RE	FAT	TEND
74	90	5	10	98	25	38	9	3	89	99	4	7	3	33	22	75	17

Flush brother to lots 1-3.

13 Henke Man in Black 3061 ET **ANGUS^{GS}**

Bull | REG: 20700484 | TAG: 3061 | DOB: 2/1/23
 Bar R Jet Black 5063#
LAR Man In Black
 JMB Maxine TG 2131#
 Deer Valley Growth Fund
HF Barbara 0169
 HF Barbara 7148

CED	BW	WW	YW	YH	SC	DOC	HP	MILK	ACT BW								
1	5.6	114	194	1	1.61	21	14.3	31	90								
90%	95%	1%	1%	10%	10%	40%	30%	20%	ADJ WW (Ratio)								
									800 (106)								
CW	MARB	RE	FAT	\$M	\$B	SC	ADJ YW (Ratio)										
106	0.79	1.02	0.042	81	206	348	1390 (102)										
1%	40%	10%	85%	10%	4%	2%											
CED	BW	WW	YW	DMI	YH	SC	DOC	HP	CEM	MLK	MW	MH	CW	MARB	RE	FAT	TEND
77	98	1	1	100	9	4	28	17	26	33	3	3	1	26	14	73	25

Donor dam is a prolific producer and injects massive growth and power in each calf. Her impact will be large on our herd. She is owned in partnership with De-Su Angus in Iowa. This bull is unmatched for his levels of growth, \$M and \$B.

The Only Bull in the Breed with his WW, YW, \$M levels AND #1 WW & YW EPD in the sale!



Top 1% WW, YW EPD!

LOT
14

74 Henke Man in Black 3009 ANGUS^{GS}

Bull | REG: 20700470 | TAG: 3009 | DOB: 1/21/23
 Bar R Jet Black 5063#
LAR Man In Black
 JMB Maxine TG 2131#
 Deer Valley Growth Fund
Henke Rose 1016
 HF Rose 7034#

Connealy Black Granite#
 Bar R Iris Anita 0113
 Sitz Top Game 561X#
 JMB Maxine Deluxe 9034#
 Basin Payweight 1682#
 Deer Valley Rita 36113
 V A R Discovery 2240#
 HF Rose 5002

ADJ % IMF (Ratio)
3.92 (113)
ADJ RE (Ratio)
15.1 (100)
ADJ RIB (Ratio)
0.39 (108)

CED	BW	WW	YW	YH	SC	DOC	HP	MILK	ACT BW
1	4.6	95	174	1.1	1.11	18	9.3	27	81
90%	95%	1%	1%	5%	35%	55%	85%	45%	ADJ WW (Ratio)
768									768 (105)
93	0.93	0.84	0.07	55	201	316			ADJ YW (Ratio)
1%	25%	25%	95%	75%	5%	10%			1309 (104)

CED	BW	WW	YW	DMI	YH	SC	DOC	HP	CEM	MLK	MW	MH	CW	MARB	RE	FAT	TEND
84	89	5	2	100	22	41	14	64	14	50	6	8	8	16	42	93	30

Incredible growth bull with a good look.

75 Henke Man in Black 3078 ANGUS^{GS}

Bull | REG: 20700488 | TAG: 3078 | DOB: 2/3/23
 Bar R Jet Black 5063#
LAR Man In Black
 JMB Maxine TG 2131#
 GDAR Leupold 298#
HF Robyn 7201
 HF Robyn 3180

Connealy Black Granite#
 Bar R Iris Anita 0113
 Sitz Top Game 561X#
 JMB Maxine Deluxe 9034#
 A A R Leupold 0578#
 GDAR Miss Blackcap 9232
 SydGen Turbo 1549
 HF Robyn 1157

ADJ % IMF (Ratio)
2.87 (83)
ADJ RE (Ratio)
14.6 (97)
ADJ RIB (Ratio)
0.42 (117)

CED	BW	WW	YW	YH	SC	DOC	HP	MILK	ACT BW
8	2.4	95	157	1.1	1.26	31	12.7	26	88
35%	75%	1%	3%	5%	25%	4%	45%	55%	ADJ WW (Ratio)
770									770 (105)
79	0.69	0.66	0.089	71	172	294			ADJ YW (Ratio)
4%	50%	50%	95%	30%	20%	15%			1328 (105)

CED	BW	WW	YW	DMI	YH	SC	DOC	HP	CEM	MLK	MW	MH	CW	MARB	RE	FAT	TEND
37	65	3	14	73	8	22	3	24	56	37	5	5	3	39	36	97	70

A foot improver. Dam has 3 WW@105 and 2 YW@110.



Dam has an incredible udder

Lowest CLAW EPD in the sale!

LOT
15

man in black sons



LOT
16

16 Henke Man in Black 3079 **ANGUSGS**

Bull | REG: 20700489 | TAG: 3079 | DOB: 2/4/23

Bar R Jet Black 5063#
LAR Man In Black
JMB Maxine TG 2131#

Connealy Armory#
HF Dancraig 8071#
HF Dancraig 9080#

Connealy Black Granite#
Bar R Iris Anita 0113
Sitz Top Game 561X#
JMB Maxine Deluxe 9034#
Connealy Arsenal 2174#
Ebba of Conanga 808#
HF Destination 7055
Henkes Miss Design 034

ADJ % IMF (Ratio)	3.69 (107)
ADJ RE (Ratio)	14.1 (93)
ADJ RIB (Ratio)	0.42 (117)

CED	BW	WW	YW	YH	SC	DOC	HP	MILK	ACT BW
0	3.8	88	154	1.4	0.77	21	13.7	26	100
90%	95%	3%	3%	1%	60%	40%	35%	55%	ADJ WW (Ratio)
63	0.62	0.49	0.029	50	150	245			838 (115)
20%	55%	75%	75%	85%	40%	55%			ADJ YW (Ratio)
									1302 (103)

CED	BW	WW	YW	DMI	YH	SC	DOC	HP	CEM	MLK	MW	MH	CW	MARB	RE	FAT	TEND
72	72	24	12	61	21	61	10	18	84	59	9	7	34	54	55	46	71

Dam has 4WW@110 and 3 YW@103. Two generations of Pathfinder dams.



Reference Sire • LAR Man in Black



Maternal Brother to Lot 16 • Henke Jet Black 1064
sold to Brian Francis in 2022

17 Henke Man in Black 3080 **ANGUSGS**

Bull | REG: 20700490 | TAG: 3080 | DOB: 2/4/23

Bar R Jet Black 5063#
LAR Man In Black
JMB Maxine TG 2131#

Tehama Patriarch F028
HF Annie 0041
HF Annie 7013

Connealy Black Granite#
Bar R Iris Anita 0113
Sitz Top Game 561X#
JMB Maxine Deluxe 9034#
S S Niagara Z29#
Tehama Elite Blackbird D826
K C F Bennett Fortress#
Turner Image Maker 85#

ADJ % IMF (Ratio)	3.56 (103)
ADJ RE (Ratio)	16.9 (112)
ADJ RIB (Ratio)	0.45 (125)

CED	BW	WW	YW	YH	SC	DOC	HP	MILK	ACT BW
12	1.2	86	148	1	1.02	7	17.6	32	72
10%	50%	5%	10%	10%	40%	95%	5%	15%	ADJ WW (Ratio)
73	0.74	1.02	0.016	80	177	310			777 (106)
10%	45%	10%	55%	15%	15%	10%			ADJ YW (Ratio)
									1289 (102)

CED	BW	WW	YW	DMI	YH	SC	DOC	HP	CEM	MLK	MW	MH	CW	MARB	RE	FAT	TEND
32	58	11	9	93	11	43	88	2	64	21	24	18	7	48	8	59	19

Dam has 2 BW@99 and 2 WW@106. The third largest adj rib eye bull in the sale.

18 Henke Man in Black 3040 **ANGUSGS**

Bull | REG: 20700476 | TAG: 3040 | DOB: 1/28/23

Bar R Jet Black 5063#
LAR Man In Black
JMB Maxine TG 2131#

Connealy Power Surge 3115#
HF Rose 8050
HF Rose 5002

Connealy Black Granite#
Bar R Iris Anita 0113
Sitz Top Game 561X#
JMB Maxine Deluxe 9034#
PA Power Tool 9108#
Basha of Conanga 1475
SydGen Liberty GA 8627#
SydGen Rose 3205

ADJ % IMF (Ratio)	3.36 (97)
ADJ RE (Ratio)	15.6 (103)
ADJ RIB (Ratio)	0.36 (100)

CED	BW	WW	YW	YH	SC	DOC	HP	MILK	ACT BW
11	1.1	80	147	0.8	1.69	24	10.7	31	70
15%	50%	10%	10%	25%	10%	25%	70%	20%	ADJ WW (Ratio)
66	0.92	0.57	0.063	54	169	273			710 (97)
15%	25%	65%	95%	80%	20%	30%			ADJ YW (Ratio)
									1224 (97)

CED	BW	WW	YW	DMI	YH	SC	DOC	HP	CEM	MLK	MW	MH	CW	MARB	RE	FAT	TEND
25	53	13	6	90	26	6	15	48	84	16	14	25	15	16	68	98	33

Dam has 4 BW@93, 4 WW@100, and 3 YW@100.



19 Henke Thedford 2103 **ANGUS^{GS}**
Bull | REG: 20457492 | TAG: 2103 | DOB: 8/18/22 **FALL BULL**

Bar R Jet Black 5063#
Hoffman Thedford
 HA Rito Lady 3839#
 Bigk/WSC Iron Horse 025F
WSC Blackcap H884
 Montana Blackcap 7116

Connealy Black Granite#
 Bar R Iris Anita 0113
 KG Solution 0018#
 HA Rito Lady 0622
 EXAR Stallion 7986
 EXAR Henrietta Pride 5702
 Baldridge Colonel C251#
 Montana Blackcap C088

CED	BW	WW	YW	YH	SC	DOC	HP	MILK	ACT BW								
12	0.1	84	152	0.9	1.14	29	16.6	38	70								
10%	25%	10%	4%	15%	35%	10%	10%	3%	ADJ WW (Ratio)								
CW	MARB	RE	FAT	\$M	\$B	\$C	822 (107)										
70	0.79	1.03	-0.01	93	185	333	ADJ YW (Ratio)										
10%	40%	10%	25%	2%	10%	3%	1214 (107)										
CED	BW	WW	YW	DMI	YH	SC	DOC	HP	CEM	MLK	MW	MH	CW	MARB	RE	FAT	TEND
20	51	6	3	78	18	18	4	15	21	4	25	21	5	30	2	14	36

Big time maternal and performance genetics with a bold presence in person.

20 Henke Thedford 2113 **ANGUS^{GS}**
Bull | REG: 20446334 | TAG: 2113 | DOB: 8/21/22 **FALL BULL**

Bar R Jet Black 5063#
Hoffman Thedford
 HA Rito Lady 3839#
 MFP Manning 750
HF Miss Manning 0254
 HF Miss Niagara 7223

Connealy Black Granite#
 Bar R Iris Anita 0113
 KG Solution 0018#
 HA Rito Lady 0622
 Quaker Hill Manning 4EX9
 MFP Top Rita 550#
 S S Niagara Z29#
 HF Miss War Party 5138

CED	BW	WW	YW	YH	SC	DOC	HP	MILK	ACT BW								
15	0.2	70	131	0.7	1.25	20	17.4	37	70								
3%	30%	30%	20%	30%	30%	45%	10%	4%	ADJ WW (Ratio)								
CW	MARB	RE	FAT	\$M	\$B	\$C	725 (94)										
83	0.7	1.23	0.003	84	202	346	ADJ YW (Ratio)										
2%	50%	2%	40%	10%	5%	2%	1147 (101)										
CED	BW	WW	YW	DMI	YH	SC	DOC	HP	CEM	MLK	MW	MH	CW	MARB	RE	FAT	TEND
4	21	53	41	71	38	35	34	8	52	5	85	42	4	58	5	50	28

#1 RE EPD Bull in the sale

21 Henke Thedford 2114 **ANGUS^{GS}**
Bull | REG: 20457484 | TAG: 2114 | DOB: 8/21/22 **FALL BULL**

Bar R Jet Black 5063#
Hoffman Thedford
 HA Rito Lady 3839#
 Mead Perseverance R1266
HF Rita 0202
 THM Rita All In 773

Connealy Black Granite#
 Bar R Iris Anita 0113
 KG Solution 0018#
 HA Rito Lady 0622
 Plattemere Weigh Up K360#
 Mead Miss Marathon L835#
 SS All in 4914
 THM Rita Granite 386-573

CED	BW	WW	YW	YH	SC	DOC	HP	MILK	ACT BW								
11	0.3	84	153	0.7	1.1	30	12.9	30	66								
15%	30%	10%	4%	30%	35%	5%	45%	25%	ADJ WW (Ratio)								
CW	MARB	RE	FAT	\$M	\$B	\$C	797 (101)										
71	0.69	0.89	0.008	79	182	315	ADJ YW (Ratio)										
10%	50%	20%	45%	15%	15%	10%	1247 (105)										
CED	BW	WW	YW	DMI	YH	SC	DOC	HP	CEM	MLK	MW	MH	CW	MARB	RE	FAT	TEND
31	51	17	9	44	55	33	2	46	83	36	41	33	11	56	9	24	73

Serious cow power for generations behind this bull!



22 Henke Colin's Thedford 2121 **ANGUS^{GS}**
FALL BULL

Bull | REG: 20457481 | TAG: 2121 | DOB: 8/22/22
 Bar R Jet Black 5063#
Hoffman Thedford
 HA Rito Lady 3839#
 Kesslers Commodore 6516
HF Colin's Anna 0182
 HF Colin's Anna 5203#

Connealy Black Granite#
 Bar R Iris Anita 0113
 KG Solution 0018#
 HA Rito Lady 0622
 Connealy Comrade 1385#
 Kesslers Rainbow 0595
 HF Destination 7055
 H F Miss IN Focus 6096

5	1.8	87	143	0.6	1.33	18	17.1	30	78								
60%	65%	4%	10%	40%	25%	55%	10%	25%	ADJ WW (Ratio)								
69	0.75	0.95	0.029	87	174	313	830	105	ADJ YW (Ratio)								
15%	40%	15%	75%	5%	20%	10%	1283	108	ADJ RIB (Ratio)								
60	31	7	55	61	54	23	56	18	58	30	70	57	14	47	14	53	8

One of Colins 2 Thedford sons with a ton of maternal power.

23 Henke Thedford 2122 **ANGUS^{GS}**
FALL BULL

Bull | REG: 20446332 | TAG: 2122 | DOB: 8/22/22
 Bar R Jet Black 5063#
Hoffman Thedford
 HA Rito Lady 3839#
 HF Googol 3002
HF Blackbird 0270
 HF Blackbird 4027

Connealy Black Granite#
 Bar R Iris Anita 0113
 KG Solution 0018#
 HA Rito Lady 0622
 SydGen Googol
 Stucky Eisa Erica 1311#
 Connealy Impression#
 HF Blackbird 1122#

5	2.8	81	146	1	1.94	28	17.5	39	76								
60%	85%	10%	10%	10%	4%	10%	10%	2%	ADJ WW (Ratio)								
68	0.97	0.73	0.021	80	184	319	778	98	ADJ YW (Ratio)								
15%	25%	40%	65%	15%	15%	10%	1263	106	ADJ RIB (Ratio)								
49	64	16	10	76	21	2	8	10	33	2	23	22	5	22	27	59	26

Improver for Docility and Fertility.

24 Henke Thedford 2193 **ANGUS^{GS}**
FALL BULL

Bull | REG: 20457490 | TAG: 2193 | DOB: 9/2/22
 Bar R Jet Black 5063#
Hoffman Thedford
 HA Rito Lady 3839#
 TC Total 410#
HF Kelly 4147
 HF Miss Kelly 8019

Connealy Black Granite#
 Bar R Iris Anita 0113
 KG Solution 0018#
 HA Rito Lady 0622
 Bon View New Design 208#
 TC Erica Eileen 2047
 Nichols Extra K205#
 H F Miss Trend 3080

2	2.8	86	155	1.4	2	17	12.9	31	78								
85%	85%	5%	3%	1%	3%	60%	45%	20%	ADJ WW (Ratio)								
78	0.8	0.71	-0.001	68	191	316	896	105	ADJ YW (Ratio)								
4%	35%	40%	35%	40%	10%	10%	1270	109	ADJ RIB (Ratio)								
88	84	8	5	67	4	1	48	29	46	12	25	8	4	32	27	28	73

Dam has 6 WW@103 and 5 YW@101. She reports 6 calves in a 356-day calving interval.

25 Henke Thedford 2196 **ANGUS^{GS}**
FALL BULL

Bull | REG: 20467284 | TAG: 2196 | DOB: 9/2/22
 Bar R Jet Black 5063#
Hoffman Thedford
 HA Rito Lady 3839#
 Blacktop Cash Crop
HF Blackbird 9224
 HF Blackbird 4155

Connealy Black Granite#
 Bar R Iris Anita 0113
 KG Solution 0018#
 HA Rito Lady 0622
 Barstow Cash#
 Blacktop Katinka Kay 778
 PA Safeguard 021#
 R F Blackbird 2149

3	2.6	73	137	0.8	1.48	14	16.6	25	76								
75%	80%	25%	15%	25%	15%	75%	10%	60%	ADJ WW (Ratio)								
64	0.37	0.75	0.007	59	156	261	839	106	ADJ YW (Ratio)								
20%	85%	35%	45%	65%	35%	40%	1250	105	ADJ RIB (Ratio)								
43	49	44	10	63	40	13	63	4	18	51	18	11	12	87	29	35	18

Dam has 2 BW@100, 2 WW@109, and 2 YW@112.



26 Henke Thedford 2202 **ANGUS^{GS}**
FALL BULL

Bull | REG: 20457494 | TAG: 2202 | DOB: 9/3/22
 Bar R Jet Black 5063#
Hoffman Thedford
 HA Rito Lady 3839#
 V A R Discovery 2240#
HF Athena 6089
 HF Athena 9008

Connealy Black Granite#
 Bar R Iris Anita 0113
 KG Solution 0018#
 HA Rito Lady 0622
 A A R Ten X 7008 S A#
 Deer Valley Rita 0308
 SydGen C C & 7#
 SydGen Athena 6543

5	3.3	88	152	1.1	1.32	21	15.1	32	83								
60%	90%	3%	4%	5%	25%	40%	20%	15%	ADJ WW (Ratio)								
87	0.65	1.01	-0.026	70	197	326	854	108	ADJ YW (Ratio)								
1%	55%	10%	10%	35%	10%	4%	1259	106	ADJ RIB (Ratio)								
33	38	25	31	60	58	13	27	46	36	34	54	43	8	42	8	11	15

Dam has 3 WW@105 and 2 YW@105.

27 Henke Thedford 2209 ANGUSGS

Bull | REG: 20457506 | TAG: 2209 | DOB: 9/3/22 FALL BULL

Bar R Jet Black 5063#
Hoffman Thedford
HA Rito Lady 3839#

HF Destination 5039

HF Miss Destination 7234

HF Miss Turbo 3173#

Connealy Black Granite#
Bar R Iris Anita 0113
KG Solution 0018#
HA Rito Lady 0622
B/R Destination 727-928#
Turner Image Maker 85#
SydGen Turbo 1549
HF Miss Total 1153

ADJ % IMF (Ratio)
1.85 (100)
ADJ RE (Ratio)
14.4 (100)
ADJ RIB (Ratio)
0.16 (100)

CED	BW	WW	YW	YH	SC	DOC	HP	MILK	ACT BW								
6	2.1	86	152	0.9	1.28	23	18.4	25	78								
55%	70%	5%	4%	15%	25%	30%	3%	60%	ADJ WW (Ratio)								
									775 (100)								
CW	MARB	RE	FAT	\$M	\$B	\$C	ADJ YW (Ratio)										
64	0.65	0.78	0.014	88	159	294	1095 (100)										
20%	55%	30%	55%	4%	30%	15%											
CED	BW	WW	YW	DMI	YH	SC	DOC	HP	CEM	MLK	MW	MH	CW	MARB	RE	FAT	TEND
43	48	7	10	98	33	31	28	3	30	62	36	17	12	57	20	42	13

Dam has 4 WW@102 and 4 YW@106.



28 Henke Thedford 2251 ANGUSGS

Bull | REG: 20457480 | TAG: 2251 | DOB: 9/8/22 FALL BULL

Bar R Jet Black 5063#
Hoffman Thedford
HA Rito Lady 3839#

Mead Perseverance R1266

HF Black Lady 0151

SydGen Black Lady 8685

Connealy Black Granite#
Bar R Iris Anita 0113
KG Solution 0018#
HA Rito Lady 0622
Plattemere Weigh Up K360#
Mead Miss Marathon L835#
Sitz Royal 9784
SydGen Black Lady 5041

ADJ % IMF (Ratio)
1.86 (77)
ADJ RE (Ratio)
13.1 (92)
ADJ RIB (Ratio)
0.13 (65)

CED	BW	WW	YW	YH	SC	DOC	HP	MILK	ACT BW								
9	0.8	84	152	0.8	1.77	26	17.1	28	65								
30%	40%	10%	4%	25%	10%	20%	10%	40%	ADJ WW (Ratio)								
									699 (88)								
CW	MARB	RE	FAT	\$M	\$B	\$C	ADJ YW (Ratio)										
69	0.8	0.87	0.001	78	184	317	1089 (91)										
15%	35%	20%	35%	15%	15%	10%											
CED	BW	WW	YW	DMI	YH	SC	DOC	HP	CEM	MLK	MW	MH	CW	MARB	RE	FAT	TEND
20	17	7	8	82	22	2	21	11	13	28	21	8	6	31	14	17	80

Excellent maternal pedigree with performance.



Reference Sire • Hoffman Thedford

29 Henke Thedford 3008 ANGUSGS

Bull | REG: 20700469 | TAG: 3008 | DOB: 1/20/23

Bar R Jet Black 5063#
Hoffman Thedford
HA Rito Lady 3839#

Deer Valley Growth Fund

Henke Athena 1019

HF Athena 8025

Connealy Black Granite#
Bar R Iris Anita 0113
KG Solution 0018#
HA Rito Lady 0622
Basin Payweight 1682#
Deer Valley Rita 36113
LD Capitalist 316#
HF Athena 6089

ADJ % IMF (Ratio)
2.41 (70)
ADJ RE (Ratio)
15.4 (102)
ADJ RIB (Ratio)
0.3 (83)

CED	BW	WW	YW	YH	SC	DOC	HP	MILK	ACT BW								
10	0.9	93	168	0.9	1.3	29	17.2	33	71								
20%	45%	2%	1%	15%	25%	10%	10%	15%	ADJ WW (Ratio)								
									791 (108)								
CW	MARB	RE	FAT	\$M	\$B	\$C	ADJ YW (Ratio)										
84	0.89	1.09	0.017	93	198	350	1356 (107)										
2%	30%	5%	55%	2%	10%	1%											
CED	BW	WW	YW	DMI	YH	SC	DOC	HP	CEM	MLK	MW	MH	CW	MARB	RE	FAT	TEND
34	44	4	2	97	30	38	5	7	20	17	28	29	2	15	5	58	24

A top performance and maternal bull ranking in the top 1% for Angle EPD.





Our favorite cow family for fertility

LOT 30

30 Henke Thedford 3024 **ANGUS**^{CS}

Bull | REG: 20700472 | TAG: 3024 | DOB: 1/24/23

Bar R Jet Black 5063#
Hoffman Thedford
 HA Rito Lady 3839#
 Galaxy Detail 8546
Henke Robyn 1082
 HF Robyn 3180

Connealy Black Granite#
 Bar R Iris Anita 0113
 KG Solution 0018#
 HA Rito Lady 0622
 Diablo Deluxe 1104
 Galaxy Blackbird 4551
 SydGen Turbo 1549
 HF Robyn 1157

ADJ % IMF (Ratio)	4.42 (128)
ADJ RE (Ratio)	15.4 (102)
ADJ RIB (Ratio)	0.44 (122)

CED	BW	WW	YW	YH	SC	DOC	HP	MILK	ACT BW
8	0.9	90	165	0.8	1.73	21	18.8	26	70
35%	45%	3%	1%	25%	10%	40%	3%	55%	ADJ WW (Ratio)
									695 (95)
CW	MARB	RE	FAT	\$M	\$B	\$C	ADJ YW (Ratio)		
70	1	0.87	0.026	88	182	324	1345 (107)		
10%	20%	20%	70%	4%	15%	5%			

CED	BW	WW	YW	DMI	YH	SC	DOC	HP	CEM	MLK	MW	MH	CW	MARB	RE	FAT	TEND
8	5	23	19	91	70	10	32	9	27	62	63	66	8	14	8	44	69

Top notch combo of growth, maternal and terminal traits. All around good one.

31 Henke Thedford 3057 **ANGUS**^{CS}

Bull | REG: 20700482 | TAG: 3057 | DOB: 2/1/23

Bar R Jet Black 5063#
Hoffman Thedford
 HA Rito Lady 3839#
 Casino Bomber N33#
HF Forever Lady 9037
 Circle A Forever Lady 9500

Connealy Black Granite#
 Bar R Iris Anita 0113
 KG Solution 0018#
 HA Rito Lady 0622
 KM Broken Bow 002#
 Casino Annie K48#
 G T Shear Force#
 Circle A Forever Lady 4131

ADJ % IMF (Ratio)	2.63 (76)
ADJ RE (Ratio)	14.2 (94)
ADJ RIB (Ratio)	0.37 (103)

CED	BW	WW	YW	YH	SC	DOC	HP	MILK	ACT BW
5	4	100	177	1.6	1.72	16	13.9	25	94
60%	95%	1%	1%	1%	10%	65%	35%	60%	ADJ WW (Ratio)
									780 (107)
CW	MARB	RE	FAT	\$M	\$B	\$C	ADJ YW (Ratio)		
91	0.72	0.83	0.025	63	192	312	1391 (111)		
1%	45%	25%	70%	55%	10%	10%			

CED	BW	WW	YW	DMI	YH	SC	DOC	HP	CEM	MLK	MW	MH	CW	MARB	RE	FAT	TEND
30	82	1	2	100	1	6	58	24	65	53	5	2	1	37	22	66	22

More growth, more frame, with a great look to him.



Top 1% WW, YW, CW EPDs

LOT 31

32 Henke Colin's Thedford 3062 ANGUS^{GS}

Bull | REG: 20700485 | TAG: 3062 | DOB: 2/2/23

Bar R Jet Black 5063#
Hoffman Thedford
 HA Rito Lady 3839#
 LD Capitalist 316#
HF Colin's Anna 7171
 HF Colin's Anna 5203#

Connealy Black Granite#
 Bar R Iris Anita 0113
 KG Solution 0018#
 HA Rito Lady 0622
 Connealy Capitalist 028#
 LD Dixie Erica 2053
 HF Destination 7055
 H F Miss IN Focus 6096

CED	BW	WW	YW	YH	SC	DOC	HP	MILK	ACT BW								
7	2.5	82	144	1.1	1.08	27	13.7	23	82								
45%	80%	10%	10%	5%	40%	15%	35%	75%	ADJ WW (Ratio)								
CW	MARB	RE	FAT	\$M	\$B	\$C	ADJ YW (Ratio)										
82	0.35	0.79	0.048	80	181	315	ADJ YW (Ratio)										
3%	85%	30%	90%	15%	15%	10%	1249 (99)										
CED	BW	WW	YW	DMI	YH	SC	DOC	HP	CEM	MLK	MW	MH	CW	MARB	RE	FAT	TEND
46	73	16	11	37	13	31	12	35	63	63	47	31	6	76	21	67	15

Dam has 4 WW@103 and 3 YW@103. The grandam (Colins cow) holds pathfinder status.

33 Henke Thedford 3064 ANGUS^{GS}

Bull | REG: 20700487 | TAG: 3064 | DOB: 2/2/23

Bar R Jet Black 5063#
Hoffman Thedford
 HA Rito Lady 3839#
 V A R Signal 7244
WSC Opal G319
 2XL Opal 5933

Connealy Black Granite#
 Bar R Iris Anita 0113
 KG Solution 0018#
 HA Rito Lady 0622
 Basin Payweight 1682#
 PF CC&7 Henrietta Pride 1044
 Baldrige Waylon W34#
 EC Objective N2189

CED	BW	WW	YW	YH	SC	DOC	HP	MILK	ACT BW								
16	-0.1	93	166	0.5	1.57	31	13.2	29	58								
2%	25%	2%	1%	55%	15%	4%	40%	30%	ADJ WW (Ratio)								
CW	MARB	RE	FAT	\$M	\$B	\$C	ADJ YW (Ratio)										
84	0.71	0.94	0.04	74	183	311	ADJ YW (Ratio)										
2%	45%	15%	85%	25%	15%	10%	1285 (100)										
CED	BW	WW	YW	DMI	YH	SC	DOC	HP	CEM	MLK	MW	MH	CW	MARB	RE	FAT	TEND
1	4	9	7	97	82	6	2	32	53	40	26	71	3	56	21	79	42

Rare combo of top 2% CED and top 2% WW EPD.



DATA TURNED IN TO THE ANGUS ASSOCIATION ON EACH BULL

- Calving Ease Direct Score
- Birth Weight
- Weaning Weight
- Yearling Weight
- Yearling Height
- Docility Score
- Scrotal Size
- Claw and Angle (Foot Scores)
- Ultra Sound (IMF, RE Area, Rib & Rump Fat)
- DNA Scores

We give you all the tools you need to make the most informed decisions!



34 Henke Patriarch 2265 **ANGUS^{GS}**
FALL BULL
 Bull | REG: 20462799 | TAG: 2265 | DOB: 9/14/22
 Hoover Dam#
 S S Niagara Z29#
 Jet S S X144
Tehama Patriarch F028
 Tehama Elite Blackbird D826
 Connealy Thunder#
 Tehama Elite Blackbird Z630
 Basin Payweight 1682#
 Deer Valley Growth Fund
 Deer Valley Rita 36113
HF Blackbird 0215
 HF Blackbird 4155
 R F Blackbird 2149

ADJ % IMF (Ratio)	2.26 (93)
ADJ RE (Ratio)	13.4 (94)
ADJ RIB (Ratio)	0.19 (95)

CED	BW	WW	YW	YH	SC	DOC	HP	MILK	ACT BW								
9	-0.1	83	157	0.5	1.63	24	22.6	29	64								
30%	25%	10%	3%	55%	10%	25%	1%	30%	ADJ WW (Ratio)								
									759 (96)								
									ADJ YW (Ratio)								
									1197 (101)								
CW	MARB	RE	FAT	\$M	\$B	\$C											
68	0.96	0.82	-0.008	90	182	326											
15%	25%	25%	25%	3%	15%	4%											
CED	BW	WW	YW	DMI	YH	SC	DOC	HP	CEM	MLK	MW	MH	CW	MARB	RE	FAT	TEND
31	20	5	2	100	33	15	18	1	41	32	8	23	6	20	19	42	6

A stout made dude ranking in the top 2% for Claw EPD.

35 Henke Patriarch 2137 **ANGUS^{GS}**
FALL BULL
 Bull | REG: 20446347 | TAG: 2137 | DOB: 8/24/22
 Hoover Dam#
 S S Niagara Z29#
 Jet S S X144
Tehama Patriarch F028
 Tehama Elite Blackbird D826
 Connealy Thunder#
 Tehama Elite Blackbird Z630
 Quaker Hill Manning 4EX9
 MFP Manning 750
 MFP Top Rita 550#
HF Emblynette 0107
 HF Emblynette 6032#
 RA F Emblynette JJR 2491#

ADJ % IMF (Ratio)	2.33 (96)
ADJ RE (Ratio)	13.7 (96)
ADJ RIB (Ratio)	0.17 (85)

CED	BW	WW	YW	YH	SC	DOC	HP	MILK	ACT BW								
9	-0.2	81	142	0.6	1.07	20	14.9	28	74								
30%	20%	10%	10%	40%	40%	45%	25%	40%	ADJ WW (Ratio)								
									894 (113)								
									ADJ YW (Ratio)								
									1260 (106)								
CW	MARB	RE	FAT	\$M	\$B	\$C											
69	0.98	0.65	0.006	76	182	312											
15%	25%	50%	40%	20%	15%	10%											
CED	BW	WW	YW	DMI	YH	SC	DOC	HP	CEM	MLK	MW	MH	CW	MARB	RE	FAT	TEND
69	57	19	12	94	58	29	38	17	40	36	39	49	19	22	69	72	9

Great combo of low birth and high growth. Keep the daughters.





36 **Henke Convoy 2213 ET** **ANGUS** **FALL BULL**

Bull | REG: 20457500 | TAG: 2213 | DOB: 9/4/22

Connealy Concord#
Connealy Convoy
 Ebbie of Conanga 5473

LD Capitalist 316#
HF Barbara 7148
 HF Barbara 5148

Connealy Consensus#
 Eura Elga of Conanga 9109#
 Connealy Confidence Plus#
 Ebanna of Conanga 472 294X
 Connealy Capitalist 028#
 LD Dixie Erica 2053
 V A R Discovery 2240#
 HF Barbara 1174#

8	2.2	88	152	0.8	1.43	26	14.9	33	82								
35%	75%	3%	4%	25%	20%	20%	25%	15%	ADJ WW (Ratio)								
65	0.83	1.16	-0.014	78	171	300			838 (103)								
20%	35%	3%	20%	15%	20%	15%			ADJ YW (Ratio)								
42	80	3	7	98	23	9	41	20	4	17	25	27	10	24	1	7	51

ADJ % IMF (Ratio)	2.55 (90)
ADJ RE (Ratio)	15.4 (109)
ADJ RIB (Ratio)	0.18 (100)

Donor dam has 4 BW@97, 4 WW@104, and 3 YW@102.



Maternal Brother to Lot 36 • HF Growth Fund 0163
 sold to Crooked Creek Angus in 2022

Embryo Transplants Ratios (ET)

We continue to have more and more embryo transplant bulls in our sale each year. If the bull was raised by a registered recipient dam then that bull will receive his ratio for weaning. If the recipient dam was a commercial cow that bull will receive the average, or a 100 ratio. Remember each point above or below the average of 100 is how that animal compared in his contemporary group (the group he was raised in).

top cut sons



Reference Sire • Yon Top Cut G730

37 Henke Top Cut 3006 ANGUS^{CS}

Bull | REG: 20700467 | TAG: 3006 | DOB: 1/20/23
 Spring Cove Reno 4021#
Yon Top Cut G730
 Yon Sarah D668
 Galaxy Detail 8546
Henke Forever Lady 1033
 SydGen Forever Lady 4286

KM Broken Bow 002#
 Spring Cove Liza 021
 V A R Discovery 2240#
 Yon Sarah A615
 Diablo Deluxe 1104
 Galaxy Blackbird 4551
 SydGen Survivor 1456
 SydGen Forever Lady 2164#

ADJ % IMF (Ratio)
7.3 (211)
 ADJ RE (Ratio)
15 (99)
 ADJ RIB (Ratio)
0.43 (119)

CED	BW	WW	YW	YH	SC	DOC	HP	MILK	ACT BW								
9	1	81	143	0.7	1.77	28	19.6	36	70								
30%	45%	10%	10%	30%	10%	10%	2%	5%	ADJ WW (Ratio)								
									772 (106)								
CW	MARB	RE	FAT	\$M	\$B	\$C	ADJ YW (Ratio)										
61	1.47	0.92	-0.026	79	195	332	1322 (105)										
25%	3%	15%	10%	15%	10%	3%											
CED	BW	WW	YW	DMI	YH	SC	DOC	HP	CEM	MLK	MW	MH	CW	MARB	RE	FAT	TEND
16	19	38	31	60	43	5	8	3	12	8	32	30	22	3	14	21	63

a standout phenotype!

Top 2% HP, \$G • Top 3% MARB, \$C

neat pedigree & balanced data



Influential Donor Dam
of Lot 38
HF Barbara 0169



LOT
38

#1 \$M IN THE SALE
6.99 %IMF

38 Henke Top Cut 3035 ET ANGUS^{GS}

Bull | REG: 20700474 | TAG: 3035 | DOB: 1/27/23
Spring Cove Reno 4021#
Yon Top Cut G730
Yon Sarah D668
Deer Valley Growth Fund
HF Barbara 0169
HF Barbara 7148

CED	BW	WW	YW	YH	SC	DOC	HP	MILK	ACT BW								
11	1.1	98	156	0.4	1.67	15	17.9	21	77								
15%	50%	1%	3%	65%	10%	70%	5%	85%	ADJ WW (Ratio)								
									711 (94)								
CW	MARB	RE	FAT	\$M	\$B	\$C	ADJ YW (Ratio)										
59	1.17	0.91	0.007	109	170	329	1333 (98)										
30%	15%	20%	45%	1%	20%	4%											
CED	BW	WW	YW	DMI	YH	SC	DOC	HP	CEM	MLK	MW	MH	CW	MARB	RE	FAT	TEND
4	13	4	40	73	75	5	76	8	15	74	69	54	18	7	18	68	98

The #2 ADJ IMF Bull in the sale.

39 Henke Top Cut 3050 ANGUS^{GS}

Bull | REG: 20700481 | TAG: 3050 | DOB: 1/31/23
Spring Cove Reno 4021#
Yon Top Cut G730
Yon Sarah D668
HF Southside 6139
Henke Forever Lady 1039
HF Forever Lady 9124

CED	BW	WW	YW	YH	SC	DOC	HP	MILK	ACT BW								
8	1.7	83	142	0.9	1.76	30	17.2	38	73								
35%	65%	10%	10%	15%	10%	5%	10%	3%	ADJ WW (Ratio)								
									763 (105)								
CW	MARB	RE	FAT	\$M	\$B	\$C	ADJ YW (Ratio)										
68	0.98	0.66	-0.01	88	178	319	1225 (97)										
15%	25%	50%	25%	4%	15%	10%											
CED	BW	WW	YW	DMI	YH	SC	DOC	HP	CEM	MLK	MW	MH	CW	MARB	RE	FAT	TEND
55	72	8	11	90	9	12	6	22	37	2	28	23	8	13	58	48	100

Another female maker with performance.

40 Henke Top Cut 3090 ANGUS^{GS}

Bull | REG: 20700492 | TAG: 3090 | DOB: 2/8/23
Spring Cove Reno 4021#
Yon Top Cut G730
Yon Sarah D668
Tehama Patriarch F028
HF Chloe 0020
HF Chloe 7037

CED	BW	WW	YW	YH	SC	DOC	HP	MILK	ACT BW								
5	3	91	143	0.6	1.41	15	24.4	29	83								
60%	85%	2%	10%	40%	20%	70%	1%	30%	ADJ WW (Ratio)								
									825 (113)								
CW	MARB	RE	FAT	\$M	\$B	\$C	ADJ YW (Ratio)										
47	1.54	0.86	-0.033	105	178	336	1316 (104)										
60%	3%	25%	10%	1%	15%	3%											
CED	BW	WW	YW	DMI	YH	SC	DOC	HP	CEM	MLK	MW	MH	CW	MARB	RE	FAT	TEND
66	80	9	58	61	60	26	46	1	33	27	58	61	56	2	29	56	89

The #1 HP EPD and MB EPD in the Sale. The #1 ADJ IMF bull in the sale. Dam has 2 WW@108.



LOT
40

#1 HP EPD @ 24.3 - 7.94 %IMF

regiment sons



41 Henke Regiment 3048 ANGUS^{GS}

Bull | REG: 20700479 | TAG: 3048 | DOB: 1/30/23

WAR Cavalry B063 Z044
Wilks Regiment 9035
 Vintage Chloe 6137

V A R Discovery 2240#
HF Rose 7034#
 HF Rose 5002

Connealy Cavalry 1149#
 War CC&7 Z044 X029
 V A R Empire 3037
 V A R Chloe 2227
 A A R Ten X 7008 S A#
 Deer Valley Rita 0308
 SydGen Liberty GA 8627#
 SydGen Rose 3205

ADJ % IMF (Ratio)
3.94 (114)
ADJ RE (Ratio)
14.5 (96)
ADJ RIB (Ratio)
0.28 (78)

CED	BW	WW	YW	YH	SC	DOC	HP	MILK	ACT BW								
6	0	80	144	0.8	1.23	22	18.9	35	72								
55%	25%	10%	10%	25%	30%	35%	2%	10%									
CW	MARB	RE	FAT	\$M	\$B	\$C											
84	1.19	0.96	-0.011	83	216	363			728 (100)								
2%	10%	15%	20%	10%	2%	1%			ADJ YW (Ratio)								
									1200 (95)								
CED	BW	WW	YW	DMI	YH	SC	DOC	HP	CEM	MLK	MW	MH	CW	MARB	RE	FAT	TEND
55	16	21	15	87	64	13	17	3	76	9	42	60	8	6	9	11	48

Dam has 5 BW@92, 5 WW@104 and 4 YW@104. #1 \$C bull in the sale.

42 Henke Regiment 3004 ANGUS^{GS}

Bull | REG: 20700465 | TAG: 3004 | DOB: 1/17/23

WAR Cavalry B063 Z044
Wilks Regiment 9035
 Vintage Chloe 6137

V A R Signal 7244
Henke Brenna 1132
 HF Brenna 3033

Connealy Cavalry 1149#
 War CC&7 Z044 X029
 V A R Empire 3037
 V A R Chloe 2227
 Basin Payweight 1682#
 PF CC&7 Henrietta Pride 1044
 Poss Total Impact 745#
 Turner Objective 9087

ADJ % IMF (Ratio)
2.54 (73)
ADJ RE (Ratio)
14.4 (95)
ADJ RIB (Ratio)
0.32 (89)

CED	BW	WW	YW	YH	SC	DOC	HP	MILK	ACT BW								
10	2	101	179	1.1	1.14	18	15.2	25	75								
20%	70%	1%	1%	5%	35%	55%	20%	60%									
CW	MARB	RE	FAT	\$M	\$B	\$C											
88	0.98	0.95	0.003	66	204	331			815 (112)								
1%	25%	15%	40%	45%	4%	3%			ADJ YW (Ratio)								
									1375 (109)								
CED	BW	WW	YW	DMI	YH	SC	DOC	HP	CEM	MLK	MW	MH	CW	MARB	RE	FAT	TEND
12	16	3	2	100	23	28	59	13	48	60	3	10	6	11	10	42	83

#3 WW EPD bull in the sale. #2 YW EPD bull in the sale.

43 Henke Regiment 3005 ANGUS^{GS}

Bull | REG: 20700466 | TAG: 3005 | DOB: 1/20/23

WAR Cavalry B063 Z044
Wilks Regiment 9035
 Vintage Chloe 6137

Deer Valley Growth Fund
Henke Blackbird 1009
 HF Blackbird 8022

Connealy Cavalry 1149#
 War CC&7 Z044 X029
 V A R Empire 3037
 V A R Chloe 2227
 Basin Payweight 1682#
 Deer Valley Rita 36113
 HA Cowboy Up 5405#
 HF Blackbird 1122#

ADJ % IMF (Ratio)
3.04 (88)
ADJ RE (Ratio)
15.2 (101)
ADJ RIB (Ratio)
0.44 (122)

CED	BW	WW	YW	YH	SC	DOC	HP	MILK	ACT BW								
13	-0.7	84	154	0.5	1.26	31	12.2	35	72								
10%	15%	10%	3%	55%	25%	4%	50%	10%									
CW	MARB	RE	FAT	\$M	\$B	\$C											
61	0.73	0.73	0.011	62	155	263			801 (110)								
25%	45%	40%	50%	55%	35%	40%			ADJ YW (Ratio)								
									1321 (105)								
CED	BW	WW	YW	DMI	YH	SC	DOC	HP	CEM	MLK	MW	MH	CW	MARB	RE	FAT	TEND
5	7	15	11	95	67	21	2	43	6	21	21	35	34	35	29	54	45

Top 3% for Calving Ease Maternal, great docility.

44 Henke Regiment 3036 ANGUS^{GS}

Bull | REG: 20700475 | TAG: 3036 | DOB: 1/27/23

WAR Cavalry B063 Z044
Wilks Regiment 9035
 Vintage Chloe 6137

HF Stealth 8072
HF Annie 0035
 Turner Image Maker 85#

Connealy Cavalry 1149#
 War CC&7 Z044 X029
 V A R Empire 3037
 V A R Chloe 2227
 Connealy Armory#
 HF Robyn 1157
 H A Image Maker 0415#
 Turner K856 9124

ADJ % IMF (Ratio)
3.39 (98)
ADJ RE (Ratio)
15.5 (103)
ADJ RIB (Ratio)
0.35 (97)

CED	BW	WW	YW	YH	SC	DOC	HP	MILK	ACT BW								
10	1.5	88	162	1.3	1.81	17	17.5	35	78								
20%	60%	3%	2%	2%	10%	60%	10%	10%									
CW	MARB	RE	FAT	\$M	\$B	\$C											
74	0.87	0.98	-0.015	67	188	311			775 (106)								
10%	30%	10%	20%	45%	10%	10%			ADJ YW (Ratio)								
									1337 (106)								
CED	BW	WW	YW	DMI	YH	SC	DOC	HP	CEM	MLK	MW	MH	CW	MARB	RE	FAT	TEND
10	15	4	3	94	5	6	43	3	69	10	6	6	7	25	18	53	80

Grandson of the big egg producing and maternal/performance matron "85".

45 Henke Pacific 2185 **ANGUS^{GS}**
FALL BULL

Bull | REG: 20446327 | TAG: 2185 | DOB: 9/1/22

Hoover No Doubt
Sterling Pacific 904
 Baldrige Isabel B082

V A R Power Play 7018
Valley Oaks Rita S966
 Valley Oaks Miss Rita 5033

Mogck Bullseye#
 Miss Blackcap Ellston J2
 G A R Prophet#
 Baldrige Isabel Y69
 Basin Payweight 1682#
 Sandpoint Blackbird 8809
 Plattermere Weigh Up K360#
 VO Miss Rita 92

CED	BW	WW	YW	YH	SC	DOC	HP	MILK	ACT BW								
9	3	92	156	0.6	0.74	31	13.2	24	83								
30%	85%	2%	3%	40%	60%	4%	40%	70%									
CW	MARB	RE	FAT	\$M	\$B	\$C	ADJ % IMF (Ratio)										
70	1.3	1.02	0.056	84	188	328	5.63 (232)										
10%	10%	10%	95%	10%	10%	4%	ADJ RE (Ratio)										
							17.3 (122)										
							ADJ RIB (Ratio)										
							0.43 (215)										
CED	BW	WW	YW	DMI	YH	SC	DOC	HP	CEM	MLK	MW	MH	CW	MARB	RE	FAT	TEND
23	78	11	11	97	73	49	4	38	25	84	46	64	17	7	9	74	87

Top ADJ YW Fall Bull and second largest ADJ RE bull. Dam has 2 WW@114 and 2 YW@113. We have used this bull and try to keep him on a diet. He can gain weight on thin air we think.



46 Henke Pacific 2179 **ANGUS^{GS}**
FALL BULL

Bull | REG: 20457477 | TAG: 2179 | DOB: 9/1/22

Hoover No Doubt
Sterling Pacific 904
 Baldrige Isabel B082

RRC Prophet Time 031
HF Katinka 0140
 HF Katinka 8144

Mogck Bullseye#
 Miss Blackcap Ellston J2
 G A R Prophet#
 Baldrige Isabel Y69
 G A R Prophet 7244
 G A R Daybreak 1962
 LD Capitalist 316#
 HF Katinka 6207

CED	BW	WW	YW	YH	SC	DOC	HP	MILK	ACT BW								
7	1.8	72	124	0.8	0.57	30	13.6	35	80								
45%	65%	25%	30%	25%	70%	5%	35%	10%									
CW	MARB	RE	FAT	\$M	\$B	\$C	ADJ % IMF (Ratio)										
61	0.84	0.63	0.025	94	166	309	2.14 (88)										
25%	35%	55%	70%	2%	25%	10%	ADJ RE (Ratio)										
							12.6 (89)										
							ADJ RIB (Ratio)										
							0.2 (100)										
CED	BW	WW	YW	DMI	YH	SC	DOC	HP	CEM	MLK	MW	MH	CW	MARB	RE	FAT	TEND
33	45	39	48	45	26	68	8	22	5	6	70	58	16	19	53	78	38

Maternal genetics and top 10% Claw EPD.



Maternal Brother to Lot 47
Henke Regiment 1233
 3rd top seller to Poor Folk Farms in 2023



Reference Sire
Sterling Pacific 904

47 Henke Pacific 2222 **ANGUS^{GS}**
FALL BULL

Bull | REG: 20457497 | TAG: 2222 | DOB: 9/5/22

Hoover No Doubt
Sterling Pacific 904
 Baldrige Isabel B082

K C F Bennett Southside#
HF Miss Southside 6149
 HF Miss All Around 1177

Mogck Bullseye#
 Miss Blackcap Ellston J2
 G A R Prophet#
 Baldrige Isabel Y69
 Nichols Extra K205#
 K C F Miss 208 S11#
 HF All Around 9002
 HF Miss Frontier 8088

CED	BW	WW	YW	YH	SC	DOC	HP	MILK	ACT BW								
1	4	89	155	1.1	1.23	27	12.3	27	91								
90%	95%	3%	3%	5%	30%	15%	50%	45%									
CW	MARB	RE	FAT	\$M	\$B	\$C	ADJ % IMF (Ratio)										
84	0.8	1.02	-0.024	55	190	301	2.85 (117)										
2%	35%	10%	10%	75%	10%	15%	ADJ RE (Ratio)										
							13.3 (94)										
							ADJ RIB (Ratio)										
							0.18 (90)										
CED	BW	WW	YW	DMI	YH	SC	DOC	HP	CEM	MLK	MW	MH	CW	MARB	RE	FAT	TEND
68	84	8	2	99	17	29	32	33	35	43	3	5	3	41	5	5	36

Dam has 5 BW@95, 5 WW@104, and 5 YW@100.



48 Henke Pacific 2230 ANGUS^{GS} FALL BULL

Bull | REG: 20449059 | TAG: 2230 | DOB: 9/5/22

Hoover No Doubt
Sterling Pacific 904
Baldrige Isabel B082

JMB Traction 292#
HF Miss Traction 5183
HF Miss Destination 9026

Mogck Bullseye#
Miss Blackcap Ellston J2
G A R Prophet#
Baldrige Isabel Y69
Sitz Top Game 561X#
JMB Emulota 013
B/R Destination 727-928#
H F Miss Lead on 6013

CED	BW	WW	YW	YH	SC	DOC	HP	MILK	ACT BW								
0	3.2	74	123	0.8	0.2	23	14	25	81								
90%	90%	25%	35%	25%	90%	30%	30%	60%	ADJ WW (Ratio)								
CW	MARB	RE	FAT	\$M	\$B	\$C											
58	0.9	0.69	0.018	95	164	308	ADJ YW (Ratio)										
30%	30%	45%	60%	2%	25%	10%	1157 (97)										
CED	BW	WW	YW	DMI	YH	SC	DOC	HP	CEM	MLK	MW	MH	CW	MARB	RE	FAT	TEND
86	78	33	41	66	38	75	33	17	23	57	82	41	29	18	35	59	4

Dam has 5 BW@95, and 5 WW@100.



Maternal Brother to Lot 49
Henke Convoy 1012
sold to James & Kathy Mann in 2022



51 Henke Pacific 3023 ANGUS^{GS}

Bull | REG: 20701683 | TAG: 3023 | DOB: 1/23/23

Hoover No Doubt
Sterling Pacific 904
Baldrige Isabel B082

Galaxy Detail 8546
Henke Pride Lass 1075
HF Pride Lass 6055#

Mogck Bullseye#
Miss Blackcap Ellston J2
G A R Prophet#
Baldrige Isabel Y69
Diablo Deluxe 1104
Galaxy Blackbird 4551
R B Tour Of Duty 177#
HF Pride Lass 2120#

CED	BW	WW	YW	YH	SC	DOC	HP	MILK	ACT BW								
8	1.4	78	132	0.6	0.52	22	13.5	26	68								
35%	55%	15%	20%	40%	75%	35%	35%	55%	ADJ WW (Ratio)								
CW	MARB	RE	FAT	\$M	\$B	\$C											
57	1.09	0.73	-0.025	65	174	291	ADJ YW (Ratio)										
35%	15%	40%	10%	50%	20%	20%	760 (104)										
CED	BW	WW	YW	DMI	YH	SC	DOC	HP	CEM	MLK	MW	MH	CW	MARB	RE	FAT	TEND
53	68	35	42	53	38	74	60	26	21	49	38	36	24	11	19	16	57

Balanced trait bull, top 15% Claw EPD. Pacific sons are easy to flesh.

49 Henke Pacific 3060 ANGUS^{GS}

Bull | REG: 20701746 | TAG: 3060 | DOB: 2/1/23

Hoover No Doubt
Sterling Pacific 904
Baldrige Isabel B082

Poss Achievement#
HF Miss Dianna 9069
Barstow Miss Dianna D218

Mogck Bullseye#
Miss Blackcap Ellston J2
G A R Prophet#
Baldrige Isabel Y69
Poss Lasting Impact 3118
Poss Erica 327
WK Rocky 2339
Barstow Miss Dianna X128#

CED	BW	WW	YW	YH	SC	DOC	HP	MILK	ACT BW								
8	3.4	84	151	1	1.1	31	15.6	23	77								
35%	90%	10%	5%	10%	35%	4%	20%	75%	ADJ WW (Ratio)								
CW	MARB	RE	FAT	\$M	\$B	\$C											
80	0.62	0.59	0.03	72	167	289	ADJ YW (Ratio)										
3%	55%	60%	75%	30%	25%	20%	1339 (106)										
CED	BW	WW	YW	DMI	YH	SC	DOC	HP	CEM	MLK	MW	MH	CW	MARB	RE	FAT	TEND
38	82	13	5	100	31	21	16	6	72	89	16	16	5	45	69	75	35

Dam has 2 BW@100, 2 WW@108, and 1 YW@115.

50 Henke Pacific 3021 ANGUS^{GS}

Bull | REG: 20701738 | TAG: 3021 | DOB: 1/22/23

Hoover No Doubt
Sterling Pacific 904
Baldrige Isabel B082

Mead Perseverance R1266
HF Blackcap 0191
Galaxy Blackcap 6461#

Mogck Bullseye#
Miss Blackcap Ellston J2
G A R Prophet#
Baldrige Isabel Y69
Plattmere Weigh Up K360#
Mead Miss Marathon L835#
S Whitlock 179#
PAF Blackcap 8130#

CED	BW	WW	YW	YH	SC	DOC	HP	MILK	ACT BW								
10	0.9	79	147	0.4	0.44	25	15.3	24	68								
20%	45%	15%	10%	65%	80%	20%	20%	70%	ADJ WW (Ratio)								
CW	MARB	RE	FAT	\$M	\$B	\$C											
52	1.24	0.55	0.016	65	167	282	ADJ YW (Ratio)										
45%	10%	65%	55%	50%	25%	25%	1209 (96)										
CED	BW	WW	YW	DMI	YH	SC	DOC	HP	CEM	MLK	MW	MH	CW	MARB	RE	FAT	TEND
28	35	27	5	98	81	87	18	23	49	86	25	50	57	4	70	71	66

Calving ease, growth, and marbling with high heifer pregnancy.

52 Henke Pacific 3042 ANGUS^{GS}

Bull | REG: 20701743 | TAG: 3042 | DOB: 1/29/23

Hoover No Doubt
Sterling Pacific 904
Baldrige Isabel B082

HF Stealth 8072
HF Annie 0015
Turner Image Maker 85#

Mogck Bullseye#
Miss Blackcap Ellston J2
G A R Prophet#
Baldrige Isabel Y69
Connealy Armory#
HF Robyn 1157
H A Image Maker 0415#
Turner K856 9124

CED	BW	WW	YW	YH	SC	DOC	HP	MILK	ACT BW								
4	1.6	84	148	0.9	1.32	32	12.3	29	77								
70%	60%	10%	10%	15%	25%	3%	50%	30%	ADJ WW (Ratio)								
CW	MARB	RE	FAT	\$M	\$B	\$C											
59	0.55	0.86	0.002	69	150	264	ADJ YW (Ratio)										
30%	65%	25%	35%	35%	40%	40%	1255 (100)										
CED	BW	WW	YW	DMI	YH	SC	DOC	HP	CEM	MLK	MW	MH	CW	MARB	RE	FAT	TEND
62	57	13	5	80	32	41	8	46	82	33	13	21	25	39	25	25	45

Top 5% Claw EPD and great performance. Check out who grandmother is.

53 Henke Bomber 2319 **ANGUSGS**
FALL BULL

Bull | REG: 20699794 | TAG: 2319 | DOB: 11/20/22
 Casino Bomber N33#
HF Bomber 0063
 HF Pride Lass 7072
 Nichols Extra K205#
HF Emma 5184#
 HF Miss Emma 0188

KM Broken Bow 002#
 Casino Annie K48#
 JMB Traction 292#
 HF Pride Lass 2120#
 Nichols Extra H6#
 Nichols Black Heiress F346
 HF Destination 7055
 HF Miss Emma 7040

ADJ % IMF (Ratio)
()
ADJ RE (Ratio)
()
ADJ RIB (Ratio)
()

CED	BW	WW	YW	YH	SC	DOC	HP	MILK	ACT BW								
10	1.5	86	144	0.7	1.28	23	19.1	35	97								
20%	60%	5%	10%	30%	25%	30%	2%	10%									
CW	MARB	RE	FAT	\$M	\$B	\$C											
62	0.53	0.5	0.063	92	134	266	791 (101)										
25%	65%	75%	95%	2%	65%	35%	ADJ YW (Ratio)										
							1215 (100)										
CED	BW	WW	YW	DMI	YH	SC	DOC	HP	CEM	MLK	MW	MH	CW	MARB	RE	FAT	TEND
22	32	10	18	86	48	24	9	1	87	13	32	60	25	47	44	87	76

Dam has 4 WW@105 and 4 YW@104.



Maternal Brother to Lot 53 • HF Jet Black 0173
 sold to Jerry Taylor in 2022



HIGH \$M GENETICS

LOT 53

blending marbling and fertility

54 Henke Xpand 2275 **ANGUSGS**
FALL BULL

Bull | REG: 20467280 | TAG: 2275 | DOB: 9/20/22
 baldrige Xpand x743
Hart Xpand 0051
 Hart Misti Et 3409
 DL Dually#
HF Rose 9173
 HF Rose 5002

Hoover Dam#
 Baldrige Queen S87
 Connealy Cavalry 1149#
 Hart Misti 7017#
 DL Sonic 444#
 DL Incentive 2103
 SydGen Liberty GA 8627#
 SydGen Rose 3205

ADJ % IMF (Ratio)
2.18 (90)
ADJ RE (Ratio)
14.1 (99)
ADJ RIB (Ratio)
0.23 (115)

CED	BW	WW	YW	YH	SC	DOC	HP	MILK	ACT BW								
15	-0.4	71	131	0.6	1.59	34	15.3	28	68								
3%	20%	30%	20%	40%	15%	1%	20%	40%									
CW	MARB	RE	FAT	\$M	\$B	\$C											
52	0.65	0.47	0.002	84	152	281	676 (85)										
45%	55%	80%	35%	10%	40%	25%	ADJ YW (Ratio)										
							1122 (94)										
CED	BW	WW	YW	DMI	YH	SC	DOC	HP	CEM	MLK	MW	MH	CW	MARB	RE	FAT	TEND
11	18	45	37	60	70	8	1	12	44	48	55	73	58	60	70	54	4

Superior calving ease and top 2% Claw EPD.

55 Henke Xpand 2089 **ANGUSGS**
FALL BULL

Bull | REG: 20467261 | TAG: 2089 | DOB: 3/5/22
 baldrige Xpand x743
Hart Xpand 0051
 Hart Misti Et 3409
 Tehama Patriarch F028
HF Duchess 0065
 HF Duchess 5046

Hoover Dam#
 Baldrige Queen S87
 Connealy Cavalry 1149#
 Hart Misti 7017#
 S S Niagara Z29#
 Tehama Elite Blackbird D826
 EXAR Powerhouse 2077B#
 HF Duchess 2014

ADJ % IMF (Ratio)
9.49 (184)
ADJ RE (Ratio)
15.1 (101)
ADJ RIB (Ratio)
0.54 (132)

CED	BW	WW	YW	YH	SC	DOC	HP	MILK	ACT BW								
11	-0.4	69	119	0.6	0.66	16	16.7	38	67								
15%	20%	35%	40%	65%	65%	10%	3%										
CW	MARB	RE	FAT	\$M	\$B	\$C											
47	1.53	0.42	0.028	89	174	315	715 (97)										
60%	3%	85%	70%	4%	20%	10%	ADJ YW (Ratio)										
							1264 (95)										
CED	BW	WW	YW	DMI	YH	SC	DOC	HP	CEM	MLK	MW	MH	CW	MARB	RE	FAT	TEND
33	28	43	33	95	51	37	71	5	70	5	76	78	47	4	88	83	18

Adjust your eyes to the youngest bull. Top 3% Marbling and top 10%

HPI!

growth fund sons



56 Henke Growth Fund 2095 ET ANGUS^{GS}

Bull | REG: 20457487 | TAG: 2095 | DOB: 8/14/22 **FALL BULL**

Basin Payweight 1682#
Deer Valley Growth Fund
 Deer Valley Rita 36113

Basin Payweight 006S#
 21AR O Lass 7017
 Plattermere Weigh Up K360#
 Deer Valley Rita 9457
 Sitz Upward 307R#
 EXAR Barbara T020#
 TC Total 410#
 SydGen Pride 7165

EXAR Upshot 0562B#
HF Pride 4033
 HF Pride 1012#

ADJ % IMF (Ratio)	1.93 (68)
ADJ RE (Ratio)	13.4 (95)
ADJ RIB (Ratio)	0.12 (67)

CED	BW	WW	YW	YH	SC	DOC	HP	MILK	ACT BW								
1	2	80	145	0.8	1.15	20	12.3	33	59								
90%	70%	10%	10%	25%	35%	45%	50%	15%	ADJ WW (Ratio)								
CW	MARB	RE	FAT	\$M	\$B	\$C			816 (101)								
81	0.6	0.77	-0.001	58	184	297			ADJ YW (Ratio)								
3%	60%	35%	35%	70%	15%	15%			1176 (100)								
CED	BW	WW	YW	DMI	YH	SC	DOC	HP	CEM	MLK	MW	MH	CW	MARB	RE	FAT	TEND
60	51	23	13	72	33	41	23	67	11	21	18	15	2	38	44	37	12

Dam has 6 BW@97, 6 WW@102, and 5 YW@104.

57 Henke Growth Fund 2178 ANGUS^{GS}

Bull | REG: 20457491 | TAG: 2178 | DOB: 8/31/22 **FALL BULL**

Basin Payweight 1682#
Deer Valley Growth Fund
 Deer Valley Rita 36113

Basin Payweight 006S#
 21AR O Lass 7017
 Plattermere Weigh Up K360#
 Deer Valley Rita 9457
 TC Total 410#
 R F Pride Lass 3131
 S A V New Year 5320
 Brockmere Pride 3251#

HF Total 1056
HF Henrietta Pride 4170#
 Brockmere Pride 8022

ADJ % IMF (Ratio)	2.2 (91)
ADJ RE (Ratio)	14.4 (101)
ADJ RIB (Ratio)	0.2 (100)

CED	BW	WW	YW	YH	SC	DOC	HP	MILK	ACT BW								
8	1.1	79	144	0.7	0.67	18	12	33	75								
35%	50%	15%	10%	30%	65%	55%	55%	15%	ADJ WW (Ratio)								
CW	MARB	RE	FAT	\$M	\$B	\$C			820 (103)								
78	0.47	0.76	0.019	53	173	277			ADJ YW (Ratio)								
4%	75%	35%	60%	80%	20%	25%			1145 (96)								
CED	BW	WW	YW	DMI	YH	SC	DOC	HP	CEM	MLK	MW	MH	CW	MARB	RE	FAT	TEND
9	25	37	18	58	78	58	46	60	18	27	19	67	14	65	55	52	70

Dam has 7 BW@96, 7 WW@102, and 7 YW@100.

58 Henke Growth Fund 2182 ET ANGUS^{GS}

Bull | REG: 20457488 | TAG: 2182 | DOB: 9/1/22 **FALL BULL**

Basin Payweight 1682#
Deer Valley Growth Fund
 Deer Valley Rita 36113

Basin Payweight 006S#
 21AR O Lass 7017
 Plattermere Weigh Up K360#
 Deer Valley Rita 9457
 Sitz Upward 307R#
 EXAR Barbara T020#
 TC Total 410#
 SydGen Pride 7165

EXAR Upshot 0562B#
HF Pride 4033
 HF Pride 1012#

ADJ % IMF (Ratio)	1.87 (66)
ADJ RE (Ratio)	13.1 (93)
ADJ RIB (Ratio)	0.14 (78)

CED	BW	WW	YW	YH	SC	DOC	HP	MILK	ACT BW								
1	4.5	88	159	1.1	1.29	24	14.8	31	89								
90%	95%	3%	2%	5%	25%	25%	25%	20%	ADJ WW (Ratio)								
CW	MARB	RE	FAT	\$M	\$B	\$C			897 (111)								
82	0.36	0.82	-0.014	62	171	284			ADJ YW (Ratio)								
3%	85%	25%	20%	55%	20%	20%			1238 (106)								
CED	BW	WW	YW	DMI	YH	SC	DOC	HP	CEM	MLK	MW	MH	CW	MARB	RE	FAT	TEND
91	98	9	2	87	12	33	9	32	42	45	5	9	2	81	26	15	47

Dam has 6 BW@97, 6 WW@102, and 5 YW@104.

59 Henke Growth Fund 2195 ANGUS^{GS}

Bull | REG: 20467279 | TAG: 2195 | DOB: 9/2/22 **FALL BULL**

Basin Payweight 1682#
Deer Valley Growth Fund
 Deer Valley Rita 36113

Basin Payweight 006S#
 21AR O Lass 7017
 Plattermere Weigh Up K360#
 Deer Valley Rita 9457
 SydGen 928 Destination 5420#
 Flying V Miss Pride 426
 H A Image Maker 0415#
 Turner K856 9124

Prairie Pride Next Step 2036#
HF Annie 9171
 Turner Image Maker 85#

ADJ % IMF (Ratio)	2.62 (108)
ADJ RE (Ratio)	15.5 (109)
ADJ RIB (Ratio)	0.18 (90)

CED	BW	WW	YW	YH	SC	DOC	HP	MILK	ACT BW								
11	1	82	146	0.5	0.62	21	15.6	29	79								
15%	45%	10%	10%	55%	70%	40%	20%	30%	ADJ WW (Ratio)								
CW	MARB	RE	FAT	\$M	\$B	\$C			814 (103)								
70	0.51	0.85	0.001	81	166	296			ADJ YW (Ratio)								
10%	70%	25%	35%	10%	25%	15%			1212 (102)								
CED	BW	WW	YW	DMI	YH	SC	DOC	HP	CEM	MLK	MW	MH	CW	MARB	RE	FAT	TEND
5	12	33	24	68	89	53	26	20	24	58	65	84	35	49	53	59	79

Dam has 2 WW@107 and 2 YW@105.



60 Henke Growth Fund 2220 **ANGUS^{GS}**
FALL BULL

Bull | REG: 20457475 | TAG: 2220 | DOB: 9/5/22
 Basin Payweight 1682#
Deer Valley Growth Fund
 Deer Valley Rita 36113
 SS All in 4914
THM Rita All In 773
 THM Rita Granite 386-573

CED	BW	WW	YW	YH	SC	DOC	HP	MILK	ACT BW								
6	2.7	91	163	0.8	1.04	27	12.8	36	74								
55%	80%	2%	2%	25%	40%	15%	45%	5%									
CW	MARB	RE	FAT	\$M	\$B	\$C											
85	0.4	0.85	0.024	57	173	281											
2%	80%	25%	65%	70%	20%	25%											
CED	BW	WW	YW	DMI	YH	SC	DOC	HP	CEM	MLK	MW	MH	CW	MARB	RE	FAT	TEND
24	53	4	3	89	22	43	12	53	32	12	3	8	2	79	38	66	81

Growthy and easy fleshing bull, just like all his paternal brothers in the sale.

62 Henke Growth Fund 2227 **ANGUS^{GS}**
FALL BULL

Bull | REG: 20467274 | TAG: 2227 | DOB: 9/5/22
 Basin Payweight 1682#
Deer Valley Growth Fund
 Deer Valley Rita 36113
 HA Cowboy Up 5405#
HF Miss Pride 8183
 HF Miss Pride 5198#

CED	BW	WW	YW	YH	SC	DOC	HP	MILK	ACT BW								
2	3.5	105	177	0.8	0.81	22	12.4	22	83								
85%	95%	1%	1%	25%	55%	35%	50%	80%									
CW	MARB	RE	FAT	\$M	\$B	\$C											
80	0.23	0.77	0.021	51	152	248											
3%	95%	35%	65%	85%	40%	55%											
CED	BW	WW	YW	DMI	YH	SC	DOC	HP	CEM	MLK	MW	MH	CW	MARB	RE	FAT	TEND
71	78	1	12	79	52	57	12	41	31	89	1	9	6	75	37	84	27

Dam has 3 WW@103 and 3 YW@104.

61 Henke Colin Growth Fund 2221 **ANGUS^{GS}**
FALL BULL

Bull | REG: 20467285 | TAG: 2221 | DOB: 9/5/22
 Basin Payweight 1682#
Deer Valley Growth Fund
 Deer Valley Rita 36113
 HARB Hindquarter 473 JH
HF Colin's Anna 9230
 HF Colin's Anna 5203#

CED	BW	WW	YW	YH	SC	DOC	HP	MILK	ACT BW								
7	3.3	84	144	0.7	0.67	28	19.5	25	85								
45%	90%	10%	10%	30%	65%	10%	2%	60%									
CW	MARB	RE	FAT	\$M	\$B	\$C											
65	0.64	0.58	0.055	81	152	278											
20%	55%	60%	95%	10%	40%	25%											
CED	BW	WW	YW	DMI	YH	SC	DOC	HP	CEM	MLK	MW	MH	CW	MARB	RE	FAT	TEND
24	65	13	26	93	36	42	6	2	24	73	13	40	21	32	73	99	25

Improves fertility and top 10% Claw EPD.

63 Henke Growth Fund 2246 **ANGUS^{GS}**
FALL BULL

Bull | REG: 20446331 | TAG: 2246 | DOB: 9/8/22
 Basin Payweight 1682#
Deer Valley Growth Fund
 Deer Valley Rita 36113
 Flying V Transformer
HF Pride Lass 8185#
 HF Pride Lass 4153

CED	BW	WW	YW	YH	SC	DOC	HP	MILK	ACT BW								
7	2.4	89	161	0.8	0.61	18	14.4	35	75								
45%	75%	3%	2%	25%	70%	55%	30%	10%									
CW	MARB	RE	FAT	\$M	\$B	\$C											
81	0.23	0.79	-0.006	57	157	261											
3%	95%	30%	25%	70%	35%	40%											
CED	BW	WW	YW	DMI	YH	SC	DOC	HP	CEM	MLK	MW	MH	CW	MARB	RE	FAT	TEND
25	45	14	6	99	32	77	45	26	65	22	16	48	7	89	38	24	50

Dam has 3 BW@92, 3 WW@106, and 3 YW@102.



**#2 WW EPD BULL
 IN THE SALE**

**LOT
 62**



64 Henke Growth Fund 2249 **ANGUS^{GS}**
FALL BULL

Bull | REG: 20467269 | TAG: 2249 | DOB: 9/8/22
 Basin Payweight 1682#
Deer Valley Growth Fund
 Deer Valley Rita 36113
 Connealy Cool 39L#
SydGen Forever Lady 7488
 SydGen Forever Lady 5527

Basin Payweight 006S#
 21AR O Lass 7017
 Plattemere Weigh Up K360#
 Deer Valley Rita 9457
 Connealy Heat 0243#
 JMc Jeena Allie 8345 5399#
 EXAR Denver 2002B#
 SydGen Forever Lady 2764

CED	BW	WW	YW	YH	SC	DOC	HP	MILK	ACT BW								
11	1.1	84	145	1	0.87	27	18.9	31	87								
15%	50%	10%	10%	10%	55%	15%	2%	20%	ADJ WW (Ratio)								
CW	MARB	RE	FAT	\$M	\$B	\$C	807 (102)										
69	0.79	0.63	0.064	90	171	312	ADJ YW (Ratio)										
15%	40%	55%	95%	3%	20%	10%	1153 (97)										
CED	BW	WW	YW	DMI	YH	SC	DOC	HP	CEM	MLK	MW	MH	CW	MARB	RE	FAT	TEND
9	29	25	18	84	29	31	15	3	48	42	35	34	20	19	81	99	79

Keep the daughters for more fertility.

65 Henke Growth Fund 2256 **ANGUS^{GS}**
FALL BULL

Bull | REG: 20457498 | TAG: 2256 | DOB: 9/9/22
 Basin Payweight 1682#
Deer Valley Growth Fund
 Deer Valley Rita 36113
 HF Xplode 4010
HF Royal Queen 6232
 HF Royal Queen 3126

Basin Payweight 006S#
 21AR O Lass 7017
 Plattemere Weigh Up K360#
 Deer Valley Rita 9457
 A A R Ten X 7008 S A#
 Turner Image Maker 85#
 Poss Total Impact 745#
 SydGen Royal Queen 0157

CED	BW	WW	YW	YH	SC	DOC	HP	MILK	ACT BW								
8	-0.4	73	129	0.6	1.13	15	9.3	29	79								
35%	20%	25%	25%	40%	35%	70%	85%	30%	ADJ WW (Ratio)								
CW	MARB	RE	FAT	\$M	\$B	\$C	790 (100)										
57	0.87	0.59	0.05	54	168	272	ADJ YW (Ratio)										
35%	30%	60%	90%	80%	25%	30%	1057 (89)										
CED	BW	WW	YW	DMI	YH	SC	DOC	HP	CEM	MLK	MW	MH	CW	MARB	RE	FAT	TEND
16	6	30	36	35	53	35	47	80	20	49	23	36	22	30	80	99	74

Dam has 3 BW@96 and 3 WW@113.

66 Henke Growth Fund 2273 **ANGUS^{GS}**
FALL BULL

Bull | REG: 20457495 | TAG: 2273 | DOB: 9/18/22
 Basin Payweight 1682#
Deer Valley Growth Fund
 Deer Valley Rita 36113
 Connealy Black Granite#
Pitts Blackcap 6103
 Pitts Blackcap 1167

Basin Payweight 006S#
 21AR O Lass 7017
 Plattemere Weigh Up K360#
 Deer Valley Rita 9457
 Connealy Consensus 7229#
 Eura Elga of Conanga 9109#
 Connealy Forward#
 Coleman Blackcap 574

CED	BW	WW	YW	YH	SC	DOC	HP	MILK	ACT BW								
13	-0.2	70	133	0.5	1.95	20	11.7	34	75								
10%	20%	30%	20%	55%	4%	45%	60%	10%	ADJ WW (Ratio)								
CW	MARB	RE	FAT	\$M	\$B	\$C	767 (97)										
73	0.11	0.85	0.037	74	155	275	ADJ YW (Ratio)										
10%	95%	25%	80%	25%	35%	30%	1138 (96)										
CED	BW	WW	YW	DMI	YH	SC	DOC	HP	CEM	MLK	MW	MH	CW	MARB	RE	FAT	TEND
16	40	39	10	77	49	5	33	37	13	12	55	44	7	94	46	77	81

Easy calving daughters, ranks in top 2% for CEM.

67 Henke Growth Fund 2288 **ANGUS^{GS}**
FALL BULL

Bull | REG: 20684297 | TAG: 2288 | DOB: 9/23/22
 Deer Valley Growth Fund
HF Growth Fund 0058
 HF Athena 8025
 S S Niagara Z29#
HF Miss Niagara 7223
 HF Miss War Party 5138

Basin Payweight 1682#
 Deer Valley Rita 36113
 LD Capitalist 316#
 HF Athena 6089
 Hoover Dam#
 Jet S S X144
 Werner War Party 2417#
 HF Miss Destination 9043

CED	BW	WW	YW	YH	SC	DOC	HP	MILK	ACT BW								
10	0.4	69	119	0.4	0.53	28	11.3	35	70								
20%	35%	35%	40%	65%	75%	10%	65%	10%	ADJ WW (Ratio)								
CW	MARB	RE	FAT	\$M	\$B	\$C	783 (99)										
56	0.56	0.9	0.056	78	148	270	ADJ YW (Ratio)										
35%	65%	20%	95%	15%	45%	30%	1213 (102)										
CED	BW	WW	YW	DMI	YH	SC	DOC	HP	CEM	MLK	MW	MH	CW	MARB	RE	FAT	TEND
5	10	45	77	43	67	87	4	54	59	29	78	79	31	43	20	90	22

Improves disposition and maternal traits.

68 Henke Growth Fund 3047 **ANGUS**^{GS}

Bull | REG: 20700478 | TAG: 3047 | DOB: 1/30/23

Basin Payweight 1682#
Deer Valley Growth Fund
 Deer Valley Rita 36113

Thomas Up River 1614
HF Lynn 6141
 HF Lynn 3181#

Basin Payweight 006S#
 21AR O Lass 7017
 Plattemere Weigh Up K360#
 Deer Valley Rita 9457
 Sitz Upward 307R#
 Thomas Carol 7595
 HF Destination 7055
 H F Miss Neutron 6062

ADJ % IMF (Ratio)	2.9 (84)
ADJ RE (Ratio)	13.1 (87)
ADJ RIB (Ratio)	0.25 (69)

CED	BW	WW	YW	YH	SC	DOC	HP	MILK	ACT BW
3	2.8	89	156	1	1.14	28	13.9	32	78
75%	85%	3%	3%	10%	35%	10%	35%	15%	
CW	MARB	RE	FAT	\$M	\$B	\$C			
79	0.35	0.42	0.008	82	160	290			
4%	85%	85%	45%	10%	30%	20%			
ADJ WW (Ratio)							732 (100)		
ADJ YW (Ratio)							1223 (97)		

CED	BW	WW	YW	DMI	YH	SC	DOC	HP	CEM	MLK	MW	MH	CW	MARB	RE	FAT	TEND
51	70	4	6	85	10	45	3	23	18	33	10	11	4	73	81	57	2

Dam has 5 BW@97 and 5 WW@102.



69 Henke Growth Fund 3049 **ANGUS**^{GS}

Bull | REG: 20700480 | TAG: 3049 | DOB: 1/30/23

Basin Payweight 1682#
Deer Valley Growth Fund
 Deer Valley Rita 36113

Casino Bomber N33#
HF Annie 9010
 Turner Image Maker 85#

Basin Payweight 006S#
 21AR O Lass 7017
 Plattemere Weigh Up K360#
 Deer Valley Rita 9457
 KM Broken Bow 002#
 Casino Annie K48#
 H A Image Maker 0415#
 Turner K856 9124

ADJ % IMF (Ratio)	2.7 (78)
ADJ RE (Ratio)	16.8 (111)
ADJ RIB (Ratio)	0.35 (97)

CED	BW	WW	YW	YH	SC	DOC	HP	MILK	ACT BW
3	3.5	95	168	0.7	0.43	25	9.4	27	82
75%	95%	1%	1%	30%	80%	20%	80%	45%	
CW	MARB	RE	FAT	\$M	\$B	\$C			
92	0.39	0.73	0.055	46	176	274			
1%	80%	40%	95%	90%	15%	30%			
ADJ WW (Ratio)							693 (95)		
ADJ YW (Ratio)							1341 (107)		

CED	BW	WW	YW	DMI	YH	SC	DOC	HP	CEM	MLK	MW	MH	CW	MARB	RE	FAT	TEND
59	82	4	4	96	37	78	12	84	83	76	6	35	5	72	85	97	46

Tons of growth and red meat yield.



Reference Sire • Deer Valley Growth Fund

14,357 BW's recorded
11,492 WW's recorded
3,422 scans
1,054 foot scores
11,761 DNA scores

70 Henke Growth Fund 3063 **ANGUS**^{GS}

Bull | REG: 20700486 | TAG: 3063 | DOB: 2/2/23

Basin Payweight 1682#
Deer Valley Growth Fund
 Deer Valley Rita 36113

HF Southside 6139
HF Pride 9079
 HF Pride 9032

Basin Payweight 006S#
 21AR O Lass 7017
 Plattemere Weigh Up K360#
 Deer Valley Rita 9457
 K C F Bennett Southside#
 HF Henrietta Pride 4170#
 TC Total 410#
 Brockmere Pride 3251#

ADJ % IMF (Ratio)	2.71 (78)
ADJ RE (Ratio)	15.9 (105)
ADJ RIB (Ratio)	0.32 (89)

CED	BW	WW	YW	YH	SC	DOC	HP	MILK	ACT BW
2	3.8	96	162	1	1.69	21	16.4	25	88
85%	95%	1%	2%	10%	10%	40%	15%	60%	
CW	MARB	RE	FAT	\$M	\$B	\$C			
71	0.27	0.82	0.034	78	142	262			
10%	90%	25%	80%	15%	55%	40%			
ADJ WW (Ratio)							721 (99)		
ADJ YW (Ratio)							1246 (99)		

CED	BW	WW	YW	DMI	YH	SC	DOC	HP	CEM	MLK	MW	MH	CW	MARB	RE	FAT	TEND
42	56	3	20	87	19	10	24	5	36	80	20	24	13	82	27	71	60

Dam has 3 WW@103 and 2 YW@105.

Percentile Rankings for EPDS

As we speak about how a bull ranks in the breed for an EPD percentile rank the lower the number the better. As of this sale book that is out of a pool of 313,535 non parent Angus bulls.

The traits and numbers at the bottom of each lot is the DNA Score for that trait. Lower number is more favorable.

watch and bid online

DVAuction
 Broadcasting Real-Time Auctions

71 Henke Dynamic 2119 **ANGUS^{GS}**
Bull | REG: 20457485 | TAG: 2119 | DOB: 8/22/22 **FALL BULL**

Deer Valley Growth Fund Basin Payweight 1682#
B A R Dynamic Deer Valley Rita 36113
 B A R Blackcap 7235-B0048 Three Trees Xceptional B0048
 MFP Manning 750 Quaker Hill Manning 4EX9
HF Lucy 0248 MFP Top Rita 550#
 HF Lucy 7174 LD Capitalist 316#
 HF Lucy 5160#

ADJ % IMF (Ratio)	1.44 (59)
ADJ RE (Ratio)	14.4 (101)
ADJ RIB (Ratio)	0.24 (120)

CED	BW	WW	YW	YH	SC	DOC	HP	MILK	ACT BW
8	0.6	80	142	0.2	1.28	19	15.8	28	61
35%	35%	10%	10%	85%	25%	50%	15%	40%	
CW	MARB	RE	FAT	\$M	\$B	\$C			724 (91)
56	0.6	0.68	0.021	74	153	272			ADJ YW (Ratio)
35%	60%	45%	65%	25%	40%	30%			1130 (95)

CED	BW	WW	YW	DMI	YH	SC	DOC	HP	CEM	MLK	MW	MH	CW	MARB	RE	FAT	TEND
19	42	11	16	73	78	28	22	17	45	56	20	90	23	55	47	73	62

Top 15% Claw EPD.

72 Henke Dynamic 2125 **ANGUS^{GS}**
Bull | REG: 20446342 | TAG: 2125 | DOB: 8/23/22 **FALL BULL**

Deer Valley Growth Fund Basin Payweight 1682#
B A R Dynamic Deer Valley Rita 36113
 B A R Blackcap 7235-B0048 Three Trees Xceptional B0048
 Mead Perseverance R1266 Plattermere Weigh Up K360#
HF Pride Lass 0199 Mead Miss Marathon L835#
 HF Pride Lass 4153 HF Miss Neutron 6047
 Werner War Party 2417#

ADJ % IMF (Ratio)	2.89 (109)
ADJ RE (Ratio)	13.2 (101)
ADJ RIB (Ratio)	0.15 (100)

CED	BW	WW	YW	YH	SC	DOC	HP	MILK	ACT BW
13	-1.1	74	134	0.8	0.64	17	16.9	26	60
10%	10%	25%	20%	25%	70%	60%	10%	55%	
CW	MARB	RE	FAT	\$M	\$B	\$C			658 (100)
47	1.01	0.48	0.021	55	156	257			ADJ YW (Ratio)
60%	20%	75%	65%	75%	35%	45%			1095 (98)

CED	BW	WW	YW	DMI	YH	SC	DOC	HP	CEM	MLK	MW	MH	CW	MARB	RE	FAT	TEND
1	2	50	21	56	60	66	65	9	16	71	10	43	62	14	79	52	32

More fertility, keep the daughters.

73 Henke Dynamic 2143 **ANGUS^{GS}**
Bull | REG: 20446336 | TAG: 2143 | DOB: 8/25/22 **FALL BULL**

Deer Valley Growth Fund Basin Payweight 1682#
B A R Dynamic Deer Valley Rita 36113
 B A R Blackcap 7235-B0048 Three Trees Xceptional B0048
 MFP Manning 750 Quaker Hill Manning 4EX9
HF Miss Manning 0241 MFP Top Rita 550#
 HF Miss Homestead 7006 K C F Bennett Homestead#
 HF Miss Platinum 5006#

ADJ % IMF (Ratio)	1.76 (67)
ADJ RE (Ratio)	13.3 (102)
ADJ RIB (Ratio)	0.14 (93)

CED	BW	WW	YW	YH	SC	DOC	HP	MILK	ACT BW
11	-0.1	82	146	1.3	1.14	18	18.7	33	61
15%	25%	10%	10%	2%	35%	55%	3%	15%	
CW	MARB	RE	FAT	\$M	\$B	\$C			705 (107)
78	0.62	0.89	0.016	60	181	295			ADJ YW (Ratio)
4%	55%	20%	55%	65%	15%	15%			1124 (101)

CED	BW	WW	YW	DMI	YH	SC	DOC	HP	CEM	MLK	MW	MH	CW	MARB	RE	FAT	TEND
24	47	14	7	81	2	28	15	2	21	22	4	12	3	58	19	68	51

Increases frame and performance but keeps the fertility.

74 Henke Dynamic 2156 **ANGUS^{GS}**
Bull | REG: 20446333 | TAG: 2156 | DOB: 8/27/22 **FALL BULL**

Deer Valley Growth Fund Basin Payweight 1682#
B A R Dynamic Deer Valley Rita 36113
 B A R Blackcap 7235-B0048 Three Trees Xceptional B0048
 HF Googol 3002 SydGen Googol
HF Kelly 0265 Stucky Eisa Erica 1311#
 HF Kelly 4125# PA Safeguard 021#
 HF Kelly 2143

ADJ % IMF (Ratio)	3.45 (131)
ADJ RE (Ratio)	12.9 (98)
ADJ RIB (Ratio)	0.18 (120)

CED	BW	WW	YW	YH	SC	DOC	HP	MILK	ACT BW
6	1.7	74	127	0.8	0.74	28	14.8	31	71
55%	65%	25%	25%	25%	60%	10%	25%	20%	
CW	MARB	RE	FAT	\$M	\$B	\$C			634 (96)
53	1.19	0.73	0.004	72	183	309			ADJ YW (Ratio)
45%	10%	40%	40%	30%	15%	10%			1088 (97)

CED	BW	WW	YW	DMI	YH	SC	DOC	HP	CEM	MLK	MW	MH	CW	MARB	RE	FAT	TEND
14	22	24	37	29	20	68	10	26	85	25	44	41	25	6	54	48	59

Balanced trait bull.



Reference Sire • B A R Dynamic

A Whole Lot of EPDs

The American Angus Association reports 31 different EPDS and Index's on each animal. While we look at and utilize many of these to make more precise decisions we also understand that most of them are just too much for a bull sale catalog. You may see in some footnotes a reference to an EPD that's not listed. If you are interested in any more data that is note reported here feel free to visit www.Angus.org and type in the bull's registration number in the upper right hand corner of the web page.

75 Henke Dynamic 2157 **ANGUS^{GS}**
FALL BULL

Bull | REG: 20446338 | TAG: 2157 | DOB: 8/28/22
 Deer Valley Growth Fund Basin Payweight 1682#
B A R Dynamic Deer Valley Rita 36113
 B A R Blackcap 7235-B0048 Three Trees Xceptional B0048
 Kesslers Commodore 6516 B A R Blackcap 3683-745
HF Lynn 0219 Connealy Comrade 1385#
 HF Lynn 8198 Kesslers Rainbow 0595
 LD Capitalist 316#
 HF Lynn 3181#

CED	BW	WW	YW	YH	SC	DOC	HP	MILK	ACT BW
12	-0.4	91	159	1	1.3	23	17	29	72
10%	20%	2%	2%	10%	25%	30%	10%	30%	
CW	MARB	RE	FAT	\$M	\$B	\$C			
79	0.79	0.36	0.078	76	171	298			
4%	40%	90%	95%	20%	20%	15%			

ADJ % IMF (Ratio)	3.02 (124)
ADJ RE (Ratio)	12.1 (85)
ADJ RIB (Ratio)	0.19 (95)

Excellent growthy bull with high heifer pregnancy.



76 Henke Dynamic 2194 **ANGUS^{GS}**
FALL BULL

Bull | REG: 20457489 | TAG: 2194 | DOB: 9/2/22
 Deer Valley Growth Fund Basin Payweight 1682#
B A R Dynamic Deer Valley Rita 36113
 B A R Blackcap 7235-B0048 Three Trees Xceptional B0048
 TC Total 410# B A R Blackcap 3683-745
HF Kelly 4061 Bon View New Design 208#
 H F Miss Choice Plus 4052 TC Erica Eileen 2047
 R C C Kelly 923 RCC Choice 152

CED	BW	WW	YW	YH	SC	DOC	HP	MILK	ACT BW
10	-1	77	137	0.5	1.22	20	13	28	58
20%	10%	15%	15%	55%	30%	45%	45%	40%	
CW	MARB	RE	FAT	\$M	\$B	\$C			
46	0.65	0.63	0.022	66	142	250			
60%	55%	55%	65%	45%	55%	50%			

ADJ % IMF (Ratio)	2.52 (110)
ADJ RE (Ratio)	13.8 (99)
ADJ RIB (Ratio)	0.23 (96)

Dam has 6 BW@91, and 6 WW@102.



**3/4 Brother to Lot 76
 Henke Growth Fund
 1226
 sold to Marion & David Campbell
 in 2023**



**3/4 Brother to Lot 76
 HF Growth Fund 0204
 sold to Marion & David Campbell
 in 2022**

77 Henke Dynamic 2232 **ANGUS^{GS}**
FALL BULL

Bull | REG: 20467273 | TAG: 2232 | DOB: 9/5/22
 Deer Valley Growth Fund Basin Payweight 1682#
B A R Dynamic Deer Valley Rita 36113
 B A R Blackcap 7235-B0048 Three Trees Xceptional B0048
 Connealy Blackhawk 6198# B A R Blackcap 3683-745
HF Blackbird 8176 Connealy Armory#
 HF Blackbird 3125 Precious of Conanga 380X#
 HF Miss Blackbird 8211 TC Total 410#

CED	BW	WW	YW	YH	SC	DOC	HP	MILK	ACT BW
10	-0.2	90	151	0.6	0.6	23	14.8	22	70
20%	20%	3%	5%	40%	70%	30%	25%	80%	
CW	MARB	RE	FAT	\$M	\$B	\$C			
57	1.08	0.9	0.068	68	163	279			
35%	15%	20%	95%	40%	30%	25%			

ADJ % IMF (Ratio)	3.32 (137)
ADJ RE (Ratio)	14.7 (104)
ADJ RIB (Ratio)	0.29 (145)

Dam has 3 BW@97, 3 WW@102, and 3 YW@102.



surpass sons



**Donor Dam of Lot 78
Smith Valley Blackbird
9002**



**Donor Dam of Lot 79-80
Pine View Rita E004**



LOT
79

80 Henke Surpass 3411 ET ANGUS^{GS}

Bull | REG: 20811651 | TAG: 3411 | DOB: 2/4/23

TEX Playbook 5437# Basin Payweight 1682#
BJ Surpass Rita 1C43 of 9M26 Complete
 BJ Prophet 5275 G A R Prophet#
 Mill Brae Identified 4031# BJ Complete 1165
Pine View Rita E004 Koupals B&B Identity#
 Pine View Rita B043 Mill Brae Pro Blackcap 1092
 PA Prowess 202
 Pine View Rita Z004

ADJ % IMF (Ratio) **2.93** (94)
 ADJ RE (Ratio) **16** (107)
 ADJ RIB (Ratio) **0.32** (119)

CED	BW	WW	YW	YH	SC	DOC	HP	MILK	ACT BW								
14	-0.5	70	123	0.3	1.02	29	13.7	37	82								
4%	20%	30%	35%	75%	40%	10%	35%	4%	ADJ WW (Ratio)								
									688 (100)								
CW	MARB	RE	FAT	\$M	\$B	\$C	ADJ YW (Ratio)										
54	0.78	0.9	0.015	93	153	291	1205 (100)										
40%	40%	20%	55%	2%	40%	20%											
CED	BW	WW	YW	DMI	YH	SC	DOC	HP	CEM	MLK	MW	MH	CW	MARB	RE	FAT	TEND
16	21	40	39	62	78	45	11	16	61	12	80	64	44	32	15	34	88

Keep the daughters back on these two brothers.

78 Henke Surpass 2166 ET ANGUS^{GS}

Bull | REG: 20457505 | TAG: 2166 | DOB: 8/30/22

TEX Playbook 5437# Basin Payweight 1682#
BJ Surpass Rita 1C43 of 9M26 Complete
 BJ Prophet 5275 G A R Prophet#
 SydGen Enhance# BJ Complete 1165
Smith Valley Blackbird 9002 SydGen Exceed 3223#
 Vintage Blackbird 7001 SydGen Rita 2618
 EXAR Stud 4658B#
 V A R Blackbird 3153

ADJ % IMF (Ratio) **2.06** (73)
 ADJ RE (Ratio) **12.6** (89)
 ADJ RIB (Ratio) **0.18** (100)

CED	BW	WW	YW	YH	SC	DOC	HP	MILK	ACT BW								
11	0.9	81	133	0.8	0.64	29	16	24	87								
15%	45%	10%	20%	25%	70%	10%	15%	70%	ADJ WW (Ratio)								
									804 (99)								
CW	MARB	RE	FAT	\$M	\$B	\$C	ADJ YW (Ratio)										
54	0.36	0.38	0.005	90	125	252	1130 (96)										
40%	85%	85%	40%	3%	75%	50%											
CED	BW	WW	YW	DMI	YH	SC	DOC	HP	CEM	MLK	MW	MH	CW	MARB	RE	FAT	TEND
21	24	15	35	72	39	64	6	6	41	76	41	32	27	75	86	68	41

Maternal improver who ranks in top 1% for Angle EPD.

79 Henke Surpass 2192 ET ANGUS^{GS}

Bull | REG: 20447672 | TAG: 2192 | DOB: 9/2/22

TEX Playbook 5437# Basin Payweight 1682#
BJ Surpass Rita 1C43 of 9M26 Complete
 BJ Prophet 5275 G A R Prophet#
 Mill Brae Identified 4031# BJ Complete 1165
Pine View Rita E004 Koupals B&B Identity#
 Pine View Rita B043 Mill Brae Pro Blackcap 1092
 PA Prowess 202
 Pine View Rita Z004

ADJ % IMF (Ratio) **2.06** (73)
 ADJ RE (Ratio) **14.4** (102)
 ADJ RIB (Ratio) **0.1** (56)

CED	BW	WW	YW	YH	SC	DOC	HP	MILK	ACT BW								
11	1	71	126	0.3	0.87	28	17	28	80								
15%	45%	30%	30%	75%	55%	10%	10%	40%	ADJ WW (Ratio)								
									679 (84)								
CW	MARB	RE	FAT	\$M	\$B	\$C	ADJ YW (Ratio)										
47	0.87	0.82	-0.023	107	162	317	1036 (88)										
60%	30%	25%	15%	1%	30%	10%											
CED	BW	WW	YW	DMI	YH	SC	DOC	HP	CEM	MLK	MW	MH	CW	MARB	RE	FAT	TEND
42	46	26	28	51	64	54	15	2	55	57	66	57	35	22	31	35	54

One of the top \$M bulls in the sale. Foot improver as well.

80a Henke Surpass 2120 ANGUS^{GS}

Bull | REG: 20447544 | TAG: 2120 | DOB: 8/22/22

TEX Playbook 5437# Basin Payweight 1682#
BJ Surpass Rita 1C43 of 9M26 Complete
 BJ Prophet 5275 G A R Prophet#
 Bar R Jet Black 5063# BJ Complete 1165
HF Annie 0258 Connealy Black Granite#
 HF Annie 7159# Bar R Iris Anita 0113
 Turner Image Maker 85# Connealy Armory#

ADJ % IMF (Ratio) **2.87** (118)
 ADJ RE (Ratio) **13.1** (92)
 ADJ RIB (Ratio) **0.14** (70)

CED	BW	WW	YW	YH	SC	DOC	HP	MILK	ACT BW								
13	0.2	89	143	0.9	0.6	22	12.9	33	72								
10%	30%	3%	10%	15%	70%	35%	45%	15%	ADJ WW (Ratio)								
									852 (107)								
CW	MARB	RE	FAT	\$M	\$B	\$C	ADJ YW (Ratio)										
80	0.36	0.64	0.018	84	156	286	1218 (102)										
3%	85%	55%	60%	10%	35%	20%											
CED	BW	WW	YW	DMI	YH	SC	DOC	HP	CEM	MLK	MW	MH	CW	MARB	RE	FAT	TEND
16	43	8	29	81	18	67	30	12	82	25	45	22	2	76	22	52	64

Yearlings vs. Falls

With two calving seasons we can offer aged bulls and true yearlings. Because of the environment and length of time of feed the management of the two groups are very different. So, to compare weights from a fall vs spring born bull will not be accurate. As well we have 17 ET (embryo transplant) bulls in the sale, depending on their recipient dam the early weights of those cattle may vary from what their genetic potential is. We think we have developed these bulls to show their genetic ability without compromising feet, structure, or libido.

81 Henke Iconic 2155 ET **ANGUS** **FALL BULL**

Bull | REG: 20447591 | TAG: 2155 | DOB: 8/27/22
 Musgrave 316 Stunner#
DB Iconic G95
 DB Ms Discovery D13
 Deer Valley Growth Fund
Smith Valley Henrietta 9269
 SVA Henrietta Pride 6281

CED	BW	WW	YW	YH	SC	DOC	HP	MILK	ACT BW								
4	1.4	100	168	0.5	1.04	15	14.5	18	79								
70%	55%	1%	1%	55%	40%	70%	25%	95%									
CW	MARB	RE	FAT	\$M	\$B	\$C											
81	1.12	0.55	0.073	52	190	298			803 (100)								
3%	15%	65%	95%	85%	10%	15%			ADJ YW (Ratio) 1278 (100)								
CED	BW	WW	YW	DMI	YH	SC	DOC	HP	CEM	MLK	MW	MH	CW	MARB	RE	FAT	TEND
46	39	4	11	90	85	34	59	42	29	80	8	66	7	12	69	98	75

Superior growth bull out of a great donor.



Maternal Brother to Lot 81
Henke Regiment 1240
 sold to Blankenship & Sykes in
 2023



Maternal Brother to Lot 85
Henke Growth Fund 1053
 sold to Crooked Creek Angus in
 2023

82 Henke Optimum 2112 **ANGUS** **FALL BULL**

Bull | REG: 20461979 | TAG: 2112 | DOB: 8/20/22
 Deer Valley Growth Fund
Deer Valley Optimum 9246
 G A R Progress 830
 Connealy Armory#
HF Miss Armory 0165
 HF Miss Frontman 6143

CED	BW	WW	YW	YH	SC	DOC	HP	MILK	ACT BW								
9	1.2	91	162	1.1	0.68	22	18.2	43	71								
30%	50%	2%	2%	5%	65%	35%	4%	1%									
CW	MARB	RE	FAT	\$M	\$B	\$C											
78	1.01	0.59	0.064	65	182	301			883 (111)								
4%	20%	60%	95%	50%	15%	15%			ADJ YW (Ratio) 1221 (102)								
CED	BW	WW	YW	DMI	YH	SC	DOC	HP	CEM	MLK	MW	MH	CW	MARB	RE	FAT	TEND
19	30	9	6	95	23	48	21	3	36	1	16	13	9	27	73	99	76

More growth, more fertility, more milk.

83 Henke Optimum 2266 **ANGUS** **FALL BULL**

Bull | REG: 20461981 | TAG: 2266 | DOB: 9/14/22
 Deer Valley Growth Fund
Deer Valley Optimum 9246
 G A R Progress 830
 Pine View Alpha
HF Forever Lady 0120
 HF Forever Lady 6127

CED	BW	WW	YW	YH	SC	DOC	HP	MILK	ACT BW								
17	-1.6	63	124	0.4	0.49	28	15.1	35	62								
1%	10%	55%	30%	65%	75%	10%	20%	10%									
CW	MARB	RE	FAT	\$M	\$B	\$C											
61	1.13	0.54	0.07	83	186	324			717 (90)								
25%	15%	70%	95%	10%	10%	5%			ADJ YW (Ratio) 1109 (93)								
CED	BW	WW	YW	DMI	YH	SC	DOC	HP	CEM	MLK	MW	MH	CW	MARB	RE	FAT	TEND
1	3	82	46	58	70	71	12	31	13	10	92	76	38	11	71	95	76

Balanced trait high indexing bull.

84 Henke Capitalist 2280 **ANGUS** **FALL BULL**

Bull | REG: 20467265 | TAG: 2280 | DOB: 9/21/22
 LD Capitalist 316#
HF Capitalist 7165
 HF Emma 5184#
 HF All Around 9002
HF Pride Lass 2120#
 HF Pride Lass 9131

CED	BW	WW	YW	YH	SC	DOC	HP	MILK	ACT BW								
4	3.4	82	134	1.1	0.15	20	15.6	18	83								
70%	90%	10%	20%	5%	90%	45%	20%	95%									
CW	MARB	RE	FAT	\$M	\$B	\$C											
65	0.75	0.63	0.048	79	160	287			879 (111)								
20%	40%	55%	90%	15%	30%	20%			ADJ YW (Ratio) 1201 (101)								
CED	BW	WW	YW	DMI	YH	SC	DOC	HP	CEM	MLK	MW	MH	CW	MARB	RE	FAT	TEND
45	76	4	20	84	5	77	36	11	21	80	40	19	6	40	29	77	52

Dam has 9 BW@100 and 9 WW@103.

85 Henke Capitalist 2285 **ANGUS** **FALL BULL**

Bull | REG: 20467270 | TAG: 2285 | DOB: 9/22/22
 LD Capitalist 316#
HF Capitalist 7165
 HF Emma 5184#
 S S Niagara Z29#
HF Annie 8028
 HF Annie 6097#

CED	BW	WW	YW	YH	SC	DOC	HP	MILK	ACT BW								
3	2	76	133	0.8	1.45	31	12.5	27	83								
75%	70%	20%	20%	25%	20%	4%	50%	45%									
CW	MARB	RE	FAT	\$M	\$B	\$C											
66	0.81	0.66	-0.001	70	174	296			784 (99)								
15%	35%	50%	35%	30%	20%	15%			ADJ YW (Ratio) 1131 (95)								
CED	BW	WW	YW	DMI	YH	SC	DOC	HP	CEM	MLK	MW	MH	CW	MARB	RE	FAT	TEND
74	63	16	19	76	27	13	4	25	31	47	38	73	8	32	20	35	71

Tied for top Docility EPD bull in the sale.

henke fall bulls



86 Henke Magnitude 2129 ANGUS^{GS}

Bull | REG: 20457507 | TAG: 2129 | DOB: 8/24/22 FALL BULL

K C F Bennett Southside#
Mead Magnitude#
 Mead Primrose N198#
 Deer Valley Growth Fund
HF Henrietta Pride 9281
 SVA Henrietta Pride 6281

Nichols Extra K205#
 K C F Miss 208 S11#
 Plattermere Weigh Up K360#
 Mead Primrose K247#
 Basin Payweight 1682#
 Deer Valley Rita 36113
 V A R Discovery 2240#
 PF CC&7 Henrietta Pride 1044

CED	BW	WW	YW	YH	SC	DOC	HP	MILK	ACT BW
4	1.7	89	158	0.7	0.68	24	11.3	26	70
70%	65%	3%	2%	30%	65%	25%	65%	55%	ADJ WW (Ratio)
									794 (100)
									ADJ YW (Ratio)
									1207 (101)

CW	MARB	RE	FAT	\$M	\$B	\$C
68	0.47	0.77	-0.014	50	152	247
15%	75%	35%	20%	85%	40%	55%

CED	BW	WW	YW	DMI	YH	SC	DOC	HP	CEM	MLK	MW	MH	CW	MARB	RE	FAT	TEND
25	38	8	6	98	29	41	12	53	22	51	4	21	12	56	46	55	50

High powered cow family with high accuracy.

87 Henke Magnitude 2255 ANGUS^{GS}

Bull | REG: 20457503 | TAG: 2255 | DOB: 9/9/22 FALL BULL

K C F Bennett Southside#
Mead Magnitude#
 Mead Primrose N198#
 LD Capitalist 316#
HF Kelly 7225
 HF Kelly 5164

Nichols Extra K205#
 K C F Miss 208 S11#
 Plattermere Weigh Up K360#
 Mead Primrose K247#
 Connealy Capitalist 028#
 LD Dixie Erica 2053
 EXAR Powerhouse 2077B#
 HF Miss Kelly 0108

CED	BW	WW	YW	YH	SC	DOC	HP	MILK	ACT BW
3	3.1	89	153	0.7	0.51	29	12.4	34	82
75%	90%	3%	4%	30%	75%	10%	50%	10%	ADJ WW (Ratio)
									827 (104)
									ADJ YW (Ratio)
									1257 (105)

CW	MARB	RE	FAT	\$M	\$B	\$C
75	0.7	0.95	-0.013	70	176	298
10%	50%	15%	20%	35%	15%	15%

CED	BW	WW	YW	DMI	YH	SC	DOC	HP	CEM	MLK	MW	MH	CW	MARB	RE	FAT	TEND
61	83	2	9	97	21	63	5	85	48	21	13	15	4	29	22	61	49

Lots of big weaning ability in this bull.

88 Henke Magnitude 2259 ANGUS^{GS}

Bull | REG: 20457501 | TAG: 2259 | DOB: 9/10/22 FALL BULL

K C F Bennett Southside#
Mead Magnitude#
 Mead Primrose N198#
 LD Capitalist 316#
HF Miss Pride 7163#
 HF Miss Pride 5198#

Nichols Extra K205#
 K C F Miss 208 S11#
 Plattermere Weigh Up K360#
 Mead Primrose K247#
 Connealy Capitalist 028#
 LD Dixie Erica 2053
 HF Liberty 3127
 HF Miss Pride 3022

CED	BW	WW	YW	YH	SC	DOC	HP	MILK	ACT BW
12	-1.5	68	117	0.4	0.47	27	13.8	25	72
10%	10%	40%	45%	65%	80%	15%	35%	60%	ADJ WW (Ratio)
									751 (95)
									ADJ YW (Ratio)
									1169 (98)

CW	MARB	RE	FAT	\$M	\$B	\$C
42	0.9	0.9	-0.023	78	152	275
70%	30%	20%	15%	15%	40%	30%

CED	BW	WW	YW	DMI	YH	SC	DOC	HP	CEM	MLK	MW	MH	CW	MARB	RE	FAT	TEND
4	2	26	55	67	58	65	4	26	30	45	39	49	32	28	16	36	43

Two generations of Pathfinder dams. Top ADJ RE Bull.

89 Henke Fair N Square 2173 ANGUS^{GS}

Bull | REG: 20462256 | TAG: 2173 | DOB: 8/30/22 FALL BULL

Woodhill Blueprint#
Myers Fair-N-Square M39
 Myers Miss Beauty M136
 EXAR Powerhouse 2077B#
HF Duchess 5046
 HF Duchess 2014

Connealy Confidence Plus#
 Woodhill Evergreen Z291-B233
 Connealy Thunder#
 Myers Miss Beauty M476#
 Connealy Consensus 7229#
 Exar June 7889
 TC Total 410#
 SydGen Duchess 7494

CED	BW	WW	YW	YH	SC	DOC	HP	MILK	ACT BW
2	2.6	78	140	1.1	2.09	27	15	41	89
85%	80%	15%	15%	5%	2%	15%	20%	1%	ADJ WW (Ratio)
									732 (92)
									ADJ YW (Ratio)
									1151 (96)

CW	MARB	RE	FAT	\$M	\$B	\$C
59	0.88	0.56	0.023	68	168	286
30%	30%	65%	65%	40%	25%	20%

CED	BW	WW	YW	DMI	YH	SC	DOC	HP	CEM	MLK	MW	MH	CW	MARB	RE	FAT	TEND
79	68	6	7	79	3	1	29	28	62	1	4	6	10	17	54	78	62

#1 SC EPD Bull in the sale.

90 Henke Rawhide 2118 ANGUS^{GS}

Bull | REG: 20457482 | TAG: 2118 | DOB: 8/22/22 FALL BULL

Poss Maverick
Poss Rawhide
 Poss Blueblood 6502
 Galaxy Expedition 6203
HF Robyn 0185
 HF Robyn 5140

Basin Payweight 1682#
 Poss Pride 5163
 Poss Easy Impact 0119
 Poss Blueblood 920
 V A R Discovery 2240#
 RHR Ruby of Tiffany 1111
 R B Tour Of Duty 177#
 HF Robyn 3180

CED	BW	WW	YW	YH	SC	DOC	HP	MILK	ACT BW
2	2.9	88	149	1.2	1.43	18	10.6	23	78
85%	85%	3%	5%	3%	20%	55%	70%	75%	ADJ WW (Ratio)
									807 (102)
									ADJ YW (Ratio)
									1186 (100)

CW	MARB	RE	FAT	\$M	\$B	\$C
71	0.65	0.71	0.009	43	166	258
10%	55%	40%	45%	95%	25%	45%

CED	BW	WW	YW	DMI	YH	SC	DOC	HP	CEM	MLK	MW	MH	CW	MARB	RE	FAT	TEND
66	58	11	8	92	21	10	49	37	71	70	4	8	17	32	28	19	11

Great cow family and lots of growth.

91 Henke Resilient 2186 **ANGUS^{GS}**
FALL BULL

Bull | REG: 20457509 | TAG: 2186 | DOB: 9/1/22

Sitz Stellar 726D#
Sitz Resilient 10208
 Sitz Miss Burgess 1856
 KB-Full Measure C40#
HF Dolly 9097
 Barstow Dolly WA D166

Mohnen Substantial 272#
 SITZ Pride 200B
 Sitz Top Game 561X#
 Sitz Miss Burgess 4381
 Plattermere Weigh Up K360#
 KB-Emma-Ten X-B02
 Barstow Cashman A24#
 Barstow Dolly WA B77

CED	BW	WW	YW	YH	SC	DOC	HP	MILK	ACT BW								
4	1.7	87	148	0.6	1.26	12	20.7	38	77								
70%	65%	4%	10%	40%	25%	80%	1%	3%	ADJ WW (Ratio)								
CW	MARB	RE	FAT	\$M	\$B	\$C	ADJ YW (Ratio)										
65	0.75	0.58	-0.032	88	158	293	1192 (100)										
20%	40%	60%	10%	4%	35%	15%											
CED	BW	WW	YW	DMI	YH	SC	DOC	HP	CEM	MLK	MW	MH	CW	MARB	RE	FAT	TEND
54	67	7	17	91	68	20	66	3	75	11	46	55	28	50	52	6	90

High performance and fertility improver.



Maternal Brother to Lot 91
Henke Signal 1011
 sold to Poor Folk farms in 2022



Full Brother to Lot 92
Henke Signal 1127
 sold to W.D. Richards in 2022

92 Henke Signal 3409 ET **ANGUS^{GS}**

Bull | REG: 20811867 | TAG: 3409 | DOB: 2/3/23

Basin Payweight 1682#
V A R Signal 7244
 PF CC&7 Henrietta Pride 1044
 G A R Missouri 5761
SydGen Forever Lady 6748
 SydGen Forever Lady 3068

Basin Payweight 006S#
 21AR O Lass 7017
 SydGen C C & 7#
 Sitz Henrietta Pride 643T
 MCC Daybreak#
 G A R 5050 New Design 1009
 SydGen Liberty GA 8627#
 SydGen Forever Lady 1059

CED	BW	WW	YW	YH	SC	DOC	HP	MILK	ACT BW								
7	1.1	85	141	0.8	0.87	30	14	28	89								
45%	50%	5%	10%	25%	55%	5%	30%	40%	ADJ WW (Ratio)								
CW	MARB	RE	FAT	\$M	\$B	\$C	ADJ YW (Ratio)										
74	0.44	1.05	-0.027	83	168	301	1212 (100)										
10%	75%	10%	10%	10%	25%	15%											
CED	BW	WW	YW	DMI	YH	SC	DOC	HP	CEM	MLK	MW	MH	CW	MARB	RE	FAT	TEND
14	12	13	21	79	29	47	3	18	35	42	27	20	4	70	10	4	94

Super balanced trait bull. Full Brothers lots 92-94.



93 Henke Signal 2168 ET **ANGUS^{GS}**
FALL BULL

Bull | REG: 20457499 | TAG: 2168 | DOB: 8/30/22

Basin Payweight 1682#
V A R Signal 7244
 PF CC&7 Henrietta Pride 1044
 G A R Missouri 5761
SydGen Forever Lady 6748
 SydGen Forever Lady 3068

Basin Payweight 006S#
 21AR O Lass 7017
 SydGen C C & 7#
 Sitz Henrietta Pride 643T
 MCC Daybreak#
 G A R 5050 New Design 1009
 SydGen Liberty GA 8627#
 SydGen Forever Lady 1059

CED	BW	WW	YW	YH	SC	DOC	HP	MILK	ACT BW								
6	2.1	78	142	1.2	0.84	19	12.3	20	79								
55%	70%	15%	10%	3%	55%	50%	50%	90%	ADJ WW (Ratio)								
CW	MARB	RE	FAT	\$M	\$B	\$C	ADJ YW (Ratio)										
72	0.26	1.04	-0.025	41	160	249	857 (106)										
10%	90%	10%	10%	95%	30%	50%	1196 (102)										
CED	BW	WW	YW	DMI	YH	SC	DOC	HP	CEM	MLK	MW	MH	CW	MARB	RE	FAT	TEND
64	63	11	2	95	3	56	32	25	61	79	2	1	4	89	8	4	95

Added frame bull.

94 Henke Signal 3407 ET **ANGUS^{GS}**

Bull | REG: 20811863 | TAG: 3407 | DOB: 2/2/23

Basin Payweight 1682#
V A R Signal 7244
 PF CC&7 Henrietta Pride 1044
 G A R Missouri 5761
SydGen Forever Lady 6748
 SydGen Forever Lady 3068

Basin Payweight 006S#
 21AR O Lass 7017
 SydGen C C & 7#
 Sitz Henrietta Pride 643T
 MCC Daybreak#
 G A R 5050 New Design 1009
 SydGen Liberty GA 8627#
 SydGen Forever Lady 1059

CED	BW	WW	YW	YH	SC	DOC	HP	MILK	ACT BW								
7	1.2	81	143	1	0.57	31	10.8	30	89								
45%	50%	10%	10%	10%	70%	4%	70%	25%	ADJ WW (Ratio)								
CW	MARB	RE	FAT	\$M	\$B	\$C	ADJ YW (Ratio)										
72	0.69	0.8	-0.042	55	172	278	689 (100)										
10%	50%	30%	3%	75%	20%	25%	1287 (100)										
CED	BW	WW	YW	DMI	YH	SC	DOC	HP	CEM	MLK	MW	MH	CW	MARB	RE	FAT	TEND
34	28	19	6	88	17	70	2	74	72	19	3	2	9	31	30	2	98

More frame and performance here.

henke bulls



95 Henke Deadwood 3041 ANGUS^{CS}

Bull | REG: 20700477 | TAG: 3041 | DOB: 1/28/23

Poss Maverick
Poss Deadwood
 Poss Ellunamere 399

Kesslers Commodore 6516
Henke Lynn 1066
 HF Lynn 8024

Basin Payweight 1682#
 Poss Pride 5163
 Poss Easy Impact 0119
 Poss Ellunmere 0170#
 Connealy Comrade 1385#
 Kesslers Rainbow 0595
 LD Capitalist 316#
 HF Lynn 6110

ADJ % IMF (Ratio)
3.59 (104)
ADJ RE (Ratio)
15.2 (101)
ADJ RIB (Ratio)
0.29 (81)

CED	BW	WW	YW	YH	SC	DOC	HP	MILK	ACT BW
12	-0.2	78	134	1	1.7	18	11.2	29	80
10%	20%	15%	20%	10%	10%	55%	65%	30%	ADJ WW (Ratio)
67	1.23	0.83	-0.024	71	201	332			752 (103)
15%	10%	25%	10%	30%	5%	3%			ADJ YW (Ratio)
									1267 (101)

Use for improved carcass value and weight.

96 Henke Home Town 3429 ET ANGUS^{CS}

Bull | REG: 20806078 | TAG: 3429 | DOB: 2/13/23

G A R Ashland#
G A R Home Town
 Chair Rock Sure Fire 6095

Poss Total Impact 745#
HF Brenna 3033
 Turner Objective 9087

G A R Early Bird
 Chair Rock Ambush 1018
 G A R Sure Fire#
 Chair Rock Progress 3005
 TC Total 410#
 Poss Blackcap 5116
 S S Objective T510 OT26#
 OO Design 1407 Max 0204

ADJ % IMF (Ratio)
6.5 (209)
ADJ RE (Ratio)
14.7 (99)
ADJ RIB (Ratio)
0.33 (122)

CED	BW	WW	YW	YH	SC	DOC	HP	MILK	ACT BW
8	0.8	61	120	0.5	-0.02	23	12.5	29	94
35%	40%	60%	40%	55%	95%	30%	50%	30%	ADJ WW (Ratio)
58	1.58	0.88	0.009	55	209	326			578 (100)
30%	2%	20%	45%	75%	3%	4%			ADJ YW (Ratio)
									1088 (100)

Dam has 6 WW@108 and 4 YW@106.

97 Henke Fair N Square 3059 ANGUS^{CS}

Bull | REG: 20700483 | TAG: 3059 | DOB: 2/1/23

Woodhill Blueprint#
Myers Fair-N-Square M39
 Myers Miss Beauty M136

SydGen FATE 2800#
HF Eisa Erica 5018#
 Stucky Eisa Erica 1311#

Connealy Confidence Plus#
 Woodhill Evergreen Z291-B233
 Connealy Thunder#
 Myers Miss Beauty M476#
 SydGen Trust 6228#
 SydGen Heroine 9808
 S A V Final Answer 0035#
 Stucky Eisa Erica 7428

ADJ % IMF (Ratio)
3.04 (88)
ADJ RE (Ratio)
16.2 (107)
ADJ RIB (Ratio)
0.39 (108)

CED	BW	WW	YW	YH	SC	DOC	HP	MILK	ACT BW
8	0.3	74	127	0.7	1.41	12	14.4	27	81
35%	30%	25%	20%	30%	20%	80%	30%	45%	ADJ WW (Ratio)
50	0.66	0.7	0.001	69	146	258			716 (98)
50%	50%	45%	35%	35%	50%	45%			ADJ YW (Ratio)
									1255 (100)

Dam has 7 WW@104 and 6 YW@105.

98 Henke Premium 3002 ANGUS^{CS}

Bull | REG: 20700464 | TAG: 3002 | DOB: 1/13/23

High Point Werner Cut Above
Pine View Premium
 Pine View Susanna C097#

Galaxy Detail 8546
Henke Miss Detail 1017
 HF Miss Achievement 9041

TC Cut Above 426
 High Point Eldorene 2046#
 Connealy In Focus 4925#
 SJH Complete of 353F 0100
 Diablo Deluxe 1104
 Galaxy Blackbird 4551
 Poss Achievement#
 HF Miss Straight Up 6018

ADJ % IMF (Ratio)
3.33 (96)
ADJ RE (Ratio)
14.5 (96)
ADJ RIB (Ratio)
0.25 (69)

CED	BW	WW	YW	YH	SC	DOC	HP	MILK	ACT BW
13	-2	79	140	0.9	1.21	26	17.8	27	66
10%	4%	15%	15%	15%	30%	20%	5%	45%	ADJ WW (Ratio)
61	1.01	0.83	0.011	64	176	292			714 (98)
25%	20%	25%	50%	50%	15%	20%			ADJ YW (Ratio)
									1157 (92)

Calving ease, growth, and carcass.

99 Henke Guarantee 2065 ANGUS^{CS}

Bull | REG: 20418282 | TAG: 2065 | DOB: 2/4/22

Connealy Payraise
Crawford Guarantee 9137
 Crawford Ms Armory D40

Sitz Investment 660Z#
Galaxy Blackbird 6114
 Galaxy Blackbird 2512

Basin Payweight 1682#
 Pride Fair of Conanga 351
 Connealy Armory#
 G A R New Day N2290
 Connealy Final Product#
 Sitz Ellunas Elite 656T#
 Hoover Dam#
 CCC Blackbird 1030

ADJ % IMF (Ratio)
3.94 (76)
ADJ RE (Ratio)
13.2 (88)
ADJ RIB (Ratio)
0.44 (107)

CED	BW	WW	YW	YH	SC	DOC	HP	MILK	ACT BW
5	1.4	85	151	0.2	0.47	20	13.5	25	76
60%	55%	5%	5%	85%	80%	45%	35%	60%	ADJ WW (Ratio)
55	0.32	0.35	0.059	75	119	229			642 (87)
40%	85%	90%	95%	25%	85%	75%			ADJ YW (Ratio)
									1271 (96)

Two-Year-Old Bull.



The Females

100 Henke Rita 3003 ANGUS^{CS}

Cow | REG: 20728223 | TAG: 3003 | DOB: 1/16/23

G A R Advance
KW 667 Advance 5107
 K BAR Solution 667

S S Enforcer E812
Optum's Rita 1001
 Spruce Mtn Rita 7517

G A R Progress#
 G A R 5050 New Design A84
 G A R Solution#
 K BAR Predestined 915
 SydGen Enhance#
 S S Miss Daybreak K011 3K17#
 TEX Playbook 5437#
 EXAR Rita 4749

CED	BW	WW	YW	YH	SC	DOC	HP	MILK	ACT BW								
9	-1	73	129	0.2	0.75	26	12.9	40	56								
30%	10%	25%	25%	85%	60%	20%	40%	1%	ADJ WW (Ratio)								
									662 (104)								
									ADJ YW (Ratio)								
									()								
CW	MARB	RE	FAT	\$M	\$B	\$C											
68	1.59	0.63	0.036	89	205	355											
15%	3%	60%	85%	3%	5%	1%											
CED	BW	WW	YW	DMI	YH	SC	DOC	HP	CEM	MLK	MW	MH	CW	MARB	RE	FAT	TEND
20	4	39	33	93	83	36	35	17	97	2	89	95	7	2	49	90	87

An excellent blend of high marbling and high maternal. This heifer is long patterned and full of body and muscle.



101 Henke Barbara 3072 ET ANGUS^{CS}

Cow | REG: 20699707 | TAG: 3072 | DOB: 2/3/23

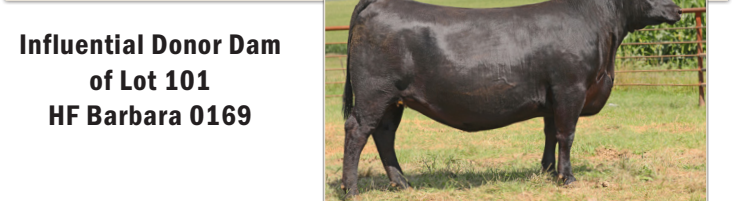
Bar R Jet Black 5063#
LAR Man In Black
 JMB Maxine TG 2131#

Deer Valley Growth Fund
HF Barbara 0169
 HF Barbara 7148

Connealy Black Granite#
 Bar R Iris Anita 0113
 Sitz Top Game 561X#
 JMB Maxine Deluxe 9034#
 Basin Payweight 1682#
 Deer Valley Rita 36113
 LD Capitalist 316#
 HF Barbara 5148

CED	BW	WW	YW	YH	SC	DOC	HP	MILK	ACT BW								
6	5.5	114	188	0.7	2.06	18	16.1	21	82								
55%	95%	1%	1%	35%	2%	55%	15%	85%	ADJ WW (Ratio)								
									679 (103)								
									ADJ YW (Ratio)								
									()								
CW	MARB	RE	FAT	\$M	\$B	\$C											
103	0.88	1.17	0.028	87	212	362											
1%	35%	3%	75%	4%	3%	1%											
CED	BW	WW	YW	DMI	YH	SC	DOC	HP	CEM	MLK	MW	MH	CW	MARB	RE	FAT	TEND
82	99	1	1	100	23	2	29	3	61	85	5	17	1	41	1	54	60

The #1 WW EPD female out of the entire Henke calf crop. Her dam is a powerhouse producer that is great for embryo collection and passes on tremendous performance and muscle. Full brother in blood sells as lot five.



Influential Donor Dam of Lot 101
HF Barbara 0169

henke females



102 Henke Barbara 3082 ET ANGUS^{GS}

Cow | REG: 20699712 | TAG: 3082 | DOB: 2/4/23

Spring Cove Reno 4021#
Yon Top Cut G730
 Yon Sarah D668

Deer Valley Growth Fund
HF Barbara 0169
 HF Barbara 7148

KM Broken Bow 002#
 Spring Cove Liza 021
 V A R Discovery 2240#
 Yon Sarah A615
 Basin Payweight 1682#
 Deer Valley Rita 36113
 LD Capitalist 316#
 HF Barbara 5148

ADJ % IMF (Ratio)	()
ADJ RE (Ratio)	()
ADJ RIB (Ratio)	()
ACT BW	74
ADJ WW (Ratio)	708 (107)
ADJ YW (Ratio)	()

CED	BW	WW	YW	YH	SC	DOC	HP	MILK	ACT BW
9	2.3	101	164	0.7	1.29	16	21.7	23	74
30%	75%	1%	2%	35%	25%	65%	1%	75%	
CW	MARB	RE	FAT	\$M	\$B	\$C			
73	1.24	1.1	-0.04	94	196	348			
10%	15%	10%	4%	1%	10%	2%			

CED	BW	WW	YW	DMI	YH	SC	DOC	HP	CEM	MLK	MW	MH	CW	MARB	RE	FAT	TEND
11	39	2	20	92	45	16	60	3	24	69	16	44	4	6	8	25	84

The #1 HP EPD female out of the entire Henke calf crop. A maternal sister to lot 101. Her full brother sells as lot 38. This female combines so much growth, maternal, and carcass value that there is real donor potential here.



103 Henke Lynn 3084 ANGUS^{GS}

Cow | REG: 20699713 | TAG: 3084 | DOB: 2/5/23

Bar R Jet Black 5063#
LAR Man In Black
 JMB Maxine TG 2131#

LD Capitalist 316#
HF Lynn 8024
 HF Lynn 6110

Connealy Black Granite#
 Bar R Iris Anita 0113
 Sitz Top Game 561X#
 JMB Maxine Deluxe 9034#
 Connealy Capitalist 028#
 LD Dixie Erica 2053
 HF Googol 3002
 HF Lynn 3017#

ADJ % IMF (Ratio)	()
ADJ RE (Ratio)	()
ADJ RIB (Ratio)	()
ACT BW	93
ADJ WW (Ratio)	694 (109)
ADJ YW (Ratio)	()

CED	BW	WW	YW	YH	SC	DOC	HP	MILK	ACT BW
1	5.4	104	175	1	1.39	19	13.8	17	93
90%	95%	1%	1%	10%	20%	50%	30%	95%	
CW	MARB	RE	FAT	\$M	\$B	\$C			
93	0.85	0.77	0.066	62	197	318			
1%	40%	40%	95%	55%	10%	10%			

CED	BW	WW	YW	DMI	YH	SC	DOC	HP	CEM	MLK	MW	MH	CW	MARB	RE	FAT	TEND
80	97	1	1	99	4	21	32	16	70	90	1	1	1	40	27	91	13

A real performance minded heifer here backed by a tremendous cow with 3 WW@101 and 1 YW@104.

104 Henke Royal Queen 3052 ANGUS^{GS}

Cow | REG: 20699698 | TAG: 3052 | DOB: 2/1/23

Bar R Jet Black 5063#
LAR Man In Black
 JMB Maxine TG 2131#

Tehama Patriarch F028
HF Royal Queen 0085
 SydGen Royal Queen 0157

Connealy Black Granite#
 Bar R Iris Anita 0113
 Sitz Top Game 561X#
 JMB Maxine Deluxe 9034#
 S S Niagara Z29#
 Tehama Elite Blackbird D826
 SydGen Journey 7655
 SydGen Royal Queen 7351

ADJ % IMF (Ratio)	()
ADJ RE (Ratio)	()
ADJ RIB (Ratio)	()
ACT BW	68
ADJ WW (Ratio)	601 (95)
ADJ YW (Ratio)	()

CED	BW	WW	YW	YH	SC	DOC	HP	MILK	ACT BW
11	0.8	63	118	0.3	0.14	23	14.6	22	68
15%	40%	50%	40%	75%	90%	30%	25%	80%	
CW	MARB	RE	FAT	\$M	\$B	\$C			
46	1	0.85	0.001	77	169	296			
65%	25%	40%	15%	25%	15%				

CED	BW	WW	YW	DMI	YH	SC	DOC	HP	CEM	MLK	MW	MH	CW	MARB	RE	FAT	TEND
56	69	58	20	69	67	93	16	7	42	75	38	58	51	25	36	36	53

Top 5% Claw EPD, Top 10% for PAP EPD.

105 Henke Dancraig 3085 ANGUS^{GS}

Cow | REG: 20699714 | TAG: 3085 | DOB: 2/5/23

Bar R Jet Black 5063#
LAR Man In Black
 JMB Maxine TG 2131#

LD Capitalist 316#
HF Dancraig 0037
 HF Dancraig 8071#

Connealy Black Granite#
 Bar R Iris Anita 0113
 Sitz Top Game 561X#
 JMB Maxine Deluxe 9034#
 Connealy Capitalist 028#
 LD Dixie Erica 2053
 Connealy Armory#
 HF Dancraig 9080#

ADJ % IMF (Ratio)	()
ADJ RE (Ratio)	()
ADJ RIB (Ratio)	()
ACT BW	82
ADJ WW (Ratio)	690 (109)
ADJ YW (Ratio)	()

CED	BW	WW	YW	YH	SC	DOC	HP	MILK	ACT BW
7	2.7	88	150	0.8	1.5	23	11.7	30	82
45%	80%	3%	5%	25%	15%	30%	55%	25%	
CW	MARB	RE	FAT	\$M	\$B	\$C			
76	0.6	0.71	0.039	58	164	271			
10%	65%	45%	85%	65%	30%	30%			

CED	BW	WW	YW	DMI	YH	SC	DOC	HP	CEM	MLK	MW	MH	CW	MARB	RE	FAT	TEND
37	66	8	14	82	28	23	22	28	77	35	12	14	7	65	56	84	71

Dam has 2 WW@109 and 1 YW@102.

106 Henke Miss Thedford 3068 ANGUS^{GS}

Cow | REG: 20699704 | TAG: 3068 | DOB: 2/2/23
 Bar R Jet Black 5063#
Hoffman Thedford
 HA Rito Lady 3839#
 V A R Discovery 2240#
HF Miss Discovery 9040
 HF Miss Franklin 3013#

Connealy Black Granite#
 Bar R Iris Anita 0113
 KG Solution 0018#
 HA Rito Lady 0622
 A A R Ten X 7008 S A#
 Deer Valley Rita 0308
 TC Franklin 619#
 HF Miss Destination 1104

CED	BW	WW	YW	YH	SC	DOC	HP	MILK	ACT BW								
3	2.7	96	171	1.6	1.89	24	19.5	32	80								
75%	80%	1%	1%	1%	4%	25%	1%	15%	ADJ WW (Ratio)								
CW	MARB	RE	FAT	\$M	\$B	\$C	689 (109)										
98	0.56	0.98	-0.04	80	205	346	ADJ YW (Ratio)										
1%	70%	15%	4%	10%	5%	2%	()										
CED	BW	WW	YW	DMI	YH	SC	DOC	HP	CEM	MLK	MW	MH	CW	MARB	RE	FAT	TEND
59	69	5	3	92	5	7	23	2	2	23	11	5	1	48	6	5	28

Dam has 3 WW@104 and 2 YW@104.

107 Henke Lynn 3073 ANGUS^{GS}

Cow | REG: 20699708 | TAG: 3073 | DOB: 2/3/23
 Bar R Jet Black 5063#
Hoffman Thedford
 HA Rito Lady 3839#
 K C F Bennett Fortress#
HF Lynn 7125
 HF Lynn 1054#

Connealy Black Granite#
 Bar R Iris Anita 0113
 KG Solution 0018#
 HA Rito Lady 0622
 Connealy Consensus#
 Thomas Patricia 9705
 ALC Big Eye D09N#
 HF Lynn 9044

CED	BW	WW	YW	YH	SC	DOC	HP	MILK	ACT BW								
3	4.6	93	155	1.5	1.7	16	17.3	22	90								
75%	95%	2%	3%	1%	10%	65%	5%	80%	ADJ WW (Ratio)								
CW	MARB	RE	FAT	\$M	\$B	\$C	700 (110)										
78	0.66	0.87	-0.004	71	183	308	ADJ YW (Ratio)										
5%	55%	25%	30%	30%	15%	10%	()										
CED	BW	WW	YW	DMI	YH	SC	DOC	HP	CEM	MLK	MW	MH	CW	MARB	RE	FAT	TEND
54	78	7	13	73	4	8	50	8	47	81	13	2	5	79	11	21	83

A big weaning heifer right here.

108 Henke Ericamere 3056 ANGUS^{GS}

Cow | REG: 20699701 | TAG: 3056 | DOB: 2/1/23
 Bar R Jet Black 5063#
Hoffman Thedford
 HA Rito Lady 3839#
 DL Dually#
HF Ericamere 0075
 HF Ericamere 6072

Connealy Black Granite#
 Bar R Iris Anita 0113
 KG Solution 0018#
 HA Rito Lady 0622
 DL Sonic 444#
 DL Incentive 2103
 SydGen Straight Up 8998
 HF Ericamere 2041

CED	BW	WW	YW	YH	SC	DOC	HP	MILK	ACT BW								
8	0.9	84	146	0.9	2.74	22	12.2	26	66								
35%	45%	10%	10%	15%	1%	35%	50%	50%	ADJ WW (Ratio)								
CW	MARB	RE	FAT	\$M	\$B	\$C	663 (105)										
74	0.46	0.66	0.006	59	163	270	ADJ YW (Ratio)										
10%	80%	55%	45%	65%	30%	35%	()										
CED	BW	WW	YW	DMI	YH	SC	DOC	HP	CEM	MLK	MW	MH	CW	MARB	RE	FAT	TEND
54	33	14	21	83	44	1	24	40	92	57	21	19	13	71	53	56	16

Dam has 2 WW@105 and 1 YW@102.

109 Henke Rita 3055 ANGUS^{GS}

Cow | REG: 20699700 | TAG: 3055 | DOB: 2/1/23
 High Point Werner Cut Above
Pine View Premium
 Pine View Susanna C097#
 Bar R Jet Black 5063#
Smith Valley Rita 2081
 KLR Rita 5024

TC Cut Above 426
 High Point Eldorene 2046#
 Connealy In Focus 4925#
 SJH Complete of 353F 0100
 Connealy Black Granite#
 Bar R Iris Anita 0113
 V A R Discovery 2240#
 SJH Complete of 6108 1522

CED	BW	WW	YW	YH	SC	DOC	HP	MILK	ACT BW								
9	1.5	78	137	0.6	1.11	13	11	21	68								
30%	55%	15%	15%	45%	35%	75%	65%	85%	ADJ WW (Ratio)								
CW	MARB	RE	FAT	\$M	\$B	\$C	644 (102)										
62	0.91	0.82	0.042	56	172	279	ADJ YW (Ratio)										
25%	35%	30%	90%	75%	20%	25%	()										
CED	BW	WW	YW	DMI	YH	SC	DOC	HP	CEM	MLK	MW	MH	CW	MARB	RE	FAT	TEND
46	56	17	19	72	48	18	77	68	39	83	17	16	17	26	20	56	95

Balanced trait heifer with a great cow family.

110 Henke Miss Premium 3017 ANGUS^{GS}

Cow | REG: 20699680 | TAG: 3017 | DOB: 1/22/23
 High Point Werner Cut Above
Pine View Premium
 Pine View Susanna C097#
 LD Capitalist 316#
HF Miss Capitalist 9062
 HF Miss CC&7 7121

TC Cut Above 426
 High Point Eldorene 2046#
 Connealy In Focus 4925#
 SJH Complete of 353F 0100
 Connealy Capitalist 028#
 LD Dixie Erica 2053
 HF CC&7 4040
 HF Big Eye 1007#

CED	BW	WW	YW	YH	SC	DOC	HP	MILK	ACT BW								
6	3.2	84	146	0.8	0.96	17	16.1	26	56								
55%	90%	10%	10%	25%	45%	60%	15%	50%	ADJ WW (Ratio)								
CW	MARB	RE	FAT	\$M	\$B	\$C	727 (111)										
81	0.64	0.68	0.038	49	181	284	ADJ YW (Ratio)										
3%	60%	50%	85%	85%	15%	25%	()										
CED	BW	WW	YW	DMI	YH	SC	DOC	HP	CEM	MLK	MW	MH	CW	MARB	RE	FAT	TEND
65	87	3	9	87	22	13	67	22	92	24	2	16	1	60	11	64	17

A dense made heifer with a super cowy look.



henke females

777 Henke Pride Lass 3076 ANGUS^{GS}

Cow | REG: 20701742 | TAG: 3076 | DOB: 2/3/23

Hoover No Doubt
Sterling Pacific 904
Baldrige Isabel B082

G A R Inertia
HF Pride Lass 0079
HF Pride Lass 6075#

Mogck Bullseye#
Miss Blackcap Ellston J2
G A R Prophet#
Baldrige Isabel Y69
G A R Momentum#
G A R Prophet 2984
EXAR Powerhouse 2077B#
R F Pride Lass 3131

ADJ % IMF (Ratio)	()
ADJ RE (Ratio)	()
ADJ RIB (Ratio)	()

CED	BW	WW	YW	YH	SC	DOC	HP	MILK	ACT BW								
1	3.6	77	147	1.2	1	22	13.5	36	86								
90%	95%	15%	10%	3%	40%	35%	35%	4%	ADJ WW (Ratio)								
									689 (109)								
									ADJ YW (Ratio)								
									()								
CW	MARB	RE	FAT	\$M	\$B	\$C											
83	1.13	0.56	0.059	64	196	318											
3%	20%	70%	95%	50%	10%	10%											
CED	BW	WW	YW	DMI	YH	SC	DOC	HP	CEM	MLK	MW	MH	CW	MARB	RE	FAT	TEND
70	79	23	2	100	11	39	58	23	44	6	17	15	2	7	57	87	64

Dam has 2 WW@105.

773 Henke Annie 3088 ANGUS^{GS}

Cow | REG: 20699715 | TAG: 3088 | DOB: 2/7/23

Bar R Jet Black 5063#
Hoffman Thedford
HA Rito Lady 3839#

K C F Bennett Fortress#
HF Annie 7013
Turner Image Maker 85#

Connealy Black Granite#
Bar R Iris Anita 0113
KG Solution 0018#
HA Rito Lady 0622
Connealy Consensus#
Thomas Patricia 9705
H A Image Maker 0415#
Turner K856 9124

ADJ % IMF (Ratio)	()
ADJ RE (Ratio)	()
ADJ RIB (Ratio)	()

CED	BW	WW	YW	YH	SC	DOC	HP	MILK	ACT BW								
12	0.6	75	136	0.6	1.07	9	12.1	30	73								
10%	35%	20%	15%	45%	40%	90%	50%	25%	ADJ WW (Ratio)								
									562 (89)								
									ADJ YW (Ratio)								
									()								
CW	MARB	RE	FAT	\$M	\$B	\$C											
68	0.4	1.35	-0.048	76	174	302											
15%	85%	1%	3%	20%	20%	15%											
CED	BW	WW	YW	DMI	YH	SC	DOC	HP	CEM	MLK	MW	MH	CW	MARB	RE	FAT	TEND
3	8	42	21	70	51	48	78	59	87	28	82	41	17	78	1	3	17

Big time rib eye female.

772 Henke Brenna 3423 ET ANGUS^{GS}

Cow | REG: 20806071 | TAG: 3423 | DOB: 2/10/23

G A R Ashland#
G A R Home Town
Chair Rock Sure Fire 6095

Poss Total Impact 745#
HF Brenna 3033
Turner Objective 9087

G A R Early Bird
Chair Rock Ambush 1018
G A R Sure Fire#
Chair Rock Progress 3005
TC Total 410#
Poss Blackcap 5116
S S Objective T510 OT26#
OO Design 1407 Max 0204

ADJ % IMF (Ratio)	()
ADJ RE (Ratio)	()
ADJ RIB (Ratio)	()

CED	BW	WW	YW	YH	SC	DOC	HP	MILK	ACT BW								
6	3.1	73	137	0.7	1.2	28	10.7	34	78								
55%	90%	25%	15%	35%	30%	10%	65%	10%	ADJ WW (Ratio)								
									592 (100)								
									ADJ YW (Ratio)								
									()								
CW	MARB	RE	FAT	\$M	\$B	\$C											
54	1.25	0.4	0.043	56	166	271											
45%	10%	85%	90%	75%	25%	30%											
CED	BW	WW	YW	DMI	YH	SC	DOC	HP	CEM	MLK	MW	MH	CW	MARB	RE	FAT	TEND
66	76	71	31	83	75	26	18	70	63	11	37	50	61	4	92	85	95

Dam has 6 WW@108 and 4 YW@106.

774 Henke Robyn 3069 ANGUS^{GS}

Cow | REG: 20701760 | TAG: 3069 | DOB: 2/2/23

Hoover No Doubt
Sterling Pacific 904
Baldrige Isabel B082

Plattemere Weigh Up K360#
HF Robyn 6098
HF Robyn 1157

Mogck Bullseye#
Miss Blackcap Ellston J2
G A R Prophet#
Baldrige Isabel Y69
Sitz Upward 307R#
Barbara of Plattemere 337#
B/R New Frontier 095#
R F 2203 Focus 9204

ADJ % IMF (Ratio)	()
ADJ RE (Ratio)	()
ADJ RIB (Ratio)	()

CED	BW	WW	YW	YH	SC	DOC	HP	MILK	ACT BW								
6	1.2	80	139	0.9	0.96	21	7.4	18	63								
55%	50%	10%	15%	15%	45%	40%	95%	95%	ADJ WW (Ratio)								
									589 (93)								
									ADJ YW (Ratio)								
									()								
CW	MARB	RE	FAT	\$M	\$B	\$C											
59	0.74	0.78	-0.019	58	158	263											
30%	50%	35%	15%	65%	35%	40%											
CED	BW	WW	YW	DMI	YH	SC	DOC	HP	CEM	MLK	MW	MH	CW	MARB	RE	FAT	TEND
60	55	19	17	83	29	30	56	87	4	97	28	30	35	22	27	11	52

Dam has 5 BW@93, 5 WW@102, and 4 YW@106.

thank you for supporting our sale!



AMERICAN ANGUS REGISTRATION NUMBER **7** **Henke Man in Black 2167** **ANGUSGS**
Bull | **REG:** 20446324 | **TAG:** 2167 | **DOB:** 08/30/22 **FALL BULL**

SIRE **LAR Man In Black** **Connealy Black Granite#**
 Bar R Jet Black 5063# Bar R Iris Anita 0113
 JMB Maxine TG 2131# Sitz Top Game 561X#

DAM **GVC Susanna D313** **JMB Maxine Deluxe 9034#**
 Vintage Legacy 4409 V A R Generation 2100#
 Pine View Susanna A083 Riverbend Blackcap W944
 Poss Total Impact 745#
 SH Objective 9001

EPDS

CED	BW	WW	YW	YH	SC	DOC	HP	MILK	ACT BW
13	1.7	91	164	1.2	0.66	33	12.7	27	75
10%	65%	2%	2%	10%	65%	2%	45%	45%	ADJ WW (Ratio)
									865 (107)
CW	MARB	RE	FAT	\$M	\$B	\$C			ADJ YW (Ratio)
90	1.23	1.07	0.038	71	217	352			1297 (111)
1%	10%	10%	85%	30%	2%	1%			

PERCENTILE RANK. Rank of that EPD compared to the non parent Angus bulls in the breed. Example: 2% for WW means that animal is in the top 2% of the breed for WW EPD.

DNA TRAITS. DNA score shown as a percentile rank as to how the animal ranks in the Angus breed. Lowered is considered better. Example: 1% would mean the best 1% of the breed.

RATIOS. How the animal compares to the others the same age raised in the same environment. 100 is the average, anything over or under is a percentage. 104 ratio means 4% better than average. 99 means 1% lower than average.

ADJUSTED INTRAMUSCULAR FAT %
ADJUSTED RIBEYE SIZE IN SQ INCHES
ADJUSTED RIB FAT IN INCHES
ACTUAL BIRTH WEIGHT
ADJUSTED 205 DAY WEIGHT
ADJUSTED 365 DAY WEIGHT



American Angus Association \$Value Indexes

Maternal Weaned Calf Value (\$M), an index expressed in dollars per head, predicts profitability differences in progeny due to genetics from conception to weaning. \$M is built off of a self-replacing herd model where commercial cattlemen replace 25% of their breeding females in the first generation and 20% in subsequent generations. Remaining cull females and all male progeny are sold as feeder calves. Increased selection pressure on \$M aims to decrease overall mature cow size and improve foot structure and fertility while maintaining weaning weights consistent with today's production.

Weaned Calf Value (\$W), an index expressed in dollars per head, provides the expected difference in future progeny preweaning performance from birth to weaning. \$W assumes that producers retain 20% of their female progeny for replacements and sell the rest of their cull female and male progeny as feeder calves. Over time, increased selection pressure on \$W will increase weaning and maternal milk traits while also continuing to increase mature cow size.

Feedlot Value (\$F), an index expressed in dollars per head, is the expected average difference in future progeny performance for postweaning merit compared to progeny of other sires. The underlying objective assumes commercial producers will retain ownership of cattle through the feedlot phase and sell fed cattle on a carcass weight basis with no considerations of premiums or discounts for quality and yield grade.

Grid Value (\$G), an index expressed in dollars per carcass, is the expected average difference in future progeny performance for carcass grid merit, including quality and yield grade attributes, compared to progeny of other sires.

Beef Value (\$B), an index expressed in dollars per carcass, facilitates simultaneous multi-trait genetic selection for feedlot and carcass merit. \$B represents the expected average differences in the progeny post-weaning performance and carcass value compared to progeny of other sires. This index assumes commercial producers wean all male and female progeny, retain ownership of these animals through the feedlot phase and market these animals on a quality-based carcass grid.

Combined Value (\$C), an index expressed in dollars per head, includes all traits that make up both \$M and \$B with the objective that commercial producers will replace 20% of their breeding females per year with replacement heifers retained within their own herd. The remaining cull heifer and steer progeny are then assumed to be sent to the feedlot where the producers retain ownership of those cattle and eventually sell them on a quality-based carcass merit grid.

EPDS DIRECTLY INCORPORATED INTO EACH \$VALUE

TRAIT	MATERNAL		TERMINAL			\$C
	\$M	\$W	\$F	\$G	\$B	
CED	✓					✓
BW		✓				
WW	✓	✓				✓
YW			✓		✓	✓
CEM	✓					✓
Milk	✓	✓				✓
MW	✓	✓				✓
DOC	✓					✓
HP	✓					✓
Claw Angle	✓					✓
DMI			✓			✓
CW			✓	✓	✓	✓
RE				✓	✓	✓
Marb				✓	✓	✓
Fat				✓	✓	✓

Dollar value indexes, or **\$Values**, are a tool used to select for several traits at once based on a specific breeding objective. An economic index approach takes into account genetic and economic values as well as the relationships between traits to select for profit.

HENKE FARMS

HENKE ANGUS FARMS
27955 Woodson Ave
Salisbury, MO 65281

Presorted
First-Class Mail
US Postage
PAID
LivestockDirect

FIRST CLASS MAIL - DO NOT DELAY - RETURN SERVICE REQUESTED

lot 1

*Annual
Bull Sale*

MARCH 14, 2024

AT THE FARM EAST OF SALISBURY, MO
ON HIGHWAY 24

Selling

**100 YEARLING & 18-MONTH OLD
ANGUS BULLS & 15 OPEN HEIFERS**

DVAuction
Broadcasting Real-Time Auctions

lot 38