



NORDLUND STOCK FARM, LLC



27th Annual

PRODUCTION SALE

FEBRUARY - 17 - 2024

1:00 PM - AT THE FARM NEAR CLEARBROOK, MN



WWW.NORDLUNDSTOCKFARM.COM

Welcome!

On behalf of our family, it is with great excitement that we invite you to join us for our 27th Annual production sale (49th year for marketing seedstock). We truly appreciate you taking the time to view our offering. Without the continued support of our customers this would not be possible, we thank you.

Our focus is to blend phenotype with genotype. Using all tools available to breed and raise cattle that are fertile, productive, and profitable for our customers. The cattle we breed for are commercially oriented, they have an abundance of volume and fleshing ability, muscle shape, structural soundness, eye appeal, and genetics to perform. As you read through the footnotes you will notice how frequently we refer to the maternal strengths of the cow family from which the bull or female comes from, we put a lot of emphasis on udder quality, feet and maternal traits.

The bulls are developed on a high roughage ration consisting of alfalfa/grass hay, silage, earlage and distillers. This ration allows them to show their genetic potential without sacrificing longevity.

The 2-year-old bulls selling were sorted and saved for this sale only. This is the first time they have been offered for sale, "they are held over not left over." Buy with confidence, they are the top cut of our April/May calving herd. These bulls are specifically raised and developed to be marketed as two year olds.

Bull sale week is an exciting time for us, and we enjoy and look forward to talking with our customers ahead of the sale. Stop by anytime to see the bulls or give us a call when you get the catalog. We would love to discuss our program with you. The sale will be broadcasted on DV Auction. The cattle will be on display for inspection, but they will sell by videos. As always, the cattle are sold with a breeding guarantee.

CALVING-EASE CODE

This is our best estimate based on EPDs, actual birth weight and body shape. Take into consideration your own cow herd genetics, environment and feeding conditions.

*

Use on Cows

**

Use on cows + growthy heifers

Few calving problems when bred to first-calf heifers.

Thanks,

The Nordlunds





NORDLUND STOCK FARM, LLC

27th Annual

PRODUCTION SALE

FEBRUARY - 17 - 2024

1:00 PM - AT THE FARM NEAR CLEARBROOK, MN



SALE LOCATION

NORDLUND STOCK FARM, LLC
44946 151ST AVE • CLEARBROOK, MN 56634
CLEARBROOK, MINNESOTA
NORDLUNDSTOCKFARM@GVTEL.COM

Cattle will sell by video in a heated building. The animals will be on display in pens as usual, but no live animals will sell in a sell ring. Monitors will be set up playing videos during the auction.

SALE DIRECTIONS

One mile south to Clearbrook, MN on State Hwy. 92, 1-3/4 miles west of County Rd 6, then 1 mile south on 151st Ave.

- OR -

9 miles north of Bagley on Hwy. 92, 2 miles west on County Rd 18, then 3-4 mile north on 151st Ave

SALE DAY PHONES

MIKE NORDLUND • (C) 701-799-0943
SAM NORDLUND • (C) 701-799-1613
KELLY NORDLUND • (C) 218-280-3112

AUCTIONEER

CHISUM PETERSON, Chamberlin, SD • 605-730-4214

RINGMEN - BUYER REPS

ANDREW SWANSON, Lee Agri-Media • 507-829-4133
BILL SCHERMER, The Stockman • 641-425-2641
KELLY SCHMIDT, Special Assignment • 406-599-2395
JEFF THOMAS, Special Assignment • 406-581-8859
RACHEL OLIVER, RAAA Comm. Mkt. Specialist • 406-480-1569

LUNCH

Lunch will be served at noon

ACCOMMODATIONS

LePier Lodge, Fosston, MN • 218-435-1088

PERFORMANCE INFO

Scrotal measurements, current weights and ultrasound data will be available sale day.

HEALTH

All cattle have been vaccinated for IBR, BVD, P13, BRSV, 8-way Blackleg, haemophilus and pasteurilla. All FEMALES are calthood vaccinated. Cattle will be poured with Cleanup II. All cattle selling out of state will have necessary health papers for delivery. After health papers are in order we will assist in delivery.

LIVESTOCK INSURANCE

MARTIN TRUDEAU INSURANCE • 800-450-3106
RANDA DEAN • 605-999-3995

We strongly encourage all buyers to insure their purchases, especially bulls that are being boarded.

TRUCKING

Free Delivery in MN and surrounding states to central locations for customers with an accumulated purchase price of \$4,000 or more (bulls or females). We will be glad to aid in delivery for purchases of less than \$4,000 at a cost.

BREEDING GUARANTEE

Bulls and heifers are sold to be guaranteed breeders. In the events of unsatisfactory breeding performance, either a replacement bull or credit will be provided. When a defective bull or heifer is returned to the seller, the animal must be in good health.

BOARDING

Bulls can be boarded after the sale for free until April 1, 2024. After that, a fee of \$4.00 per day will be assessed. Bulls must be picked up by May 1, 2024.

TRANSFER OF REG. PAPERS

Registered cattle will be transferred to the buyer. Please fill out the Transfer & Delivery sheet upon settlement of your purchase. All certificates needed for the bred heifers will be the buyer's responsibility.

TERMS & CONDITIONS

- Each animal will be sold to the highest bidder.
- The auctioneer will settle any bid disputes.
- Animals must be settled for on sale day with cash or your good check.
- All animals are purchaser's risk as soon as sold.
- Any necessary corrections to the sale catalog will be made on sale day.
- Anyone attending this sale attends at their own risk. Nordlund Stock Farm nor any of the sale crew will not be held responsible for any personal injury or illnesses incurred from attending this sale.
- Nordlund Stock Farm is retaining 1/3 semen interest and selling 100% possession on all the bulls unless other terms are stated. In the event that semen is collected it will be done at sellers expense and buyers convenience.

\$150 SALE CREDIT

Anyone who views the cattle prior to sale day will receive a \$150 credit towards the purchase of a bull. Credit good for bulls only! We want you to get the bull that is best fitted to your operation. As much as we would like to spend time with every customer looking at cattle on sale day, it can be difficult. For this reason, we are encouraging people to come and take a look ahead of sale day as well.

VIDEOS CAN BE FOUND AT
www.nordlundstockfarm.com

www.dvauction.com

WATCH + BID ONLINE FOR FREE!

DVAuction
Broadcasting Real-Time Auctions

For general questions, please contact our office at:
402.316.5460 or support@dvauction.com



NSFR Marjorie G83
Dam of Lot 1.



NSFR Justified H79
From the same cow family as Lot 1.
Sold for \$16,500 to Barenthsen-Bullinger



NSFR My Kind D37
Maternal grandsire to Lot 1.
Sold for \$17,000 to
Turtle River Cattle Co.



NSFR FREEDOM L4

RAAA# 4802088 • DOB: 02-15-2023 • BULL • 100% AR

LASO BUCKET LIST E8G

NIO AMERICAN FREEDOM 1005
NIO LAKOTA 9251

NSFR MY KIND D37

NSFR MARJORIE G83
NSFR REBECCA A38

	BW	WW	YW
Wt.	71	719	1347
Ratio	87	101	104
Jan. 2 Wt.	-	CE	***



	ProS	HB	GM	CED	BW	WW	YW	MILK	HPG	STAY	MARB	REA
EPD	100	41	59	17	-3	79	127	26	13	11	0.59	0.45
%	34%	71%	14%	8%	29%	4%	5%	48%	23%	88%	19%	6%

As we started compiling the sale catalog data, for what is probably our most complete and consistent set of bulls we have raised; we decided to start with the NIO American Freedom progeny. They bring so many things into balance. Here is a stellar bull with added substance and mass rarely seen in a sure-fire calving ease bull. Hailing from a cow family who raised some great ones! Truly a favorite bull!



NSFR FREEDOM L49

RAAA# 4801980 • DOB: 02-22-2023 • BULL • 100% AR

LASO BUCKET LIST E8G

NIO AMERICAN FREEDOM 1005
NIO LAKOTA 9251

BIEBER HARD DRIVE Y120

NSFR BRANDY D245
NSFR BRANDY U143

	BW	WW	YW
Wt.	76	727	1308
Ratio	91	102	101
Jan. 2 Wt.	-	CE	***



	ProS	HB	GM	CED	BW	WW	YW	MILK	HPG	STAY	MARB	REA
EPD	99	59	40	17	-4.9	76	121	28	15	16	0.74	0.18
%	35%	34%	47%	9%	7%	7%	10%	31%	8%	30%	6%	41%

Here is a showstopper! Love the design that this bull offers, he rounds it off with a super set of balanced numbers. Dam is a consistent producer with a low-birth weight ratio of 5@87 and an MPPA of 105. He will be a fan favorite come sale day!



NSFR FREEDOM L51

RAAA# 4802102 • DOB: 02-22-2023 • BULL • 100% AR

LASO BUCKET LIST E8G
NIO AMERICAN FREEDOM 1005
 NIO LAKOTA 9251

	BW	WW	YW
Wt.	80	719	1243
Ratio	102	101	96
Jan. 2 Wt.	-	CE	***

COLLIER FINISHED PRODUCT
NSFR REBBECA H53
 NSFR REBECCA B87



	ProS	HB	GM	CED	BW	WW	YW	MILK	HPG	STAY	MARB	REA
EPD	98	48	50	15	-3.8	71	109	24	14	12	0.68	0.33
%	37%	57%	27%	26%	17%	16%	26%	71%	14%	81%	10%	15%

Here is another American Freedom son that offers a multiple, balanced trait approach to improve anyone's herd. **White ahead of the naval.**



NSFR FREEDOM L118

RAAA# 4802212 • DOB: 03-13-2023 • BULL • 100% AR

LASO BUCKET LIST E8G
NIO AMERICAN FREEDOM 1005
 NIO LAKOTA 9251

	BW	WW	YW
Wt.	70	692	1367
Ratio	TWN	100	100
Jan. 2 Wt.	-	CE	**

BAR M SUN KING 5045
NSFR MOONBEAM G252
 NSFR MOONBEAM Z317



	ProS	HB	GM	CED	BW	WW	YW	MILK	HPG	STAY	MARB	REA
EPD	99	58	42	10	-1.4	68	103	33	14	16	0.77	0.07
%	35%	37%	43%	82%	60%	25%	40%	3%	9%	29%	5%	65%

Here is a super capacious bull that really is coming on! His dam hails from the Moonbeam cow family which offers outstanding production records. The daughters are going to be fantastic. **Twin with a bull.**



NSFR FREEDOM L124

RAAA# 4802174 • DOB: 03-14-2023 • BULL • 100% AR

LASO BUCKET LIST E8G
NIO AMERICAN FREEDOM 1005
 NIO LAKOTA 9251

	BW	WW	YW
Wt.	65	673	1180
Ratio	89	95	91
Jan. 2 Wt.	-	CE	***

RREDS PATHFINDER F811
NSFR SIERRA J200
 RUST MISS 412B



	ProS	HB	GM	CED	BW	WW	YW	MILK	HPG	STAY	MARB	REA
EPD	59	40	19	15	-1.1	70	104	26	12	13	0.39	0.2
%	91%	72%	87%	20%	65%	19%	36%	49%	43%	68%	57%	36%

Sired by the \$46,000, American Freedom, this guy is smooth, stylish and deep sided.



NSFR FREEDOM L16

RAAA# 4802000 • DOB: 02-19-2023 • BULL • 100% AR

LASO BUCKET LIST E8G
NIO AMERICAN FREEDOM 1005
 NIO LAKOTA 9251

	BW	WW	YW
Wt.	73	771	1174
Ratio	89	108	91
Jan. 2 Wt.	-	CE	***

BIEBER DEEP END B597
NSFR ADDY E42
 WSM MISS ADDY 480B



	ProS	HB	GM	CED	BW	WW	YW	MILK	HPG	STAY	MARB	REA
EPD	95	56	39	17	-2.8	76	111	28	15	13	0.75	0.21
%	42%	41%	49%	6%	32%	7%	23%	30%	8%	75%	6%	34%

We love the functionality, eye appeal and substance that American Freedom offers especially rare in a high carcass bull.





Rust Miss 412B
Dam of Lots 6, 7, 34, 38, 43 - 46, 82, 94, & 100.



NSFR Siera J2
412B daughter, full sister to Lot 34. Sold for \$7,250 to Ressler Land and Cattle.



NSFR Pathway J5
412B son, full sib to Lot 34. Sold for \$13,500 to Prairie Red Angus.



NSFR Ultimatum G1
412B son. Sold for \$9,000 to Bar S Ranch.



NSFR FREEDOM L3

RAAA# 4802040 • DOB: 02-15-2023 • BULL • 100% AR

LASO BUCKET LIST E8G
NIO AMERICAN FREEDOM 1005
NIO LAKOTA 9251

FEDDES GRANITE Z132
RUST MISS 412B
C-BAR SIERA Y27



	ProS	HB	GM	CED	BW	WW	YW	MILK	HPG	STAY	MARB	REA
EPD	74	22	52	14	0.1	74	120	26	11	11	0.44	0.48
%	76%	94%	24%	38%	84%	11%	11%	48%	48%	90%	45%	5%



NSFR FREEDOM L23

RAAA# 4801988 • DOB: 02-19-2023 • BULL • 100% AR

LASO BUCKET LIST E8G
NIO AMERICAN FREEDOM 1005
NIO LAKOTA 9251

FEDDES GRANITE Z132
RUST MISS 412B
C-BAR SIERA Y27



	ProS	HB	GM	CED	BW	WW	YW	MILK	HPG	STAY	MARB	REA
EPD	97	31	67	11	1.3	87	139	26	11	12	0.59	0.36
%	38%	86%	7%	71%	95%	1%	1%	48%	48%	81%	19%	12%

Here are two beef bulls supreme! These two powerhouses have massive amounts of shape with a striking profile. Their prolific dam is as good as they come! Not many cows can maintain 412B's amount of mass while being so sound and functional. She is the most influential female in this year's offering. Be sure to look at these guys, they will be easy to find come sale day!



NSFR FREEDOM L83

RAAA# 4802018 • DOB: 02-25-2023 • BULL • 100% AR

LASO BUCKET LIST E8G
NIO AMERICAN FREEDOM 1005
NIO LAKOTA 9251

	BW	WW	YW
Wt.	82	696	1246
Ratio	101	98	96
Jan. 2 Wt.	-	CE	***

BAR M SUN KING 5045
NSFR FARAH F158
NSFR BRANDY U143



	ProS	HB	GM	CED	BW	WW	YW	MILK	HPG	STAY	MARB	REA
EPD	96	53	42	15	-5.1	61	93	29	15	15	0.81	0.15
%	40%	46%	41%	25%	6%	49%	61%	22%	7%	48%	4%	47%

Here is the last of the American Freedom bulls. Like the others, he offers calving ease, shape, style, growth and carcass. Dam is out of our female-making super star, Bar M Sun King.



NSFR STOCKMARKET L86

RAAA# 4802002 • DOB: 02-26-2023 • BULL • 100% AR

PIE STOCKMAN 4051
BIEBER CL STOCKMARKET E119
BIEBER CL ADELLE 475C

	BW	WW	YW
Wt.	80	712	1336
Ratio	97	100	103
Jan. 2 Wt.	-	CE	**

BAR M SUN KING 5045
NSFR MTX E75
LMG MTX 3032



	ProS	HB	GM	CED	BW	WW	YW	MILK	HPG	STAY	MARB	REA
EPD	112	52	60	13	-1.4	74	125	28	15	13	0.82	0.25
%	18%	48%	12%	54%	60%	10%	6%	28%	8%	67%	3%	27%

Another impressive set of Stockmarket progeny again this year. His progeny have added size, scale, and length with chart topping Marbling. His dam has a picture-perfect udder and has an MPPA of 102. Check out his numbers to boot!



NSFR STOCKMARKET L36

RAAA# 4802082 • DOB: 02-21-2023 • BULL • 100% AR

PIE STOCKMAN 4051
BIEBER CL STOCKMARKET E119
BIEBER CL ADELLE 475C

	BW	WW	YW
Wt.	86	732	1365
Ratio	107	103	105
Jan. 2 Wt.	-	CE	*

BIEBER DEEP END B597
NSFR TJ G81
NSFR TJ D125



	ProS	HB	GM	CED	BW	WW	YW	MILK	HPG	STAY	MARB	REA
EPD	129	60	68	11	-0.6	80	132	24	16	14	0.97	0.32
%	6%	32%	6%	73%	74%	3%	3%	69%	3%	61%	1%	16%

Check this dude out! L36 has tons of muscle expression and stoutness in a proud athletic build. Last year, his dam raised a full sister, we are excited about her future. His dam sports an MPPA of 102. You will love this bull.



NSFR STOCKMARKET L48

RAAA# 4802100 • DOB: 02-22-2023 • BULL • 100% AR

PIE STOCKMAN 4051
BIEBER CL STOCKMARKET E119
BIEBER CL ADELLE 475C

	BW	WW	YW
Wt.	83	750	1371
Ratio	106	105	106
Jan. 2 Wt.	-	CE	**

NSFR PAYOUT F32
NSFR CRICKET H261
NSFR MIMI A6



	ProS	HB	GM	CED	BW	WW	YW	MILK	HPG	STAY	MARB	REA
EPD	114	55	59	11	-1.8	71	114	27	14	14	0.73	0.48
%	16%	43%	14%	73%	51%	17%	18%	37%	16%	55%	7%	5%

Royally bred bull here! Stockmarket and out of a great, Basin Payweight 1682 granddaughter, the daughters will be awesome while the sons will have the same muscle and masculinity. Be sure to look him up!



NSFR FREEDOM L68

RAAA# 4802122 • DOB: 02-24-2023 • BULL • 100% AR

LASO BUCKET LIST E8G
NIO AMERICAN FREEDOM 1005
NIO LAKOTA 9251

	BW	WW	YW
Wt.	79	797	1454
Ratio	101	112	112
Jan. 2 Wt.	-	CE	***

EXAR MONUMENTAL 6056B
NSFR FIONA H57
NSFR FIONA F116



	ProS	HB	GM	CED	BW	WW	YW	MILK	HPG	STAY	MARB	REA
EPD	151	63	87	13	-2.6	90	142	27	13	15	0.87	0.35
%	1%	26%	1%	42%	35%	1%	1%	41%	18%	49%	2%	13%

Black/Red Carrier Outcross bull with breed leading Marbling and performance figures. This is a cowman's type of bull, tremendous performance in a curve bending profile.





14 NSFR STOCKMARKET L76
 RAAA# 4801960 • DOB: 02-25-2023 • BULL • 100% AR

PIE STOCKMAN 4051
BIEBER CL STOCKMARKET E119
 BIEBER CL ADELLE 475C

LSF WIDE SPREAD 0052X
NSFR BURMA C47
 NSFR BRANDY U178

	BW	WW	YW
Wt.	86	675	1318
Ratio	104	95	102
Jan. 2 Wt.	-	CE	*

	ProS	HB	GM	CED	BW	WW	YW	MILK	HPG	STAY	MARB	REA
EPD	110	51	59	11	-0.7	77	122	24	15	13	0.74	0.31
%	20%	50%	14%	73%	73%	6%	9%	67%	9%	69%	6%	18%

Looking to add size, length and carcass without sacrificing functionality, fleshing ability and eye appeal, look no further. This dark red bull is out of a rock star female, sporting a 103 MPPA.

15 NSFR STOCKMARKET K194
 RAAA# 4636145 • DOB: 04-10-2022 • BULL • 100% AR

PIE STOCKMAN 4051
BIEBER CL STOCKMARKET E119
 BIEBER CL ADELLE 475C

CONNEALY EARNAN 076E
RRA RACHEL 144 574
 RRA RACHEL 746 144

	BW	WW	YW
Wt.	81	754	-
Ratio	ET	ET	ET
Jan. 2 Wt.	1830	CE	*

	ProS	HB	GM	CED	BW	WW	YW	MILK	HPG	STAY	MARB	REA
EPD	92	14	77	9	1.4	96	161	27	14	10	0.73	0.38
%	47%	97%	2%	93%	95%	1%	1%	38%	11%	92%	7%	10%

Tremendous bull here with performance stats that are second to none. Full brother topped our bull sale last year to Gill Red Angus. This powerhouse will keep you in business, selling market topping calves. Uniquely bred going back to the great Coneally Earnan bull and out of the phenomenal Rachel cow family, we purchase from Rich Red Angus at their dispersal as their highest selling lot.

2-year old.
16 NSFR STOCKMARKET K222
 RAAA# 4635949 • DOB: 04-15-2022 • BULL • 100% AR

PIE STOCKMAN 4051
BIEBER CL STOCKMARKET E119
 BIEBER CL ADELLE 475C

CONNEALY EARNAN 076E
RRA RACHEL 144 574
 RRA RACHEL 746 144

	BW	WW	YW
Wt.	78	725	-
Ratio	ET	ET	ET
Jan. 2 Wt.	1725	CE	**

	ProS	HB	GM	CED	BW	WW	YW	MILK	HPG	STAY	MARB	REA
EPD	89	33	56	11	-1.5	89	149	27	14	12	0.65	0.2
%	52%	83%	18%	73%	58%	1%	1%	38%	11%	77%	12%	36%

Black/Red Carrier. I don't think you could pack more width, dimension and red meat in a bull. This flush has been flat awesome, producing last year's high selling bull and female; a sister was added to the donor pen this spring, consistent family. Dam is deceased now but was a prolific producer with an MPPA of 108 with over 32 recorded progeny. **2-year old.**

17 NSFR STOCKMARKET L43
 RAAA# 4801968 • DOB: 02-22-2023 • BULL • 100% AR

PIE STOCKMAN 4051
BIEBER CL STOCKMARKET E119
 BIEBER CL ADELLE 475C

RED MINBURN COPENHAGEN 3Y
RED U2 LAKOTA 54B
 RED U-2 LAKOTA 318Y

	BW	WW	YW
Wt.	69	661	1338
Ratio	ET	ET	ET
Jan. 2 Wt.	-	CE	***

	ProS	HB	GM	CED	BW	WW	YW	MILK	HPG	STAY	MARB	REA
EPD	104	62	41	17	-5.5	69	108	26	13	15	0.73	0.23
%	28%	28%	44%	7%	4%	22%	28%	48%	23%	53%	7%	30%

Check this guy out! This calving ease prospect just keeps getting better, very soft and soggy. Flush brother to lot 18 and out of the great Lakota 54B you can't go wrong. Check out his awesome EPDs!



U2 Lakota 54B
Dam of Lots 17, 18, 98, & 99.



NSFR Lakota L64
Full sister to Lots 17 & 18.
She sells as Lot 99.

18



NSFR Rachel J43
Full sib to dam of Lot 19. Sold for \$11,000 to Broken Heart Ranch, SD.



NSFR Portfolio K10
Mat. Brother to dam of Lot 19, & full sib to Lots 15 & 16.
Sold for \$16,500 to Gill Red Angus, SD.



19



NSFR STOCKMARKET L24

RAAA# 4802106 • DOB: 02-19-2023 • BULL • 100% AR

PIE STOCKMAN 4051
BIEBER CL STOCKMARKET E119
BIEBER CL ADELLE 475C

RED MINBURN COPENHAGEN 3Y
RED U2 LAKOTA 54B
RED U-2 LAKOTA 318Y

	BW	WW	YW
Wt.	91	816	1431
Ratio	ET	ET	ET
Jan. 2 Wt.	-	CE	*



	ProS	HB	GM	CED	BW	WW	YW	MILK	HPG	STAY	MARB	REA
EPD	109	50	59	12	-1.8	81	131	26	13	13	0.66	0.31
%	22%	53%	14%	59%	51%	3%	3%	48%	23%	72%	12%	18%

Big time herdsire prospect with unmatched phenotype! L24 is loaded with as much muscle shape and body as you will find. He balances carcass power from his sire and maternal from his beautiful dam. His dam was purchased on the historic U2 dispersal for \$55,000. Nine traits in the 25% of the breed and "look" to go with it. Full brother sells as lot 17 and sisters sell as lot 98 and 99.



NSFR BLUE CHIP L140

RAAA# 4802150 • DOB: 03-18-2023 • BULL • 100% AR

BIEBER CL STOCKMARKET E119
BIEBER BLUE CHIP H302
BIEBER ROSE 162C

BROWN ORACLE B112
NSFR RACHEL J195
RRA RACHEL 144 574

	BW	WW	YW
Wt.	77	750	1357
Ratio	103	105	105
Jan. 2 Wt.	-	CE	***



	ProS	HB	GM	CED	BW	WW	YW	MILK	HPG	STAY	MARB	REA
EPD	114	43	71	16	-2.7	74	119	29	11	14	0.8	0.45
%	16%	67%	5%	13%	34%	10%	12%	25%	64%	65%	4%	6%

Lot 19 is the perfect blend of calving ease, performance and carcass merit while being raised by a beautiful "up and coming" first calf heifer, who we flushed this spring. Broken Heart Red Angus purchased a flush sister to his dam.



20



21



22



20 **NSFR BLUE CHIP L161**
 RAAA# 4802130 • DOB: 03-25-2023 • BULL • 100% AR

BIEBER CL STOCKMARKET E119
BIEBER BLUE CHIP H302
 BIEBER ROSE 162C

HA PRIME CUT 4493
NSFR BLOOM H217
 NSFR TJ X36

	BW	WW	YW
Wt.	95	846	1482
Ratio	120	119	115
Jan. 2 Wt.	-	CE	*

	ProS	HB	GM	CED	BW	WW	YW	MILK	HPG	STAY	MARB	REA
EPD	164	67	97	12	-0.8	85	139	28	13	14	0.9	0.48
%	1%	21%	1%	59%	71%	1%	1%	28%	26%	64%	1%	5%

Black/Red Carrier Big time performer here! This stout, performance driven son is out of a gorgeous Prime Cut daughter, sporting a whopping MPPA of 107. Keep the daughters, they will be worth it!

21 **NSFR QUARTERBACK L40**
 RAAA# 4802192 • DOB: 02-21-2023 • BULL • 100% AR

PIE STOCKMAN 4051
PIE QUARTERBACK 789
 PIE RUBY 520

MUSGRAVE 316 STUNNER
NSFR DAZZLE G110
 NSFR TJ X36

	BW	WW	YW
Wt.	78	689	1303
Ratio	ET	ET	ET
Jan. 2 Wt.	-	CE	***

	ProS	HB	GM	CED	BW	WW	YW	MILK	HPG	STAY	MARB	REA
EPD	121	75	46	15	-4.4	64	103	31	14	19	0.67	0.33
%	10%	11%	33%	26%	11%	40%	39%	11%	16%	6%	11%	15%

Black/Red Carrier. Lots 21-25 are flush brothers with fresh and progressive genetics.

22 **NSFR QUARTERBACK L70**
 RAAA# 4802202 • DOB: 02-24-2023 • BULL • 100% AR

PIE STOCKMAN 4051
PIE QUARTERBACK 789
 PIE RUBY 520

MUSGRAVE 316 STUNNER
NSFR DAZZLE G110
 NSFR TJ X36

	BW	WW	YW
Wt.	84	743	1272
Ratio	ET	ET	ET
Jan. 2 Wt.	-	CE	***

	ProS	HB	GM	CED	BW	WW	YW	MILK	HPG	STAY	MARB	REA
EPD	98	51	47	16	-4.8	67	107	31	14	15	0.67	0.23
%	37%	51%	32%	12%	8%	29%	30%	10%	16%	53%	11%	30%

Black/Red Carrier. Calving ease, growth, carcass and out of a maternal centerpiece female, Dazzle G110, what more do you need.

23 **NSFR QUARTERBACK L89**
 RAAA# 4801940 • DOB: 02-27-2023 • BULL • 100% AR

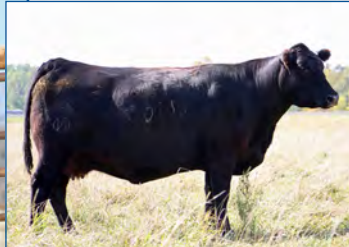
PIE STOCKMAN 4051
PIE QUARTERBACK 789
 PIE RUBY 520

MUSGRAVE 316 STUNNER
NSFR DAZZLE G110
 NSFR TJ X36

	BW	WW	YW
Wt.	69	609	1256
Ratio	ET	ET	ET
Jan. 2 Wt.	-	CE	***

	ProS	HB	GM	CED	BW	WW	YW	MILK	HPG	STAY	MARB	REA
EPD	119	47	72	15	-6	59	103	31	14	15	0.76	0.57
%	11%	58%	4%	25%	2%	60%	39%	10%	16%	46%	6%	2%

Super stout and wide-bodied son of Quarterback. Quarterback progeny are highly sought after and are in high demand with semen selling for nearly \$1,800 per unit.



NSFR Dazzle G110
Dam of Lots 21-25, & 29.



NSFR Dazzle L47
Full sister to Lots 21-25.
Sold for \$9,500 to Berwald Red Angus.

24



Musgrave 316 Stunner
Maternal grandsire to Lots 21-25, & 29.



25



NSFR QUARTERBACK L59

RAAA# 4802198 • DOB: 02-23-2023 • BULL • 100% AR

PIE STOCKMAN 4051
PIE QUARTERBACK 789
PIE RUBY 520

MUSGRAVE 316 STUNNER
NSFR DAZZLE G110
NSFR TJ X36

	BW	WW	YW
Wt.	72	695	1382
Ratio	ET	ET	ET
Jan. 2 Wt.	-	CE	***



	ProS	HB	GM	CED	BW	WW	YW	MILK	HPG	STAY	MARB	REA
EPD	152	73	80	13	-4.1	73	131	31	14	19	0.78	0.36
%	1%	14%	2%	44%	14%	12%	3%	11%	16%	8%	5%	12%



NSFR QUARTERBACK L74

RAAA# 4802072 • DOB: 02-24-2023 • BULL • 100% AR

PIE STOCKMAN 4051
PIE QUARTERBACK 789
PIE RUBY 520

MUSGRAVE 316 STUNNER
NSFR DAZZLE G110
NSFR TJ X36

	BW	WW	YW
Wt.	82	741	1285
Ratio	ET	ET	ET
Jan. 2 Wt.	-	CE	***



	ProS	HB	GM	CED	BW	WW	YW	MILK	HPG	STAY	MARB	REA
EPD	145	76	70	16	-3.7	68	116	31	14	19	0.7	0.4
%	2%	11%	5%	14%	19%	23%	15%	11%	16%	7%	9%	8%

Here is a pair of bulls that blend outstanding genetics in a visual package. These two have been favorites all summer. Loaded with so much stifle, mass and substance, coupled with the maternal greatness of Musgrave Stunner. We sold a flush sister to their dam to C – Bar Ranch, KS and we also sold a flush sister to these bulls to Berwald Red Angus, SD. Genotype to Phenotype, you will love these guys! Very few bulls can match their EPD profile.



HA Prime Cut 4493
Maternal grand sire to Lots 26 & 27.



WSM Quarterback 076H
Sire of Lots 27 - 31.
Service sire to several bred heifers.



NSFR Rebecca K147
WSM Quarterback 076H daughter.



NSFR QUARTERBACK L92

RAAA# 4801990 • DOB: 03-02-2023 • BULL • 100% AR

PIE STOCKMAN 4051
PIE QUARTERBACK 789
PIE RUBY 520

HA PRIME CUT 4493
NSFR BLOOM H211
NSFR TJ X36

	BW	WW	YW
Wt.	93	793	1465
Ratio	ET	ET	ET
Jan. 2 Wt.	-	CE	*



	ProS	HB	GM	CED	BW	WW	YW	MILK	HPG	STAY	MARB	REA
EPD	120	41	79	11	0.9	86	151	33	13	12	0.62	0.48
%	11%	70%	2%	75%	92%	1%	1%	5%	17%	79%	15%	5%

Here is a genetic gem! This guy is loaded; long sided, thick and muscular. He is an embryo son of our Prime Cut donor H211. H211 is a stunning bold sprung female with an MPPA of 111. His flush sisters are amazing. Sure to be a favorite by many for his breed leading multi-trait EPDs, outcross pedigree and herd-sire design.



NSFR QUARTERBACK K210

RAAA# 4636069 • DOB: 04-14-2022 • BULL • 100% AR

PIE QUARTERBACK 789
WSM QUARTERBACK 076H
WSM FOREVER EPIC 705E

HA PRIME CUT 4493
NSFR BROOKLYN H191
NSFR TJ X36

	BW	WW	YW
Wt.	91	800	-
Ratio	122	117	119
Jan. 2 Wt.	1845	CE	*



	ProS	HB	GM	CED	BW	WW	YW	MILK	HPG	STAY	MARB	REA
EPD	128	64	64	10	0.4	82	139	28	13	18	0.63	0.23
%	6%	25%	9%	87%	88%	2%	1%	35%	26%	15%	14%	30%

Big time performance headliner! He is the epitome of what we are trying to do. Cattle that are functional, maternal, eye appealing in their design with numbers and added carcass merit. His powerhouse dam is a flush sister to the dam of lot 20 and 26, how's that for consistency. Check out his explosive numbers! 2-year old.



NSFR QUARTERBACK L153

RAAA# 4801986 • DOB: 03-22-2023 • BULL • 100% AR

	BW	WW	YW
Wt.	88	749	1303
Ratio	107	105	101
Jan. 2 Wt.	-	CE	*

PIE QUARTERBACK 789
WSM QUARTERBACK 076H
WSM FOREVER EPIC 705E

BASIN PAYWEIGHT 1682
NSFR ROSE VERA D231
NSFR ROSE VERA Z252



	ProS	HB	GM	CED	BW	WW	YW	MILK	HPG	STAY	MARB	REA
EPD	116	55	61	10	-1.1	67	109	29	12	15	0.64	0.04
%	14%	43%	12%	89%	65%	28%	27%	20%	34%	44%	13%	71%

Ultra complete son of WSM Quarterback who we purchased from Wasem Red Angus, his progeny are consistent and will be highly marketable for their type and herd improving credentials. His dam is a productive front pasture type of cow with an MPPA of 102. Check out his outcross dam going back to Basin Payweight 1682.



NSFR QUARTERBACK L147

RAAA# 4802116 • DOB: 03-19-2023 • BULL • 100% AR

	BW	WW	YW
Wt.	82	742	1320
Ratio	104	104	102
Jan. 2 Wt.	-	CE	***

PIE QUARTERBACK 789
WSM QUARTERBACK 076H
WSM FOREVER EPIC 705E

BAR M SUN KING 5045
NSFR ADDY H108
NSFR ADDY E42



	ProS	HB	GM	CED	BW	WW	YW	MILK	HPG	STAY	MARB	REA
EPD	144	74	70	14	-1.7	70	120	34	15	16	0.5	-0.03
%	2%	12%	5%	32%	54%	19%	10%	3%	5%	34%	32%	84%

L147 is a proud, attractively made bull. Dam is a stunning Sun King daughter with an MPPA of 101.



NSFR COD K217

RAAA# 4636027 • DOB: 04-14-2022 • BULL • 100% AR

	BW	WW	YW
Wt.	73	681	-
Ratio	94	99	98
Jan. 2 Wt.	1555	CE	***

PELTON WIDELOAD 78B
NSFR CALL OF DUTY G244
NSFR TJ X36

NSFR MY KIND D37
NSFR EMULOUS G28
NSFR REBBECA C37



	ProS	HB	GM	CED	BW	WW	YW	MILK	HPG	STAY	MARB	REA
EPD	103	70	34	11	-3.3	61	90	28	14	17	0.56	-0.05
%	29%	17%	60%	71%	24%	50%	68%	34%	14%	21%	22%	87%

Moderate framed heifer bull, out of a hardworking female with an MPPA of 101. 2-year old.



NSFR PATHFINDER K228

RAAA# 4636161 • DOB: 04-16-2022 • BULL • 100% AR

	BW	WW	YW
Wt.	83	632	-
Ratio	ET	ET	ET
Jan. 2 Wt.	1605	CE	**

RREDS SENECA 731C
RREDS PATHFINDER F811
RREDS KIMA D607

FEDDES GRANITE Z132
RUST MISS 412B
C-BAR SIERA Y27



	ProS	HB	GM	CED	BW	WW	YW	MILK	HPG	STAY	MARB	REA
EPD	95	71	25	16	-0.7	70	115	26	10	19	0.24	0.33
%	41%	16%	78%	13%	73%	17%	16%	50%	75%	9%	90%	15%

This captivating bull is a member of a very impressive set of flush siblings we sold to Prairie Red Angus, MN, Twedt Red Angus, ND and Ressler Land and Cattle, ND. K228 has a striking profile, curve bending growth and maternal attributes to amplify any program. Be sure to find him! 2-year old.



NSFR QUARTERBACK L137

RAAA# 4802092 • DOB: 03-17-2023 • BULL • 100% AR

	BW	WW	YW
Wt.	82	659	1313
Ratio	102	93	101
Jan. 2 Wt.	-	CE	***

PIE QUARTERBACK 789
WSM QUARTERBACK 076H
WSM FOREVER EPIC 705E

MUSGRAVE 316 STUNNER
NSFR DAZZLE G110
NSFR TJ X36



	ProS	HB	GM	CED	BW	WW	YW	MILK	HPG	STAY	MARB	REA
EPD	132	74	58	14	-1.6	70	121	29	13	18	0.42	0.48
%	4%	12%	14%	38%	56%	19%	9%	22%	25%	11%	49%	5%

Black/Red Carrier L137 has a fresh pedigree and the qualities for hitting all the marks for ranch profitability. Lot 30's dam is the beautiful donor Dazzle G110.



NSFR QUARTERBACK K185

RAAA# 4635933 • DOB: 04-05-2022 • BULL • 100% AR

	BW	WW	YW
Wt.	78	697	-
Ratio	95	99	100
Jan. 2 Wt.	1635	CE	***

PIE QUARTERBACK 789
WSM QUARTERBACK 076H
WSM FOREVER EPIC 705E

PIE ONE OF A KIND 352
NSFR MIMI D4
NSFR MISS MIMI T110



	ProS	HB	GM	CED	BW	WW	YW	MILK	HPG	STAY	MARB	REA
EPD	109	84	25	15	-4.5	58	95	30	12	20	0.59	-0.23
%	22%	5%	77%	20%	10%	61%	56%	16%	31%	3%	19%	99%

Sure-fire heifer bull out of a flawless cow with an MPPA of 101. His granddam is our great Mimi T110 cow who will be turning 16 years old. 2-year old.



NSFR VIROQUA L69

RAAA# 4801974 • DOB: 02-24-2023 • BULL • 100% AR

	BW	WW	YW
Wt.	79	657	1356
Ratio	96	92	105
Jan. 2 Wt.	-	CE	**

WOODHILL PATENT
DAMERON VIROQUA
WOODHILL EVERGREEN B124-F168

LSF SAGA 1040Y
NSFR QUEEN D46
NSFR MISS RED RANGER S57



	ProS	HB	GM	CED	BW	WW	YW	MILK	HPG	STAY	MARB	REA
EPD	115	52	62	13	-1.7	73	120	30	12	12	0.52	0.24
%	15%	48%	10%	44%	54%	11%	10%	15%	32%	81%	29%	29%

Black/Red Carrier Trying to expand the gene pool leads to the creation of this guy. Woodhill Viroqua adds type and kind, extra performance and will improve carcass quality.



34



NSFR PRIME CUT L148

RAAA# 4802044 • DOB: 03-19-2023 • BULL • 100% AR

HA PRIME CUT 4493
NSFR PRIME CUT H187
 NSFR TJ X36

	BW	WW	YW
Wt.	92	802	1510
Ratio	112	113	117
Jan. 2 Wt.	-	CE	*

HXC ALLEGIANCE 5502C
NSFR ROSE VERA F27
 NSFR ROSE VERA Z252



	ProS	HB	GM	CED	BW	WW	YW	MILK	HPG	STAY	MARB	REA
EPD	120	53	67	9	2.2	85	142	26	13	15	0.52	0.47
%	11%	47%	7%	90%	98%	1%	1%	48%	27%	41%	29%	5%

Black/Red Carrier If you want to make some scale smashing feeder calves here he is! L148 has unmatched phenotypic power and a whopping weaning ratio of 113.



NSFR BLUE PRINT K245

RAAA# 4635945 • DOB: 04-20-2022 • BULL • 100% AR

GLACIER CHATEAU 744
RREDS BLUE PRINT H001
 RREDS PRIMROSE F835

	BW	WW	YW
Wt.	77	663	-
Ratio	96	97	96
Jan. 2 Wt.	1620	CE	***

RED SOO LINE POWER EYE 161X
NSFR TJ E181
 NSFR TJ X36



	ProS	HB	GM	CED	BW	WW	YW	MILK	HPG	STAY	MARB	REA
EPD	75	65	10	14	-3	56	86	27	11	16	0.25	0.18
%	74%	23%	95%	34%	29%	69%	75%	44%	47%	33%	88%	41%

Smooth and attractive bull. **2-year old.**



NSFR BLUE PRINT L159

RAAA# 4801972 • DOB: 03-25-2023 • BULL • 100% AR

GLACIER CHATEAU 744
RREDS BLUE PRINT H001
 RREDS PRIMROSE F835

	BW	WW	YW
Wt.	92	704	1319
Ratio	112	99	100
Jan. 2 Wt.	-	CE	*

PIE ONE OF A KIND 352
NSFR TJ D23
 NSFR TJ X36



	ProS	HB	GM	CED	BW	WW	YW	MILK	HPG	STAY	MARB	REA
EPD	94	58	37	10	0.1	78	126	29	12	16	0.25	0.67
%	43%	37%	54%	85%	84%	4%	5%	23%	40%	39%	88%	1%

We cannot say enough about the Blue Print progeny. Blue Print adds width and depth in a bold sprung appearance. L159 hails from a very prolific D23 cow who always brings in a top end calf and has a MPPA of 103, maternal brother sold to Bauman Red Angus last year for \$8,000.



NSFR BLUE PRINT K243

RAAA# 4636029 • DOB: 04-20-2022 • BULL • 100% AR

GLACIER CHATEAU 744
RREDS BLUE PRINT H001
 RREDS PRIMROSE F835

	BW	WW	YW
Wt.	81	738	-
Ratio	104	108	106
Jan. 2 Wt.	1520	CE	***

STRA HERCULES 706
NSFR MARVEL G143
 NSFR MARVEL C240



	ProS	HB	GM	CED	BW	WW	YW	MILK	HPG	STAY	MARB	REA
EPD	69	38	31	11	-1.9	72	115	29	11	13	0.29	0.35
%	82%	75%	67%	70%	50%	14%	17%	22%	51%	76%	81%	13%

You must appreciate the practicality and functionality of the Blue Print progeny. Dam has an MPPA of 102. Keep the daughters. **2-year old.**



NSFR BLUE PRINT K231

RAAA# 4636163 • DOB: 04-17-2022 • BULL • 100% AR

GLACIER CHATEAU 744
RREDS BLUE PRINT H001
 RREDS PRIMROSE F835

	BW	WW	YW
Wt.	98	770	-
Ratio	ET	ET	ET
Jan. 2 Wt.	1695	CE	*

FEDDES GRANITE Z132
RUST MISS 412B
 C-BAR SIERA Y27



	ProS	HB	GM	CED	BW	WW	YW	MILK	HPG	STAY	MARB	REA
EPD	63	38	25	13	-0.9	67	113	27	10	14	-0.01	0.68
%	88%	75%	78%	53%	68%	26%	19%	35%	76%	60%	99%	1%

Awesome Blue Print son loaded with tons of mass and dimension. The flush sisters are fantastic! **2-year old.**



NSFR BLUE PRINT L96

RAAA# 4802142 • DOB: 03-04-2023 • BULL • 100% AR

GLACIER CHATEAU 744
RREDS BLUE PRINT H001
 RREDS PRIMROSE F835

	BW	WW	YW
Wt.	69	669	1122
Ratio	92	94	87
Jan. 2 Wt.	-	CE	***

WFL MERLIN 018A
NSFR JAYLA J64
 NSFR JAMES TJ W26



	ProS	HB	GM	CED	BW	WW	YW	MILK	HPG	STAY	MARB	REA
EPD	47	54	-7	17	-4.7	59	82	31	10	14	0.12	0.43
%	97%	45%	99%	7%	9%	59%	80%	13%	79%	55%	98%	7%

What makes Blue Print truly unique is his ability to sire sure-fire heifer bulls while maintaining if not adding mass and substance. L96 was raised by a first calf heifer.



NSFR BLUE PRINT L45

RAAA# 4801966 • DOB: 02-22-2023 • BULL • 100% AR

GLACIER CHATEAU 744
RREDS BLUE PRINT H001
 RREDS PRIMROSE F835

	BW	WW	YW
Wt.	86	780	1340
Ratio	104	110	104
Jan. 2 Wt.	-	CE	**

BIEBER HARD DRIVE Y120
NSFR COPPER QUEEN C238
 UBAR BILLIE 658



	ProS	HB	GM	CED	BW	WW	YW	MILK	HPG	STAY	MARB	REA
EPD	55	41	14	13	-3.5	69	104	30	12	14	0.16	0.57
%	94%	70%	92%	54%	21%	22%	38%	18%	36%	66%	97%	2%

One of the stoutest, widest made bulls in the offering! Complete from end to end, this tank of a bull will add shape and volume to anyone's herd. Dam is a tremendous producer with a whopping MPPA of 110.



RREDS Blue Print H001
Sire of Lots 36 -42, 89, 91, 94, 97, 101

42



NSFR Donald K54
Full brother to Lots 43 - 46 & 82. Sold for \$13,000 to Gill Red Angus, SD.



RED SSS Tycoon 225E
Sire of Lots 43 - 48, 82, 85, 86 & 90.



43



NSFR BLUE PRINT L35

RAAA# 4802098 • DOB: 02-21-2023 • BULL • 100% AR

GLACIER CHATEAU 744
RREDS BLUE PRINT H001
RREDS PRIMROSE F835

BIEBER DEEP END B597
NSFR CLAUDIA H76
NSFR CLAUDIA X277

	BW	WW	YW
Wt.	76	729	1353
Ratio	97	102	103
Jan. 2 Wt.	-	CE	***



	ProS	HB	GM	CED	BW	WW	YW	MILK	HPG	STAY	MARB	REA
EPD	117	71	46	13	-2	77	125	26	13	17	0.51	0.48
%	13%	15%	34%	50%	48%	6%	6%	53%	21%	23%	30%	5%

Blue Print x Deep End works every time! He is the best of two worlds, calving ease with real world performance and a cow family storied with longevity. He's a real favorite!



NSFR TYCOON K238

RAAA# 4636169 • DOB: 04-19-2022 • BULL • 100% AR

LSF SRR TYSON 3025A
RED SSS TYCOON 225E
RED SSS VALENTINE 335Z

FEDDES GRANITE Z132
RUST MISS 412B
C-BAR SIERA Y27

	BW	WW	YW
Wt.	86	675	-
Ratio	ET	ET	ET
Jan. 2 Wt.	1780	CE	**



	ProS	HB	GM	CED	BW	WW	YW	MILK	HPG	STAY	MARB	REA
EPD	89	36	53	13	-2.7	66	111	21	8	14	0.46	0.07
%	52%	80%	21%	54%	34%	32%	23%	87%	96%	60%	40%	65%

Here is a real sale feature! This show stopper is loaded with as much volume and substance as you can pack into a bull. Full brothers sold to Gill Red Angus, SD and Huber EY Red Angus, ND in last year's sale. He is just fun to be around! 2-year old.



NSFR TYCOON K207

RAAA# 4636153 • DOB: 04-12-2022 • BULL • 100% AR

LSF SRR TYSON 3025A
RED SSS TYCOON 225E
 RED SSS VALENTINE 335Z

FEDDES GRANITE Z132
RUST MISS 412B
 C-BAR SIERA Y27

	BW	WW	YW
Wt.	89	694	-
Ratio	ET	ET	ET
Jan. 2 Wt.	1810	CE	*



	ProS	HB	GM	CED	BW	WW	YW	MILK	HPG	STAY	MARB	REA
EPD	72	12	60	12	-1.3	81	137	21	8	10	0.35	0.19
%	78%	98%	12%	59%	61%	3%	2%	87%	96%	91%	67%	38%

Tremendous star here! You will love the design of this guy; his combination of numbers and performance don't hurt either. 412B is a no miss cow that is hard to fault. **2-year old**



NSFR TYCOON K199

RAAA# 4636149 • DOB: 04-11-2022 • BULL • 100% AR

LSF SRR TYSON 3025A
RED SSS TYCOON 225E
 RED SSS VALENTINE 335Z

FEDDES GRANITE Z132
RUST MISS 412B
 C-BAR SIERA Y27

	BW	WW	YW
Wt.	83	573	-
Ratio	ET	ET	ET
Jan. 2 Wt.	1595	CE	***



	ProS	HB	GM	CED	BW	WW	YW	MILK	HPG	STAY	MARB	REA
EPD	85	41	44	14	-2.3	73	119	21	8	14	0.36	0.28
%	59%	70%	39%	39%	42%	12%	12%	87%	96%	61%	65%	22%

Here is another well-made Tycoon x 412B et son who covers all the bases. You won't go wrong here! **2-year old.**



NSFR TYCOON K249

RAAA# 4636171 • DOB: 04-22-2022 • BULL • 100% AR

LSF SRR TYSON 3025A
RED SSS TYCOON 225E
 RED SSS VALENTINE 335Z

FEDDES GRANITE Z132
RUST MISS 412B
 C-BAR SIERA Y27

	BW	WW	YW
Wt.	88	631	-
Ratio	ET	ET	ET
Jan. 2 Wt.	1590	CE	***



	ProS	HB	GM	CED	BW	WW	YW	MILK	HPG	STAY	MARB	REA
EPD	96	59	37	14	-2.4	72	121	21	8	17	0.29	0
%	40%	34%	53%	30%	40%	13%	9%	87%	96%	22%	81%	79%

As you look through the catalog you can see the huge impact 412B has made on this offering and our program. **2-year old.**



NSFR TYCOON K203

RAAA# 4635953 • DOB: 04-12-2022 • BULL • 100% AR

LSF SRR TYSON 3025A
RED SSS TYCOON 225E
 RED SSS VALENTINE 335Z

BIEBER DEEP END B597
NSFR MIMI E1
 NSFR MISS MIMI T110

	BW	WW	YW
Wt.	68	714	-
Ratio	84	104	110
Jan. 2 Wt.	1670	CE	**



	ProS	HB	GM	CED	BW	WW	YW	MILK	HPG	STAY	MARB	REA
EPD	95	22	73	12	-0.6	85	142	23	11	10	0.66	0.2
%	41%	94%	4%	56%	74%	1%	1%	79%	49%	93%	12%	36%

What a massively constructed bull we have here! Check this stud out, stunningly designed and numbered with strong maternal strengths and longevity. His dam has an MPPA of 104 and the first four generations of females in his pedigree all have MPPAs over 100. Impressive bull! **2-year old.**



NSFR TYCOON K198

RAAA# 4635987 • DOB: 04-11-2022 • BULL • 100% AR

LSF SRR TYSON 3025A
RED SSS TYCOON 225E
 RED SSS VALENTINE 335Z

HXC ALLEGIANCE 5502C
NSFR FIONA F2
 NSFR MISS MIMI T110

	BW	WW	YW
Wt.	78	662	-
Ratio	98	96	99
Jan. 2 Wt.	1605	CE	***



	ProS	HB	GM	CED	BW	WW	YW	MILK	HPG	STAY	MARB	REA
EPD	127	69	58	12	-3.1	71	117	23	10	19	0.63	0.09
%	7%	18%	15%	63%	26%	16%	13%	78%	80%	8%	14%	62%

Sure-fire heifer bull with great performance and strong carcass traits, what more do you need. **2-year old.**





49

NSF RESILIENT L39

AAA# 20784054 • DOB: 2/21/2023 • BULL • ANGUS

SITZ STELLAR 726D
SITZ RESILIENT 10208
 SITZ MISS BURGESS 1856

	BW	WW	YW
Wt.	79	747	1495
Ratio	98	107	-
Jan. 2 Wt.	-	CE	***

SIX MILE DESERT STORM 94D
BLAIR'S INSTINCT 01F
 BLAIR'S INSTINCT 791C



Sitz Resilient 0208
 Sire of Lots 49 - 54.



NSFR Instinct K37
 Maternal sister to Lot 49.
 Sold to Anderson Farms Cattle, MN.



NSF Instinct H90
 Maternal sister to Lot 49.



	CED	BW	WW	YW	HP	MILK	\$EN	MARB	\$M	\$W	\$B	\$C
EPD	7	0.5	80	139	11.8	31	-9	0.63	90	86	138	269
%	45%	35%	10%	15%	55%	20%	35%	55%	3%	2%	60%	35%

Herd bull Alert! This impressive bull combines the antagonist traits of calving-ease and performance. He does it in a functional way; he's loaded with mass, muscle, and does it with style. Dam is a captivating female you can't help but admire for her impeccable quality and mass. She has a weaning ratio of 3@104 and yearling 1@112.

NSF RESILIENT L60

AAA# 20784082 • DOB: 2/23/2023 • BULL • ANGUS

SITZ STELLAR 726D
SITZ RESILIENT 10208
 SITZ MISS BURGESS 1856

	BW	WW	YW
Wt.	71	675	1227
Ratio	88	97	-
Jan. 2 Wt.	-	CE	***

OSU CURRENCY 8173
NSF TWITTER X19
 NSF LADY 004 T121



	CED	BW	WW	YW	HP	MILK	\$EN	MARB	\$M	\$W	\$B	\$C
EPD	8	-1.6	50	83	10.9	31	0	0.87	74	62	132	245
%	35%	10%	85%	90%	70%	20%	20%	30%	25%	45%	65%	55%

Smooth made heifer bull out of a tried-and-true female, turning fourteen this spring. Check out his Claw and Angle scores in the top 2% of the breed.



NSF RESILIENT L97

AAA# 20784046 • DOB: 3/4/2023 • BULL • ANGUS

SITZ STELLAR 726D
SITZ RESILIENT 10208
 SITZ MISS BURGESS 1856

	BW	WW	YW
Wt.	75	688	1338
Ratio	102	98	-
Jan. 2 Wt.	-	CE	*

BAR S COWBOY UP 9344
NSF INSTINCT J131
 NSF INSTINCT G4



	CED	BW	WW	YW	HP	MILK	\$EN	MARB	\$M	\$W	\$B	\$C
EPD	2	3.1	86	130	12.8	19	-17	0.57	69	75	111	213
%	85%	90%	5%	25%	45%	95%	55%	60%	35%	15%	90%	85%

Lot 51 is a wide-bodied bull with whopping WW and YW EPDs. Raised by a first calf heifer.



52



53



55



NSF RESILIENT L 84

AAA# 20784069 • DOB: 2/25/2023 • BULL • ANGUS

SITZ STELLAR 726D
SITZ RESILIENT 10208
 SITZ MISS BURGESS 1856

	BW	WW	YW
Wt.	80	691	1369
Ratio	99	99	-
Jan. 2 Wt.	-	CE	**

ELLINGSON HOMEGROWN 6035

NSF DAPHNE F38
 NSF DAPHNE W245



	CED	BW	WW	YW	HP	MILK	\$EN	MARB	\$M	\$W	\$B	\$C
EPD	3	1.7	80	138	15.3	28	-15	0.31	90	80	130	259
%	75%	65%	10%	15%	20%	40%	50%	85%	3%	5%	70%	40%

Here's a stout, masculine stud! More than just phenotype, check out his high marks ranking in the top 15% of the breed in WW, YW, RADG, Claw, Angle, HP, RE, \$M and \$W. Dam is a bold sprung beauty with production records of 4@94, 4@101, 3@101 and 2@100 for birth, weaning, yearling and REA, respectively.



NSF RESILIENT L71

AAA# 20784081 • DOB: 2/24/2023 • BULL • ANGUS

SITZ STELLAR 726D
SITZ RESILIENT 10208
 SITZ MISS BURGESS 1856

	BW	WW	YW
Wt.	78	710	1256
Ratio	96	102	-
Jan. 2 Wt.	-	CE	***

H A F EFFECTIVE 1309

NSF BARBARA D105
 NSF BARBARA B121



	CED	BW	WW	YW	HP	MILK	\$EN	MARB	\$M	\$W	\$B	\$C
EPD	9	-0.5	58	101	14.1	31	10	1.02	83	71	114	231
%	30%	20%	70%	70%	30%	20%	10%	20%	10%	20%	85%	70%

This Resilient son is functionally designed with added volume. Dam is equally impressive both visually and production with weaning ratio of 5@103 and yearling ratio of 3@100.



NSF RESILIENT L88

AAA# 20784045 • DOB: 2/25/2023 • BULL • ANGUS

SITZ STELLAR 726D
SITZ RESILIENT 10208
 SITZ MISS BURGESS 1856

	BW	WW	YW
Wt.	74	720	1255
Ratio	101	103	-
Jan. 2 Wt.	-	CE	***

CONNELLY EMERALD

NSF DAPHNE J178
 NSF DAPHNE F196



	CED	BW	WW	YW	HP	MILK	\$EN	MARB	\$M	\$W	\$B	\$C
EPD	7	0.4	75	137	21.1	27	-23	0.79	93	72	153	291
%	45%	35%	20%	15%	1%	45%	70%	40%	2%	20%	40%	20%

Curve bender that covers all the bases. Raised by a first calf heifer.



NSF JORDAN L50

AAA# 20781984 • DOB: 2/22/2023 • BULL • ANGUS

MILL BRAE IDENTIFIED 4031
BALDRIDGE JORDAN
 BALDRIDGE ISABEL F047

	BW	WW	YW
Wt.	79	732	1414
Ratio	101	105	-
Jan. 2 Wt.	-	CE	***

SYDGEN ENHANCE

NSF EILEEN H23
 NSF EILEEN Z13



	CED	BW	WW	YW	HP	MILK	\$EN	MARB	\$M	\$W	\$B	\$C
EPD	13	0.7	68	119	12.7	27	-8	0.82	91	70	165	305
%	10%	40%	40%	40%	45%	45%	35%	35%	3%	20%	25%	10%

Stellar Jordan son that has incredible balance on paper and in person. The Eileen cow family has been superb for us, producing moderate birth weight cattle, with explosive growth, and awesome quality. Dam has a birth ratio of 2@95, weaning ratio of 2@105 and yearling ratio of 1@106.

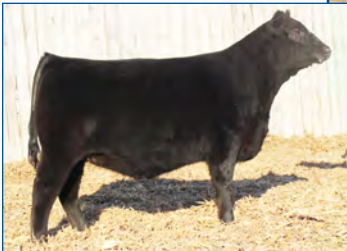


Baldridge Jordan
Sire of Lots 55 - 57.



NSF Emblynette H118
Maternal sister to Lot 56.
Sold to Rice River Angus, MN.

56



NSF Pleasant Pride D143
Full sib to the dam of Lot 57, sold for \$7,000 to 2 Ten Cattle Company.



57

NSF JORDAN L17



AAA# 20782239 • DOB: 2/19/2023 • BULL • ANGUS

MILL BRAE IDENTIFIED 4031
BALDRIDGE JORDAN
BALDRIDGE ISABEL F047

HF KODIAK 5R
NSF EMBLYNETTE D75
FB EMBLYNETTE 9148

	BW	WW	YW
Wt.	90	761	1382
Ratio	111	109	-
Jan. 2 Wt.	-	CE	**



	CED	BW	WW	YW	HP	MILK	\$EN	MARB	\$M	\$W	\$B	\$C
EPD	12	0.8	64	112	12.5	35	-14	0.94	76	72	152	273
%	10%	40%	50%	50%	50%	10%	50%	25%	20%	20%	40%	30%

What a show stopper! Unmatched phenotype with blending of powerful performance while offering the ability to improve the quality grade. Dam has a weaning ratio of 5@103.

NSF JORDAN L65



AAA# 20781986 • DOB: 2/23/2023 • BULL • ANGUS

MILL BRAE IDENTIFIED 4031
BALDRIDGE JORDAN
BALDRIDGE ISABEL F047

BASIN PAYWEIGHT 1682
NSF PLEASANT PRIDE H30
NSF PLEASANT PRIDE Z6

	BW	WW	YW
Wt.	90	787	1435
Ratio	115	113	-
Jan. 2 Wt.	-	CE	*



	CED	BW	WW	YW	HP	MILK	\$EN	MARB	\$M	\$W	\$B	\$C
EPD	2	4.1	85	143	11.2	32	-33	0.87	65	77	177	295
%	85%	95%	5%	10%	65%	15%	90%	30%	50%	10%	15%	15%

I don't know if you can make one with more volume and middle! This tank of a bull is super complete with breed leading performance. Dam is off to a great start with a weaning ratio of 2@109 and yearling ratio of 1@106.



58



59



60

NSF VIROQUA L91
 AAA# 20782064 • DOB: 3/1/2023 • BULL • ANGUS

WOODHILL PATENT
DAMERON VIROQUA
 WOODHILL EVERGREEN B124-F168

BAR S COWBOY UP 9344
NSF EILEEN J74
 NSF EILEEN Z13

	BW	WW	YW
Wt.	73	698	1347
Ratio	100	100	-
Jan. 2 Wt.	-	CE	***



	CED	BW	WW	YW	HP	MILK	\$EN	MARB	\$M	\$W	\$B	\$C
EPD	8	1.7	72	135	6.5	35	-24	0.82	52	73	173	276
%	35%	65%	25%	15%	95%	10%	75%	35%	85%	15%	20%	30%

We used Viroqua for his ability to sire cattle with monster curve bending performance, chart topping carcass traits, and phenotype that is second to none. L91 was raised by a first calf heifer.

NSF VIROQUA L61
 AAA# 20782162 • DOB: 2/23/2023 • BULL • ANGUS

WOODHILL PATENT
DAMERON VIROQUA
 WOODHILL EVERGREEN B124-F168

HA PRIME CUT 4493
NSF PHYLLIS G227
 NSF PHYLLIS A222

	BW	WW	YW
Wt.	85	759	1378
Ratio	106	109	-
Jan. 2 Wt.	-	CE	*



	CED	BW	WW	YW	HP	MILK	\$EN	MARB	\$M	\$W	\$B	\$C
EPD	11	1.6	70	123	10.7	33	-26	0.9	64	72	175	291
%	15%	60%	30%	35%	70%	15%	80%	30%	50%	20%	20%	20%

Lot 58 is unbounded with muscle shape and thickness. Dam is an ideal female with a picture perfect udder. Check out his balanced set of numbers!

NSF VIROQUA L81
 AAA# 20782266 • DOB: 2/25/2023 • BULL • ANGUS

WOODHILL PATENT
DAMERON VIROQUA
 WOODHILL EVERGREEN B124-F168

R5 MONUMENT 087
NSF DAPHNE Z244
 NSF DAPHNE U172

	BW	WW	YW
Wt.	88	812	1442
Ratio	110	116	-
Jan. 2 Wt.	-	CE	**



	CED	BW	WW	YW	HP	MILK	\$EN	MARB	\$M	\$W	\$B	\$C
EPD	7	-0.2	77	147	12.8	27	-28	0.58	62	72	146	251
%	45%	20%	15%	10%	45%	45%	80%	60%	55%	20%	50%	50%

Later maturing, larger framed bull that is a standout performance star. One of the biggest spread bulls in the offering. Dam is a great, consistent producer with a calving interval of 7@ 360 days and weaning ratio of 7@101.

NSF VIROQUA L80
 AAA# 20782255 • DOB: 2/25/2023 • BULL • ANGUS

WOODHILL PATENT
DAMERON VIROQUA
 WOODHILL EVERGREEN B124-F168

ELLINGSON HOMEGROWN 6035
NSF HOPE F48
 NSF HOPE W229

	BW	WW	YW
Wt.	79	691	1321
Ratio	98	99	-
Jan. 2 Wt.	-	CE	***



	CED	BW	WW	YW	HP	MILK	\$EN	MARB	\$M	\$W	\$B	\$C
EPD	9	1.1	62	123	11.8	34	-13	0.9	71	66	145	259
%	30%	50%	55%	35%	55%	10%	45%	30%	30%	30%	50%	40%

Here is an eye catching son of Viroqua, sporting a fault free design, balanced data and high \$ values.

NSF VIROQUA L112
 AAA# 20782263 • DOB: 3/12/2023 • BULL • ANGUS

WOODHILL PATENT
DAMERON VIROQUA
 WOODHILL EVERGREEN B124-F168

CONNELLY FINAL PRODUCT
NSF CRYSTAL B1
 NSF CRYSTAL 004 S55

	BW	WW	YW
Wt.	75	755	1307
Ratio	93	108	-
Jan. 2 Wt.	-	CE	***



	CED	BW	WW	YW	HP	MILK	\$EN	MARB	\$M	\$W	\$B	\$C
EPD	9	-0.7	69	127	16.7	39	-27	0.55	78	77	130	247
%	30%	15%	35%	25%	10%	2%	80%	65%	15%	10%	70%	55%

Here is a heifer bull extraordinaire. Stellar growth going to a weaning ratio of 108 and excellent foot scores. His dam has been a superb cow for us with birth ratio of 7@99, weaning ratio of 7@107 and yearling ratio of 4@102.



Dameron Viroqua
Sire of Lots 58 - 63.



NSF Monumental H5
Maternal brother to Lot 63.
Sold to Isane Farms.

63



NSF Belle F51
Maternal sister to Lot 64.
Sold to Jake Hegland.



64



NSF VIROQUA L29

AAA# 20782259 • DOB: 2/20/2023 • BULL • ANGUS

WOODHILL PATENT
DAMERON VIROQUA
WOODHILL EVERGREEN B124-F168

BASIN PAYWEIGHT 1682
NSF EILEEN E21
NSF EILEEN Z13

	BW	WW	YW
Wt.	85	771	1421
Ratio	105	111	-
Jan. 2 Wt.	-	CE	***



	CED	BW	WW	YW	HP	MILK	\$EN	MARB	\$M	\$W	\$B	\$C
EPD	13	0.7	78	149	12.8	31	-48	1	53	70	172	276
%	10%	40%	15%	5%	45%	20%	95%	20%	80%	20%	20%	30%

L29 is best described as a performance-oriented bull from a storied cow family. This production driven guy hits every mark from added size and scale, balanced number profile and carcass to top it off. His dam is a real beauty with birth ratio of 4@97, weaning ratio of 4@110, yearling ratio of 3@105 and IMF ratio of 3@120.



NSF STUNNER K188

AAA# 20670408 • DOB: 4/8/2022 • BULL • ANGUS

MUSGRAVE 316 STUNNER
MUSGRAVE 1676 STUNNER 178
MUSGRAVE EISA ERICA 906 1551

R5 MONUMENT 087
NSF BELLE Z235
NSF MISS BUSHWACKER S133

	BW	WW	YW
Wt.	79	719	-
Ratio	98	107	106
Jan. 2 Wt.	1775	CE	***



	CED	BW	WW	YW	HP	MILK	\$EN	MARB	\$M	\$W	\$B	\$C
EPD	9	-0.9	56	110	17.1	35	-26	0.68	49	60	144	236
%	30%	15%	75%	55%	10%	10%	80%	50%	90%	50%	50%	65%

One of our absolute favorites! Superior design, with bet the ranch calving ease, and out of a gorgeous cow. Dam is a very proven producer with birth ratio of 8@96, weaning ratio of 8@108 and yearling ratio of 4@102. **2-year old.**



65



NSF STUNNER K253

AAA# 20719826 • DOB: 4/24/2022 • BULL • ANGUS

MUSGRAVE 316 STUNNER
MUSGRAVE 1676 STUNNER 178
 MUSGRAVE EISA ERICA 906 1551

	BW	WW	YW
Wt.	87	693	-
Ratio	107	104	98
Jan. 2 Wt.	1620	CE	**

CONNEALY FINAL PRODUCT
NSF PRIDE B226
 NSF PRIDE Z210



	CED	BW	WW	YW	HP	MILK	\$EN	MARB	\$M	\$W	\$B	\$C
EPD	7	0.7	62	113	14.2	36	-38	0.62	28	63	148	220
%	45%	40%	55%	50%	30%	5%	95%	55%	95%	40%	45%	80%

Check out this balanced stud! He captures your attention with his presence. Equally impressive is his spectacular "no miss" dam. She has a weaning ratio of 8@106 and yearling ratio 6@107. **Non-virgin, exposed to cows summer of 2023. 2-year old.**



66



NSF STUNNER K266

AAA# 20670412 • DOB: 5/11/2022 • BULL • ANGUS

MUSGRAVE 316 STUNNER
MUSGRAVE 1676 STUNNER 178
 MUSGRAVE EISA ERICA 906 1551

	BW	WW	YW
Wt.	76	724	-
Ratio	98	108	104
Jan. 2 Wt.	1545	CE	***

BASIN PAYWEIGHT 1682
NSF SAHARA G230
 NSF SAHARA B266

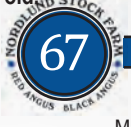


	CED	BW	WW	YW	HP	MILK	\$EN	MARB	\$M	\$W	\$B	\$C
EPD	9	0.3	63	114	14.4	32	-19	0.78	65	67	162	275
%	30%	30%	55%	50%	30%	15%	65%	40%	50%	30%	30%	30%

He has all the credentials for a herdsire; herd improving growth, eye appeal and backed by a female you want every cow to look like. Dam is an incredible young female with a weaning ratio of 3@102 and a yearling ratio of 2@106. **2-year old.**



67



NSF STUNNER L174

AAA# 20774458 • DOB: 4/4/2023 • BULL • ANGUS

MUSGRAVE 316 STUNNER
MUSGRAVE 1676 STUNNER 178
 MUSGRAVE EISA ERICA 906 1551

	BW	WW	YW
Wt.	87	727	1340
Ratio	111	104	-
Jan. 2 Wt.	-	CE	**

HA PRIME CUT 4493
NSF ZAPPA H229
 NSF ZAPPA C141



	CED	BW	WW	YW	HP	MILK	\$EN	MARB	\$M	\$W	\$B	\$C
EPD	8	0.6	78	129	11.5	28	-31	0.4	54	77	145	242
%	35%	35%	15%	25%	60%	40%	85%	80%	80%	10%	50%	60%

Super stylish Stunner son here! He is loaded with terrific performance and EPDs. Very cool, younger bull with a lot of potential. Keep the daughters.

NSF STUNNER L138

AAA# 20774262 • DOB: 3/17/2023 • BULL • ANGUS

MUSGRAVE 316 STUNNER
MUSGRAVE 1676 STUNNER 178
 MUSGRAVE EISA ERICA 906 1551

EXAR MONUMENTAL 6056B
NSF JOANNA H50
 NSF JOANNA F44

	BW	WW	YW
Wt.	84	695	1310
Ratio	107	100	-
Jan. 2 Wt.	-	CE	***

	CED	BW	WW	YW	HP	MILK	\$EN	MARB	\$M	\$W	\$B	\$C
EPD	11	0.8	76	133	11.4	24	-33	0.56	54	69	166	269
%	15%	40%	20%	20%	60%	70%	90%	65%	80%	25%	25%	35%

Stunner 178 stamps his progeny with curve bending performance, strong maternal strengths and phenomenal, good looks.

NSF BENCHMARK K192

AAA# 20719825 • DOB: 4/9/2022 • BULL • ANGUS

CONNEALY CONFIDENCE PLUS
MILL BRAE BENCHMARK 9016
 MILL BRAE FP JOANIE 3063

ELLINGSON HOMEGROWN 6035
NSF DAPHNE F196
 NSF DAPHNE B233

	BW	WW	YW
Wt.	67	683	-
Ratio	84	102	99
Jan. 2 Wt.	1540	CE	***

	CED	BW	WW	YW	HP	MILK	\$EN	MARB	\$M	\$W	\$B	\$C
EPD	10	-0.7	67	132	16.6	36	-33	0.63	61	69	146	250
%	20%	15%	40%	20%	10%	5%	90%	55%	60%	25%	50%	50%

The only Benchmark son in the sale, but he's sure to be a favorite, low BW and high growth. Dam has birth weight ratio of 3@90, weaning ratio of 3@104 and yearling ratio of 3@103. **2-year old.**



NSF UNITED L85

AAA# 20785324 • DOB: 2/26/2023 • BULL • ANGUS

CHESTNUT REDEMPTION 38
CHESTNUT UNITED
 NSF SCOTCH LADY E34

EXAR MONUMENTAL 6056B
NSF DAPHNE H37
 NSF DAPHNE W245

	BW	WW	YW
Wt.	65	744	1368
Ratio	84	107	-
Jan. 2 Wt.	-	CE	***



	CED	BW	WW	YW	HP	MILK	\$EN	MARB	\$M	\$W	\$B	\$C
EPD	15	-1.7	71	124	14	31	-19	0.86	69	78	150	264
%	3%	5%	30%	30%	30%	20%	65%	30%	35%	10%	40%	40%

This guy has a striking pattern and is very balanced. Check out his awesome ratios!



70



NSF UNITED K189

AAA# 20670409 • DOB: 4/8/2022 • BULL • ANGUS

CHESTNUT REDEMPTION 38
CHESTNUT UNITED
 NSF SCOTCH LADY E34

KESSLERS FRONTMAN R001
NSF PHYLLIS A222
 NSF PHYLLIS X258

	BW	WW	YW
Wt.	79	633	-
Ratio	98	95	98
Jan. 2 Wt.	1710	CE	***



	CED	BW	WW	YW	HP	MILK	\$EN	MARB	\$M	\$W	\$B	\$C
EPD	2	1.7	68	119	6.1	23	-18	0.31	40	61	141	223
%	85%	65%	40%	40%	95%	75%	60%	85%	95%	45%	55%	80%

Long sided son of the great United bull who is siring cattle with dominating phenotype and functionality. Dam has a calving interval of 8@363, birth weight ratio of 8@98, weaning weight ratio of 8@103 and yearling ratio of 6@101. 2-year old.



Chestnut United
 Sire of Lots 70-75, 103, 108, 109 & 111-113.



NSF UNITED K190

AAA# 20720714 • DOB: 4/8/2022 • BULL • ANGUS

CHESTNUT REDEMPTION 38
CHESTNUT UNITED
 NSF SCOTCH LADY E34

R B TOUR OF DUTY 177
NSF DAPHNE C236
 NSF DAPHNE U172

	BW	WW	YW
Wt.	80	683	-
Ratio	99	102	100
Jan. 2 Wt.	1580	CE	***

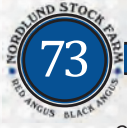


	CED	BW	WW	YW	HP	MILK	\$EN	MARB	\$M	\$W	\$B	\$C
EPD	9	-0.1	62	105	16.9	38	-23	0.54	68	72	126	231
%	30%	25%	55%	65%	10%	3%	70%	65%	40%	20%	75%	70%

Sure-fire heifer bull with added size and scale. 2-year old.



72



NSF UNITED K215

AAA# 20720680 • DOB: 4/14/2022 • BULL • ANGUS

CHESTNUT REDEMPTION 38
CHESTNUT UNITED
 NSF SCOTCH LADY E34

NSF CLEAR ICE C88
NSF MOLLY F280
 NSF MOLLY C269

	BW	WW	YW
Wt.	86	722	-
Ratio	107	108	108
Jan. 2 Wt.	1500	CE	**



	CED	BW	WW	YW	HP	MILK	\$EN	MARB	\$M	\$W	\$B	\$C
EPD	4	0.1	61	114	12.7	28	-17	0.53	59	61	139	239
%	70%	25%	60%	50%	45%	40%	55%	65%	65%	45%	55%	65%

Thick, stout made, and wide-bodied bull best describes this guy. Check out his stats with weaning and yearling ratio of 108 for both. Dam has a weaning ratio of 3@106 and yearling ratio of 3@109. 2-year old.



73



74



75



76

77 AAA# 20719772 • DOB: 4/18/2022 • BULL • ANGUS

FREYS COWBOY LOGIC
FREYS TRUE GRIT
FAR FAIR LADY 8094

	BW	WW	YW
Wt.	91	724	-
Ratio	112	108	102
Jan. 2 Wt.	1665	CE	*

HART ICON 1487
NSF ABIGAIL C152
NSF ABIGAIL Y215



	CED	BW	WW	YW	HP	MILK	\$EN	MARB	\$M	\$W	\$B	\$C
EPD	2	2.8	75	126	12.1	31	-32	0.37	60	70	117	212
%	85%	85%	20%	30%	55%	20%	90%	85%	65%	20%	85%	85%

High octane bull loaded with mass and dimensions. He will add weight to your next calf crop and out of bountiful producer with a weaning ratio of 5@106 and yearling ratio of 6@102. **2-year old.**

74 AAA# 20720716 • DOB: 4/16/2022 • BULL • ANGUS

CHESTNUT REDEMPTION 38
CHESTNUT UNITED
NSF SCOTCH LADY E34

	BW	WW	YW
Wt.	76	626	-
Ratio	94	94	97
Jan. 2 Wt.	1665	CE	***

MOHNEN LONG HAUL 502
NSF ZAPPA C141
NSF ZAPPA A292



	CED	BW	WW	YW	HP	MILK	\$EN	MARB	\$M	\$W	\$B	\$C
EPD	9	-0.6	49	83	11.2	32	5	0.48	74	61	108	214
%	30%	15%	90%	90%	65%	15%	10%	70%	25%	45%	90%	85%

Phenotypic standout out from the \$70,000 United bull. K229 has bet the ranch calving ease with a super productive dam. His dam has a weaning ratio of 6@106 and yearling ratio of 6@105. **2-year old.**

75 AAA# 20720717 • DOB: 4/19/2022 • BULL • ANGUS

CHESTNUT REDEMPTION 38
CHESTNUT UNITED
NSF SCOTCH LADY E34

	BW	WW	YW
Wt.	94	670	-
Ratio	116	100	105
Jan. 2 Wt.	1785	CE	*

H A F EFFECTIVE 1309
NSF CRYSTAL C156
NSF CRYSTAL A80



	CED	BW	WW	YW	HP	MILK	\$EN	MARB	\$M	\$W	\$B	\$C
EPD	1	2.5	72	129	8.3	28	-28	0.28	47	65	133	220
%	90%	80%	25%	25%	90%	40%	80%	90%	90%	35%	65%	80%

K239 has added substance, an eye-catching profile, and backed by a very productive cow. His dam has a weaning ratio of 7@103 and yearling ratio of 6@102. **2-year old.**

76 AAA# 20719917 • DOB: 4/14/2022 • BULL • ANGUS

G A R SURE FIRE 6404
GB FIREBALL 672
GB ANTICIPATION 432

	BW	WW	YW
Wt.	83	704	-
Ratio	102	105	103
Jan. 2 Wt.	1625	CE	***

R B TOUR OF DUTY 177
NSF TWITTER D16
NSF TWITTER X19



	CED	BW	WW	YW	HP	MILK	\$EN	MARB	\$M	\$W	\$B	\$C
EPD	9	1	61	110	14.9	31	-27	1.54	50	60	211	324
%	30%	45%	60%	55%	25%	20%	80%	3%	85%	50%	3%	5%

Here is an ideal breeding bull modest birth, added frame and back by a gorgeous female with a calving interval of 6@354. Check out his off the chart IMF EPD! **Non-virgin, exposed to heifers summer of 2023. 2-year old.**

78 AAA# 20785334 • DOB: 3/7/2023 • BULL • ANGUS

HA COWBOY UP 5405
BAR S COWBOY UP 9344
BAR S BEELINE 3035

	BW	WW	YW
Wt.	92	731	1345
Ratio	114	105	-
Jan. 2 Wt.	-	CE	*

SCHIEFELBEIN MAGNITUDE 340
TS EVELINE 30C
TS INTUITION EVELINE 26Y



	CED	BW	WW	YW	HP	MILK	\$EN	MARB	\$M	\$W	\$B	\$C
EPD	-2	2.4	47	82	11.3	28	-8	-0.07	38	46	61	117
%	95%	75%	90%	95%	65%	40%	35%	95%	95%	85%	95%	95%

Here is a real performer! Son of our Cowboy Up herd sire, we purchased from Bar S, KS. His progeny have extra performance and the daughters are awesome.



NSF COWBOY UP L108

AAA# 20774455 • DOB: 3/9/2023 • BULL • ANGUS

HA COWBOY UP 5405
BAR S COWBOY UP 9344
 BAR S BEELINE 3035

	BW	WW	YW
Wt.	73	732	1352
Ratio	94	105	-
Jan. 2 Wt.	-	CE	***

NSF HOMESTEAD F194

NSF UMA H106
 NSF UMA C260



	CED	BW	WW	YW	HP	MILK	\$EN	MARB	\$M	\$W	\$B	\$C
EPD	5	0.5	73	119	11	19	-24	0.26	49	64	92	168
%	60%	35%	25%	40%	65%	95%	75%	90%	90%	40%	95%	95%

Check this guy out! Captivating amount of shape, muscle and masculinity with awesome numbers.



79



NSF COWBOY UP K208

AAA# 20670411 • DOB: 4/13/2022 • BULL • ANGUS

HA COWBOY UP 5405
BAR S COWBOY UP 9344
 BAR S BEELINE 3035

	BW	WW	YW
Wt.	79	706	-
Ratio	104	100	100
Jan. 2 Wt.	1535	CE	***

NSF PAYLOADER F65

NSF PETAL H150
 NSF PLEASANT PRIDE Z6



	CED	BW	WW	YW	HP	MILK	\$EN	MARB	\$M	\$W	\$B	\$C
EPD	2	1.6	68	112	8.9	24	0	0.26	69	69	73	164
%	85%	60%	40%	50%	85%	70%	20%	90%	35%	25%	95%	95%

Well-rounded complete bull. **2-year old.**



NSF COWBOY UP K269

AAA# 20670407 • DOB: 5/16/2022 • BULL • ANGUS

HA COWBOY UP 5405
BAR S COWBOY UP 9344
 BAR S BEELINE 3035

	BW	WW	YW
Wt.	67	619	-
Ratio	83	93	94
Jan. 2 Wt.	1485	CE	***

GDAR LEUPOLD 298

NSF EILEEN E15
 NSF EILEEN C22



	CED	BW	WW	YW	HP	MILK	\$EN	MARB	\$M	\$W	\$B	\$C
EPD	12	-0.2	59	99	8.8	27	-11	0.4	62	63	100	192
%	10%	20%	65%	75%	85%	45%	40%	80%	55%	40%	95%	95%

Moderate with style and power in this smoothly designed bull. **2-year old.**





NSFR ADDY K41

RAAA# 4635951 • DOB: 02-24-2022 • COW • 100% AR

LJC MERLIN T179
WFL MERLIN 018A
 WFL COMMITMENT 042Y

	BW	WW	YW
Wt.	66	609	777
Ratio	85	97	92

BIEBER DEEP END B597
NSFR ADDY E42
 WSM MISS ADDY 480B



	ProS	HB	GM	CED	BW	WW	YW	MILK	HPG	STAY	MARB	REA
EPD	99	72	28	16	-3.3	70	98	33	13	15	0.54	0.16
%	35%	15%	73%	15%	24%	18%	51%	3%	22%	46%	25%	45%

Model bred heifer with added volume and mass, will make a front pasture type of female. Dam has an MPPA of 103. **Ultrasound confirmed bred with a calf due late April. P.E. to WSM Quarterback 076H (4296881) and NSFR Pathfinder K88 (4635931) from 06/02 – 08/26/2023.**



NSFR QUEEN K52

RAAA# 4635929 • DOB: 02-24-2022 • COW • 100% AR

LSF SRR TYSON 3025A
RED SSS TYCOON 225E
 RED SSS VALENTINE 335Z

	BW	WW	YW
Wt.	83	680	901
Ratio	107	108	107

LSF SAGA 1040Y
NSFR QUEEN D46
 NSFR MISS RED RANGER S57



	ProS	HB	GM	CED	BW	WW	YW	MILK	HPG	STAY	MARB	REA
EPD	63	32	31	9	0	74	116	22	10	13	0.28	0.19
%	88%	85%	66%	90%	83%	9%	14%	80%	83%	73%	83%	38%

Long sided, stellar body type from the Queen cow family who always adds pizzazz to their progeny. **Ultrasound confirmed A.I. bred to RREDS Blue Print H001 (4287851) with a calf due 03/16/2024. P.E. to NIO Sacrifice 2010 (4685555) from 06/10 – 08/26/2023.**



NSFR CAMILA K246

RAAA# 4636045 • DOB: 04-20-2022 • COW • 100% AR

BROWN REVELATION P7021
BROWN ORACLE B112
 BROWN MS P707 Y6648

	BW	WW	YW
Wt.	79	563	775
Ratio	115	99	99

PELTON WIDELOAD 78B
NSFR CAMILA G253
 NSFR TJ X36



	ProS	HB	GM	CED	BW	WW	YW	MILK	HPG	STAY	MARB	REA
EPD	74	36	38	11	-1.9	66	106	28	10	14	0.51	0.31
%	75%	79%	50%	70%	50%	30%	34%	34%	82%	65%	30%	18%

Functionally made, moderately designed, and destined to be an efficient producer. **Ultrasound confirmed bred with a calf due early March. P.E. to WSM Quarterback 076H (4296881) and NSFR Pathfinder K88 (4635931) from 06/02 – 08/26/2023.**



NSFR SIERRA K6

RAAA# 4636101 • DOB: 02-14-2022 • COW • 100% AR

LSF SRR TYSON 3025A
RED SSS TYCOON 225E
 RED SSS VALENTINE 335Z

	BW	WW	YW
Wt.	77	577	813
Ratio	ET	ET	ET

FEDDES GRANITE Z132
RUST MISS 412B
 C-BAR SIERRA Y27



	ProS	HB	GM	CED	BW	WW	YW	MILK	HPG	STAY	MARB	REA
EPD	85	44	41	13	-3	64	109	21	8	15	0.33	0.09
%	58%	64%	45%	50%	29%	37%	27%	87%	96%	49%	72%	62%

Here is a deep, soggy, direct daughter of 412B, she has made an incredible impact on our program. Flush brothers sell as lots 43 – 46. **Ultrasound confirmed bred with a calf due early April. P.E. to WSM Quarterback 076H (4296881) and NSFR Pathfinder K88 (4635931) from 06/02 – 08/26/2023.**



NSFR HI RB LS K106

RAAA# 4636095 • DOB: 03-02-2022 • COW • 100% AR

BROWN BLW FANTASTIC C5959
LSF SRR FANTASTIC 9206G
 LSF SRR DINA U8056 A3035

	BW	WW	YW
Wt.	74	568	827
Ratio	104	90	98

OVER DRAFT PICK 413D
KFRA H57 MS DRAFT PICK
 MS FUSION D74



	ProS	HB	GM	CED	BW	WW	YW	MILK	HPG	STAY	MARB	REA
EPD	100	48	52	13	-3.6	63	103	27	13	14	0.63	0.27
%	34%	57%	24%	48%	19%	43%	38%	41%	19%	66%	14%	23%

Beautifully constructed female whose dam has a near perfect udder. We purchased her dam from Kemen Red Angus. **Ultrasound confirmed A.I. bred to RREDS Blue Print H001 (4287851) with a calf due 03/08/2024. P.E. to WSM Quarterback 076H (4296881) and NSFR Pathfinder K88 (4635931) from 06/02 – 08/26/2023.**



NSFR SARAH K64

RAAA# 4635899 • DOB: 02-26-2022 • COW • 100% AR

LSF SRR TYSON 3025A
RED SSS TYCOON 225E
 RED SSS VALENTINE 335Z

	BW	WW	YW
Wt.	73	600	814
Ratio	94	96	97

SLGN YARDMASTER 125Y
NSFR SARAH S74
 NSFR SARAH S74



	ProS	HB	GM	CED	BW	WW	YW	MILK	HPG	STAY	MARB	REA
EPD	103	54	49	18	-4.3	67	110	20	11	14	0.66	-0.26
%	29%	44%	28%	2%	12%	28%	25%	93%	62%	57%	12%	99%

Here is a tremendous breeding piece with tons of potential. K64 looks good in person and on paper. **Ultrasound confirmed bred with a calf due early April. P.E. to WSM Quarterback 076H (4296881) and NSFR Pathfinder K88 (4635931) from 06/02 – 08/26/2023.**





NSFR VICTORIA K76

RAAA# 4636021 • DOB: 02-27-2022 • COW • 100% AR

LJC MERLIN T179
WFL MERLIN 018A
 WFL COMMITMENT 042Y

	BW	WW	YW
Wt.	74	659	881
Ratio	100	105	105

BIEBER DEEP END B597
NSFR VICTORIA G234
 NSFR VICTORIA A212



	ProS	HB	GM	CED	BW	WW	YW	MILK	HPG	STAY	MARB	REA
EPD	100	43	58	11	-5.3	77	121	31	14	12	0.64	0.34
%	33%	68%	15%	71%	5%	5%	9%	11%	12%	80%	13%	14%

Bold sprung female with tons of dimensions and a stellar broody appearance. Check out her breed topping EPDs. **Ultrasound confirmed bred with a calf due late March. P.E. to WSM Quarterback 076H (4296881) and NSFR Pathfinder K88 (4635931) from 06/02 – 08/26/2023.**



88



NSFR TJ K118

RAAA# 4635959 • DOB: 03-04-2022 • COW • 100% AR

GLACIER CHATEAU 744
RREDS BLUE PRINT H001
 RREDS PRIMROSE F835

	BW	WW	YW
Wt.	82	720	942
Ratio	105	115	112

BAR M SUN KING 5045
NSFR TJ E33
 NSFR TJ X36



	ProS	HB	GM	CED	BW	WW	YW	MILK	HPG	STAY	MARB	REA
EPD	118	85	33	13	-2.5	66	102	33	14	19	0.4	0.26
%	12%	4%	61%	42%	38%	31%	41%	4%	14%	6%	54%	25%

This girl has been a favorite her whole life! Stylish, feminine appearance and wide bodied. This cow family has been a great one for us. **Ultrasound confirmed A.I. bred to NIO American Freedom 1005 (4520391) with a calf due 03/08/2024. P.E. to WSM Quarterback 076H (4296881) and NSFR Pathfinder K88 (4635931) from 06/02 – 08/26/2023**



89



NSFR MTX K114

RAAA# 4636085 • DOB: 03-04-2022 • COW • 100% AR

LSF SRR TYSON 3025A
RED SSS TYCOON 225E
 RED SSS VALENTINE 335Z

	BW	WW	YW
Wt.	63	580	762
Ratio	91	92	90

3SCC DOMAIN A163
NSFR VICINITY H235
 LMG MTX 3032



	ProS	HB	GM	CED	BW	WW	YW	MILK	HPG	STAY	MARB	REA
EPD	85	53	31	16	-4.7	60	94	20	8	16	0.65	-0.01
%	59%	46%	65%	11%	9%	54%	60%	91%	96%	35%	12%	81%

Moderate framed, easy fleshing, with a ton of volume. The Tycoon progeny have a great "look" about them. **Ultrasound confirmed A.I. bred to Bieber Blue Chip H302 (4303789) with a calf due 03/08/2024. P.E. to WSM Quarterback 076H (4296881) and NSFR Pathfinder K88 (4635931) from 06/02 – 08/26/2023.**



NSFR CLAUDIA K125

RAAA# 4636047 • DOB: 03-06-2022 • COW • 100% AR

GLACIER CHATEAU 744
RREDS BLUE PRINT H001
 RREDS PRIMROSE F835

	BW	WW	YW
Wt.	75	605	818
Ratio	105	96	97

BIEBER DEEP END B597
NSFR CLAUDIA H76
 NSFR CLAUDIA X277



	ProS	HB	GM	CED	BW	WW	YW	MILK	HPG	STAY	MARB	REA
EPD	118	72	46	12	-2.2	78	129	26	13	17	0.42	0.32
%	12%	14%	34%	63%	44%	4%	4%	53%	21%	19%	49%	16%

Honest female with a feminine front and is rocking a powerful set of EPDs. We are excited about the future of the Blue Print daughters. **Ultrasound confirmed bred with a calf due mid-April. P.E. to NIO Sacrifice 2010 (4685555) from 06/02 – 08/26/2023.**



92



NSFR COPPERQUEEN K140

RAAA# 4635925 • DOB: 03-12-2022 • COW • 100% AR

5L BOURNE 117-48A
NSFR BOURNE H189
 RUST MISS 412B

	BW	WW	YW
Wt.	78	577	789
Ratio	100	92	94

BIEBER HARD DRIVE Y120
NSFR COPPERQUEEN D34
 NSFR COPPERQUEEN Z231



	ProS	HB	GM	CED	BW	WW	YW	MILK	HPG	STAY	MARB	REA
EPD	87	47	40	11	-1.1	69	110	25	16	13	0.37	0.2
%	55%	59%	47%	71%	65%	20%	25%	57%	3%	71%	63%	36%

Super complete with a captivating presence and bold sprung rib cage. **Ultrasound confirmed A.I. bred to RREDS Blue Print H001 (4287851) with a calf due 03/09/2024. P.E. to NIO Sacrifice 2010 (4685555) from 06/02 – 08/26/2023.**



NSFR VERDALE K183

RAAA# 4635895 • DOB: 04-04-2022 • COW • 100% AR

PIE STOCKMAN 4051
BIEBER CL STOCKMARKET E119
 BIEBER CL ADELLE 475C

	BW	WW	YW
Wt.	62	573	857
Ratio	86	101	110

BIEBER HARD DRIVE Y120
NELS VERDALE 13C
 NELS VERDALE 75A



	ProS	HB	GM	CED	BW	WW	YW	MILK	HPG	STAY	MARB	REA
EPD	87	33	54	16	-4.8	73	125	22	15	11	0.85	0.05
%	55%	83%	20%	11%	8%	11%	6%	83%	7%	89%	3%	69%

Here is a universal trendsetter! She blends style, substance and an unmatched number profile. **Ultrasound confirmed bred with a calf due early April.** P.E. to WSM Quarterback 076H (4296881) and NSFR Pathfinder K88 (4635931) from 06/02 – 08/26/2023.



NSFR SIERA K196

RAAA# 4636147 • DOB: 04-10-2022 • COW • 100% AR

GLACIER CHATEAU 744
RREDS BLUE PRINT H001
 RREDS PRIMROSE F835

	BW	WW	YW
Wt.	81	621	874
Ratio	ET	ET	ET

FEDDES GRANITE Z132
RUST MISS 412B
 C-BAR SIERA Y27



	ProS	HB	GM	CED	BW	WW	YW	MILK	HPG	STAY	MARB	REA
EPD	49	39	10	13	-2.5	68	109	27	10	14	-0.09	0.57
%	96%	74%	95%	44%	38%	24%	27%	35%	76%	59%	99%	2%

If only they all looked like her! She's a wide load. Presence, substance and the maternal masterpiece 412B cow to top it off. **Ultrasound confirmed A.I. bred to Bieber Jumpstart J137 (4463653) with a calf due 03/09/2024.** P.E. to WSM Quarterback 076H (4296881) and NSFR Pathfinder K88 (4635931) from 06/02 – 08/26/2023.



NSFR SKYLAR K160

RAAA# 4636093 • DOB: 03-21-2022 • COW • 100% AR

PELTON WIDELOAD 78B
NSFR CALL OF DUTY G244
 NSFR TJ X36

	BW	WW	YW
Wt.	70	576	822
Ratio	99	92	98

SYDGEN ENHANCE
NSFR SKYLAR H19
 NSFR MIMI A4



	ProS	HB	GM	CED	BW	WW	YW	MILK	HPG	STAY	MARB	REA
EPD	92	34	58	11	1.5	73	130	27	11	12	0.38	0.43
%	46%	82%	15%	76%	96%	12%	4%	38%	49%	80%	59%	7%

Black/Red Carrier. Flashy female with an intriguing pedigree going to our maternal Mimi cow family and the popular Syden Enhance bull. Look at her powerful numbers. **Ultrasound confirmed A.I. bred to RREDS Blue Print H001 (4287851) with a calf due 03/08/2024.** P.E. to WSM Quarterback 076H (4296881) and NSFR Pathfinder K88 (4635931) from 06/02 – 08/26/2023.



NSFR BLOOM K178

RAAA# 4636087 • DOB: 04-02-2022 • COW • 100% AR

PIE QUARTERBACK 789
WSM QUARTERBACK 076H
 WSM FOREVER EPIC 705E

	BW	WW	YW
Wt.	80	664	850
Ratio	113	106	101

HA PRIME CUT 4493
NSFR BLOOM H217
 NSFR TJ X36



	ProS	HB	GM	CED	BW	WW	YW	MILK	HPG	STAY	MARB	REA
EPD	120	60	60	12	-1.5	65	110	30	13	15	0.56	0.24
%	10%	32%	12%	63%	58%	35%	25%	13%	26%	49%	22%	29%

This girl combines the best of two worlds with the likes of Quarterback and the Black Angus bull Prime Cut. Her dam is a whale of producer and has a son selling as lot 20. **Ultrasound confirmed bred with a calf due early May.** P.E. to NIO Sacrifice 2010 (4685555) from 06/02 – 08/26/2023.



NSFR SCARLETT K232

RAAA# 4635991 • DOB: 04-17-2022 • COW • 100% AR

GLACIER CHATEAU 744
RREDS BLUE PRINT H001
 RREDS PRIMROSE F835

	BW	WW	YW
Wt.	51	508	758
Ratio	72	90	97

LSF MEW X-CITEMENT 6690D
NSFR SCARLETT F23
 NSFR TJ X36



	ProS	HB	GM	CED	BW	WW	YW	MILK	HPG	STAY	MARB	REA
EPD	84	77	7	18	-4.4	59	102	29	12	17	0.13	0.07
%	60%	10%	96%	4%	11%	59%	41%	25%	34%	21%	98%	65%

Tremendous female here! Probably the widest, thickest, easiest fleshing female in the offering. **Ultrasound confirmed A.I. bred to Bieber Jumpstart J137 (4463653) with a calf due 03/08/2024.** P.E. to WSM Quarterback 076H (4296881) and NSFR Pathfinder K88 (4635931) from 06/02 – 08/26/2023.



NSFR Lakota J29
Maternal sister to Lots 17, 18, 98, & 99.



NSFR Stockmarket L24
Maternal brother to Lot 98 & full brother to Lot 99. He sells as Lot 18.

98



U2 Lakota 54B
Dam of Lots 17, 18, 98, & 99.



99



NSFR LAKOTA K60

RAAA# 4636137 • DOB: 02-25-2022 • COW • 100% AR

RREDS SENECA 731C
RREDS PATHFINDER F811
RREDS KIMA D607

	BW	WW	YW
Wt.	72	644	887
Ratio	ET	ET	ET

RED MINBURN COPENHAGEN 3Y
RED U2 LAKOTA 54B
RED U-2 LAKOTA 318Y



	ProS	HB	GM	CED	BW	WW	YW	MILK	HPG	STAY	MARB	REA
EPD	74	76	-2	12	0.2	71	113	27	10	19	-0.02	0.27
%	75%	10%	99%	56%	86%	15%	19%	40%	68%	5%	99%	23%

Here is a headliner! This gorgeous female will be one of the first direct daughters to sell out of the great Lakota 54B in the US! **Ultrasound confirmed A.I. bred to NIO American Freedom 1005 (4520391) with a calf due 03/08/2024. P.E. to NIO Sacrifice 2010 (4685555) from 06/02 – 08/26/2023.**



NSFR LAKOTA L64

RAAA# 4802064 • DOB: 02-23-2023 • COW • 100% AR

PIE STOCKMAN 4051
BIEBER CL STOCKMARKET E119
BIEBER CL ADELLE 475C

	BW	WW	YW
Wt.	95	758	
Ratio	ET	ET	

RED MINBURN COPENHAGEN 3Y
RED U2 LAKOTA 54B
RED U-2 LAKOTA 318Y



	ProS	HB	GM	CED	BW	WW	YW	MILK	HPG	STAY	MARB	REA
EPD	108	50	58	12	0.7	84	139	26	13	13	0.5	0.45
%	22%	52%	15%	68%	91%	1%	1%	48%	23%	72%	32%	6%

Tremendous female here! Blends power, finesse and volume in perfect harmony. She will improve carcass merit while adding the maternal strengths of Lakota 54B, truly a unique female. Maternal sister sells as lot 98 and flush brothers sell as lots 17 & 18.



100



101



102



103



NSFR SIERA L13

RAAA# 4802034 • DOB: 02-18-2023 • COW • 100% AR

LASO BUCKET LIST E8G
NIO AMERICAN FREEDOM 1005
 NIO LAKOTA 9251

FEDDES GRANITE Z132
RUST MISS 412B
 C-BAR SIERA Y27

	BW	WW	YW
Wt.	74	649	
Ratio	ET	ET	



	ProS	HB	GM	CED	BW	WW	YW	MILK	HPG	STAY	MARB	REA
EPD	79	26	53	13	-1.9	73	114	26	11	11	0.49	0.57
%	69%	91%	22%	47%	50%	12%	18%	48%	48%	86%	34%	2%

Siera L13 is from a remarkable set of flush siblings, with her brothers selling as lot 7 & 8. This stellar individual covers all the bases and is a female to build a program around with her balance of phenotype and numbers.



NSFR HILTON L38

RAAA# 4802190 • DOB: 02-21-2023 • COW • 100% AR

GLACIER CHATEAU 744
RREDS BLUE PRINT H001
 RREDS PRIMROSE F835

BIEBER CL ATOMIC C218
DAHLKE MS HILTON 12F
 DAHLKE MS.HILTON 263C

	BW	WW	YW
Wt.	65	550	
Ratio	TWN	TWN	



	ProS	HB	GM	CED	BW	WW	YW	MILK	HPG	STAY	MARB	REA
EPD	64	42	22	12	-1.1	77	120	30	11	13	0.23	0.33
%	87%	69%	81%	66%	65%	5%	10%	15%	56%	73%	91%	15%

Here is a girl with superior conformation; up-headed appearance, wedge-shaped front end, she's an exceptional breeding piece. Hails from the Hilton cow family at Dahlke Red Angus. **Twin with a heifer.**



NSF INSTINCT K16

AAA# 20497944 • DOB: 02/20/2022 • COW • ANGUS

G A R SURE FIRE 6404
GB FIREBALL 672
 GB ANTICIPATION 432

COLEMAN CHARLO 0256
BLAIR'S INSTINCT 791C
 RSKY 6540 MS INSTINCT 0065

	BW	WW	YW
Wt.	72	636	852
Ratio	ET	ET	ET



	CED	BW	WW	YW	HP	MILK	\$EN	MARB	\$M	\$W	\$B	\$C
EPD	13	0.1	60	109	7.3	28	-2	0.88	61	65	160	269
%	10%	25%	60%	55%	95%	35%	20%	35%	60%	30%	30%	35%

Sale highlight here! Beautifully designed ET daughter of Instinct 791C, who we purchased for \$17,000 from Blair's.Ag. She is a maternal sister to the dam of lot 49. This gem has unmatched volume and mass. **Ultrasound confirmed A.I. bred to Virginia Tech Statesman (20085208) with a calf due 03/09/24. P.E. to NSF Point Taken K131 (20495794) from 06/02 – 08/26/2023.**



NSF INSTINCT K49

AAA# 20529871 • DOB: 2/24/2022 • COW • ANGUS

CHESTNUT REDEMPTION 38
CHESTNUT UNITED
 NSF SCOTCH LADY E34

HA PRIME CUT 4493
NSF INSTINCT G4
 BLAIR'S INSTINCT 791C

	BW	WW	YW
Wt.	79	680	931
Ratio	105	110	109



	CED	BW	WW	YW	HP	MILK	\$EN	MARB	\$M	\$W	\$B	\$C
EPD	4	1.6	80	137	13.1	24	-29	0.18	62	72	130	231
%	70%	60%	10%	15%	40%	70%	85%	95%	55%	15%	70%	70%

She is going to be a model Angus from her fleshing ability, functionality and eye appeal. **Ultrasound confirmed A.I. bred to Sitz Resilient 10208 (19057457) with a calf due 03/08/2024. P.E. to S Triump 2216 (20474394) from 06/02 – 08/26/23.**



NSF LADY ELBAN K72

AAA# 20497947 • DOB: 2/27/2022 • COW • ANGUS

G A R SURE FIRE 6404
GB FIREBALL 672
 GB ANTICIPATION 432

	BW	WW	YW
Wt.	73	586	818
Ratio	94	95	96

MOHNEN LONG HAUL 502
NSF LADY ELBAN C24
 NSF LADY ELBAN A13



	CED	BW	WW	YW	HP	MILK	\$EN	MARB	\$M	\$W	\$B	\$C
EPD	14	-0.4	60	108	8.4	33	-10	1.3	61	68	183	298
%	4%	20%	60%	55%	85%	10%	40%	10%	60%	25%	15%	15%

Angular and femininity, loaded with volume, and backed by a gorgeous cow with an impeccable udder quality. **Ultrasound confirmed bred with a calf due mid-April.** P.E. to S Triump 2216 (20474394) from 06/02 – 08/26/23.



104



NSF JOANNA K96

AAA# 20497929 • DOB: 3/1/2022 • COW • ANGUS

G A R SURE FIRE 6404
GB FIREBALL 672
 GB ANTICIPATION 432

	BW	WW	YW
Wt.	90	675	909
Ratio	119	110	107

BAR S SURE DEAL 5202
NSF JOANNA G106
 NSF JOANNA B27



	CED	BW	WW	YW	HP	MILK	\$EN	MARB	\$M	\$W	\$B	\$C
EPD	-4	4.4	75	129	10.4	27	-42	0.62	38	58	162	248
%	95%	95%	20%	25%	70%	45%	95%	60%	95%	50%	30%	55%

Remarkably well-made female with superior \$ values. Her stunning dam has a weaning ratio of 3@108. **Ultrasound confirmed bred with a calf due mid-April.** P.E. to NSF Point Taken K131 (20495794) from 06/02 – 08/26/2023.



106



NSF INSTINCT K107

AAA# 20497860 • DOB: 3/3/2022 • COW • ANGUS

FREYS COWBOY LOGIC
FREYS TRUE GRIT
 FAR FAIR LADY 8094

	BW	WW	YW
Wt.	70	667	945
Ratio	100	108	111

SYDGEN ENHANCE
NSF INSTINCT H9
 BLAIR'S INSTINCT 791C



	CED	BW	WW	YW	HP	MILK	\$EN	MARB	\$M	\$W	\$B	\$C
EPD	7	0.1	68	126	8.8	37	-23	0.4	63	74	137	241
%	45%	25%	35%	25%	85%	3%	75%	85%	55%	15%	60%	60%

Here is a bold sprung beauty! This phenomenal female has all the pieces to make a great one. Check out her EPDs. **Ultrasound confirmed A.I. bred to Sitz Resilient 10208 (19057457) with a calf due 03/09/2024.** P.E. to NSF Point Taken K131 (20495794) from 06/02 – 08/26/2023.



107





NSF CRYSTAL K40

AAA# 20529921 • DOB: 2/24/2022 • COW • ANGUS

CHESTNUT REDEMPTION 38
CHESTNUT UNITED
NSF SCOTCH LADY E34

MOHNEN SUBSTANTIAL 272
NSF CRYSTAL D59
NSF CRYSTAL Y55



	CED	BW	WW	YW	HP	MILK	\$EN	MARB	\$M	\$W	\$B	\$C
EPD	4	2.2	74	132	10.7	34	-32	0.49	47	72	132	218
%	70%	75%	20%	20%	65%	10%	90%	75%	90%	15%	70%	80%

Soft and super capacious designed female with a strong feminine pattern. Ultrasound confirmed A.I. bred to Virginia Tech Statesman (20085208) with a calf due 03/09/24. P.E. to NSF Point Taken K131 (20495794) from 06/02 – 08/26/2023.



110



112



NSF ROSE VERA K126

AAA# 20529928 • DOB: 3/6/2022 • COW • ANGUS

CHESTNUT REDEMPTION 38
CHESTNUT UNITED
NSF SCOTCH LADY E34

R5 MONUMENT 087
NSF ROSE VERA Z240
NSF ROSE VERA T127



	CED	BW	WW	YW	HP	MILK	\$EN	MARB	\$M	\$W	\$B	\$C
EPD	3	0.6	62	114	17.1	23	-18	0.45	64	56	153	262
%	75%	35%	55%	45%	10%	75%	60%	80%	50%	55%	40%	40%

Moderate and flashy made female whose dam has recorded nine progeny so far. Ultrasound confirmed A.I. bred to Virginia Tech Statesman (20085208) with a calf due 03/09/24. P.E. to NSF Point Taken K131 (20495794) from 06/02 – 08/26/2023.



NSF COWBOY UP K130

AAA# 20495915 • DOB: 3/9/2022 • COW • ANGUS

HA COWBOY UP 5405
BAR S COWBOY UP 9344
BAR S BEELINE 3035

SAC CONVERSATION
NSF GAMMER D236
NSF GAMMER Z213



	CED	BW	WW	YW	HP	MILK	\$EN	MARB	\$M	\$W	\$B	\$C
EPD	8	-0.4	60	101	12.6	25	-12	0.68	62	61	99	190
%	35%	20%	60%	70%	45%	60%	45%	55%	55%	40%	95%	95%

Intriguing female here, with her eye-catching profile, balance and fluid makeup. Ultrasound confirmed A.I. bred to Virginia Tech Statesman (20085208) with a calf due 03/08/24. P.E. to S Triump 2216 (20474394) from 06/02 – 08/26/23.



NSF CARESE K187

AAA# 20529913 • DOB: 4/7/2022 • COW • ANGUS

CHESTNUT REDEMPTION 38
CHESTNUT UNITED
NSF SCOTCH LADY E34

NSF CLEAR ICE C88
NSF CARESE F258
NSF CARESE C145



	CED	BW	WW	YW	HP	MILK	\$EN	MARB	\$M	\$W	\$B	\$C
EPD	7	0.4	59	106	17.2	34	-27	0.56	59	62	146	248
%	45%	30%	65%	60%	10%	10%	80%	70%	65%	40%	50%	55%

Lot 111 is attractively made with added length and extra style to burn, just how United stamps his progeny. Ultrasound confirmed bred with a calf due early April. P.E. to S Triump 2216 (20474394) from 06/02 – 08/26/23.



NSF HOLIDAY K193

AAA# 20529920 • DOB: 4/9/2022 • COW • ANGUS

CHESTNUT REDEMPTION 38
CHESTNUT UNITED
NSF SCOTCH LADY E34

BASIN PAYWEIGHT 1682
NSF HOLIDAY E44
NSF HOLIDAY A39



	CED	BW	WW	YW	HP	MILK	\$EN	MARB	\$M	\$W	\$B	\$C
EPD	7	2.4	90	153	12.2	31	-42	0.82	69	83	160	277
%	45%	75%	2%	4%	50%	20%	95%	40%	35%	3%	30%	30%

Her dam is an impeccable female with unmatched udder quality and design; K193 looks like she will follow in her footsteps. Ultrasound confirmed A.I. bred to Sitz Resilient 10208 (19057457) with a calf due 03/08/2024. P.E. to NSF Point Taken K131 (20495794) from 06/02 – 08/26/2023.



NSF TWITTER L5

AAA# 20785326 • DOB: 2/16/2023 • COW • ANGUS

CHESTNUT REDEMPTION 38
CHESTNUT UNITED
 NSF SCOTCH LADY E34

	BW	WW	YW
Wt.	85	635	
Ratio	106	102	

HA PRIME CUT 4493
NSF TWITTER G26
 NSF TWITTER X19



	CED	BW	WW	YW	HP	MILK	\$EN	MARB	\$M	\$W	\$B	\$C
EPD	1	3.9	75	130	9.4	14	-36	0.27	32	47	132	203
%	90%	95%	20%	20%	80%	95%	95%	90%	95%	85%	70%	90%

Great blend of finesse, power with extra dimensions. Dam is a beauty of a female with an efficient, easy keeping size.



113



NSF LADY ELBAN L114

AAA# 20774382 • DOB: 03/12/2023 • COW • ANGUS

HA COWBOY UP 5405
BAR S COWBOY UP 9344
 BAR S BEELINE 3035

	BW	WW	YW
Wt.	91	640	
Ratio	115	103	

HA PRIME CUT 4493
NSF LADY ELBAN G24
 NSF LADY ELBAN C24



	CED	BW	WW	YW	HP	MILK	\$EN	MARB	\$M	\$W	\$B	\$C
EPD	-1	4	60	104	9.1	25	-1	0.88	67	53	142	251
%	95%	95%	60%	65%	80%	60%	20%	35%	40%	65%	55%	50%

This balanced female stems from a high octane cow. Her dam has a weaning ratios of 3@106 and yearling ratios of 2@109.



114



NSF SAHARA L240

AAA# 20782260 • DOB: 4/23/2023 • COW • ANGUS

WOODHILL PATENT
DAMERON VIROQUA
 WOODHILL EVERGREEN B124-F168

	BW	WW	YW
Wt.	98	650	
Ratio	127	100	

MOHNEN SUBSTANTIAL 272
NSF SAHARA B266
 NSF SAHARA X239



	CED	BW	WW	YW	HP	MILK	\$EN	MARB	\$M	\$W	\$B	\$C
EPD	5	1.8	56	102	10.3	28	1	0.45	81	59	113	228
%	60%	65%	70%	70%	70%	35%	15%	80%	10%	50%	90%	75%

Functional and practical in her design with an eye-catching, sound structure. Dam is a consistent producer with a calving interval of 8@364.



115



COMMERCIAL RED *Angus* HEIFERS



116

COMMERCIAL RED ANGUS

Ultrasound confirmed A.I. bred to RREDS Blue Print H001 (4287851) with a calf due 03/09/2024. P.E. to WSM Quarterback 076H (4296881) and NSFR Pathfinder K88 (4635931) from 06/02 – 08/26/2023.



118

COMMERCIAL RED ANGUS

Ultrasound confirmed bred with a calf due mid-April. P.E. to WSM Quarterback 076H (4296881) and NSFR Pathfinder K88 (4635931) from 06/02 – 08/26/2023.



120

COMMERCIAL RED ANGUS

Ultrasound confirmed A.I. bred to Bieber Blue Chip H302 (4303789) with a calf due 03/09/2024. P.E. to WSM Quarterback 076H (4296881) and NSFR Pathfinder K88 (4635931) from 06/02 – 08/26/2023.



122

COMMERCIAL RED ANGUS

Ultrasound confirmed bred with a calf due early April. P.E. to NIO Sacrifice 2010 (4685555) from 06/02 – 08/26/2023.



117

COMMERCIAL RED ANGUS

Ultrasound confirmed bred with a calf due mid-April. P.E. to NIO Sacrifice 2010 (4685555) from 06/02 – 08/26/2023.



119

COMMERCIAL RED ANGUS

Ultrasound confirmed bred with a calf due late April. P.E. to WSM Quarterback 076H (4296881) and NSFR Pathfinder K88 (4635931) from 06/02 – 08/26/2023.



121

COMMERCIAL RED ANGUS

Ultrasound confirmed bred with a calf due mid-May. P.E. to WSM Quarterback 076H (4296881) and NSFR Pathfinder K88 (4635931) from 06/02 – 08/26/2023.



122

COMMERCIAL RED ANGUS

Ultrasound confirmed bred with a calf due early April. P.E. to NIO Sacrifice 2010 (4685555) from 06/02 – 08/26/2023.

COMMERCIAL BLACK *Angus* HEIFERS



123

COMMERCIAL BLACK ANGUS

Ultrasound confirmed bred with a calf due mid-May. P.E. to NSF Point Taken K131 (20495794) from 06/02 – 08/26/2023.



125

COMMERCIAL BLACK ANGUS

Ultrasound confirmed bred with a calf due early April. P.E. to S Triumph 2216 (20474394) from 06/02 – 08/26/23.



127

COMMERCIAL BLACK ANGUS

Ultrasound confirmed A.I. bred to Sitz Resilient 10208 (19057457) with a calf due 03/09/2024. P.E. to NSF Point Taken K131 (20495794) from 06/02 – 08/26/2023.



129

COMMERCIAL BLACK ANGUS

Ultrasound confirmed bred with a calf due late April. P.E. to NSF Point Taken K131 (20495794) from 06/02 – 08/26/2023.



124

COMMERCIAL BLACK ANGUS

Ultrasound confirmed bred with a calf due mid-April. P.E. to S Triumph 2216 (20474394) from 06/02 – 08/26/23.



126

COMMERCIAL BLACK ANGUS

Ultrasound confirmed A.I. bred to Sitz Resilient 10208 (19057457) with a calf due 03/16/2024. P.E. to S Triumph 2216 (20474394) from 06/10 – 08/26/23.



128

COMMERCIAL BLACK ANGUS

Ultrasound confirmed bred with a calf due early April. P.E. to NSF Point Taken K131 (20495794) from 06/02 – 08/26/2023.



130

COMMERCIAL BLACK ANGUS

Ultrasound confirmed bred with a calf due late March. P.E. to NSF Point Taken K131 (20495794) from 06/02 – 08/26/2023.

RED ANGUS *Guide* TO EPDS

ProS Profitability and Sustainability is an all-purpose index that predicts average economic differences in all segments in the beef supply chain. This index is a combination of the breeding objectives modeled in the HerdBuilder and GridMaster selection indexes. In this index, replacement heifers are retained from within the herd and all remaining progeny are fed out to slaughter and sold on a quality-based grid. Traits included in this index include calving ease, growth, HPG, STAY, Mature Weight, Dry Matter Intake and carcass traits. The resulting index is expressed in dollars per head born (Index/High Value).

HB HerdBuilder is a maternal selection index that predicts the economic differences of animals for traits that are important from conception through weaning. Expressed as dollars per head born, HB is calculated based on the scenario that bulls are mated to heifers and cows, replacement heifers are retained and all remaining progeny are marketed at weaning. Traits included in the HB index include Calving Ease Direct, Calving Ease Maternal, Weaning Weight, Milk, Mature Weight, Heifer Pregnancy and Stayability (Index/High Value).

GM..... GridMaster is a selection index that predicts the average economic difference of non-replacement calves through the post-weaning phase of production. GM places selection pressure on growth, feedyard performance and carcass traits. Expressed as dollars per head born, GM is calculated based on the scenario that progeny are fed out to slaughter and marketed on a quality-based carcass grid. Traits included in GM include Average Daily Gain, Carcass Weight, Dry Matter Intake, Marbling, Back Fat and Rib Eye Area (Index/High Value).

CEDCalving Ease Direct predicts differences in the percent of calves born unassisted out of 2-year-old dams. (Percent/High Value)

BWBirth Weight predicts differences in actual birth weight of progeny. (Pounds/Low Value)

WWWeaning Weight predicts differences in 205-day weaning weight. (Pounds/High Value)

YWYearling Weight predicts differences in 365-day yearling weight. (Pounds/High Value)

ADGAverage Daily Gain predicts differences in weight gain between 205 and 365 days of age. (Pounds/High Value)

DMIDry Matter Intake predicts differences in daily feed intake as measured in a feedlot during the post-weaning period. (Pounds/Low Value)

MILKMilk predicts differences in weaning weight attributed to the milking ability of the animal's daughters. (Pounds/High Value)

HPGHeifer Pregnancy predicts differences in the percent of daughters who are able to conceive and calve at 2 years of age following exposure to breeding. (Percent/High Value)

CEMCalving Ease Maternal predicts differences in the percent of daughters who are able to calve unassisted as 2-year-old heifers. (Percent/High Value)

STAY.....Stayability predicts differences in the ability of an animals' retained daughters to remain productive in the herd – calve every year – through 6 years of age. (Percent/High Value)

MARBMarbling predicts differences in marbling score – amount of intramuscular fat measured at the 13th rib. (Marbling Score Units/High Value)

YGYield Grade predicts differences in USDA Yield Grade, which is calculated using CW, REA and Fat. (Yield Grade Units/Low Value)

CWCarcass Weight predicts differences in actual hot carcass weight. (Pounds/High Value)

REARibeye Area predicts differences in square inches of ribeye area measured at the 13th rib.(Square Inches/High Value)

FATFat predicts differences in the depth of backfat measured between the 12th and 13th ribs. (Inches/Low Value)

AMERICAN ANGUS ASSOCIATION *Selection* TOOLS

Expected Progeny Difference (EPD), is the prediction of how future progeny of each animal are expected to perform relative to the progeny of other animals listed in the database. EPDs are expressed in units of measure for the trait, plus or minus.

Accuracy (ACC), is the reliability that can be placed on the EPD. An accuracy of close to 1.0 indicates higher reliability. Accuracy is impacted whether the animal has a genotype and the number of progeny and ancestral records included in the analysis.

Calving Ease Direct (CED), is expressed as a difference in percentage of unassisted births, with a higher value indicating greater calving ease in first-calf heifers. It predicts the average difference in ease with which a sire's calves will be born when he is bred to first-calf heifers.

Birth Weight (BW), expressed in pounds, is a predictor of a sire's ability to transmit birth weight to his progeny compared to that of other sires.

Weaning Weight (WW), expressed in pounds, is a predictor of a sire's ability to transmit weaning growth to his progeny compared to that of other sires.

Residual Average Daily Gain (RADG), feed efficiency expressed in pounds per day, is a predictor of a sire's genetic ability for postweaning gain in future progeny compared to that of other sires, given a constant amount of feed consumed.

Yearling Weight (YW), expressed in pounds, is a predictor of a sire's ability to transmit yearling growth to his progeny compared to that of other sires.

Yearling Height (YH), is a predictor of a sire's ability to transmit yearling height, expressed in inches, compared to the that of other sires.

Scrotal Circumference (SC), expressed in centimeters, is a predictor of the difference in transmitting ability for scrotal size compared to that of other sires.

MATERNAL

Heifer Pregnancy (HP), is a selection tool to increase the probability or chance of a sire's daughters becoming pregnant as first-calf heifers during a normal breeding season. A higher EPD is more favorable.

Calving Ease Maternal (CEM), is expressed as a difference in percentage of unassisted births, with a higher value indicating greater calving ease in first-calf daughters. It predicts the average ease with which a sire's daughters will calve as first-calf heifers when compared to daughters of other sires.

Maternal Milk (Milk), is a predictor of a sire's genetic merit for milk and

mothering ability in his daughters compared to daughters of other sires. In other words, it is that part of a calf's weaning weight attributed to milk and mothering ability.

Mature Weight (MW), expressed in pounds, is a predictor of the difference in mature weight of daughters of a sire compared to the daughters of other sires.

Mature Height (MH), expressed in inches, is a predictor of the difference in mature height of a sire's daughters compared to daughters of other sires.

MANAGEMENT

Docility (DOC), is expressed as a difference in yearling cattle temperament, with a higher value indicating more favorable docility in a sire's offspring compared to another sire.

Claw Set (Claw), is expressed in units of claw-set score, a lower EPD is more favorable, indicating a sire will produce progeny with more symmetrical, even and appropriately spaced toes.

Foot Angle (Angle), is expressed in units of foot-angle score, a lower EPD is more favorable, indicating a sire will produce progeny with an angle closer to 45 degrees at the pastern and appropriate toe length and heel depth.

Pulmonary arterial pressure EPD (PAP), is expressed in millimeters of Mercury (mmHg), with a lower EPD being more favorable indicating a sire should produce progeny with a lower PAP score to decrease the risk of progeny contracting high altitude disease most commonly experienced at 5,500 ft or greater in elevation.

CARCASS

Carcass Weight (CW), expressed in pounds, is a predictor of the differences in hot carcass weight of a sire's progeny compared to progeny of other sires.

Marbling (Marb), is expressed as a fraction of the difference in USDA marbling score of a sire's progeny compared to progeny of other sires.

Ribeye Area (RE), expressed in square inches, is a predictor of the difference in ribeye area of a sire's progeny compared to progeny of other sires.

Fat Thickness (Fat), expressed in inches, is a predictor of the differences in external fat thickness at the 12th rib (as measured between the 12th and 13th ribs) of a sire's progeny compared to progeny of other sires.

\$VALUE INDEXES

\$Value Indexes, reported in dollars per head, are multi-trait economic selection indexes where a higher values suggest more profit when comparing two individuals.

Maternal Weaned Calf Value (\$M), expressed in dollars per head, predicts profitability differences in progeny from conception to weaning by decreasing mature cow size and improving docility, foot structure and fertility while maintaining weaning weights consistent with current production.

Weaned Calf Value (\$W), expressed in dollars per head, provides the expected difference in future progeny preweaning performance from birth to weaning.

Cow Energy Value (\$EN), is expressed in dollar savings per cow each year due to lower cow maintenance energy requirements (due to lactation and body size) with a larger number being more favorable.

Feedlot Value (\$F), expressed in dollars per head, is the expected average difference in future progeny performance for postweaning feedlot merit (growth and feed efficiency) compared to progeny of other sires assuming producers retain ownership of cattle and sell on a carcass weight basis.

Grid Value (\$G), expressed in dollars per carcass, is the expected average difference in future progeny performance for carcass grid merit, including quality and yield grade attributes, compared to progeny of other sires.


Beef Value (\$B), expressed in dollars per carcass, represents the expected average differences in the progeny postweaning performance and carcass value compared to progeny of other sires. This index assumes commercial producers wean all male and female progeny, retain ownership of these animals through the feedlot and sell on a carcass merit grid.

Combined Value (\$C), an index, expressed in dollars per head, includes all traits that make up both \$M and \$B with the objective that commercial producers will replace 20% of their breeding females per year with replacement heifers retained within their own herd. The remaining cull heifer and steer progeny are then assumed to be sent to the feedlot where the producers retain ownership of those cattle and sell them on a quality-based carcass merit grid.



NORDLUND STOCK FARM, LLC
44946 151ST AVENUE
CLEARBROOK, MN 56 634

Presorted
First-Class Mail
US Postage
PAID
LivestockDirect

CATALOG DESIGN BY FMG 



NORDLUND STOCK FARM, LLC

27th Annual
PRODUCTION SALE
FEBRUARY - 17 - 2024

1:00 PM - AT THE FARM NEAR CLEARBROOK, MN

WWW.NORDLUNDSTOCKFARM.COM