

Belles 
OF THE GRADE

SCOTT ANGUS CATTLE • 10/23/24 • 2 P.M. • SELECT FEMALE SALE



MARLIN & KELLY SCOTT



Our family started in the embryo transfer business over 20 years ago. God blessed us along those years to identify and acquire special females that built the foundation for our family's herd today. We really appreciate the comradeship we've had with fellow cattlemen and cattlemen who have taken the time to visit and tour our

cattle operation. This is so important to us for so many reasons, but largely because they get to see first-hand what Scott Angus Cattle stands for. Raising cattle has helped us recognize our many life blessings and pushes us to care for them to the best of our ability! We strive to breed our cattle for sound structure, feet, udder quality, fertility, docility, moderate calving with eye appeal -- not to substitute great performance. Marlin's "C" words he likes to quote are Content Comfortable Cattle Equal Conception. This FIRST live auction sale marks a large turning point and foundation builder for our family operation and we plan to prove to the Angus community that we are a program that can be trusted in the highest level. To do this, we have decided to start out with a BANG on our female selection!



ABBY & A.J. ROPERS FAMILY

We sincerely welcome you to our third Scott Angus Cattle: Belles of the Grade - Select Female Sale. We are offering an exciting selection of our top end registered cow herd: virgin heifers, bred heifers, bred cows, elite embryo matings and our most influential donors. For the commercial buyer, we are also including a nice group of commercial bred replacement heifers and bred cows. Something for everyone!

SALE FEATURES:

*A dynamic set of Sitz Pride 200B progeny including virgin heifers sired by Connealy Craftsman, Musgrave Milestone, Raven Republic, and Baldrige Pappy. Also, a remarkable Panther bred heifer.

*Our premier donor, SAV Emblynette 6639. This Renown daughter produced some of the greatest natural bulls to ever walk our ranch and consistently top notch ET progeny. (selling flushing rights). Our favorite 6639 ET daughter sired by Craftsman is also a sale feature

*Two fancy SAV Blackcap May 4574 heifers: One 2023 summer born Robust daughter and one 2024 spring born Craftsman daughter (half interest) both with incredible eye appeal and powerhouse EPD profiles.

*Two powerful SAC Blackcap May 7316 bred heifers: a Stellar daughter and Resilient daughter are both pasture standouts and future profit centers.



SAM & STEPHANIE SCOTT FAMILY

Thank you for taking the time to look at our Belles of the Grade - Select Female Sale. The sale will take place at Scott Angus Cattle ranch in Belgrade, NE on Wednesday, October 23rd at 2 P.M. CST. The sale offering will be on display starting in the afternoon Tuesday, October 22nd and continuing up to sale time Wednesday. Delicious hot meals, desserts, and refreshments will be provided both days so we hope you can join us and enjoy everything Scott Angus Cattle has to offer! We truly appreciate your interest in our program and supporting our family's dream. Sincerely, Scott Angus Cattle family

- Marlin Scott**(308) 550-0202
- Kelly Scott**.....(308) 550-1726
- Sam Scott**.....(308) 550-1738
- Abby Ropers**..... (308) 550-0850
- A.J. Ropers**..... (308) 215-0172

SCOTTANGUSCATTLE.COM

SALE: AT THE RANCH 2 P.M. • VIDEOS ON DVAUCTION.COM

Catalog design by **Strommen Livestock Services** • Solen, ND • 701-290-3886

Join us for our **LIVE AUCTION**

Oct. 23, 2024 • 2 p.m.

20898 N 465 St, Belgrade, NE 68623

TERMS & CONDITIONS

AUCTIONEER: Matt Lowery308-750-6119

REPRESENTATIVES:

Randy Rasby, Livestock Media Group 308-539-6195

Will Harsh Angus Journal, 308-730-1396

NUTRITIONIST: D. Allen Stateler PH. D., Nutrition Services Associates (NSA)

Cell Phone402-992-2605

CATTLE VIEWING: Sale lots may be viewed Tuesday, October 22, 2024 starting late afternoon and October 23, 2024 the morning of the sale. The sale offering can also be viewed prior to sale day by appointment. Call Abby Ropers at 308-550-0850 or Kelly Scott at 308-550-1726

FOOD AND REFRESHMENTS: Will be available Tuesday evening and sale day at 11:30 a.m. with the sale starting at 2 PM.

ACCOMMODATIONS:

Cardinal Inn, Albion, NE402-395-6106

Fullerton Inn, Fullerton, NE 308-536-2699

Barn Yard, Fullerton, NE.....402-430-8761 thebarnyardescape.com

Broken Arrow Wilderness, (cabins), Fullerton, NE308-536-2441

AIR TRAVEL:

Albion, NE - 20 minutes available for private planes. (Please contact us to coordinate a ride)

Grand Island Regional Airport - 60 minutes daily flights from Dallas/Fort Worth
Omaha Eppley Airfield - 2.5 hours with flights available by all major airlines

TRUCKING: Delivery arrangement for females are at buyers' expense.

Nathan Schuster, Six Diamond Cattle, cell phone 602-622-8497, will be available for trucking needs.

LIABILITY: All persons who attend the Belles of the Grade Select Female Sale, do so at their own risk, and Scott Angus Cattle assumes no liability, legal or otherwise, for any accidents, which may occur.

HEALTH: All cattle are accompanied by proper health certificates for shipment and have had a complete vaccination program.

INSURANCE: SAC recommends buyers insure their purchases for safe delivery and after. Lashea Bickel, Dakota Ag Insurance, will be available. Cell Phone 605-530-0872

GENETIC DEFECTS: All lots are free of all known genetic conditions monitored by the American Angus Association.

ULTRASOUND PREGNANCY TEST: All bred females have been ultrasound pregnancy tested by Countryside Vet Clinic, Fullerton NE. Sex of the fetus has been determined to the best of our ability, but is not guaranteed. Frozen Embryos: Frozen embryos selling are stored at Scott Angus Cattle ranch, Belgrade, NE. Shipping is buyer's responsibility.

HALF INTEREST FEMALE TERMS: Scott Angus Cattle retains rights to every other embryo collection on half interest females. Scott Angus Cattle will keep possession of the female and be responsible for feed and care of her. Natural calves from sale lot will be owned 50/50 by buyer and SAC. Buyer will pay half of calf's overhead expenses. SAC and buyer will decide whether to sell their half ownership to the other party or split sale proceeds 50/50 if sold on SAC production sale. ET service provider bills charges to each owner for the embryos they receive. Each owner is responsible for their own insurance and no owner is liable for death or injury of the animal or embryos. Half interest virgin heifer is eligible for embryo collection after ultrasound confirms she's bred.

PAYMENT TERMS: All cattle will sell under the recommended terms and conditions of the American Angus Association. Payment will be made on sale or within 30 days unless other arrangements have been made.

ONLINE BIDDING: The sale will be broadcast live on DVAAuction.com with real time and proxy bidding available. Videos will be posted two weeks prior to the sale. Please sign up to bid at least 24 hours in advance of the sale. If you need assistance, call Sara Kuchera, 308-520-5084 or email support@dvauction.com. Scan the code to the right to view the videos



PHONE BIDDING: Phone bids will be handled in a confidential manner. If you are unable to attend the sale, please contact: Marlin Scott 308-550-0202, Kelly Scott 308-550-1726, Abby Ropers 308-550-0850, Sam Scott 308-550-1738 or A.J. Ropers 308-215-0172. Please note that our sale barn cell service is spotty so please call at least an hour in advance with your bid.



Allen Stateler, Ph.D.
Consulting Nutritionist
Nutrition Service Associates (NSA)
402-992-2605

Welcome to the Scott Angus Cattle Open House and the Third Annual Belles of the Grade Female Sale. I think you will agree that the Scott Angus family has put together an exciting set of Angus females for this first live auction sale. As the consulting nutritionist, I strive to develop optimal nutrition and management programs to match and express the genetic potential of the cattle while giving special attention to safeguarding soundness and reproductive longevity. At Scott Angus, the mantra is "cattle should never have a bad day" and every effort is made to uphold that ideal.

Nutritional Philosophy - The nutritional treatment of breeding stock from conception to breeding can have a profound effect on their lifetime potential. Nutritional influences on future health and productivity have been traced as far back as early embryonic development; a concept termed "fetal programming". That is why we focus not only on the nutrient requirements of the cow throughout her life cycle, but also the nutritional factors that

affect gene expression of economically important traits in the developing calf. From conception to turnout, we focus on expressing the genetic potential of the cattle without compromising structural soundness and breeding performance.

Female Development - To properly develop breeding stock, we pay special attention to their energy, protein, trace mineral, and vitamin requirements. Females are developed primarily on grass and on a high-roughage ration when needed. Particular attention is given to optimal vitamin and trace mineral supplementation to promote proper reproductive development and ensure reproductive longevity. We think that you will agree that our nutritional philosophy has produced an exceptional set of females that are ready to go to work for you. Buy with confidence.

D. Allen Stateler, Ph.D.
Consulting Nutritionist
Nutrition Service Associates (NSA)
402.992.2605



Scott
ANGUS
CATTLE



Belles
OF THE GRADE
Sitz Pride 200B
Progeny

Panther Brcd Heifer (1)
Republic Summer Heifers (3)
Craftsman, Milestone, and Pappy Virgin Heifers (7)



Baldrige Pappy - Sire of Lot 1



Sitz Pride 200B - Dam of Lot 1,2,3,4,5,6,7,8,9,10,11

SAC PRIDE 4208
 BD:1/3/2024 Reg #: 20968898 Tattoo: 4208
 Hoover No Doubt #Mogck Bullseye
Baldrige Pappy Miss Blackcap Ellston J2
 Baldrige Isabel B061 #G A R Prophet
 Baldrige Isabel Y69
 #Connealy Final Product Connealy Product 568
SITZ Pride 200B #Ebonista of Conanga 471
 #Sitz Pride 308Y #Sitz Upward 307R
 #Sitz Pride 44P

ANGUS
 Powered by MoGen GeneSeek

| | |
|------------------|-------|
| BW | 94 |
| BWR | 100 |
| WW | 742 |
| ADJ 205 | 715 |
| WWR | 100 |
| Dam's Production | 5/105 |

| CEB | BW | WW | YW | Milk | SC | Marb | REA | Fat | HP | Claw | Angle | SM | SC |
|-----|-----|----|-----|------|------|------|-----|-------|------|------|-------|-----|-----|
| -1 | 3.3 | 83 | 142 | 32 | 1.37 | 0.95 | 0.7 | 0.049 | 12.8 | 0.46 | 0.48 | 66 | 275 |
| 78% | 83% | 8% | 13% | 17% | 15% | 20% | 39% | 87% | 48% | 40% | 63% | 45% | 35% |

This Pappy heifer is one of a kind! She displays great volume, spring of rib, and muscle mass. Her two powerhouse flush brothers will be leading the SAC Production Sale this spring so we predict she'll be a powerful bull-maker and valuable maternal asset to your cowherd. Also, earning the Certified Beef Brand!



200B Virgin Heifers



SAC Pride 4202 • Lot 2

2 SAC PRIDE 4202

BD: 1/9/2024 Reg #: 20968132 Tattoo: 4202

Sitz Resilient 10208
Connealy Craftsman
 #Black Cathy of Conanga 8521

#Sitz Stellar 726D
 Sitz Miss Burgess 1856
 Connealy Niobrara 5451
 Black Carla of Conanga 450
 Connealy Product 568
 #Ebonista of Conanga 471
 #Sitz Upward 307R
 #Sitz Pride 44P

#Connealy Final Product
SITZ Pride 200B
 #Sitz Pride 308Y

ANGUS
 GS
 Powered by Hoogen GenesSeek

| | |
|------------------|-------|
| BW | 92 |
| BWR | 100 |
| WW | 807 |
| ADJ 205 | 792 |
| WWR | 100 |
| Dam's Production | 5/105 |

| CED | BW | WW | YW | Milk | SC | Marb | REA | Fat | HP | Claw | Angle | SM | SC |
|-----|-----|-----|-----|------|------|------|------|-------|------|------|-------|-----|-----|
| -1 | 3.4 | 74 | 134 | 34 | 1.22 | 0.82 | 0.47 | 0.069 | 17.2 | 0.44 | 0.51 | 83 | 266 |
| 59% | 64% | 44% | 46% | 12% | 29% | 21% | 59% | 83% | 7% | 50% | 87% | 10% | 40% |

Selling Choice of Lots 2, 3 and 4

The cream of the crop! This elite trio of flush sisters has top of the line performance, fertility, and carcass quality. All three have earned the certified beef brand and top marks in \$M!

Their dam, Sitz Pride 200B is one of the breed's elite foundation females. She's highly proven for elite weaning weight EPD, Yearling Weight EPD, hot carcass Weight EPD, and \$Weaning calf value index along with her superior Ribeye area measure EPD, percent heifer pregnancy EPD and \$Feedlot value index. 200B is best known as the dam of the \$50k Sitz Stellar 726D. He's the top 1% in Foot shape, Foot Angle, and hair shedding EPD and has become a cornerstone sales leader for ABS. In March 2024, at Sitz Angus Ranch, MT, her ET son out of Man In Black, Sitz Eternity 739L, sold to ST Genetics for \$220,000.



Sitz Pride 200B - Dam of Lot 1,2,3,4,5,6,7,8,9,10,11

Craftsman has built an impressive sales record and progeny who are highlighting pasture tours and topping sales. His progeny are powerfully made, have expressive muscle, are long bodied, with explosive growth and tremendous balance and correctness. One of the most unique and adaptable maternal bulls in the breed when you consider he ranks in the top 20% of the breed for Heifer Pregnancy, Milk, Docility, Claw and Angle, PAP, and Hair Shedding. Don't overlook his efficiency.

Craftsman is one of the best for moderate DMI combined with WW and YW EPDs in the top 10% of the breed. An index leader, he ranks in the top 1% of the population for \$Maternal and \$Weaning and top 2% for \$Combined.



SAC Pride 4201 • Lot 3

Connealy Craftsman • Sire of Lot Lot 2,3,4

3 SAC PRIDE 4201



BD:1/2/2024 Reg #: 20968131 Tattoo: 4201
 Sitz Resilient 10208 #Sitz Stellar 726D
Connealy Craftsman Sitz Miss Burgess 1856
 #Black Cathy of Conanga 8521 Connealy Niobrara 5451
 Black Carla of Conanga 450
 #Connealy Final Product Connealy Product 568
SITZ Pride 200B #Ebonista of Conanga 471
 #Sitz Pride 308Y #Sitz Upward 307R
 #Sitz Pride 44P

| | |
|------------------|-------|
| BW | 95 |
| BWR | 100 |
| WW | 787 |
| ADJ 205 | 756 |
| WWR | 100 |
| Dam's Production | 5/105 |

| CED | BW | WW | YW | Milk | SC | Marb | REA | Fat | HP | Claw | Angle | SM | SC |
|-----|-----|-----|-----|------|------|------|------|-------|----|------|-------|----|-----|
| -2 | 2.5 | 78 | 140 | 35 | 1.01 | 1.11 | 0.67 | 0.064 | 21 | 0.41 | 0.52 | 87 | 297 |
| 75% | 69% | 27% | 21% | 8% | 44% | 9% | 37% | 65% | 1% | 23% | 80% | 5% | 20% |

Selling Choice of Lots 2, 3 and 4

4 SAC PRIDE 4200



BD:1/3/2024 Reg #: 20968130 Tattoo: 4200
 Sitz Resilient 10208 #Sitz Stellar 726D
Connealy Craftsman Sitz Miss Burgess 1856
 #Black Cathy of Conanga 8521 Connealy Niobrara 5451
 Black Carla of Conanga 450
 #Connealy Final Product Connealy Product 568
SITZ Pride 200B #Ebonista of Conanga 471
 #Sitz Pride 308Y #Sitz Upward 307R
 #Sitz Pride 44P

| | |
|------------------|-------|
| BW | 88 |
| BWR | 100 |
| WW | 745 |
| ADJ 205 | 718 |
| WWR | 100 |
| Dam's Production | 5/105 |

| CED | BW | WW | YW | Milk | SC | Marb | REA | Fat | HP | Claw | Angle | SM | SC |
|-----|-----|-----|-----|------|------|------|------|-------|------|------|-------|----|-----|
| 2 | 1.7 | 85 | 146 | 30 | 0.54 | 0.88 | 0.62 | 0.048 | 19.4 | 0.35 | 0.43 | 91 | 280 |
| 66% | 72% | 12% | 25% | 33% | 77% | 15% | 58% | 77% | 1% | 7% | 28% | 3% | 30% |

Selling Choice of Lots 2, 3 and 4



SAC Pride 4200 • Lot 4





SAC Pride 4206 • Lot 5

5 SAC PRIDE 4206

ANGUS GS
Powered by *Neogen* GenSeek

BD: 1/18/2024 Reg #: 20971298 Tattoo: 4206
 Musgrave Jumbo Musgrave 316 Colossal 137
Musgrave Milestone Musgrave MO Barbara 947
 #Pine Coulee Forever Lady E47 #S A V Renown 3439
 Pine Coulee Forever Lady X95
 #Connealy Final Product Connealy Product 568
SITZ Pride 200B #Ebonista of Conanga 471
 #Sitz Pride 308Y #Sitz Upward 307R
 #Sitz Pride 44P

| | |
|------------------|-------|
| BW | 94 |
| BWR | 100 |
| WW | 807 |
| ADJ 205 | 816 |
| WWR | 100 |
| Dam's Production | 5/105 |

| CED | BW | WW | YW | Milk | SC | Marb | REA | Fat | HP | Claw | Angle | SM | SC |
|-----|-----|----|-----|------|------|------|-----|-------|------|------|-------|-----|-----|
| 0 | 4.2 | 93 | 165 | 23 | 1.08 | 0.45 | 0.7 | 0.059 | 16.9 | 0.31 | 0.39 | 78 | 284 |
| 79% | 91% | 6% | 4% | 72% | 39% | 56% | 40% | 89% | 9% | 5% | 27% | 15% | 25% |

Selling Choice of Lots 5, 6 and 7 - This group of voluminous Milestone flush sisters has shown potential from the very beginning and are in the top ten weaning weights of their calf group. You can expect great power, superb fertility, and heavy weaning weights from their progeny.

Their Final Product Dam, Sitz Pride 200B, is the "Queen Bee" cornerstone female in the SAC herd with 5 progeny that record an average birth ratio of 95 on four natural calves with average weaning ratio of 105. This highly proven donor in the prime of her life has 95+ progeny genomic tested to provide exceptional accuracy to her elite genomic-enhanced EPD profile.

Musgrave Milestone was chosen for his added length and balance. He is a structurally sound and a perfectly footed powerhouse bull. His well-rounded EPD profile excels in \$M, \$W, WW, YW and HP, as well as both hoof EPDs. Early calf reports have been strong, as his calves have tremendous vigor at birth and are looking the part. Consider Musgrave Milestone to advance your genetics for the future of the Angus breed. Milestone was the \$120,00 high selling bull of the 2022 Musgrave sale.



Musgrave Milestone - Sire of Lot 5,6,7





SAC Pride 4205 • Lot 6

6

SAC PRIDE 4205

BD:1/20/2024

Reg #: 20971297

Tattoo: 4205

Musgrave Jumbo
Musgrave Milestone

#Pine Coulee Forever Lady E47

#Connealy Final Product

SITZ Pride 200B

#Sitz Pride 308Y

Musgrave 316 Colossal 137

Musgrave MO Barbara 947

#S A V Renown 3439

Pine Coulee Forever Lady X95

Connealy Product 568

#Ebonista of Conanga 471

#Sitz Upward 307R

#Sitz Pride 44P

ANGUS GS
Powered by Neogen GenesSeek

| | |
|------------------|-------|
| BW | 83 |
| BWR | 100 |
| WW | 720 |
| ADJ 205 | 733 |
| WWR | 100 |
| Dam's Production | 5/105 |

| CED | BW | WW | YW | Milk | SC | Marb | REA | Fat | HP | Claw | Angle | SM | SC |
|-----|-----|-----|-----|------|------|------|------|-------|-----|------|-------|-----|-----|
| 1 | 2.5 | 80 | 143 | 28 | 1.47 | 0.34 | 0.82 | 0.048 | 15 | 0.4 | 0.45 | 71 | 264 |
| 72% | 61% | 17% | 17% | 47% | 18% | 74% | 21% | 70% | 16% | 21% | 42% | 30% | 45% |

Selling Choice of Lots 5, 6 and 7

7

SAC PRIDE 4203

BD:1/12/2024

Reg #: 20971292

Tattoo: 4203

Musgrave Jumbo
Musgrave Milestone

#Pine Coulee Forever Lady E47

#Connealy Final Product

SITZ Pride 200B

#Sitz Pride 308Y

Musgrave 316 Colossal 137

Musgrave MO Barbara 947

#S A V Renown 3439

Pine Coulee Forever Lady X95

Connealy Product 568

#Ebonista of Conanga 471

#Sitz Upward 307R

#Sitz Pride 44P

ANGUS GS
Powered by Neogen GenesSeek

| | |
|------------------|-------|
| BW | 92 |
| BWR | 100 |
| WW | 734 |
| ADJ 205 | 727 |
| WWR | 100 |
| Dam's Production | 5/105 |

| CED | BW | WW | YW | Milk | SC | Marb | REA | Fat | HP | Claw | Angle | SM | SC |
|-----|-----|-----|-----|------|------|------|-----|-------|------|------|-------|-----|-----|
| 10 | 1.7 | 80 | 142 | 34 | 1.35 | 0.4 | 0.7 | 0.048 | 19.1 | 0.49 | 0.5 | 86 | 257 |
| 32% | 63% | 12% | 13% | 8% | 19% | 70% | 49% | 82% | 5% | 52% | 70% | 10% | 50% |

Selling Choice of Lots 5, 6 and 7



SAC Pride 4203 • Lot 7



SAC PRIDE 3204

ANGUSGS
Powered by *Myogen* GeneSeek

BD: 5/24/2023 Reg #: 20715475 Tattoo: 3204
 E&B Plus One #Connealy Confidence Plus
Raven Republic 1564 #E&B Lady 1023 Precision 936
 Sitz Emma E 2738 #Connealy Thunder
 Sitz Emma E 2253
 Connealy Product 568
SITZ Pride 200B #Ebonista of Conanga 471
 #Sitz Pride 308Y #Sitz Upward 307R
 #Sitz Pride 44P

| | |
|------------------|-------|
| BW | 60 |
| BWR | 100 |
| WW | 625 |
| ADJ 205 | 670 |
| WWR | 100 |
| Dam's Production | 5/105 |

| CED | BW | WW | YW | Milk | SC | Marb | REA | Fat | HP | Claw | Angle | SM | SC |
|-----|------|-----|-----|------|------|------|------|-------|------|------|-------|----|-----|
| 8 | -0.3 | 70 | 121 | 23 | 0.77 | 0.52 | 0.23 | 0.111 | 18.2 | 0.37 | 0.48 | 93 | 238 |
| 18% | 18% | 45% | 44% | 72% | 67% | 56% | 83% | 99% | 2% | 11% | 54% | 2% | 70% |

Selling Choice of Lots 8, 9 and 10.

Fantastic 2023 summer born flush sisters from the 200B Pride family, destined to be a source of quality and profit for years to come. They combine beautiful phenotype and breed-leading numbers and sport a very favorable \$M and BW to YW spread. Her beautiful nice patterned 2022 born Panther heifer was the sale highlight of last year's Belles of the Grade sale sold half interest for \$24.3K.

Their sire, Raven Republic 1564, is known as the cowboy's republic and is arguably the most powerful son of PLUS ONE in the industry. His phenotype grabs you for being bold sprung with tremendous power and body. Republic's cow family is all things fertility, his dam is the foundation and paternal granddam to the elite \$Maternal sire Sitz Logo 12964.



Raven Republic 1564 - Sire of Lot Lots 8,9,10



200B Raven Republic Summer Heifers





SAC Pride 3205 • Lot 9

9 SAC PRIDE 3205

BD:5/25/2023 Reg #: 20960722 Tattoo: 3205

E&B Plus One
Raven Republic I564
 Sitz Emma E 2738

#Connealy Final Product
SITZ Pride 200B
 #Sitz Pride 308Y

#Connealy Confidence Plus
 #E&B Lady 1023 Precision 936
 #Connealy Thunder
 Sitz Emma E 2253
 Connealy Product 568
 #Ebonista of Conanga 471
 #Sitz Upward 307R
 #Sitz Pride 44P



| | |
|------------------|-------|
| BW | 73 |
| BWR | 100 |
| WW | 685 |
| ADJ 205 | 736 |
| WWR | 100 |
| Dam's Production | 5/105 |

10 SAC PRIDE 3202

BD:5/20/2023 Reg #: 20715472 Tattoo: 3202

E&B Plus One
Raven Republic I564
 Sitz Emma E 2738

#Connealy Final Product
SITZ Pride 200B
 #Sitz Pride 308Y

#Connealy Confidence Plus
 #E&B Lady 1023 Precision 936
 #Connealy Thunder
 Sitz Emma E 2253
 Connealy Product 568
 #Ebonista of Conanga 471
 #Sitz Upward 307R
 #Sitz Pride 44P



| | |
|------------------|-------|
| BW | 67 |
| BWR | 100 |
| WW | 680 |
| ADJ 205 | 717 |
| WWR | 100 |
| Dam's Production | 5/105 |

| CED | BW | WW | YW | Milk | SC | Marb | REA | Fat | HP | Claw | Angle | SM | SC |
|-----|------|-----|-----|------|------|------|------|-------|------|------|-------|----|-----|
| 6 | -0.4 | 80 | 131 | 17 | 0.81 | 0.51 | 0.61 | 0.037 | 14.4 | 0.25 | 0.36 | 90 | 250 |
| 35% | 18% | 29% | 60% | 92% | 57% | 69% | 54% | 70% | 16% | 1% | 5% | 3% | 60% |

| CED | BW | WW | YW | Milk | SC | Marb | REA | Fat | HP | Claw | Angle | SM | SC |
|-----|-----|-----|-----|------|------|------|------|-------|------|------|-------|-----|-----|
| 6 | 1.6 | 79 | 137 | 18 | 0.53 | 0.53 | 0.54 | 0.037 | 12.6 | 0.38 | 0.42 | 58 | 242 |
| 40% | 61% | 12% | 28% | 88% | 73% | 60% | 52% | 70% | 68% | 8% | 29% | 65% | 65% |

Selling Choice of Lots 8, 9 and 10.

Selling Choice of Lots 8, 9 and 10.



SAC Pride 3202 • Lot 10





SAC Pride 3201

SAC PRIDE 3201

BD: 1/10/2023 Reg #: 20693095 Tattoo: 3201
 S A V Quarterback 7933 #S A V Regard 4863
S A V Panther 1906 S A V Blackcap May 3525
 S A V Blackcap May 6644 #Coleman Charlo 0256
 S A V Blackcap May 4136
 #Connealy Final Product Connealy Product 568
SITZ Pride 200B #Ebonista of Conanga 471
 #Sitz Pride 308Y #Sitz Upward 307R
 #Sitz Pride 44P

ANGUSGS
 Powered by Myogen GeneSeek

| | |
|------------------|-------|
| BW | 96 |
| BWR | 100 |
| WW | 735 |
| ADJ 205 | 731 |
| WWR | 100 |
| Dam's Production | 5/105 |

| CED | BW | WW | YW | Milk | SC | Marb | REA | Fat | HP | Claw | Angle | SM | SC |
|-----|-----|----|-----|------|------|------|------|-------|-----|------|-------|-----|-----|
| 0 | 5.2 | 93 | 162 | 34 | 1.13 | 0.25 | 0.81 | 0.027 | 9.9 | 0.37 | 0.5 | 45 | 219 |
| 93% | 99% | 2% | 4% | 7% | 51% | 85% | 29% | 64% | 86% | 10% | 74% | 90% | 85% |

Phenotypically beautiful bred heifer with excellent docility and leg structure. A full flush sister to the \$23k (half interest) Lot 1 virgin heifer sold on the 2023 Belles of the Grade sale. This is one of those opportunities of a lifetime to acquire a 200B daughter!

Sitz Pride 200B, the \$112,500 cow sold at the Sitz 2021 Female Sale, and mother of Sitz Stellar 726D. Stellar is the sire of several \$50,000 plus bulls sold by Sitz Angus over the past four years, including Sitz Resilient 1028 and Sitz Profound 680G.

Panther was the top selling bull in the 2022 Schaff Angus Valley Production sale, selling to Voss Angus. He was definitely a crowd favorite when it came to phenotype. He is very wide based with excellent structure and feet. His dam was the #1 yearling weight female of her calf crop and a flush sister to the world-record-selling flush of bulls that produced Rainfall, Raindance and President. Her progeny has been highlights at many of the SAV sales. Panther offers moderate birth weight with top of the breed performance. He is balanced across his EPD profile with no real holes.

Pasture exposed to Koupals B&B Logo Maker 25, ultrasound safe due March 19, 2025.



SAV Panther 1906 - Sire of Lot 11



Baldridge Isabel B061
Dam of Lot 12,13

SAC Isabel 4060 • Lot 12

12 SAC ISABEL 4060

| | | | | |
|-----------------------------|----------------------------|----------------------------|-------------------------|--------------|
| BD:1/2/2024 | Reg #: 20969018 | Tattoo: 4060 | BW | 88 |
| Sitz Accomplishment 720F | #Poss Achievement | Sitz Barbaramere Nell 166D | BWR | 100 |
| Sitz Virtue 11710 | #SITZ Logo 12964 | #Sitz Manor 1061 | WW | 770 |
| Sitz Manor 3708 | #C R A Bextor 872 5205 608 | G A R Objective 1885 | ADJ 205 | 739 |
| #G A R Prophet | #Styles Upgrade J59 | Baldrige Isabel T935 | WWR | 100 |
| Baldrige Isabel B061 | | | Dam's Production | 3/108 |
| Baldrige Isabel Y69 | | | | |



13 SAC ISABEL 4062

| | | | | |
|-----------------------------|----------------------------|----------------------------|-------------------------|--------------|
| BD:1/15/2024 | Reg #: 20969021 | Tattoo: 4062 | BW | 89 |
| Sitz Accomplishment 720F | #Poss Achievement | Sitz Barbaramere Nell 166D | BWR | 100 |
| Sitz Virtue 11710 | #SITZ Logo 12964 | #Sitz Manor 1061 | WW | 677 |
| Sitz Manor 3708 | #C R A Bextor 872 5205 608 | G A R Objective 1885 | ADJ 205 | 677 |
| #G A R Prophet | #Styles Upgrade J59 | Baldrige Isabel T935 | WWR | 100 |
| Baldrige Isabel B061 | | | Dam's Production | 3/108 |
| Baldrige Isabel Y69 | | | | |



| CED | BW | WW | YW | Milk | SC | Marb | REA | Fat | HP | Claw | Angle | SM | SC |
|-----|-----|-----|-----|------|------|------|------|--------|------|------|-------|-----|-----|
| 1 | 1.2 | 90 | 161 | 29 | 1.33 | 0.5 | 1.13 | -0.012 | 15.3 | 0.6 | 0.34 | 70 | 237 |
| 84% | 43% | 19% | 12% | 42% | 15% | 64% | 10% | 7% | 15% | 82% | 4% | 35% | 70% |

| CED | BW | WW | YW | Milk | SC | Marb | REA | Fat | HP | Claw | Angle | SM | SC |
|-----|-----|----|-----|------|------|------|------|-------|------|------|-------|-----|-----|
| 9 | 1.8 | 94 | 163 | 31 | 1.66 | 0.4 | 1.28 | 0.012 | 12.9 | 0.58 | 0.39 | 71 | 269 |
| 39% | 75% | 9% | 5% | 30% | 3% | 79% | 4% | 39% | 63% | 72% | 16% | 30% | 40% |

A true red carpet double feature and maternal trendsetters! These flush sisters are visually complete and numerically balanced with destiny to become foundation females or future donors stemming back to the famous Baldrige Isabel Y69.

Their dam, Baldrige Isabel B061, is one of the top Baldrige Isabel Y69 daughters. She is full sister to Baldrige Beast Mode and has produced astonishing sons and daughters. She is dam to the \$110,000.00 Baldrige Pappy (Alta Genetics). She is also the Dam of the \$55,000.00 Baldrige Chairman owned by Hoover Angus.

She also recently sold a \$56,000.00 heifer out of Stonewall Ridges sale in Tennessee.



Sitz Virtue 11710
Sire of Lots 12, 13, 14

SAC Isabel 4062 • Lot 13





Baldrige Pratissa J932 - Dam of Lot 14



Left: AJ on Buck bringing in the bull pairs.

14 SAC PRATISSA 3933

BD: 5/27/2023 Reg #: 20968771 Tattoo: 3933

Sitz Accomplishment 720F
Sitz Virtue 11710
 Sitz Manor 3708

Baldrige Pappy
Baldrige Pratissa J932
 Baldrige Pratissa E327

#Poss Achievement
 Sitz Barbaramere Nell 166D
 #SITZ Logo 12964
 #Sitz Manor 1061
 Hoover No Doubt
 Baldrige Isabel B061
 #S A V Resource 1441
 Baldrige Pratissa W165

ANGUSGS
 Powered by Myogen GenoSseek

| | |
|------------------|-------|
| BW | 74 |
| BWR | 100 |
| WW | 650 |
| ADJ 205 | 704 |
| WWR | 100 |
| Dam's Production | 2/100 |

| CED | BW | WW | YW | Milk | SC | Marb | REA | Fat | HP | Claw | Angle | SM | SC |
|-----|-----|-----|-----|------|------|------|------|------|------|------|-------|-----|-----|
| 6 | 1.9 | 80 | 143 | 35 | 0.73 | 0.42 | 0.93 | 0.07 | 14.7 | 0.5 | 0.42 | 81 | 254 |
| 59% | 67% | 30% | 29% | 8% | 30% | 78% | 15% | 78% | 29% | 61% | 39% | 15% | 55% |

An attractive Virtue daughter with angularity, thickness, and award-winning style. She has 11 EPD in the top 25% of her calf group including top 10% in CEM, Milk, Pap, and \$M! Her May 2023 birth date gives her an additional edge of maturity and readiness to breed this fall.

Her 3-year-old Certified Beef Pappy donor dam, Baldrige Pratissa J932, was a proud purchase by SAC from the 2022 Baldrige Female sale. She has raised two beautiful heifer calves including her 2024 born Craftsman heifer who weaned over 600 lbs.

Her second dam, E327 is a direct daughter of Baldrige Pratissa W165 and posted an individual WWR 102 and YWR 104 with top 1% of the breed weaning and yearling weight EPDs and top 3% PAP. Her sons were well received in the 2022 bull sale at Baldrige Performance Angus where they totaled \$40,000.



Sitz Ellunas Elite 139Z - Dam to 15



Sitz Stellar 726D - Sire of Lot Lots 15,25,26,30,35,37,44

15 SAC ELLUNAS ELITE 4392

ANGUSGS
Powered by *MyGen* GenesSeek

BD:1/13/2024 Reg #: 20969010 Tattoo: 4392
 #Mohnen Substantial 272 #Benfield Substance 8506
 #Sitz Stellar 726D Mohnen Glyn Mawr Elba 1758
 SITZ Pride 200B #Connealy Final Product
 #Sitz Pride 308Y
 #Sitz Upward 307R #Connealy Onward
Sitz Ellunas Elite 139Z Sitz Henrietta Pride 81M
 Sitz Ellunas Elite 81U #Rito 112 of 2536 Rito 616
 Sitz Ellunas Elite 146P

| | |
|------------------|-------|
| BW | 93 |
| BWR | 100 |
| WW | 700 |
| ADJ 205 | 696 |
| WWR | 100 |
| Dam's Production | 8/100 |

| CED | BW | WW | YW | Milk | SC | Marb | REA | Fat | HP | Claw | Angle | SM | SC |
|-----|-----|-----|-----|------|------|------|------|-------|------|------|-------|-----|-----|
| 9 | 1.3 | 71 | 126 | 32 | 0.66 | 0.6 | 0.44 | 0.027 | 12.1 | 0.41 | 0.43 | 73 | 255 |
| 11% | 23% | 59% | 43% | 29% | 73% | 53% | 71% | 53% | 69% | 17% | 33% | 25% | 55% |

A Stellar heifer with a gorgeous hair coat, straight top and a full sister to \$50K Sitz Robust 717H. The eight Robust sons were received well on our SAC 2024 Production sale averaging \$7.5k including the sale favorite \$25K SAC Fort Robinson 3711 sold to Ressler Ranch, Copperstown, ND. Expect her calves to add performance, pounds on the scale, moderate frame, and major longevity!

Her Upward dam, Sitz Ellunas Elite 139Z, is powerful, deep ribbed, broody, with perfect foot and leg structure -- owned with Raven Angus. BR 8/101, WR 7/100, YWR 7/98 Six flush brothers to 4392 will sell on the SAC Production Sale this upcoming February.





16 SAV EMBLYNETTE 6639

BD: 1/11/2016 Reg #: 18542203 Tattoo: 6639

Rito 707 of Ideal 3407 7075 #R R Rito 707
 #S A V Renown 3439 Ideal 3407 of 1418 076
 S A V Blackcap May 4136 #S A V 8180 Traveler 004
 #S A V May 2397
 #S A F 598 Bando 5175 #Bon View Bando 598
 S A V Emblynette 3301 S A F Royal Lass 1002
 #S A V Emblynette 7319 S A V Ext Emulation 5040
 Sav Emblynette Diamond 5369



| | |
|-----------------|-------|
| BW | 72 |
| BWR | 100 |
| WW | 810 |
| ADJ 205 | 743 |
| WWR | 100 |
| Ind. Production | 4/110 |

| CED | BW | WW | YW | Milk | SC | Marb | REA | Fat | HP | Claw | Angle | SM | SC |
|-----|-----|-----|-----|------|------|-------|------|-------|------|------|-------|-----|-----|
| 5 | 0.3 | 61 | 107 | 29 | 0.01 | -0.24 | 0.74 | 0.026 | 11.6 | 0.48 | 0.55 | 53 | 163 |
| 60% | 21% | 27% | 45% | 34% | 86% | 100% | 37% | 74% | 43% | 61% | 96% | 70% | 95% |

Selling 50% Flushing Rights

Our donor 6639 is an elegant, broody, beauty queen and loved by all who come to tour at Scott Angus Cattle. A SAV Renown daughter to none other than SAV Emblynette 3301, the model cow the Angus breed, unmatched for broodiness and maternal function. 6639 has become a bigtime producer for SAC having 43 calves raised at the ranch. She has been the proud dam of SAC Production Sales heavy hitters: \$10k SAC Nebraska 2018, \$10k SAC Journey 3721, and \$25k SAC Fort Robinson 3711 - her progeny has consistently had big stout frames and leading pasture presence. Her maternal sisters sired by SAV Resource 1441, brought \$150k, \$40k, and \$25k in the 2016 SAV Sale. BR 4/101, WR 4/111.

Pasture Exposed to SITZ Resilient 536J, ultrasound safe due March 9, 2025.



SAV Emblynette 3301 - Dam of Lot 16



SAV Renown 7948 - Sire of Lot 16



SAC Emblynette 4631

SAC EMBLYNETTE 4631

BD:12/31/2023 Reg #: 20968122 Tattoo: 4631

Sitz Resilient 10208 #Sitz Stellar 726D
Connealy Craftsman Sitz Miss Burgess 1856
 #Black Cathy of Conanga 8521 Connealy Niobrara 5451
 Black Carla of Conanga 450
 #S A V Renown 3439 Rito 707 of Ideal 3407 7075
S A V Emblynette 6639 S A V Blackcap May 4136
 S A V Emblynette 3301 #S A F 598 Bando 5175
 #S A V Emblynette 7319

ANGUSGS
 Powered by Vanogen GeneSeek

| | |
|------------------|-------|
| BW | 84 |
| BWR | 100 |
| WW | 652 |
| ADJ 205 | 623 |
| WWR | 100 |
| Dam's Production | 4/110 |

| CED | BW | WW | YW | Milk | SC | Marb | REA | Fat | HP | Claw | Angle | SM | SC |
|-----|-----|----|-----|------|-------|------|------|-------|------|------|-------|----|-----|
| 3 | 2.6 | 82 | 137 | 28 | -0.11 | 0.03 | 1.14 | 0.049 | 18.1 | 0.39 | 0.4 | 98 | 246 |
| 43% | 48% | 7% | 41% | 35% | 95% | 97% | 6% | 81% | 2% | 20% | 33% | 1% | 60% |

This Craftsman heifer is the complete package and what we strive for at Scott Angus Cattle! She's phenotypically perfect from head to foot and inherited her dam's maternal qualities -- properly displayed in her EPDs with excellent WW, YW, Heifer Pregnancy, Milk, foot scores, Ribeye, and top 1% in \$M.

Her captivating SAV Renown, dam 6639 has the ultimate elegance and broodiness. BR 4/101, WR 4/111. Her 2021 born SAV Governor heifer is destined to be a future donor. Her sons have led the last two SAC Production Sales and averaged over \$10,000.

Maternal granddam, SAV Emblynette 3301, the maternal icon in the Angus breed has generated \$2 million in direct progeny sales. Her herd sire sons include Momentum, Hesston, First Prize, Impact, Intent, Mainstream, Inspire, Remington, and Drover.





Jindra Acclaim - Sire of Lot 18



SAC Emblynette 7305 and SAC Emblynette 9305 together.

18 SAC EMBLYNETTE 9305

BD:2/5/2019 Reg #: 19781655 Tattoo: 9305
 Jindra 3rd Dimension #Jindra Double Vision
 #Jindra Acclaim Jindras Sapphire J 417
 Jindra Blackbird Lassy 1111 #Connealy Impression
 #S A V Renown 3439 Jindras Enchantress J 102
 #S A C Emblynette 7305 Rito 707 of Ideal 3407 7075
 S A V Emblynette 3301 S A V Blackcap May 4136
 S A F 598 Bando 5175
 #S A V Emblynette 7319

| | |
|-----------------|-------|
| BW | 70 |
| BWR | 103 |
| WW | 624 |
| ADJ 205 | 717 |
| WWR | 117 |
| Ind. Production | 4/101 |

| CEB | BW | WW | YW | Milk | SC | Marb | REA | Fat | HP | Claw | Angle | SM | SC |
|-----|-----|----|-----|------|-------|------|------|-------|----|------|-------|-----|-----|
| 3 | 1.9 | 74 | 133 | 27 | -0.32 | 0.46 | 0.78 | 0.006 | 11 | 0.37 | 0.35 | 51 | 273 |
| % | % | % | % | % | % | % | % | % | % | % | % | 75% | 20% |

Selling Half Interest, No Possession

Long, deep, perfect footed, absolutely full of maternal power and a flushing Jessie donor. BR 3/98, WR 3/101 She has raised three banger bulls including 2022 born Scale House bull, SAC Scale Bender 2847, soft made, excellent spring of rib, wide chest floor and proudly owned by Tatem Fowlkes in Newman Grove, NE. Her 2024 Logo Heifer is a definite stand out in the heifer pen - make sure to check her out during your SAC cattle tour!

Her pathfinder Renown dam, SAC Emblynette 7305, has a proven track record as well. BR 5/104, WR 5/106 Her 2023 Virtue bull calf, \$10K SAC Integrity 3705 purchased by Pilakowski Angus, was a ranch favorite of all the virtue bulls and used to A.I. several elite SAC registered cows this year including a flush to our donor Sitz Pride 200B.

Pasture exposed to SITZ AJS Stellar 706J, ultrasound safe due March 24, 2025.



19 S A C EMBLYNETTE 7310

BD:1/15/2017 Reg #: 19061854 Tattoo: 7310
 #S A V Registry 2831 Rito 707 of Ideal 3407 7075
#S A V Seedstock 4838 S A V Madame Pride 0075
 S A V Blackcap May 4136 #S A V 8180 Traveler 004
 #S A V May 2397
 #S A F 598 Bando 5175 #Bon View Bando 598
S A V Emblynette 3301 S A F Royal Lass 1002
 #S A V Emblynette 7319 S A V Ext Emulation 5040
 Sav Emblynette Diamond 5369

| | |
|-----------------|-------|
| BW | 70 |
| BWR | 100 |
| WW | 648 |
| ADJ 205 | 646 |
| WWR | 100 |
| Ind. Production | 5/104 |

| CED | BW | WW | YW | Milk | SC | Marb | REA | Fat | HP | Claw | Angle | SM | SC |
|-----|-----|----|-----|------|------|------|------|-------|-----|------|-------|-----|-----|
| 3 | 2.4 | 64 | 103 | 26 | 0.63 | 0.14 | 0.64 | 0.017 | 9.2 | 0.43 | 0.39 | 59 | 213 |
| % | % | % | % | % | % | % | % | % | % | % | % | 55% | 75% |

The power this pathfinder cow possesses is unreal. BR 5/102, WR 5/104 The Seedstock progeny are known to be rugged, great footed, and have that true "cowboy" look to them - and 7310 is no exception! It doesn't matter if she has a heifer or bull or who she's AI'd to, all her calves have shown major performance.

A ranch favorite is her 2022 born Profound heifer, SAC Emblynette 2310, half ownership purchased by Swim Cattle Company in 2023. 2310 has striking beauty, slick black coat, feminine calving ease head, plenty of length and depth and angularity.

Her well known dam, SAV Emblynette 3301, the maternal icon in the Angus breed has generated \$2 million in direct progeny sales. Her herd sire sons include Momentum, Hesston, First Prize, Impact, Intent, Mainstream, Inspire, Remington, and Drover.

SAV Seedstock 4838 - Sire of Lot 19

SAV Seedstock 4838 was the \$235,000 bull sold at the 2015 SAV sale. His phenomenal dam, SAV Blackcap May 4136, is a major impact, multi-trait leading cow with an unprecedented production record. She generated over \$10 million in progeny receipts and is the most prolific and influential cow in the history of the SAV herd.

Pasture exposed to SITZ AJS Stellar 706J, ultrasound safe due March 13, 2025.





Sitz Robust 717H - Sire of Lot 20,28, Brother of 15



20 SAC EMBLYNETTE 3636

BD:2/3/2023 Reg #: 20715505 Tattoo: 3636
 #Sitz Stellar 726D #Mohnen Substantial 272
SITZ Robust 717H SITZ Pride 200B
 Sitz Ellunas Elite 139Z #Sitz Upward 307R
 Sitz Ellunas Elite 81U
 #S A V Renown 3439 Rito 707 of Ideal 3407 7075
S A V Emblynette 6639 S A V Blackcap May 4136
 S A V Emblynette 3301 #S A F 598 Bando 5175
 #S A V Emblynette 7319

| | |
|------------------|-------|
| BW | 67 |
| BWR | 100 |
| WW | 520 |
| ADJ 205 | 622 |
| WWR | 100 |
| Dam's Production | 4/110 |

| CED | BW | WW | YW | Milk | SC | Marb | REA | Fat | HP | Claw | Angle | SM | SC |
|-----|-----|----|-----|------|------|------|------|-------|------|------|-------|-----|-----|
| 6 | 0.7 | 63 | 114 | 24 | 0.53 | 0.01 | 0.64 | 0.026 | 12.9 | 0.42 | 0.49 | 53 | 181 |
| % | % | % | % | % | % | % | % | % | % | % | % | 80% | 95% |

A brood cow candidate with moderate build, soundness, and functional design. A flush sister to the \$25k Lot 20 SAC Fort Robinson 3711 bull on this spring's SAC Production Sale sold to Ressler Ranch.

We love her Renown donor dam by SAV Emblynette 3301, SAV Emblynette 6639, for her elegance, greatly successful flusher, and proven heifer and bull producer. In the last two production sales, 6639's progeny has been Lot 1 and for good reason.

Pasture exposed to Koupals B&B Logo Maker 25, ultrasound safe with bull calf due March 29, 2025.

Left: Abby, Sam, A.J., Ryn, Robb and Macy



S A C Emblynette 7303 - GrandDam of Lot 21



Daisy and Lily Helping Daddy with Chores

21 SAC EMBLYNETTE 3313

BD: 3/15/2023 Reg #: 21024704 Tattoo: 3313

Sitz Resilient 10208 #Sitz Stellar 726D
SITZ Resilient 536J Sitz Miss Burgess 1856
 Sitz Barbaramere Nell 166D #S A V Resource 1441
 Sitz Barbaramere Nell 14Y
 S A V Cutting Edge 4857
 S A V Ajax 8885 #S A V Emblynette 2369
SAC Emblynette 1303 #S A V Renown 3439
 S A C Emblynette 7303 S A V Emblynette 3301

| | |
|------------------|------|
| BW | 63 |
| BWR | 96 |
| WW | 395 |
| ADJ 205 | 578 |
| WWR | 88 |
| Dam's Production | 1/88 |

| CED | BW | WW | YW | Milk | SC | Marb | REA | Fat | HP | Claw | Angle | SM | SC |
|-----|-----|----|-----|------|----|------|-----|-----|----|------|-------|-----|----|
| 3 | 1.9 | 58 | 108 | 24 | | | | | | | | 83 | |
| % | % | % | % | % | % | % | % | % | % | % | % | 10% | |

An elegant, ultra-feminine heifer from a Resilient son, maternally-charged from the world renown Emblynette cow family. She's the first progeny from her Ajax 2021 born dam and shows great maternal potential being in the top 10% in \$M. 3313 is a great chance to get your hands on a 3301 progeny cow at the beginning of her legacy!

Her maternal granddam, 7303, is absolutely one of our favorite SAV Renown daughters by legendary donor SAV Emblynette 3301. She has a perfect phenotype, disposition, frame score, udder, and feet. She's the kind to build a herd around. Also, 7303 is a full sister to the popular SAC Donor, SAV Emblynette 6639.

Pasture exposed to Koupals B&B Logo Maker 25 and SAC Jacob 3023, ultrasound safe due April 3, 2025.



SAV Emblynette 3240 - Dam of Lot 22



SAV Rainfall 6846 - Sire of Lot 22, 59

22 SAC EMBLYNETTE 2244

BD: 2/4/2022 Reg #: 20415537 Tattoo: 2244
 #Coleman Charlo 0256 #O C C Paxton 730P
S A V Rainfall 6846 Bohi Abigale 6014
 S A V Blackcap May 4136 #S A V 8180 Traveler 004
 #S A V May 2397
 #Bon View Bando 598
 #S A F 598 Bando 5175 S A F Royal Lass 1002
#S A V Emblynette 3240 #Bon View Balance 834
 #S A V Miss Emblynette 7369 B&B Miss Big Sky 2013



| | |
|------------------|-------|
| BW | 86 |
| BWR | 100 |
| WW | 630 |
| ADJ 205 | 696 |
| WWR | 100 |
| Dam's Production | 9/107 |

| CED | BW | WW | YW | Milk | SC | Marb | REA | Fat | HP | Claw | Angle | SM | SC |
|-----|-----|-----|-----|------|------|------|------|-------|------|------|-------|-----|-----|
| 7 | 1.6 | 52 | 98 | 35 | 0.71 | 0.39 | 0.51 | 0.007 | 11.4 | 0.38 | 0.44 | 62 | 231 |
| 41% | 44% | 71% | 46% | 12% | 55% | 87% | 57% | 35% | 37% | 15% | 42% | 45% | 55% |

An elegant, futuristic producer from the iconic, SAV Emblynette 3240. She stands on a perfect foot and weaned off a typey Armstrong bull calf who will sell this spring on the SAC production sale.

Her prolific pathfinder dam, SAV Emblynette 3240, (WR 9/107, YW 7/106) has proved time, and time again her dominance in the Angus breed over the span of her 18 year production including Renown son Blackline Plainsman 9341 – a exceptional power bull who has been leading the semen sales for Sire Buyer. Her Cut Above son, Top Notch; her President son, Popular Vote; and her Ajax son, Warrior have all been retained as herd sires at SAC. 8 daughters out of 3240 are also retained in our herd.

Pasture exposed to SAC Rainfall 1747, ultrasound safe due February 22, 2025.



SAC Emblynette 9608 • Dam of Lot 23



SAV Scale House 0845 • Sire of Lot 23,43

23 SAC EMBLYNETTE 2608

BD:1/15/2022 Reg #: 20415464 Tattoo: 2608

Marcys Scale Crusher
S A V Scale House 0845
 S A V Blackcap May 1416

#S A V President 6847
S A C Emblynette 9608
 S A V Emblynette 3608

#Sitz Upward 307R
 #Marcys Erica 393
 Rito 707 of Ideal 3407 7075
 S A V Blackcap May 4136
 #Coleman Charlo 0256
 S A V Blackcap May 4136
 S A V First Class 0207
 #Sav Emblynette Diamond

ANGUSGS
 Powered by VanGen GeneSeek

| | |
|------------------|-------|
| BW | 70 |
| BWR | 100 |
| WW | 666 |
| ADJ 205 | 713 |
| WWR | 103 |
| Dam's Production | 3/103 |

| 6377 | CED | BW | WW | YW | Milk | SC | Marb | REA | Fat | HP | Claw | Angle | SM | SC |
|------|-----|-----|----|-----|------|------|------|------|--------|------|------|-------|-----|-----|
| | 4 | 1.7 | 78 | 135 | 31 | 1.17 | 0.37 | 0.89 | -0.043 | 15.2 | 0.5 | 0.45 | 72 | 268 |
| | 90% | 81% | 6% | 13% | 30% | 16% | 64% | 20% | 6% | 17% | 49% | 35% | 20% | 20% |

A 2-year-old bred cow with pleasing birth EPD and yet earned a 205-day weight of 703 lbs. As a first calf heifer she raised a studly Profound bull calf giving her a weaning ratio of 1/102. We love this girl's maternal look, solid EPD profile, and large milk quantity. Go ahead and give her back a scratch as she's super docile!

Her 5-year-old President dam, 9608, was Kelly's favorite pick of the virgin heifers of the 2019 year. She has produced two banger daughters retained in the SAC registered herd and earned a 103/3 weaning ratio. Her 2023 born bull calf, SAC Strong Hold 3738, sold on the production sale this year and is a sure-shot performance bull with balanced EPDs and solid phenotype.

Her pathfinder 3rd dam, 6377, recorded a weaning ratio of 106/7 calves. She has 49 progenies in past SAV sales, including the lot 1 bulls in 2006 and 2008 SAV sales and the lead-off female in the 2007 SAV Sale.

AI bred to LT Clarion 9054, ultrasound safe with a bull calf due January 26, 2025.





SAC Emblynette Diamond 7517 with Renovation bull calf - Dam of Lot 24



SAV Bloodline 9578 - Sire of Lot 24, 60

24 SAC EMBLYNETTE DIAMOND 2517 **ANGUSGS**
Powered by Neogen GenesSeek

BD: 1/6/2022 Reg #: 20415467 Tattoo: 2517

S A V Rainfall 6846 #Coleman Charlo 0256
S A V Bloodline 9578 S A V Blackcap May 4136
 #S A V Emblynette 2369 #S A V 707 Rito 9969
 S A V Emblynette 7566
 #S A V Registry 2831
 #S A V Sensation 5615 S A V Blackcap May 4136
SAC Emblynette Diamond 7517 #F V 20K King 308M
 SAV Emblynette Diamond 8517 #Sav Emblynette Diamond 6377

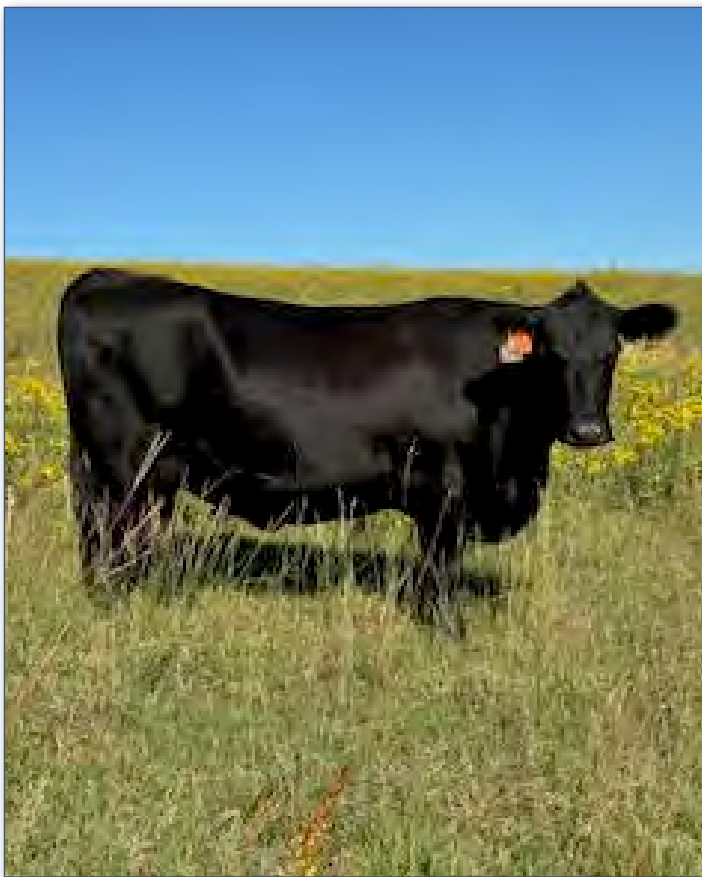
| | |
|------------------|-------|
| BW | 81 |
| BWR | 111 |
| WW | 760 |
| ADJ 205 | 753 |
| WWR | 108 |
| Dam's Production | 6/103 |

| CED | BW | WW | YW | Milk | SC | Marb | REA | Fat | HP | Claw | Angle | SM | SC |
|------|------|----|-----|------|------|------|------|--------|-----|------|-------|-----|-----|
| -14 | 6.5 | 75 | 131 | 24 | 0.63 | 0.44 | 0.39 | -0.039 | 9.1 | 0.51 | 0.46 | 5 | 180 |
| 100% | 100% | 2% | 8% | 37% | 39% | 60% | 54% | 14% | 70% | 65% | 62% | 95% | 95% |

A 2022 born bloodline daughter from the monumental Emblynette family that has been walking our ranch for 24 years. This bred cow is fool proof when it comes to making productive cows that maintain themselves under range conditions, while bringing in some of the heaviest calves.

Her 7-year-old Sensation dam, has stuck AI every year of her production career! Included in her female arsenal is this year's fabulous 2024 born Armstrong heifer weighing in at 840 lbs. when she received her booster shot. BR 6/107, WR 5/102 Third pathfinder dam, "Roanie", SAV Emblynette Diamond 6377 (dam of pathfinder donor 1181, also the dam of 7749 who sold to Herbster Angus for \$350,000, and the grand dam of Harvester who sold for \$275,000, son of 7749) - was a cornerstone donor of the Scott Angus Cattle program. You can expect big volume, good footed, heavy milking, high fertility and longevity from her prestigious family.

Pasture exposed to SAC Rainfall 1747, ultrasound safe with heifer calf due March 25, 2025.



SAC Emblynette 0845 - Dam of Lot 25

25 SAC EMBLYNETTE 3845

ANGUSGS
Powered by Neogen GenesSeek

BD: 1/12/2023 Reg #: 20695211 Tattoo: 3845
 #Mohnen Substantial 272 #Benfield Substance 8506
 #Sitz Stellar 726D Mohnen Glyn Mawr Elba 1758
 SITZ Pride 200B #Connealy Final Product
 #Sitz Pride 308Y
 #Sinclair Emulation XXP
 S A V Elation 7899 S A V Blackcap May 1782
S A C Emblynette 0845 #S A V Sensation 5615
 S A C Emblynette 8245 #S A V Emblynette 3240

| | |
|------------------|-------|
| BW | 71 |
| BWR | 101 |
| WW | 645 |
| ADJ 205 | 677 |
| WWR | 103 |
| Dam's Production | 3/107 |

| CED | BW | WW | YW | Milk | SC | Marb | REA | Fat | HP | Claw | Angle | SM | SC |
|-----|-----|----|-----|------|------|------|------|-------|-----|------|-------|-----|-----|
| 1 | 2.1 | 80 | 144 | 19 | 0.72 | 0.39 | 0.51 | 0.034 | 8.8 | 0.43 | 0.49 | 22 | 189 |
| 87% | 82% | 7% | 1% | 91% | 88% | 100% | 47% | 23% | 94% | 31% | 77% | 95% | 95% |

A bred heifer with great potential from a stacked pedigree. Sitz Pride 200B highlighting the paternal and SAV Emblynette 3240 showing up in the maternal - the possibilities are endless with this girl.

Her 2020 Elation dam is putting up quite the calving stats. As a first calf heifer, her Doc Ryan son brought \$9,300 on the 2022 SAC Production sale. This year, her stunning Badlands heifer had the 2nd highest weaning weight of her 2024 calf crop at 760 lbs.

Pasture exposed to Koupals B&B Logo Maker 24, ultrasound safe with bull calf due March 25, 2025.





SAV Emblynette 7749 - 3rd Dam of Lot 26



Simon checking cows

26 SAC EMBLYNETTE 3781

BD: 1/13/2023 Reg #: 21036670 Tattoo: 3781
 #Mohnen Substantial 272 #Benfield Substance 8506
#Sitz Stellar 726D Mohnen Glyn Mawr Elba 1758
 SITZ Pride 200B #Connealy Final Product
 #Sitz Pride 308Y
 #S A V President 6847
 S A V Primrose 2035
SAC Emblynette 1781 #S A V Iron Mountain 8066
 S A V Emblynette 3781 S A V Emblynette 7749

| | |
|------------------|------|
| BW | 66 |
| BWR | 101 |
| WW | 565 |
| ADJ 205 | 624 |
| WWR | 95 |
| Dam's Production | 1/95 |

| CED | BW | WW | YW | Milk | SC | Marb | REA | Fat | HP | Claw | Angle | SM | SC |
|-----|-----|----|-----|------|----|------|-----|-----|----|------|-------|-----|----|
| -3 | 3.5 | 76 | 136 | 19 | | | | | | | | 39 | |
| % | % | % | % | % | % | % | % | % | % | % | % | 95% | |

An easy fleshing Stellar bred heifer who will thrive on grass and fit for any environment. Her Emblynette cow family boasts longevity and fertility and stems back to pathfinder SAV Emblynette Diamond 6377 who we called "Roanie" a cornerstone donor of the Scott Angus Cattle program.

Her maternal granddam, SAV Emblynette 3781, BR 4/107, WR 4/107 was in production at SAC for seven years and raised seven structurally sound calves.

A.I. bred to S Armstrong 4/11/24, ultrasound safe with heifer calf due January 18, 2025.

Fun Fact: 3781's famous 3rd dam, SAV Emblynette 7749, known for being the \$350,000 record-selling cow in SAV history to Herbster Angus Farms in the 2012 SAV Sale was raised at Scott Angus Cattle.



28 SAC BLACKCAP MAY 3574

ANGUS
GS
Powered by Neogen GenesSeek

BD: 5/1/2023 Reg #: 20970474 Tattoo: 3574

#Sitz Stellar 726D

SITZ Robust 717H

Sitz Ellunas Elite 139Z

#S A V Resource 1441

S A V Blackcap May 4574

#S A V Blackcap May 5530

#Mohnen Substantial 272

SITZ Pride 200B

#Sitz Upward 307R

Sitz Ellunas Elite 81U

Rito 707 of Ideal 3407 7075

S A V Blackcap May 4136

#B C C Bushwacker 41-93

S A V May 7238

| | |
|------------------|-------|
| BW | 63 |
| BWR | 100 |
| WW | 715 |
| ADJ 205 | 703 |
| WWR | 100 |
| Dam's Production | 8/103 |

| CED | BW | WW | YW | Milk | SC | Marb | REA | Fat | HP | Claw | Angle | SM | SC |
|-----|-----|-----|-----|------|------|------|------|-------|------|------|-------|-----|-----|
| 1 | 2.4 | 69 | 126 | 26 | 0.98 | 0.26 | 0.62 | 0.058 | 13.9 | 0.33 | 0.52 | 59 | 229 |
| 83% | 62% | 25% | 9% | 33% | 33% | 90% | 34% | 85% | 47% | 4% | 78% | 65% | 80% |

Selling Half Interest, No Possession

An extra fancy 2023 summer born Robust heifer has structural soundness, safe for high altitudes, functional design destined to be a donor and the only female of her mating at SAC. She came into this world at a moderate 63 lb. weight and weaned off at a heavy 715 lbs. giving her a WR of 100.

Her Resource dam, SAV Blackcap May 4574 is a flush sister to \$180,000 SAV Regard 4863, \$67,500 SAV Robust 4858, and the \$55,000 SAV Rematch 4860. This standout flush was raised right here at Scott Angus Cattle! 4574 has consistently provided bulls with thickness, muscle-shape, and superior stoutness – built solid and strong for the ranch world. A 2024 born Jameson son was a pasture favorite and will be sold on the SAC Production Sale this February.

DVAuction

Broadcasting Real-Time Auctions

Use your phone's camera app to scan the QR code below for videos.

Can't make the sale? Bid from home with DVAuction's "real-time" internet bidding service! Buying online is as easy.

1. Create an account at www.dvauction.com under the "register" tab.
2. Apply for bidding approval by clicking on the "details" tab at least 24 hours prior to the auction - a DV representative will notify you when you are approved.
3. Tune in for the sale and make your purchases!

After the sale, contact Scott Angus Cattle to arrange transportation and payment. High speed internet is required for successful bidding - be sure to check the lag-time monitor in the top left corner to ensure real-time broadcasts.

Proxy Bidding: If you can't make time to watch the sale, register a proxy bid and DVAuction will represent your bid while you're away. Look for the "proxy bid" tab on the auction listing and fill in your maximum bids. They'll handle the rest!

Having troubles? During the auction, you can type a message to the operator at any time for assistance. DVAuction support is available at (402) 474-5557.





29 SAC BLACKCAP MAY 4575

ANGUS
Powered by Neogen GenScan

BD: 2/10/2024 Reg #: 20968892 Tattoo: 4575

Ellingson Rangeland
Ellingson Open Range
EA Bells Girl 2181

#Basin Rainmaker 4404
EA Emblynette 7009
#Sitz Upward 307R
E A Bethany 941
Rito 707 of Ideal 3407 7075
S A V Blackcap May 4136
#B C C Bushwacker 41-93
S A V May 7238

#S A V Resource 1441
S A V Blackcap May 4574
#S A V Blackcap May 5530

| | |
|------------------|-------|
| BW | 91 |
| BWR | 100 |
| WW | 637 |
| ADJ 205 | 703 |
| WWR | 100 |
| Dam's Production | 8/103 |

| CED | BW | WW | YW | Milk | SC | Marb | REA | Fat | HP | Claw | Angle | SM | SC |
|-----|-----|-----|-----|------|------|------|------|-------|------|------|-------|-----|-----|
| 2 | 2.2 | 65 | 126 | 34 | 1.08 | 0.06 | 1.12 | 0.019 | 16.9 | 0.3 | 0.31 | 76 | 242 |
| 81% | 74% | 27% | 3% | 14% | 22% | 90% | 5% | 43% | 18% | 2% | 4% | 20% | 65% |

A fresh new mating exemplifies through this moderate made, deep ribbed Open Range heifer with one of the highest ribeye scores of the entire 2024 Belles of the Grade offering. All signs point to maternal and fertility with high heifer pregnancy, milk, and scrotal scores. We are excited to see the bulls that come out of her progeny!

Her legendary pathfinder maternal granddam dam, SAV Blackcap May 5530, reigns among the three top income-producing cows, in SAV history, with \$2 million in receipts on 113 progenies averaging \$18,029 including Priority, Brand Name, Robust, Regard and Cutting Edge.



Ellingson Open Range - Sire of Lot 29

Open Range was the \$47,500 fourth-top-selling bull of the 2022 Ellingson Angus production sale. His mother is the iconic EA Bells Girl 2181, whose legacy has dominated recent Ellingson Angus sales. Open Range currently has nine maternal and full sisters serving on the donor roster at Ellingson Angus including the Pathfinder dam, EA Bells Girl 7617 who is best known as the mother of the \$80,000 Ellingson Badlands 0285, \$85,000 Ellingson Brickhouse, \$110,000 Ellingson Preeminent and \$50,000 Ellingson Progressive. Phenotypically he is extremely clean in his lines, wide and strong-topped, travels with fluency and authority and stands down on tremendous heel depth, all of which are a testament to his structural integrity.





SAC Blackcap May 7316 - Dam of Lot 30,31

30 SAC BLACKCAP MAY 3317

ANGUSGS
Powered by Neogen GenoSlek

BD:1/13/2023 Reg #: 20705364 Tattoo: 3317
 #Mohnen Substantial 272 #Benfield Substance 8506
 #Sitz Stellar 726D Mohnen Glyn Mawr Elba 1758
 SITZ Pride 200B #Connealy Final Product
 #Sitz Pride 308Y
 #S A V Regard 4863 #S A V Resource 1441
S A C Blackcap May 7316 #S A V Blackcap May 5530
 #S A V Blackcap May 7306 #Boyd New Day 8005
 S A V Blackcap May 4136

| | |
|------------------|-------|
| BW | 79 |
| BWR | 100 |
| WW | 648 |
| ADJ 205 | 651 |
| WWR | 100 |
| Dam's Production | 3/110 |

| CED | BW | WW | YW | Milk | SC | Marb | REA | Fat | HP | Claw | Angle | SM | SC |
|-----|-----|----|-----|------|------|------|-----|-------|------|------|-------|-----|-----|
| 2 | 1.9 | 82 | 148 | 29 | 0.91 | 0.73 | 0.6 | 0.028 | 15.8 | 0.32 | 0.39 | 77 | 264 |
| 70% | 54% | 9% | 7% | 29% | 60% | 33% | 48% | 41% | 23% | 5% | 25% | 20% | 45% |

This maternal gem from the Blackcap May family will be a source of quality and profit for years to come - backed by her maternal granddam 7306 (WR 9/108), a 16-year-old pathfinder Boyd New Day direct daughter to the legendary dam SAV Blackcap May 4136. Her bullet-proof EPD profile proves her potential with reasonable birthweight, high WW, YW, great YH, HP, feet scores, docility, PAP and earning the Certified Beef Brand.

Her stunning Regard dam 7316 is a second-generation SAC Donor and is top 1% WW, YW, and Milk! Her pride and joy, Governor daughter, 0316, is the dam of the high selling Doc Ryan heifer 2316, on the 2022 Belles of the Grade Female Sale sold to Herbster Angus. The \$6K SAC Galavant 3730, a full flush brother was sold to Iron Pin Ranch in Comer, GA.

A.I. bred to M Diamond Ranahan 111 4/26/2024, ultrasound safe with bull calf due February 2, 2025.



Sitz Stellar 726D - Sire of Lot 30



Sitz Resilient 10208 - Sire of Lot 31



Simon Mutton Busting

31 SAC BLACKCAP MAY 3314



BD: 1/26/2023 Reg #: 20693794 Tattoo: 3314

#Sitz Stellar 726D #Mohnen Substantial 272
Sitz Resilient 10208 SITZ Pride 200B
 Sitz Miss Burgess 1856 #Sitz Top Game 561X
 Sitz Miss Burgess 4381
 #S A V Regard 4863 #S A V Resource 1441
S A C Blackcap May 7316 #S A V Blackcap May 5530
 #S A V Blackcap May 7306 #Boyd New Day 8005
 S A V Blackcap May 4136

| | |
|------------------|-------|
| BW | 89 |
| BWR | 100 |
| WW | 710 |
| ADJ 205 | 747 |
| WWR | 100 |
| Dam's Production | 3/110 |

| CED | BW | WW | YW | Milk | SC | Marb | REA | Fat | HP | Claw | Angle | SM | SC |
|-----|-----|-----|-----|------|------|------|------|-------|------|------|-------|----|-----|
| -2 | 2.8 | 100 | 171 | 42 | 1.12 | 0.51 | 0.56 | 0.007 | 16.7 | 0.4 | 0.39 | 94 | 260 |
| 74% | 39% | 5% | 12% | 3% | 41% | 60% | 44% | 13% | 26% | 13% | 11% | 2% | 50% |

An absolute standout of the 2023 calf crop since day one and dad's personal pick for favorite phenotype. The kind that is hard to produce and even harder to sell! Perfect headed, awesome neck extension, with a wedgy pattern and a matching standout EPD profile with 9 categories in the Top 15% in the nation!

Her Regard dam, 7316, WR 3/110 is the talk of the ranch right now with fantastic flushing results on her second year as a SAC donor. 3314's rock solid EPD profile is no surprise when you take a look at 7316's and notice that 15 EPD categories in the top 15% - including WW, YW, Milk, CW, and \$W in the top 1%!

Pasture exposed to SAC Jacob 3023 and Koupals B&B Logo Maker 25, ultrasound safe due April 9, 2025.



SAC Blackcap May 1808 - Dam of Lot 32



SAV Renovation 6822 - Sire to 32, 56

32 SAV BLACKCAP MAY 0590 **ANGUSGS**
Powered by Neogen GenesSeek

BD:12/19/2019 Reg #: 19810896 Tattoo: 0590
 #S A V Renown 3439 Rito 707 of Ideal 3407 7075
S A V Renovation 6822 S A V Blackcap May 4136
 S A V Madame Pride 0151 #S A V 004 Density 4336
 #S A V Net Worth 4200 #S A V Madame Pride 0075
#S A V Blackcap May 1808 #S A V 8180 Traveler 004
 #S A V May 2397 S A V May 2410
 #S A F 598 Bando 5175
 S A V May 7238

| | |
|-----------------|------|
| BW | 68 |
| BWR | 100 |
| WW | 882 |
| ADJ 205 | 753 |
| WWR | 100 |
| Ind. Production | 2/93 |

| CED | BW | WW | YW | Milk | SC | Marb | REA | Fat | HP | Claw | Angle | SM | SC |
|-----|-----|----|-----|------|------|------|-----|-------|-----|------|-------|-----|-----|
| 1 | 4.2 | 76 | 126 | 26 | 1.33 | 0.32 | 0 | 0.119 | 9.4 | 0.4 | 0.52 | 55 | 194 |
| 80% | 80% | 7% | 30% | 55% | 11% | 69% | 99% | 100% | 78% | 24% | 87% | 65% | 90% |

0590 is a dynamic 4-year-old SAV Renovation 6822 daughter with maternal and performance, backed by an extremely potent, productive, proven cow family. A direct daughter to 1808 making her a flush sister to the \$40,000 SAV John Wayne 0862 and to the \$35,000 SAV Roy Rogers 0863. She offers a fantastic disposition and pedigree to make a productive and profitable herd addition.

A.I. Bred to LT Clarion 9054
5/24/24, ultrasound safe due
March 2, 2025.



Pops, Ryn and Hardee fishing.



SAC Madame Pride 7805 • Dam of Lot 33



Sitz Profound 680G • Sire to 33

33 SAC MADAME PRIDE 2805

ANGUS
GS
Powered by Neogen GenesSeek

BD: 1/5/2022 Reg #: 20422483 Tattoo: 2805
 #Sitz Stellar 726D #Mohnen Substantial 272
SITZ Profound 680G SITZ Pride 200B
 #Sitz Epponia 223C Sitz Upward 9873
 Sitz Epponia 31Z
 #S A V Seedstock 4838 #S A V Registry 2831
S A C Madame Pride 7805 S A V Blackcap May 4136
 S A V Madame Pride 9803 #S A V Bismarck 5682
 S A V Madame Pride 5290

| | |
|------------------|------|
| BW | 65 |
| BWR | 89 |
| WW | 618 |
| ADJ 205 | 610 |
| WWR | 88 |
| Dam's Production | 5/91 |

| CED | BW | WW | YW | Milk | SC | Marb | REA | Fat | HP | Claw | Angle | SM | SC |
|-----|------|-----|-----|------|------|------|------|-------|----|------|-------|-----|-----|
| 8 | -1.2 | 58 | 110 | 21 | 1.47 | 0.88 | 0.62 | 0.033 | 19 | 0.43 | 0.47 | 83 | 279 |
| 64% | 33% | 67% | 37% | 68% | 19% | 16% | 47% | 53% | 2% | 24% | 60% | 10% | 30% |

A rare combination of calving-ease with natural thickness, capacity, muscle and moderation, in an easy-fleshing package. We are especially excited about this Profound bred heifer's unique EPD strengths: negative BW, heifer pregnancy (18.9), scrotal (1.47), .88 Marbling, and top 10% \$M. Certified Angus Beef Brand qualified!

Her Seedstock dam 7805 has proven the longevity of the Madame Pride cow family and become one of the favorites of the 9803 daughters raised at SAC. She sports an angular build, nice patterned profile, low maintenance udder and all stacked on a good foundation. She has given us four powerful bulls and 2805 is her first heifer. Her 2024 Craftsman heifer looks to be following in her sister's footsteps also receiving the Certified Angus Beef brand and sporting a stylish look.

Her exquisite Bismarck 2nd dam, SAV Madame Pride 9803, is a phenotypic powerhouse descending from the first Schaff cow to be enrolled in embryo transplant. She is a 7th consecutive generation SAV Madame Pride donor who averaged \$17K sales from just her first four progeny and a current profit center at Davenport Angus. **A.I. bred to M Diamond Ranahan 111, 3/27/24, ultrasound safe with bull calf due January 3, 2025.**





SAC Madame Pride 8009 - Dam of Lot 34



SAC Jacob 3023 - Pasture herdsire to Lots 21, 25, 31, 34, 37, 40 and 42

34 SAC MADAME PRIDE 3001



BD: 1/12/2023 Reg #: 20693792 Tattoo: 3001
 #Sitz Stellar 726D #Mohnen Substantial 272
Sitz Resilient 10208 SITZ Pride 200B
 Sitz Miss Burgess 1856 #Sitz Top Game 561X
 Sitz Miss Burgess 4381
 #R B Active Duty 010 #LCC New Standard
S A C Madame Pride 8009 B A Lady 6807 305
 S A V Madame Pride 9803 #S A V Bismarck 5682
 S A V Madame Pride 5290

| | |
|------------------|-------|
| BW | 54 |
| BWR | 85 |
| WW | 635 |
| ADJ 205 | 692 |
| WWR | 105 |
| Dam's Production | 2/100 |

| CED | BW | WW | YW | Milk | SC | Marb | REA | Fat | HP | Claw | Angle | SM | SC |
|-----|------|-----|-----|------|------|------|------|-------|------|------|-------|-----|-----|
| 9 | -0.4 | 68 | 120 | 32 | 0.61 | 0.56 | 0.43 | 0.037 | 21.1 | 0.52 | 0.52 | 85 | 245 |
| 15% | 9% | 31% | 52% | 17% | 56% | 56% | 66% | 69% | 1% | 57% | 69% | 10% | 65% |

This Resilient bred heifer is the first female progeny of her powerhouse bull-making dam, 8009. 3001 is beautifully angular, excellent disposition and safe for high altitudes (PAP top 3%). She scored in the top 1% heifer pregnancy EPD and 31 score in the MILK.

Her coal black broody, Active Duty dam, 8009 is a fertile tank with abundant milk. Her maternal granddam 9803, a 7th Consecutive generation SAV Madame Pride donor before becoming the anchor female of Davenport Angus embryo program. SAC has raised 11 top end 9803 females in our herd.

Pasture exposed to SAC Jacob 3023, ultrasound safe due April 14, 2025.



SAV Madame Pride 9803 - GrandDam of Lot 35



Koupals B&B Logo Maker 25 - Pasture herdsire to Lots 11, 20, 21, 35, 37 and 40.

35 SAC MADAME PRIDE 3011

ANGUS
GS
Powered by Neogen GenoSseek

BD:1/23/2023 Reg #: 20695176 Tattoo: 3011
 #Mohnen Substantial 272 #Benfield Substance 8506
#Sitz Stellar 726D Mohnen Glyn Mawr Elba 1758
 SITZ Pride 200B #Connealy Final Product
 #Sitz Pride 308Y
 #R B Active Duty 010 #LCC New Standard
S A C Madame Pride 8011 B A Lady 6807 305
 S A V Madame Pride 9803 #S A V Bismarck 5682
 S A V Madame Pride 5290

| | |
|------------------|-------|
| BW | 72 |
| BWR | 99 |
| WW | 665 |
| ADJ 205 | 692 |
| WWR | 105 |
| Dam's Production | 3/105 |

| CED | BW | WW | YW | Milk | SC | Marb | REA | Fat | HP | Claw | Angle | SM | SC |
|-----|-----|----|-----|------|------|------|------|-------|-----|------|-------|-----|-----|
| 7 | 1.1 | 86 | 149 | 21 | 1.55 | 0.11 | 0.51 | 0.061 | 8.7 | 0.35 | 0.47 | 47 | 201 |
| 47% | 39% | 4% | 11% | 66% | 6% | 85% | 46% | 90% | 69% | 10% | 52% | 90% | 95% |

A deep, broody, and feminine featured Madame Pride bred heifer will make a very nice starter cow for your Angus herd. She has one of the largest spreads between BW and YW in the whole sale offering.

Her 2018 born Active Duty Dam is a deep bodied, square uddered cow with a beautiful jet black coat.

Pasture exposed to Koupals B&B Logo Maker 25, ultrasound safe with heifer calf due March 30, 2025.



36 LINZ LADY 116-8213

BD: 1/1/2018

Reg #: 19150647

Tattoo: 8213

#S A V Registry 2831
#S A V Sensation 5615
 S A V Blackcap May 4136

Rito 707 of Ideal 3407 7075
 S A V Madame Pride 0075
 #S A V 8180 Traveler 004
 #S A V May 2397
 #S S Objective T510 0T26
 G A R 1407 New Design 1463
 #LCC New Standard
 B A Lady 6807 305

#G A R Objective 7125
R B Lady 890-116
 R B Lady Standard 305-890

ANGUSGS
Powered by Neogen GenoSeek

| | |
|-----------------|------|
| BW | 76 |
| BWR | 100 |
| WW | 748 |
| ADJ 205 | 736 |
| WWR | 100 |
| Ind. Production | 2/94 |

| CED | BW | WW | YW | Milk | SC | Marb | REA | Fat | HP | Claw | Angle | SM | SC |
|-----|-----|-----|-----|------|-------|------|------|--------|------|------|-------|-----|-----|
| -6 | 3.7 | 66 | 126 | 27 | -0.05 | 0.47 | 0.97 | -0.056 | 10.5 | 0.37 | 0.52 | 42 | 252 |
| 96% | 80% | 62% | 27% | 74% | 91% | 66% | 10% | 2% | 50% | 9% | 59% | 90% | 35% |

Half Interest, No Possession

This outstanding 6-year-old 116 Sensation donor has already proven her greatness and is just getting started! She boasted four fabulous sale lots in the 2024 SAC Production Sale and stamped each of them with solid built frame, big rump, and perfect feet including sale standout \$9K SAC Granite 3206 with a semen bull worthy EPD profile. In her four years of production, she has proven to be a maternal powerhouse with four natural bull calves, all of which were the pick of the pen for their strapping stature. In her two years as SAC donor, she has been on the leader board for consistently high flush numbers.

Her \$80K dam, RB Lady 890-116, is a breed leader in feed efficiency, impressive phenotype and performance. She recorded 7.8% IMF and a 13.9 inch RE at 1,000 lbs. while in pasture, exemplifying her carcass potential.



SAV Sensation 5615 • Sire of Lot 36

And we aren't doing 8213's footnote justice if we don't mention her maternal RB Lady lineage reaching back to her famous \$175k maternal granddam, RB Lady Standard 305-890, a Herbster Angus Donor producing over \$2.7 Million in progeny sales and full sister to RB Active Duty.

Pasture exposed to SITZ AJS Stellar 706J, ultrasound safe due February 16, 2025.



37 SAC LADY 3211

BD: 1/2/2023 Reg #: 20695225 Tattoo: 3211

#Mohnen Substantial 272 #Benfield Substance 8506
 #Sitz Stellar 726D Mohnen Glyn Mawr Elba 1758
 SITZ Pride 200B #Connealy Final Product
 #Sitz Pride 308Y
 #S A V Sensation 5615 #S A V Registry 2831
Linz Lady 116-8213 S A V Blackcap May 4136
 R B Lady 890-116 #G A R Objective 7125
 R B Lady Standard 305-890

ANGUS
Powered by NeoGen GenSeek

| | |
|------------------|------|
| BW | 78 |
| BWR | 100 |
| WW | 690 |
| ADJ 205 | 668 |
| WWR | 100 |
| Dam's Production | 2/94 |

| CED | BW | WW | YW | Milk | SC | Marb | REA | Fat | HP | Claw | Angle | SM | SC |
|-----|-----|-----|-----|------|------|------|------|-------|------|------|-------|-----|-----|
| 6 | 0.4 | 73 | 129 | 27 | 0.07 | 0.37 | 0.36 | 0.021 | 11.2 | 0.38 | 0.43 | 56 | 231 |
| 41% | 22% | 53% | 34% | 51% | 87% | 78% | 67% | 22% | 38% | 10% | 23% | 70% | 75% |

A fast way to fill your pasture with maternal quality! Her RB Lady lineage reaches back to the famous \$175k RB Lady Standard 305-890 – a full sister to RB Active Duty. 3211 is the FIRST 8213 female born and shows off a nice pattern, straight backline, square hip, and calving ease head.

Her outstanding 116 Sensation dam, 8213 personifies everything we look for in a great brood cow and donor. In her three years of production, she has proven to be a maternal powerhouse with four bull calves, all of which were the pick of the pen for the strapping stature. She has shown great flushing abilities these past two years and we look forward to many years of 8213 progeny!

Her \$80K Maternal Granddam RB Lady 890-116 is a breed leader in feed efficiency, impressive phenotype and performance. She recorded 7.8% IMF and a 13.9 inch RE at 1,000 lbs. while in pasture, exemplifying her carcass potential.

Pasture exposed to Koupals B&B Logo Maker 25 and SAC Jacob 3023, ultrasound safe with heifer calf due April 4, 2025.



Linz Lady 116-8213 • Dam of Lot 37





SAC Bessie Heiress 7102 • Dam of Lot 38



M Diamond Ranahan 111 • AI bred sire to Lots 30 and 38.

38 SAC BESSIE HEIRESS 2102

BD:1/11/2022 Reg #: 20415506 Tattoo: 2102

S A V Rainfall 6846 #Coleman Charlo 0256
S A V Bloodline 9578 S A V Blackcap May 4136
 #S A V Emblynette 2369 #S A V 707 Rito 9969
 S A V Emblynette 7566
 Rito 707 of Ideal 3407 7075
 #S A V Resource 1441 S A V Blackcap May 4136
#S A C Bessie Heiress 7102 #S A V 8180 Traveler 004
 #S A V Bessie Heiress 4149 S A V Bessie Heiress 1184

ANGUS
 GS
 Powered by Noogen GeneSook

| | |
|------------------|-------|
| BW | 85 |
| BWR | 116 |
| WW | 698 |
| ADJ 205 | 703 |
| WWR | 101 |
| Dam's Production | 5/103 |

| CED | BW | WW | YW | Milk | SC | Marb | REA | Fat | HP | Claw | Angle | SM | SC |
|-----|-----|----|-----|------|------|------|------|-------|------|------|-------|-----|-----|
| -10 | 5.5 | 77 | 133 | 35 | 0.92 | 0.47 | 0.69 | 0.017 | 14.6 | 0.33 | 0.38 | 48 | 228 |
| 95% | 85% | 9% | 19% | 8% | 32% | 65% | 36% | 60% | 18% | 8% | 31% | 90% | 80% |

A Bessie Heiress bred cow from the SAC replacement pen with brood cow written all over her. She's rocking a solid EPD profile including 8 categories in the top 25% including top 4% MILK, top 5% Claw, and Top 10% Angle. We expect great longevity and fertility out of her future heifers and good footed athletic bulls who can cover a large herd of cattle.

Her striking Pathfinder Resource dam was one-of-a-kind. BR 5/104, WR 5/103 She raised top-level ranchers' favorites each of her 5 years of production including her 2021 born \$6k America bull loaded with natural thickness and power and weaning off just shy of 900 lbs.

A.I. bred to M Diamond Ranahan 111 3/27/24, ultrasound safe with bull calf due January 3, 2025.



S A C Bessie Heiress 9101 - Dam of Lot 39



SAV Governor 6844 - Sire of Lot 39

39 SAC BESSIE HEIRESS 1101

BD: 1/8/2021 Reg #: 20434117 Tattoo: 1101

#Coleman Charlo 0256 #O C C Paxton 730P
S A V Governor 6844 Bohi Abigale 6014
 S A V Blackcap May 4136 #S A V 8180 Traveler 004
 #S A V May 2397
 #Jindra Acclaim
S A C Bessie Heiress 9101 Jindra 3rd Dimension
 S A C Bessie Heiress 7101 Jindra Blackbird Lassy 1111
 #S A V Registry 2831
 #S A V Bessie Heiress 4149

ANGUS
Powered by Neogen GenSeek

| | |
|------------------|-------|
| BW | 70 |
| BWR | 107 |
| WW | 650 |
| ADJ 205 | 685 |
| WWR | 103 |
| Dam's Production | 3/102 |

| CED | BW | WW | YW | Milk | SC | Marb | REA | Fat | HP | Claw | Angle | SM | SC |
|-----|-----|-----|-----|------|------|------|------|-------|------|------|-------|-----|-----|
| 5 | 3.1 | 71 | 128 | 27 | 1.05 | 0.62 | 0.81 | 0.012 | 13.2 | 0.51 | 0.29 | 62 | 280 |
| 41% | 58% | 35% | 19% | 58% | 19% | 56% | 25% | 70% | 26% | 32% | 1% | 45% | 15% |

A solid-gold brood cow prospect with the natural thickness, volume and fleshing ability to excel under range conditions. She has raised two solid built bull calves in her production career.

Her easy fleshing Acclaim dam is high in fertility as she's stuck AI all 4 years. Her 2023 \$10.5K explosive Downpour bull calf, SAC Hurricane 3794 sold to Flick Farms, weaned off at 790 lbs., and weighed 902 at booster shots. He ranks in the top 5% for phenotype of our 2023 bull calves. Also, she's the dam of a fancy Downpour heifer from 2022 Belles of the Grade Female Sale, purchased by Blue Valley Angus, McCool Junction, NE.

4149 is a pathfinder 3rd dam to 1101, and is a full sister, to SAV Heavy Hitter 6347.

Pasture exposed to SAC Rainfall 1747, ultrasound safe due March 9, 2025.



40 SAC ABIGALE 3426

BD: 1/19/2023 Reg #: 20695750 Tattoo: 3426
 #Sitz Stellar 726D #Mohnen Substantial 272
Sitz Resilient 10208 SITZ Pride 200B
 Sitz Miss Burgess 1856 #Sitz Top Game 561X
 Sitz Miss Burgess 4381
 #Coleman Charlo 0256
 S A V Rainfall 6846 S A V Blackcap May 4136
S A C Abigale 8426 #S A V Net Worth 4200
 #S A V Abigale 7425 S A V Abigale 4303

ANGUSGS
 Powered by Neogen GenesSeek

| | |
|------------------|-------|
| BW | 83 |
| BWR | 114 |
| WW | 695 |
| ADJ 205 | 713 |
| WWR | 109 |
| Dam's Production | 5/104 |

| CED | BW | WW | YW | Milk | SC | Marb | REA | Fat | HP | Claw | Angle | SM | SC |
|-----|-----|-----|-----|------|------|------|------|--------|------|------|-------|-----|-----|
| 1 | 3.7 | 78 | 146 | 28 | 0.78 | 0.27 | 0.71 | -0.005 | 20.8 | 0.33 | 0.39 | 73 | 227 |
| 74% | 73% | 18% | 14% | 40% | 39% | 76% | 29% | 19% | 1% | 3% | 12% | 25% | 80% |

An Abigale attraction with performance, maternal, and great foot structure to anchor a program. Her heifer pregnancy ranked in the Top 1% and her pathfinder granddam was one of the best in her class and a ranch favorite.

Her rainfall dam is the real deal WR 4/103- Moderate height, high-capacity udder, donor quality appeal and big bodied. Also, just a doll with her docility. The SAC team loves her! Network Pathfinder Granddam SAV Abigale 7425 has created a heavy-milking maternal team of daughters on the ranch. WR 7/102

Pasture exposed to Koupals B&B Logo Maker 25 and SAC Jacob 3023, ultrasound safe with bull calf due March 25, 2025.



Ryn Mutton Busting



SAC Abigale 8422 - Dam of Lot 41



Abby and Sam with Rimrock

41 SAC ABIGALE 1422

BD: 1/29/2021 Reg #: 20683667 Tattoo: 1422

#Sinclair Emulation XXP
S A V XXP Emulation 7968
 #S A V Primrose 9630

S A V Rainfall 6846
S A C Abigale 8422
 #S A V Abigale 7425

#N Bar Emulation EXT
 #N Bar Primrose Y3051
 #Waimata E230
 S A V Primrose 4281
 #Coleman Charlo 0256
 S A V Blackcap May 4136
 #S A V Net Worth 4200
 S A V Abigale 4303

| | |
|-----------------|-------|
| BW | 64 |
| BWR | 92 |
| WW | 560 |
| ADJ 205 | 613 |
| WWR | 93 |
| Ind. Production | 1/104 |

| CED | BW | WW | YW | Milk | SC | Marb | REA | Fat | HP | Claw | Angle | SM | SC |
|-----|-----|----|-----|------|------|------|------|-------|-----|------|-------|-----|-----|
| 10 | 1.1 | 58 | 104 | 29 | 0.84 | 0.55 | 0.03 | 0.048 | 9.4 | 0.46 | 0.49 | 40 | 161 |
| % | % | % | % | % | % | % | % | % | % | % | % | 95% | 95% |

A 2021 born Abigale bred cow with a fresh pedigree sire by SAC's herd bull, SAV XXP Emulation 7968, a paternal brother of \$800k SAV Elation 7899. The Emulation or Emulous line of cattle is known for great marbling, high fertility and docility. This statement shines through in her beautiful 2023 born heifer who was one of the first Panther daughters born and retained at Scott Angus Cattle and is a paternal sister to Lot 11: SAC Pride 3201.

Network Pathfinder Granddam SAV Abigale 7425 has created a heavy-milking maternal team of daughters on the ranch. WR 7/102

Pasture exposed to Sitz Resilient 536J, ultrasound safe due February 27, 2025.



SAC Elba 8406 • Dam of Lot 42



Tehama Patriarch F028 • Sire to 42

42 SAC ELBA 3405

BD: 2/17/2023 Reg #: 20705361 Tattoo: 3405

#S S Niagara Z29
Tehama Patriarch F028
 Tehama Elite Blackbird D826
 #S A V Sensation 5615
S A C Elba 8406
 S A V Elba 1406

#Hoover Dam
 Jet S S X144
 #Connealy Thunder
 Tehama Elite Blackbird Z630
 #S A V Registry 2831
 S A V Blackcap May 4136
 Rito 707 of Ideal 3407 7075
 S A V Elba 1094

ANGUSGS
 Powered by *VanGen* GeneSeek

| | |
|------------------|------|
| BW | 73 |
| BWR | 100 |
| WW | 516 |
| ADJ 205 | 569 |
| WWR | 100 |
| Dam's Production | 2/93 |

| CED | BW | WW | YW | Milk | SC | Marb | REA | Fat | HP | Claw | Angle | SM | SC |
|-----|-----|-----|-----|------|-----|------|------|--------|------|------|-------|-----|-----|
| 6 | 0.8 | 64 | 116 | 26 | 0.2 | 0.58 | 0.83 | -0.031 | 12.6 | 0.4 | 0.43 | 64 | 269 |
| 64% | 55% | 47% | 40% | 47% | 80% | 74% | 25% | 5% | 49% | 24% | 46% | 50% | 40% |

This intriguing Patriarch replacement heifer blends calving-ease with great ribeye scores –the unique combination sought after by the angus breeder. Her brawny flush brother, SAC Abraham 3020 brought \$8.5K on the 2024 SAC Production sale and has powerful phenotype and explosive growth.

Her maternal granddam, Elba 1406, a powerful, broody, and deep bodied donor cow and maternal sister to SAV Peacemaker 3179. Her \$100k dam, SAV Elba 1094, was a model Angus cow, the #1 milk EPD and ranks in the top 3 highest-income-producing cows in SAV history.

Pasture exposed to SAC Jacob 3023, ultrasound safe due April 19, 2025.



SAC Elba 9233 - Dam of Lot 43

43 SAC ELBA 2233

BD:1/12/2022 Reg #: 20415465 Tattoo: 2233
 Marcys Scale Crusher #Sitz Upward 307R
S A V Scale House 0845 #Marcys Erica 393
 S A V Blackcap May 1416 Rito 707 of Ideal 3407 7075
 S A V Blackcap May 4136
 #Coleman Charlo 0256
 #S A V Raindance 6848 S A V Blackcap May 4136
S A C Elba 9233 #Boyd New Day 8005
 S A V Elba 4236 S A V Elba 1094

| | |
|------------------|------|
| BW | 72 |
| BWR | 103 |
| WW | 668 |
| ADJ 205 | 707 |
| WWR | 102 |
| Dam's Production | 3/98 |

| CED | BW | WW | YW | Milk | SC | Marb | REA | Fat | HP | Claw | Angle | SM | SC |
|-----|-----|----|-----|------|------|------|------|--------|-----|------|-------|-----|-----|
| 7 | 3.3 | 73 | 134 | 24 | 0.64 | 0.15 | 0.69 | -0.032 | 9.2 | 0.47 | 0.48 | 51 | 246 |
| % | % | % | % | % | % | % | % | % | % | % | % | 75% | 40% |

We love our Scale House daughters and this young Elba cow is one of the reasons why! SAC Elba 2233 has a deep thick body with a long straight top line. Her calves are sure to put pounds on the scale and protect your bottom line with excellent weaning, yearling and carcass EPDs ranking her top 10% in Feedlot Value (\$F).

Three paternal brothers were sale highlight spectacle on the 2023 SAC Production Sale and averaged over \$6K.

Her Raindance dam is a big long 5-year-old cow has stuck AI'd every year and raised a standout LD Capitalist 316 bull as a first calf heifer and 2233 is her first daughter. Her flush sisters have made a statement too - 9232 (BR 4/101,WR 3/101) has raised 3 AI'd sticky females and a bruiser 2024 born Profound bull calf and SAV Elba 9893 (dam of SAV Bandit 2115) born and raised at SAC was a numerous championship winning show heifer for Kourtney Schaff with Schaff Angus Valley.

Pasture exposed to SAC Rainfall 1747, ultrasound safe due April 9, 2025.



Gonsior Blackbird SAV C1082 - Dam of Lot 44



S Armstrong -AI Bred Sire to Lots 26 and 44

44 SAC BLACKBIRD 3081

BD:2/9/2023 Reg #: 20705359 Tattoo: 3081
 #Mohnen Substantial 272 #Benfield Substance 8506
 #Sitz Stellar 726D Mohnen Glyn Mawr Elba 1758
 SITZ Pride 200B #Connealy Final Product
 #Sitz Pride 308Y
 #S A V Resource 1441 Rito 707 of Ideal 3407 7075
Gonsior Blackbird SAV C1082 S A V Blackcap May 4136
 S A V Blackbird 1082 #S A F 598 Bando 5175
 #S A V Blackbird 4036

ANGUSGS
 Powered by Noogen GeneSeek

| | |
|------------------|-------|
| BW | 79 |
| BWR | 100 |
| WW | 558 |
| ADJ 205 | 621 |
| WWR | 100 |
| Dam's Production | 1/100 |

| CED | BW | WW | YW | Milk | SC | Marb | REA | Fat | HP | Claw | Angle | SM | SC |
|-----|-----|-----|-----|------|------|------|------|-------|------|------|-------|-----|-----|
| 1 | 2.9 | 86 | 149 | 21 | 0.51 | 0.15 | 0.44 | 0.059 | 13.1 | 0.31 | 0.33 | 42 | 217 |
| 87% | 80% | 10% | 18% | 83% | 62% | 89% | 66% | 76% | 31% | 2% | 4% | 95% | 85% |

A new generation Blackbird bred heifer with capacity, softness, body and bloom - the kind that will rise to the top of the herd and improve feet (top 2% in Claw and Angle) and scale weights in the herd's progeny. She is backed by some of the strongest maternal cows in the business.

Her dam, C1082, is a Resource daughter of SAV Blackbird 1082, granddam of the proven maternal Genex sire SAV Pioneer 7301 and SAV Pyramid 8186 featured at Accelerated Genetics. SAV Blackbird 1082 is the performance matriarch who records a weaning ratio of 5/107 and produced the top 205-day weight bull in SAV history.

A.I. bred to S Armstrong 4/25/24, ultrasound safe with heifer calf due February 1, 2025.





45 SAC PRIMROSE 3036

BD:1/10/2023 Reg #: 20721896 Tattoo: 3036

#Sitz Stellar 726D
Sitz Resilient 10208
 Sitz Miss Burgess 1856

#S A V Purebred 4896
SAC Primrose 1036
 SAC Primrose 8036

#Mohnen Substantial 272
 SITZ Pride 200B
 #Sitz Top Game 561X
 Sitz Miss Burgess 4381
 #S A V Pioneer 7301
 S A V Blackcap May 8051
 #S A V President 6847
 S A V Primrose 2035

| | |
|------------------|-------|
| BW | 64 |
| BWR | 99 |
| WW | 645 |
| ADJ 205 | 698 |
| WWR | 106 |
| Dam's Production | 1/106 |

| CED | BW | WW | YW | Milk | SC | Marb | REA | Fat | HP | Claw | Angle | SM | SC |
|-----|----|----|-----|------|----|------|-----|-----|----|------|-------|----|----|
| 5 | 1 | 77 | 129 | 25 | | | | | | | | 94 | |
| % | % | % | % | % | % | % | % | % | % | % | % | 2% | |

This unique and versatile outcross Resilient bred heifer is an exciting result of up-and-coming Purebred 2021 born cow stemming back to the oldest cow family at SAV - Primrose Mistress/Primrose. Ranking in the Top 3% in \$M she is sure to carry on the Primrose family legacy of fertility and longevity.

Her massive, big-bodied Potential 3rd dam 2035 sports a nice square udder with great flushing ability. Her Regard son, SAC Rifle 2864, sold to Johnny Jefferies of Norfolk, NE was a great carcass bull and ranked in the top 20% of 11 EPD categories.

\$165K Resilient has made a positive impact on our herd. SAC Primrose 3036 had 10 paternal brothers on the SAC Production Sale this year and they averaged \$5,700 including major league curve-bender \$9K SAC Granite 3206.

A.I. bred to Ellingson Badlands 0285 4/30/24, ultrasound safe due February 6, 2025.



SAV Primrose 2035 - 3rd Dam of Lot 45



Ellingson Badlands 0285 - AI Bred Sire to Lot 45





SIMANGUS



SAV Blackcap May 7306 - Dam of Lots 46 and 47



LCDR Patriot - AI Bred Sire to Lot 46

46 SAC BLACKCAP MAY 2306K Black Polled

BD: 2/10/2022 Reg #: 4157015 Tattoo: 2306K
 W/C LOADED UP 1119Y REMINGTON LOCK N LOAD54U
W/C BANKROLL 811D AUBREYS BLACK BLAZE III
 MISS WERNING KP 8543U WAGR DREAM CATCHER 03R
 MISS WERNING 534R
 A A R NEW TREND
 BOYD NEW DAY 8005 S V F FOREVER LADY 57D
S A V BLACKCAP MAY 7306 S A V 8180 TRAVELER 004
 S A V BLACKCAP MAY 4136 S A V MAY 2397

| | |
|------------------|-----|
| BW | 100 |
| BWR | |
| WW | 602 |
| ADJ 205 | 659 |
| WWR | |
| Dam's Production | |

| CED | BW | WW | YW | Milk | MWW | Doc | CW | YG | Marb | BF | REA | API | TI |
|------|-----|------|-------|------|------|------|------|-------|------|-------|------|-------|------|
| 13.7 | 1.8 | 88.5 | 134.3 | 24.6 | 68.9 | 12.5 | 42.1 | -0.09 | 0.22 | 0.004 | 0.74 | 112.5 | 81.6 |
| 40% | 85% | 15% | 20% | 45% | 20% | 50% | 25% | 85% | 75% | 95% | 40% | 85% | 50% |

A SimAngus Blackcap May breeding piece out of the eminent pathfinder SAC donor SAV Blackcap May 7306 sired to \$205K W/C Bankroll 811D. 2036K's flush brothers were hot items on the 2022 SAC Production Sale – major width, power, durability and an added punch of heterosis! SAC retained one flush brother, SAC Riverbank 2113K, and have been thrilled with his ability to cover a large herd even as a yearling.

Her legendary granddam, SAV Blackcap May 4136, is the Angus breed's most influential genetic contributor and top income producing cow at SAV.

Bankroll is the talk of the Simmental world to this day with moderate birth, spring of rib, and volume. He is one of the most complete and intriguing animals Wernings have ever raised!

A.I. bred to LCDR Patriot 5/2/24, ultrasound safe with heifer calf due February 8, 2025.



SIMANGUS



Felt Perseverance - Sire of Lots 48,49

48 SAC BLACKCAP MAY 4576M Black Polled

BD:2/14/2024 Reg #: 4375228 Tattoo:4576M
 W/C EXECUTIVE ORDER 8543B W/C UNITED 956Y
FELT PERSEVERANCE 302F MISS WERNING KP 8543U
 RUBYS RHYTHM Z231 SVF/NJC BUILT RIGHT N48
 RUBYS RHYTHM S647
 S A V RESOURCE 1441 RITO 707 OF IDEAL 3407 7075
S A V BLACKCAP MAY 4574 S A V BLACKCAP MAY 4136
 S A V BLACKCAP MAY 5530 B C C BUSHWACKER 41-93
 S A V MAY 7238

| | |
|------------------|-----|
| BW | 79 |
| BWR | |
| WW | 613 |
| ADJ 205 | 671 |
| WWR | |
| Dam's Production | |

| CED | BW | WW | YW | Milk | MWW | Doc | CW | YG | Marb | BF | REA | API | TI |
|------|-----|------|-------|------|------|------|------|-------|------|--------|-----|-------|------|
| 11.9 | 0.8 | 81.9 | 130.1 | 21.1 | 61.8 | 11.9 | 43.5 | -0.18 | 0.06 | -0.028 | 0.8 | 113.8 | 73.7 |
| 60% | 65% | 30% | 25% | 75% | 55% | 60% | 20% | 65% | 95% | 70% | 30% | 85% | 80% |

A strategic mating move combining the historic Blackcap may cow family to the Simmental up-and-coming baldy W/C Executive Order son, Felt Perseverance 302F. She has a great spread from BW (.8) to YW (130) and excellent docility and height.

Her Resource dam, SAV Blackcap May 4574 is a maternal sister to \$180,000 SAV Regard 4863, \$67,500 SAV Robust 4858, and the \$55,000 SAV Rematch 4860. 4574 has consistently provided bulls with thickness, muscle-shape, and superior stoutness - built solid and strong for the ranch world. Two brute flush brothers to 4576M will sell on the upcoming SAC Production Sale this February.

FELT Perseverance 302F is a proven calving ease bull that is bringing great weaning weights in the back side! He has sired many champions in his campaign including Reserve Champion PB Simmental bull 2022 Black Hills Stock show selling for \$10,000 Champion JR heifer calf at 2022 American Royal also National Champion cow calf pair 2022 NJSS. He is an elite son of W/C Executive Order with high end performance and longevity.





SIMANGUS

49 SAC BLACKCAP MAY 3576L Black Polled

BD:5/26/2023
 W/C EXECUTIVE ORDER 8543B
FELT PERSEVERANCE 302F
 RUBYS RHYTHM Z231
 S A V RESOURCE 1441
S A V BLACKCAP MAY 4574
 S A V BLACKCAP MAY 5530

Reg #: 4375224
 W/C UNITED 956Y
 MISS WERNING KP 8543U
 SVF/NJC BUILT RIGHT N48
 RUBYS RHYTHM S647
 RITO 707 OF IDEAL 3407 7075
 S A V BLACKCAP MAY 4136
 B C C BUSHWACKER 41-93
 S A V MAY 7238

| | |
|------------------|-----|
| BW | 60 |
| BWR | |
| WW | 595 |
| ADJ 205 | 625 |
| WWR | |
| Dam's Production | |

| CED | BW | WW | YW | Milk | MWW | Doc | CW | YG | Marb | BF | REA | API | TI |
|------|-----|------|-------|------|------|------|------|-------|------|--------|-----|-------|------|
| 11.9 | 0.8 | 81.9 | 130.1 | 21.1 | 61.8 | 11.9 | 43.5 | -0.18 | 0.06 | -0.028 | 0.8 | 113.8 | 73.7 |
| 60% | 65% | 30% | 25% | 75% | 55% | 60% | 20% | 65% | 95% | 70% | 30% | 85% | 80% |

A May 2023 born full sister to virgin heifer Lot 48: SAC Blackcap May 4576M with similar features and strengths. Great calving ease, growth potential, milking ability and docility - she'll make a great herd addition with a punch of heterosis.

SAV Blackcap May 4574 was the front cover feature of the 2022 SAV Catalog.

Co-owned with Crossroads Cattle Co. She is a headliner donor, and productive brood matron, representing one of the best to roam SAV pastures. A proven herd sire, producer, generating \$238,000 on 18 progeny, averaging \$13,222 in past SAV sales, including SAV Expansion 9088 the \$50,000 featured Lot 1 in the 2020 SAV sale, as well as the \$45,000 SAV Crush 0935, the \$29,000 SAV Lifeblood 1163 her high-weaning son in the 2022 SAV sale, the \$19,000 SAV Expansion 7170, SAV Big Rig 0934, and more.



Tyler, Tommy and A.J. working on the SAC Sale Barn.

Scot Angus Cattle wants to sincerely thank all of the helping hands that contribute to our ranch's success. We appreciate all you do!



BRED COMMERCIAL LOTS

50 BRED HEIFERS GROUP A

This group includes two Stellar sired heifers.

Eleven bred commercial replacement heifers born between January 5, 2023 and March 7, 2023. Pasture exposed to Dodds Ease K06, SAC Accolade 2000, and Poss Remington 351.

Ultrasound safe on July 12, 2024 and due to calve February 19, 2025 through March 16, 2025

51 BRED HEIFERS GROUP B

52 BRED HEIFERS GROUP C

53 BRED YOUNGER COWS

54 BRED MATURE COWS

55 BRED MATURE COWS

Thirteen bred commercial cows used in our embryo transfer recipient program and bred by SAC herd sires. Details by cow will be supplemented separately. Ultrasound safe in July 2024 and due to calve February 15th, 2025 through April 1st, 2025.





S A V PRIMROSE 2035 EMBRYOS

Embryos

#S A V Pioneer 7301
#S A V Potential 0205
 S A V Elba 7021

#S A V 8180 Traveler 004
#S A V Primrose 6628

#S A V Primrose Mistress 1170

#S A V Final Answer 0035
 S A V Blackbird 5297

#S A V 004 Density 4336
 S A V Elba 2425

#Sitz Traveler 8180
 Boyd Forever Lady 8003

#S A F 598 Bando 5175
 S A V Primrose Mistress 9251

| CED | BW | WW | YW | Milk | SC | Marb | REA | Fat | HP | Claw | Angle | SM | SC |
|-----|-----|----|-----|------|-----|------|------|--------|-----|------|-------|-----|-----|
| 2 | 1.3 | 58 | 105 | 21 | 1.1 | 0.06 | 0.52 | -0.035 | 4.7 | 0.56 | 0.58 | 23 | 197 |
| % | % | % | % | % | % | % | % | % | % | % | % | 95% | 85% |



SAV Renown 6822



SAV President 6847

56A S A V Primrose 2035 AAA 17249319 x SAV RENOVATION 6822
 AAA 18579309 (5 embryos)

Five embryos out of our attractive Potential donor, SAV Primrose 2035. This massive, big-bodied cow sports a nice square udder and has great flushing ability. 2035 is a maternal 3rd dam to lot 45, SAC Primrose 3036, the versatile outcross Resilient bred heifer ranking top 3% in \$M.

Her Regard son, SAC Rifle 2864, sold to Johnny Jefferies of Norfolk, NE was a great carcass bull and ranked in the top 20% of 11 EPD categories.

Renovation is a standout as far as phenotype and structural soundness. One of SAV Renown's top sons in the industry.

56B S A V Primrose 2035 AAA 17249319 x SAV President 6847
 AAA18578964 (5 embryos)

A second mating out of SAV Primrose 2035. SAV President 6847 was the world record and top-selling bull of the 2017 SAV sale at \$750,000 with a total valuation of \$938,500. Incredible in his structure and powerful in his design, President is a son out of the No. 1 income producing cow in SAV history, SAV Blackcap May 4136. To date, she has produced over \$10 million dollars in progeny sales.





SAV Emblynette 3240 Embryos

SAV EMBLYNETTE 3240 EMBRYOS

Embryos

#Bon View Bando 598
#S A F 598 Bando 5175
 S A F Royal Lass 1002

#Bon View Balance 834
#S A V Miss Emblynette 7369
 B&B Miss Big Sky 2013

#Tehama Bando 155
 #Bon View Dora 56
 #V D A R New Trend 315
 S A F Royal Lass 6089
 #TC Dividend 963
 Bon View Princess 169
 #Pine Drive Big Sky
 B&B Miss Sophisticated 8133

| CED | BW | WW | YW | Milk | SC | Marb | REA | Fat | HP | Claw | Angle | SM | SC |
|-----|----|----|----|------|------|------|------|------|------|------|-------|-----|-----|
| -2 | 5 | 58 | 98 | 36 | 0.71 | 0.4 | 0.28 | 0.02 | 10.4 | 0.48 | 0.54 | 55 | 260 |
| % | % | % | % | % | % | % | % | % | % | % | % | 65% | 30% |

57A **SAV Emblynette 3240 AAA14454882 x SAV America 8018 AAA19249580 (5 embryos)** - These embryos are out of the prolific pathfinder dam, SAV Emblynette 3240. (WR 9/107, YW 7/106) She has proved time, and time again her dominance in the Angus breed over the span of her 18-year production.

Renown son Blackline Plainsman 9341 - an exceptional power bull who has been leading the semen sales for Sire Buyer. Her Cut Above son, Top Notch; her President son, Popular Vote; and her Ajax son, Warrior have all been retained as herd sires at SAC. 8 daughters out of 3240 are also retained in our herd. SAV America 8018 is the top-selling, world-record son of President. He literally shattered every record including the all-time record at Schaff Angus Valley for 205-day weight at 1107 pounds and the most money ever paid for a bull in history, selling for 80% semen interest at 1.51 million dollars. He is a "one of a kind" breeding piece, resulting from the last embryo produced out of the legendary SAV Madame Pride 0075, who has produced over \$5.5 million dollars in progeny sales to date. America is truly unique.

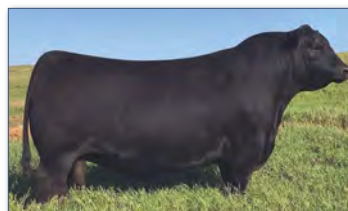
57B **SAV Emblynette 3240 AAA14454882 x SAV Rainfall 6846 AAA18578963 (5 embryos)** - A second mating out of SAV Emblynette 3240 sired by SAV Rainfall 6846. Rainfall is a standout from a landmark flush at Schaff's Angus Valley with credentials to write a new chapter in Angus history. His Dam SAV Blackcap May 4136, is the #1 income cow in SAV history. He combines phenotype, confirmation, muscle shape, capacity and pounds.

57C **SAV Emblynette 3240 AAA14454882 x SAV Bloodline 9578 AAA19542324 (5 embryos)** - A third mating out of SAV Emblynette 3240 sired by SAV Bloodline 9578. SAV Bloodline 9578 combines a curve bending EPD profile with majestic herd bull presence, length of front, massive volume, expressive shape and breed-

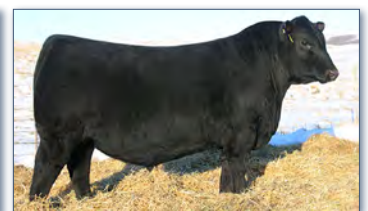
changing type, a force to be reckoned with in the Angus breed. The popular lead-off and second top-selling bull from the 2020 SAV sale. He is sired by SAV Rainfall 6846, who is the number one semen sales sire at Select Sires and flush brother to SAV Raindance 6848.



SAV Rainfall 6846



SAV America 8018



SAV Bloodline 9578

BLACKCAP MAY 7306 EMBRYOS



S A V BLACKCAP MAY 7306

Embryos

#A A R New Trend
#Boyd New Day 8005
S V F Forever Lady 57D

#S A V 8180 Traveler 004
S A V Blackcap May 4136
#S A V May 2397

#V D A R Shoshone 548
Donna A A R 74
#Leachman Right Time
S V F Forever Lady 1128
#Sitz Traveler 8180
Boyd Forever Lady 8003
#S A F 598 Bando 5175
S A V May 7238

| CED | BW | WW | YW | Milk | SC | Marb | REA | Fat | HP | Claw | Angle | SM | SC |
|-----|-----|-----|-----|------|------|------|------|-------|-----|------|-------|-----|-----|
| 6 | 2 | 65 | 116 | 42 | 0.22 | 0.6 | 0.27 | 0.041 | 9 | 0.44 | 0.52 | 57 | 222 |
| 82% | 71% | 30% | 36% | 1% | 75% | 44% | 65% | 67% | 84% | 17% | 74% | 60% | 65% |

58 SAV Blackcap May 7306 AAA15688405 x Sitz Virtue 11710 AAA19665175 (3 embryos) - 7306, a 16 year old, pathfinder Boyd New Day 8005 direct daughter to the legendary dam SAV Blackcap May 4136. 4136 is the Angus breeds most influential genetic contributor, and top income-producing cow, generating \$10.2 million. 7306 has four natural bull progeny averaging \$18k on past SAV sales, including the \$25k #1 yearling weight bull at 1707 pounds in the 2015 sale. 7316, a stunning Regard direct daughter of 7306, is also in the flush program at SAC.

7306's third-generation pathfinder dam, SAV May 2397, is the third top income-producing cow in SAV history. We raised allot of 2397 ET calves for SAV, they were easily some of our best calves to watch grow up here at SAC, including SAV Angus Valley.

The power, mass, bone and substance Sitz Virtue 11710 offers is hard to find and SAC had one of his first calf crops to display at the 2024 SAC Production sale with seven heavy hitters and the top three averaged 17,000.



Sitz Virtue 11710

ELBA 4236 EMBRYOS



S A V ELBA 4236

Embryos

#A A R New Trend
#Boyd New Day 8005
S V F Forever Lady 57D

#S A F Bando 5175
S A V Elba 1094
S A V Elba 7099

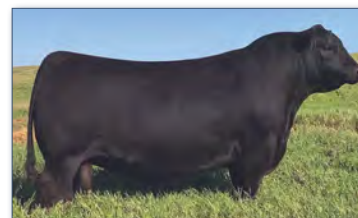
#V D A R Shoshone 548
Donna A A R 74
#Leachman Right Time
S V F Forever Lady 1128
#Bon View Bando 598
S A F Royal Lass 1002
#D H D Traveler 6807
#S A V Elba 5283

| CED | BW | WW | YW | Milk | SC | Marb | REA | Fat | HP | Claw | Angle | SM | SC |
|-----|------|-----|-----|------|------|------|------|-------|------|------|-------|-----|-----|
| 7 | 3.7 | 59 | 106 | 34 | 0.41 | 0.2 | 0.29 | 0.008 | 13.8 | 0.37 | 0.49 | 53 | 223 |
| 40% | 951% | 50% | 50% | 10% | 80% | 95% | 85% | 45% | 25% | 5% | 50% | 70% | 65% |

59 SAV Elba 4236 AAA14739177 x SAV America 8018 AAA19249580 (5 embryos) - The beautiful New Day donor, SAV Elba 4236, is an impressive female with her own length and depth of body, fit into a perfect udder and was a third generation SAV embryo donor. She has five daughters retained in the SAV herd and five progeny averaging \$15,700 in past SAV sales. She was in production for SAC for over five years showing her fertile longevity.

SAC retained her 2020 born President daughter, 0236, a super maternal broody donor prospect with excellent milk currently raising an Ellingson Badlands bull calf who will be sold on the 2025 SAC Production sale.

SAV America 8018 is the world record breaking Angus bull, at \$1.51 million USD and the heaviest 205 day weight bull in SAV history and the entire USA Angus register at 1107 lbs. America has been used heavily in both our AI and ET programs. SAV America 8018 is +33 for docility ranking him in the top 2% of the Angus breed.



SAV America 8018





S A C BLACKCAP MAY 7316

Embryos

#S A V Resource 1441
#S A V Regard 4863
 #S A V Blackcap May 5530

#Boyd New Day 8005
#S A V Blackcap May 7306
 S A V Blackcap May 4136

Rito 707 of Ideal 3407 7075
 S A V Blackcap May 4136
 #B C C Bushwacker 41-93
 S A V May 7238
 #A A R New Trend
 S V F Forever Lady 57D
 #S A V 8180 Traveler 004
 #S A V May 2397

| CED | BW | WW | YW | Milk | SC | Marb | REA | Fat | HP | Claw | Angle | SM | SC |
|-----|-----|----|-----|------|------|------|-----|--------|------|------|-------|-----|-----|
| -9 | 5.7 | 97 | 165 | 41 | 1.03 | 0.27 | 0.9 | -0.018 | 12.5 | 0.43 | 0.47 | 55 | 248 |
| 96% | 87% | 1% | 3% | 1% | 45% | 78% | 10% | 10% | 49% | 33% | 57% | 65% | 40% |

60 SAC Blackcap May 7316 AAA19903384 x Sitz Virtue 11710
 AAA19665175 (5 embryos)

These embryos are out of a stunning, long-bodied Regard dam 7316 is a second-generation SAC Donor and is top 1% WW, YW, and Milk! Her pride and joy, Governor daughter, 0316, is the dam of the high selling Doc Ryan heifer 2316, on the 2022 Belles of the Grade Female Sale sold to Herbster Angus. She is also the dam of bred heifer Lot 30 and 31.

Virtue has made some absolute bruiser bulls for us. SAC Integrity 3705 was a family favorite for his rock- solid leg and foot structure, straight top, and clean front.



Sitz Virtue 11710







20898 N 465th Street
Belgrade, NE 68623

TIME SENSITIVE MATERIAL
PLEASE DELIVER IMMEDIATELY

First-Class Mail
US Postage
PAID
LivestockDirect



Belles

OF THE GRADE

SCOTT ANGUS CATTLE • 10/23/24 • 2 P.M. • SELECT FEMALE SALE

OFFERING ANGUS & SIMANGUS

VIRGIN HEIFERS • BRED HEIFERS • BRED COWS • ELITE EMBRYOS
COMMERCIAL BRED HEIFERS • COMMERCIAL BRED COWS

