

B
BRUNING FARMS
PRODUCTION SALE

SUNDAY, MARCH 17, 2024

1:00 PM · FAIRBURY LIVESTOCK CO., FAIRBURY, NE







Welcome

Thank you for your interest in our 2024 production sale!

We are pumped to offer a consistent group of bulls loaded with exponential growth and performance. Our operation differs in the way its modeled to take our genetics through the entire production cycle; by developing and finishing each calf crop, we are tracking reproductive efficiencies as well as end product performance. Using this model we have always known that good cattle are a product of genetics, environment, and management, combined and acknowledge the obligation we have to make every decision based on what we believe is the best for our customers, and so as an industry we can progressively breed better beef.

Reiss Bruning

**REISS BRUNING
BRUNING FARMS**

A WORD OF THANKS

A whole lot of thanks to all the moving parts of this event - not just sale day, but the whole year round. We are blessed with friends and neighbors who support our vision for this family farm. Y'all know who you are, but just for posterity's sake, let's name names:

Cody Garland
Cory Voss
Brandon Fangmeier
David Rippe
Adam Bruning

PRAISE TO THE PROS

ET GURUS: *Cross Country Genetics, Manhattan, Kan.*

Clay Breiner, DVM
Kendra Breiner, DVM
Joel Anderson, DVM
Troy Marple

VETERINARY EXTRAORDINAIRE: *Sutton Vet Clinic, Sutton, Neb.*

Michael Cox, DVM
Steve Gemar, DVM

CREDIT WHERE ITS DUE

COOPERATORS: *Spectacle Angus*

Kenny & Misty Stauffer
Brock & Kerry Elsen

LIVESTOCK PHOTOGRAPHY: *Bruning Farms*

Ourselves! *so take it easy on us, we're learning :)*

ALL OF THE NICE PHOTOS:

It's worth mentioning that almost all of the pretty scenic photos in this year's catalog are from previous years, so Kudos to those fine ladies whose talents are still being admired!

Jen Edney, edneyepics.com

Morgan Meisenheimer, [facebook.com/MLMeisenheimer](https://www.facebook.com/MLMeisenheimer)

CATALOG CREATION:

Heather Bruning, HBC
'cause ya gotta back yourself ;)





B
→

NING FARMS

PRODUCTION SALE

CONTENTS

ABOUT US	6
OUR TOP 10 BULLS	11
FALL BULLS	13
YEARLING BULLS	21

SALE INFORMATION

SALE ORDER & SUPPLEMENT

Bulls will sell in catalog order unless otherwise stated the day of the sale. A supplement sheet with any updated information will be available at the sale and online at bruningfarms.com the day of the sale.

EPDS

Data inside this catalog is current as of March 1, 2024. Most recent EPDs can be viewed at angus.org.

DISCOUNTS

\$100 taken off your total bill if you take your purchases home the day of the sale.

LOAD OUT

Chutes are located on the east side of the sale barn. Cattle may be loaded out from the sale barn any time after checking out.

DELIVERY

Cattle will graciously be delivered for free anywhere in Nebraska or Kansas at your earliest convenience. On purchases greater than \$1000, free trucking will be provided to any destination in the Continental US.

BULL DEVELOPMENT

To ensure your new investment continues to develop with the proper pen space and nutrition, we will gladly feed purchased bulls for free until to May 1, with delivery as needed.

RETAINED SEMEN INTEREST

Bruning Farms retains 1/2 semen interest and revenue sharing interest in all bulls selling.

HEALTH PAPERS

Michael Cox, DVM of Sutton Veterinary Clinic will be available to issue appropriate health papers of all cattle selling for immediate interstate shipment. Every animal sells with their own individual Federal EID tag.

INDIVIDUAL PERFORMANCE

Measurements marked with an asterisk (*) means the animal was outside the age window allowed for adjusting the measurement to equal days of age as the rest of the contemporary group.

DNA TESTED

Each lot has been DNA tested to enhance EPD accuracy, verify parentage, and test for known genetic defects. All animals are free of any known genetic defects unless otherwise noted.

GUARANTEE ON DOCILITY

Bruning Farms has zero tolerance for poor disposition and does not allow such animals to be used for reproduction. If there is an issue with docility within the first 6 months of purchase, immediately call Reiss at 402.768.3332, and the animal will be replaced or credit will be given towards our next production sale.

GUARANTEE ON BULL FERTILITY

All bulls have passed a breeding soundness exam performed by Sutton Veterinary Clinic of Sutton, Nebraska prior to the sale. We guarantee each bull for the first breeding season against injury. We define the breeding season as 60 days from initial turnout of the bull. Should any injury occur that prevents the bull permanently from breeding, a replacement bull of equal or lesser value will be provided.





B
→

BRUNING FARMS

PRODUCTION SALE

SUNDAY, MARCH 17, 2024

1:00 PM · FAIRBURY LIVESTOCK CO., FAIRBURY, NE

SALE CONTACTS

REISS BRUNING: 402-768-3332

CODY GARLAND : 402-759-2414

BRAIDEN BENES: 402-608-0577

AUCTIONEER

RICK MACHADO: 805-501-3210

SALE REPRESENTATIVES

WILL HARSH: 000-000-0000
American Angus Association

ALAN SEARS: 970-396-1396
Western Ag Reporter

RANDY RASBY: 308-539-6195
Livestock Plus

STEPHEN RUSSELL: 785-458-2650
Kansas Livestock Association

LOCATION

*The sale will be held at the sale barn in Fairbury, Nebraska:
Fairbury Livestock Co., located on south side of Fairbury near the
intersections of highways 15 and 8.*

SCHEDULE

10 am: BARN OPEN FOR VIEWING

11:30-12:30 pm: LUNCH

1 pm: SALE BEGINS

followed by: DRINKS & FELLOWSHIP

BUY ONLINE

*watch the sale in real time and bid live at
DVAUCTIONS.COM*





FIVE BRUNING BROTHERS from Germany, came to Nebraska in 1880 - settling on a section of land east of the Burlington railroad, not yet incorporated as a town. The youngest, Frank (Diederich), purchased 320 acres which started Bruning Farms. His entrepreneurial spirit established a livestock business and fostered a love for race horses. His son, Fred H. Bruning, would focus the business on cattle, adding a feedlot in the 1930s and more grazing lands while others plowed the Nebraska plains into farmland. Instilling the passion of range management and cattle production into his son, Frank L. Bruning continued to develop grazing lands in the 1950s. Enterprising fencing systems, reseeding farmlands into native grasses and implementing persistent conservation efforts as he paved the way for son, Fred D. Bruning (*we know, it's a lot of consecutive Freds and Franks, bare with us, the next generation is about to shake it up*) and now grandson, Reiss Bruning who operates Bruning Farms with wife, Heather.

Today, Bruning Farms is a registered Angus and commercial cattle business, calving in both the spring and fall. As a U.S. Premium Beef Qualified Seedstock Provider, our goal is to produce desirable beef of the highest quality. By focusing on maternal without undermining terminal traits, our operation allows us to dial in on performance and provide relevant genetics essential for progressive cattlemen. By seeing each calf crop from birth to summer grazing and finishing in our own feedlot, we see production agriculture full circle. In doing so, we hope to positively impact our customer's operations so as an industry we can progressively breed for better beef.

TOP RIGHT: Our trusty herdsman, Cody Garland, holding everything together and taking care of business.
MIDDLE: Cow Camp continues to be our summer haven, not just because of the beholden grassland, but also as a respite from the flatlands of corn country. Just 30 miles southeast of our home in Bruning, Neb., Cow Camp is part of the small and unique Sandstone Prairie near Reynolds, Neb.
BOTTOM: Hi! We're Reiss & Heather Bruning. Thanks for taking the time to view our 2024 Production Sale offering. I know the extra content in this book is different than your typical bull sale catalog; it's a way for me to share more about us than just the cows we're selling. I am much obliged to you for scrolling through these few pages and being here to support us as we evolve this family business into the next generation.



BREED. BETTER.

BEEF.

NO MATTER WHAT SEGMENT OF THE INDUSTRY YOU ARE IN,

the end-goal is the same: the highest quality beef that yields premiums. By focusing on maternal without undermining terminal traits, we offer the genetics for just that, so as an industry we can progressively breed better beef.



THE USPB QUALIFIED SEEDSTOCK SUPPLIER LABEL

signifies that we are committed to producing high-quality genetics for all traits; especially the carcass traits required to produce premiums on a value-based grid.



We strongly believe the end product of the beef industry is the most important. Regardless of which sector you're in, the combination of quality genetics alongside good management practices makes the difference in any cattleman's bottom line.

Since 2001, all of our home-raised fed cattle have been sold through U.S. Premium Beef (USPB), a producer-owned marketing company that provides incentive through quality-based grid pricing. Before joining USPB, we felt like the cattle we were selling were above average; but our commitment to genetics and feed management weren't rewarded and really weren't sure because we had retainable data after they left the farm. Carcass data from the first years to USPB showed 88% Choice and 34.3% CAB or prime, which was more than double the national average at the time. After 20 years of tracking the data and making sound genetic selections, we're still improving: most recently, grading 99.98% Choice and 23% Prime.

As USPB Quality Seedstock Providers, we can provide progressive cattlemen with genetics to breed better beef.

EXPECTED PROGENY DIFFERENCE

THE 12 WE FIND MOST USEFUL FOR GENETIC SELECTION

In this catalog, we've focused in on the twelve Expected Progeny Differences we find most relevant. Full EPD tables and extended pedigrees are available online at angus.org by entering the animal's registration number.

CED

CALVING EASE DIRECT

is expressed as a difference in percentage of unassisted births. A higher value means fewer assisted births in first-calf heifers. Prioritize CED over BW when selecting a bull to use on virgin heifers. We consider a value of +8 or higher safe.

RE

RIBEYE AREA

expressed in square inches, is a predictor of the difference in ribeye area of a sire's progeny compared to progeny of other sires.

BW

BIRTH WEIGHT

predicts the sire's influence on birth weight to his calves, compared to that of other sires. This value is expressed in pounds; a lower number means lighter calves. Typically we choose sires that are between -1.0 and +2.5.

\$M

MATERNAL WEANED CALF VALUE

is expressed in dollars per head, predicts profitability differences from conception to weaning assuming that individuals retain replacement females and sell the rest of the cull female and all male progeny as feeder calves.

WW

WEANING WEIGHT

expressed in pounds, is a predictor of a sire's ability to transmit weaning growth to his progeny compared to that of other sires.

\$W

WEANED CALF VALUE

index, expressed in dollars per head, to predict profitability differences in progeny due to genetics from birth to weaning. Very similar to \$M, however \$W does not weigh conception, calving ease, or replacement heifer value.

YW

YEARLING WEIGHT

expressed in pounds, is a predictor of a sire's ability to transmit yearling growth to his progeny compared to that of other sires.

\$F

FEEDLOT VALUE

index, expressed in dollars per head, to predict profitability differences in progeny due to genetics for post-weaning feedlot merit compared to the progeny of other sires.

MILK

WEANING WEIGHT

a predictor of a sire's genetic merit for milk and mothering ability as expressed in his daughters compared to daughters of other sires. MILK is the Bitcoin or NFT of the EPDs... We're not sure how they came up with a number value.

\$B

BEEF VALUE

terminal index, expressed in dollars per carcass, to predict profitability differences in progeny due to genetics for post-weaning and carcass traits.

MARB

MARBLING

expressed as a fraction of the difference in USDA marbling score of a sire's progeny compared to progeny of other sires. Every cattle breeder should pay attention to this EPD to maximize the positive experiences for our consumers.

\$C

COMBINED VALUE

expressed in dollars per head, includes all traits that make up both \$M and \$B. Factors that commercial producers retain 20% of females for replacement heifers and the remaining progeny being sent to the feedlot and then marketed on a quality-based carcass merit grid.

OUR TOP 10 BULLS

THE TOP TEN LOTS RANKING IN THE TOP 10% of all American Angus Association registered cattle in each EPD category

LOT	NAME	CED	LOT	NAME	BW	LOT	NAME	WW
33	Bruning Conclusion 503	+20	33	Bruning Conclusion 503	-3.6	12	Bruning Jameson 1123	+105
51	Bruning Jameson 163	+15	40	Bruning Conclusion 673	-2.0	26	Bruning Jameson 1073	+88
40	Bruning Conclusion 673	+15	34	Bruning Incentive 1333	-1.8	11	Bruning Jameson 1203	+87
36	Bruning Jameson 683	+15	18	Bruning Conclusion 893	-1.5	46	Bruning Deposit 1463	+87
18	Bruning Conclusion 893	+15	51	Bruning Jameson 163	-1.4	17	Bruning Conclusion 443	+86
53	Bruning Conclusion 483	+13	35	Bruning Incentive 303	-1.4	16	Bruning Conclusion 1493	+86
52	Bruning Conclusion 763	+13	36	Bruning Jameson 683	-1.3	28	Bruning Conclusion 213	+86
34	Bruning Incentive 1333	+13	9	Bruning Resilient 6182	-.6	48	Bruning Deposit 1363	+86
30	Bruning SPEC Whitlock 3020	+13	52	Bruning Conclusion 763	-.5	15	Bruning Jameson 1043	+85
9	Bruning Resilient 6182	+13	29	Bruning Jameson 753	-.5	31	Bruning Conclusion 1633	+85

LOT	NAME	YW	LOT	NAME	MILK	LOT	NAME	MARB
12	Bruning Jameson 1123	+184	50	Bruning SPEC Armory 3018	+42	13	Bruning Jameson 1213	+1.68
21	Bruning Conclusion 143	+154	5	Bruning Enhance 209G 6562	+41	11	Bruning Jameson 1203	+1.57
17	Bruning Conclusion 443	+152	13	Bruning Jameson 1213	+39	23	Bruning Jameson 593	+1.53
11	Bruning Jameson 1203	+151	21	Bruning Conclusion 143	+38	4	Bruning Enhance 209G 6652	+1.43
28	Bruning Conclusion 213	+150	46	Bruning Deposit 1463	+35	32	Bruning Quantum 903	+1.34
20	Bruning Nationwide 573	+150	12	Bruning Jameson 1123	+34	37	Bruning Deposit 1373	+1.27
18	Bruning Conclusion 893	+149	14	Bruning Jameson 953	+34	5	Bruning Enhance 209G 6562	+1.26
31	Bruning Conclusion 1633	+148	36	Bruning Jameson 683	+34	57	Bruning Ballast 1683	+1.24
13	Bruning Jameson 1213	+148	19	Bruning Jameson 1083	+33	22	Bruning Deposit 773	+1.24
16	Bruning Conclusion 1493	+145	24	Bruning Quantum 1533	+33	25	Bruning Plus One 33	+1.23

LOT	NAME	RE	LOT	NAME	\$M	LOT	NAME	\$W
2	Bruning Enhance 209G 6612	+1.16	35	Bruning Incentive 303	+113	46	Bruning Deposit 1463	+93
18	Bruning Conclusion 893	+1.05	19	Bruning Jameson 1083	+94	36	Bruning Jameson 683	+91
17	Bruning Conclusion 443	+1.04	16	Bruning Conclusion 1493	+93	12	Bruning Jameson 1123	+91
3	Bruning Plus One 6242	+1.02	36	Bruning Jameson 683	+92	13	Bruning Jameson 1213	+90
14	Bruning Jameson 953	+1.00	10	Bruning Resilient 6252	+91	14	Bruning Jameson 953	+89
5	Bruning Enhance 209G 6562	+0.98	55	Bruning SPEC On Point 3022	+91	16	Bruning Conclusion 1493	+88
38	Bruning SPEC Exemplify 3014	+0.97	20	Bruning Nationwide 573	+89	19	Bruning Jameson 1083	+86
53	Bruning Conclusion 483	+0.96	56	Bruning Incentive 1513	+88	15	Bruning Jameson 1043	+85
41	Bruning Plus One 1023	+0.95	23	Bruning Jameson 593	+87	26	Bruning Jameson 1073	+84
11	Bruning Jameson 1203	+0.92	54	Bruning Incentive 663	+85	24	Bruning Quantum 1533	+83

LOT	NAME	\$F	LOT	NAME	\$B	LOT	NAME	\$C
12	Bruning Jameson 1123	+127	13	Bruning Jameson 1213	+221	13	Bruning Jameson 1213	+371
20	Bruning Nationwide 573	+124	11	Bruning Jameson 1203	+206	20	Bruning Nationwide 573	+350
30	Bruning SPEC Whitlock 3020	+118	12	Bruning Jameson 1123	+202	11	Bruning Jameson 1203	+344
42	Bruning SPEC Cold Cash 3003	+117	20	Bruning Nationwide 573	+201	14	Bruning Jameson 953	+320
13	Bruning Jameson 1213	+115	4	Bruning Enhance 209G 6652	+196	16	Bruning Conclusion 1493	+319
28	Bruning Conclusion 213	+111	5	Bruning Enhance 209G 6562	+190	23	Bruning Jameson 593	+318
16	Bruning Conclusion 1493	+110	17	Bruning Conclusion 443	+186	12	Bruning Jameson 1123	+315
21	Bruning Conclusion 143	+109	25	Bruning Plus One 33	+185	19	Bruning Jameson 1083	+313
3	Bruning Plus One 6242	+108	14	Bruning Jameson 953	+184	18	Bruning Conclusion 893	+312
18	Bruning Conclusion 893	+107	41	Bruning Plus One 1023	+184	4	Bruning Enhance 209G 6652	+311



HERD HEALTH PROTOCOL

PRE-BREEDING	Express 3 FPVL 5 + Caliber 7
PRE-CALVING	ScourGuard + MultiMin
CALF PROCESSING	Caliber 7
PRE-CONDITION WEANING	Pyramid 5 Plus Presponse
WEANING BOOSTERS	Pyramid 5 + MultiMin

IDENTIFICATION

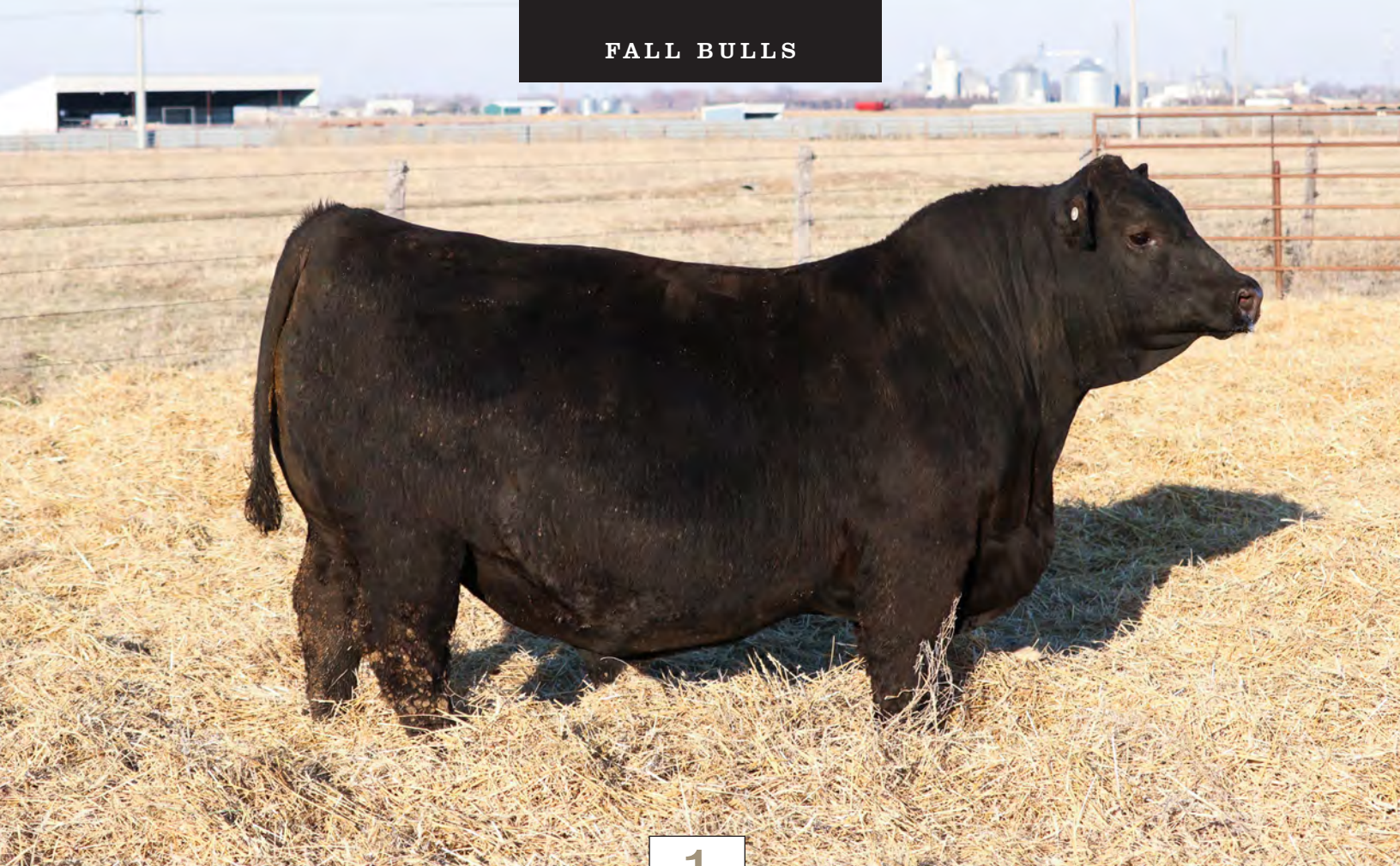
EID all cattle have individual 840 EID tags
GE-EPDS every lot has been Angus GeneSeek tested and parentage verified by DNA

READY TO WORK

Each bull has passed a breeding soundness exam performed by Michael Cox, DVM, of Sutton Veterinary Clinic, Sutton, Nebraska

INTO YOUR ENVIRONMENT

Our cattle spend the summer grazing months in large groups roaming our native grassland ranges in Nebraska' secluded Sandstone Prairie, a landscape similar to the Kansas Flint Hills. We practice intensive rotational grazing management, which requires frequent interaction with the herd on horseback, ATV, or on foot.



1

BRUNING PLUS ONE 6152

REGISTRATION NO.: 20891120 • DATE OF BIRTH: 09/04/22 • TATTOO: 6152

*Connealy Confidence 0100
Elbanna of Conanga 1209*

Connealy Confidence Plus

Rito 9Q20 of Rita 5F56 GHM

*Gardens Highmark
Rita 5F56 of 1198 FD*

E&B PLUS ONE

BRUNING LENA 6127

*E&B 1680 Precision 1023
E&B Lady 878 New Design 441*

E&B Lady 1023 Precision 936

B F Design Prime 7502

*B F Flying H Occ Emblaz 478
B F Miss Design Prime 4458*

ADJ. BW 75 • ADJ. WW 650 • SCROTAL 36.5 • %IMF 5.25* • REA 15.2* • RIBFAT .37*

CED	BW	WW	YW	MILK	MARB	RE	\$M	\$W	\$F	\$B	\$C
+8	+7	+75 TOP 20%	+137 TOP 15%	+18	+1.02 TOP 20%	+92 TOP 15%	+72	+67	+99	+174 TOP 20%	+298 TOP 15%

The only negative to owning this hunk is that his calves will take up two parking spots at the feed bunk.
Feed efficient is an understatement as he could maintain his figure on a diet of weeds and dirt.
Complete package with superior growth and carcass, as advertised in the 5.25% IMF scan.
Fat bulls need loving, too!



sire **E&B PLUS ONE**



maternal grandsire **RITO 9Q20 OF RITA 5F56**



2

BRUNING ENHANCE 209G 6612

REGISTRATION NO.: 20891116 • DATE OF BIRTH: 09/28/22 • TATTOO: 6612

SydGen Exceed 3223 ————— SydGen Enhance ————— Connealy Black Granite ————— Connealy Consensus 7229
 SydGen Rita 2618 —————
G A R ENHANCE 209G **TMG D23 OF B15 BLACK GRANITE**
 G A R Momentum ————— Ogeechee Momentum 664 ————— TMG B15 of 771 FA ————— S A V Final Answer 0035
 G A R Daybreak N542 ————— E&B Lady Predestined 771

ADJ. BW 71 • ADJ. WW 648 • SCROTAL 40.5 • %IMF 4.04* • REA 18.1* • RIBFAT .53*

CED	BW	WW	YW	MILK	MARB	RE	\$M	\$W	\$F	\$B	\$C
+7	+1.2	+71 TOP 30%	+135 TOP 15%	+23	+89 TOP 30%	+1.16 TOP 3%	+49	+61	+96	+169 TOP 20%	+268

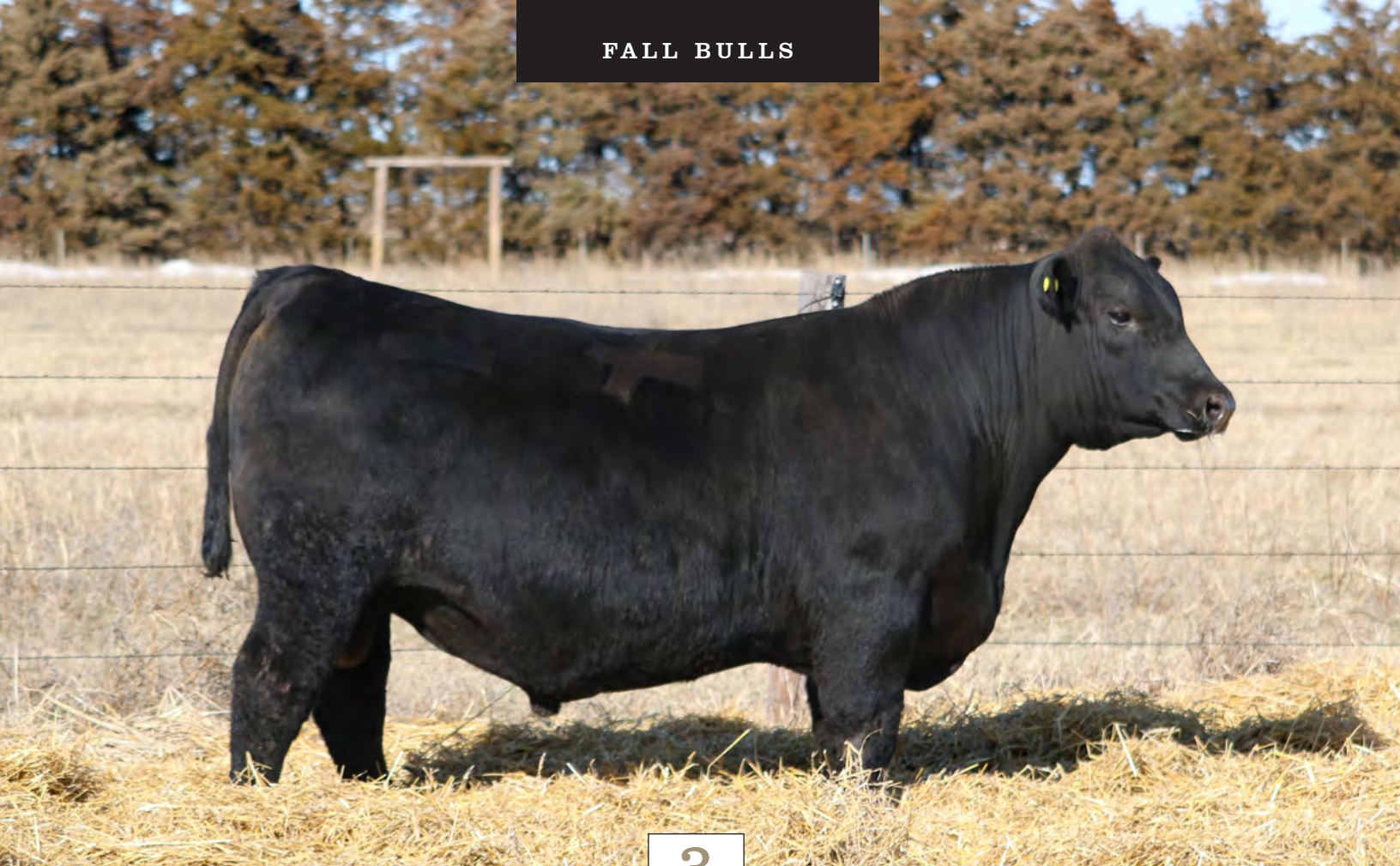
Big guy with a big ribeye, an actual scan of 18.1 square inches.
 Product of a fantastic cow is a descendant of breed legends Consensus 7229 and Final Answer.
 Her calves have averaged performance ratios of WR @ 105, YR @ 106, REA @ 109.



paternal grandsire **SYDGEN ENHANCE**



maternal grandsire **CONNEALY BLACK GRANITE**



3

BRUNING PLUS ONE 6112

REGISTRATION NO.: 20891112 • DATE OF BIRTH: 09/09/22 • TATTOO: 6112

Connealy Confidence 0100
Elbanna of Conanga 1209

Connealy Confidence Plus

Quaker Hill Manning 4EX9

EXAR Denver 2002B
Quaker Hill Blackcap 0A32

E&B PLUS ONE

BRUNING MARIANNE 1739

E&B 1680 Precision 1023
E&B Lady 878 New Design 441

E&B Lady 1023 Precision 936

TMG B60 of 127S TENX

A A R Ten X 7008 S A
SQ Lady 61 127S

ADJ. BW 64 • ADJ. WW 630 • SCROTAL 40 • %IMF 4.9* • REA 13.9* • RIBFAT .31*

CED	BW	WW	YW	MILK	MARB	RE	\$M	\$W	\$F	\$B	\$C
+9 TOP 30%	+1.4	+73 TOP 25%	+133 TOP 20%	+19	+0.80	+0.44	+59	+61	+105 TOP 20%	+161 TOP 30%	+268

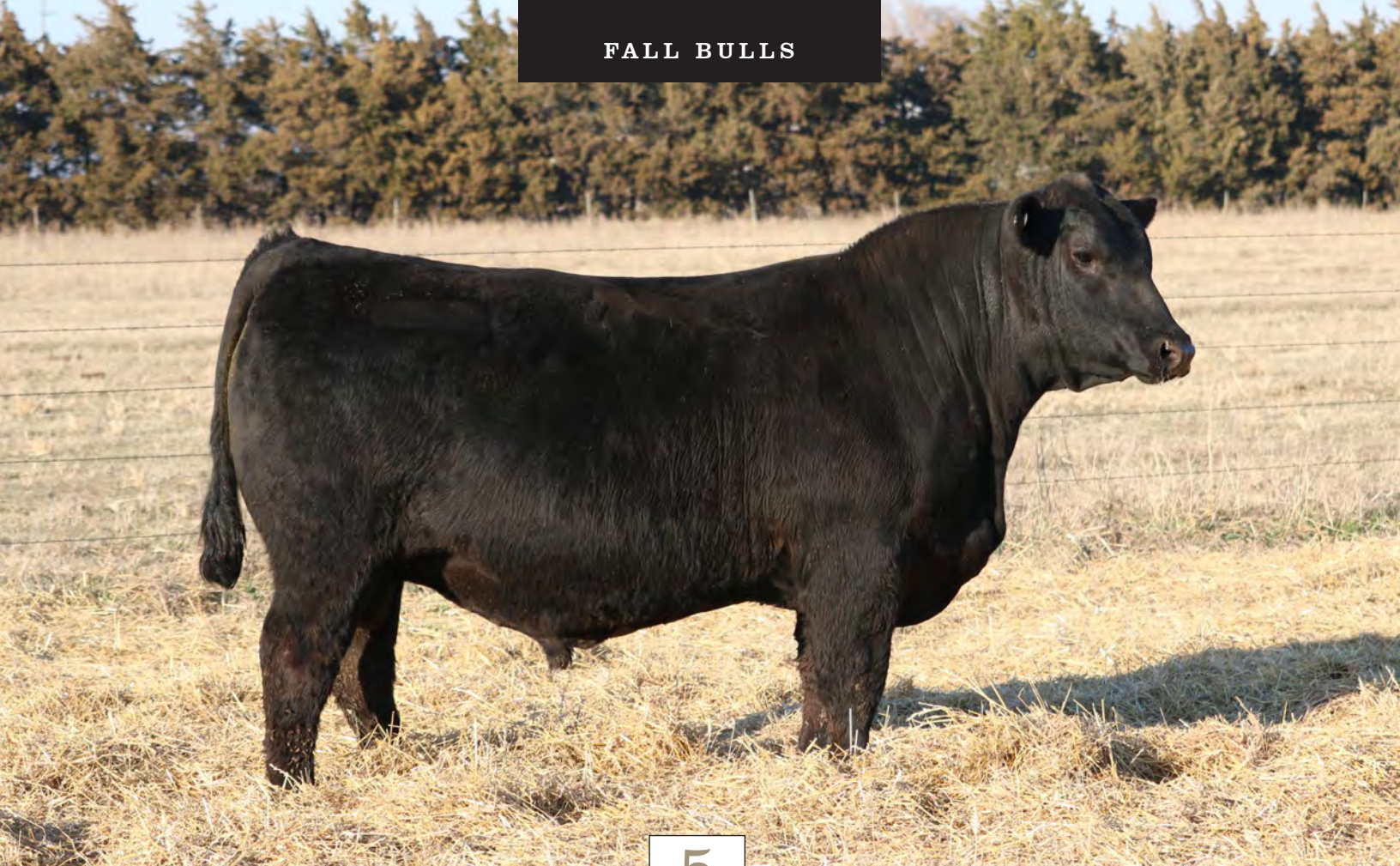
If there was an EPD for eye appeal (maybe someday) he would rank up in the top 1%.
Safe for use on heifers, but not so light on BW that the calves will blow away in the Nebraska wind.
So far, mamma Marianne has produced 2 calves with a WR @ 103.



maternal grandsire **QUAKER HILL MANNING**



dam as a yearling **BRUNING MARIANNE 1739**



5

BRUNING RESILIENT 6182

REGISTRATION NO.: 20892418 • DATE OF BIRTH: 09/07/22 • TATTOO: 6182

Mohnen Substantial 272 ————— Sitz Stellar 726D TMG D18 of B17 BLACK GRANITE — Connealy Black Granite
 SITZ Pride 200B —————
 SITZ RESILIENT 10208 BRUNING ANNA 1999 TMG B17 of 127S Anticipation
 Sitz Top Game 561X ————— Sitz Miss Burgess 1856 LD Blackcap 6362 ————— G A R Sure Fire 7374
 Sitz Miss Burgess 4381 ————— LD Blackcap 3462

ADJ. BW 66 • ADJ. WW 732 • SCROTAL 40 • %IMF 3.26* • REA 15.1* • RIBFAT .38*

CED	BW	WW	YW	MILK	MARB	RE	\$M	\$W	\$F	\$B	\$C
+13	-.6	+65	+117	+32	+98	+51	+70	+72	+83	+148	+262
TOP 10%	TOP 15%			TOP 15%	TOP 25%			TOP 20%			

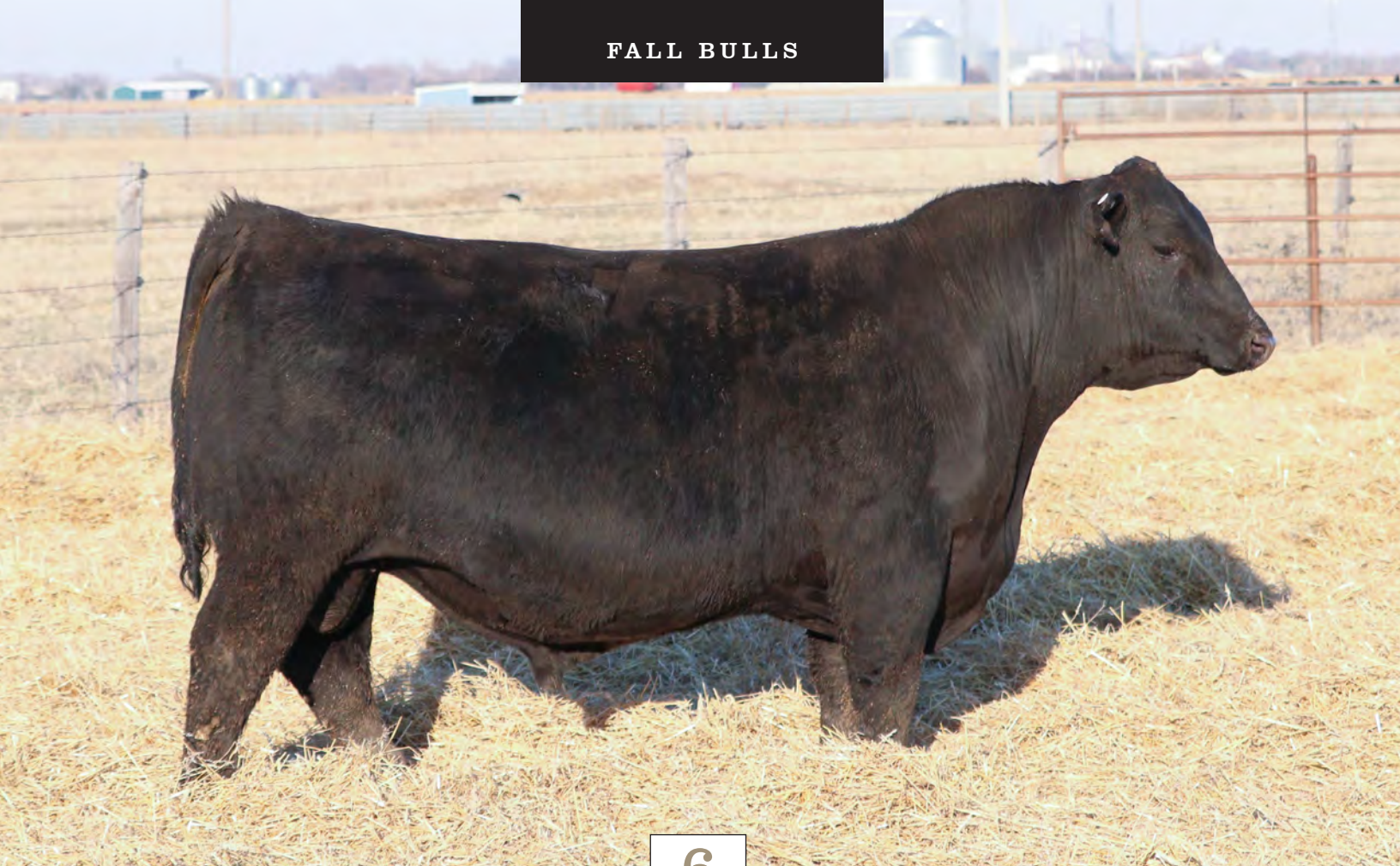
Heifer safe, muscled up, and marbled. Simply put, 6182 is the cow herd building kind. He holds the biggest adjusted weaning weight in this years fall bulls backed by generations of reliable cow families. Also likely to rank in the top 1% for the eye appeal EPD.



paternal grandsire **SITZ STELLAR**



sire **SITZ RESILIENT**



6

BRUNING RESILIENT 6252

REGISTRATION NO.: 20891118 • DATE OF BIRTH: 09/09/22 • TATTOO: 6252

Mohnen Substantial 272 ————— *Sitz Stellar 726D* *V A R Discovery 2240* ————— *A A R Ten X 7008 S A*
SITZ Pride 200B —————
Sitz Top Game 561X ————— *Sitz Miss Burgess 1856* *TMG Z34 of 919 PIONEER* ————— *SA V Pioneer 7301*
Sitz Miss Burgess 4381 —————
SITZ RESILIENT 10208 **TMG C27 OF Z34 DISCOVERY** *E&B Lady 1023 Precision 919*

ADJ. BW 69 • ADJ. WW 661 • SCROTAL 41.5 • %IMF 2.42* • REA 14.2* • RIBFAT .21*

CED	BW	WW	YW	MILK	MARB	RE	\$M	\$W	\$F	\$B	\$C
+9	-.5	+71	+120	+31	+.49	+.56	+91	+79	+73	+115	+240
TOP 30%	TOP 20%	TOP 30%		TOP 20%			TOP 3%	TOP 10%			

Lot 10 is a natural calf out of a go-to donor, C27. Shes one of our older proven donors with a track record is as impressive on paper as her calves are on foot. 5 natural calves ratio BR @ 97, WR @ 109, YR @ 101, IMF @ 109, REA @ 102, BFat @ 90.



sire **SITZ RESILIENT**



maternal grandsire **V A R DISCOVERY**

7

BRUNING PLUS ONE 6242

REGISTRATION NO.: 20891114 • DATE OF BIRTH: 09/08/22 • TATTOO: 6242

Connealy Confidence 0100
Elbanna of Conanga 1209

Connealy Confidence Plus

G A R Sunrise

MCC Daybreak
G A R Objective R227**E&B PLUS ONE****GOODE SUNRISE 8356**E&B 1680 Precision 1023
E&B Lady 878 New Design 441

E&B Lady 1023 Precision 936

G A R Momentum 2314

G A R Momentum
G A R 28 Ambush 3162

ADJ. BW 73 • ADJ. WW 674 • SCROTAL 42 • %IMF 4.76* • REA 14.4* • RIBFAT .21*

CED	BW	WW	YW	MILK	MARB	RE	\$M	\$W	\$F	\$B	\$C
+4	+2.0	+73 TOP 25%	+126 TOP 30%	+25	+82	+1.02 TOP 10%	+65	+68 TOP 25%	+108 TOP 15%	+178 TOP 15%	+296 TOP 15%

8

BRUNING ENHANCE 209G 6652

REGISTRATION NO.: 20891119 • DATE OF BIRTH: 09/29/22 • TATTOO: 6652

SydGen Exceed 3223
SydGen Rita 2618

SydGen Enhance

Plattemere Weigh Up K360

Sitz Upward 307R
Barbara of Plattemere 337**G A R ENHANCE 209G****BRUNING WILHELMINA 6079**G A R Momentum
G A R Daybreak N542

Ogeechee Momentum 664

Bruning Sentry 1266

PA Power Tool 9108
Bruning Sentry 5831

ADJ. BW 77 • ADJ. WW 680 • SCROTAL 41 • %IMF 5.09* • REA 14.4* • RIBFAT .30*

CED	BW	WW	YW	MILK	MARB	RE	\$M	\$W	\$F	\$B	\$C
+9 TOP 30%	+0 TOP 25%	+68	+127 TOP 25%	+32 TOP 15%	+1.43 TOP 4%	+69	+57	+70 TOP 20%	+101 TOP 25%	+196 TOP 10%	+311 TOP 10%

9

BRUNING ENHANCE 209G 6562

REGISTRATION NO.: 20891115 • DATE OF BIRTH: 09/25/22 • TATTOO: 6562

SydGen Exceed 3223
SydGen Rita 2618

SydGen Enhance

Basin Yuma 4286

EXAR Denver 2002B
Basin Lucy 1022**G A R ENHANCE 209G****TMG E08 OF C27 YUMA**G A R Momentum
G A R Daybreak N542

Ogeechee Momentum 664

TMG C27 of Z34 DISCOVERY

V A R Discovery 2240
TMG Z34 of 919 PIONEER

ADJ. BW 64 • ADJ. WW 666 • SCROTAL 40 • %IMF 3.44* • REA 15.5* • RIBFAT .30*

CED	BW	WW	YW	MILK	MARB	RE	\$M	\$W	\$F	\$B	\$C
+8	+5	+60	+115	+41 TOP 1%	+1.26 TOP 10%	+98 TOP 10%	+34	+64	+98 TOP 30%	+190 TOP 10%	+280 TOP 25%

10

BRUNING ENHANCE 209G 6752

REGISTRATION NO.: 20891113 • DATE OF BIRTH: 10/02/22 • TATTOO: 6752

SydGen Exceed 3223 ————— *SydGen Enhance* *Sitz Investment 660Z* ————— *Connealy Final Product*
SydGen Rita 2618 ————— *Sitz Ellunas Elite 656T*
G A R ENHANCE 209G **LD FOREVER LADY 6318**
G A R Momentum ————— *Ogeechee Momentum 664* *LD Forever Lady 3118* ————— *Hoover Dam*
G A R Daybreak N542 ————— *LD Forever Lady 8118*

ADJ. BW 82 • ADJ. WW 641 • SCROTAL 38 • %IMF 3.53* • REA 13.6* • RIBFAT .24*

CED	BW	WW	YW	MILK	MARB	RE	\$M	\$W	\$F	\$B	\$C
+4	+2.2	+77 TOP 15%	+136 TOP 15%	+22	+81	+85 TOP 25%	+51	+63	+95	+160 TOP 30%	+259



YEARLING BULLS



11

BRUNING JAMESON 1213

REGISTRATION NO.: 20890929 • DATE OF BIRTH: 02/09/23 • TATTOO: 1213

Basin Advance 3134 ————— *Basin Deposit 6249* *E&B Plus One* ————— *Connealy Confidence Plus*
Basin Lucy 4288 ————— *Basin Joy 9140* *E&B Lady 1023 Precision 936*
BASIN JAMESON 1076 **BRUNING MARIANNE 640**
EXAR Monumental 6056B ————— *Basin Joy 9140* *TMG B13 of 127S Prophet* ————— *G A R Prophet*
Basin Joy 5367 ————— *Basin Joy 9140* *TMG B13 of 127S Prophet* ————— *SQ Lady 61 127S*

ADJ. BW 77 • ADJ. WW 655 • SCROTAL 37 • %IMF 6.32 • REA 13.2 • RIBFAT .21

CED	BW	WW	YW	MILK	MARB	RE	\$M	\$W	\$F	\$B	\$C
+9	+1	+82	+148	+39	+1.68	+86	+84	+90	+115	+221	+371
TOP 30%	TOP 25%	TOP 10%	TOP 10%	TOP 2%	TOP 1%	TOP 25%	TOP 10%	TOP 1%	TOP 10%	TOP 2%	TOP 1%

This is one of the earliest and biggest offerings of Basin Jameson sons. Lot 11 has 23 EPDs that average top 15%+ in the breed and scanned his socks off with the highest IMF @ 166 and a REA @ 101. We love his young donor dam already scoring 2 IMF @ 135... But wait, theres more! All that growth and he's still safe for breeding heifers.



paternal granddam **BASIN JOY 9140**



sire **BASIN JAMESON**



12

BRUNING JAMESON 953

REGISTRATION NO.: 20890921 • DATE OF BIRTH: 02/03/23 • TATTOO: 953

Basin Advance 3134 ————— *Basin Deposit 6249* *BUBS Southern Charm AA31* ————— *Silveiras Conversion 8064*
Basin Lucy 4288 ————— *Basin Joy 9140* *BUBS CHARLOTTE 9F* ————— *Hickory Hill Erica 009*
BASIN JAMESON 1076 **BUBS CHARLOTTE 9F**
EXAR Monumental 6056B ————— *Basin Joy 9140* *FF Rita 6E16 of N1029 3710B* ————— *EXAR Resistol 3710B*
Basin Joy 5367 ————— *Basin Joy 9140* *FF Rita 6E16 of N1029 3710B* ————— *G A R Predestined N1029*

ADJ. BW 92 • ADJ. WW 674 • SCROTAL 37.5 • %IMF 3.39 • REA 13.6 • RIBFAT .24

CED	BW	WW	YW	MILK	MARB	RE	\$M	\$W	\$F	\$B	\$C
+9	+1.5	+85	+140	+34	+99	+1.00	+81	+89	+106	+184	+320
TOP 30%		TOP 5%	TOP 15%	TOP 10%	TOP 20%	TOP 10%	TOP 10%	TOP 1%	TOP 20%	TOP 15%	TOP 10%

A no-brainer mating for Jameson with the donor that keeps donating incredible offspring. Certainly a unique pedigree for many that have yet to experience Southern Charm and all of his perks.

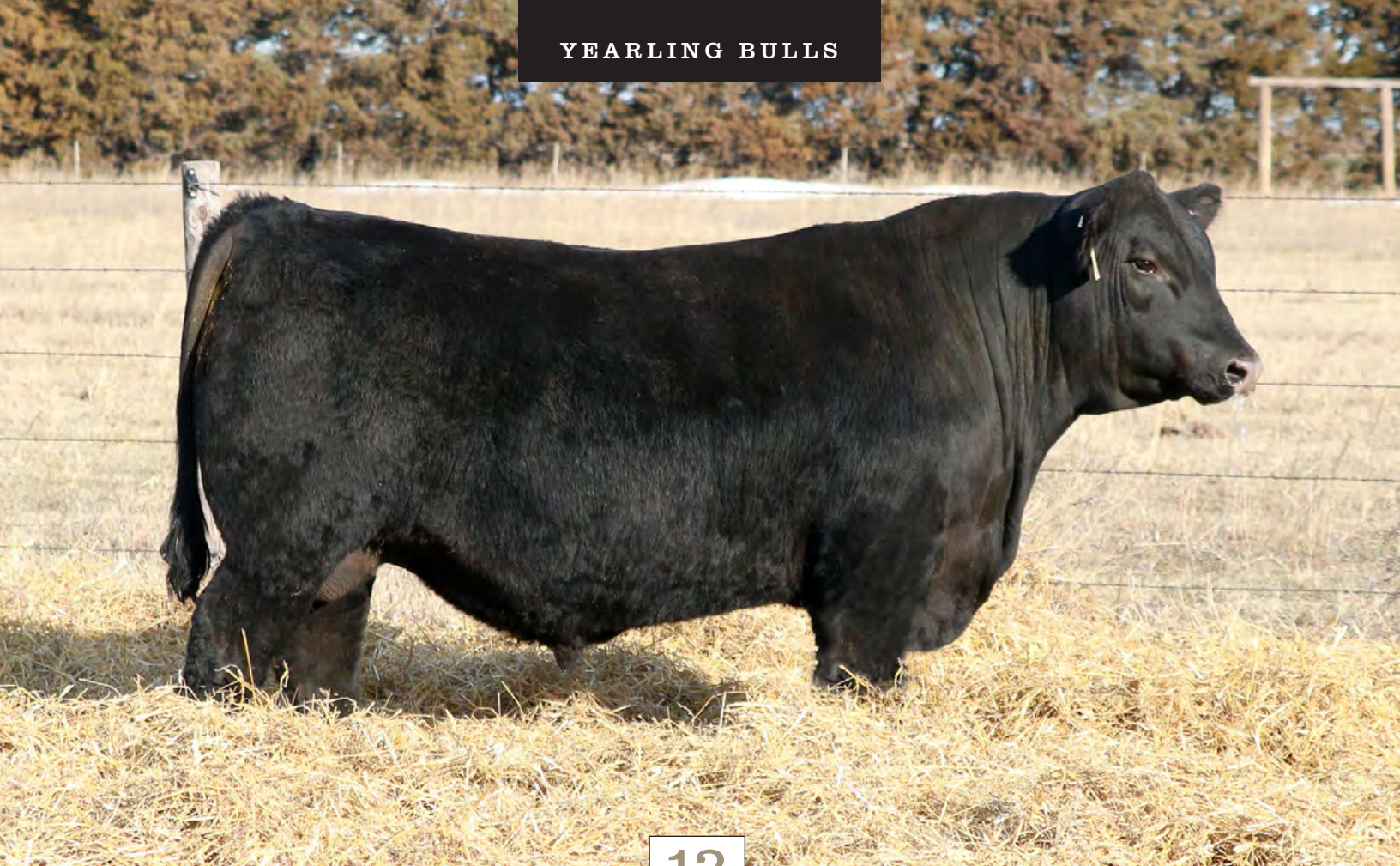
Dam, 9F produced Monumental 180, the high seller on our 2021 sale.



dam as a yearling **BUBS CHARLOTTE 9F**



maternal sib **BRUNING MONUMENTAL 180**



13

BRUNING JAMESON 1043

REGISTRATION NO.: 20890924 • DATE OF BIRTH: 02/05/23 • TATTOO: 1043

Basin Advance 3134 ————— Basin Deposit 6249 Connealy Thunder ————— Baldrige Kaboom K243 KCF
 Basin Lucy 4288
BASIN JAMESON 1076 BRUNING YOUNG LUCY 15
 EXAR Monumental 6056B ————— Basin Joy 9140 Bruning Young Lucy 403 ————— Barstow Final Answer W73
 Basin Joy 5367 ————— B F New Design 276

ADJ. BW 70 • ADJ. WW 729 • SCROTAL 39 • %IMF 3.61 • REA 12.7 • RIBFAT .20

CED	BW	WW	YW	MILK	MARB	RE	\$M	\$W	\$F	\$B	\$C
+7	+5	+85 TOP 5%	+138 TOP 15%	+30 TOP 25%	+1.07 TOP 15%	+88 TOP 20%	+76 TOP 20%	+85 TOP 2%	+98 TOP 30%	+179 TOP 15%	+308 TOP 10%

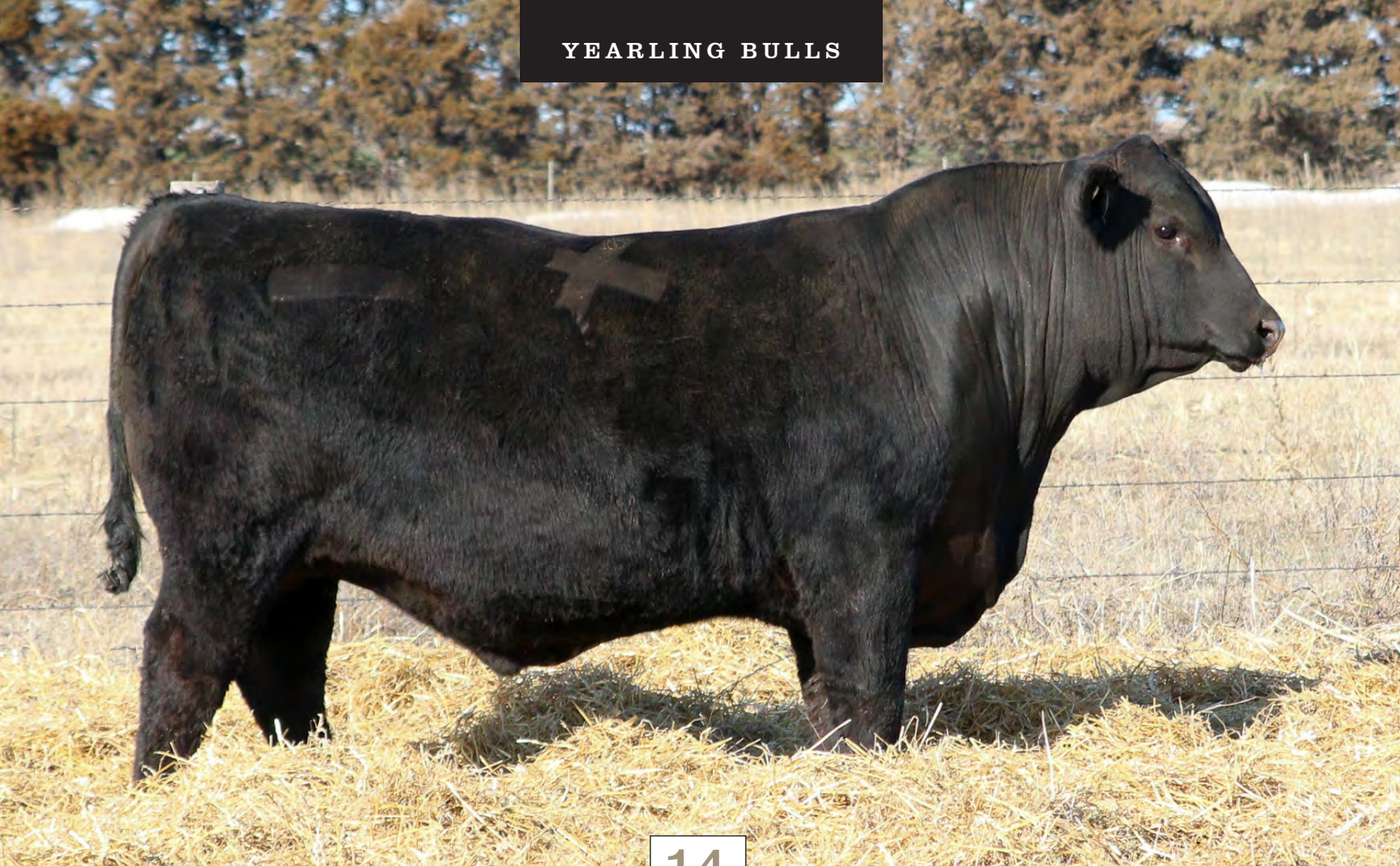
When Lot 13 was born, the Weather Channel issued a perfect storm warning as a result of a Jameson x Connealy Thunder mating. He boomed to a 814 lbs at weaning, and his adjusted weaning weight ratio landed at 116. Young Lucy 15's individual performance records; BR @ 96, WR @ 117, YR @ 109, REA @ 101 in addition to her expanding calf performance ratios of 5 BR @ 95, WR @ 113, YR @ 106, REA @ 12.



maternal sibling **BRUNING METHOD 1641**



maternal grandsire **CONNELY THUNDER**



14

BRUNING JAMESON 1123

REGISTRATION NO.: 20892420 • DATE OF BIRTH: 02/06/23 • TATTOO: 1123

Basin Advance 3134 ————— *Basin Deposit 6249* *Poss Maverick* ————— *Basin Payweight 1682*
Basin Lucy 4288 ————— *Basin Joy 9140* *Poss Pride 5163*
BASIN JAMESON 1076 **BRUNING MARIANNE 1231**
EXAR Monumental 6056B ————— *Basin Joy 9140* *Legacy C80 L626* ————— *G A R Prophet*
Basin Joy 5367 ————— *Basin Joy 9140* *Legacy C80 L626* ————— *G A R Daybreak C80*

ADJ. BW 73 • ADJ. WW 694 • SCROTAL 38 • %IMF 4.65 • REA 11.6 • RIBFAT .36

CED	BW	WW	YW	MILK	MARB	RE	\$M	\$W	\$F	\$B	\$C
+6	+3.0	+105 TOP 1%	+184 TOP 1%	+34 TOP 10%	+1.14 TOP 15%	+0.54	+53	+91 TOP 1%	+127 TOP 3%	+202 TOP 5%	+315 TOP 10%

You would have to drive the wheels off of 2 Chevy trucks or 10 Fords (whichever you prefer) to find a bull with this much growth and pedigree that pops like Jameson 1123's. Along with his incredible EPD rankings above, check these out; top 2% RADG, 20% Claw, 10% Angle, 1% CW, 15% \$G. He's got dimension for days, its hard to capture in a picture.



paternal grandsire **BASIN DEPOSIT**



maternal grandsire **POSS MAVERICK**

YEARLING BULLS



17

BRUNING CONCLUSION 443

REGISTRATION NO.: 20890909 • DATE OF BIRTH: 01/29/23 • TATTOO: 443

*K C F Bennett Consent Y75
Thomas Patricia 9705*

K C F Bennett Summation

Hoover No Doubt

*Mogck Bullseye
Miss Blackcap Ellston J2*

V A R CONCLUSION 0234

BEAR MTN ENCHANTRESS 9621

*Connealy Onward
Riverbend Blackbird 4301*

Sandpoint Blackbird 8809

Bear Mtn Enchantress 6557

*Bear Mtn Titan 4045
Bear Mtn Enchantress 1005*

ADJ. BW 71 • ADJ. WW 617 • SCROTAL 32.5 • %IMF 3.62 • REA 14.5 • RIBFAT .26

CED	BW	WW	YW	MILK	MARB	RE	\$M	\$W	\$F	\$B	\$C
+8	+7	+86 TOP 5%	+152 TOP 4%	+12	+1.12 TOP 15%	+1.04 TOP 10%	+48	+65	+104 TOP 20%	+186 TOP 10%	+289 TOP 20%

Conclusion sons consistently boast big time growth and attractive phenotype. Lot 17 also ranks 9 EPDs in the top 15%+. Product of a No Doubt daughter, this family tree is loaded. A longer spine on him and he earned an REA @ 111 amongst his peers here.

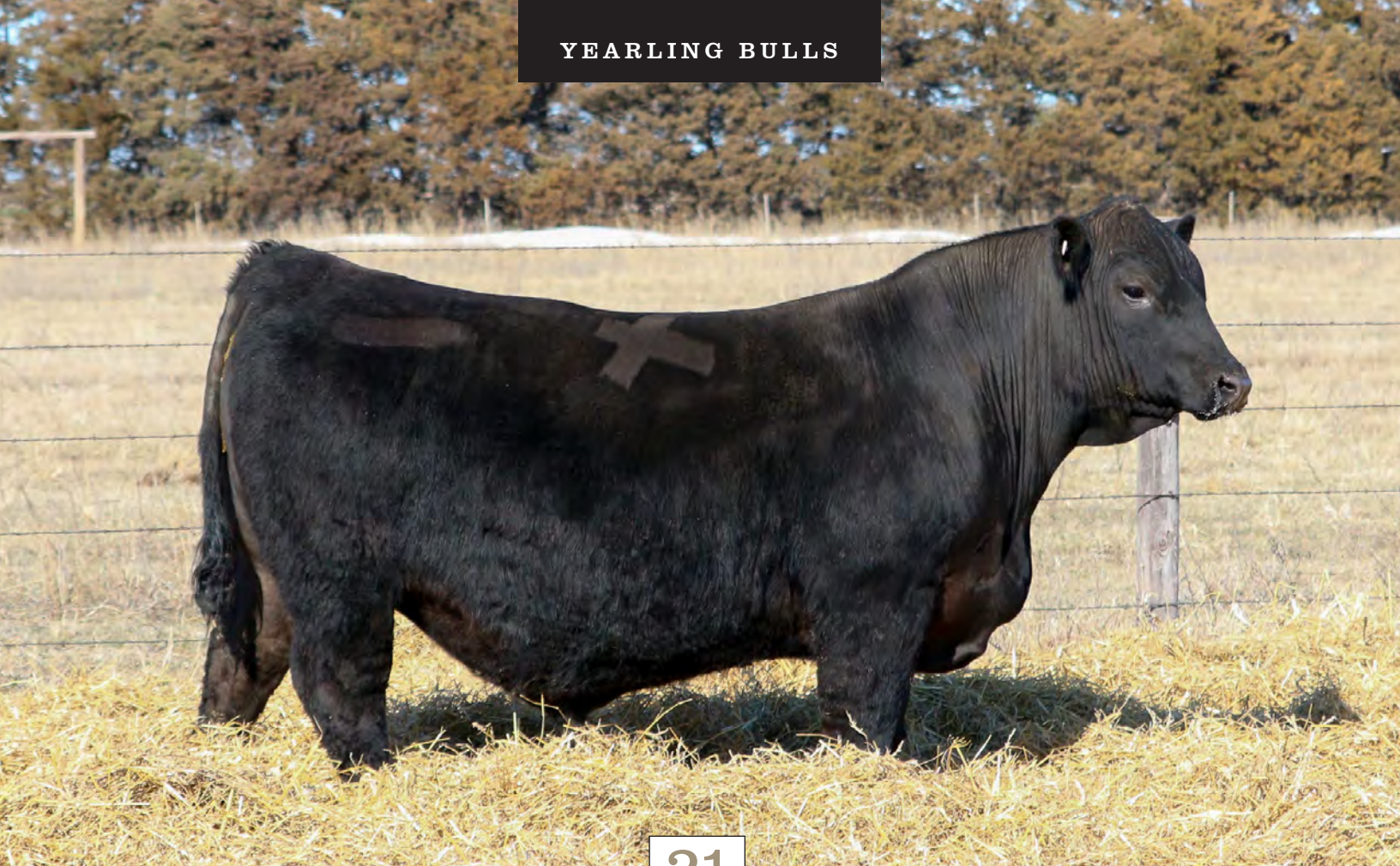


pat granddam SANDPOINT BLACKBIRD 8809



maternal grandsire HOOVER NO DOUBT

YEARLING BULLS



21

BRUNING CONCLUSION 143

REGISTRATION NO.: 20890903 • DATE OF BIRTH: 01/24/23 • TATTOO: 143

K C F Bennett Consent Y75 ————— *K C F Bennett Summation* *Basin Yuma 4286* ————— *EXAR Denver 2002B*
Thomas Patricia 9705 —————
V A R CONCLUSION 0234 **BRUNING WILHELMINA 139**
Connealy Onward ————— *Sandpoint Blackbird 8809* *LD Blackcap 6825* ————— *G A R Sure Fire*
Riverbend Blackbird 4301 —————

ADJ. BW 81 • ADJ. WW 668 • SCROTAL 42 • %IMF 2.94 • REA 13.3 • RIBFAT .30

CED	BW	WW	YW	MILK	MARB	RE	\$M	\$W	\$F	\$B	\$C
+11	+1.2	+83	+154	+38	+88	+80	+53	+82	+109	+177	+283
TOP 15%		TOP 10%	TOP 3%	TOP 3%	TOP 30%	TOP 30%		TOP 3%	TOP 15%	TOP 15%	TOP 25%

This bull looks like he inherited a perfect 50% from his sire, Conclusion and MGS, Yuma. We are still fond of our Yuma cattle and heres one of the latest reasons why. 11 EPDs top 15%+ including the SC EPD verified by his 42cm swinger. Ratios include WR @ 107 and REA @ 102. Dam has produced 3 WR @105 and REA @ 102.



paternal granddam **KCF BENNETT SUMMATION**



maternal grandsire **BASIN YUMA**

22

BRUNING DEPOSIT 773

REGISTRATION NO.: 20890919 • DATE OF BIRTH: 02/01/23 • TATTOO: 773

G A R Progress Basin O Lass 1663 Basin Advance 3134 E&B Plus One Connealy Confidence Plus E&B Lady 1023 Precision 936

BASIN DEPOSIT 6249 BRUNING MARIANNE 320

EXAR Denver 2002B Basin Lucy 1037 Basin Lucy 4288 Bruning Marianne 287 G A R Momentum B F Miss Bingo Fin Ans 572

ADJ. BW 70 • ADJ. WW 663 • SCROTAL 37.5 • %IMF 3.86 • REA 13.6 • RIBFAT .20

Table with 12 columns: CED, BW, WW, YW, MILK, MARB, RE, \$M, \$W, \$F, \$B, \$C. Values include +4, +2.9, +82, +139, +24, +1.24, +.67, +71, +72, +100, +183, +308.

23

BRUNING JAMESON 593

REGISTRATION NO.: 20890912 • DATE OF BIRTH: 01/30/23 • TATTOO: 593

Basin Advance 3134 Basin Lucy 4288 Basin Deposit 6249 V A R Discovery 2240 A A R Ten X 7008 S A Deer Valley Rita 0308

BASIN JAMESON 1076 TMG LUCY E23

EXAR Monumental 6056B Basin Joy 5367 Basin Joy 9140 Basin Lucy 1022 Gardens Wave Basin Lucy 262S

ADJ. BW 78 • ADJ. WW 615 • SCROTAL 37.5 • %IMF 5.57 • REA 12.9 • RIBFAT .42

Table with 12 columns: CED, BW, WW, YW, MILK, MARB, RE, \$M, \$W, \$F, \$B, \$C. Values include +8, +1.0, +78, +132, +26, +1.53, +.32, +87, +79, +88, +178, +318.

24

BRUNING QUANTUM 1533

REGISTRATION NO.: 20892419 • DATE OF BIRTH: 02/16/23 • TATTOO: 1533

G A R Momentum G A R In Sure 1524 G A R Quantum Poss Maverick Basin Payweight 1682 Poss Pride 5163

G A R QUANTUM W700 BRUNING MARIANNE 1231

G A R Prophet Chair Rock 5050 G A R 1072 Chair Rock Prophet 5112 Legacy C80 L626 G A R Prophet G A R Daybreak C80

ADJ. BW 66 • ADJ. WW 624 • SCROTAL 35 • %IMF 5.05 • REA 13.3 • RIBFAT .28

Table with 12 columns: CED, BW, WW, YW, MILK, MARB, RE, \$M, \$W, \$F, \$B, \$C. Values include +9, +2.3, +82, +139, +33, +1.22, +.81, +72, +83, +88, +171, +294.

25

BRUNING PLUS ONE 33

REGISTRATION NO.: 20890986 • DATE OF BIRTH: 01/17/23 • TATTOO: 33

Connealy Confidence 0100 ————— *Connealy Confidence Plus* *G A R Home Town* ————— *G A R Ashland*
Elbanna of Conanga 1209 ————— *E&B PLUS ONE* **BRUNING HOME TOWN 591** *Chair Rock Sure Fire 6095*
E&B 1680 Precision 1023 ————— *E&B Lady 1023 Precision 936* *G A R Prophet R155* ————— *G A R Prophet*
E&B Lady 878 New Design 441 ————— *E&B Lady 1023 Precision 936* *G A R Prophet R155* ————— *G A R Daybreak 372*

ADJ. BW 63 • ADJ. WW 639 • SCROTAL 38 • %IMF 4.14 • REA 11.9 • RIBFAT .31

CED	BW	WW	YW	MILK	MARB	RE	\$M	\$W	\$F	\$B	\$C
+9	+.3	+80	+137	+19	+1.23	+.83	+60	+75	+101	+185	+300
TOP 30%	TOP 30%	TOP 10%	TOP 15%		TOP 10%	TOP 25%		TOP 15%	TOP 25%	TOP 10%	TOP 15%

26

BRUNING JAMESON 1073

REGISTRATION NO.: 20890944 • DATE OF BIRTH: 02/05/23 • TATTOO: 1073

Basin Advance 3134 ————— *Basin Deposit 6249* *V A R Discovery 2240* ————— *A A R Ten X 7008 S A*
Basin Lucy 4288 ————— **BASIN JAMESON 1076** **TMG LUCY E23** *Deer Valley Rita 0308*
EXAR Monumental 6056B ————— *Basin Joy 9140* *Basin Lucy 1022* ————— *Gardens Wave*
Basin Joy 5367 ————— *Basin Joy 9140* *Basin Lucy 1022* ————— *Basin Lucy 262S*

ADJ. BW 71 • ADJ. WW 524 • SCROTAL 39.5 • %IMF 3.62 • REA 13.2 • RIBFAT .24

CED	BW	WW	YW	MILK	MARB	RE	\$M	\$W	\$F	\$B	\$C
+5	+1.4	+88	+144	+28	+1.13	+.71	+58	+84	+92	+169	+277
		TOP 3%	TOP 10%		TOP 15%			TOP 2%		TOP 20%	TOP 25%

27

BRUNING CONCLUSION 693

REGISTRATION NO.: 20890917 • DATE OF BIRTH: 01/31/23 • TATTOO: 693

K C F Bennett Consent Y75 ————— *K C F Bennett Summation* *Connealy Thunder* ————— *Baldrige Kaboom K243 KCF*
Thomas Patricia 9705 ————— **V A R CONCLUSION 0234** **BRUNING YOUNG LUCY 15** *Parka of Conanga 241*
Connealy Onward ————— *Sandpoint Blackbird 8809* *Bruning Young Lucy 403* ————— *Barstow Final Answer W73*
Riverbend Blackbird 4301 ————— *Sandpoint Blackbird 8809* *Bruning Young Lucy 403* ————— *B F New Design 276*

ADJ. BW 76 • ADJ. WW 615 • SCROTAL 36 • %IMF 3.25 • REA 12.8 • RIBFAT .26

CED	BW	WW	YW	MILK	MARB	RE	\$M	\$W	\$F	\$B	\$C
+6	+1.9	+80	+142	+25	+.74	+.86	+76	+74	+95	+156	+278
		TOP 10%	TOP 10%			TOP 25%	TOP 20%	TOP 15%			TOP 25%

30

SPEC WHITLOCK 3020

REGISTRATION NO.: 20768554 • DATE OF BIRTH: 02/17/23 • TATTOO: 3020

S Chisum 6175 ————— *S Whitlock 179* *Vin-Mar Johnny Cash 3513* ————— *Barstow Cash*
S Pride Anna 709 —————

BRUNING SPEC WHITLOCK 1018 **SPEC BARBARA CASH 114**

Connealy Consensus 7229 ————— *B & D Barbara 248* *B & D Barbara 248* ————— *Connealy Consensus 7229*
Barbara of Plattermere 337 —————

ADJ. BW 65 • ADJ. WW 679 • SCROTAL 34 • %IMF 2.84 • REA 12.2 • RIBFAT .24

CED	BW	WW	YW	MILK	MARB	RE	\$M	\$W	\$F	\$B	\$C
+13	+3	+75	+137	+26	+80	+78	+58	+70	+118	+179	+290
TOP 10%	TOP 30%	TOP 20%	TOP 15%		TOP 35%	TOP 30%		TOP 20%	TOP 10%	TOP 15%	TOP 20%

31

BRUNING CONCLUSION 1633

REGISTRATION NO.: 20890937 • DATE OF BIRTH: 02/19/23 • TATTOO: 1633

K C F Bennett Consent Y75 ————— *K C F Bennett Summation* *G A R Sunrise* ————— *MCC Daybreak*
Thomas Patricia 9705 —————

V A R CONCLUSION 0234 **BRUNING HELENA 967**

Connealy Onward ————— *Sandpoint Blackbird 8809* *Bruning Rainmaker 634* ————— *K C F Bennett True Value*
Riverbend Blackbird 4301 ————— *B F Occ Helmsman Adv 1120*

ADJ. BW 78 • ADJ. WW 657 • SCROTAL 38 • %IMF 2.65 • REA 13 • RIBFAT .26

CED	BW	WW	YW	MILK	MARB	RE	\$M	\$W	\$F	\$B	\$C
+12	+7	+85	+148	+29	+70	+82	+64	+81	+95	+156	+266
TOP 10%		TOP 5%	TOP 10%	TOP 30%		TOP 25%		TOP 4%			

32

BRUNING QUANTUM 903

REGISTRATION NO.: 20891433 • DATE OF BIRTH: 02/03/23 • TATTOO: 903

G A R Progress ————— *G A R Momentum* *G A R Prophet* ————— *C R A Bextor 872 5205 608*
G A R Big Eye 1770 —————

G A R QUANTUM **GOODE PROPHET 7834**

Connealy In Sure 8524 ————— *G A R In Sure 1524* *Goode Progress 4161* ————— *G A R Progress*
G A R Complete 3011 ————— *Goode 28 Ambush 1311*

ADJ. BW 73 • ADJ. WW 615 • %IMF 4.64 • REA 11.2 • RIBFAT .20

CED	BW	WW	YW	MILK	MARB	RE	\$M	\$W	\$F	\$B	\$C
+7	+1.0	+73	+128	+25	+1.34	+76	+47	+67	+89	+178	+278
		TOP 25%	TOP 25%		TOP 10%			TOP 30%		TOP 15%	TOP 25%



34

BRUNING INCENTIVE 1333

REGISTRATION NO.: 20890930 • DATE OF BIRTH: 02/13/23 • TATTOO: 1333

Mohnen Substantial 272 ————— *Sitz Stellar 726D* *G A R Sure Fire 7374* ————— *G A R Sure Fire*
SITZ Pride 200B ————— *SITZ INCENTIVE 704H* *LD BLACKCAP 6722* ————— *G A R Prophet 992*
Sitz Invasion 574D ————— *SITZ Barbaramere Nell 53F* *LD Blackcap 3722* ————— *PF 6em3 643T 1061*
SITZ Barbaramere Nell 105D ————— *LD Blackcap 0022*

ADJ. BW 62 • ADJ. WW 707 • SCROTAL 34 • %IMF 3.50 • REA 12.5 • RIBFAT .36

CED	BW	WW	YW	MILK	MARB	RE	\$M	\$W	\$F	\$B	\$C
+13	-1.8	+72	+127	+33	+0.83	+0.51	+84	+79	+101	+157	+288
TOP 10%	TOP 5%	TOP 25%	TOP 25%	TOP 15%			TOP 10%	TOP 10%	TOP 25%		TOP 20%

Holy Sitz, look at this bull! Deep sided, long and correct, certainly a unique pedigree. Well balanced EPD profile backed by individual performance ratios of; BR @ 86, WR @ 113, Scan Wt @ 105. Dam, Blackcap 6722 has recorded 4 calves average BR @ 88 and WR @ 107.

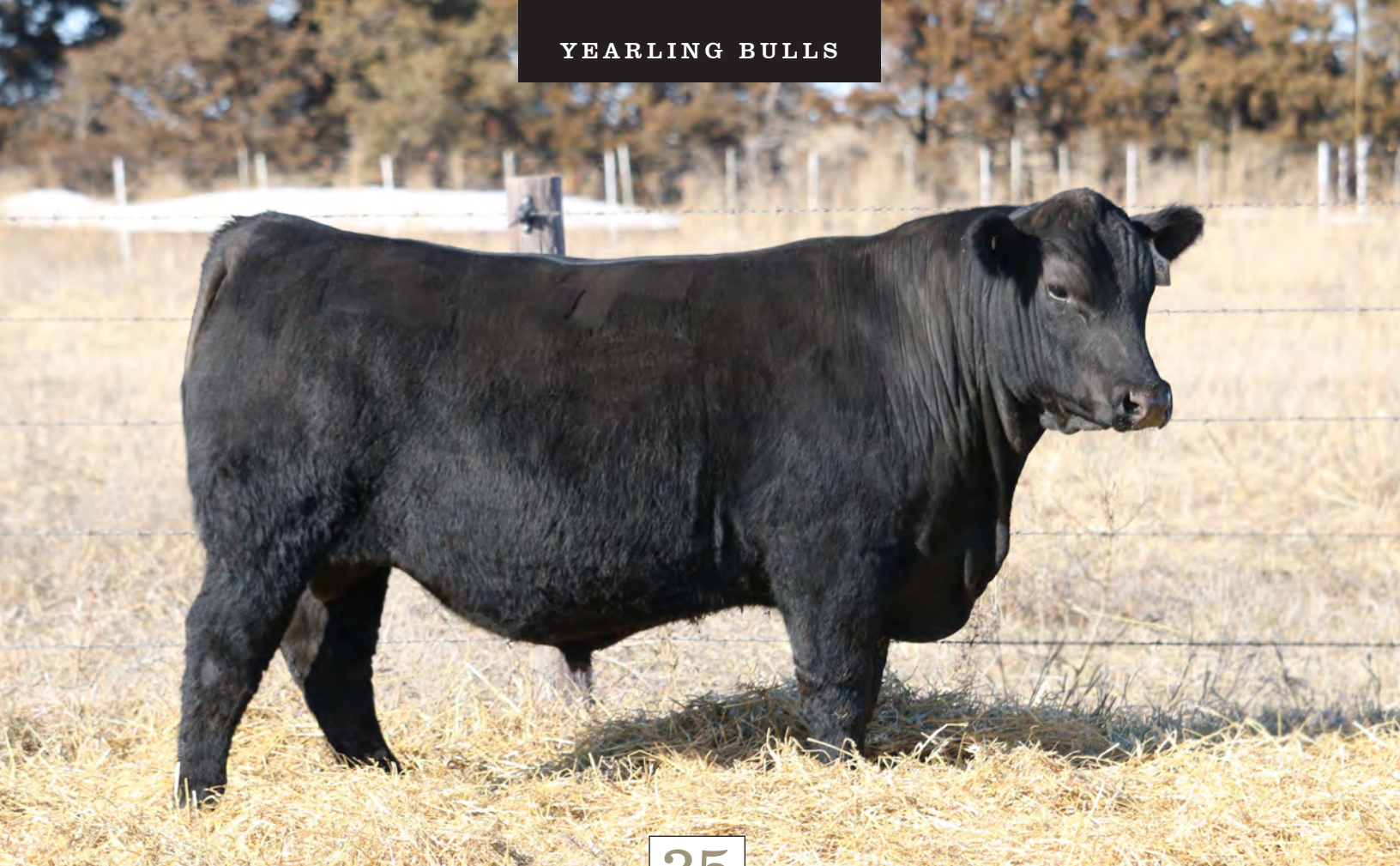


sire **SITZ INCENTIVE**



maternal grandsires sire **G A R SURE FIRE**

YEARLING BULLS



35

BRUNING INCENTIVE 303

REGISTRATION NO.: 20890907 • DATE OF BIRTH: 01/26/23 • TATTOO: 303

Mohnen Substantial 272 ————— *Sitz Stellar 726D* *E&B Plus One* ————— *Connealy Confidence Plus*
SITZ Pride 200B ————— *SITZ INCENTIVE 704H* *BRUNING MARIANNE 640* *E&B Lady 1023 Precision 936*
Sitz Invasion 574D ————— *SITZ Barbaramere Nell 53F* *TMG B13 of 127S Prophet* ————— *G A R Prophet*
SITZ Barbaramere Nell 105D ————— *SQ Lady 61 127S*

ADJ. BW 73 • ADJ. WW 606 • SCROTAL 41 • %IMF 3.92 • REA 12.8 • RIBFAT .38

CED	BW	WW	YW	MILK	MARB	RE	\$M	\$W	\$F	\$B	\$C
+10 TOP 20%	-1.4 TOP 10%	+64	+112	+29 TOP 30%	+0.82	+0.36	+113 TOP 1%	+76 TOP 10%	+87	+140	+295 TOP 15%

10 total EPDs in the top 15%+ for this maternal sibling to the leadoff yearling bull, Lot 11. BR @ 99, WR @ 102 and an IMF @ 103, 41cm scrotal, and perfect feet. Claw and Angle feet EPDs are the top 1% and 2% respectively. Dam Marianne 640's individuals; BR @ 94, IMF @ 117, REA @ 118, BFat @ 88.



paternal grandsires sire **MOHNEN SUBSTANTIAL**



paternal granddams sire **SITZ INVASION**

36

BRUNING JAMESON 683

REGISTRATION NO.: 20890916 • DATE OF BIRTH: 01/31/23 • TATTOO: 683

Basin Advance 3134 ————— *Basin Deposit 6249* *Connealy Thunder* ————— *Baldrige Kaboom K243 KCF*
Basin Lucy 4288

BASIN JAMESON 1076 **BRUNING YOUNG LUCY 15**

EXAR Monumental 6056B ————— *Basin Joy 9140* *Bruning Young Lucy 403* ————— *Barstow Final Answer W73*
Basin Joy 5367

Parka of Conanga 241
B F New Design 276

ADJ. BW 70 • ADJ. WW 679 • SCROTAL 41.5 • %IMF 3.25 • REA 12.3 • RIBFAT .27

CED	BW	WW	YW	MILK	MARB	RE	\$M	\$W	\$F	\$B	\$C
+15	-1.3	+80	+127	+34	+80	+54	+92	+91	+81	+143	+277
TOP 3%	TOP 10%	TOP 10%	TOP 25%	TOP 10%			TOP 2%	TOP 1%			TOP 25%

37

BRUNING DEPOSIT 1373

REGISTRATION NO.: 20890931 • DATE OF BIRTH: 02/14/23 • TATTOO: 1373

G A R Progress ————— *Basin Advance 3134* *G A R Phenom 7953* ————— *G A R New Design 5050*
Basin O Lass 1663

BASIN DEPOSIT 6249 **BRUNING MARIANNE 518**

EXAR Denver 2002B ————— *Basin Lucy 4288* *Bruning Poppy 1363* ————— *War Upgrade X126 T160*
Basin Lucy 1037

G A R Progress 830
B F Occ Focus 1650

ADJ. BW 68 • ADJ. WW 597 • SCROTAL 40 • %IMF 3.84 • REA 13.5 • RIBFAT .36

CED	BW	WW	YW	MILK	MARB	RE	\$M	\$W	\$F	\$B	\$C
+8	+1.2	+74	+126	+30	+1.27	+67	+72	+73	+79	+165	+286
		TOP 25%	TOP 30%	TOP 25%	TOP 10%		TOP 30%	TOP 15%		TOP 25%	TOP 20%

38

SPEC EXEMPLIFY 3014

REGISTRATION NO.: 20741865 • DATE OF BIRTH: 01/15/23 • TATTOO: 3014

Connealy Confidence 0100 ————— *Connealy Confidence Plus* *TEX Playbook 5437* ————— *Basin Payweight 1682*
Elbanna of Conanga 1209

LINZ EXEMPLIFY 71124 **SPEC PLAYBIRD 101**

R B Tour Of Duty 177 ————— *M A R Erica 1617* *SPEC Johnny Blackbird 901* ————— *SPEC Johnny Cash 7019*
MAR Erica Rito 1402

Rita 1C43 of 9M26 Complete
B & D Blackbird 408

ADJ. BW 79 • ADJ. WW 694 • SCROTAL 37.5 • %IMF 3.24 • REA 12.4 • RIBFAT .25

CED	BW	WW	YW	MILK	MARB	RE	\$M	\$W	\$F	\$B	\$C
+9	-.2	+67	+112	+31	+1.02	+97	+82	+76	+88	+164	+295
TOP 30%	TOP 20%			TOP 20%	TOP 20%	TOP 15%	TOP 10%	TOP 10%		TOP 25%	TOP 15%

39

SPEC TETON 3010

REGISTRATION NO.: 20752218 • DATE OF BIRTH: 02/07/23 • TATTOO: 3010

Connealy Confidence Plus TEX Empress 4012 TEX Teton 9052 Baldrige Waylon W34 GAR-EGL Protege Baldrige Blackcap T163
3F Epic 4631 TEX Primrose 0410 TEX Primrose 9113 HO Upwards Final Pride 312 Sitz Upward 307R MA Final Answer Pridella8113

ADJ. BW 82 • ADJ. WW 695 • SCROTAL 36 • %IMF 2.75 • REA 11 • RIBFAT .22

Table with 12 columns: CED, BW, WW, YW, MILK, MARB, RE, \$M, \$W, \$F, \$B, \$C. Values include -3, +3.9, +77, +127, +12, +1.20, +.69, +56, +56, +91, +174, +282.

40

BRUNING CONCLUSION 673

REGISTRATION NO.: 20890915 • DATE OF BIRTH: 01/31/23 • TATTOO: 673

K C F Bennett Consent Y75 Thomas Patricia 9705 K C F Bennett Summation SydGen Enhance SydGen Exceed 3223 SydGen Rita 2618
Connealy Onward Riverbend Blackbird 4301 Sandpoint Blackbird 8809 TMG E34 of B13 Sunrise G A R Sunrise TMG B13 of 127S Prophet

ADJ. BW 71 • ADJ. WW 514 • SCROTAL 38 • %IMF 3.38 • REA 13.2 • RIBFAT .25

Table with 12 columns: CED, BW, WW, YW, MILK, MARB, RE, \$M, \$W, \$F, \$B, \$C. Values include +15, -2.0, +73, +133, +28, +1.00, +.73, +70, +75, +84, +155, +271.

41

BRUNING PLUS ONE 1023

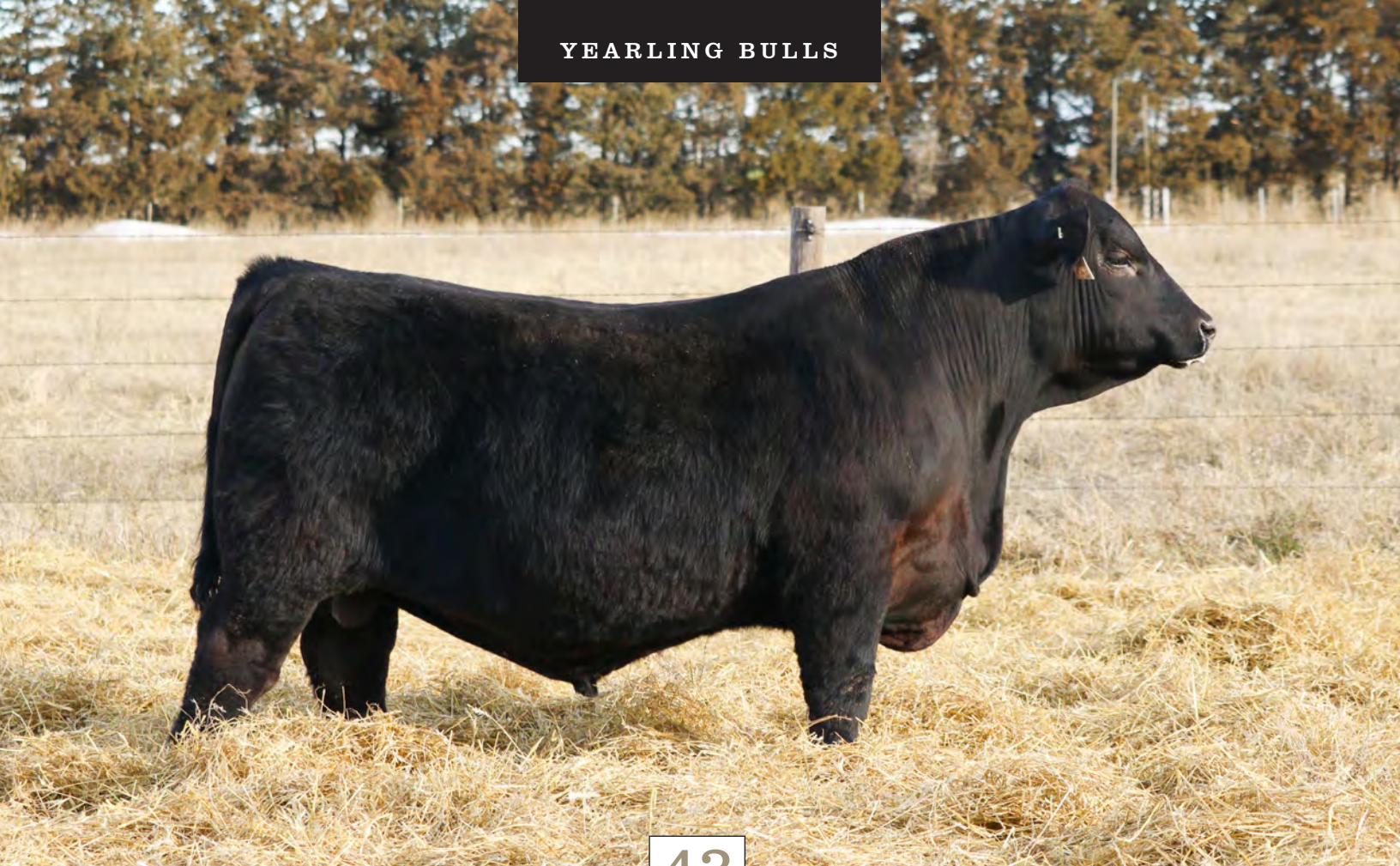
REGISTRATION NO.: 20892421 • DATE OF BIRTH: 02/03/23 • TATTOO: 1023

Connealy Confidence 0100 Elbanna of Conanga 1209 Connealy Confidence Plus G A R Prophet K263 G A R Prophet Chair Rock 5050 G A R 1131
E&B 1680 Precision 1023 E&B Lady 878 New Design 441 E&B Lady 1023 Precision 936 Bruning Pine 6112 War Upgrade X126 T160 Bruning Pine Drive 6280

ADJ. BW 70 • ADJ. WW 601 • SCROTAL 34 • %IMF 4.32 • REA 13.8 • RIBFAT .25

Table with 12 columns: CED, BW, WW, YW, MILK, MARB, RE, \$M, \$W, \$F, \$B, \$C. Values include +10, +.5, +56, +112, +27, +1.14, +.95, +52, +54, +102, +184, +291.

YEARLING BULLS



43

BRUNING CONCLUSION 1063

REGISTRATION NO.: 20890925 • DATE OF BIRTH: 02/05/23 • TATTOO: 1063

*K C F Bennett Consent Y75
Thomas Patricia 9705*

K C F Bennett Summation

Gardens Wave

*Gardens Highmark
Green Garden Lady 6255 S2*

V A R CONCLUSION 0234

BASIN LUCY 1022

*Connealy Onward
Riverbend Blackbird 4301*

Sandpoint Blackbird 8809

Basin Lucy 262S

*Vermilion Payweight J847
Basin Lucy 3829*

ADJ. BW 78 • ADJ. WW 636 • SCROTAL 38 • %IMF 3.08 • REA 13 • RIBFAT .38

CED	BW	WW	YW	MILK	MARB	RE	\$M	\$W	\$F	\$B	\$C
+6	+1.3	+74 TOP 25%	+121	+31 TOP 20%	+93 TOP 25%	+56	+81 TOP 10%	+80 TOP 5%	+75	+141	+264

Newest mating from the dam of Yuma, Basin Lucy 1022. She has produced a big happy family of over 40 ET calves scanning an average IMF @ 105 and REA @ 103. Lucy 1022 individual ratios BR @ 86, IMF @ 142, REA @ 101.



dam **BASIN LUCY 1022**



maternal grandsire **GARDENS WAVE**

49

BRUNING BALLAST 2073

REGISTRATION NO.: 20890941 • DATE OF BIRTH: 03/03/23 • TATTOO: 2073

Sitz Upward 307R ————— Plattermere Weigh Up K360 G A R Phenom 7953 ————— G A R New Design 5050
 Barbara of Plattermere 337 —————
BRUNING BALLAST 549 **BRUNING MARIANNE 898**
 Basin Yuma 4286 ————— TMG E08 of C27 YUMA B F Miss Martin Upgrade1452 ————— War Upgrade X126 T160
 TMG C27 of Z34 DISCOVERY ————— B F O C C Martin O J 835

ADJ. BW 71 • ADJ. WW 698 • SCROTAL 39 • %IMF 3.07 • REA 12.5 • RIBFAT .40

CED	BW	WW	YW	MILK	MARB	RE	\$M	\$W	\$F	\$B	\$C
+1	+3.6	+75 TOP 20%	+132 TOP 20%	+27	+83	+60	+64	+64	+89	+153	+262

50

SPEC ARMORY 3018

REGISTRATION NO.: 20752291 • DATE OF BIRTH: 3/28/23 • TATTOO: 3018

Connealy Arsenal 2174 ————— Connealy Armory Bushs Sure Deal 33 ————— Vin-Mar O'Reilly Factor
 Ebba of Conanga 808 —————
KF ARMORY 8089 **MALSONS ELBA 102B**
 Plattermere Weigh Up K360 ————— KF Mary Ann 6221 D H E Glencarnock Elba 511 ————— Woodhill Admiral 77K
 Mary Ann of Plattermere 177 ————— D H E Glencarnock Elba 113

ADJ. BW 70 • ADJ. WW 756 • SCROTAL 35 • %IMF 2.33* • REA 11.7* • RIBFAT .17*

CED	BW	WW	YW	MILK	MARB	RE	\$M	\$W	\$F	\$B	\$C
+11 TOP 15%	+4	+74 TOP 25%	+133 TOP 20%	+42 TOP 1%	+63	+54	+72 TOP 30%	+83 TOP 3%	+77	+127	+237

51

BRUNING JAMESON 163

REGISTRATION NO.: 20890904 • DATE OF BIRTH: 01/24/23 • TATTOO: 163

Basin Advance 3134 ————— Basin Deposit 6249 Connealy Thunder ————— Baldridge Kaboom K243 KCF
 Basin Lucy 4288 —————
BASIN JAMESON 1076 **BRUNING YOUNG LUCY 15**
 EXAR Monumental 6056B ————— Basin Joy 9140 Bruning Young Lucy 403 ————— Barstow Final Answer W73
 Basin Joy 5367 ————— B F New Design 276

ADJ. BW 74 • ADJ. WW 597 • SCROTAL 38 • %IMF 2.94 • REA 12.9 • RIBFAT .41

CED	BW	WW	YW	MILK	MARB	RE	\$M	\$W	\$F	\$B	\$C
+15 TOP 3%	-1.4 TOP 10%	+74 TOP 25%	+127 TOP 25%	+28	+84	+45	+85 TOP 10%	+77 TOP 10%	+83	+142	+269

52

BRUNING CONCLUSION 763

REGISTRATION NO.: 20890918 • DATE OF BIRTH: 02/01/23 • TATTOO: 763

K C F Bennett Consent Y75 Thomas Patricia 9705 K C F Bennett Summation G A R Ashland G A R Early Bird Chair Rock Ambush 1018
V A R CONCLUSION 0234 BRUNING WILHELMINA 400
Connealy Onward Riverbend Blackbird 4301 Sandpoint Blackbird 8809 Bruning Wilhelmina 277 Basin Yuma 4286 Bruning Ericana 1715

ADJ. BW 73 • ADJ. WW 588 • SCROTAL 37.5 • %IMF 3.17 • REA 13.9 • RIBFAT .31

Table with 12 columns: CED, BW, WW, YW, MILK, MARB, RE, \$M, \$W, \$F, \$B, \$C. Values include +13, -.5, +68, +125, +26, +.82, +.90, +57, +66, +83, +148, +249.

53

BRUNING CONCLUSION 483

REGISTRATION NO.: 20890946 • DATE OF BIRTH: 01/30/23 • TATTOO: 483

K C F Bennett Consent Y75 Thomas Patricia 9705 K C F Bennett Summation Connealy Thunder Baldrige Kaboom K243 KCF Parka of Conanga 241
V A R CONCLUSION 0234 BRUNING YOUNG LUCY 15
Connealy Onward Riverbend Blackbird 4301 Sandpoint Blackbird 8809 Bruning Young Lucy 403 Barstow Final Answer W73 B F New Design 276

ADJ. BW 76 • ADJ. WW 561 • SCROTAL 37 • %IMF 2.27 • REA 14.4 • RIBFAT .20

Table with 12 columns: CED, BW, WW, YW, MILK, MARB, RE, \$M, \$W, \$F, \$B, \$C. Values include +13, -.1, +70, +123, +30, +.07, +.96, +78, +76, +92, +122, +236.

54

BRUNING INCENTIVE 663

REGISTRATION NO.: 20890914 • DATE OF BIRTH: 01/31/23 • TATTOO: 663

Mohnen Substantial 272 SITZ Pride 200B Sitz Stellar 726D Connealy United 1116 Connealy Consensus 7229 Breea of Conanga 5403 985L
SITZ INCENTIVE 704H TMG E16 OF 8341 UNITED
Sitz Invasion 574D SITZ Barbaramere Nell 105D SITZ Barbaramere Nell 53F Silveiras Elba 8341 G A R Predestined Silveiras Elba 2520

ADJ. BW 72 • ADJ. WW 606 • SCROTAL 35 • %IMF 4.47 • REA 13 • RIBFAT .33

Table with 12 columns: CED, BW, WW, YW, MILK, MARB, RE, \$M, \$W, \$F, \$B, \$C. Values include +9, +.3, +65, +106, +25, +1.02, +.77, +85, +70, +80, +150, +280.

55

SPEC ON POINT 3022

REGISTRATION NO.: 20788126 • DATE OF BIRTH: 01/13/23 • TATTOO: 3022

Tehama Revere _____ S Powerpoint WS 5503 S Whitlock 179 _____ S Chisum 6175
S Queen Essa 248 _____

ELLINGSON ON POINT 9079 SPEC BARBARA JEAN 115

Mytty In Focus _____ EA Hyalite 7809 B & D Barbara 248 _____ Connealy Consensus 7229
EA Hyalite Lady 5042 _____ Barbara of Plattermere 337

ADJ. BW 73 • ADJ. WW 735 • SCROTAL 40 • %IMF 3.49 • REA 10.7 • RIBFAT .28

CED	BW	WW	YW	MILK	MARB	RE	\$M	\$W	\$F	\$B	\$C
+5	+1.0	+60	+100	+28	+67	+26	+91 TOP 3%	+67 TOP 30%	+72	+118	+244

56

BRUNING INCENTIVE 1513

REGISTRATION NO.: 20890985 • DATE OF BIRTH: 02/16/23 • TATTOO: 1513

Mohnen Substantial 272 _____ Sitz Stellar 726D G A R Momentum _____ G A R Progress
SITZ Pride 200B _____ G A R Big Eye 1770

SITZ INCENTIVE 704H BRUNING MARIANNE 287

Sitz Invasion 574D _____ SITZ Bararamere Nell 53F B F Miss Bingo Fin Ans 572 _____ Barstow Final Answer W73
SITZ Bararamere Nell 105D _____ B F WAR Bingo BGR 612

ADJ. BW 74 • ADJ. WW 594 • SCROTAL 38 • %IMF 2.24 • REA 13.5 • RIBFAT .32

CED	BW	WW	YW	MILK	MARB	RE	\$M	\$W	\$F	\$B	\$C
+9 TOP 30%	-.3 TOP 20%	+56	+96	+26	+88 TOP 30%	+54	+88 TOP 4%	+62	+78	+137	+266

57

BRUNING BALLAST 1683

REGISTRATION NO.: 20890938 • DATE OF BIRTH: 02/21/23 • TATTOO: 1683

Sitz Upward 307R _____ Plattermere Weigh Up K360 FF Rito 3R35 of 9Q23 Revenue _____ Rito Revenue 5M2 of 2536 Pre
Barbara of Plattermere 337 _____ Rita 9Q23 of Rita 5F56 GHM

BRUNING BALLAST 549 BRUNING HELENA 1168

Basin Yuma 4286 _____ TMG E08 of C27 YUMA MCR Concrete Blackbird 362 _____ G A R Concrete
TMG C27 of Z34 DISCOVERY _____ MCR Total Blackbird 419

ADJ. BW 71 • ADJ. WW 622 • SCROTAL 38 • %IMF 6.03 • REA 12.7 • RIBFAT .33

CED	BW	WW	YW	MILK	MARB	RE	\$M	\$W	\$F	\$B	\$C
+3	+1.7	+52	+96	+31 TOP 20%	+1.24 TOP 10%	+47	+64	+53	+73	+154	+264





THANK YOU

for your interest in our 2024 Production Sale

Happy Trails, Reiss & Heather Bruning

BRUNING FARMS

6062 ROAD Y
BRUNING, NE 68322

402-768-3332 · BRUNINGFARMS.COM



BRUNING FARMS

PRODUCTION SALE

SUNDAY, MARCH 17, 2024

1:00 PM · FAIRBURY LIVESTOCK CO., FAIRBURY, NE