



# TA CATTLE

**Annual Bull & Female Sale**

*Your One Stop Bull Shop*



**FRIDAY AT 1:30 PM**

**APRIL 8, 2022**

**WEST POINT LIVESTOCK / WEST POINT, NE**

*Selling 90 Red Angus, Angus, SimAngus and Charolais Cross Bulls  
plus 4 Red Angus Heifers and 100 Commercial Replacements*

# A TA CATTLE

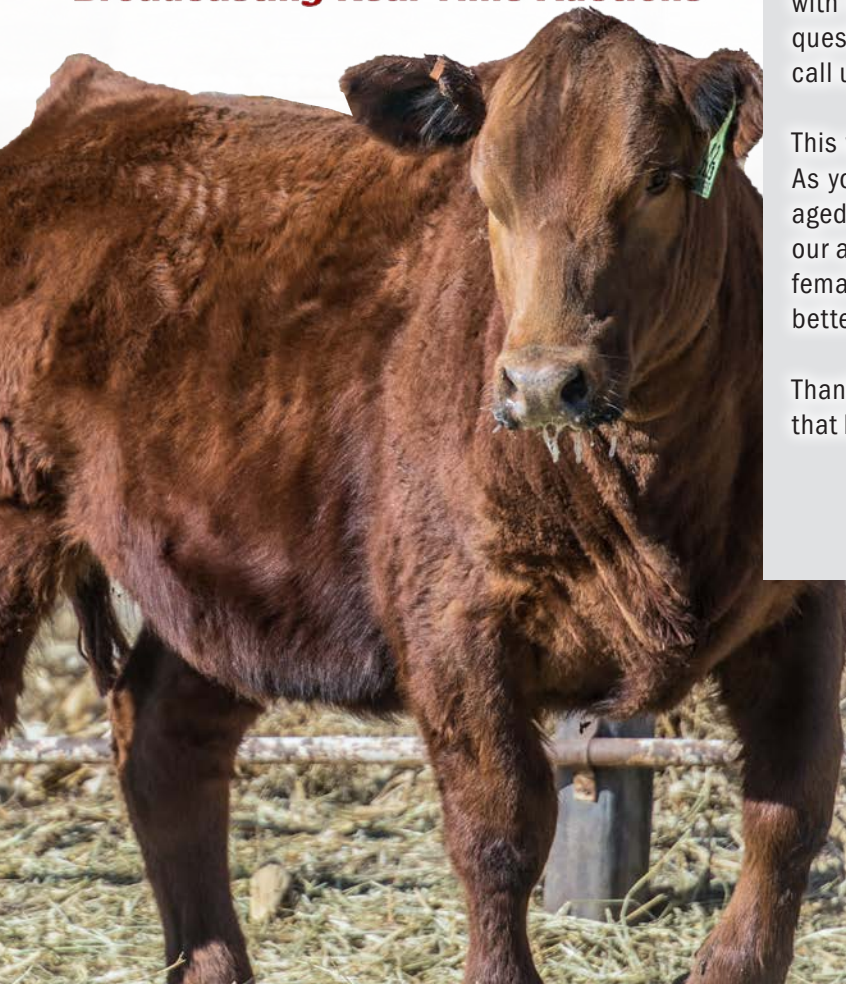
*Annual Bull and Female Sale*

FRIDAY AT 1:30 PM

*April 8, 2022*

WEST POINT LIVESTOCK / WEST POINT, NE

**DVAuction**  
*Broadcasting Real-Time Auctions*



## Welcome -

Welcome and thank you for your interest in our program. We want to thank everyone for coming to look or view our cattle online. The love of what we do drives us to bring our customers functional, maternally oriented cattle while excelling in growth and carcass. Without you, this sale wouldn't be possible. We are humbled to see all the repeat customers and thankful for the opportunity.

As a family operation that handles these cattle daily, we are confident in our genetics. We know how they perform on grass, in the feedlot, and on the grid—seeing these cattle mature assists in improving our genetics year after year. With feed costs as high as they are, bulls with these characteristics are a smart investment. If you have any questions regarding which sire groups would benefit you, feel free to call us, and we will gladly talk cattle with you.

This will be the final year we will be offering yearlings in the spring. As you look through the catalog, you will notice we are selling half-aged bulls that were held over just for this transition. We plan to have our annual bull sale December 16, 2022 with a select group of bred females. We are very excited for the future and feel this will help us better serve you.

Thanks again to all our customers, future customers, and everyone that helped make this sale possible. We hope to see you on sale day.

*Thank you* **TA CATTLE**



**TACATTLE.COM**

# Contact us

**Terry and Julie Albrecht**  
1905 H Avenue  
Thurston, NE 68062  
Cell: (402) 922-1001

**Travis and Lexi Albrecht**  
**Taryn, Amelia, Anson**  
502 20 Road  
Thurston, NE 68062  
Cell: (402) 922-1800

**Andy and Abbie Albrecht**  
**Atwood, Ariat**  
45212 861st Road  
Bassett, NE 68714  
Cell: (402) 922-1000

## SALE LOCATION

West Point Livestock Auction  
839 South Colfax | West Point, NE 68788  
Brian Brester.....402-750-5821  
Jon Shaben.....712-263-0755

## SALE DAY CONTACTS

Terry Albrecht.....402-922-1001  
Andy Albrecht.....402-922-1000  
Travis Albrecht.....402-922-1800

## AUCTIONEER

Matt Lowery.....308-750-6119

## RINGMEN

Chris Beutler, Livestock Digital.....402-380-8244  
Jason Hansen, Livestock Digital.....402-649-0550

## SPECIAL GUESTS

Berrett Simon, Red Angus Association.....316-452-1792  
Andy Albrecht, Top Dollar Angus.....402-922-1000

## VETERINARIANS

Pender-Emerson Vet Clinic.....402-695-2202  
Drs. James Albrecht and Melissa Heberer  
Josh Beutler.....402-385-3155

## ACCOMODATIONS

Horizon Inn and Suites.....402-372-1959  
Super 8.....402-372-3998

## ANNOUNCEMENTS

Announcements from the block take precedence over the information in this catalog.

## CATTLE VIEWING

Cattle can be viewed online at DV Auction.com or if you would like to view them in person, call Travis to arrange a time.

## ONLINE BIDDING

Visit DV Auction.com a few days before the sale to sign up for online bidding. The sale will be broadcast live.

## RETAINED INTEREST

We are retaining ½ interest in all bulls in the sale. We are selling the remaining ½ interest, full possession, and full salvage value. This option gives TA Cattle the option to collect, use, and market semen from the bull and does not restrict the purchaser from doing the same. This collection, unless agreed otherwise, would be done at the expense of TA Cattle, at the buyer's convenience. Also at the time of purchase, the highest bidder on a retained interest bull may elect to purchase exclusive semen rights for 100% of the purchase price in addition to the purchased price on retained bulls. If a buyer elects to purchase exclusive semen rights, TA Cattle interest then becomes in herd use only, but TA Cattle retains all rights to use the bull within their herd.

## GUARANTEE

All bulls selling for \$3000 or more are guaranteed for the first breeding season. A breeding season is defined as the 90 day period following the first turnout of the bull. If a replacement bull is available, he will be provided or if the buyer prefers, credit toward one bull will be given in the following sale, less salvage value of the injured bull. All injured bulls must be diagnosed by a veterinarian. Please notify us as soon as possible should injury occur and prior to the injured bull being sold for salvage.

## VACCINATION RECORD

All cattle have been vaccinated, starting at 30 days of age, at grass turn out, and again at pre-weaning and post-weaning. They were poured and dewormed. Vaccinations include 7-way clostridial, IBR, BVD, P13, BRSV, haemophilus somnus, and pasturellas. Any positive test results will be noted with EPDs throughout the catalog. The open heifers have also been Bangs vaccinated. The bulls and heifers have had their pre-breeding shot—Express FP 5-VL5. If you would like specific details on products used please give us a call. The bulls will be sold as guaranteed breeders according to the sale terms and conditions of the RAAA. Load out can be done anytime during the sale after settlement.

## DELIVERY

Free delivery up to 300 miles. Any bulls remaining will be hauled back to TA Cattle's feedlot and boarded free of charge until April 21. After that there will be a \$3.50/hd/day feed charge until they are picked up or delivered. If you would like TA Cattle to feed and breed the open heifers, let us know right after the sale so arrangements can be made. If you do not need our services, then heifers must be picked up sale day or the couple days following at West Point Livestock.

## CALVING EASE STAR RATING

- ★★★★ **Sure shot calving ease**
- ★★★ **All cows and most heifers**
- ★★ **Calve easy on cows**
- ★ **Recommended for cows**



# RED ANGUS ASSOCIATION

## GUIDE TO EPDS

**HB ..... HerdBuilder Index** – Need bulls for developing a profitable cowherd and maximizing the value of marketed progeny? Select a bull with a high HB value.

**GM ..... GridMaster Index** – If you market all of your calf crop and want to increase the value of that calf crop, select a bull with a high GM value to maximize your profit.

**CED ..... Calving Ease Direct** – Breeding Heifers? Select bulls with a high CED to increase the probability that the heifers will calve unassisted.

**BW ..... Birth Weight** – Predicts differences in birth weight. BW is included in the CED EPD, so simplify your decisions by selecting bulls based on CED instead of BW.

**WW ..... Weaning Weight and YW ..... Yearling Weight** – Predicts differences in weight at weaning and yearling. While selection based on these growth measures can increase your payweight, be cautious what the bull's other EPDs are.

**Milk ..... Milk** – Predicts differences in weaning weight of daughter's progeny due to milk production.

**ME ..... Maintenance Energy** – Selecting bulls with a lower ME EPD will decrease the amount of feed his daughters will require to maintain body weight.

**HPG ..... Heifer Pregnancy** – Retaining heifers? Select bulls with a high HPG to increase the percentage of exposures that result in a calving observation.

**CEM ..... Calving Ease Maternal** – Another number to pay attention to if you are retaining heifers. Selecting bulls with a high CEM will increase the probability of those daughters calving unassisted.

**STAY ..... Stayability** – The most important trait if your goal is developing cows that stay productive, thus increasing your profitability. Bulls that have a high Stay EPD are expected to sire daughters that remain productive in the herd until at least 6 years of age.

**MARB ..... Marbling Score** – Select bulls with high MARB EPD to increase the number of progeny that grade Choice or Prime.

**YG ..... Yield Grade** – Marketing calves on a grid? Placing selection pressure on YG EPD will decrease the number of YG discounts on gridmarketed progeny.

**CW ..... Carcass Weight** – Selecting bulls with a high CW EPD will increase the weight of the hanging carcass, which directly impacts revenue.

**REA ..... Rib Eye Area** – Need to add muscle? Select bulls with a high REA EPD to increase rib eye area, which favorably increases Yield Grade.

**BF ..... Backfat** – Need to reduce waste in carcasses? Select bulls with a low FAT EPD to reduce backfat, which favorably increases Yield Grade.



# SIMMENTAL ASSOCIATION

## GUIDE TO EPDS

**Calving Ease (CE):** Percent of unassisted births when used on heifers.

**Birth Weight (BW):** Pounds of birth weight.

**Weaning Weight (WW):** Pounds of weaning weight.

**Yearling Weight (YW):** Pounds of yearling weight.

**Maternal Calving Ease (MCE):** Percent of unassisted births in first-calving daughters.

**Milk (MLK):** Pounds of weaning weight due to milk.

**Maternal Weaning Weight (MWW):** Pounds of weaning weight due to milk and growth.

**\$Indexes:** Though EPDs allow for the comparison of genetic levels for many economically important traits, they only provide a piece of the economic puzzle. That's where \$ indexes come in. Through well conceived, rigorous mathematical computation, \$ indexes blend EPDs and economics to estimate an animal's overall impact on your bottom line. The same technology that led to the dramatic progress in swine, poultry and dairy genetics over the last several decades was used to develop the following \$ indexes:

- **All-Purpose Index (API):** Evaluates sires for use on the entire cow herd (bred to both Angus first-calf heifers and mature cows) with the portion of their daughters required to maintain herd size retained and the remaining heifers and steers put on feed and sold grade and yield.
- **Terminal Index (TI):** Evaluates sire for use on mature Angus cows with all offspring put on feed and sold grade and yield.

**Using API and TI:** First, determine which index to use; if you're keeping replacements use API, if not, TI. Then, just as with EPDs, zero in on the unit difference between bulls. (As described above, index units are in dollars per cow exposed.) The difference can be used to determine how much a bull is worth compared to another. Or, put another way, how much you can pay for one bull compared to another. For example, when buying an all-purpose type sire, you can quickly figure a bull scoring +100 for API is worth an extra \$6,000 over a +50 bull if both are exposed to 30 cows over 4 years ( $\$50 \text{ diff.} \times 30 \text{ hd.} \times 4 \text{ yr.} = \$6,000$ ). A percentile-ranking chart is required to determine where a bull's index value ranks him relative to other bulls in the breed. For percentile rankings or more detailed information about EPDs and \$ indexes visit [www.simmental.org](http://www.simmental.org).

**Yield Grade (YG):** Yield grade score.

**Carcass Weight (CW):** Pounds of carcass weight.

**Marbling (MRB):** Marbling score. Back Fat (BF): Inches of backfat.

**Ribeye Area (REA):** Square inches of ribeye.

**All-Purpose Index (API):** Dollars per cow exposed under an all-purpose-sire scenario. (See below for more details.)

**Terminal Index (TI):** Dollars per cow exposed under a terminal-sire scenario (See below for more details.)

# 107 REPLACEMENT HEIFERS

Moderate group of heifers that are going to make fantastic momma cows. I don't think a guy could go wrong with any of these. All proven herd sires that bring great mothering ability, udder suspension, and teat size. These are the kind that will stay in the herd for years and pay for themselves quickly.

*Ready to breed whenever it suits your operation!*

**Multimin 90 - Pre Breeding - Tract Scored - Guaranteed Open**



Red Angus



Red Angus



Red Angus  
From Aschoff Cattle



Char/Red Angus  
From Aschoff Cattle



Char/Red Angus  
Sired by LT Authority  
& LT Patriot



Black Angus



Black SimAngus



RWF F1 Hereford/Red Angus



BWF F1 Hereford/Black Angus





# Top Dollar Angus Feeder Calf Program

## Promote Your Verified Genetic Investment

Top Dollar Angus is the industry leader in third-party genetic verification and marketing assistance for superior Angus and Red Angus-based feeder cattle. Our program stamps a unique identity on the 'best of the best' by verifying and then showcasing their genetic merit. The Top Dollar Angus team works directly with a large number of feedyards and buyers to provide them with documented superior feeder cattle, coupled with genetic risk mitigation and the precision understanding they need to pursue your cattle with absolute confidence.

Top Dollar Angus enables cow-calf producers to benefit from the genetic value already built into their herds. Producers that invest in high-end genetics, as well as strong health and nutrition programs, need a means of positively differentiating their calves from average cattle. Top Dollar Angus does that. Industry demand is strong for genetically superior feeder calves with the right supporting documentation. Don't make buyers guess, let them know by putting the Top Dollar Angus badge of honor on your premium genetic investment.



### How it Works:

Our program begins with a FREE genetic evaluation based on the current/past herd sires used in your program. We evaluate the sires used in your herd based on their growth and carcass merit characteristics. A herd that qualifies for Top Dollar Angus has cattle that are at least 50% Angus or Red Angus and also ranks in the top 25% of its respective breed for growth and carcass merit.

Once qualified, our team provides boots on the ground to share this valuable information with buyers looking for high quality cattle that will go on feed and perform. Our team has experience coast to coast and works directly in all channels (video, local auction, direct and internet). Plus, we have the resources to provide a very fast turn-around.

### What our Customers Say:

*"Top Dollar Angus is a program that benefits all levels of the industry. The seedstock producer is rewarded for providing superior genetics to the commercial cattleman, who in turn supplies the feeder with efficient cattle that will produce top-end carcasses. As Top Dollar Angus continues to raise their qualifying standard, these cattlemen will have to up their game to purchase the genetics that will fit the program. These cattlemen will see a return on investment when offering reputation feeders at market time."*

– Jon Pedotti – San Simeon Creek Ranch, California



Nate Smith, General Manager • (620) 546-4839 • nate@topdollarangus.com  
 Kacey Jacobson • (701) 391-4646 • kacey@topdollarangus.com  
 Jake Feddes • (406) 581-8157 • jake@topdollarangus.com  
 Adam Menker • (419) 310-5344 • adam@topdollarangus.com  
 Jason Gagnon • (559) 723-6362 • jason@topdollarangus.com  
 Andy Albrecht • (402) 922-1000 • andy@topdollarangus.com

[www.topdollarangus.com](http://www.topdollarangus.com)



# better equipped **BETTER RESULTS**

Your ABS Representative is equipped with the finest people, technology, research, quality, and genetics. We have the ability to ensure the long term direction of your herd is on track and to make your breeding program a success. Together, we can accomplish your goals.



get to know

## **YOUR LOCAL REPRESENTATIVE**

Your ABS Representative is backed by the finest in breeding, research and management. Our commitment is to give you the most valuable genetics and programs for your dollar.

**TRAVIS ALBRECHT** Thurston, NE  
402-922-1800 - talbrecht03@hotmail.com

## **SET UP FOR SUCCESS**

### ✓ Full Genetic Services

*Genetic selection, Custom A.I. and Synchronization Services  
Implementation of Synchronization Programs, Calf Marketing Assistance*

✓ We at ABS strive to be leaders and have the resources to help you at every turn.

## **STAY IN TOUCH**



facebook.com/absbeef



@absbeef

**1-800-ABS-STUD | ABSBEEF.COM**

# Feature Bull



**LOT 1**



**TAC DRIFTER H10 - MATERNAL BROTHER OF LOT 1**



**3SCC VERNA B47 - GRANDDAM OF LOT 1**



**TAC SECURITY D56 - MATERNAL GRANDSIRE OF LOT 1**

**1**

REG  
**4392135**

DOB  
**3/15/20**

TATTOO  
**H254**

CALVING EASE  
★★★★

**TAC PERFECT STORM H254**

5L THE REAL DEAL 1687-143B  
**5L PERFECT STORM 1201-172D**  
5L RUBY 829-1201

TAC SECURITY D56  
**TAC MS VERNA F144 ET**  
3SCC VERNA B47

5L DEFENDER 560-30Z  
5L FIREFLY 275-1687  
BUF CRK THE RIGHT KIND U199  
5L RUBY 162-829  
5L BLOCKADE 2218-30B  
LAZJ MS BRIER 494-976  
BIEBER HARD DRIVE Y120  
3SCC VERNA U105

**ACT BW (RATIO)**  
**80 (112)**

**WW RATIO**  
**107**

**YW RATIO**  
**103**

**WDA**  
**3.05**

**DAM INFO** AGE: **4** MPPA: **104** MATURE WT: **1068**

| PRO | S   | HB | GM  | CED  | BW  | WW  | YW  | MLK | ME  | HP  | CEM  | ST   | MB  | YG   | CW   | REA | BF |
|-----|-----|----|-----|------|-----|-----|-----|-----|-----|-----|------|------|-----|------|------|-----|----|
| 108 | 39  | 69 | 15  | -1.8 | 64  | 103 | 23  | 8   | 9   | 14  | 0.68 | 0.04 | 40  | 0.29 | 0.00 |     |    |
| 20% | 76% | 4% | 20% | 49%  | 35% | 35% | 68% | 79% | 81% | 14% | 71%  | 6%   | 34% | 5%   | 17%  | 16% |    |

**100% AR**

|                        |                   |                        |                   |
|------------------------|-------------------|------------------------|-------------------|
| <b>ADJ IMF (RATIO)</b> | <b>3.75 (121)</b> | <b>ADJ REA (RATIO)</b> | <b>12.51 (96)</b> |
|------------------------|-------------------|------------------------|-------------------|

The dam of lot 1 is a full sibling to Drifter's mother. Drifter was the sale highlight last year selling to Twedt Red Angus and Rhodes Red Angus. Stacking Security, Perfect Storm, and Hard Drive has female maker written all over H254. As you look through the offering, you see the influence of these three sires scattered throughout the catalog. He combines all three!

# TWO-YEAR-OLD *Red Angus Bulls*



**LOT 2**

|  |                   |                            |                    |                             |                                   |           |                        |            |           |            |           |           |           |           |            |           |
|--|-------------------|----------------------------|--------------------|-----------------------------|-----------------------------------|-----------|------------------------|------------|-----------|------------|-----------|-----------|-----------|-----------|------------|-----------|
| <b>2</b>   | <b>TAC H255</b>   |                            |                    |                             |                                   |           |                        |            |           |            |           |           |           |           |            |           |
|  | REG<br>4392061    | 5L THE REAL DEAL 1687-1438 |                    | 5L DEFENDER 560-302         | <b>ACT BW (RATIO)</b><br>85 (119) |           |                        |            |           |            |           |           |           |           |            |           |
|  | DOB<br>3/15/20    | 5L PERFECT STORM 1201-172D |                    | 5L FIREFLY 275-1687         | <b>WW RATIO</b><br>105            |           |                        |            |           |            |           |           |           |           |            |           |
|  | TATTOO<br>H255    | 5L RUBY 829-1201           |                    | BUF CRK THE RIGHT KIND U199 | <b>YW RATIO</b><br>106            |           |                        |            |           |            |           |           |           |           |            |           |
| CALVING EASE<br>★★★★                             | TAC FRED A25      | 5L RUBY 162-829            | <b>WDA</b><br>3.13 |                             |                                   |           |                        |            |           |            |           |           |           |           |            |           |
|  | TAC MS LINDA F327 | SPUR GROUND POUNDER Y114   |                    |                             |                                   |           |                        |            |           |            |           |           |           |           |            |           |
|  | TAC A132          | 2RJL SIERRA Y725           |                    |                             |                                   |           |                        |            |           |            |           |           |           |           |            |           |
|  |                   | LSF TAKEOVER 9943W         |                    |                             |                                   |           |                        |            |           |            |           |           |           |           |            |           |
|  |                   | TBLC MISS 605 CHEYENNE 132 |                    |                             |                                   |           |                        |            |           |            |           |           |           |           |            |           |
| <b>DAM INFO AGE: 4 MPPA: 102 MATURE WT: 1162</b> |                   |                            |                    |                             |                                   |           |                        |            |           |            |           |           |           |           |            |           |
| <b>PRO S</b>                                     | <b>HB</b>         | <b>GM</b>                  | <b>CED</b>         | <b>BW</b>                   | <b>WW</b>                         | <b>YW</b> | <b>MLK</b>             | <b>ME</b>  | <b>HP</b> | <b>CEM</b> | <b>ST</b> | <b>MB</b> | <b>YG</b> | <b>CW</b> | <b>REA</b> | <b>BF</b> |
| 82   | 36                | 47                         | 13                 | -0.6                        | 64                                | 104       | 24                     | 8          | 11        | 8          | 13        | 0.47      | 0.07      | 29        | 0.06       | 0.00      |
| 61%  | 82%               | 27%                        | 39%                | 73%                         | 35%                               | 32%       | 62%                    | 78%        | 53%       | 26%        | 80%       | 34%       | 51%       | 25%       | 64%        | 16%       |
| <b>100% AR</b>                                   |                   |                            |                    | <b>ADJ IMF (RATIO)</b>      | 2.40 (77)                         |           | <b>ADJ REA (RATIO)</b> | 12.81 (98) |           |            |           |           |           |           |            |           |



5L PERFECT STORM 1201-172D - SIRE OF LOT 1 & 2

Females are going to be in high demand the next few years while we try to build back cow numbers. These Fred females are heavy milking, work horse style females that go back to High Capacity. They never have wowed you on paper but boy do they work. Talking to Larry, the Ruby cow family may be one of his favorites, leading us to Perfect Storm.

# ATA CATTLE

*Annual Bull and Female Sale*

OUR SALE DATE IS CHANGING!

*December 16, 2022*  
CHECK TACATTLE.COM FOR MORE INFO



# ATA CATTLE



C-BAR LEVERAGE 8115F - SIRE OF LOTS 4-8



3SCC VERNA B47 - DAM OF LOT 5

Leverage was our pick from C-Bar Red Angus two years ago going back to Stony, who is one of the most influential cows in the breed.

## 4 TAC LEVERAGE H131

|                      |  |  |   |
|----------------------|--|--|---|
| REG<br>4392167       | SPUR FRANCHISE OF GARTON<br><b>C-BAR LEVERAGE 8115F</b><br>ADHM STONY 503C | SPUR FRANCHISE 7070<br>H & H IRENE LASS 0135<br>LSF SAGA 1040Y<br>C-BAR MS STONY A302<br>LJC MISSION STATEMENT P27<br>GP FAITH 803<br>BECKTON LANCER F442 T<br>BUF CRK JULIET N036 | <b>ACT BW (RATIO)</b><br>83 (107)<br><b>WW RATIO</b><br>81<br><b>YW RATIO</b><br>93<br><b>WDA</b><br>2.86 |
| DOB<br>3/3/20        | GP WALLACE 016<br><b>TAC JULIET B921</b><br>BUF CRK JULIET W067            |  |   |
| TATTOO<br>H131       |  |  |   |
| CALVING EASE<br>★★★★ | <b>DAM INFO</b> AGE: 8 MPPA: 91 MATURE WT: 1552                            |  |   |
| <b>100% AR</b>       | <b>ADJ IMF (RATIO)</b> 1.99 (64) <b>ADJ REA (RATIO)</b> 12.21 (93)         |  |   |

This bull is really good any way you look at him. It was really hard not put this one in front of you last year, but wanted to show you why we are transitioning to aged bulls. I challenge you to find a better bull with these numbers, it's very hard to do. Maternal plus carcass.

## 5 TAC LEVERAGE H250

|                      |  |  |   |
|----------------------|--|--|---|
| REG<br>4392055       | SPUR FRANCHISE OF GARTON<br><b>C-BAR LEVERAGE 8115F</b><br>ADHM STONY 503C | SPUR FRANCHISE 7070<br>H & H IRENE LASS 0135<br>LSF SAGA 1040Y<br>C-BAR MS STONY A302<br>LACY GOLD BAR 8123<br>BIEBER LAURA 158W<br>BASIN TREND SETTER 455S<br>3SCC VERNA S154 | <b>ACT BW (RATIO)</b><br>80 (103)<br><b>WW RATIO</b><br>80<br><b>YW RATIO</b><br>88<br><b>WDA</b><br>2.76 |
| DOB<br>3/14/20       | BIEBER HARD DRIVE Y120<br><b>3SCC VERNA B47</b><br>3SCC VERNA U105         |  |   |
| TATTOO<br>H250       |  |  |   |
| CALVING EASE<br>★★★★ | <b>DAM INFO</b> AGE: 8 MPPA: 99 MATURE WT: 1654                            |  |   |
| <b>100% AR</b>       | <b>ADJ IMF (RATIO)</b> 1.95 (63) <b>ADJ REA (RATIO)</b> 11.99 (92)         |  |   |

Natural calf of 3SCC Verna B47, the dam of Blockade E66 and granddam of Drifter H10. Her influence sells throughout the catalog. Thank you to Sonstegards for the opportunity of owning this great female. The set of daughters she has left us is truly impressive.

WATCH AND BID ONLINE!

# DVAuction

Broadcasting Real-Time Auctions

### 6 TAC LEVERAGE H68

REG 4392111  
DOB 2/27/20  
TATTOO H68  
CALVING EASE ★★

SPUR FRANCHISE OF GARTON  
**C-BAR LEVERAGE 8115F**  
ADHM STONY 503C

5L BLOCKADE 2218-30B  
**TAC TAWNY E42**  
TAC TAWNY A15-X604

SPUR FRANCHISE 7070  
H & H IRENE LASS 0135  
LSF SAGA 1040Y  
C-BAR MS STONY A302  
5L DEFENDER 560-30Z  
5L OPAL 656-2218  
RED TER-RON RELOAD 703T  
3SCC TAWNY X604

|                |         |
|----------------|---------|
| ACT BW (RATIO) | 63 (87) |
| WW RATIO       | 94      |
| YW RATIO       | 92      |
| WDA            | 2.75    |

|          |        |          |                 |      |     |     |     |     |     |     |     |      |       |     |      |      |
|----------|--------|----------|-----------------|------|-----|-----|-----|-----|-----|-----|-----|------|-------|-----|------|------|
| DAM INFO | AGE: 5 | MPPA: 99 | MATURE WT: 1084 |      |     |     |     |     |     |     |     |      |       |     |      |      |
| PRO S    | HB     | GM       | CED             | BW   | WW  | YW  | MLK | ME  | HP  | CEM | ST  | MB   | YG    | CW  | REA  | BF   |
| 81       | 45     | 37       | 15              | -3.3 | 52  | 84  | 23  | -3  | 10  | 7   | 14  | 0.49 | -0.10 | 11  | 0.42 | 0.01 |
| 63%      | 66%    | 49%      | 16%             | 23%  | 77% | 74% | 72% | 22% | 65% | 39% | 71% | 30%  | 2%    | 88% | 6%   | 29%  |

**100% AR**      **ADJ IMF (RATIO)** 3.93 (127)      **ADJ REA (RATIO)** 13.93 (107)

Heifer bull deluxe that will be a true cow maker. The Blockade females have an unmatched mothering instinct with picture perfect udder and teat size. His granddam, Tawny, goes back to the great Basin Trend Setter.



TAC REBOURNE F105 ET - SIRE OF LOTS 9-10



LOT 7



LOT 9

### 7 TAC LEVERAGE H400

REG 4392107  
DOB 3/28/20  
TATTOO H400  
CALVING EASE ★★

SPUR FRANCHISE OF GARTON  
**C-BAR LEVERAGE 8115F**  
ADHM STONY 503C

RHRA GOLD RUSH 402 17T  
**TAC A408**  
OLC BELGA R408

SPUR FRANCHISE 7070  
H & H IRENE LASS 0135  
LSF SAGA 1040Y  
C-BAR MS STONY A302  
CCF GOLD BAR 0251  
RHRA MATTIE CHEY 019 402P  
OLC VALOR N131  
OLC BELGA L407

|                |          |
|----------------|----------|
| ACT BW (RATIO) | 78 (101) |
| WW RATIO       | 101      |
| YW RATIO       | 93       |
| WDA            | 2.98     |

|          |        |           |                 |      |     |     |     |     |     |     |     |      |       |     |      |      |
|----------|--------|-----------|-----------------|------|-----|-----|-----|-----|-----|-----|-----|------|-------|-----|------|------|
| DAM INFO | AGE: 9 | MPPA: 102 | MATURE WT: 1400 |      |     |     |     |     |     |     |     |      |       |     |      |      |
| PRO S    | HB     | GM        | CED             | BW   | WW  | YW  | MLK | ME  | HP  | CEM | ST  | MB   | YG    | CW  | REA  | BF   |
| 89       | 59     | 30        | 14              | -1.7 | 52  | 82  | 30  | 5   | 11  | 9   | 16  | 0.37 | -0.03 | 14  | 0.26 | 0.01 |
| 50%      | 37%    | 65%       | 36%             | 52%  | 77% | 78% | 10% | 62% | 41% | 10% | 47% | 60%  | 11%   | 82% | 21%  | 45%  |

**100% AR**      **ADJ IMF (RATIO)** 2.42 (78)      **ADJ REA (RATIO)** 12.42 (95)

Goes back to Gold Rush the sire of Hard Drive. If you need a heifer bull with power and carcass, this is a solid option.

### 9 TAC REBOURNE H226

REG 4392095  
DOB 3/11/20  
TATTOO H226  
CALVING EASE ★★

5L BOURNE 117-48A  
**TAC REBOURNE F105 ET**  
SDCC MARI GOLD 501W

TAC PROSPECT C2  
**TAC DANA E71**  
3SCC DANA A479

5L ADVANTAGE 3267-221Y  
5L ROXIE 854-117  
RED HILL B571 JULIAN 84S  
BUF CRK MARI GOLD T132  
LSF PROSPECT 2035Z  
VF PRINCESS ANN A236-054  
BHR GOLDEN BOY 854  
BSKF DANA X761

|                |          |
|----------------|----------|
| ACT BW (RATIO) | 76 (103) |
| WW RATIO       | 105      |
| YW RATIO       | 101      |
| WDA            | 3.06     |

|          |        |           |                 |      |     |     |     |     |     |     |     |      |       |     |      |      |
|----------|--------|-----------|-----------------|------|-----|-----|-----|-----|-----|-----|-----|------|-------|-----|------|------|
| DAM INFO | AGE: 5 | MPPA: 103 | MATURE WT: 1230 |      |     |     |     |     |     |     |     |      |       |     |      |      |
| PRO S    | HB     | GM        | CED             | BW   | WW  | YW  | MLK | ME  | HP  | CEM | ST  | MB   | YG    | CW  | REA  | BF   |
| 75       | 51     | 25        | 11              | -1.9 | 63  | 98  | 30  | 2   | 12  | 6   | 14  | 0.38 | -0.01 | 17  | 0.36 | 0.03 |
| 73%      | 54%    | 76%       | 67%             | 48%  | 36% | 45% | 13% | 47% | 32% | 62% | 62% | 56%  | 16%   | 72% | 10%  | 76%  |

**100% AR**      **ADJ IMF (RATIO)** 2.72 (98)      **ADJ REA (RATIO)** 14.04 (104)

Rebourne has that true herd bull look. He is a very easy keeper that never has an off day. The natural thickness and foot size set him apart from the rest. This bull is out of a very nice Prospect daughter, so performance is not a question.

### 8 TAC LEVERAGE H451

REG 4392127  
DOB 4/4/20  
TATTOO H451  
CALVING EASE ★★

SPUR FRANCHISE OF GARTON  
**C-BAR LEVERAGE 8115F**  
ADHM STONY 503C

3SCC DICTATE C74  
**TAC PRINCESS ANN E81**  
VF PRINCESS ANN A236-054

SPUR FRANCHISE 7070  
H & H IRENE LASS 0135  
LSF SAGA 1040Y  
C-BAR MS STONY A302  
3SCC DOMINOR W338  
MESSMER GINNIE V536  
LJC MISSION STATEMENT P27  
LARSON PRINCESS ANN 054-409

|                |         |
|----------------|---------|
| ACT BW (RATIO) | 67 (90) |
| WW RATIO       | 100     |
| YW RATIO       | 95      |
| WDA            | 2.95    |

|          |        |           |                 |      |     |     |     |     |     |     |     |      |       |     |      |      |
|----------|--------|-----------|-----------------|------|-----|-----|-----|-----|-----|-----|-----|------|-------|-----|------|------|
| DAM INFO | AGE: 5 | MPPA: 100 | MATURE WT: 1086 |      |     |     |     |     |     |     |     |      |       |     |      |      |
| PRO S    | HB     | GM        | CED             | BW   | WW  | YW  | MLK | ME  | HP  | CEM | ST  | MB   | YG    | CW  | REA  | BF   |
| 86       | 48     | 38        | 14              | -2.3 | 61  | 104 | 31  | 10  | 9   | 8   | 16  | 0.23 | -0.04 | 28  | 0.48 | 0.01 |
| 55%      | 59%    | 47%       | 28%             | 40%  | 47% | 32% | 8%  | 87% | 80% | 21% | 43% | 91%  | 8%    | 29% | 4%   | 41%  |

**100% AR**      **ADJ IMF (RATIO)** 1.95 (63)      **ADJ REA (RATIO)** 13.23 (101)

Leverage heifer bull with a different twist. Going back to the performance leader VF Princess Anne cow, who is also the dam to Prospect and Red Rock.

### 10 TAC REBOURNE H146

REG 4392173  
DOB 3/3/20  
TATTOO H146  
CALVING EASE ★★

5L BOURNE 117-48A  
**TAC REBOURNE F105 ET**  
SDCC MARI GOLD 501W

BHR GOLDEN BOY 854  
**3SCC DANA A479**  
BSKF DANA X761

5L ADVANTAGE 3267-221Y  
5L ROXIE 854-117  
RED HILL B571 JULIAN 84S  
BUF CRK MARI GOLD T132  
BHR GOLDEN BOY 453B  
LSF RED FAY LA425 P4025  
STEVENSON SALUTE H505T  
BIEBER TITAN DANA 803Z

|                |          |
|----------------|----------|
| ACT BW (RATIO) | 80 (103) |
| WW RATIO       | 102      |
| YW RATIO       | 93       |
| WDA            | 2.94     |

|          |        |           |                 |      |     |     |     |     |     |     |     |      |       |     |      |      |
|----------|--------|-----------|-----------------|------|-----|-----|-----|-----|-----|-----|-----|------|-------|-----|------|------|
| DAM INFO | AGE: 9 | MPPA: 104 | MATURE WT: 1550 |      |     |     |     |     |     |     |     |      |       |     |      |      |
| PRO S    | HB     | GM        | CED             | BW   | WW  | YW  | MLK | ME  | HP  | CEM | ST  | MB   | YG    | CW  | REA  | BF   |
| 59       | 46     | 14        | 12              | -2.1 | 57  | 82  | 28  | 2   | 11  | 6   | 15  | 0.40 | -0.04 | 5   | 0.24 | 0.02 |
| 91%      | 64%    | 92%       | 55%             | 43%  | 60% | 78% | 21% | 45% | 51% | 68% | 60% | 51%  | 9%    | 96% | 24%  | 59%  |

**100% AR**      **ADJ IMF (RATIO)** 2.67 (86)      **ADJ REA (RATIO)** 13.41 (103)

Rebourne heifer bull that has all the same pieces of lot 9. 501W has 21 direct daughters in production at our place right now. That is a testament of what we think of her.



5L BOURNE 117-48A- SIRE OF LOTS 11-12

Bourne is one of the most heavily used bulls in the breed. They are consistently small at birth. These two would make a great duo on a heifer project. Two peas in a pod.



TAC A191 - SIRE OF LOTS 13-14

A191 is still the go to heifer bull, the kind that just doesn't go out of style. Come easy, have crazy calf vigor and make awesome females. Not sure you if you ask any more from a sure shot heifer candidate.

**11 TAC BOURNE H14**

REG 4392137  
DOB 2/20/20  
TATTOO H14  
CALVING EASE ★★★★★

5L ADVANTAGE 3267-221Y  
**5L BOURNE 117-48A**  
5L ROXIE 854-117

BROWN RED OAK A7639  
**TAC MS SLEEK F528**  
TAC MS SLEEK D9

BUF CRK THE RIGHT KIND U199  
5L ADINA 195-3267  
5L SIGNATURE 5615  
XXX ROXIE 854 MR  
HUST CHIEF SEQUOYA R336  
BROWN MS P707 Y7686  
TAC A191  
TAC SLEEK B91

|                |         |
|----------------|---------|
| ACT BW (RATIO) | 69 (99) |
| WW RATIO       | 98      |
| YW RATIO       | 97      |
| WDA            | 2.75    |

DAM INFO AGE: 4 MPPA: 99 MATURE WT: 1066

| PRO | S   | HB  | GM  | CED  | BW  | WW  | YW  | MLK | ME | HP  | CEM | ST   | MB   | YG  | CW    | REA  | BF |
|-----|-----|-----|-----|------|-----|-----|-----|-----|----|-----|-----|------|------|-----|-------|------|----|
| 78  | 45  | 33  | 11  | -3.7 | 62  | 97  | 27  | -2  | 15 | 3   | 14  | 0.50 | 0.13 | 17  | -0.09 | 0.03 |    |
| 68% | 66% | 58% | 68% | 17%  | 40% | 48% | 35% | 24% | 3% | 98% | 69% | 28%  | 84%  | 73% | 91%   | 69%  |    |

100% AR      ADJ IMF (RATIO) 2.36 (76)      ADJ REA (RATIO) 11.72 (90)

**13 TAC H369**

REG 4392129  
DOB 3/25/20  
TATTOO H369  
CALVING EASE ★★★★★

LSF TAKEOVER 9943W  
**TAC A191**  
TBLC MISS 605 CHEYENNE 191

3SCC NET GAIN B615  
**TAC JUANADA D3349**  
O C C JUANADA 603R

HXC CONQUEST 4405P  
LSF WIDELOAD R5014 U8061  
TBLC CHEYENNE 605  
TBLC MISS TANK 678  
JACOBSON WORTH 1066  
3SCC LINDA X622  
O C C GLORY 950G  
O C C JUANADA 856F

|                |         |
|----------------|---------|
| ACT BW (RATIO) | 68 (90) |
| WW RATIO       | 102     |
| YW RATIO       | 103     |
| WDA            | 3.23    |

DAM INFO AGE: 6 MPPA: 101 MATURE WT: 1284

| PRO | S   | HB  | GM  | CED  | BW  | WW  | YW  | MLK | ME  | HP  | CEM | ST   | MB   | YG  | CW    | REA  | BF |
|-----|-----|-----|-----|------|-----|-----|-----|-----|-----|-----|-----|------|------|-----|-------|------|----|
| 82  | 33  | 49  | 15  | -3.4 | 60  | 99  | 24  | 5   | 13  | 7   | 12  | 0.58 | 0.19 | 25  | -0.02 | 0.05 |    |
| 62% | 86% | 22% | 23% | 21%  | 51% | 44% | 64% | 65% | 20% | 55% | 83% | 16%  | 97%  | 42% | 81%   | 96%  |    |

100% AR      ADJ IMF (RATIO) 2.31 (74)      ADJ REA (RATIO) 12.87 (98)



LOT 12

**14 TAC TAKEOVER H362**

REG 4392059  
DOB 3/24/20  
TATTOO H362  
CALVING EASE ★★★★★

LSF TAKEOVER 9943W  
**TAC A191**  
TBLC MISS 605 CHEYENNE 191

GP WALLACE 016  
**TAC SUPRISE B365**  
BIEBER SUPRISE 365Y

HXC CONQUEST 4405P  
LSF WIDELOAD R5014 U8061  
TBLC CHEYENNE 605  
TBLC MISS TANK 678  
LJC MISSION STATEMENT P27  
GP FAITH 803  
MESSMER PACKER S008  
BIEBER SURPRISE 9827

|                |          |
|----------------|----------|
| ACT BW (RATIO) | 83 (107) |
| WW RATIO       | 103      |
| YW RATIO       | 101      |
| WDA            | 3.22     |

DAM INFO AGE: 8 MPPA: 100 MATURE WT: 1414

| PRO | S   | HB  | GM  | CED  | BW  | WW  | YW  | MLK | ME  | HP  | CEM | ST   | MB   | YG  | CW   | REA  | BF |
|-----|-----|-----|-----|------|-----|-----|-----|-----|-----|-----|-----|------|------|-----|------|------|----|
| 90  | 41  | 49  | 10  | -1.1 | 69  | 112 | 22  | 6   | 11  | 5   | 14  | 0.43 | 0.03 | 30  | 0.30 | 0.01 |    |
| 47% | 73% | 22% | 79% | 64%  | 18% | 18% | 81% | 71% | 44% | 82% | 62% | 43%  | 32%  | 22% | 16%  | 45%  |    |

100% AR      ADJ IMF (RATIO) 1.93 (62)      ADJ REA (RATIO) 12.95 (99)

**12 TAC BOURNE H111**

REG 4392063  
DOB 3/1/20  
TATTOO H111  
CALVING EASE ★★★★★

5L ADVANTAGE 3267-221Y  
**5L BOURNE 117-48A**  
5L ROXIE 854-117

TAC FRED A25  
**TAC MS SYSCO D235**  
TAC SYSCO A10

BUF CRK THE RIGHT KIND U199  
5L ADINA 195-3267  
5L SIGNATURE 5615  
XXX ROXIE 854 MR  
SPUR GROUND POUNDER Y114  
2R1J SIERRA Y725  
3SCC HOB0 X05  
3SCC SYSCO X55

|                |         |
|----------------|---------|
| ACT BW (RATIO) | 75 (99) |
| WW RATIO       | 89      |
| YW RATIO       | 88      |
| WDA            | 2.67    |

DAM INFO AGE: 6 MPPA: 95 MATURE WT: 1280

| PRO | S   | HB  | GM  | CED  | BW  | WW  | YW  | MLK | ME | HP  | CEM | ST   | MB   | YG  | CW    | REA  | BF |
|-----|-----|-----|-----|------|-----|-----|-----|-----|----|-----|-----|------|------|-----|-------|------|----|
| 96  | 74  | 23  | 14  | -3.8 | 54  | 82  | 27  | -6  | 16 | 7   | 16  | 0.47 | 0.14 | 10  | -0.11 | 0.04 |    |
| 37% | 13% | 80% | 27% | 16%  | 71% | 78% | 35% | 15% | 3% | 55% | 45% | 34%  | 88%  | 89% | 93%   | 89%  |    |

100% AR      ADJ IMF (RATIO) 2.58 (83)      ADJ REA (RATIO) 11.18 (85)





**15 TAC HOBO H40**

REG 4392123  
DOB 2/24/20  
TATTOO H40

BASIN HOBO 79E  
**BASIN HOBO 0545**  
BASIN ERICA 330E

TAC A191  
**TAC MS PRINCESS ANNE F98 ET**  
LARSON PRINCESS ANN 054-409

BUF CRK HOBO 2595  
DOUBLE FORK 079Z  
BITTERROOT GOLD 25XA  
BASIN ERICA 3380  
LSF TAKEOVER 9943W  
TBLC MISS 605 CHEYENNE 191  
LORENZEN PRIME CUT 7102  
LARSON PRINCESS ANN 409-211

**ACT BW (RATIO)**  
71 (101)  
**WW RATIO**  
101  
**YW RATIO**  
100  
**WDA**  
2.87

CALVING EASE ★★★★★  
DAM INFO AGE: 4 MPPA: 100 MATURE WT: 1280

| PRO | S   | HB  | GM  | CED  | BW  | WW  | YW  | MLK | ME  | HP  | CEM | ST   | MB   | YG  | CW   | REA  | BF |
|-----|-----|-----|-----|------|-----|-----|-----|-----|-----|-----|-----|------|------|-----|------|------|----|
| 113 | 74  | 39  | 15  | -2.2 | 63  | 101 | 26  | -1  | 9   | 8   | 18  | 0.39 | 0.15 | 30  | 0.05 | 0.03 |    |
| 15% | 12% | 44% | 18% | 42%  | 39% | 39% | 46% | 31% | 78% | 26% | 13% | 53%  | 91%  | 22% | 66%  | 81%  |    |

**100% AR**      **ADJ IMF (RATIO)** 2.11 (68)      **ADJ REA (RATIO)** 12.08 (92)

Basin Hobo did it again. A true cow maker that has been through the true test - TIME! Combines 191 and A236 on the bottom side with CE and performance. The puzzle just needs one more piece. You.

**16 TAC DOUBLE BARREL H348**

REG 4392149  
DOB 3/23/20  
TATTOO H348

RED BENCHMARK TRANSITION 10-14  
**3SCC DOUBLE BARREL E146**  
NSFR MTX C71

TAC SECURITY D56  
**TAC MS VERNA F67 ET**  
3SCC VERNA B47

LSF MEW GAME CHANGER 1613Y  
RED BENCHMARK LANA 60'11  
RED SOO LINE POWER EYE 161X  
NSFR MTX W17  
5L BLOCKADE 2218-30B  
LAZYS MS BRIER 494-976  
BIEBER HARD DRIVE Y120  
3SCC VERNA U105

**ACT BW (RATIO)**  
64 (92)  
**WW RATIO**  
100  
**YW RATIO**  
98  
**WDA**  
2.90

CALVING EASE ★★★★★  
DAM INFO AGE: 4 MPPA: 100 MATURE WT: 1132

| PRO | S   | HB  | GM  | CED  | BW  | WW  | YW  | MLK | ME  | HP  | CEM | ST   | MB   | YG  | CW   | REA  | BF |
|-----|-----|-----|-----|------|-----|-----|-----|-----|-----|-----|-----|------|------|-----|------|------|----|
| 109 | 58  | 51  | 15  | -3.3 | 62  | 96  | 26  | 4   | 10  | 8   | 16  | 0.60 | 0.11 | 33  | 0.06 | 0.01 |    |
| 19% | 38% | 19% | 15% | 23%  | 40% | 49% | 40% | 54% | 66% | 21% | 41% | 13%  | 74%  | 15% | 64%  | 33%  |    |

**100% AR**      **ADJ IMF (RATIO)** 2.49 (80)      **ADJ REA (RATIO)** 11.43 (87)

His dam is another maternal sibling to Drifter and lot 1. Have several different combinations as you flip through the catalog and any one of them could feature the sale. He is one of the best structured bulls of the entire offering, hitting his track with every step. Double Barrel is an out-cross heifer bull that really stamps them with a great phenotype.



3SCC DOUBLE BARREL E146 - SIRE OF LOTS 16-17



**LOT 17**



**LOT 19**

**17 TAC DOUBLE BARREL H281**

REG 4392103  
DOB 3/18/20  
TATTOO H281  
CALVING EASE ★★★★★

RED BENCHMARK TRANSITION 10-14  
**3SCC DOUBLE BARREL E146**  
NSFR MTX C71

5L BLOCKADE 2218-30B  
**TAC MS ABIGRACE F113 ET**  
TAC ABIGRACE C143-L7730 ET

LSF MEW GAME CHANGER 1613Y  
RED BENCHMARK LANA 60'11  
RED SOO LINE POWER EYE 161X  
NSFR MTX W17

5L DEFENDER 560-30Z  
5L OPAL 656-2218  
BECKTON NEW ERA Y194  
BROWN MS ABIGRACE L7730

**ACT BW (RATIO) 65 (93)**  
**WW RATIO 95**  
**YW RATIO 95**  
**WDA 2.79**

**DAM INFO AGE: 4 MPPA: 97**

| PRO | S   | HB  | GM  | CED  | BW  | WW  | YW  | MLK | ME  | HP  | CEM | ST   | MB   | YG  | CW   | REA  | BF |
|-----|-----|-----|-----|------|-----|-----|-----|-----|-----|-----|-----|------|------|-----|------|------|----|
| 73  | 24  | 49  | 16  | -3.0 | 57  | 92  | 20  | 5   | 11  | 7   | 12  | 0.55 | 0.01 | 29  | 0.18 | 0.00 |    |
| 76% | 94% | 23% | 14% | 27%  | 60% | 59% | 91% | 65% | 51% | 54% | 86% | 20%  | 23%  | 25% | 37%  | 9%   |    |

**100% AR**      **ADJ IMF (RATIO) 4.55 (147)**      **ADJ REA (RATIO) 11.75 (90)**

Same look and design of lot 16 backed by an equally impressive dam. The Abigrace females are some of our very best mothers. L7730 is no stranger to the breed being the first million dollar valued Red Angus female.

**19 TAC ROLLIN DEEP H110**

REG 4392065  
DOB 3/1/20  
TATTOO H110  
CALVING EASE ★★

BIEBER ROOSEVELT W384  
**BIEBER ROLLIN DEEP Y118**  
BIEBER TILLY 399W

RCC EVA'S CANYON M206  
**HATS JACKIE 7R11**  
HATS JACKIE 4R2

BIEBER ROUGH RIDER 10712  
BIEBER SHEBA 9602  
BIEBER BOONE 8000  
BIEBER TILLY 303S  
BFCK CHEROKEE CNYN 4912  
PELTONS MISS EVA 0143K  
PINE RIDGE 01-95/1R29  
HATS JACKIE 1R4

**ACT BW (RATIO) 73 (96)**  
**WW RATIO 99**  
**YW RATIO 98**  
**WDA 3.00**

**DAM INFO AGE: 15 MPPA: 101 MATURE WT: 1260**

| PRO | S   | HB  | GM  | CED  | BW  | WW  | YW  | MLK | ME  | HP  | CEM | ST   | MB   | YG  | CW   | REA  | BF |
|-----|-----|-----|-----|------|-----|-----|-----|-----|-----|-----|-----|------|------|-----|------|------|----|
| 67  | 54  | 12  | 11  | -1.6 | 56  | 83  | 26  | 7   | 12  | 7   | 16  | 0.35 | 0.08 | 17  | 0.19 | 0.04 |    |
| 84% | 46% | 93% | 76% | 54%  | 65% | 76% | 46% | 76% | 24% | 54% | 41% | 64%  | 57%  | 70% | 34%  | 91%  |    |

**93.8% AR 6.2% XX**      **ADJ IMF (RATIO) 2.14 (69)**      **ADJ REA (RATIO) 12.88 (98)**

His dam turned 15 this week and don't remember a year she wasn't AI bred. There is true value in longevity in the cowherd, which is a trait that is undoubtedly undervalued. Rollin Deep was a great match for her. Lot 19 has been one of the favorites all year.



**TAC BLOCKADE E66 - SIRE OF LOTS 18**

**18 TAC BLOCKADE H15**

REG 4392109  
DOB 2/20/20  
TATTOO H15  
CALVING EASE ★★★★★

5L BLOCKADE 2218-30B  
**TAC BLOCKADE E66**  
3SCC VERNA B47

3SCC HOB0 X05  
**TAC PHOEBE A97**  
3SCC PHOEBE W133

5L DEFENDER 560-30Z  
5L OPAL 656-2218  
BIEBER HARD DRIVE Y120  
3SCC VERNA U105  
BASIN HOB0 0545  
3SCC CLASSY U211  
HAMMEL ROMEO 212T-ET  
3SCC PHOEBE S327

**ACT BW (RATIO) 71 (92)**  
**WW RATIO 88**  
**YW RATIO 87**  
**WDA 2.69**

**DAM INFO AGE: 9 MPPA: 101 MATURE WT: 1254**

| PRO | S   | HB  | GM  | CED  | BW  | WW  | YW  | MLK | ME  | HP  | CEM | ST   | MB   | YG  | CW   | REA  | BF |
|-----|-----|-----|-----|------|-----|-----|-----|-----|-----|-----|-----|------|------|-----|------|------|----|
| 103 | 49  | 54  | 16  | -4.1 | 46  | 71  | 25  | -2  | 9   | 8   | 16  | 0.62 | 0.07 | 26  | 0.08 | 0.01 |    |
| 26% | 56% | 15% | 10% | 13%  | 90% | 90% | 51% | 26% | 89% | 32% | 48% | 11%  | 53%  | 34% | 59%  | 29%  |    |

**100% AR**      **ADJ IMF (RATIO) 3.70 (119)**      **ADJ REA (RATIO) 10.22 (78)**

An E66 son that throws a different twist on things than normal. Heifer bull deluxe backed by nine-year old Basin Hobo granddaughter.

**20 TAC MOVIN DEEPER H532**

REG 4392133  
DOB 4/24/20  
TATTOO H532  
CALVING EASE ★★

BIEBER ROLLIN DEEP Y118  
**TAC MOVIN DEEPER D178**  
VF TAMARA A196-545

3SCC LANCER W207  
**3SCC SIERRA A65**  
3SCC SIERRA W195

BIEBER ROOSEVELT W384  
BIEBER TILLY 399W  
LARSON MASTERPIECE 009  
LARSON TAMARA 545-556  
HAMMEL LANCER 41P  
UBAR COPPERQUEEN 506  
3SCC ZEUS T70  
3SCC SIERRA T82

**ACT BW (RATIO) 96 (124)**  
**WW RATIO 106**  
**YW RATIO 96**  
**WDA 3.18**

**DAM INFO AGE: 9 MPPA: 103 MATURE WT: 1200**

| PRO | S   | HB  | GM  | CED | BW  | WW  | YW | MLK | ME  | HP  | CEM | ST   | MB   | YG  | CW   | REA  | BF |
|-----|-----|-----|-----|-----|-----|-----|----|-----|-----|-----|-----|------|------|-----|------|------|----|
| 67  | 51  | 16  | 8   | 1.4 | 62  | 94  | 32 | 12  | 12  | 4   | 18  | 0.24 | 0.01 | 23  | 0.36 | 0.03 |    |
| 84% | 54% | 89% | 95% | 95% | 42% | 54% | 5% | 93% | 36% | 93% | 18% | 90%  | 21%  | 48% | 10%  | 69%  |    |

**100% AR**      **ADJ IMF (RATIO) 2.03 (66)**      **ADJ REA (RATIO) 13.15 (101)**

Out of a nine-year-old Lancer daughter that has put several daughters back into the program. The Movin Deeper cattle have lots of shape and natural thickness.

**21 TAC MOVIN DEEPER H326**

REG 4392077  
DOB 3/22/20  
TATTOO H326  
CALVING EASE ★★★★★

BIEBER ROLLIN DEEP Y118  
**TAC MOVIN DEEPER D178**  
VF TAMARA A196-545

TAC GAINER A207  
**TAC C388-Y170**  
TBLC MISS TANK 170

BIEBER ROOSEVELT W384  
BIEBER TILLY 399W  
LARSON MASTERPIECE 009  
LARSON TAMARA 545-556  
BIEBER ROLLIN DEEP Y118  
BIEBER RED BEVERLY 207W  
CRSA 6X  
3R MS COLT 204G 160L

**ACT BW (RATIO) 64 (84)**  
**WW RATIO 87**  
**YW RATIO 91**  
**WDA 2.85**

**DAM INFO AGE: 7 MPPA: 102 MATURE WT: 1280**

| PRO | S   | HB  | GM  | CED  | BW  | WW  | YW  | MLK | ME  | HP  | CEM | ST   | MB   | YG  | CW   | REA  | BF |
|-----|-----|-----|-----|------|-----|-----|-----|-----|-----|-----|-----|------|------|-----|------|------|----|
| 91  | 74  | 17  | 13  | -2.1 | 51  | 81  | 30  | 3   | 12  | 8   | 18  | 0.37 | 0.13 | 16  | 0.00 | 0.04 |    |
| 45% | 13% | 88% | 49% | 43%  | 79% | 80% | 11% | 47% | 38% | 29% | 13% | 60%  | 85%  | 76% | 77%  | 91%  |    |

**100% AR**      **ADJ IMF (RATIO) 3.44 (124)**      **ADJ REA (RATIO) 11.12 (82)**

Movin Deeper heifer bull out of a cow that puts one in the sale year after year.



**LOT 23**



**LOT 22**

**23**

**TAC PAYWEIGHT H477**

REG  
4392175

DOB  
4/8/20

TATTOO  
H477

CALVING EASE  
★★★★

BASIN PAYWEIGHT 1682  
CONNEALY 1682 3657  
POLLETTA OF CONANGA 3657  
  
5L BLOCKADE 2218-30B  
**TAC GROUND SOW E38**  
TAC GROUND SOW C100-A112

BASIN PAYWEIGHT 006S  
21AR O LASS 7017  
CONNEALY CONFIDENCE 0100  
POLLY OF CONANGA 721  
5L DEFENDER 560-30Z  
5L OPAL 656-2218  
TAC CONQUEST A115  
TAC GROUND SOW A112

|                |
|----------------|
| ACT BW (RATIO) |
| 55 (75)        |
| WW RATIO       |
| 81             |
| YW RATIO       |
| 95             |
| WDA            |
| 2.94           |

**DAM INFO** AGE: 5 MPPA: 92 MATURE WT: 1130

| PRO | S   | HB | GM | CED  | BW  | WW  | YW  | MLK | ME  | HP  | CEM | ST   | MB   | YG | CW    | REA  | BF |
|-----|-----|----|----|------|-----|-----|-----|-----|-----|-----|-----|------|------|----|-------|------|----|
| 101 | 41  | 60 | 17 | -4.5 | 63  | 107 | 19  | 4   | 10  | 9   | 13  | 0.64 | 0.26 | 40 | -0.07 | 0.04 |    |
| 30% | 73% | 9% | 6% | 9%   | 36% | 26% | 95% | 57% | 66% | 10% | 77% | 9%   | 99%  | 5% | 88%   | 92%  |    |

100% AR

|                 |            |                 |            |
|-----------------|------------|-----------------|------------|
| ADJ IMF (RATIO) | 5.11 (165) | ADJ REA (RATIO) | 11.49 (88) |
|-----------------|------------|-----------------|------------|

Black heifer bull prospect that is wide based at the ground stacking several great cow makers in his pedigree. His sire is a true cow maker with Payweight 1682 and Connealy Confidence 0100. The 0100 line are some of the best maternal oriented mommas in the breed. The set of females he leaves behind will be hard to put a price on.

**22**

**TAC STEIGER H284**

REG  
4565595

DOB  
3/18/20

TATTOO  
H284

CALVING EASE  
★★★★

GP WALLACE 016  
**TAC STEIGER F155 ET**  
TBLC MISS 605 CHEYENNE 191  
  
SDCC JACKHAMMER 734Y  
**TAC MAGGIE A172**  
3SCC MAGGIE W172

LJC MISSION STATEMENT P27  
GP FAITH 803  
TBLC CHEYENNE 605  
TBLC MISS TANK 678  
HXC JACKHAMMER 8800U  
BECKTON ANGEL L845 WR  
3SCC ZEPPLIN S99  
3SCC MAGGIE S322

|        |
|--------|
| ACT BW |
| 56     |

**DAM INFO** AGE: 9 MPPA: 97 MATURE WT: 1530

| PRO | S   | HB  | GM  | CED  | BW  | WW  | YW  | MLK | ME  | HP  | CEM | ST   | MB   | YG  | CW   | REA  | BF |
|-----|-----|-----|-----|------|-----|-----|-----|-----|-----|-----|-----|------|------|-----|------|------|----|
| 88  | 54  | 34  | 10  | -0.9 | 67  | 106 | 21  | 6   | 10  | 5   | 17  | 0.41 | 0.06 | 26  | 0.17 | 0.02 |    |
| 51% | 46% | 57% | 86% | 67%  | 24% | 28% | 87% | 68% | 76% | 81% | 25% | 48%  | 46%  | 35% | 38%  | 47%  |    |

100% AR

|         |      |         |      |
|---------|------|---------|------|
| ACT IMF | 2.55 | ACT REA | 12.9 |
|---------|------|---------|------|

If you're looking for one with extra shape and dimension, lot 22 is your guy. Not going to make one much stouter than the Steigers.

**24**

**TAC EXCELLENCY H64**

REG  
4392159

DOB  
2/27/20

TATTOO  
H64

CALVING EASE  
★★★★

N BAR EMULATION EXT  
**SINCLAIR EXCELLENCY 5X25**  
IDEAL 4465 OF 6807 4286  
  
TAC ENCLOSURE D169  
**TAC MS HANNAH F522**  
3SCC HANNAH B04

EMULATION N BAR 5522  
N BAR PRIMROSE 2424  
D H D TRAVELER 6807  
E E 4286 OF IDEAL 2240 1254  
5L BLOCKADE 2218-30B  
RIDGE AQUILA 836-456  
BLACK BRYLOR KODIAK 204Y  
3SCC HANNAH Z100

|                |
|----------------|
| ACT BW (RATIO) |
| 60 (88)        |
| WW RATIO       |
| 90             |
| YW RATIO       |
| 100            |
| WDA            |
| 2.84           |

**DAM INFO** AGE: 4 MPPA: 96 MATURE WT: 1088

| PRO | S   | HB  | GM  | CED  | BW  | WW  | YW  | MLK | ME  | HP  | CEM | ST   | MB   | YG | CW    | REA  | BF |
|-----|-----|-----|-----|------|-----|-----|-----|-----|-----|-----|-----|------|------|----|-------|------|----|
| 107 | 49  | 58  | 16  | -2.9 | 61  | 101 | 17  | 3   | 13  | 7   | 15  | 0.43 | 0.26 | 50 | -0.05 | 0.03 |    |
| 22% | 57% | 11% | 14% | 29%  | 47% | 40% | 98% | 48% | 18% | 55% | 60% | 43%  | 99%  | 1% | 86%   | 72%  |    |

100% AR

|                 |            |                 |            |
|-----------------|------------|-----------------|------------|
| ADJ IMF (RATIO) | 3.68 (119) | ADJ REA (RATIO) | 10.43 (80) |
|-----------------|------------|-----------------|------------|

Sleep all night heifer bull that has awesome length of body and an abundance of lower quarter. Excellency is still a leader in the breed for tenderness and leaves a great set of females with Ideal 4465 in his pedigree.

# TWO-YEAR-OLD Black Angus Bulls



**LOT 25**

**25 TAC PAYWEIGHT H199**

REG 20302635  
DOB 03/07/20  
TATTOO H199

Basin Payweight 1682  
**Basin Payweight Plus 6048**  
EXAR Royal Lass 2810

Tac Cold Cash D179  
**Tac Zara F192-X071**  
BSAR Zara 071X

Basin Payweight 006S  
21AR O Lass 7017  
Connealy Consensus 7229  
Exar Royal Lass 1067  
Barstow Cash  
O C C Juanada 603R  
Bsar United 210T  
Bear Mtn Zara 8071

**ACT BW (RATIO)**  
74 (100)

CALVING EASE ★★★

| DAM INFO |      | AGE: 4 | MATURE WT: 1150 |     |     |    |    |    |     |     |     |     |     |     |     |
|----------|------|--------|-----------------|-----|-----|----|----|----|-----|-----|-----|-----|-----|-----|-----|
| CED      | BW   | WW     | YW              | MLK | SEN | CW | MB | RE | FAT | \$M | \$W | \$F | \$G | \$B | \$C |
| 13       | -1.6 | 61     | 111             | 31  | -14 |    |    |    |     | 81  | 69  | 86  |     |     |     |
| 10%      | 5%   | 45%    | 40%             | 15% | 45% |    |    |    |     | 10% | 30% | 50% |     |     |     |

**100% ANGUS**

|                |      |                |      |
|----------------|------|----------------|------|
| <b>ACT IMF</b> | 2.78 | <b>ACT REA</b> | 12.1 |
|----------------|------|----------------|------|

Payweight Plus son going back to OCC Juanada 603R. She is remembered around here for the calf vigor that she brought to the table. You had to be quick with the calf cart after birth, otherwise catching them to get a weight and tag was dang near impossible.

**26 TAC H399**

REG NA  
DOB  
TATTOO H399

BASIN PAYWEIGHT 1682  
**CONNEALY 1682 3657**  
POLLETTA OF CONANGA 3657

MULTI SIRE GROUP (TK ANGUS)  
**TAC MADGE C200**  
TK MADGE RJM T154

BASIN PAYWEIGHT 006S  
21AR O LASS 7017  
CONNEALY CONFIDENCE 0100  
POLLY OF CONANGA 721

**ACT BW**  
65

CALVING EASE ★★★

| DAM INFO |    | AGE: 7 | MATURE WT: 1672 |     |     |    |    |    |     |     |     |     |     |     |     |
|----------|----|--------|-----------------|-----|-----|----|----|----|-----|-----|-----|-----|-----|-----|-----|
| CED      | BW | WW     | YW              | MLK | SEN | CW | MB | RE | FAT | \$M | \$W | \$F | \$G | \$B | \$C |
|          |    |        |                 |     |     |    |    |    |     |     |     |     |     |     |     |

**100% ANGUS**

|                |      |                |      |
|----------------|------|----------------|------|
| <b>ACT IMF</b> | 3.37 | <b>ACT REA</b> | 14.4 |
|----------------|------|----------------|------|

Another 1538 out a TK Angus cow we purchased. He is a purebred, but sells as commercial. Heifer bull candidate.



# TWO-YEAR-OLD Sim Angus Bulls

## ATA CATTLE



LOT 27



LOT 28



CDI PERSPECTIVE 238A - SIRE OF LOT 28

Find us on: **facebook**

**TACATTLE.COM**

**27 TAC ARMOUR H29**

REG 4021939  
DOB 2/22/20  
TATTOO H29  
CALVING EASE ★★

|                            |                            |        |
|----------------------------|----------------------------|--------|
| MC CUMBER TITANIUM 5005    | MC CUMBER TITANIUM 3127    | ACT BW |
| MC CUMBER ARMOUR 7148      | MISS WIX 7126 OF MC CUMBER | 57     |
| MISS WIX 2003 OF MC CUMBER | O C C TREMENDOUS 619T      |        |
| FLYING V TRANSFORMER       | MISS WIX 2022 HC MC CUMBER |        |
| TAC MS GUNNER F195-W636    | V A R GENERATION 2100      |        |
| MLC MS GUNNER W636         | FLYING V MISS PRIDE 95Z    |        |
|                            | TNT GUNNER N208            |        |
|                            | SSR MISS LEGACY R38        |        |

DAM INFO AGE: 4 MATURE WT: 1275

| CE   | BW  | WW   | YW    | MCE | MLK  | MWW  | ST   | DOC  | CW   | YG    | MB   | BF     | RE   | SAPI  | STI  |
|------|-----|------|-------|-----|------|------|------|------|------|-------|------|--------|------|-------|------|
| 12.3 | 0.7 | 74.0 | 114.0 | 6.2 | 20.9 | 62.0 | 14.6 | 11.5 | 43.7 | -0.05 | 0.38 | -0.018 | 0.47 | 127.7 | 75.0 |
| 50%  | 60% | 60%  | 55%   | 65% | 70%  | 45%  | 55%  | 60%  | 15%  | 95%   | 40%  | 85%    | 85%  | 55%   | 65%  |

1/4 SM 3/4 AN ACT IMF (RATIO) 2.66 ACT REA 11.5

**BLACK.** Leading the Simmental division is one heck of a bull. Has the look, power, and rib to be a bull your neighbor's envy. True cow maker.

**28 TAC PERSPECTIVE H150**

REG 3861379  
DOB 3/4/20  
TATTOO H150  
CALVING EASE ★★

|                        |                      |                |
|------------------------|----------------------|----------------|
| HOOK'S EXPECTATION 36X | GW PREDESTINED 701T  | ACT BW (RATIO) |
| CDI PERSPECTIVE 238A   | HOOKS MIKA 141M      | 80 (99)        |
| CDI MS TRUMP 101Y      | NF TRUMP S582        | WW RATIO       |
| MR HOC BROKER          | CDI MS TOP GUN 5U    | 97             |
| TAC MS BROKER E2       | SVF STEEL FORCE S701 | YW RATIO       |
| TAC MS 1086            | JM BF H25            | 101            |

DAM INFO AGE: 5 MATURE WT: 1596

| CE   | BW   | WW   | YW    | MCE | MLK  | MWW  | ST   | DOC | CW   | YG    | MB   | BF     | RE   | SAPI  | STI  |
|------|------|------|-------|-----|------|------|------|-----|------|-------|------|--------|------|-------|------|
| 12.5 | -0.2 | 75.0 | 113.1 | 6.0 | 21.6 | 59.0 | 13.8 | 6.7 | 25.3 | -0.23 | 0.20 | -0.050 | 0.55 | 122.9 | 75.5 |
| 50%  | 40%  | 55%  | 60%   | 65% | 65%  | 60%  | 65%  | 95% | 75%  | 55%   | 75%  | 50%    | 70%  | 65%   | 65%  |

3/4 SM 1/4 AN ACT IMF (RATIO) 2.67 (105) ACT REA (RATIO) 14.8 (105)

**BLACK.** Half brother sells as lot 79. It is hard to make one this powered up and still be as soft and deep flanked as this one. E2 has put one in the sale every year. She just needs to have a few heifers for us and we will be set.





TAC SURETY F223 - SIRE OF LOTS 30-32



LOT 32

**30 TAC SURETY H401**

REG 3861373  
DOB 3/28/20  
TATTOO H401  
CALVING EASE ★★★★★

TAC SECURITY D56  
TAC SURETY F223  
TAC AQUILA C308-456  
HOOK'S XAVIER 14X  
UC CROCUS C230 BLK  
UC CROCUS X017 BLK

5L BLOCKADE 2218-30B  
LAZY MS BRIER 494-976  
GP WALLACE 016  
RIDGE AQUILA 836-456  
MCC DAYBREAK  
HOOKS PATTI 3P  
ELLINGSON LEGACY M229  
U266

ACT BW (RATIO) 62 (74)  
WW RATIO 90  
YW RATIO 88

DAM INFO AGE: 7 MATURE WT: 1320

| CE   | BW   | WW   | YW   | MCE | MLK  | MWW  | ST   | DOC | CW   | YG    | MB   | BF     | RE   | SAPI  | STI  |
|------|------|------|------|-----|------|------|------|-----|------|-------|------|--------|------|-------|------|
| 16.3 | -4.9 | 53.5 | 77.8 | 8.8 | 23.1 | 49.8 | 15.2 | 12  | 15.4 | -0.19 | 0.30 | -0.024 | 0.50 | 131.7 | 69.5 |
| 10%  | 2%   | 99%  | 99%  | 20% | 50%  | 95%  | 50%  | 55% | 95%  | 65%   | 55%  | 75%    | 80%  | 50%   | 85%  |

1/4 SM 1/2 AR 3/16 AN 1/16 CS ACT IMF (RATIO) 2.52 (101) ACT REA (RATIO) 13.0 (95)

BLACK. Simmental heifer bull prospect.

**32 TAC SURETY H251**

REG 3861383  
DOB 3/14/20  
TATTOO H251  
CALVING EASE ★★

TAC SECURITY D56  
TAC SURETY F223  
TAC AQUILA C308-456  
MR CCF 20-20  
TAC SHEZA MOVIN E170  
TAC SHEZA MOVIN A130

5L BLOCKADE 2218-30B  
LAZY MS BRIER 494-976  
GP WALLACE 016  
RIDGE AQUILA 836-456  
MR CCF VISION  
HTP SVF DEW THE STROKE  
LMF MOVIN FORWARD  
THSF SHEZA DREAM S623

ACT BW (RATIO) 78 (97)  
WW RATIO 91  
YW RATIO 94

DAM INFO AGE: 5 MATURE WT: 1200

| CE   | BW   | WW   | YW   | MCE | MLK  | MWW  | ST   | DOC  | CW   | YG    | MB   | BF     | RE   | SAPI  | STI  |     |
|------|------|------|------|-----|------|------|------|------|------|-------|------|--------|------|-------|------|-----|
| 12.6 | -1.4 | 61.9 | 89.2 | 5.9 | 18.5 | 49.4 | 16.4 | 12.3 | 20.7 | -0.20 | 0.10 | -0.046 | 0.41 | 119.0 | 65.9 |     |
| 50%  | 20%  | 95%  | 95%  | 70% | 85%  | 95%  | 95%  | 35%  | 50%  | 85%   | 60%  | 90%    | 50%  | 90%   | 75%  | 95% |

1/2 SM 1/2 AR ACT IMF (RATIO) 1.95 (77) ACT REA (RATIO) 11.7 (84)

RED. The 20-20 cattle are in high demand and for good reason, they work. Backed by Sheza Movin and Aquilla 456. Long bodied and excellent footed.



LOT 31

**33 TAC UNO MAS H58**

REG 3861384  
DOB 2/26/20  
TATTOO H58  
CALVING EASE ★★★

WLE UNO MAS X549  
HPF UNO MAS 4D  
TYLERTOWN MELTED  
RYMO MR REDCOAT R33Y  
TAC RED COAT F165-B6  
TAC MS REDEMPTION B6

CNS DREAM ON L186  
SHAWNEE MISS 770P  
W/C WIDE TRACK 694Y  
FBFS YOU MELT ME 128Y  
GW RED COAT 099TS  
RYMO MISS T2 333N

ACT BW (RATIO) 72 (93)  
WW RATIO 94  
YW RATIO 100

DAM INFO AGE: 4 MATURE WT: 1100

| CE   | BW   | WW   | YW   | MCE | MLK  | MWW  | ST   | DOC  | CW   | YG    | MB   | BF     | RE   | SAPI  | STI  |
|------|------|------|------|-----|------|------|------|------|------|-------|------|--------|------|-------|------|
| 13.8 | -1.9 | 57.6 | 86.2 | 6.9 | 20.5 | 49.2 | 12.4 | 11.8 | 12.9 | -0.40 | 0.14 | -0.091 | 0.59 | 116.0 | 66.6 |
| 35%  | 15%  | 99%  | 99%  | 50% | 75%  | 95%  | 80%  | 55%  | 99%  | 10%   | 85%  | 4%     | 65%  | 80%   | 95%  |

3/4 SM 1/4 AR ACT IMF (RATIO) 2.64 (103) ACT REA (RATIO) 14.3 (101)

RED. The Uno Mas females are great cows for us. They are 1300 lb mature cows that milk heavy, hold condition, and breed back on time. Let him loose on a set of heifers or cows and keep every female.

**31 TAC SURETY H463**

REG 3861397  
DOB 4/6/20  
TATTOO H463  
CALVING EASE ★★★★★

TAC SECURITY D56  
TAC SURETY F223  
TAC AQUILA C308-456  
WS A STEP UP X27  
ROCHE LE821  
LE EVER READY Y-932

5L BLOCKADE 2218-30B  
LAZY MS BRIER 494-976  
GP WALLACE 016  
RIDGE AQUILA 836-456  
SS EBONY'S GRANDMASTER  
WS MS MACHO U38  
TNT EVER READY R232  
LE GOLD TWISTER W-425

ACT BW (RATIO) 63 (74)  
WW RATIO 94  
YW RATIO 89

DAM INFO AGE: 9 MATURE WT: 1550

| CE   | BW   | WW   | YW   | MCE | MLK  | MWW  | ST   | DOC  | CW   | YG    | MB   | BF     | RE   | SAPI  | STI  |
|------|------|------|------|-----|------|------|------|------|------|-------|------|--------|------|-------|------|
| 15.8 | -4.4 | 54.4 | 72.5 | 6.7 | 24.6 | 51.8 | 15.2 | 11.4 | 11.9 | -0.30 | 0.12 | -0.060 | 0.50 | 123.9 | 66.6 |
| 15%  | 3%   | 99%  | 99%  | 55% | 35%  | 90%  | 50%  | 60%  | 99%  | 30%   | 90%  | 35%    | 80%  | 65%   | 95%  |

1/2 SM 1/2 AR ACT IMF (RATIO) 1.90 (77) ACT REA (RATIO) 11.9 (89)

RED. Heifer bull candidate backed by an impressive baldy Step Up cow. He may make those red baldy females that everyone loves.





HOOKS XPECTATION 36X - SIRE OF LOT 34



FF PEARL SNAP 770 - SIRE OF LOTS 36-37

Don't miss these Pearl Snap two-year olds that will leave behind a great set of feeder steers or replacements.

**34 TAC XPECTATION H179**

REG 3861855  
DOB 3/2/20  
TATTOO H179  
CALVING EASE ★★

GW PREDESTINED 701T  
**HOOK'S XPECTATION 36X**  
HOOKS MIKA 141M

SFG SANTA FE C558  
**TAC MS BEYOND F270-384A**  
KGH MISS BEYOND 384A

G A R PREDESTINED  
GW MISS LUCKY STRIKE 363  
HOOKS SHEAR FORCE 38K  
HOOKS IRISH MAXINE 29K  
CCR SANTA FE 9349Z  
SFG MAGGIE Y27  
GCF BEYOND  
KGH 600 911J

**ACT BW (RATIO) 72 (98)**  
**WW RATIO 94**  
**YW RATIO 93**

**DAM INFO** AGE: 4 MATURE WT: 1250

| CE   | BW   | WW   | YW   | MCE | MLK  | MWW  | ST   | DOC  | CW   | YG    | MB   | BF     | RE   | SAPI  | STI  |
|------|------|------|------|-----|------|------|------|------|------|-------|------|--------|------|-------|------|
| 11.6 | -0.2 | 69.5 | 97.1 | 5.5 | 27.4 | 62.1 | 21.1 | 13.7 | 21.7 | -0.38 | 0.20 | -0.079 | 0.73 | 144.6 | 77.4 |
| 40%  | 20%  | 85%  | 90%  | 55% | 25%  | 50%  | 5%   | 25%  | 80%  | 75%   | 30%  | 75%    | 85%  | 25%   | 55%  |

**PB SM** **ACT IMF (RATIO) 1.15 (62)** **ACT REA (RATIO) 12.6 (90)**

**RED.** Maternal granddam is a 600U milking machine. Have several daughters and granddaughters retained in herd. Throw Xpection and Santa Fe in there and don't know how you could go wrong.

**36 TAC PEARL SNAP H156**

REG 4398105  
DOB 3/4/20  
TATTOO H156  
CALVING EASE ★★

LT RUSHMOHRE 8060 PLD  
**FF PEARL SNAP 770**  
BUTLER MS TURTON

TAC ENCLOSURE D169  
**TAC TAMARA F180**  
TAC MS TAMARA D189

LT RIO BRAVO 3181P  
LT BRENDA'S EASE 3055PLD  
TR PZC MR TURTON 0794 ET  
M&M MS STEALTH 0102  
5L BLOCKADE 2218-30B  
RIDGE AQUILA 836-456  
BIEBER ROLLIN DEEP Y118  
VF TAMARA A196-545

**ACT BW (RATIO) 73 (105)**  
**WW RATIO 104**  
**YW RATIO 106**  
**WDA 3.16**

**DAM INFO** AGE: 4 MPPA: 103 MATURE WT: 1134

| PRO | S   | HB  | GM  | CED | BW  | WW  | YW  | MLK | ME  | HP  | CEM | ST   | MB    | YG  | CW   | REA   | BF |
|-----|-----|-----|-----|-----|-----|-----|-----|-----|-----|-----|-----|------|-------|-----|------|-------|----|
| 26  | 12  | 14  | 13  | 0.6 | 70  | 99  | 25  | -4  | 10  | 3   | 10  | 0.04 | -0.28 | 30  | 0.74 | -0.05 |    |
| 99% | 98% | 92% | 48% | 89% | 16% | 44% | 49% | 20% | 69% | 98% | 94% | 99%  | 1%    | 22% | 1%   | 1%    |    |

**50% AR 50% CH** **ACT IMF (RATIO) 2.03 (79)** **ACT REA (RATIO) 13.33 (99)**

**35 TAC UNO MAS H475**

REG 3861396  
DOB 4/8/20  
TATTOO H475  
CALVING EASE ★★

WLE UNO MAS X549  
**HPF UNO MAS 4D**  
TYLERTOWN MELTED

COMMERCIAL RED ANGUS  
**X461**  
COMMERCIAL RED ANGUS

CNS DREAM ON L186  
SHAWNEE MISS 770P  
W/C WIDE TRACK 694Y  
FBFS YOU MELT ME 128Y

**ACT BW (RATIO) 91 (108)**  
**WW RATIO 95**  
**YW RATIO 91**

**DAM INFO** AGE: 9 MATURE WT:

| CE   | BW  | WW   | YW   | MCE | MLK  | MWW  | ST  | DOC  | CW  | YG    | MB   | BF     | RE   | SAPI | STI  |
|------|-----|------|------|-----|------|------|-----|------|-----|-------|------|--------|------|------|------|
| 10.6 | 0.7 | 56.4 | 78.0 | 4.4 | 23.3 | 51.5 | 9.4 | 12.3 | 7.2 | -0.26 | 0.10 | -0.072 | 0.23 | 95.9 | 60.2 |
| 75%  | 60% | 99%  | 99%  | 90% | 50%  | 90%  | 95% | 50%  | 99% | 45%   | 90%  | 15%    | 99%  | 99%  | 99%  |

**1/2 SM 1/2 AR** **ACT IMF (RATIO) 1.94 (79)** **ACT REA (RATIO) 11.7 (87)**

**RED.** Red cow bull that will widen them up and fix them at the ground. Power bull.



LOT 37

**37 TAC PEARL SNAP H213**

REG 4570797  
DOB 3/9/20  
TATTOO H213  
CALVING EASE ★★

LT RUSHMOHRE 8060 PLD  
**FF PEARL SNAP 770**  
BUTLER MS TURTON

BADLANDS NET WORTH 23U  
**3SCC BRANDY Y45**  
3SCC BRANDY S168

LT RIO BRAVO 3181P  
LT BRENDA'S EASE 3055PLD  
TR PZC MR TURTON 0794 ET  
M&M MS STEALTH 0102  
PFFR SHAQ 607  
BADLANDS MEDORA 406  
K F BANDOLIER 814  
RRM MISS BASIN 0545 4008

**ACT BW 89**  
**WDA 3.16**

**DAM INFO** AGE: 12 MPPA: 97

| PRO | S   | HB  | GM  | CED | BW  | WW  | YW  | MLK | ME  | HP  | CEM | ST   | MB    | YG  | CW   | REA   | BF |
|-----|-----|-----|-----|-----|-----|-----|-----|-----|-----|-----|-----|------|-------|-----|------|-------|----|
| 58  | 45  | 13  | 10  | 2.8 | 68  | 87  | 20  | -13 | 11  | 3   | 13  | 0.22 | -0.33 | 15  | 0.64 | -0.06 |    |
| 92% | 67% | 92% | 86% | 99% | 20% | 69% | 90% | 7%  | 44% | 98% | 77% | 92%  | 1%    | 78% | 1%   | 1%    |    |

**50% AR 50% CH** **ACT IMF 2.63** **ACT REA (RATIO) 14.0**



# 18-MONTH OLD Red Angus Bulls



# ATA CATTLE

**38 TAC BRICK HOUSE H721**

REG 4565601  
DOB 8/29/20  
TATTOO H721  
CALVING EASE ★★

BASIN PAYWEIGHT 1682  
CONNEALY 1682 3657  
POLLETTA OF CONANGA 3657

5L BLOCKADE 2218-30B  
TAC VERNA E23  
3SCC VERNA B47

BASIN PAYWEIGHT 006S  
21AR O LASS 7017  
CONNEALY CONFIDENCE 0100  
POLLY OF CONANGA 721  
5L DEFENDER 560-30Z  
5L OPAL 656-2218  
BIEBER HARD DRIVE Y120  
3SCC VERNA U105

ACT BW (RATIO) 65 (86)  
WW RATIO 97  
YW RATIO 99  
WDA 2.73

DAM INFO AGE: 5 MPPA: 99 MATURE WT: 1245

| PRO | S   | HB  | GM  | CED  | BW  | WW  | YW  | MLK | ME  | HP  | CEM | ST   | MB   | YG | CW   | REA  | BF |
|-----|-----|-----|-----|------|-----|-----|-----|-----|-----|-----|-----|------|------|----|------|------|----|
| 89  | 33  | 56  | 16  | -3.4 | 67  | 108 | 20  | 6   | 10  | 8   | 12  | 0.55 | 0.08 | 41 | 0.32 | 0.02 |    |
| 50% | 85% | 13% | 10% | 21%  | 25% | 25% | 90% | 69% | 66% | 21% | 83% | 20%  | 60%  | 4% | 13%  | 54%  |    |

100% AR      ADJ IMF (RATIO) 2.81 (0)      ADJ REA (RATIO) 12.41 (0)

Here is a bull that is as stout and sound as they get. He has dual purpose written all over him. As you look through his pedigree you will find Verna, 0100, Payweight, and Blockade. He is a true herd bull that is very balanced in all traits. Red carrier.



**39 TAC HEAVY WEIGHT H742**

REG 4565603  
DOB 9/6/20  
TATTOO H742  
CALVING EASE ★★

BASIN PAYWEIGHT 1682  
CONNEALY 1682 3657  
POLLETTA OF CONANGA 3657

TAC WALLACE B112  
TAC MS CASIE D434  
TAC CASIE A21-21S

BASIN PAYWEIGHT 006S  
21AR O LASS 7017  
CONNEALY CONFIDENCE 0100  
POLLY OF CONANGA 721  
GP WALLACE 016  
3SCC BRANDY Y112  
3SCC HOBO X05  
HR CASIE 21S

ACT BW (RATIO) 88 (115)  
WW RATIO 110  
YW RATIO 110  
WDA 3.06

DAM INFO AGE: 6 MPPA: 100 MATURE WT: 1645

| PRO | S   | HB  | GM  | CED  | BW  | WW  | YW  | MLK | ME  | HP  | CEM | ST   | MB   | YG  | CW   | REA  | BF |
|-----|-----|-----|-----|------|-----|-----|-----|-----|-----|-----|-----|------|------|-----|------|------|----|
| 74  | 49  | 25  | 11  | -0.1 | 66  | 106 | 20  | 3   | 9   | 7   | 15  | 0.25 | 0.13 | 29  | 0.08 | 0.03 |    |
| 76% | 58% | 76% | 75% | 81%  | 25% | 27% | 89% | 50% | 78% | 44% | 58% | 88%  | 85%  | 27% | 59%  | 76%  |    |

100% AR      ADJ IMF (RATIO) 3.52 (0)      ADJ REA (RATIO) 15.34 (0)

Performance at its finest. These two haven't skipped a beat from day one. Payweight 1583 has brought us a super set of calves to date, and we are excited to turn them red. The fall calves had a pink eye bug run through them on stalks last winter as calves. Lot 38 does have a speck of frost in his eye but can see just fine.

**40 TAC PAYDAY H737**

REG 4565597  
DOB 9/6/20  
TATTOO H737  
CALVING EASE ★★

BASIN PAYWEIGHT 1682  
CONNEALY 1682 3657  
POLLETTA OF CONANGA 3657

BIEBER ROLLIN DEEP Y118  
TAC TAMARA D166  
VF TAMARA A196-545

BASIN PAYWEIGHT 006S  
21AR O LASS 7017  
CONNEALY CONFIDENCE 0100  
POLLY OF CONANGA 721  
BIEBER ROOSEVELT W384  
BIEBER TILLY 399W  
LARSON MASTERPIECE 009  
LARSON TAMARA 545-556

ACT BW (RATIO) 85 (111)  
WW RATIO 107  
YW RATIO 108  
WDA 3.01

DAM INFO AGE: 6 MPPA: 104 MATURE WT: 1670

| PRO | S   | HB  | GM  | CED  | BW  | WW  | YW  | MLK | ME  | HP  | CEM | ST   | MB   | YG  | CW   | REA  | BF |
|-----|-----|-----|-----|------|-----|-----|-----|-----|-----|-----|-----|------|------|-----|------|------|----|
| 70  | 34  | 36  | 12  | -0.6 | 71  | 115 | 27  | 9   | 12  | 7   | 12  | 0.41 | 0.19 | 34  | 0.13 | 0.05 |    |
| 81% | 85% | 51% | 58% | 73%  | 13% | 13% | 30% | 85% | 32% | 39% | 84% | 48%  | 97%  | 12% | 47%  | 97%  |    |

100% AR      ADJ IMF (RATIO) 4.97 (0)      ADJ REA (RATIO) 11.84 (0)

### 41 TAC FRED H738

REG 4567129  
DOB 9/6/20  
TATTOO H738  
CALVING EASE

SPUR GROUND POUNDER Y114  
**TAC FRED A25**  
2RJL SIERRA Y725

NORTHERN IMPROVEMENT 4480 GF  
**TAC MS JUANADA D371**  
O C C JUANADA 603R

BECKTON NEBULA P P707  
BECKTON FIREFLY S504 LN  
UBAR HIGH CAPACITY 224  
3SCC SIERRA U316  
TC STOCKMAN 365  
BLACKCAP OF R R 5367  
O C C GLORY 950G  
O C C JUANADA 856F

**ACT BW** 78  
**WDA** 2.48

**DAM INFO** AGE: 6 MPPA: MATURE WT: 1286

| PRO | S   | HB  | GM  | CED  | BW  | WW  | YW  | MLK | ME  | HP  | CEM | ST   | MB   | YG  | CW    | REA  | BF |
|-----|-----|-----|-----|------|-----|-----|-----|-----|-----|-----|-----|------|------|-----|-------|------|----|
| 45  | 22  | 23  | 13  | -2.0 | 57  | 83  | 22  | -3  | 6   | 4   | 11  | 0.44 | 0.16 | 6   | -0.14 | 0.01 |    |
| 98% | 95% | 79% | 50% | 47%  | 60% | 75% | 81% | 23% | 98% | 96% | 92% | 41%  | 92%  | 95% | 95%   | 30%  |    |

**100% AR**      **ADJ IMF (RATIO)** 2.89 (0)      **ADJ REA (RATIO)** 11.54 (0)

A heifer bull going back on a Northern Improvement Juanada dam. Feed yard or replacement pen - he checks both boxes.

### 42 TAC REBOURNE H775

REG 4567131  
DOB 10/18/20  
TATTOO H775  
CALVING EASE

5L BOURNE 117-48A  
**TAC REBOURNE F105 ET**  
SDCC MARIGOLD 501W

LANDMARK OBJECTIVE 351  
**D 351 DARCEY A3125**  
D 8193 DARCEY X0263

5L ADVANTAGE 3267-221Y  
5L ROXIE 854-117  
RED HILL B571 JULIAN 84S  
BUF CRK MARIGOLD T132  
RIVER HILLS OBJECTIVE T199  
LANDMARK ENCHANTRESS 351  
D 50 GOLD MINE U8193  
D 6134 MISS DIVIDEND K0148

**ACT BW** 80  
**WDA** 2.59

**DAM INFO** AGE: 9 MPPA: MATURE WT: 1600

| PRO | S   | HB  | GM  | CED  | BW  | WW  | YW  | MLK | ME  | HP  | CEM | ST   | MB   | YG  | CW   | REA  | BF  |
|-----|-----|-----|-----|------|-----|-----|-----|-----|-----|-----|-----|------|------|-----|------|------|-----|
| -31 | -47 | 16  | 12  | -2.2 | 61  | 85  | 23  | -2  | 7   | 2   | 0   | 0.36 | 0.00 | 3   | 0.13 | 0.02 |     |
| 99% | 99% | 89% | 53% | 41%  | 47% | 73% | 74% | 25% | 96% | 99% | 99% | 99%  | 61%  | 18% | 97%  | 47%  | 48% |

**100% AR**      **ADJ IMF (RATIO)** 2.31 (0)      **ADJ REA (RATIO)** 11.01 (0)

Rebourne son backed by the marbling phenom, Objective. Heifer bull.

### 43 TAC ROLLIN DOUGH H703

REG 4565599  
DOB 9/3/20  
TATTOO H703  
CALVING EASE

BIEBER ROOSEVELT W384  
**BIEBER ROLLIN DEEP Y118**  
BIEBER TILLY 399W

3SCC EXT W35  
**TAC CASIE 1R0-21S**  
HR CASIE 21S

BIEBER ROUGH RIDER 10712  
BIEBER SHEBA 9602  
BIEBER BOONE 8000  
BIEBER TILLY 303S  
BASIN EXT 1925  
SRA MISS ARTIC 235  
HR SPIKE 4R94  
HR MY 21N

**ACT BW (RATIO)** 72 (94)  
**WW RATIO** 92  
**YW RATIO** 95  
**WDA** 2.69

**DAM INFO** AGE: 12 MPPA: 92 MATURE WT: 1700

| PRO | S   | HB  | GM  | CED  | BW  | WW  | YW  | MLK | ME  | HP  | CEM | ST   | MB   | YG  | CW   | REA  | BF |
|-----|-----|-----|-----|------|-----|-----|-----|-----|-----|-----|-----|------|------|-----|------|------|----|
| 94  | 71  | 23  | 11  | -2.2 | 55  | 87  | 21  | 4   | 12  | 8   | 18  | 0.31 | 0.16 | 25  | 0.19 | 0.06 |    |
| 40% | 16% | 78% | 76% | 42%  | 69% | 70% | 88% | 59% | 30% | 37% | 15% | 75%  | 93%  | 40% | 34%  | 99%  |    |

**100% AR**      **ADJ IMF (RATIO)** 1.71 (0)      **ADJ REA (RATIO)** 13.59 (0)

Rollin Deep cattle grow like weeds, have carcass, and make great cows. Bieber Tilly is one of the best in the breed for phenotype and functionality. His mother, Casie, is no stranger to our herd with 9 daughters in production while turning 11 this spring. Basin EXT was a true cow maker.

### 44 TAC REBOURNE H762

REG 4565607  
DOB 10/20/20  
TATTOO H762  
CALVING EASE

5L BOURNE 117-48A  
**TAC REBOURNE F105 ET**  
SDCC MARIGOLD 501W

TAC A191  
**TAC PRINCESS ANN E27**  
TAC PRINCESS ANN C77

5L ADVANTAGE 3267-221Y  
5L ROXIE 854-117  
RED HILL B571 JULIAN 84S  
BUF CRK MARIGOLD T132  
LSF TAKEOVER 9943W  
TBLC MISS 605 CHEYENNE 191  
REDHILL B571 JULIAN 1W  
LARSON PRINCESS ANN 054-409

**ACT BW (RATIO)** 73 (97)  
**WW RATIO** 101  
**YW RATIO** 97  
**WDA** 2.62

**DAM INFO** AGE: 5 MPPA: 101 MATURE WT: 1230

| PRO | S   | HB  | GM  | CED  | BW  | WW  | YW  | MLK | ME  | HP  | CEM | ST   | MB   | YG  | CW   | REA  | BF |
|-----|-----|-----|-----|------|-----|-----|-----|-----|-----|-----|-----|------|------|-----|------|------|----|
| 69  | 41  | 28  | 13  | -2.6 | 66  | 102 | 29  | 0   | 13  | 5   | 13  | 0.43 | 0.06 | 17  | 0.21 | 0.04 |    |
| 82% | 74% | 69% | 48% | 33%  | 25% | 36% | 19% | 35% | 18% | 83% | 79% | 43%  | 47%  | 73% | 30%  | 88%  |    |

**100% AR**      **ADJ IMF (RATIO)** 2.09 (0)      **ADJ REA (RATIO)** 13.55 (0)

Heifer bull backed by Princess Anne and A191. Proven growth and calving ease here.

### 45 TAC UNCHARTED H708

REG NA  
DOB 9/15/20  
TATTOO H708  
CALVING EASE

CCC WC RESOURCE 417 P  
**WC UNCHARTED T328**  
WC BRENDA 4035 P

DCR MR SOLUTION W13  
**TAC MS C20**

LT RUSHMORE 8060 PLD  
WC CCC BLUE GIRL 1528 P  
WC CAPITAL GAIN 2220 P ET  
WC BRENDA 2005 P

**ACT BW** 76

**DAM INFO** AGE: MPPA: MATURE WT:

| PRO | S | HB | GM | CED | BW | WW | YW | MLK | ME | HP | CEM | ST | MB | YG | CW | REA | BF |
|-----|---|----|----|-----|----|----|----|-----|----|----|-----|----|----|----|----|-----|----|
|     |   |    |    |     |    |    |    |     |    |    |     |    |    |    |    |     |    |

**25% AR 75% CH**      **ACT IMF** 1.92      **ACT REA** 16.8

Mellow yellow bull here that will add frame and pounds. Sells as commercial.



### 46 TAC LOCKDOWN H700

REG 4021940  
DOB 8/26/20  
TATTOO H700  
CALVING EASE

REMINGTON LOCK N LOAD54U  
**W/C LOCK DOWN 206Z**  
G C F MISS NEW LEVELR206

BF STEEL FORCE JOY 235X  
**BF STEEL F JOY A316**  
5128

REMINGTON ON TARGET 2S  
BAR15 MISS KNIGHT78E-51G  
IRONWOOD NEW LEVEL  
M A F EILEEN 0113  
SVF STEEL FORCE S701  
SS PDRIVE RHODA

**ACT BW** 76

**DAM INFO** AGE: 9 MATURE WT: 1670

| CE   | BW   | WW   | YW    | MCE | MLK  | MWW  | ST  | DOC | CW   | YG    | MB   | BF     | RE   | SAPI  | STI  |
|------|------|------|-------|-----|------|------|-----|-----|------|-------|------|--------|------|-------|------|
| 12.8 | -0.3 | 71.9 | 113.3 | 6.8 | 22.9 | 58.8 | 9.6 | 9.9 | 37.3 | -0.11 | 0.21 | -0.025 | 0.52 | 116.1 | 73.1 |
| 45%  | 40%  | 65%  | 60%   | 50% | 50%  | 60%  | 95% | 80% | 30%  | 85%   | 70%  | 75%    | 75%  | 80%   | 75%  |

**1/2 SM 1/2 AN**      **ACT IMF (RATIO)** (0)      **ACT REA (RATIO)** (0)

BLACK. Lock Down cattle just don't go out of style. The calving ease, growth, and style they possess is hard to fault. Fall aged bull will cover a big group of cows and pay for himself quickly.



# YEARLING Red Angus Bulls



**LOT 47**



**C-BAR LEVERAGE 8115F**  
SIRE OF LOTS 47-48



**TAC DRIFTER H10 - MATERNAL BROTHER OF LOT 47**

**47**

**TAC CONSEQUENCE J383**



REG  
**4565323**  
DOB  
**3/30/21**  
TATTOO  
**J383**

SPUR FRANCHISE OF GARTON  
**C-BAR LEVERAGE 8115F**  
ADHM STONY 503C  
  
TAC SECURITY D56  
**TAC MS VERNA F66 ET**  
3SCC VERNA B47

SPUR FRANCHISE 7070  
H & H IRENE LASS 0135  
LSF SAGA 1040Y  
C-BAR MS STONY A302  
5L BLOCKADE 2218-30B  
LAZYJ MS BRIER 494-976  
BIEBER HARD DRIVE Y120  
3SCC VERNA U105

**ACT BW (RATIO)**  
**79 (107)**  
**ADJ WW (RATIO)**  
**786 (117)**  
**ADJ YW (RATIO)**  
**1229 (105)**  
**WDA**  
**3.26**

| CALVING EASE   |     | DAM INFO |     |      |     |     |     |     |     |                                  |     |                                    |      |     | AGE: 4 |      | MPPA: 110 |  | MATURE WT: 1262 |  |
|----------------|-----|----------|-----|------|-----|-----|-----|-----|-----|----------------------------------|-----|------------------------------------|------|-----|--------|------|-----------|--|-----------------|--|
| PRO            | S   | HB       | GM  | CED  | BW  | WW  | YW  | MLK | ME  | HP                               | CEM | ST                                 | MB   | YG  | CW     | REA  | BF        |  |                 |  |
| 121            | 58  | 63       | 15  | -2.3 | 70  | 112 | 30  | 6   | 10  | 9                                | 16  | 0.64                               | 0.01 | 34  | 0.48   | 0.03 |           |  |                 |  |
| 9%             | 39% | 7%       | 19% | 40%  | 16% | 17% | 10% | 69% | 67% | 14%                              | 47% | 9%                                 | 24%  | 12% | 4%     | 69%  |           |  |                 |  |
| <b>100% AR</b> |     |          |     |      |     |     |     |     |     | <b>ADJ IMF (RATIO)</b> 2.09 (78) |     | <b>ADJ REA (RATIO)</b> 15.24 (114) |      |     |        |      |           |  |                 |  |

F66 did it again. Her first natural calf Drifter was our high seller last spring and now she has a Leverage that is just as exciting. The name Consequence fit perfectly. There are always tradeoffs in breeding cattle. Try to take traits that are important to your program and balance them in an attractive package. Well here is the consequence of those decisions.



**LOT 48**

**48 TAC LEVERAGE J329**

REG 4565313  
DOB 3/22/21  
TATTOO J329  
CALVING EASE ★★

SPUR FRANCHISE OF GARTON  
**C-BAR LEVERAGE 8115F**  
ADHM STONY 503C

TAC WALLACE B112  
**TAC JUDY E448**  
3SCC JUDY Y360

SPUR FRANCHISE 7070  
H & H IRENE LASS 0135  
LSF SAGA 1040Y  
C-BAR MS STONY A302  
GP WALLACE 016  
3SCC BRANDY Y112  
BHR GOLDEN BOY 854  
MISS PREMIUM J3560

|                |            |
|----------------|------------|
| ACT BW (RATIO) | 72 (96)    |
| ADJ WW (RATIO) | 760 (114)  |
| ADJ YW (RATIO) | 1299 (111) |
| WDA            | 3.52       |

DAM INFO AGE: 5 MPPA: 108 MATURE WT: 1360

| PRO | S   | HB  | GM  | CED  | BW  | WW  | YW | MLK | ME  | HP  | CEM | ST   | MB    | YG  | CW   | REA  | BF |
|-----|-----|-----|-----|------|-----|-----|----|-----|-----|-----|-----|------|-------|-----|------|------|----|
| 83  | 50  | 33  | 12  | -1.2 | 69  | 111 | 30 | 9   | 9   | 7   | 16  | 0.29 | -0.06 | 24  | 0.50 | 0.01 |    |
| 60% | 56% | 58% | 63% | 62%  | 17% | 19% | 9% | 84% | 78% | 48% | 41% | 80%  | 5%    | 46% | 3%   | 45%  |    |

**100% AR** ADJ IMF (RATIO) 2.31 (85) ADJ REA (RATIO) 15.31 (114)

Posted a 114 weaning ratio with a 111 yearling ratio. Impressive growth bull that is even more intriguing when you start looking at his carcass traits.



**LOT 49**

**49 TAC QUARTERBACK J130**

REG 4565245  
DOB 3/2/21  
TATTOO J130  
CALVING EASE ★★

PIE STOCKMAN 4051  
**PIE QUARTERBACK 789**  
PIE RUBY 520

BROWN RED OAK A7639  
**TAC PRINCESS ANN D122**  
VF PRINCESS ANN A236-054

LSF SAGA 1040Y  
PIE LAKOTA 046  
PIE ONE OF A KIND 352  
PIE RUBY 381  
HUST CHIEF SEQUOYA R336  
BROWN MS P707 Y7686  
LJC MISSION STATEMENT P27  
LARSON PRINCESS ANN 054-409

|                |            |
|----------------|------------|
| ACT BW (RATIO) | 72 (94)    |
| ADJ WW (RATIO) | 722 (108)  |
| ADJ YW (RATIO) | 1225 (105) |
| WDA            | 3.33       |

DAM INFO AGE: 6 MPPA: 99 MATURE WT: 1380

| PRO | S   | HB  | GM  | CED  | BW | WW  | YW  | MLK | ME  | HP | CEM | ST   | MB   | YG  | CW   | REA  | BF |
|-----|-----|-----|-----|------|----|-----|-----|-----|-----|----|-----|------|------|-----|------|------|----|
| 117 | 60  | 57  | 15  | -3.4 | 73 | 125 | 28  | 11  | 10  | 10 | 16  | 0.56 | 0.03 | 30  | 0.24 | 0.00 |    |
| 11% | 34% | 11% | 16% | 21%  | 9% | 5%  | 22% | 90% | 66% | 4% | 39% | 18%  | 28%  | 22% | 24%  | 23%  |    |

**100% AR** ADJ IMF (RATIO) 3.46 (128) ADJ REA (RATIO) 13.89 (103)

Quarterback is creating quite the buzz in the breed. Commanding \$155,000 in Pieper's 2017 sale, his semen has been very limited the last few years. Take advantage of the performance and calving ease. The Princess Anne cow family is no stranger to making great ones. She is also the dam to Prospect C2 and Red Rock D113 who went to work for Sonstegard Red Angus.



**LOT 50**

**50 TAC QUARTERBACK J127**

REG 4565241  
DOB 3/2/21  
TATTOO J127  
CALVING EASE ★★

PIE STOCKMAN 4051  
**PIE QUARTERBACK 789**  
PIE RUBY 520

BADLANDS OPPORTUNITY 53Y  
**LAZY MS BELITA 411-0025**  
JACOBSON FRONTLINE 0025

LSF SAGA 1040Y  
PIE LAKOTA 046  
PIE ONE OF A KIND 352  
PIE RUBY 381  
HXC JACKHAMMER 8800U  
BADLANDS MEDORA 7S  
5L NORSE DESIGN 673-5035  
CBR MISS FRONTLINE 919-765

|                |            |
|----------------|------------|
| ACT BW (RATIO) | 91 (119)   |
| ADJ WW (RATIO) | 707 (106)  |
| ADJ YW (RATIO) | 1310 (112) |
| WDA            | 3.60       |

DAM INFO AGE: 8 MPPA: 103 MATURE WT: 1656

| PRO | S   | HB  | GM  | CED  | BW | WW  | YW  | MLK | ME  | HP  | CEM | ST   | MB    | YG  | CW   | REA  | BF |
|-----|-----|-----|-----|------|----|-----|-----|-----|-----|-----|-----|------|-------|-----|------|------|----|
| 103 | 49  | 54  | 13  | -0.4 | 80 | 135 | 27  | 12  | 13  | 9   | 13  | 0.59 | -0.01 | 29  | 0.38 | 0.01 |    |
| 26% | 57% | 15% | 39% | 76%  | 2% | 1%  | 35% | 93% | 19% | 11% | 74% | 14%  | 14%   | 25% | 8%   | 33%  |    |

**100% AR** ADJ IMF (RATIO) 2.17 (80) ADJ REA (RATIO) 15.59 (116)



**LOT 51**

**51 TAC SECURITY J58**

REG 4565343  
DOB 2/25/21  
TATTOO J58  
CALVING EASE ★★★★★

5L BLOCKADE 2218-30B  
**TAC SECURITY D56**  
LAZY MS BRIER 494-976

BIEBER HARD DRIVE Y120  
**3SCC VERNA B47**  
3SCC VERNA U105

5L DEFENDER 560-30Z  
5L OPAL 656-2218  
LSF RAB PERFORMANCE 2772Z  
LAZY MISS WANETTE 976-122  
LACY GOLD BAR 8123  
BIEBER LAURA 158W  
BASIN TREND SETTER 455S  
3SCC VERNA S154

|        |      |
|--------|------|
| ACT BW | 76   |
| ADJ WW | 705  |
| ADJ YW | 1110 |
| WDA    | 3.03 |

DAM INFO AGE: 8 MPPA: 99

| PRO | S   | HB | GM | CED  | BW  | WW  | YW  | MLK | ME  | HP | CEM | ST   | MB   | YG | CW   | REA  | BF |
|-----|-----|----|----|------|-----|-----|-----|-----|-----|----|-----|------|------|----|------|------|----|
| 144 | 68  | 76 | 17 | -4.6 | 62  | 99  | 25  | 3   | 11  | 10 | 17  | 0.84 | 0.08 | 43 | 0.32 | 0.02 |    |
| 1%  | 21% | 2% | 6% | 9%   | 40% | 43% | 47% | 53% | 48% | 8% | 31% | 1%   | 60%  | 3% | 13%  | 52%  |    |

**100% AR** ADJ IMF (RATIO) 2.54 (102) ADJ REA (RATIO) 14.51 (103)

If you have been reading the comments, you will come to appreciate the opportunities this bull brings to the table. He has full sisters scattered throughout the catalog that mate well with anything you throw at them. Security was sold to 5L Red Angus a few years back and boy does he make elite momma cows. The Verna cow is the best Hard Drive female around. She has an exceptional set of feet and legs with a shoulder set to base a herd around. Half sib in blood to Drifter, lot 1, and several others.



**LOT 52**

**52 TAC SECURITY J103**

REG 4565231  
DOB 2/28/21  
TATTOO J103

5L BLOCKADE 2218-30B  
**TAC SECURITY D56**  
LAZJY MS BRIER 494-976

5L DEFENDER 560-30Z  
5L OPAL 656-2218  
LSF RAB PERFORMANCE 2772Z  
LAZJY MISS WANETTE 976-122  
LJC MISSION STATEMENT P27  
GP FAITH 803  
3SCC HANNAH BIGPAY N304  
3SCC FIREFLY R008

GP WALLACE 016  
**TAC FIREFLY C227**  
3SCC FIREFLY U112

**ACT BW (RATIO)**  
69 (90)  
**ADJ WW (RATIO)**  
710 (106)  
**ADJ YW (RATIO)**  
1271 (109)  
WDA  
3.48

CALVING EASE ★★★★★  
DAM INFO AGE: 7 MPPA: 103 MATURE WT: 1352

| PRO | S  | HB  | GM | CED  | BW  | WW  | YW  | MLK | ME  | HP | CEM | ST   | MB   | YG  | CW   | REA  | BF |
|-----|----|-----|----|------|-----|-----|-----|-----|-----|----|-----|------|------|-----|------|------|----|
| 131 | 83 | 48  | 17 | -4.8 | 63  | 102 | 26  | 3   | 9   | 10 | 20  | 0.50 | 0.07 | 32  | 0.28 | 0.03 |    |
| 4%  | 5% | 25% | 8% | 7%   | 38% | 37% | 46% | 47% | 85% | 4% | 6%  | 28%  | 54%  | 17% | 18%  | 69%  |    |

**100% AR**      **ADJ IMF (RATIO)** 3.71 (137)      **ADJ REA (RATIO)** 14.26 (106)

J103 was the 11 smallest calf in his contemporary group ratioing 90. He then crushed the scale at yearling time being the 6th heaviest of 53 in his contemporary ratioing a 109. You have the best of both worlds.



**LOT 53**

**53 TAC SECURITY J92**

REG 4565361  
DOB 2/28/21  
TATTOO J92

5L BLOCKADE 2218-30B  
**TAC SECURITY D56**  
LAZJY MS BRIER 494-976

5L DEFENDER 560-30Z  
5L OPAL 656-2218  
LSF RAB PERFORMANCE 2772Z  
LAZJY MISS WANETTE 976-122  
SPUR GROUND POUNDER Y114  
2RJI SIERRA Y725  
OLC KING ROB M185  
OLC ANGELA H611

TAC FRED A25  
**TAC ANGELA C335**  
OLC ANGELA R435

**ACT BW (RATIO)**  
66 (86)  
**ADJ WW (RATIO)**  
648 (97)  
**ADJ YW (RATIO)**  
1120 (96)  
WDA  
3.06

CALVING EASE ★★★★★  
DAM INFO AGE: 7 MPPA: 102 MATURE WT: 1278

| PRO | S   | HB  | GM | CED  | BW  | WW  | YW  | MLK | ME  | HP | CEM | ST   | MB   | YG  | CW   | REA  | BF |
|-----|-----|-----|----|------|-----|-----|-----|-----|-----|----|-----|------|------|-----|------|------|----|
| 112 | 77  | 35  | 18 | -6.2 | 48  | 76  | 29  | -2  | 11  | 11 | 17  | 0.54 | 0.09 | 16  | 0.01 | 0.02 |    |
| 16% | 10% | 53% | 3% | 2%   | 86% | 85% | 16% | 26% | 50% | 2% | 22% | 21%  | 65%  | 74% | 75%  | 66%  |    |

**100% AR**      **ADJ IMF (RATIO)** 2.46 (91)      **ADJ REA (RATIO)** 12.66 (94)

Maternal granddam to Shooter. Heifer bull that will make an exceptional set of females that stick around awhile. Balance, balance, and more balance.



**TAC SECURITY D56 - SIRE OF LOTS 51-53**



**LOT 54**

**54 TAC PERFECT STORM J299**

REG 4565303  
DOB 3/18/21  
TATTOO J299  
CALVING EASE ★★★★★

5L THE REAL DEAL 1687-143B  
**5L PERFECT STORM 1201-172D**  
5L RUBY 829-1201

5L DEFENDER 560-30Z  
5L FIREFLY 275-1687  
BUF CRK THE RIGHT KIND U199  
5L RUBY 162-829  
BECKTON NEBULA M045  
BECKTON LANA M809 EP  
HXC CONQUEST 4405P  
EIR Y218

BECKTON NEBULA P P707  
**TAC VENUS D53**  
EIR A203

**ACT BW (RATIO) 69 (90)**  
**ADJ WW (RATIO) 703 (105)**  
**ADJ YW (RATIO) 1164 (100)**  
**WDA 3.17**

DAM INFO AGE: 6 MPPA: 99 MATURE WT: 1275

| PRO | S   | HB  | GM | CED  | BW  | WW  | YW  | MLK | ME  | HP  | CEM | ST   | MB   | YG  | CW   | REA  | BF |
|-----|-----|-----|----|------|-----|-----|-----|-----|-----|-----|-----|------|------|-----|------|------|----|
| 99  | 50  | 48  | 16 | -4.8 | 57  | 96  | 25  | 5   | 10  | 9   | 15  | 0.51 | 0.09 | 26  | 0.03 | 0.01 |    |
| 33% | 54% | 24% | 8% | 7%   | 60% | 50% | 47% | 66% | 58% | 17% | 52% | 26%  | 64%  | 36% | 71%  | 35%  |    |

**100% AR**  
ADJ IMF (RATIO) 3.27 (121) ADJ REA (RATIO) 11.74 (88)

Sure shot heifer bull out of a direct P707 daughter. Very solid, no holes kind and is a true cow maker.



**LOT 56**

**56 TAC GREAT BASIN J94**

REG 4565363  
DOB 2/28/21  
TATTOO J94  
CALVING EASE ★★

BECKTON LIKABLE C643 L3  
**9 MILE GREAT BASIN 7972**  
LSF RAB MS ENVY X6631

BECKTON LIKABLE U130 L2  
BECKTON MINOLA X107 L  
MCPHEE PACIFIC PRIDE 4127  
BROWN MS DESTINATION T7634  
5L THE REAL DEAL 1687-143B  
5L RUBY 829-1201  
SDCC JACKHAMMER 734Y  
SDCC MARIGOLD 501W

**ACT BW (RATIO) 93 (130)**  
**ADJ WW (RATIO) 710 (106)**  
**ADJ YW (RATIO) 1227 (105)**  
**WDA 3.16**

DAM INFO AGE: 3 MPPA: 102 MATURE WT: 1166

| PRO | S   | HB  | GM  | CED | BW  | WW  | YW  | MLK | ME  | HP  | CEM | ST   | MB   | YG  | CW   | REA  | BF |
|-----|-----|-----|-----|-----|-----|-----|-----|-----|-----|-----|-----|------|------|-----|------|------|----|
| 71  | 26  | 44  | 8   | 0.9 | 66  | 101 | 26  | -1  | 10  | 2   | 13  | 0.61 | 0.03 | 17  | 0.29 | 0.03 |    |
| 80% | 92% | 31% | 96% | 92% | 25% | 38% | 43% | 30% | 71% | 98% | 77% | 12%  | 29%  | 71% | 17%  | 83%  |    |

**100% AR**  
ADJ IMF (RATIO) 2.91 (108) ADJ REA (RATIO) 16.36 (122)

These cattle are super good on their feet. You will truly not appreciate them until you see the daughters. You are welcome to come out and see the keeper heifers. He is definitely not the growth sire in the offering, but if your end goal is the female, look no further.



**LOT 55**

**55 TAC DOUBLE BARREL J322**

REG 4565311  
DOB 3/21/21  
TATTOO J322  
CALVING EASE ★★

RED BENCHMARK TRANSITION 10-14  
**3SCC DOUBLE BARREL E146**  
NSFR MTX C71

LSF MEW GAME CHANGER 1613Y  
RED BENCHMARK LANA 60'11  
RED SOO LINE POWER EYE 161X  
NSFR MTX W17  
3SCC DOMINOR W338  
MESSMER GINNIE V536  
BASIN EXT W103  
BIEBER FLOWER 10383

3SCC DICTATE C74  
**TAC FLOWER E146**  
TAC FLOWER 24

**ACT BW (RATIO) 103 (136)**  
**ADJ WW (RATIO) 791 (118)**  
**ADJ YW (RATIO) 1296 (111)**  
**WDA 3.51**

DAM INFO AGE: 5 MPPA: 108 MATURE WT: 1530

| PRO | S   | HB  | GM  | CED | BW | WW  | YW  | MLK | ME  | HP  | CEM | ST   | MB   | YG  | CW   | REA  | BF |
|-----|-----|-----|-----|-----|----|-----|-----|-----|-----|-----|-----|------|------|-----|------|------|----|
| 80  | 40  | 40  | 6   | 3.3 | 82 | 133 | 30  | 11  | 11  | 2   | 16  | 0.34 | 0.11 | 35  | 0.27 | 0.04 |    |
| 64% | 74% | 41% | 98% | 99% | 2% | 2%  | 11% | 90% | 47% | 98% | 36% | 67%  | 76%  | 10% | 20%  | 85%  |    |

**100% AR**  
ADJ IMF (RATIO) 2.34 (87) ADJ REA (RATIO) 13.59 (101)

He is the heaviest weaning ratioing a 118 (1 of 53), the 4th heaviest yearling, all while being the youngest bull of the offering.

**57 TAC GREAT BASIN J177**

REG 4565271  
DOB 3/5/21  
TATTOO J177  
CALVING EASE ★★

BECKTON LIKABLE C643 L3  
**9 MILE GREAT BASIN 7972**  
LSF RAB MS ENVY X6631

BECKTON LIKABLE U130 L2  
BECKTON MINOLA X107 L  
MCPHEE PACIFIC PRIDE 4127  
BROWN MS DESTINATION T7634  
BFCK CHEROKEE CNYN 4912  
BASIN INDIGO H680  
BASIN HOBO 79E  
SODAK OPAL H8123

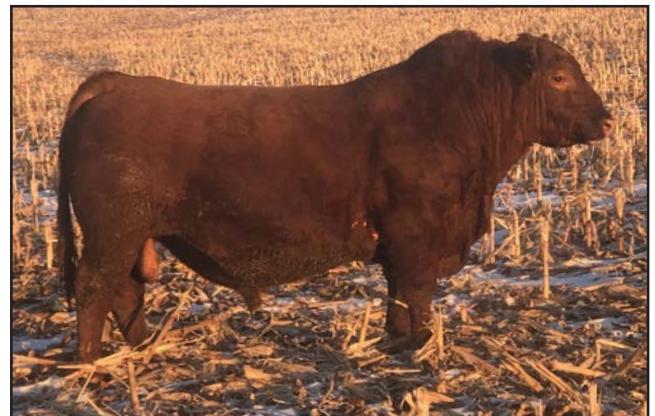
**ACT BW (RATIO) 82 (108)**  
**ADJ WW (RATIO) 657 (98)**  
**ADJ YW (RATIO) 1064 (91)**  
**WDA 2.86**

DAM INFO AGE: 15 MPPA: 106 MATURE WT: 1488

| PRO | S   | HB  | GM  | CED  | BW  | WW  | YW  | MLK | ME  | HP  | CEM | ST   | MB   | YG  | CW   | REA  | BF |
|-----|-----|-----|-----|------|-----|-----|-----|-----|-----|-----|-----|------|------|-----|------|------|----|
| 107 | 76  | 31  | 14  | -2.3 | 53  | 79  | 27  | -6  | 11  | 6   | 18  | 0.54 | 0.06 | 13  | 0.22 | 0.05 |    |
| 21% | 11% | 62% | 33% | 40%  | 74% | 81% | 28% | 15% | 46% | 70% | 13% | 21%  | 49%  | 84% | 28%  | 95%  |    |

**100% AR**  
ADJ IMF (RATIO) 2.60 (96) ADJ REA (RATIO) 13.04 (97)

7385 is a no miss cow. Turned 15 this calving season with yet again another AI calf. Have 8 daughters in production. She is one of the main reasons we went back in using Basin Hobo. They are great mothers and are as fertile as they come. Time tested and trusted.



**3SCC DOUBLE BARREL E146 - SIRE OF LOTS 16-17**



BIEBER ROLLIN DEEP Y118 - SIRE OF LOTS 58-60

191 has a truly impressive track record. 14 daughters in production at 9 years of age. Also being the mother to our herd sire A191. These Rollin Deep bulls will sire early growth and performance.

### 59 TAC ROLLIN DEEP J129 ET

|                            |  |  |                       |      |     |     |     |     |     |     |     |      |                 |            |                 |            |
|----------------------------|--|--|-----------------------|------|-----|-----|-----|-----|-----|-----|-----|------|-----------------|------------|-----------------|------------|
| REG<br>4565243             | BIEBER ROOSEVELT W384<br><b>BIEBER ROLLIN DEEP Y118</b><br>BIEBER TILLY 399W | BIEBER ROUGH RIDER 10712<br>BIEBER SHEBA 9602<br>BIEBER BOONE 8000<br>BIEBER TILLY 303S<br>LCC CHEYENNE B221L<br>TBLC FAYET410<br>CRSA 6X<br>TBLC MS COLT 204G 23P | ACT BW<br><b>92</b>   |      |     |     |     |     |     |     |     |      |                 |            |                 |            |
| DOB<br>3/2/21              |  |  | ADJ WW<br><b>756</b>  |      |     |     |     |     |     |     |     |      |                 |            |                 |            |
| TATTOO<br>J129             | TBLC CHEYENNE 605<br><b>TBLC MISS 605 CHEYENNE 191</b><br>TBLC MISS TANK 678 |  | ADJ YW<br><b>1243</b> |      |     |     |     |     |     |     |     |      |                 |            |                 |            |
| CALVING EASE<br>★★         |  |  | WDA<br><b>3.40</b>    |      |     |     |     |     |     |     |     |      |                 |            |                 |            |
| DAM INFO AGE: 12 MPPA: 107 |  |  |                       |      |     |     |     |     |     |     |     |      |                 |            |                 |            |
| PRO S                      | HB   | GM   | CED                   | BW   | WW  | YW  | MLK | ME  | HP  | CEM | ST  | MB   | YG              | CW         | REA             | BF         |
| 82                         | 58   | 24   | 11                    | -1.3 | 70  | 110 | 28  | 9   | 11  | 7   | 16  | 0.40 | 0.18            | 28         | 0.13            | 0.06       |
| 62%                        | 39%  | 78%  | 68%                   | 60%  | 15% | 21% | 20% | 85% | 42% | 39% | 36% | 51%  | 96%             | 28%        | 47%             | 99%        |
| 100% AR                    |  |  |                       |      |     |     |     |     |     |     |     |      | ADJ IMF (RATIO) | 2.70 (108) | ADJ REA (RATIO) | 13.79 (98) |

### 60 TAC ROLLIN DEEP J140 ET

|                            |  |  |                       |      |     |     |     |     |     |     |     |      |                 |           |                 |             |
|----------------------------|--|--|-----------------------|------|-----|-----|-----|-----|-----|-----|-----|------|-----------------|-----------|-----------------|-------------|
| REG<br>4565255             | BIEBER ROOSEVELT W384<br><b>BIEBER ROLLIN DEEP Y118</b><br>BIEBER TILLY 399W | BIEBER ROUGH RIDER 10712<br>BIEBER SHEBA 9602<br>BIEBER BOONE 8000<br>BIEBER TILLY 303S<br>LCC CHEYENNE B221L<br>TBLC FAYET410<br>CRSA 6X<br>TBLC MS COLT 204G 23P | ACT BW<br><b>86</b>   |      |     |     |     |     |     |     |     |      |                 |           |                 |             |
| DOB<br>3/3/21              |  |  | ADJ WW<br><b>745</b>  |      |     |     |     |     |     |     |     |      |                 |           |                 |             |
| TATTOO<br>J140             | TBLC CHEYENNE 605<br><b>TBLC MISS 605 CHEYENNE 191</b><br>TBLC MISS TANK 678 |  | ADJ YW<br><b>1234</b> |      |     |     |     |     |     |     |     |      |                 |           |                 |             |
| CALVING EASE<br>★★         |  |  | WDA<br><b>3.37</b>    |      |     |     |     |     |     |     |     |      |                 |           |                 |             |
| DAM INFO AGE: 12 MPPA: 107 |  |  |                       |      |     |     |     |     |     |     |     |      |                 |           |                 |             |
| PRO S                      | HB   | GM   | CED                   | BW   | WW  | YW  | MLK | ME  | HP  | CEM | ST  | MB   | YG              | CW        | REA             | BF          |
| 82                         | 58   | 24   | 11                    | -1.3 | 70  | 110 | 28  | 9   | 11  | 7   | 16  | 0.40 | 0.18            | 28        | 0.13            | 0.06        |
| 62%                        | 39%  | 78%  | 68%                   | 60%  | 15% | 21% | 20% | 85% | 42% | 39% | 36% | 51%  | 96%             | 28%       | 47%             | 99%         |
| 100% AR                    |  |  |                       |      |     |     |     |     |     |     |     |      | ADJ IMF (RATIO) | 1.73 (69) | ADJ REA (RATIO) | 14.60 (104) |

### 58 TAC ROLLIN DEEP J118

|  |  |   |                                     |      |     |     |     |     |     |     |     |      |                 |           |                 |             |
|--|--|---|-------------------------------------|------|-----|-----|-----|-----|-----|-----|-----|------|-----------------|-----------|-----------------|-------------|
| REG<br>4565239                             | BIEBER ROOSEVELT W384<br><b>BIEBER ROLLIN DEEP Y118</b><br>BIEBER TILLY 399W | BIEBER ROUGH RIDER 10712<br>BIEBER SHEBA 9602<br>BIEBER BOONE 8000<br>BIEBER TILLY 303S<br>RED SSS OLY 554T<br>VGW TM-DORA 0758<br>BASIN SALUTE R060<br>BASIN MISS 2910 | ACT BW (RATIO)<br><b>78 (103)</b>   |      |     |     |     |     |     |     |     |      |                 |           |                 |             |
| DOB<br>3/1/21                              |  |   | ADJ WW (RATIO)<br><b>749 (112)</b>  |      |     |     |     |     |     |     |     |      |                 |           |                 |             |
| TATTOO<br>J119                             | VGW OLY 903<br><b>BIEBER MISS 150Z</b><br>BASIN MISS 8226                    |   | ADJ YW (RATIO)<br><b>1195 (102)</b> |      |     |     |     |     |     |     |     |      |                 |           |                 |             |
| CALVING EASE<br>★★                         |  |   | WDA<br><b>3.24</b>                  |      |     |     |     |     |     |     |     |      |                 |           |                 |             |
| DAM INFO AGE: 11 MPPA: 101 MATURE WT: 1276 |  |   |                                     |      |     |     |     |     |     |     |     |      |                 |           |                 |             |
| PRO S                                      | HB   | GM  | CED                                 | BW   | WW  | YW  | MLK | ME  | HP  | CEM | ST  | MB   | YG              | CW        | REA             | BF          |
| 96   | 55   | 41  | 12                                  | -1.9 | 67  | 111 | 25  | 10  | 12  | 9   | 15  | 0.44 | 0.17            | 34        | 0.20            | 0.05        |
| 37%  | 46%  | 38%   | 54%                                 | 48%  | 25% | 19% | 47% | 89% | 25% | 19% | 52% | 41%  | 94%             | 13%       | 32%             | 97%         |
| 100% AR                                    |  |   |                                     |      |     |     |     |     |     |     |     |      | ADJ IMF (RATIO) | 1.85 (69) | ADJ REA (RATIO) | 13.77 (103) |

150Z did it again. The cross with Rollin Deep seems to work so well, it's hard to stray from. Have sold several full sibs throughout the years. 150Z has never had a female, year after year she cranks out a top end bull. Keep waiting for one to replace her, but how can we be disappointed when she brings this quality to the table each year.



**LOT 61**

**61 TAC HARD DRIVE J99 ET**

REG 4565365  
DOB 2/28/21  
TATTOO J99  
CALVING EASE ★★

LACY GOLD BAR 8123  
**BIEBER HARD DRIVE Y120**  
BIEBER LAURA 158W

TBLC CHEYENNE 605  
**TBLC MISS 605 CHEYENNE 191**  
TBLC MISS TANK 678

CCF GOLD BAR 0251  
LACY MS CHEROKEE 557P  
LJC MISSION STATEMENT P27  
BASIN LAURA 5301  
LCC CHEYENNE B221L  
TBLC FAYET410  
CRSA 6X  
TBLC MS COLT 204G 23P

ACT BW 83  
ADJ WW 736  
ADJ YW 1255  
WDA 3.43

DAM INFO AGE: 12 MPPA: 107

| PRO | S   | HB  | GM  | CED  | BW | WW  | YW  | MLK | ME  | HP  | CEM | ST   | MB   | YG | CW   | REA  | BF |
|-----|-----|-----|-----|------|----|-----|-----|-----|-----|-----|-----|------|------|----|------|------|----|
| 99  | 42  | 58  | 13  | -2.0 | 75 | 117 | 26  | 11  | 10  | 6   | 15  | 0.59 | 0.00 | 36 | 0.40 | 0.00 |    |
| 32% | 72% | 11% | 49% | 46%  | 7% | 11% | 43% | 90% | 66% | 64% | 54% | 14%  | 17%  | 9% | 7%   | 23%  |    |

100% AR      ADJ IMF (RATIO) 2.81 (113)      ADJ REA (RATIO) 16.06 (114)

Hard Drive is known for his breed leading carcass and growth most of all, but what the breed is finding out is how valuable the females are becoming in herd. Have sold several full brothers over the last few years.



**LOT 63**

**63 TAC INSIGHT J137**

REG 4565253  
DOB 3/2/21  
TATTOO J137  
CALVING EASE ★★

9 MILE FRANCHISE 6305  
**PIE INSIGHT 971**  
BIEBER TILLY 399W

RIDGE ENHANCED 1124  
**KLEIN SANDY 331A**  
RRA SANDY 891 050

SPUR FRANCHISE OF GARTON  
C-BAR ABIGRACE Y11  
BIEBER BOONE 8000  
BIEBER TILLY 303S  
RIDGE ENHANCED 9002  
RIDGE SHEILA 009-217  
5L SIGNATURE 2846-266V  
RRA SANDY 519 891

ACT BW (RATIO) 82 (107)  
ADJ WW (RATIO) 745 (111)  
ADJ YW (RATIO) 1157 (99)  
WDA 3.15

DAM INFO AGE: 9 MPPA: 100

| PRO | S   | HB  | GM  | CED  | BW  | WW  | YW  | MLK | ME  | HP  | CEM | ST   | MB   | YG  | CW   | REA  | BF |
|-----|-----|-----|-----|------|-----|-----|-----|-----|-----|-----|-----|------|------|-----|------|------|----|
| 91  | 52  | 38  | 11  | -1.4 | 71  | 111 | 28  | 1   | 13  | 7   | 13  | 0.40 | 0.07 | 36  | 0.41 | 0.04 |    |
| 46% | 50% | 45% | 71% | 58%  | 14% | 19% | 26% | 41% | 19% | 54% | 79% | 51%  | 56%  | 10% | 7%   | 89%  |    |

100% AR      ADJ IMF (RATIO) 3.08 (114)      ADJ REA (RATIO) 14.69 (109)

331A is a milking machine that holds up very well. This match up with Insight may be her best yet. Super soft made with the look and power you would expect.



**BIEBER HARD DRIVE Y120 - SIRE OF LOT 61**

**62 TAC INSIGHT J49**

REG 4565339  
DOB 2/22/21  
TATTOO J49  
CALVING EASE ★★

9 MILE FRANCHISE 6305  
**PIE INSIGHT 971**  
BIEBER TILLY 399W

5L PERFECT STORM 1201-172D  
**TAC MS BOADACIA G308-4128**  
LAZYJ MS BOADACIA 4128-7046

SPUR FRANCHISE OF GARTON  
C-BAR ABIGRACE Y11  
BIEBER BOONE 8000  
BIEBER TILLY 303S  
5L THE REAL DEAL 1687-143B  
5L RUBY 829-1201  
LSF RAB PERFORMANCE 2772Z  
JACOBSON KIMA 7046

ACT BW (RATIO) 86 (123)  
ADJ WW (RATIO) 697 (104)  
ADJ YW (RATIO) 1232 (106)  
WDA 3.15

DAM INFO AGE: 3 MPPA: 102 MATURE WT: 1136

| PRO | S   | HB  | GM  | CED  | BW  | WW  | YW  | MLK | ME  | HP  | CEM | ST   | MB   | YG  | CW   | REA  | BF |
|-----|-----|-----|-----|------|-----|-----|-----|-----|-----|-----|-----|------|------|-----|------|------|----|
| 104 | 53  | 51  | 11  | -0.7 | 65  | 107 | 26  | 6   | 12  | 8   | 14  | 0.52 | 0.01 | 32  | 0.39 | 0.02 |    |
| 26% | 48% | 20% | 72% | 71%  | 29% | 26% | 38% | 68% | 32% | 35% | 66% | 25%  | 23%  | 17% | 8%   | 48%  |    |

100% AR      ADJ IMF (RATIO) 2.32 (86)      ADJ REA (RATIO) 16.16 (120)

Tilly is also the dam to Rollin Deep. With Boadacia, Abigrace, Ruby, and Tilly in the pedigree to make females is pretty intriguing. Lots of breed leaders in this pedigree.



**LOT 64**

**64 TAC INSIGHT J162**

REG 4565261  
DOB 3/4/21  
TATTOO J162  
CALVING EASE ★★

9 MILE FRANCHISE 6305  
**PIE INSIGHT 971**  
BIEBER TILLY 399W

GP WALLACE 016  
**TAC CHEYENNE C285-148**  
TBLC MISS 605 CHEYENNE 148

SPUR FRANCHISE OF GARTON  
C-BAR ABIGRACE Y11  
BIEBER BOONE 8000  
BIEBER TILLY 303S  
LJC MISSION STATEMENT P27  
GP FAITH 803  
TBLC CHEYENNE 605  
TBLC MS 531

ACT BW (RATIO) 75 (98)  
ADJ WW (RATIO) 687 (103)  
ADJ YW (RATIO) 1187 (102)  
WDA 3.25

DAM INFO AGE: 7 MPPA: 101 MATURE WT: 1604

| PRO | S   | HB  | GM  | CED  | BW  | WW  | YW  | MLK | ME  | HP  | CEM | ST   | MB   | YG  | CW   | REA  | BF |
|-----|-----|-----|-----|------|-----|-----|-----|-----|-----|-----|-----|------|------|-----|------|------|----|
| 112 | 73  | 40  | 11  | -2.6 | 66  | 104 | 28  | 7   | 13  | 7   | 18  | 0.48 | 0.04 | 32  | 0.34 | 0.02 |    |
| 16% | 14% | 42% | 71% | 33%  | 26% | 33% | 20% | 74% | 19% | 58% | 19% | 32%  | 37%  | 17% | 12%  | 61%  |    |

100% AR      ADJ IMF (RATIO) 3.42 (127)      ADJ REA (RATIO) 14.02 (104)

I can just picture these steers in the feed lot. May be my favorite Insight this year due to knowing how the Wallace cattle fed. C285 had a daughter by Leverage that is one of my favorite first calf heifers.

**65 TAC INSIGHT J10**

REG 4565229  
DOB 2/19/21  
TATTOO J10  
CALVING EASE ★★

9 MILE FRANCHISE 6305  
**PIE INSIGHT 971**  
BIEBER TILLY 399W

TAC SECURITY D56  
**TAC MS FLOWER G190-B4**  
TAC FLOWER B4

SPUR FRANCHISE OF GARTON  
C-BAR ABIGRACE Y11  
BIEBER BOONE 8000  
BIEBER TILLY 303S  
5L BLOCKADE 2218-30B  
LAZY MS BRIER 494-976  
BECKTON EPIC R397 K  
TAC FLOWER Z4

|        |      |
|--------|------|
| ACT BW | 62   |
| ADJ WW | 653  |
| ADJ YW | 1018 |
| WDA    | 2.78 |

| DAM INFO AGE: 3 MPPA: MATURE WT: 1184 |     |     |     |      |     |     |     |     |     |     |     |      |      |     |      |      |
|---------------------------------------|-----|-----|-----|------|-----|-----|-----|-----|-----|-----|-----|------|------|-----|------|------|
| PRO S                                 | HB  | GM  | CED | BW   | WW  | YW  | MLK | ME  | HP  | CEM | ST  | MB   | YG   | CW  | REA  | BF   |
| 99                                    | 59  | 40  | 12  | -3.5 | 62  | 100 | 30  | 6   | 13  | 8   | 15  | 0.52 | 0.10 | 27  | 0.25 | 0.04 |
| 33%                                   | 37% | 42% | 61% | 20%  | 43% | 41% | 9%  | 67% | 14% | 37% | 58% | 25%  | 70%  | 32% | 23%  | 91%  |

**100% AR**      ADJ IMF 3.29      ADJ REA 13.01

His dam goes back to a Basin Ext, combining Security and Insight will make a great heifer bull. There are just so many good ones in the sale this year, it's hard to choose a favorite.



**LOT 66**

**66 TAC ENTERPRISE J246**

REG 4565285  
DOB 3/11/21  
TATTOO J246  
CALVING EASE ★★

9 MILE FRANCHISE 6305  
**9 MILE ENTERPRISE 8180**  
DYK RED BIRD 1944-5105

MESSMER PACKER S008  
**BIEBER SUPRISE 365Y**  
BIEBER SURPRISE 9827

SPUR FRANCHISE OF GARTON  
C-BAR ABIGRACE Y11  
GMRA DEUCES 2222  
5L BLACKBIRD 1322-1944  
MESSMER JOSHUA 019P  
MESSMER MILLIE 124P  
VGW VALUE 157  
BIEBER SUPRISE 7046

|                |           |
|----------------|-----------|
| ACT BW (RATIO) | 92 (121)  |
| ADJ WW (RATIO) | 641 (96)  |
| ADJ YW (RATIO) | 1108 (95) |
| WDA            | 3.01      |

| DAM INFO AGE: 12 MPPA: 102 MATURE WT: 1672 |     |     |     |     |     |     |     |     |     |     |     |      |      |     |      |      |
|--|-----|-----|-----|-----|-----|-----|-----|-----|-----|-----|-----|------|------|-----|------|------|
| PRO S                                      | HB  | GM  | CED | BW  | WW  | YW  | MLK | ME  | HP  | CEM | ST  | MB   | YG   | CW  | REA  | BF   |
| 88   | 48  | 41  | 7   | 0.8 | 61  | 106 | 26  | 12  | 12  | 5   | 17  | 0.28 | 0.05 | 28  | 0.35 | 0.03 |
| 50%  | 60% | 39% | 97% | 91% | 45% | 27% | 43% | 93% | 29% | 88% | 28% | 83%  | 42%  | 27% | 11%  | 82%  |

**100% AR**      ADJ IMF (RATIO) 2.55 (95)      ADJ REA (RATIO) 13.53 (101)

Power bull here with loads of carcass and grow. Y365 is a Packer daughter that is well known for marbling.



**LOT 67**

**67 TAC LEVERAGE J320**

REG 4568735  
DOB 3/21/21  
TATTOO J320  
CALVING EASE ★★

SPUR FRANCHISE OF GARTON  
**C-BAR LEVERAGE 8115F**  
ADHM STONY 503C

WZ FIREMAKER 6062 P ET  
**JR MISS FIREMAKER A23**  
JR MISS LIMINATOR S1

SPUR FRANCHISE 7070  
H & H IRENE LASS 0135  
LSF SAGA 1040Y  
C-BAR MS STONY A302  
M6 GRID MAKER 104 PET  
THOMASSWISSERSWEET1764ET  
SKYMONT P UNLIMITED 0115  
JR SHOWQUEEN P2

|        |      |
|--------|------|
| ACT BW | 94   |
| ADJ WW | 724  |
| ADJ YW | 1290 |
| WDA    | 3.60 |

| DAM INFO AGE: 9 MPPA: MATURE WT: 1574 |     |     |     |     |     |     |     |     |     |     |     |      |       |     |      |       |
|---------------------------------------|-----|-----|-----|-----|-----|-----|-----|-----|-----|-----|-----|------|-------|-----|------|-------|
| PRO S                                 | HB  | GM  | CED | BW  | WW  | YW  | MLK | ME  | HP  | CEM | ST  | MB   | YG    | CW  | REA  | BF    |
| 66                                    | 34  | 33  | 12  | 2.3 | 72  | 105 | 26  | -12 | 10  | 5   | 10  | 0.14 | -0.39 | 24  | 0.92 | -0.06 |
| 85%                                   | 85% | 59% | 64% | 98% | 11% | 30% | 40% | 9%  | 75% | 83% | 94% | 98%  | 1%    | 45% | 1%   | 1%    |

**50% AR 50% CH**      ADJ IMF 2.20      ADJ REA 15.09

Range fire at its finest. This Leverage may be A23's best yet. Growth and carcass.

**68 TAC AUTHORITY J265**

REG 4570745  
DOB 3/13/21  
TATTOO J265  
CALVING EASE ★★

LHD CHOTEAU B1669 P  
**LT AUTHORITY 7229 PLD**  
LT KATY 4273 PLD

SDCC JACKHAMMER 734Y  
**TAC LINDA A512**  
HATS LINDA 5R12

JDJ JUSTICE U319  
LHD MS CIGARSON T983  
LT STAGECOACH 8068 PLD  
LT KATY 8042 PLD  
HXC JACKHAMMER 8800U  
BECKTON ANGEL L845 WR  
RCC EVA'S CANYON M206  
HATS LINDA 1R6

|        |      |
|--------|------|
| ACT BW | 95   |
| ADJ WW | 782  |
| ADJ YW | 1297 |
| WDA    | 3.64 |

| DAM INFO AGE: 9 MPPA: 106 |     |     |     |     |     |     |     |     |     |     |    |      |    |     |      |       |
|---------------------------|-----|-----|-----|-----|-----|-----|-----|-----|-----|-----|----|------|----|-----|------|-------|
| PRO S                     | HB  | GM  | CED | BW  | WW  | YW  | MLK | ME  | HP  | CEM | ST | MB   | YG | CW  | REA  | BF    |
| -21                       | -48 | 27  | 6   | 1.1 | 70  | 99  | 20  | -1  | 6   | 1   |    | 0.31 |    | 13  | 0.37 | -0.06 |
| 99%                       | 99% | 72% | 99% | 93% | 16% | 43% | 89% | 30% | 99% | 99% |    | 76%  |    | 84% | 9%   | 1%    |

**50% AR 50% CH**      ADJ IMF (RATIO) ( )      ADJ REA (RATIO) ( )

This big boy is a performer. Bigger frame and added pounds for one whopping set of feeder steers.



# YEARLING Black Angus Bulls



**LOT 69**



**YON FULL FORCE C398 - SIRE OF LOT 69**



**SITZ STELLAR 726D - SIRE OF LOT 70**

**69 TAC FULL FORCE J172**

REG 20299819  
DOB 03/05/21  
TATTOO J172

Yon Future Force 277  
**Yon Full Force C398**  
Yon Sarah A100

SITZ Dash 11531  
**BVC Charlotte Jess DA 429**  
BVC Charlotte Jess IRM 217

Yon Future Focus T219  
Yon Burgess X212  
GDAR Game Day 449  
Yon Sarah N170  
Sitz Dash 10277  
Sitz Barbaramere Jet 3149  
S A V Iron Mountain 8066  
BVC Charlotte Jess S 834

**ACT BW (RATIO)**  
75 (106)  
**ADJ WW (RATIO)**  
571 (101)  
**ADJ YW (RATIO)**  
1163 (101)

CALVING EASE ★★★★★

**DAM INFO AGE: 8**

| CED | BW  | WW  | YW  | MLK | SEN | CW  | MB   | RE   | FAT   | SM | SW  | SF  | SG  | SB  | SC  |
|-----|-----|-----|-----|-----|-----|-----|------|------|-------|----|-----|-----|-----|-----|-----|
| 11  | 0.7 | 50  | 96  | 30  | 3   | 24  | 0.85 | 0.47 | 0.039 | 88 | 54  | 73  | 55  | 128 | 254 |
| 15% | 40% | 80% | 70% | 20% | 10% | 95% | 25%  | 70%  | 85%   | 3% | 70% | 80% | 30% | 65% | 35% |

**100% ANGUS**      **ADJ IMF (RATIO)** 2.79 (77)      **ADJ REA (RATIO)** 14.2 (108)

Starting the Angus division with one heck of a Full Force son. When visiting ABS in Wisconsin, I was instantly drawn to the powerhouse of a bull and just knew we needed to use him. Check out his \$M.

**70 TAC STELLAR J78**

REG 20300419  
DOB 02/27/21  
TATTOO J78

Mohnen Substantial 272  
**Sitz Stellar 726D**  
SITZ Pride 200B

Connealy In Focus 4925  
**BFJV Alexi E725**  
VAR Magic Primrose 149

Benfield Substance 8506  
Mohnen Glyn Mawr Elba 1758  
Connealy Final Product  
Sitz Pride 308Y  
Mytty In Focus  
Black Cana of Conanga 206  
WK Return  
VAR Magic Primrose 7108

**ACT BW (RATIO)**  
83 (102)  
**ADJ WW (RATIO)**  
652 (95)  
**ADJ YW (RATIO)**  
1076 (95)

CALVING EASE ★★

**DAM INFO AGE: 5 MATURE WT: 1240**

| CED | BW  | WW  | YW  | MLK | SEN | CW | MB   | RE   | FAT   | SM  | SW  | SF | SG | SB  | SC  |
|-----|-----|-----|-----|-----|-----|----|------|------|-------|-----|-----|----|----|-----|-----|
| 3   | 1.1 | 62  | 110 | 24  | -16 | 20 | 0.28 | 0.26 | 0.031 | 69  | 60  | 85 | 28 | 113 | 216 |
| 80% | 50% | 45% | 45% | 60% | 55% |    |      |      | 30%   | 55% | 50% |    |    |     |     |

**100% ANGUS**      **ADJ IMF (RATIO)** 2.50 (102)      **ADJ REA (RATIO)** 13.1 (94)

Stellar has the best set of feet I have ever witnessed on a mature Angus bull. I was impressed with the length of body while still being moderate in mature frame size. We are not only excited to bring you this son but have several incorporated into the Red Angus herd as well. He does a lot of things right.



**LOT 71**

**71 TAC PAYWEIGHT PLUS J62**

REG 20298050  
DOB 02/26/21  
TATTOO J62

Basin Payweight 1682  
**Basin Payweight Plus 6048**  
EXAR Royal Lass 2810

Mogck Sure Shot 1761  
**Schelske Ms 1761 Macey 461**  
Schelskes Ms Macey 932

Basin Payweight 006S  
21AR O Lass 7017  
Connealy Consensus 7229  
Exar Royal Lass 1067  
MOGCK Sure Shot  
Mogck Jane C32  
Vermilion Yellowstone  
Miss SA Macey 231

|                |            |
|----------------|------------|
| ACT BW (RATIO) | 66 (93)    |
| ACT WW         | 683        |
| ADJ YW (RATIO) | 1212 (108) |

CALVING EASE ★★★★★ DAM INFO AGE: 8 MATURE WT: 1320

| CED | BW   | WW  | YW  | MLK | SEN | CW | MB   | RE   | FAT   | \$M | \$W | \$F | \$G | \$B | \$C |
|-----|------|-----|-----|-----|-----|----|------|------|-------|-----|-----|-----|-----|-----|-----|
| 12  | -1.2 | 55  | 98  | 32  | -1  | 45 | 0.87 | 0.47 | 0.035 | 88  | 69  | 86  | 56  | 143 | 273 |
| 10% | 10%  | 65% | 65% | 15% | 15% |    |      |      | 80%   | 3%  | 30% | 50% |     |     |     |

100% ANGUS      ADJ IMF (RATIO) 6.37 (175)      ADJ REA (RATIO) 13.0 (99)

Payweight Plus is a true CE bull that excels in growth and making excellent females. J62 is so deep I'm surprised he still has hair on his stomach.



BASIN PAYWEIGHT PLUS 6048 - SIRE OF LOTS 71-73

**72 TAC PYWEIGHT PLUS J163**

REG 20298048  
DOB 03/04/21  
TATTOO J163

Basin Payweight 1682  
**Basin Payweight Plus 6048**  
EXAR Royal Lass 2810

Plainview Lutton E102  
**HB 701-30**  
HB466-41

Basin Payweight 006S  
21AR O Lass 7017  
Connealy Consensus 7229  
Exar Royal Lass 1067  
Exar Lutton 1831  
Plainview Pride C123  
HB 41-35  
HB 375-35

|                |           |
|----------------|-----------|
| ACT BW (RATIO) | 70 (99)   |
| ACT WW         | 595       |
| ADJ YW (RATIO) | 1030 (92) |

CALVING EASE ★★★★★ DAM INFO AGE: 10 MATURE WT: 1348

| CED | BW   | WW  | YW  | MLK | SEN | CW | MB   | RE   | FAT   | \$M | \$W | \$F | \$G | \$B | \$C |
|-----|------|-----|-----|-----|-----|----|------|------|-------|-----|-----|-----|-----|-----|-----|
| 11  | -0.4 | 55  | 95  | 32  | -6  | 27 | 0.38 | 0.34 | 0.025 | 83  | 65  | 85  | 34  | 119 | 237 |
| 15% | 20%  | 65% | 70% | 15% | 25% |    |      |      |       | 10% | 40% | 50% |     |     |     |

100% ANGUS      ADJ IMF (RATIO) 3.05 (84)      ADJ REA (RATIO) 11.6 (89)

**73 TAC PAYWEIGHT J81**

REG 20302636  
DOB 02/27/21  
TATTOO J81

Basin Payweight 1682  
**Basin Payweight Plus 6048**  
EXAR Royal Lass 2810

Barstow Rocky C2  
**OR Miss Rocky 506 813**  
O Miss F Product 483

Basin Payweight 006S  
21AR O Lass 7017  
Connealy Consensus 7229  
Exar Royal Lass 1067  
VAR Rocky 80029  
Barstow Queen X134  
Barstow Final Product Z62  
Pohlman's Barbara 483 12

|                |          |
|----------------|----------|
| ACT BW (RATIO) | 76 (100) |
| ADJ WW (RATIO) | 636 (97) |
| ACT YW         | 1160     |

CALVING EASE ★★★★★ DAM INFO AGE: 4 MATURE WT: 1322

| CED | BW  | WW  | YW  | MLK | SEN | CW | MB   | RE   | FAT   | \$M | \$W | \$F | \$G | \$B | \$C |
|-----|-----|-----|-----|-----|-----|----|------|------|-------|-----|-----|-----|-----|-----|-----|
| 9   | 0.3 | 57  | 104 | 34  | -7  | 29 | 0.41 | 0.36 | 0.032 | 86  | 69  | 83  | 35  | 118 | 239 |
| 30% | 30% | 60% | 55% | 10% | 30% |    |      |      |       | 4%  | 30% | 55% |     |     |     |

100% ANGUS      ADJ IMF (RATIO) 5.61 (128)      ADJ REA (RATIO) 14.9 (106)

# YEARLING Sim Angus Bulls



**74 TAC XPECTATION J384**

REG 4568319  
DOB 3/30/21  
TATTOO J384  
CALVING EASE ★★

HOOK'S XPECTATION 36X  
TAC XPECTATION G163  
ES A66

TAC CONQUEST A115  
TAC GROUND SOW C100-A112  
TAC GROUND SOW A112

GW PREDESTINED 701T  
HOOKS MIKA 141M  
RED SPRING CREEK COMMANDER 7  
EST3  
HXC CONQUEST 4405P  
3SCC EUCLA Y115  
5L FULL THROTTLE 2237-340W  
3SCC BRANDY Y112

ACT BW (RATIO) 86 (108)  
ADJ WW (RATIO) 713 (101)  
ADJ YW (RATIO) 1326 (105)  
WDA 3.74

DAM INFO AGE: 7 MPPA: 103 MATURE WT: 1412

| PRO | S   | HB  | GM  | CED  | BW  | WW  | YW  | MLK | ME  | HP  | CEM | ST   | MB   | YG  | CW   | REA   | BF |
|-----|-----|-----|-----|------|-----|-----|-----|-----|-----|-----|-----|------|------|-----|------|-------|----|
| -10 | -33 | 24  | 12  | -0.4 | 60  | 90  | 21  | 2   | 4   | 7   | 0   | 0.31 | 0.00 | 9   | 0.03 | -0.02 |    |
| 99% | 99% | 77% | 61% | 77%  | 47% | 64% | 87% | 46% | 99% | 44% | 99% | 76%  | 18%  | 92% | 71%  | 2%    |    |

75% AR 25% SM  
ADJ IMF (RATIO) 2.75 (111) ADJ REA (RATIO) 15.34 (114)

What a bull this is. He is so good at the ground while still being one of the most powerful. He is a favorite by many that have seen him.

**75 TAC XPECTATION J370**

REG 4021953  
DOB 3/28/21  
TATTOO J370  
CALVING EASE ★★

HOOK'S XPECTATION 36X  
TAC XPECTATION G163  
ES A66

MR HOC BROKER  
TLLC 44B  
TLLC MISTY 34Y

GW PREDESTINED 701T  
HOOKS MIKA 141M  
SPRINGCREEK LOTTO 52Y  
EST3  
SVF STEEL FORCE S701  
JM BF H25  
WAGR DRIVER 706T  
41L

ACT BW (RATIO) 76 (88)  
ADJ WW (RATIO) 710 (102)  
ADJ YW (RATIO) 1254 (98)

DAM INFO AGE: 8 MATURE WT: 1350

| CE   | BW   | WW   | YW   | MCE | MLK  | MWW  | ST   | DOC | CW   | YG    | MB   | BF     | RE   | SAPI  | STI  |
|------|------|------|------|-----|------|------|------|-----|------|-------|------|--------|------|-------|------|
| 12.3 | -0.5 | 68.6 | 98.1 | 6.4 | 23.0 | 57.1 | 17.4 | 7.4 | 17.9 | -0.39 | 0.02 | -0.080 | 0.73 | 119.2 | 67.3 |
| 50%  | 35%  | 75%  | 90%  | 60% | 50%  | 70%  | 25%  | 95% | 90%  | 10%   | 99%  | 15%    | 40%  | 75%   | 90%  |

3/4 SM 1/8 AN 1/8 MA  
ADJ IMF (RATIO) 1.93 (77) ADJ REA (RATIO) 14.31 (99)

BLACK. A nice baldy out of a Broker female that never misses. Put him on some red cows and make those sought-after red baldies.

## CALVING EASE STAR RATING

- ★★★★ Sure shot calving ease
- ★★★ All cows and most heifers
- ★★ Calve easy on cows
- ★ Recommended for cows



**76 TAC XPECTATION J241**

REG 4021946  
DOB 3/10/21  
TATTOO J241  
CALVING EASE ★★

GW PREDESTINED 701T  
HOOK'S XPECTATION 36X  
HOOKS MIKA 141M

Brown JY Redemption Y1334  
TAC MS REDEMPTION B6  
COMMERICAL RED ANGUS

G A R PREDESTINED  
GW MISS LUCKY STRIKE 363  
HOOKS SHEAR FORCE 38K  
HOOKS IRISH MAXINE 29K  
BECKTON NEBULA P P707  
JY MS JOLENE W16

ACT BW (RATIO) 97 (111)  
ADJ WW (RATIO) 742 (106)  
ADJ YW (RATIO) 1319 (103)

DAM INFO AGE: 8 MATURE WT: 1330

| CE   | BW   | WW   | YW    | MCE | MLK  | MWW  | ST   | DOC  | CW   | YG    | MB   | BF     | RE   | SAPI  | STI  |
|------|------|------|-------|-----|------|------|------|------|------|-------|------|--------|------|-------|------|
| 12.5 | -0.8 | 64.3 | 100.3 | 6.8 | 27.2 | 57.1 | 14.3 | 14.9 | 13.6 | -0.19 | 0.32 | -0.035 | 0.39 | 124.3 | 71.0 |
| 50%  | 30%  | 90%  | 85%   | 50% | 20%  | 70%  | 60%  | 20%  | 99%  | 65%   | 50%  | 65%    | 90%  | 65%   | 80%  |

3/8 SM 1/2 AR 1/8 AN  
ADJ IMF (RATIO) 3.19 (127) ADJ REA (RATIO) 14.72 (102)

RED. A really nice Xpection son with added frame and thickness. You just can't go wrong with good stock.



**77 TAC TRUSTEE J216**

REG 4021945  
DOB 3/8/21  
TATTOO J216  
CALVING EASE ★★

CDI REVIVAL 370D  
CDI TRUSTEE 387F  
CDI MISS HOMETOWN 163C

A STEP UP X27  
ROCHE LE82  
LE EVER READY Y932

TJ MAIN EVENT 503B  
CDI MS YESTERDAY 29B  
CDI HOMETOWN 246A  
CDI MS XPECTATION 64Z

ACT BW (RATIO) 83 (96)  
ADJ WW (RATIO) 761 (109)  
ADJ YW (RATIO) 1270 (99)

DAM INFO AGE: 6 MATURE WT: 1300

| CE   | BW  | WW   | YW    | MCE | MLK  | MWW  | ST   | DOC | CW   | YG    | MB   | BF     | RE   | SAPI  | STI  |
|------|-----|------|-------|-----|------|------|------|-----|------|-------|------|--------|------|-------|------|
| 11.8 | 0.1 | 77.7 | 112.3 | 4.9 | 23.0 | 79.0 | 15.1 | 9.8 | 37.5 | -0.42 | 0.23 | -0.081 | 1.05 | 128.3 | 77.4 |
| 60%  | 45% | 45%  | 60%   | 85% | 50%  | 2%   | 50%  | 80% | 30%  | 10%   | 70%  | 10%    | 4%   | 55%   | 55%  |

1/2 SM 5/16 AN 3/16 CS  
ADJ IMF (RATIO) 2.35 (94) ADJ REA (RATIO) 15.58 (108)

BLACK. Look at the carcass on this rip. High performer being #1 in weaning ratioing a 109.



RAVEN POWERBALL 53 - SIRE OF LOT 78



IR IMPERIAL D948 - SIRE OF LOT 78

These Imperial sons are the real deal. Awesome phenotype, performance, and carcass. You can close your eyes and pick. They are peas in a pod. What other red Simmental has the marbling of Imperial? I don't think there is one like him.



LOT 78



LOT 79

**78 TAC POWERBALL J258**

REG 4021949  
DOB 3/12/21  
TATTOO J258  
CALVING EASE ★★

PA POWER TOOL 9108  
**RAVEN POWERBALL 53**  
RAVEN EMMA E 4241  
TJ FINAL COPY 267Z  
**HLTS CHLOE**  
MF YESSICA

G A R PREDESTINED  
SHAMROCKS BEEBEE QUEEN 3095  
HOOVER DAM  
PCAR EMMA E 2215  
S A V FINAL ANSWER 0035  
TJ 34X  
SFI FULL POWER W4  
RHODES MINA P91

**ACT BW (RATIO) 93 (107)**  
**ADJ WW (RATIO) 749 (107)**  
**ADJ YW (RATIO) 1356 (106)**

**DAM INFO** AGE: 8 MATURE WT: 1372

| CE   | BW   | WW   | YW    | MCE | MLK  | MWW  | ST   | DOC  | CW   | YG    | MB   | BF     | RE   | SAPI  | STI  |
|------|------|------|-------|-----|------|------|------|------|------|-------|------|--------|------|-------|------|
| 14.0 | -0.1 | 77.5 | 122.5 | 8.9 | 22.9 | 60.9 | 13.8 | 14.1 | 43.9 | -0.08 | 0.51 | -0.014 | 0.59 | 139.4 | 82.2 |
| 30%  | 45%  | 45%  | 40%   | 20% | 50%  | 50%  | 65%  | 25%  | 15%  | 90%   | 20%  | 85%    | 65%  | 35%   | 35%  |

**3/8 SM 5/8 AN**      **ADJ IMF (RATIO) 2.66 (106)**      **ADJ REA (RATIO) 15.05 (105)**

**BLACK.** He is exactly the picture in our head when combining Powerball on B485. Growth, power, and CE.

**79 TAC IMPERIAL J248**

REG 4021947  
DOB 3/11/21  
TATTOO J248  
CALVING EASE ★★

IR IMPERIAL B772  
**IR IMPERIAL D948**  
IR MS DUAL FOCUS W086  
MR HOC BROKER  
**TAC MS BROKER E2**  
TAC MS 1086

WS BEEF KING W107  
IR MS LAUSANNE U022  
TNT DUAL FOCUS T249  
IR MS LUCKY CHARM T976  
SVF STEEL FORCE S701  
JM BF H25

**ACT BW (RATIO) 72 (84)**  
**ADJ WW (RATIO) 628 (90)**  
**ADJ YW (RATIO) 1200 (94)**

**DAM INFO** AGE: 5 MATURE WT: 1596

| CE   | BW   | WW   | YW   | MCE | MLK  | MWW  | ST   | DOC | CW   | YG    | MB   | BF     | RE   | SAPI  | STI  |
|------|------|------|------|-----|------|------|------|-----|------|-------|------|--------|------|-------|------|
| 14.5 | -1.9 | 58.8 | 89.8 | 6.6 | 22.8 | 55.2 | 13.4 | 9.3 | 20.7 | -0.32 | 0.53 | -0.053 | 0.74 | 141.7 | 76.2 |
| 25%  | 15%  | 95%  | 95%  | 55% | 55%  | 80%  | 70%  | 85% | 85%  | 25%   | 20%  | 35%    | 35%  | 30%   | 60%  |

**3/4 SM 1/4 AN**      **ADJ IMF (RATIO) 4.02 (160)**      **ADJ REA (RATIO) 13.73 (95)**

**BLACK.**

**80 TAC IMPERIAL J232**

REG 4022314  
DOB 3/10/21  
TATTOO J232  
CALVING EASE ★★

IR IMPERIAL B772  
**IR IMPERIAL D948**  
IR MS DUAL FOCUS W086  
W/C EXECUTIVE ORDER 8543B  
**TAC MS ORDER F48**  
TAC MS PERFECTION D131

WS BEEF KING W107  
IR MS LAUSANNE U022  
TNT DUAL FOCUS T249  
IR MS LUCKY CHARM T976  
W/C UNITED 956Y  
MISS WERNING KP 8543U

**ACT BW 73**  
**ADJ WW 628**  
**ADJ YW 1131**

**DAM INFO** AGE: 4 MATURE WT: 1216

| CE   | BW   | WW   | YW    | MCE | MLK  | MWW  | ST   | DOC  | CW   | YG    | MB   | BF     | RE   | SAPI  | STI  |
|------|------|------|-------|-----|------|------|------|------|------|-------|------|--------|------|-------|------|
| 15.4 | -2.3 | 66.1 | 102.0 | 7.6 | 20.1 | 61.5 | 15.4 | 13.8 | 18.8 | -0.37 | 0.59 | -0.063 | 0.81 | 154.4 | 82.8 |
| 20%  | 15%  | 85%  | 80%   | 35% | 75%  | 45%  | 50%  | 30%  | 90%  | 15%   | 15%  | 25%    | 25%  | 15%   | 35%  |

**5/8 SM 9/32 AN 1/16 AR 1/32 MA**      **ADJ IMF (RATIO) 2.99 (100)**      **ADJ REA (RATIO) 14.42 (100)**

**RED.**





LOT 81

83

TAC IMPERIAL J116

REG NA IR IMPERIAL B772 WS BEEF KING W107 ACT BW 75  
 IR IMPERIAL D948 IR MS LAUSANNE U022 ACT WW 638  
 IR MS DUAL FOCUS W086 IR MS LUCKY CHARM T976 ACT YW 1208  
 HPF UNO MAS 4D WLE UNO MAS X549  
 TAC MS DURHEIM G48-E83 TYLERTOWN MELTED  
 TAC DURHEIM E83 TAC SHOOTER A435  
 BIEBER DURHEIM 281Z

CALVING EASE ★★

DAM INFO AGE: 5 MATURE WT: 1208

| PRO S | HB | GM | CED | BW   | WW | YW | MILK | ME  | HP | CEM | ST | MB   | YG    | CW | REA  | FAT   |
|-------|----|----|-----|------|----|----|------|-----|----|-----|----|------|-------|----|------|-------|
| 138   | 85 | 53 | 15  | -2.0 | 61 | 90 | 20   | -13 | 13 | 8   | 16 | 0.57 | -0.40 | 13 | 0.74 | -0.07 |

1/2 SM 1/2 AR ADJ IMF 2.62 ADJ REA 13.50

RED. Sells as commercial

100

TAC REBOURNE H776

REG 4565605 5L BOURNE 117-48A 5L ADVANTAGE 3267-221Y ACT BW (RATIO) 74 (97)  
 TAC REBOURNE F105 ET RED HILL B571 JULIAN 84S WDA  
 SDCC MARI GOLD 501W BUF CRK MARI GOLD T132  
 BECKTON NEBULA M045  
 BECKTON LANA M809 EP  
 TAC VENUS D54 HXC CONQUEST 4405P  
 EIR A203 EIR Y218

CALVING EASE

DAM INFO AGE: 6 MPPA: 98 MATURE WT:

| PRO S | HB  | GM  | CED | BW   | WW  | YW  | MILK | ME  | HP  | CEM | ST  | MB   | YG   | CW  | REA   | BF   |
|-------|-----|-----|-----|------|-----|-----|------|-----|-----|-----|-----|------|------|-----|-------|------|
| 80    | 55  | 24  | 14  | -4.1 | 62  | 97  | 30   | 6   | 13  | 6   | 16  | 0.45 | 0.10 | 11  | -0.04 | 0.03 |
| 66%   | 44% | 77% | 26% | 13%  | 42% | 47% | 12%  | 70% | 13% | 66% | 41% | 39%  | 73%  | 88% | 85%   | 81%  |

100% AR ADJ IMF 3.14 ADJ REA 11.84

RED.

81

TAC IMPERIAL J154

REG 4021943 IR IMPERIAL B772 WS BEEF KING W107 ACT BW (RATIO) 89 (110)  
 IR IMPERIAL D948 IR MS LAUSANNE U022 IR MS DUAL FOCUS W086 TNT DUAL FOCUS T249  
 IR MS LUCKY CHARM T976  
 GW PREDESTINED 701T  
 HOOK'S EXPECTATION 36X HOOKS MIKA 141M PROFIT  
 TAC MS ALL PROFIT G66-E132 TAC MS ALL PROFIT E132 TAC MISS MONEY W103

CALVING EASE ★★

DAM INFO AGE: 3 MATURE WT: 1098

| CE   | BW  | WW   | YW    | MCE | MLK  | MWW  | ST   | DOC  | CW   | YG    | MB   | BF     | RE   | SAPI  | STI  |
|------|-----|------|-------|-----|------|------|------|------|------|-------|------|--------|------|-------|------|
| 12.7 | 0.6 | 70.0 | 105.0 | 6.6 | 18.9 | 53.5 | 18.5 | 13.7 | 19.9 | -0.41 | 0.59 | -0.068 | 0.91 | 153.5 | 81.4 |
| 45%  | 55% | 75%  | 75%   | 55% | 85%  | 85%  | 15%  | 30%  | 90%  | 10%   | 15%  | 25%    | 15%  | 15%   | 40%  |

3/4 SM 7/32 AN 1/32 MA ADJ IMF (RATIO) 2.99 (100) ADJ REA (RATIO) 14.42 (100)

RED.



LOT 82



82

TAC IMPERIAL J123

REG 4021941 IR IMPERIAL B772 WS BEEF KING W107 ACT BW (RATIO) 93 (115)  
 IR IMPERIAL D948 IR MS LAUSANNE U022 IR MS DUAL FOCUS W086 TNT DUAL FOCUS T249  
 IR MS LUCKY CHARM T976  
 GW PREDESTINED 701T  
 HOOK'S EXPECTATION 36X HOOKS MIKA 141M TAC A191  
 TAC MS MONEY G55-E358 TAC MS MONEY B344  
 TAC MS MONEY E358

CALVING EASE ★★

DAM INFO AGE: 3 MATURE WT: 1172

| CE   | BW   | WW   | YW    | MCE | MLK  | MWW  | ST   | DOC  | CW   | YG    | MB   | BF     | RE   | SAPI  | STI  |
|------|------|------|-------|-----|------|------|------|------|------|-------|------|--------|------|-------|------|
| 12.9 | -0.5 | 73.1 | 111.2 | 6.8 | 19.5 | 54.3 | 18.3 | 15.2 | 19.1 | -0.37 | 0.69 | -0.056 | 0.85 | 161.4 | 86.7 |
| 45%  | 35%  | 60%  | 65%   | 50% | 80%  | 85%  | 20%  | 15%  | 90%  | 15%   | 10%  | 35%    | 20%  | 10%   | 20%  |

3/4 SM 1/8 AN 1/8 AR ADJ IMF (RATIO) 3.44 (137) ADJ REA (RATIO) 15.19 (105)

RED.



# The Females

*This will be the first year we have ever offered purebred females for sale. They are straight out of the keeper pen. Have the look to be show heifers and the pedigree to be profitable cows. Wanted to give you a little sample of the type we will be offering as breds in December. Enjoy.*

## Save the date!

**A TA CATTLE**  
*Annual Bull and Female Sale*

OUR SALE DATE IS CHANGING!

*December 16, 2022*  
CHECK TACATTLE.COM FOR MORE INFO

This will be the final year we will be offering yearlings in the spring. As you look through the catalog, you will notice we are selling half-aged bulls that were held over just for this transition. We plan to have our annual bull sale December 16, 2022 with a select group of bred females. We are very excited for the future and feel this will help us better serve you.



**LOT 84**



**C-BAR LEVERAGE 8115F - SIRE OF LOT 86**

**84 TAC MS RUBY J68-D76**

REG 4567117  
DOB 2/26/21  
TATTOO J68

PIE STOCKMAN 4051  
**PIE QUARTERBACK 789**  
PIE RUBY 520

WEBR TOMAHAWK 1204  
**TAC MS RUBY D76**  
JAG RUBY 914W

LSF SAGA 1040Y  
PIE LAKOTA 046  
PIE ONE OF A KIND 352  
PIE RUBY 381  
WEBR DOC HOLLIDAY 2N  
PFFR MS NYACK 237  
BROWN COMMITMENT S7206  
LONE ROCK MS ESSEX 376

|                |          |
|----------------|----------|
| ACT BW (RATIO) | 60 (83)  |
| ADJ WW (RATIO) | 545 (95) |
| ADJ YW (RATIO) | 793 (94) |
| WDA            | 2.14     |

**DAM INFO** AGE: 6 MPPA: 102

| PRO S | HB  | GM  | CED | BW   | WW  | YW  | MLK | ME  | HP  | CEM | ST  | MB   | YG   | CW  | REA  | BF   |
|-------|-----|-----|-----|------|-----|-----|-----|-----|-----|-----|-----|------|------|-----|------|------|
| 108   | 61  | 47  | 16  | -4.9 | 56  | 93  | 35  | 1   | 8   | 10  | 16  | 0.69 | 0.04 | 13  | 0.05 | 0.02 |
| 21%   | 33% | 27% | 14% | 7%   | 63% | 57% | 1%  | 37% | 92% | 6%  | 40% | 6%   | 38%  | 85% | 67%  | 46%  |

**100% AR**

**86 TAC CHEYENNE J363-E106**

REG 4567119  
DOB 3/26/21  
TATTOO J363

SPUR FRANCHISE OF GARTON  
**C-BAR LEVERAGE 8115F**  
ADHM STONY 503C

TAC A191  
**TAC CHEYENNE E106**  
TBLC MISS 605 CHEYENNE 132

SPUR FRANCHISE 7070  
H & H IRENE LASS 0135  
LSF SAGA 1040Y  
C-BAR MS STONY A302  
LSF TAKEOVER 9943W  
TBLC MISS 605 CHEYENNE 191  
TBLC CHEYENNE 605  
TBLC MISS TANK 749

|                |           |
|----------------|-----------|
| ACT BW (RATIO) | 83 (117)  |
| ADJ WW (RATIO) | 604 (105) |
| ADJ YW (RATIO) | 891 (106) |
| WDA            | 2.42      |

**DAM INFO** AGE: 5 MPPA: 102

| PRO S | HB  | GM  | CED | BW   | WW  | YW  | MLK | ME  | HP  | CEM | ST  | MB   | YG   | CW  | REA  | BF   |
|-------|-----|-----|-----|------|-----|-----|-----|-----|-----|-----|-----|------|------|-----|------|------|
| 104   | 51  | 53  | 13  | -1.5 | 64  | 105 | 26  | 5   | 11  | 8   | 15  | 0.53 | 0.03 | 25  | 0.34 | 0.03 |
| 25%   | 53% | 16% | 38% | 56%  | 34% | 31% | 43% | 61% | 46% | 29% | 60% | 22%  | 30%  | 38% | 12%  | 71%  |

**100% AR**



**LOT 85**



**LOT 87**

**85 TAC MS MARIGOLD J330-B23**

REG 4567121  
DOB 3/22/21  
TATTOO J330

5L THE REAL DEAL 1687-143B  
**5L PERFECT STORM 1201-172D**  
5L RUBY 829-1201

SDCC JACKHAMMER 734Y  
**TAC MARIGOLD B23**  
SDCC MARIGOLD 501W

5L DEFENDER 560-30Z  
5L FIREFLY 275-1687  
BUF CRK THE RIGHT KIND U199  
5L RUBY 162-829  
HXC JACKHAMMER 8800U  
BECKTON ANGEL L845 WR  
RED HILL B571 JULIAN 84S  
BUF CRK MARIGOLD T132

|        |      |
|--------|------|
| ACT BW | 70   |
| ADJ WW | 567  |
| ADJ YW | 819  |
| WDA    | 2.25 |

**DAM INFO** AGE: 8 MPPA: 102

| PRO S | HB  | GM  | CED | BW   | WW  | YW  | MLK | ME  | HP  | CEM | ST  | MB   | YG   | CW  | REA  | BF   |
|-------|-----|-----|-----|------|-----|-----|-----|-----|-----|-----|-----|------|------|-----|------|------|
| 68    | 30  | 38  | 12  | -2.3 | 58  | 91  | 23  | 1   | 9   | 6   | 13  | 0.45 | 0.02 | 20  | 0.18 | 0.01 |
| 83%   | 89% | 46% | 52% | 39%  | 56% | 60% | 69% | 37% | 79% | 72% | 81% | 39%  | 25%  | 62% | 37%  | 36%  |

**100% AR**

**87 TAC MS GUINNESS**

REG 4024235  
DOB 3/9/21  
TATTOO J223

WS ALL ABOARD B80  
**OMF/DK GUINNESS 667**  
OMF/DK CHEERS C88

COMMERICAL RED ANGUS  
**1R2**  
COMMERICAL RED ANGUS

WS ALL-AROUND Z35  
WS LITTLE SISTER W37  
MR NLC UPGRADE U8676  
OMF/KB FINESSE Y4

|        |     |
|--------|-----|
| ACT BW | 77  |
| ADJ WW | 527 |

**DAM INFO** AGE: 11 MATURE WT: 1588

| CE  | BW  | WW   | YW    | MCE | MLK  | MWW  | ST   | DOC  | CW  | YG    | MB   | BF     | RE   | SAPI  | STI  |
|-----|-----|------|-------|-----|------|------|------|------|-----|-------|------|--------|------|-------|------|
| 9.1 | 1.1 | 70.0 | 106.3 | 3.3 | 21.0 | 72.7 | 13.3 | 13.2 | 28  | -0.23 | 0.35 | -0.045 | 0.61 | 123.0 | 73.3 |
| 90% | 65% | 75%  | 75%   | 95% | 70%  | 10%  | 70%  | 35%  | 65% | 55%   | 45%  | 50%    | 60%  | 65%   | 70%  |

**1/2 SM 1/2 AR**

TA CATTLE  
502 20 Road  
Thurston, NE 68062

Presorted  
First-Class Mail  
US Postage  
**PAID**  
LivestockDirect

# A

FRIDAY AT 1:30 PM

# TA CATTLE

*Annual Bull and Female Sale*

*April 8, 2022*

WEST POINT LIVESTOCK / WEST POINT, NE



**DVAuction**  
*Broadcasting Real-Time Auctions*