



Belles 
OF THE GRADE

SCOTT ANGUS CATTLE • 10/20/23 • ONLINE FEMALE SALE

Join us for our

OPEN HOUSE

Oct. 13, 2023 • 12 p.m. to 7 p.m.

20898 N 465 St, Belgrade, NE 68623



SIRE BUYER

Online Auction Ends Oct. 20th at 7 PM

Scanning this QR code with your smart phone brings you to the online auction:



SALES CONSULTANT: Mike Bohuslavsky, Sire Buyer,
Cell Phone 402-202-2034

NUTRITIONIST: D. Allen Stateler PH. D., Nutrition Services Associates (NSA)
Cell Phone 402-992-2605

CATTLE VIEWING: Cattle may be viewed on October 13th, 2023 at the Open House, starting at Noon and ending at dark.

TRUCKING: Delivery arrangement for females are at buyers' expense. Nathan Schuster, Six Diamond Cattle, cell phone 602-622-8497, will be available for trucking needs.

LIABILITY: All persons who attend the Open House, do so at their own risk, and Scott Angus Cattle assumes no liability, legal or otherwise, for any accidents, which may occur.

HEALTH: All cattle will be accompanied by proper health certificates for shipment and have had a complete vaccination program.

INSURANCE: It is recommended that buyers insure their purchases for safe delivery and after. Lashea Bickel, Dakota Ag Insurance, will be available. Cell Phone 605-530-0872

GENETIC DEFECTS: All lots are free of all known genetic conditions monitored by the American Angus Association and have genomically enhanced EPDs.

ULTRASOUND PREGNANCY TEST: All bred females have been ultrasound pregnancy tested by Dr. Lance Kurz. Sex of the fetus has been determined to the best of our ability, but is not guaranteed.

Watch

VIDEOS

of the Sale Offering by scanning this QR code with the camera app on your smart phone.



Allen Stateler, Ph.D.
Consulting Nutritionist
Nutrition Service Associates (NSA)
402-992-2605

Welcome to the Scott Angus Cattle Open House and the Second Annual Belles of the Grade Female Sale. I think you will agree that the Scott Angus family has put together an exciting set of Angus females for this inaugural sale. As the consulting nutritionist, I strive to develop optimal nutrition and management programs to match and express the genetic potential of the cattle while giving special attention to safeguarding soundness and reproductive longevity. At Scott Angus, the mantra is "cattle should never have a bad day" and every effort is made to uphold that ideal.

NUTRITIONAL PHILOSOPHY - The nutritional treatment of breeding stock from conception to breeding can have a profound effect on their lifetime potential. Nutritional influences on future health and productivity have been traced as far back as early embryonic development; a concept termed "fetal programming". That is why we focus not only on the nutrient requirements of the cow throughout her life cycle, but also the nutritional factors that affect gene expression of economically important traits in the developing calf. From conception to turnout, we focus on expressing the genetic potential of the cattle without compromising structural soundness and breeding performance.

FEMALE DEVELOPMENT - To properly develop breeding stock, we pay special attention to their energy, protein, trace mineral, and vitamin requirements. Females are developed primarily on grass and on a high-roughage ration when needed. Particular attention is given to optimal vitamin and trace mineral supplementation to promote proper reproductive development and ensure reproductive longevity. We think that you will agree that our nutritional philosophy has produced an exceptional set of females that are ready to go to work for you. Buy with confidence.

D. Allen Stateler, Ph.D.
Consulting Nutritionist
Nutrition Service Associates (NSA)
402.992.2605



SIRE BUYER

SIRE BUYER SERVICES
CUSTOMER CARE SERVICE
phone: (402) 267-1144
phone: (800) 664-6175
email: info@sirebuyer.com
www.sirebuyer.com

The Scott Angus Cattle program has disciplined themselves on a specific course to breed real-world cattle for real-world cattlemen who sell quality in pounds with necessity to do it as efficiently and profitable as possible. Their focus remains on performance and maternal traits with a specific emphasis on the cowherd and the basic traits of fertility, longevity, fleshing-ability and maternal productivity. This Female sale is highlighted with phenomenal offerings by proven industry pedigrees. These lots represent some of their most progressive genetics to date and includes daughters from all the leading SAC embryo donors. These females will provide a solid maternal foundation with a lifetime of earning potential. Contact us today for any questions of needs!



MARLIN & KELLY SCOTT



ABBY & A.J. ROPERS FAMILY



SAM & STEPHANIE SCOTT FAMILY



TYLER FOLAND AND ELI, ROBB ENGEL,
TOMMY WROBLEWSKI AND JOEL SCOTT
SCOTT ANGUS CATTLE CREW

Scott

ANGUS CATTLE



Welcome to our second annual Scott Angus Cattle: Belles of the Grade - Select Female Sale. We are offering a nice selection of our top end females: virgin heifers, bred heifers, bred cows, and elite embryo matings.

SALE FEATURES:

- A dynamic ET virgin heifer out of Sitz Pride 200B sired by SAV Panther 1906 (selling half interest)
- Our premier standout donor, SAC Emblynette 7201. She is a Resource daughter produced from seven generations of Emblynette pathfinder dams. (selling half interest). 7201 is featured on the cover of this book.
- A classy SAV Blackcap May 7306 SimAngus virgin heifer sired by WS Proclamation E202. Proclamation is acclaimed as WS Miss Sugar C4's 'Greatest and Most Proven' son.

Our goal is to breed our cattle for sound structure, feet, udder quality, fertility, docility, moderate calving with eye appeal -- not to substitute great performance. Marlin's "C" words he likes to quote are Content Comfortable Cattle Equal Conception.

Thank you for taking the time to look at our Online Sale. We appreciate your interest in our program and supporting our family's dream. We hope you can join us at our Open House to view the cattle for sale. It will take place at Scott Angus Cattle, Belgrade, NE on Friday, October 13th, starting at 12:00 PM. The online auction ends October 20th, 2023 at 7:00 PM.

Sincerely, Marlin Scott and family

Marlin Scott(308) 550-0202
Kelly Scott.....(308) 550-1726
Sam Scott.....(308) 550-1738
Abby Ropers..... (308) 550-0850
A.J. Ropers..... (308) 215-0172

SCOTTANGUSCATTLE.COM

SALE HOSTED BY SIRE BUYER AUCTIONS.SIREBUYER.COM

Catalog design by **Strommen Livestock Services** • Solen, ND • 701-290-3886



SAC PRIDE 3200

BD:12/28/2022 Reg #: 20693093 Tattoo: 3200
 S A V Quarterback 7933 #S A V Regard 4863
S A V Panther 1906 S A V Blackcap May 3525
 S A V Blackcap May 6644 #Coleman Charlo 0256
 #Connealy Final Product S A V Blackcap May 4136
SITZ Pride 200B Connealy Product 568
 #Sitz Pride 308Y #Ebonista of Conanga 471
 #Sitz Upward 307R
 #Sitz Pride 44P

ANGUSGS
 Powered by Nisogen GeneSeek

BW	65
BWR	100
WW	750
ADJ 205	715
WWR	100
Dam's Production	5/105

CED	BW	WW	YW	Milk	SC	Marb	REA	Fat	HP	Claw	Angle	SM	SC
5	2.1	87	147	30	1.32	-0.01	0.71	0.038	15.8	0.36	0.5	87	209
45%	53%	8%	27%	50%	32%	98%	50%	76%	14%	5%	66%		

Sitz Pride 200B - Dam of Lot 1

SELLING HALF INTEREST, NO POSSESSION. We could write a book on this future donor's dynamic qualities - broody, capacious, perfect feet, well balanced, and a gorgeous head to name a few. This sale highlight has been a pasture fan favorite since the get-go and will continue to turn heads as she grows into her potential.

Her dam, Sitz Pride 200B, one of the breed's elite foundation females, with 4 progeny that record an average birth ratio of 96 on three natural calves with an average weaning ratio of 105. This highly proven donor in the prime of her life has 33 progeny genomic tested to provide exceptional accuracy to her elite genomic-enhanced EPD profile. Elite for Weaning Weight EPD, Yearling Weight EPD, hot Carcass Weight EPD and \$Weaned calf value index along with her superior Ribeye area measure EPD, percent heifer Pregnancy EPD and \$Feedlot value index. Best known as the dam of the \$50k Sitz Stellar 726D. He's the top 1% in Foot Shape, Foot Angle, and hair shedding EPD, has become a cornerstone sales leader for ABS, whose sons have dominated Sitz Angus sales for the past several years. Sitz

Resilient 10208, \$165k Sitz Stellar 726D son, was the record-setting bull of the Fall 2019 Sitz Angus Ranch. Sitz Incentive 704H, another Sitz Stellar 726D son, sold for \$235k on the 2021 Sitz Angus "Elite Sort" Female Sale. Sitz Pride 379H, a flush sister to the \$23k Sitz Tailor Made 448H, also on the same sale as Sitz Pride 200B, is the Baldrige Command daughter of 200B, sold for \$120k.

Panther was the top selling bull in the 2022 Schaff Angus Valley Production sale, selling to Voss Angus. He was definitely a crowd favorite when it came to phenotype. He is very wide based with excellent structure and feet. His dam was the #1 yearling weight female of her calf crop and a flush sister to the world-record-selling flush of bulls that produced Rainfall, Raindance and President. Her progeny have been highlights at many of the SAV sales. Panther offers moderate birth weight with top of the breed performance. He is balanced across his EPD profile with no real holes.

Flushing rights will be giving after her first calf is born.



2

SAC MADAME PRIDE 3051 **ANGUS** GS
Powered by Nogen GenoSseek

BD: 1/14/2023 Reg #: 20693048 Tattoo: 3051

S A V Quarterback 7933 #S A V Regard 4863
S A V Panther 1906 S A V Blackcap May 3525
 S A V Blackcap May 6644 #Coleman Charlo 0256
 S A V Blackcap May 4136
 baldridge Xpand x743
 Baldridge Isabel Y69
 #Baldridge Colonel C251 #S A V Ten Speed 3022
#S A C Madame Pride 8051 S A V Madame Pride 5290
 S A V Madame Pride 6669

BW	79
BWR	108
WW	650
ADJ 205	655
WWR	100
Dam's Production	3/105

CED	BW	WW	YW	Milk	SC	Marb	REA	Fat	HP	Claw	Angle	SM	SC
0	4.5	76	135	38	0.98	0.33	0.49	0.041	14.7	0.47	0.41	72	219
67%	87%	35%	43%	8%	41%	80%	81%	87%	30%	38%	14%		

SAV Panther 1906 - Sire to Lots 1 and 2

A clean made heifer with great extension and length. She has that polished look which catches the cattleman's eye, in addition to her solid foundation and smooth stride. This doll of a heifer is paternal sister to Lot #1, SAC Pride 3200. Her Elation maternal sister was the dam of Doc Ryan sired 2022 Belles of the Grade Lot #4, SAC Madame Pride 2851, purchased by Herbster Angus.

Her proven Baldridge Colonel dam, SAC Madame Pride 8051, puts the right amount of spice into the 3051's lineage by adding the Isabel Y69 cow family, the mother who will go down in history as one of the top Angus producers ever. 8051 is averaging 70lb birthweight on five calves, and records WR 3/105.

This footnote can't forget to mention the royal lineage back to 3rd dam, 5290, who has 17 daughters working in the SAV herd, and 127 progeny averaging over \$12k in past SAV Sales, later owned by Mohnen Angus, which has went on to be very successful in their donor arsenal.



SAV Madame Pride 5290
 Maternal Great Granddam to Lot 2



S A C Madame Pride 8051
 Dam to Lot 2, with Lot 2 as calf



SAV Emblynette 6639 - Dam to Lot 3



SITZ Virtue 11710 - Sire to Lots 3, 4 and 24

3 SAC EMBLYNETTE 3633

BD:12/31/2022 Reg #: 20695154 Tattoo: 3633
 Sitz Accomplishment 720F Poss Achievement
Sitz Virtue 11710 Sitz Barabaramere Nell 166D
 Sitz Manor 3708 #SITZ Logo 12964
 #Sitz Manor 1061
 #S A V Renown 3439 Rito 707 of Ideal 3407 7075
S A V Emblynette 6639 S A V Blackcap May 4136
 S A V Emblynette 3301 #S A F 598 Bando 5175
 #S A V Emblynette 7319

ANGUSGS
 Powered by Nogen GeneSeek

BW	71
BWR	100
WW	680
ADJ 205	655
WWR	100
Dam's Production	4/111

CED	BW	WW	YW	Milk	SC	Marb	REA	Fat	HP	Claw	Angle	SM	SC
7	1.1	74	134	28	0.17	-0.12	0.87	0.014	11.7	0.65	0.48	55	183
7%	3%	44%	44%	56%	94%	97%	47%	69%	41%	99%	73%		

The volume, spring of rib, and muscle mass of this Virtue heifer is exceptional! She'll be a powerful bull maker and valuable maternal asset to your cowherd.

Her elegant broody SAV Renown dam, 6639, is in our eyes one of the best daughters out of, SAV Emblynette 3301(the model cow of the Angus breed, unmatched for broodiness and maternal function.) 6639 is becoming a bigtime producer for SAC. She has a Birth Ratio of 4/101 and Weaning Ratio of 4/111. Her stand-out, top-selling America bull calf, SAC Nebraska 2018, was Lot #1 on the March 2023 SAC Bull sale, selling to Seth Stock, Hay Springs, NE. Her maternal sisters sired by SAV Resource 1441, brought \$150k, \$40k, and \$25k in the 2016 SAV Sale.

This is a new and exciting mating sired by \$120k Sitz Virtue from the 2021 Sitz Angus Fall bull sale . The power, mass, bone and substance he offers is hard to find and SAC has one of his first calf crops to display.



4

SAC EMBLYNETTE 3301

ANGUS
GS
Powered by Wageningen GenesSeek

BD:1/1/2023 Reg #: 20695142 Tattoo: 3301

Sitz Accomplishment 720F
Sitz Virtue 11710
Sitz Manor 3708

Poss Achievement
Sitz Barbaramere Nell 166D
#SITZ Logo 12964
#Sitz Manor 1061
Rito 707 of Ideal 3407 7075
S A V Blackcap May 4136
#S A F 598 Bando 5175
#S A V Emblynette 7319

BW	76
BWR	104
WW	675
ADJ 205	652
WWR	99
Dam's Production	4/93

#S A V Renown 3439
S A C Emblynette 7302
S A V Emblynette 3301

CED	BW	WW	YW	Milk	SC	Marb	REA	Fat	HP	Claw	Angle	\$M	SC
3	2.7	87	154	33	1.12	0.11	1.08	0.028	12.1	0.46	0.34	72	238
37%	27%	15%	20%	20%	17%	93%	12%	76%	26%	50%	13%		

This Virtue sired heifer inherited her iconic granddam's tattoo for a reason – she has exciting likenesses to SAV Emblynette 3301 exemplifying femininity and stamping a gorgeous pattern from the side. She's book savvy as well with 13 EPDs in the top 25%. Expect sound structured bull progeny with impressive ribeyes, performance, and a supreme milking maternal heifer crop.

Her Renown dam, 7302, is a pageant beauty with sleek jet black coat and deep soggy stature. Her first progeny is a moderate Governor sired heifer, 9302, stands on her own for completeness and quality and has proven to put everything she can muster back into her calf. A clear example of her milking ability is 2021 Scale House bull calf, SAC Scale Blaster 2848, Lot 7 on 2023 SAC Spring Bull sale; pure power, good body length, and excellent foot score in the top 8%.

Sitz Virtue, highly recommended as a perfect fit for SAC by Joe Jones, Advertising/Marketing Assistant at Sitz Angus. Virtue has quite the set of numbers, having 4 EPD categories above 5%. Top 4% WW, Top 3% YW, Top 3% PAP, Top 4% RADG. He also is Top 10% in Milk. Another thing that excites us about Virtue is his dam is a Logo 12964 daughter. He is Top 1% in HP at 20.7, and Top 1% in \$M at 109.



SAC Emblynette 7302 - Dam to Lot 4



SAV
Emblynette
3301
Maternal
Granddam
to Lots 3
and 4; Dam
to Lot 25

FUN FACT: Out of all the Sitz sires' semen used by Sitz Angus Ranch, Logo 12964 holds the medal for highest conception rate. Sitz Virtue is out of a Sitz Logo dam.





SAV Blackcap May 7306 • Dam to Lots 5, 6 and 21



SAC Blackcap May 7316 • Maternal Regard Sister to Lot 5,6, and 21

5 SAC BLACKCAP MAY 3302 **ANGUS**GS

Powered by Neogen GenScan

BD:12/31/2022 Reg #: 20695246 Tattoo: 3302
 #Mohnen Substantial 272 #Benfield Substance 8506
Sitz Stellar 726D Mohnen Glyn Mawr Elba 1758
 SITZ Pride 200B #Connealy Final Product
 #Sitz Pride 308Y
 #A A R New Trend
 #S A V Blackcap May 7306 S V F Forever Lady 57D
 S A V Blackcap May 4136 #S A V 8180 Traveler 004
 #S A V May 2397

BW	65
BWR	100
WW	805
ADJ 205	774
WWR	100
Dam's Production	9/108

CED	BW	WW	YW	Milk	SC	Marb	REA	Fat	HP	Claw	Angle	SM	SC
-1	2.6	86	160	34	0.27	0.79	0.63	0.011	15.5	0.38	0.36	60	275
97%	90%	10%	1%	17%	87%	37%	35%	32%	22%	10%	5%		

We think we found the perfect sire to complement our 7306 donor. This Stellar heifer is the complete package with a beautiful profile and stature. Straight back, perfect foot, angular with femininity to boot. A quick study of her EPDs show she tops the charts in 12 categories (top 10% or less) and earns Certified Angus Beef Brand.

3302's dam, SAV Blackcap May 7306, earned a 108 IMF% on 12 calves. SAC has eight progeny retained in our herd. Flushing 7306 to Sitz Stellar 726D was a strategic SAC choice to capitalize on calving ease, performance and outstanding maternal pedigree.

Stellar is a thick topped deep sided bull with a breed leading \$Weaning index. Proven foot quality improver ranking at the top of the Main Sire list for combined Foot Score EPD's. His top 1% hair shedding genetics also thrive in southern environments.



Sitz Stellar 726D • Sire to Lot 5



6 SAC BLACKCAP MAY 3303 **ANGUS** GS
Powered by Hoogen GeneSeek

BD:1/23/2023 Reg #: 20704780 Tattoo: 3303
 S A V Renovation 6822 #S A V Renown 3439
S A V John Wayne 0862 S A V Madame Pride 0151
 #S A V Blackcap May 1808 #S A V Net Worth 4200
 #S A V May 2397
 #Boyd New Day 8005 #A A R New Trend
#S A V Blackcap May 7306 S V F Forever Lady 57D
 S A V Blackcap May 4136 #S A V 8180 Traveler 004
 #S A V May 2397

BW	79
BWR	100
WW	620
ADJ 205	645
WWR	100
Dam's Production	9/108

CED	BW	WW	YW	Milk	SC	Marb	REA	Fat	HP	Claw	Angle	SM	SC
-1	3.2	68	114	42	0	0.47	0.45	0.094	12.5	0.45	0.52	74	199
96%	92%	17%	37%	1%	92%	65%	49%	99%	58%	38%	91%		

A beautiful haired heifer with show cattle qualities - feminine head, good extension, and soft made. She's the product of a rich maternal heritage in the Blackcap May cow family and sired by S A V John Wayne 0862, a Renovation son by the breed icon 1808, one of the most talked about bulls from the 2021 Schaff Angus Valley Production Sale.

3303's pathfinder New Day dam, SAV Blackcap May 7306, is a natural daughter out of the highest income cow in the entire SAV herd, SAV Blackcap May 4136. 7306 is top 1% Milk at 41 and earned a wean ratio of 108 on 9 calves. Some of 7306's maternal brothers are President, Rainfall, Governor, Raindance, Reign, Resource, Renown, and Recharge.

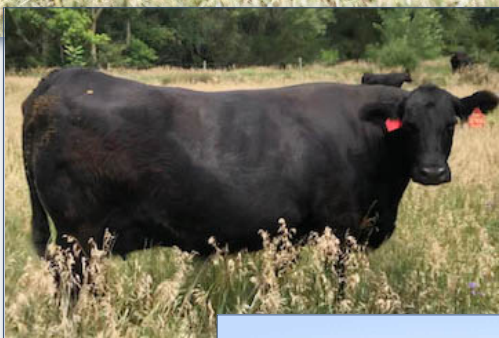
3303's powerful, maternal sister by Regard, SAC Blackcap May 7316, is a second generation SAC Donor and is top 1% WW, YW, and Milk!



SAC Blackcap May 3303 as a calf on her recipient dam



SAV John Wayne 0862 - Sire to Lot 6



SAC Elba 8406
Dam to Lot 7

Tehama Patriarch F028
Sire to Lot 7



SAV Elba 1406
Maternal Granddam to Lot 7



SAC ELBA 3402

BD:2/13/2023 Reg #: 20705363 Tattoo: 3402

#S S Niagara Z29 #Hoover Dam
 Tehama Patriarch F028 Jet S S X144
 Tehama Elite Blackbird D826 #Connealy Thunder
 #S A V Sensation 5615 Tehama Elite Blackbird Z630
S A C Elba 8406 #S A V Registry 2831
 S A V Elba 1406 S A V Blackcap May 4136
 Rito 707 of Ideal 3407 7075
 S A V Elba 1094



BW	64
BWR	100
WW	597
ADJ 205	680
WWR	100
Dam's Production	/

CED	BW	WW	YW	Milk	SC	Marb	REA	Fat	HP	Claw	Angle	\$M	SC
11	-1.3	68	124	29	0.3	0.44	0.6	0.006	16.4	0.64	0.58	56	213
20%	12%	37%	21%	37%	75%	74%	40%	37%	9%	97%	95%		

All signs point to maternal and fertility from this moderate heifer with a gorgeous feminine look. She was hand-picked for the sale out of the four flush sisters because of her highest maternal potential -- Major Calving Ease (top 10%), amazing growth, and high heifer pregnancy EPDs.

Her Sensation dam, 8406, is a new donor at Scott Angus Cattle after proving her maternal strengths raising some of our top end bulls. Our favorite son of hers, a banger sired to LD Capitalist 316, sold to Lovejoy Cattle Co, in South Dakota from the 2020 calf crop. Her first flush to Tehama Patriarch was a homerun creating seven live calves from seven embryos! Her natural calf sired to Sitz Resilient will be on the SAC Bull sale of February 2024.

Her maternal granddam, Elba 1406, a powerful, broody, and deep bodied donor cow and maternal sister to SAV Peacemaker 3179. Her \$100k dam, SAV Elba 1094, is a model Angus cow, the #1 milk EPD and ranks in the top 3 highest-income-producing cows in SAV history. SAC has retained two 1406 Sensation daughters who are two of our favorite milkin' Jessies - or should we say milkin' Elbas!



SAC BLACKCAP MAY 3671



BD:1/15/2023 Reg #: 20693808 Tattoo: 3671

Sitz Stellar 726D
Sitz Resilient 10208
 Sitz Miss Burgess 1856

#S A V Seedstock 4838
S A V Blackcap May 6674
 #S A V Blackcap May 5530

#Mohnen Substantial 272
 SITZ Pride 200B
 #Sitz Top Game 561X
 Sitz Miss Burgess 4381
 #S A V Registry 2831
 S A V Blackcap May 4136
 #B C C Bushwacker 41-93
 S A V May 7238

BW	67
BWR	100
WW	610
ADJ 205	617
WWR	100
Dam's Production	3/100

CED	BW	WW	YW	Milk	SC	Marb	REA	Fat	HP	Claw	Angle	SM	SC
7	-0.5	61	108	27	0.36	0.65	0.44	0.028	14.2	0.34	0.37	97	255
28%	16%	64%	60%	62%	75%	46%	75%	60%	32%	4%	14%		



SAV Blackcap May 6674 - Dam to Lot 8. Paternal Granddam to Lot 20

A moderate made Resilient heifer with excellent disposition and standing on a perfect foot. She'll make her personal mark in your herd through high fertility, calving ease and noteworthy \$M value in top 1%!

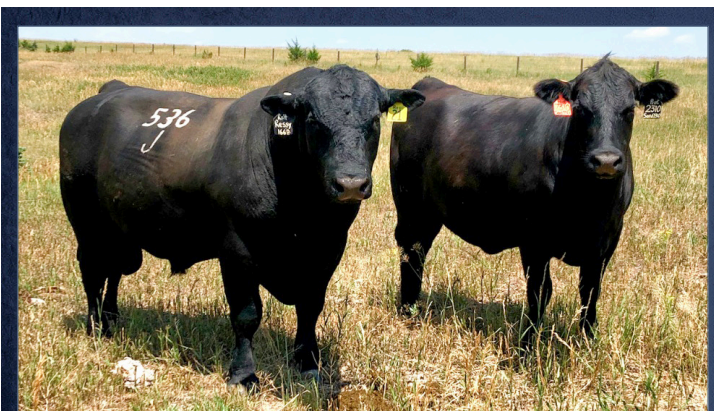
Her maternal masterpiece donor dam, SAV Blackcap 6674, is a beautiful, perfect uddered, massive SAV Seedstock. Her unique pedigree brings together three proven SAV cow families: Blackcap May 5530, Blackcap May 4136, and Madame Pride 0075. She weaned off at 800 lbs putting her in the top 4 ET heifers in the 2017 offering. 6674 weaned off a 795 lb Sitz Virtue bull calf this year - he looks to be one of the 2024 SAC spring bull sale highlights. Flush sister to donor, 6673, at Schaff Angus Valley.

Her Pathfinder grand-dam SAV Blackcap May 5530 (WR 5/108) has been one of our favorite donors at SAV creating Priority, \$156k Brand Name, \$180k Regard, and \$260K Cutting Edge. She ranks in the top three income-producing cows at \$2 Million on 113 progeny, averaging \$18k.



Sitz Resilient 10208 - Sire to Lot 8





Lot 9 Pasture Exposed to Sitz Resilient 536J

Get to Know the Herdsire: Sitz Resilient 536J, is a SAC easy-calving herdsire purchased from the Sitz Angus 2022 Spring Sale, an embryo bull calf out of the iconic dam of Sitz Accomplishment, Barbaramere Nell 166D. Look for exciting new progeny to come out of this bull.



Sitz Profound 680G - Sire to Lot 9



SAC Emblynette 7310 - Dam to Lot 9

SAC EMBLYNETTE 2310

ANGUS
Powered by Neogen GeneSeek

BD:1/15/2022 Reg #: 20422486 Tattoo: 2310
 Sitz Stellar 726D #Mohnen Substantial 272
SITZ Profound 680G SITZ Pride 200B
 #Sitz Epponia 223C Sitz Upward 9873
 Sitz Epponia 31Z
 #S A V Seedstock 4838 #S A V Registry 2831
#S A C Emblynette 7310 S A V Blackcap May 4136
 S A V Emblynette 3301 #S A F 598 Bando 5175
 #S A V Emblynette 7319

BW	71
BWR	97
WW	704
ADJ 205	720
WWR	104
Dam's Production	5/104

CED	BW	WW	YW	Milk	SC	Marb	REA	Fat	HP	Claw	Angle	SM	SC
3	1.3	69	127	27	0.81	0.33	0.75	0.025	8.5	0.46	0.36	51	203
56%	32%	54%	27%	45%	64%	60%	42%	75%	87%	38%	8%		

Major Donor Prospect Alert! The only Sitz Profound sired lot on the sale is a personal favorite of our family with her striking beauty, slick black coat, feminine calving ease head, plenty of length and depth, and angularity. Phenotypically our pick of all the 2022 born virgin heifers at SAC. Crossing an unmatched combination of SAC genetics with Sitz Angus, seeing is believing!

Her pathfinder Seedstock dam, 7310 is the most docile daughter out of donor 3301. A massive, powerful, maternal gem. She's earned her wings here as a major profit source at SAC. Maternal granddam, SAV Emblynette 3301, the maternal icon in the Angus breed has generated \$2 million in direct progeny sales. Her herdsire sons include Momentum, Hesston, First Prize, Impact, Intent, Mainstream, Inspire, Remington, and Drover.

Sitz Profound, like his sire Stellar, combines power, high growth, and large scrotal with feet in the Top 1%.

Pasture exposed to Sitz Resilient 536J, ultrasound safe with a heifer calf, due 2-22, 2024





10 SAC EMBLYNETTE 2242

ANGUS CS
Powered by Neogen GenesSeek

BD:1/8/2022 Reg #: 20416500 Tattoo: 2242
 Casino Bomber N33 #KM Broken Bow 002
T/D Doc Ryan 049 #Casino Annie K48
 T/D Ruby of Tiffany 824 G A R Phenom 7953
 B/R Ruby of Tiffany 688
 S A V Cutting Edge 4857
 S A V Ajax 8885 #S A V Emblynette 2369
S A C Emblynette 0242 #S A F 598 Bando 5175
 #S A V Emblynette 3240 #S A V Miss Emblynette 7369

BW	72
BWR	110
WW	640
ADJ 205	695
WWR	100
Dam's Production	1/100

CED	BW	WW	YW	Milk	SC	Marb	REA	Fat	HP	Claw	Angle	SM	SC
-1	4.3	80	125	22	0.25	0.95	0.46	0.034	10.5	0.48	0.44	73	284
71%	89%	11%	55%	82%	74%	16%	64%	79%	40%	41%	35%		

Body, balance, and class - A real stunner Doc Ryan daughter, is moving the needle forward with 14 EPD categories in the top 30% or less including: Top 1% Docility, WW 10%, YW 30%, Marbling 25%, and 15% \$C. The cherry on top - she's received the Certified Angus Beef brand.

Her three year-old dam, SAC Emblynette 0242, shows off her power and femininity as she's the product of stacked supreme genetics of SAV Ajax 8885 with SAF 598 Bando 5175 quested for maternal perfection. One of the best phenotypic females we raised at SAC in 2020. Owned with Black Line Angus.

Backed by her popular pathfinder grand-dam donor, SAV Emblynette 3240, in production for 18 years. She records a weaning ratio of 107 on 9 calves and an IMF ratio of 113 on 13 progeny scanned. Beautiful, big hipped, long spined, angular progeny whether sons or daughters, it's hard to find fault in what she creates. History has shown it doesn't seem to matter which sire is used, you will love them!

AI Bred to S Armstrong 1149, ultrasound safe with a bull calf, due January 17, 2024

S Armstrong was chosen for his outcross pedigree, he excels in proven maternal traits, foot quality, docility, and PAP.



TD Doc Ryan 049 - Sire to Lots 10 and 11



SAV Emblynette 3240 - Maternal Granddam to Lot 10 and 13. Dam to Lot 15



Sandpoint Emblynette 88005 - Maternal Great Granddam to Lot 11



SAC Emblynette 0801 - Dam to Lot 11

SAC EMBLYNETTE 2801

ANGUS
GS
Powered by MyAngus GeneSeek

BD:1/5/2022 Reg #: 20416498 Tattoo: 2801
 Casino Bomber N33 #KM Broken Bow 002
 T/D Doc Ryan 049 #Casino Annie K48
 T/D Ruby of Tiffany 824 G A R Phenom 7953
 #McConnell Altitude 3114 B/R Ruby of Tiffany 688
 #Connealy Comrade 1385
S A C Emblynette 0801 #MA Beauty 0156
 S A C Emblynette 8801 S A V Revolution 4846
 SandPoint Emblynette 88005

BW	62
BWR	96
WW	666
ADJ 205	714
WWR	103
Dam's Production	1/103

CED	BW	WW	YW	Milk	SC	Marb	REA	Fat	HP	Claw	Angle	SM	SC
1	2.5	88	138	18	0.22	0.77	0.74	0.018	10.6	0.56	0.4	76	281
68%	59%	12%	50%	93%	85%	37%	59%	72%	53%	81%	11%		

This fancy, clean fronted, beautifully made Doc Ryan bred heifer has caught the eye of many cattlemen who toured this summer. Her epds boast upper level performance and great carcass numbers - earning her the Certified Angus Beef brand.

Her feminine, functional designed 3-year-old dam, Emblynette 0801, is sired to McConnell Altitude 3114. Altitude has been a perfect calving ease bull that we have AI'd to the last 4 years at SAC. The calves are blocky, stout, with good growth. The daughters, including 0801, are moderate, perfect uddered, great disposition, and good leg structure. Great grand-dam, SAC's Sandpoint Emblynette 88005, is known for docility, longevity, and high fertility. She averaged 30 conventional embryos per flush.

FUN FACT: 88005 was the pick of the ET heifers from the mating Rito 1i2 by SAV Emblynette 6236 (5th Generation Pathfinder) on an ET Project we had with Sandpoint Cattle Co.. SAC AI'd our commercial herd to her flush brother, SandPoint Rito 1i2 85004,"Scotty" and made over 100 daughters who have been the base herd of our nationally known recipient program.

Pasture exposed to Sitz Resilient 536J - maternal brother to Sitz Accomplishment, ultrasound safe with Bull calf, due April 3, 2024



12 SAC ELBA 2232

BD:1/23/2022 Reg #: 20415466 Tattoo: 2232

Marcys Scale Crusher

S A V Scale House 0845

S A V Blackcap May 1416

#S A V Raindance 6848

S A C Elba 9232

S A V Elba 4236

#Sitz Upward 307R

#Marcys Erica 393

Rito 707 of Ideal 3407 7075

S A V Blackcap May 4136

#Coleman Charlo 0256

S A V Blackcap May 4136

#Boyd New Day 8005

S A V Elba 1094

ANGUS
Powered by Waggen GenesSeek

BW	72
BWR	103
WW	644
ADJ 205	710
WWR	102
Dam's Production	3/101

CED	BW	WW	YW	Milk	SC	Marb	REA	Fat	HP	Claw	Angle	SM	SC
8	2.2	77	135	26	1.8	0.22	0.57	0.016	10.9	0.46	0.49	55	255
59%	88%	3%	4%	57%	7%	88%	20%	44%	57%	34%	64%		

A deep thick bodied Scale House heifer with great docility. Her calves are sure to put pounds on the scale and protect your bottom line with excellent weaning, yearling and carcass EPDs ranking her top 2% in Feedlot Value (\$F). Three paternal brothers were sold on the SAC Bull Sale this past spring and were a sale highlight spectacle.

SAV Scale House was the high selling bull at the 2021 Schaff Angus Valley sale for \$275k. Sired by Marcys Scale Crusher out of a full sister to Renown and Resource. He has body, mass, and muscle shape with calving ease numbers and was raised right here in Belgrade, NE. We have retained three Scale House cows in our SAC herd and it is easy to notice the powerful massive bodies of these female.

Her Raindance dam is a big long 4-year-old cow who has raised 3 AI'd sticky females. Her flush sisters have made a statement too - 9233 raised a standout LD Capitalist 316 bull as a first calf heifer and SAV Elba 9893 (dam of SAV Bandit 2115) born and raised at SAC was a numerous championship winning show heifer for Courtney Schaff with Schaff Angus Valley.

Pasture exposed to Sitz Resilient 536J, ultrasound safe, due to calve 4-8-2024.



Lot 12 Dam with Lot 12 as a calf



SAV Scale House 0845
Sire to Lot 12



SAV Elba 4236
Maternal Granddam to Lot 12





SAV Emblynette 3240 - Maternal Granddam to Lot 13



SAV Renown 7948 - Grandsire to Lot 13

13 SAC EMBLYNETTE 2021

BD:1/30/2022 Reg #: 20716162 Tattoo: 2021
 #S A V Renown 3439 Rito 707 of Ideal 3407 7075
S A V Renown 7948 S A V Blackcap May 4136
 #S A V Emblynette 8172 #S A V Net Worth 4200
 #R B Active Duty 010 #S A V Emblynette 3240
S A C Emblynette 8021 #LCC New Standard
 #S A V Emblynette 3240 B A Lady 6807 305
 #S A F 598 Bando 5175
 #S A V Miss Emblynette 7369

ANGUSGS
 Powered by Neogen GenesSeek

BW	68
BWR	95
WW	638
ADJ 205	705
WWR	101
Dam's Production	2/102

CED	BW	WW	YW	Milk	SC	Marb	REA	Fat	HP	Claw	Angle	SM	SC
4	2.5	61	104	27	1.03	0.31	0.53	0.017				60	227
70%	80%	55%	65%	45%	40%	85%	70%	60%				60%	70%

Moderate soft-made heifer with premier udder quality potential is blossoming into a feminine lady. This natural calf from SAV Renown 7948, has an exciting double dose of our donor SAV Emblynette 3240.

Her Active Duty dam is one of four flush sisters retained at SAC and she is the best for her maternal nature and beautiful udder. She currently weaned off a heifer out of Sitz Robust, she's a beauty.

Backed by her popular pathfinder maternal grand-dam donor, 3240, in production for 18 years. She records a weaning raitio of 107 on 9 calves and an IMF raitio of 113 on 13 progeny scanned. Beautiful, signature big hipped, long spined, angular progeny whether sons or daughters. It's hard to find fault in what she creates. History has shown it doesn't seem to matter which sire is used, you will love them!

Pasture Exposed to Sitz Resilient 536J. Ultrasound safe with a heifer calf, due March 3, 2024





14 SAC EMBLYNETTE 7201

BD:2/26/2017 Reg #: 19070231 Tattoo: 7201

Rito 707 of Ideal 3407 7075
#S A V Resource 1441
 S A V Blackcap May 4136
 S A V Successor 1175
#S A V Emblynette 4286
 #S A V Emblynette 8214

#R R Rito 707
 Ideal 3407 of 1418 076
 #S A V 8180 Traveler 004
 #S A V May 2397
 #S A F 598 Bando 5175
 S A V Abigale 6062
 #Sitz Traveler 8180
 #S A V Emblynette Trend 2289

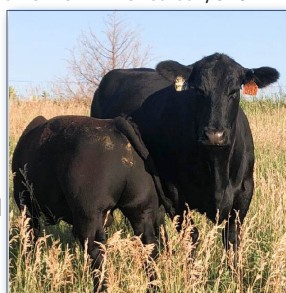


BW	74
BWR	100
WW	550
ADJ 205	607
WWR	100
Dam's Production	8/108

CED	BW	WW	YW	Milk	SC	Marb	REA	Fat	HP	Claw	Angle	SM	SC
6	2.3	57	105	29	0.39	0.13	0.65	0.007	10.8	0.42	0.41	54	182
50%	75%	50%	40%	35%	80%	95%	30%	45%	60%	20%	15%	70%	90%

SELLING HALF INTEREST, NO POSSESSION - Quality runs deep in this SAC premier donor produced from seven consecutive generations of Emblynette pathfinder dams. A few phrases to describe this Resource sired cow are perfect uddered, phenotypically flawless, and unlimited potential. SAC has loved her bull progeny - retaining her 2021 Rainfall bull as a herd sire and her 2022 America bull, SAC Nance County 2017, Lot #2 on the SAC Spring bull sale this year, sold to Brian Swerczek, Cedar Rapids, NE.

Her seventh generation pathfinder Successor dam, 4286, averaged \$21,900 on 6 progeny at SAV. Having this historic cow family backing 7201 in addition to being sired by Resource - known to be a foot improver and sire great udder and disposition females - is a fool-proof combination to a lifetime of earning power.



SAC Emblynette 7366
 Maternal Sister to Lot 14

Pasture exposed to Sitz Stellar AJS 706J, due to calve April 1, 2024.



SITZ Stellar AJS 706J - Herdsire to Bred Lot 14,19,20,

GET TO KNOW THE HERDSIRE: Sitz AJS Stellar 706J, out of Amber Sitz's cow, Sitz Emma E139B, is a SAC outcross herdsire purchased from Sitz Angus for our Registered herd, he's overshot all of our expectations of what he would do for our cattle operation.



SAV Resource 1441 - Sire to Lot 14



SAV Emblynette 4286 - Dam to Lot 14



SAV Emblynette 3240 - Dam to Lot 15



Coleman Charlo 0256 - Sire to Lot 15

15 SAC EMBLYNETTE 8241

ANGUSGS
Powered by Mygen GenSeek

BD:12/15/2017 Reg #: 19896867 Tattoo: 8241

#O C C Paxton 730P
#Coleman Charlo 0256
Bohi Abigale 6014

O C C Focus 813F
O C C Blackbird 736K
#Sitz Traveler 8180
S A V Abigale 6062
#Bon View Bando 598
S A F Royal Lass 1002
#Bon View Balance 834
B&B Miss Big Sky 2013

#S A F 598 Bando 5175
#S A V Emblynette 3240
#S A V Miss Emblynette 7369

BW	60
BWR	100
WW	604
ADJ 205	552
WWR	100
Dam's Production	9/107

CED	BW	WW	YW	Milk	SC	Marb	REA	Fat	HP	Claw	Angle	SM	SC
9	1.3	56	97	28	1	0.51	0.49	0.045	12.2	0.43	0.5	70	239
25%	50%	55%	55%	40%	35%	50%	55%	95%	40%	20%	55%	20%	35%

SELLING HALF INTEREST, NO POSSESSION • This treasured 3240 daughter sale feature holds a special place in our heart at Scott Angus Cattle. 8241 demonstrates valuable maternal qualities and a kind nature you'll fall in love with instantly. Taking after her sire with a moderate wedge shaped frame.

A maternal sister to SAC Warrior 0881, a powerful Ajax son, who is one of our top herd sires at Scott Angus Cattle. Also, a maternal sister to Lot 19, 8245 who was featured on the 2022 Belles of the Grade Female Sale, selling to Promise Land Livestock, Bassett, NE.

Her prolific pathfinder dam, SAV Emblynette 3240, (WR 9/107, YW 7/106) has proved time and time again her dominance in the Angus breed over the span of her 18 year production including Renown son Blackline Plainsman 9341 – a exceptional power bull who has been leading the semen sales for Sire Buyer.

AI bred to Ellingson Open Range, ultrasound safe with a Bull calf, due to calve January 29, 2024.





16 SAC EMBLYNETTE 8184



BD:12/26/2017 Reg #: 19902040 Tattoo: 8184

#S A V Harvester 0338
S A V Cutting Edge 4857
 #S A V Blackcap May 5530

#S A V 707 Rito 9969
S A V Emblynette 2184
 #S A V Emblynette 9981

#S A V Heritage 6295
 S A V Emblynette 7749
 #B C C Bushwacker 41-93
 S A V May 7238
 Rito 707 of Ideal 3407 7075
 BR Polly 8077-472
 #Leachman Right Time
 S A V Emblynette 1182

BW	76
BWR	100
WW	589
ADJ 205	555
WWR	100
Dam's Production	9/101

CED	BW	WW	YW	Milk	SC	Marb	REA	Fat	HP	Claw	Angle	SM	SC
6	3.3	47	91	24	1.29	0.41	0.03	0.023	14.1	0.25	0.45	66	205
39%	71%	74%	66%	59%	27%	75%	98%	71%	11%	1%	49%		



SAV Emblynette 2184 - Lot 16 Dam

This Cutting Edge sired big volume, power cow with a good sound structure, always comes through. Her five calves have a proven track record of consistency. Her 2021 Governor sired bull was an absolute standout in the bullpen with massive front, depth, and well-balanced - sold to Johnny Jeffrey of Norfolk. 8184 will provide a punch of power in your calf crop with great scrotal and heifer pregnancy EPDs.

Her elegant Rito 9969 dam, 2184, is a fourth generation SAV embryo donor with a notably great udder. The maternal pathfinder granddam by Right Time is a maternal sister to Predominant and now serves as a donor for Brooking Angus Ranch.

Pasture exposed to SAC Revolution 8846 and SAV Scale Breaker 0843, ultrasound safe with twins, due March 15, 2024

FUN FACT: 8184's sire, SAV Cutting Edge, was a standout ET bull calf raised at SAC. Also, 2184's grand dam, 1182, is a full sister to our donor, SAV Emblynette 3301.



SAV Cutting Edge 4857 - Sire to Lot 16



SAV Madame Pride 9803 - Dam to Lot 17



SAV Seedstock 4838 - Sire to Lot 17

SAC MADAME PRIDE 7805 **ANGUS**GS

Powered by Neogen GeneSeek

BD: 2/3/2017 Reg #: 19098514 Tattoo: 7805
 #S A V Registry 2831 Rito 707 of Ideal 3407 7075
#S A V Seedstock 4838 S A V Madame Pride 0075
 S A V Blackcap May 4136 #S A V 8180 Traveler 004
 #S A V May 2397
 #G A R Grid Maker
S A V Madame Pride 9803 S A V Abigale 0451
 S A V Bismarck 5682 #S A V 8180 Traveler 004
 S A V Madame Pride 5290 S A V Madame Pride 0075

BW	80
BWR	100
WW	624
ADJ 205	667
WWR	100
Dam's Production	2/99

CED	BW	WW	YW	Milk	SC	Marb	REA	Fat	HP	Claw	Angle	SM	SC
3	1.6	56	99	17	1.13	0.3	0.7	-0.004	15.3	0.45	0.44	68	230
75%	55%	55%	55%	95%	25%	80%	25%	30%	15%	25%	25%	30%	45%

This Seedstock daughter has proven the longevity of the Madame Pride cow family and become one of the favorites of the 9803 daughters raised at SAC. She sports an angular build, nice patterned profile, low maintenance udder and all stacked on a good foundation. She has given us four powerful bulls and one stylish Profound sired heifer.

Her exquisite Bismarck dam, SAV Madame Pride 9803, is a phenotypic powerhouse descending from the first Schaff cow to be enrolled in embryo transplant. She is a 7th consecutive generation SAV Madame Pride donor who averaged \$17K sales from just her first four progeny and a current profit center at Davenport Angus.

AI bred to Coneally Craftsman, ultrasound safe with a Heifer calf, due December 30, 2023.

FUN FACT: 7805 and Seedstock himself, were both raised here at Scott Angus cattle, and the SAME recip raised them both.



18 S A C BESSIE HEIRESS 9101 ANGUSGS

Powered by Mescon GenesSeek

BD: 1/14/2019 Reg #: 19781657 Tattoo: 9101

Jindra 3rd Dimension
#Jindra Acclaim
 Jindra Blackbird Lassy 1111

#Jindra Double Vision
 Jindras Sapphire J 417
 #Connealy Impression
 Jindras Enchantress J 102
 Rito 707 of Ideal 3407 7075
 S A V Madame Pride 0075
 #S A V 8180 Traveler 004
 S A V Bessie Heiress 1184

BW	72
BWR	105
WW	543
ADJ 205	588
WWR	96
Dam's Production	2/92

#S A V Registry 2831
S A C Bessie Heiress 7101
 #S A V Bessie Heiress 4149

CED	BW	WW	YW	Milk	SC	Marb	REA	Fat	HP	Claw	Angle	SM	SC
2	2.9	63	119	22	0.3	0.61	0.55	0.008	13.4	0.49	0.39	38	268
80%	85%	30%	20%	80%	85%	40%	45%	45%	25%	45%	10%	95%	15%

Here's an easy fleshing, docile, nice uddered herd cow by Jindra Acclaim. High in fertility, she's stuck AI all 4 years. This year's Downpour bull calf, weaned off at 790 lbs, and weighed 902 at booster shots. He ranks in the top 5% for phenotype of our 2023 bull calves. Also, she's the dam of Lot 7, a fancy Downpour heifer from last year's Belles of the Grade Female Sale, purchased by Blue Valley Angus, McCool Junction, NE.

4149 is a pathfinder granddam to 9101, and is a full sister, to SAV Heavy Hitter 6347.

Jindra Acclaim ranks at the top of the breed for \$Beef, while also ranking Top 10% or higher for CED, WW, YW, RADG, DOC, HP, CW, FAT and \$F.

Ultrasound safe to SAC Nebraska 2018, due February 3, 2024



Jindra Acclaim - Sire to Lot 18





SAV Blackcap May 8962 with her Charlo heifer calf
Maternal Granddam of 0819



LD Capitalist 316 - Sire to Lot 19

19 S A C BLACKCAP MAY 0819 ANGUSGS Powered by Helogen Genetics

BD:1/9/2020 Reg #: 19918432 Tattoo: 819
 #Connealy Capitalist 028 #S A V Final Answer 0035
 #LD Capitalist 316 Prides Pita of Conanga 8821
 LD Dixie Erica 2053 #C A Future Direction 5321
 LD Dixie Erica Oar 0853
 #K C F Bennett Absolute
 RB Confirmed 02-4524 R B Lady Standard 305-02
S A C Blackcap May 8019 #S A V 8180 Traveler 004
 S A V Blackcap May 8962 #S A V May 2397

BW	55
BWR	88
WW	566
ADJ 205	616
WWR	96
Dam's Production	1/96

CED	BW	WW	YW	Milk	SC	Marb	REA	Fat	HP	Claw	Angle	SM	SC
12	-1.4	56	100	31	0.08	0.39	0.26	0.093	16.9	0.45	0.53	78	225
13%	8%	67%	70%	21%	84%	82%	94%	100%	5%	25%	65%		

A unique and valuable breeding piece selling from a time-honored cow family. 0819 is a true herd cow builder with years of future ahead to prove herself. Her maternal EPDs presence includes Top 10% in 6 EPD categories including top 1% in Hair Shed, top 2% in Heifer Pregnancy, and top 5% in \$M.

Her maternal grand dam 8962, a full sister to 4136, has that timeless angus look: sleek ebony coat, feminine appeal and power combined. She is the proud dam of gorgeous Pathfinder SAV Blackcap May 0024 purchased by Ingram Angus - the #1 Indexing cow of her entire calf crop, WR 5/112

LD Capitalist 316 has been a positive breeding move for our program. He is known for his structure, soundness, and perfect feet. He stamps his calves with a look of style and quality with added muscle and performance.

Pasture Exposed to Sitz AJS Stellar 706J, and SAV Renown 7948, due to calve April 1, 2024



20 SAC BLACKCAP MAY 1434 ANGUS CS

BD:3/2/2021

Reg #: 20723513

Tattoo: 1434

Powered by Neogen Genesort

#Jindra Acclaim
S A C Scotch 9134
 S A V Blackcap May 6674

S A V President 6847
S A C Blackcap May 9434
 S A V Blackcap May 1434

Jindra 3rd Dimension
 Jindra Blackbird Lassy 1111
 #S A V Seedstock 4838
 #S A V Blackcap May 5530
 #Coleman Charlo 0256
 S A V Blackcap May 4136
 Rito 707 of Ideal 3407 7075
 S A V Blackcap May 4136

BW	62
BWR	96
WW	592
ADJ 205	764
WWR	116
Dam's Production	1/116

CED	BW	WW	YW	Milk	SC	Marb	REA	Fat	HP	Claw	Anqle	SM	SC
5	0.8	77	131	29								58	
60%	40%	15%	20%	30%								65%	



SAV Blackcap May 1434 • Maternal Granddam to Lot 20

This first calf heifer is just a peach – gentle and grace with maternal lineage back to a flush sister of Resource. She will make a young herdsman the perfect starter cow providing balance, quality and outcross options for the progressive breeder.

Her dam is one of our beloved President daughters with a new home at Crossroads Cattle Co, Kelso, TN. 1434 takes after her dam's moderate soggy frame, nice hair, and great feet. 9434 has well rounded EPDs with favorable production, maternal, management and carcass scores.

Her Acclaim son sire, SAC Scotch 9134, a 6674 son, is from our 2019 bullcrop is a breeding machine in our pastures. He has an impressive EPD production spread from -.3 BW to 120 YW and it shows in his calves. They come into the world easy Fun Sized calves and have great King Sized growth and production.

Pasture exposed to Sitz AJS Stellar 706J and SAV Renown 7948, due April 4, 2024



SAC
 Scotch
 9134
 Sire to
 Lot 20



SIMANGUS



WS Proclamation E202 - Sire to Lot 21

21 SAC BLACKCAP MAY 3305L

Black Polled

BD:2/17/2023 Reg #: 4221654 Tattoo:3305L
 CCR COWBOY CUT 5048Z TRIPLE C SINGLETARY S3H
WS PROCLAMATION E202 CCR MS 4045 TIME 7322T
 WS MISS SUGAR C4 CLRS GRADE-A 875 A
 WS ANISE A71
 BOYD NEW DAY 8005 A A R NEW TREND
S A V BLACKCAP MAY 7306 S V F FOREVER LADY 57D
 S A V BLACKCAP MAY 4136 S A V 8180 TRAVELER 004
 S A V MAY 2397

BW	
BWR	
WW	
ADJ 205	
WWR	
Dam's Production	

CED	BW	WW	YW	Milk	MWW	Doc	CW	YG	Marb	BF	REA	API	TI
13.3	0.0	90.7	141.4	24.4	69.7	15.3	52.6	-0.03	0.47	-0.010	0.59	150.8	90.6
40%	50%	10%	15%	40%	15%	15%	10%	95%	30%	95%	65%	20%	15%

Look what we have here!!! A WS Proclamation daughter -- a real stunner with majestic maternal presence, balanced phenotype from head to hip, and as Marlin says "She has feet like a mule". We will follow this future herd matron to see the exciting SimAngus progeny she will produce.

Her 16-year-old pathfinder dam, SAV Blackcap May 7306, is a direct daughter to legendary dam 4136 (generating \$10.2 million in sales). A postcard angus cow, known for her fertility, longevity, and angularity. 7306 has 4 natural bull progeny averaging \$18K on past SAV sales, including the \$25k #1 yearling weight bull at 1707 pounds in the 2015 sale. Her 2021 ET America heifer, 1606, was Lot 11 on the 2022 Belles of the Grade sale and now proudly owned by Keith Borer of Elgin, NE.

Her sire WS Proclamation E202 has taken the Simmental world by storm by consistently siring impressive performance, extra volume, foot structure, and good-natured progeny. Acclaimed as WS Miss Sugar's Greatest and Most Proven son!





Flush
SISTERS



Above: SAC Donna 2733K - Right: SAC Donna 2734K

Two golden opportunities to obtain a monumental Coleman Donna 386 lineage female. Show stopping Sim-Angus flush sisters each unique in their own way and pulling maternal strengths from the Donna cow family. 2733K is a stunning, good boned, fertile princess who is sure to turn heads with her show quality hair. 2734K is pleasant natured, nice featured, and has a very maternal look. Flush sisters to Lot #33 SAC Time Traveler 2952K sold on the SAC Bull Sale 2023, to Geidel Cattle Co, Creston, IA.

The gorgeous donor dam, Donna 73T, is out of the foundation \$200k evaluated donor cow Coleman Donna 386. 73T alongside her full sisters 8386 and 7386, will go down in history as the primordial members of the Donna tribe's infusion into the Simmental gene pool.

Sired by the famous Quantum Leap, one of the most exciting purebred Simmental bulls with eye appeal and body depth, maternal traits and an awesome cow family backing him up! He was honored with the title of Grand Champion and National Champion Simmental Bull in eight stock shows in 2014 and 2015, including the American Royal!

22 SAC DONNA 2733K Black Polled

BD: 2/11/2022 Reg #: 4157016 Tattoo: 2733K

HTP/SVF DURACELL T52 CNS DREAM ON L186
 HPF QUANTUM LEAP Z952 HTP SVF HONEYDEW
 RP/MP RIGHT TO LOVE 015U SVF/NJC BUILT RIGHT N48
 PCC QUEENS VALENTINE R9
 MEYER RANCH 734 MR BLACK GX 6W
DONNA 73T MISS GX 728R
 COLEMAN DONNA 386 BASIN RAINMAKER 654X
 KMK DONNA J311

BW	
BWR	
WW	
ADJ 205	
WWR	
Dam's Production	

23 SAC DONNA 2734K Black Scurred

BD: 2/11/2022 Reg #: 4157017 Tattoo: 2734K

HTP/SVF DURACELL T52 CNS DREAM ON L186
 HPF QUANTUM LEAP Z952 HTP SVF HONEYDEW
 RP/MP RIGHT TO LOVE 015U SVF/NJC BUILT RIGHT N48
 PCC QUEENS VALENTINE R9
 MEYER RANCH 734 MR BLACK GX 6W
DONNA 73T MISS GX 728R
 COLEMAN DONNA 386 BASIN RAINMAKER 654X
 KMK DONNA J311

BW	
BWR	
WW	
ADJ 205	
WWR	
Dam's Production	

CED	BW	WW	YW	Milk	MWW	Doc	CW	YG	Marb	BF	REA	API	TI
7.7	4.2	86	125.9	19.2	62.3	7.8	37.8	-0.45	0.09	-0.09	1.08	95	73.5
95%	99%	20%	35%	70%	40%	95%	30%	4%	90%	10%	4%	99%	70%

CED	BW	WW	YW	Milk	MWW	Doc	CW	YG	Marb	BF	REA	API	TI
8.8	1.6	70.1	99.2	19.2	54.2	5.3	23.2	-0.26	0.22	-0.055	0.57	101.4	69.0
90%	80%	75%	90%	85%	85%	99%	80%	45%	75%	35%	70%	95%	85%

2733K AI Bred to Felt Perseverance 302F, ultrasound safe with a heifer calf, due January 17, 2024

2734K is AI Bred to Felt Perseverance 302F, ultrasound safe with a bull calf, due January 17, 2024



Donna 73T
Dam to Lots 22 and 23



HPF Quantum Leap Z952
Sire to Lots 22 and 23



SAC Time Traveler 2952K
Flush Brother to Lot 22 and 23





SAC Emblynette 7201 - Donor to Embryos in Lot 24



Sitz Virtue 11710
Sire to Embryos in Lot 24



Sitz Virtue Bull Calf

Elite
EMBRYOS



SAC Emblynette 7302 - Donor to Embryos in Lot 25

24 S A C EMBLYNETTE 7201

ANGUSGS
Powered by Hergen GenesSeek

BD:2/26/2017 Reg #: 19070231 Tattoo: 7201
Rito 707 of Ideal 3407 7075
#S A V Resource 1441
S A V Blackcap May 4136
S A V Successor 1175
#S A V Emblynette 4286
#S A V Emblynette 8214

BW	74
BWR	100
WW	550
ADJ 205	607
WWR	100
Dam's Production	8/108

CED	BW	WW	YW	Milk	SC	Marb	REA	Fat	HP	Claw	Angle	SM	SC
6	2.3	57	105	29	0.39	0.13	0.65	0.007	10.8	0.42	0.41	54	182
50%	75%	50%	40%	35%	80%	95%	30%	45%	60%	65%	15%	70%	90%

Exciting embryos out of a superb SAC donor 7201 mated to the premier herd bull, Sitz Virtue 11710. We have seen first-hand what phenotypically flawless 7201 can accomplish in her powerful bull progeny - perfect height, length, depth, sound big feet and built for the ranch world!

Scott Angus Cattle has one of the first calf crops out of \$120K Sitz Virtue 11710 and we're blown away by the performance of both the eight fancy heifers and seven heavy weight bulls currently on the ground. The Virtue heifer calves have been eye-catching on the pasture tours for their volume, spring of rib, and gorgeous pattern from the side -- two are on this Belles of the Grade female sale (Lot 3 and Lot 4). The Virtue bulls are some of our heaviest weaned calves of the entire 2023 bull calf crop and show a consistent representation of growth, performance, and sought after Angus style - look for them on the SAC Bull sale in February 2024! Virtue will be a featured sire group on the Sitz Angus Fall and Spring Bull Sales.

7201's seventh generation pathfinder Successor dam, 4286, averaged \$21,900 on 6 progeny at SAV. Having this historic cow family backing 7201 in addition to being sired by Resource - known to be a foot improver and sire great udder and disposition females - is a fool-proof combination to a lifetime of earning power.

25 S A C EMBLYNETTE 7302

ANGUSGS
Powered by Hergen GenesSeek

BD:1/24/2017 Reg #: 19069335 Tattoo: 7302
Rito 707 of Ideal 3407 7075
#S A V Renown 3439
S A V Blackcap May 4136
#S A F 598 Bando 5175
#S A V Emblynette 3301
#S A V Emblynette 7319

BW	77
BWR	100
WW	648
ADJ 205	667
WWR	100
Dam's Production	5/100

CED	BW	WW	YW	Milk	SC	Marb	REA	Fat	HP	Claw	Angle	SM	SC
2	1.8	68	115	26	0.41	0.03	0.61	0.024	10.5	0.36	0.38	67	193
80%	60%	20%	25%	55%	75%	95%	35%	70%	60%	4%	5%	30%	85%

Three embryos from our attractive, Renown sired 3301 daughter, SAC Emblynette 7302, mated to the sought after Baldrige Pappy. 7302 was the #1 pick of the 15 ET daughters out of SAV Emblynette 3301, the model cow of the Angus breed, born in 2017.

7302's hardworking Governor heifer, 9302, BR 1/99, WR 1/108, would be the dam of lot 12, the gorgeous SAV Priority bred heifer.

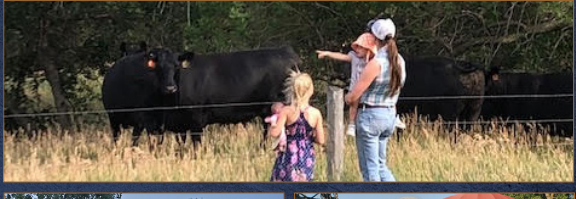
Baldrige Pappy, sold for \$110,000 on the 2018 Baldrige Bull Sale. A calving ease son of Hoover No Doubt, known for his exceptional phenotype, with a lot of substance on a good foot.



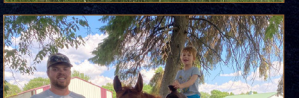
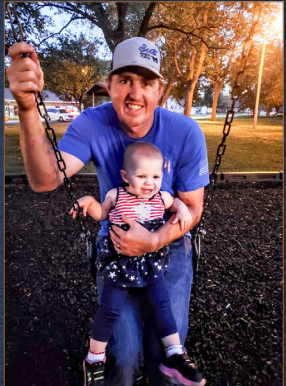
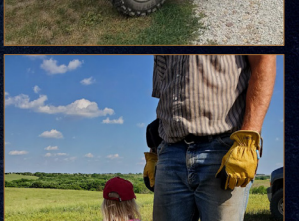
Baldrige Pappy F050 - Sire to Lot 25



SAC Emblynette 7302
Lot 25 on Pasture



WELCOME TO THE
SCOTT ANGUS CATTLE
Family





20898 N 465th Street
Belgrade, NE 68623

TIME SENSITIVE MATERIAL
PLEASE DELIVER IMMEDIATELY

First-Class Mail
US Postage
PAID
LivestockDirect



Belles

OF THE GRADE

SCOTT ANGUS CATTLE • 10/20/23 • ONLINE FEMALE SALE

OFFERING ANGUS & SIMANGUS
VIRGIN HEIFERS • BRED HEIFERS • BRED COWS • ELITE EMBRYOS

